



June 13th, 2019

City of Gainesville NW 16th Terrace Resurfacing

Guaranteed Maximum Price - Revision 1

Gainesville.
Citizen centered
People empowered





June 13th, 2019

Louis Brunetti
City of Gainesville Public Works
405 NW 39th Avenue
Gainesville, Florida 32609

**Re: City of Gainesville NW 16th Terrace Resurfacing
Guaranteed Maximum Price – Revision 1**

Mr. Brunetti:

Oelrich Construction, Inc. is pleased to present this Guaranteed Maximum Price for the construction required to complete the resurfacing and improvements of the NW 16th Terrace roadway as specified on the 60% construction documents provided by Comprehensive Engineering Services, Inc. dated June 12th, 2019.

The Guaranteed Maximum Price for this project is:

Five Hundred Five Thousand Eight Hundred Twenty-Three Dollars.....\$505,823.00

Please find the attached Team Member List (Exhibit "A"), Qualifications, Clarifications, Inclusions, and Exclusions (Exhibit "B"), Document List (Exhibit "C"), Project Schedule (Exhibit "D"), and GMP overview & GMP breakdown (Exhibit "E") used to generate this GMP.

We appreciate the opportunity to be a part of this project, and we look forward to its successful completion. Please feel free to contact me at any time if you have any questions.

Sincerely,
Oelrich Construction, Inc.

Matthew Marino
Preconstruction Manager

COG NW 16th Terrace Resurfacing Oelrich Construction Overview		
Bid Package	Package Description	Conceptual Budget Estimate
BP 1A	General Conditions	\$ 26,804
BP 3A	Concrete	\$ -
BP 26A	Electrical	\$ 2,500
BP 32B	Milling & Paving	\$ 326,844
BP 32C	Striping & Decals	\$ 56,172
BP 32D	Maintenance of Traffic	\$ 3,667
BP 32E	Landscaping	\$ 2,500
BP 34	Signage	\$ 7,700
Total of Bid Packages		\$ 426,186
Contingency		\$ 19,969
Total of Project Costs		\$ 446,155
CM Fee		\$ 40,154
Subtotal		\$ 486,309
Builders Risk Insurance		\$ 1,790
Payment and Performance Bonds		\$ 7,297
General Liability Insurance		\$ 6,027
Permit		\$ 4,400
Impact Fees		\$ -
Total Amount		\$ 505,823



EXHIBIT E - GMP DETAIL

COG NW 16th Terrace Resurfacing

Oelrich Construction, Inc.

Guaranteed Maximum Price - Revision 1

June 13, 2019

Item Description	Qty	Unit	labor			material		subcontractor		Totals	Sub Totals
			unit price	%burden	amount	unit price	amount	unit price	amount		
Project Duration		4 weeks									
General Conditions											
Project Manager	2 weeks		2,115	23.26%	5,214	-				5,214	
Superintendent General	4 weeks		1,800	26.62%	9,117	-				9,117	
Project Engineer	3 weeks		1,100	23.26%	4,068	-				4,068	
Survey & Layout	1 ea					1,500	1,500			1,500	
Safety Supplies	1 ls					200	200			200	
Temporary Water	1 months					500	500			500	
Copies and Copy Machine	1 months					156	156			156	
Cell Phone and Communications	1 months					100	100			100	
Sanitary Facilities, Toilets	1 months					95	95			95	
Office Supplies	1 ls					200	200			200	
Small Tools	1 ls					400	400			400	
Vehicle Fuel	1 ls					200	200			200	
Jobsite Vehicle	1 months					450	450			450	
Temporary Project Signs	1 ls					600	600			600	
Street Sweeper	1 months					1,000	1,000			1,000	
Continuous Cleaning	8 days					135	1,080			1,080	
Dumpsters	1 pulls					275	275			275	
Final Cleaning	1 ls					1,000	1,000			1,000	
Closeout Submittals et al	1 ls					150	150			150	
As-Builts	2 sets					250	500			500	
											26,804
BP-3 Concrete											
Curb Repair	-	Allowance					10,000	-		-	
Concrete Footings for School Signals	-	cyd					450	-		-	
											-
BP-26 Electrical											
Street Loops	2 ea						1,250	2,500		2,500	
Boring for Conduit	-	lf					15	-		-	
Pull & Splice Box	-	ea					1,000	-		-	
Electrical Power Service Overhead	-	as					2,500	-		-	
Electrical Service Wire	-	lf					5	-		-	
Electrical Power Service Transformer	-	ea					3,500	-		-	
											2,500
BP-32B Milling & Paving											
Mobilization	1 ls						84,375	84,375		84,375	
Inlet Protection	14 ea						187.5	2,625		2,625	
Mill Existing Asphalt to 2" Depth	10,624 sy						5	53,120		53,120	
New 2" Asphalt	1,068.7 tons						156.3	167,038		167,038	
Manhole Adjustment/Resetting	3 ea						1,250	3,750		3,750	
Base Repair & Mixing, 5% of Milling Area	531 sy						30	15,936		15,936	
											326,844
BP-32C Striping & Decals											
Striping MOT	1 ls						6,406	6,406		6,406	
Temporary Striping	1 ls						27,357	27,357		27,357	
Thermoplastic Standard White 12"	63 lf						4.0	252		252	
Thermoplastic Standard White 24"	106 lf						8	848		848	
Thermoplastic Standard White 2-4 Dotted	0.177 GM						6,072	1,075		1,075	
Thermoplastic Standard White Symbol	2,000 ea						350	700		700	
Thermoplastic Standard White Arrow	7 ea						125	875		875	
Thermoplastic Standard Yellow 18"	63 lf						5.5	347		347	
Thermoplastic Preformed White Symbol	12 ea						300	3,600		3,600	

EXHIBIT E - GMP DETAIL



COG NW 16th Terrace Resurfacing
 Oelrich Construction, Inc.
 Guaranteed Maximum Price - Revision 1
 June 13, 2019

Item Description	Qty	Unit	labor		material		subcontractor		Totals	Sub Totals
			unit price	%burden	amount	unit price	amount	unit price		
Thermoplastic Preformed White Arrow	12	ea					1.00	12	12	
Thermoplastic Standard White 6"	1.391	GM					6,072.00	8,446	8,446	
Thermoplastic Standard Yellow 6"	1.030	GM					6,072.00	6,254	6,254	
										56,172
BP-32D Maintenance of Traffic										
Mobilization (Post Mount/Ground Mount Signs)	31	ea					25	775	775	
Channelizing Devices - Types I, II, DI, VP, & Drum	1,560	ed					0.14	218	218	
Channelizing Devices - Types III	120	ed					0.30	36	36	
Arrow Warning Board	60	ed					6	360	360	
Portable Changeable Message Sign	120	ed					10	1,200	1,200	
Work Zone Sign	990	ed					0.28	277	277	
Traffic Control Officer	32	hours					25	800	800	
										3,667
BP-32E Landscaping										
Landscape Repair/Replacement	1	Allowance					2,500	2,500	2,500	
Tree Trimming/City Arborist	-	ls					2,500	-	-	
										2,500
BP-34 Signage										
Single Post Sign - Up to 12sf	12	ea					375	4,500	4,500	
Single Post Sign Ground Mount - Up to 12sf	2	ea					475	950	950	
Remove Single Post Sign	11	ea					100	1,100	1,100	
Sign Panel Ground Mount - Up to 12sf	2	ea					525	1,050	1,050	
Remove Sign Panel	1	ea					100	100	100	
Electric Flashing School Zone Signals	-	ea					5,000	-	-	
										7,700
Subtotal									426,186	426,186
Contingency	5%									19,969
Total Construction Costs										446,155
CM Fee	9%									40,154
Subtotal										486,309
Builders Risk Insurance										1,790
Payment and Performance Bond										7,297
General Liability Insurance	0.98%									6,027
Permit										4,400
Impact Fees										-
Total										505,823

EXHIBIT A - PROJECT TEAM



<u>Position</u>	<u>Name</u>
Project Manager	John Hunnicutt
Site Superintendent	Brad Patterson
Assistant Project Manager	Javell Woods
Assistant Superintendent	Justin Dean

June 13, 2019

City of Gainesville NW 16th Terrace Guaranteed Maximum Price – Revision 1

Qualifications, Clarifications, Inclusions & Exclusions

General

- The estimate is based on the Preliminary (60%) drawings produced by Comprehensive Engineering Services, Inc. dated 6/12/2019, project meetings, site visits, and the clarifications below.
- The estimated project construction duration will be eight (8) weeks.
- Work will be accomplished during normal work hours. This will include various activities which will cause loud noises.
- A Builder's Risk Insurance and a General Liability Insurance policy has been included.
- A Payment and Performance Bond has been included in this proposal.
- We have included costs for City of Gainesville permit in this proposal.
- We have not included costs for impact fees.
- Provisions for temporary water are included in this proposal.
- All required temporary enclosures, storage facilities, dumpsters, toilets, signage etc. have been included as a part of the project.
- A Construction Contingency of 5% is included to cover development of design, estimating variances, and unexpected events in the construction process and schedule. There is potential for road base and concrete repair beyond the capacity of this contingency, which is not covered in this GMP. The estimate does not include separate owner or design contingency.

Division 02 – Existing Conditions

- Hazardous materials removal or mitigation is not included in our price or schedule.
- Relocation or repair of existing utilities not specifically presented on the project drawings is excluded. We are not responsible for the existing utilities.

Division 03 – Concrete

- We have not included any costs for concrete curb, sidewalk or driveway repair/replacement.

Division 26 – Electrical

- We have included new traffic signal loops at NW 16th Avenue and NW 16th Terrace.
- We have not included furnish and install of two AC powered school signs.

Division 32 – Exterior Improvements

- All maintenance of traffic is included.
- Includes milling 2" of existing asphalt.
- Per the boring test, the existing asphalt thickness ranges from 3/4" to 2". Milling 2" will expose 100% of the paved area, therefore we have included rolling all of the existing lime rock base.
- We have included an allowance of 5% of the milling area to require repair of the lime rock based on conversations had at the 6/11/2019 60% design review meeting. There is potential for road base repair beyond this allowance which is not covered in this GMP.
- Includes prime coat.
- Includes 2" of asphalt which will be installed in two 1" lifts.
- We have included allowances for repair/replacement of sod and small shrubs, and restoration of staging area. All other landscaping is not included.
- We have not included allowances for tree trimming where tree canopies may interfere with construction activities. This will need to be performed by COGPW in order to have 18' clearance above the travel lanes for the milling & paving operations.
- Site furnishings are not included.

Division 34 – Transportation

- Includes temporary and permanent striping and signage per drawings.
- Includes all signage as marked per drawings. Static school zone signs have been included in lieu of electric powered flashing school zone signage.

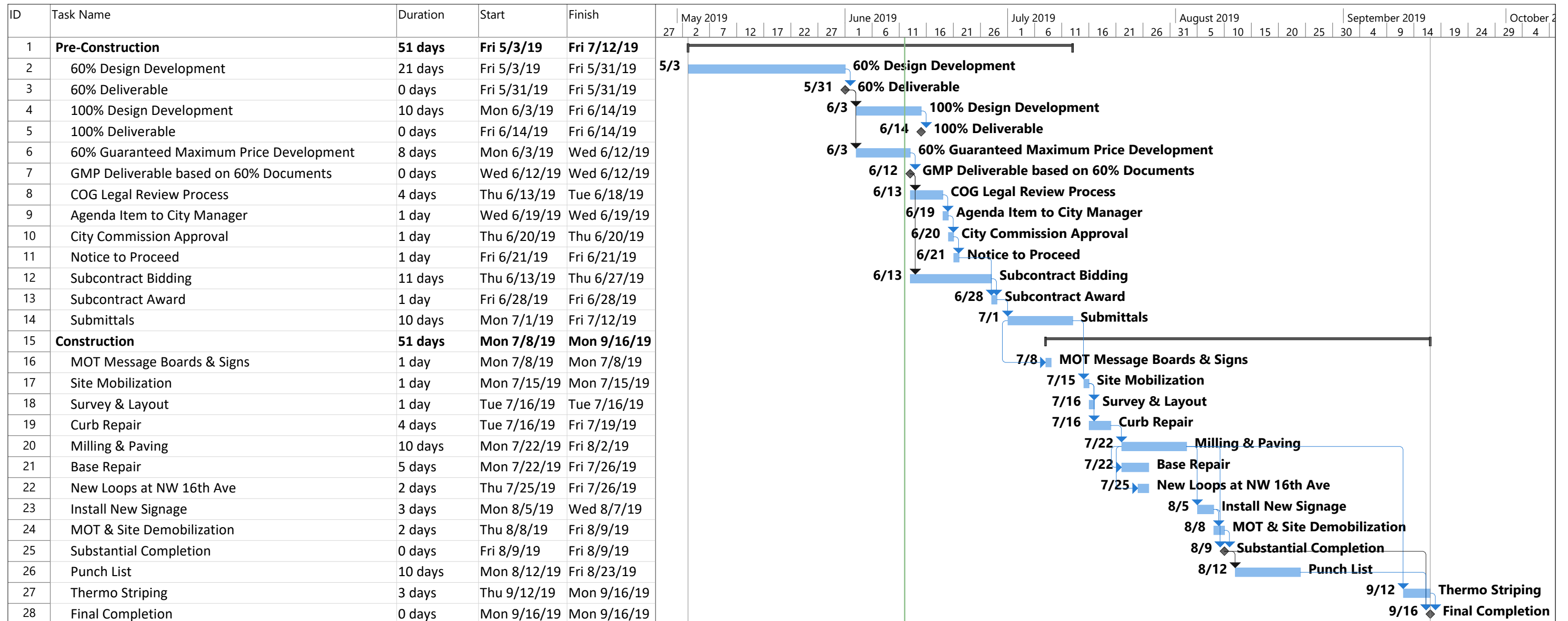
EXHIBIT C – DOCUMENT LOG



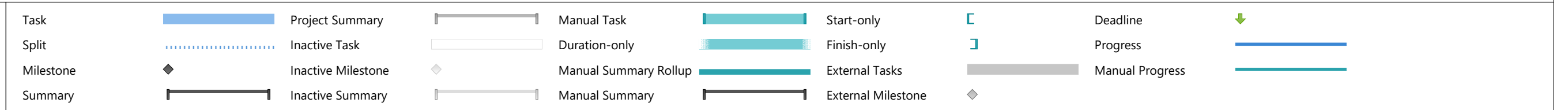
PRELIMINARY 60% DRAWINGS

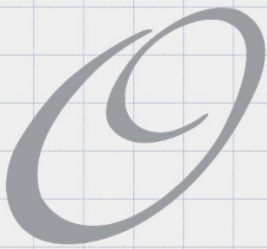
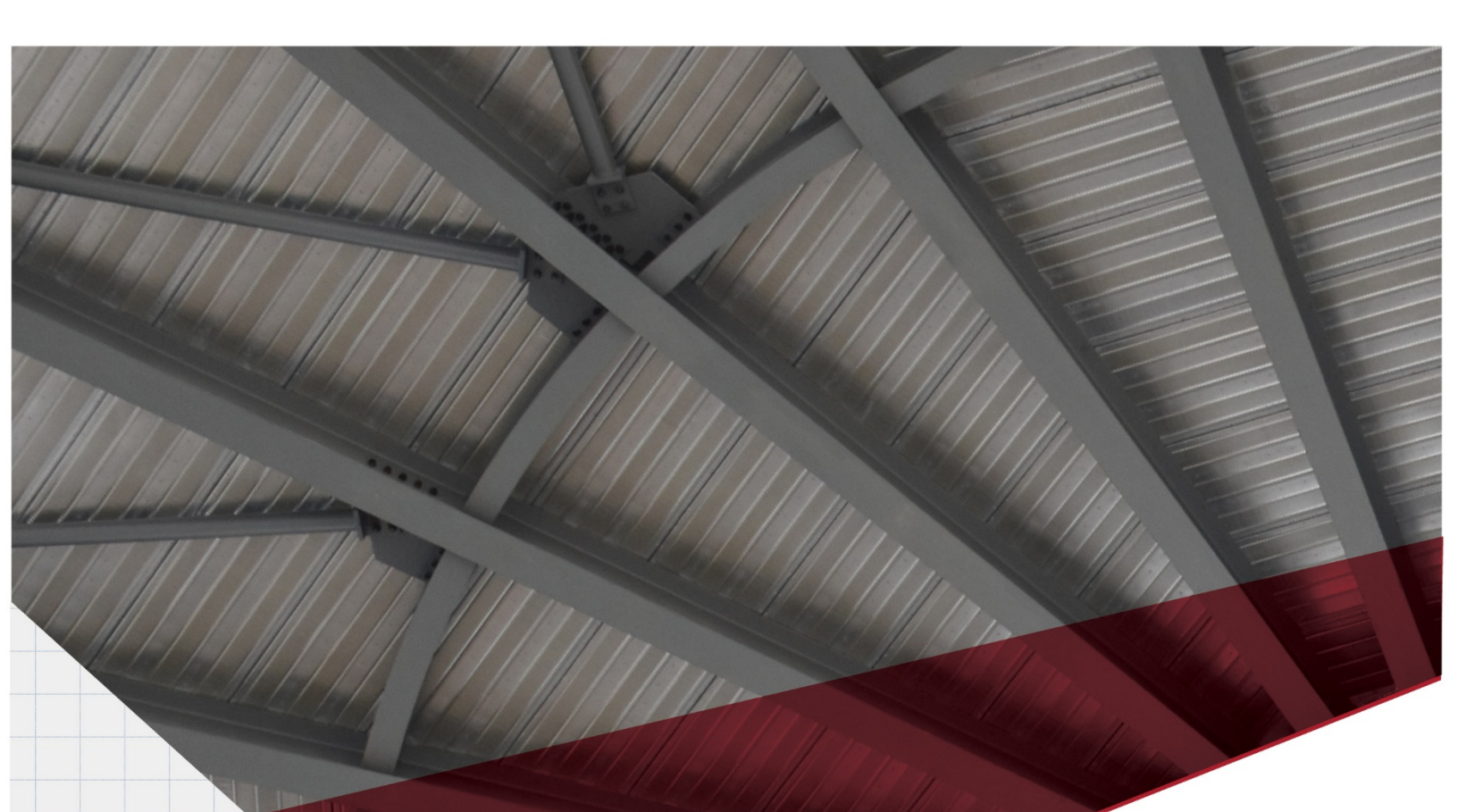
SHEET #	NAME	DATE
1	COVER SHEET	06/12/2019
1A	SIGNATURE SHEET	06/12/2019
2	SUMMARY OF PAY ITEMS	06/12/2019
3	TYPICAL SECTION (1)	06/12/2019
4	TYPICAL SECTION (2)	06/12/2019
5	TYPICAL SECTION (3)	06/12/2019
6	TYPICAL SECTION (4)	06/12/2019
7	GENERAL NOTES	06/12/2019
8	SIGNING AND PAVEMENT MARKING PLAN (1)	06/12/2019
9	SIGNING AND PAVEMENT MARKING PLAN (2)	06/12/2019
10	SIGNING AND PAVEMENT MARKING PLAN (3)	06/12/2019
11	SIGNING AND PAVEMENT MARKING PLAN (4)	06/12/2019
12	SIGNING AND PAVEMENT MARKING PLAN (5)	06/12/2019
13	TEMPORARY TRAFFIC CONTROL PLAN	06/12/2019
SQ-1	SUMMARY OF QUANTITIES	06/12/2019
SQ-2	SUMMARY OF QUANTITIES	06/12/2019
SQ-3	TABULATION OF QUANTITIES	06/12/2019

EXHIBIT D - PROJECT SCHEDULE



NW 16th Terrace
GMP Schedule
Date: Wed 6/12/19





352.745.7877

OELRICHCONSTRUCTION.COM



275 NW 137th Drive, Ste A
Jonesville, FL 32669