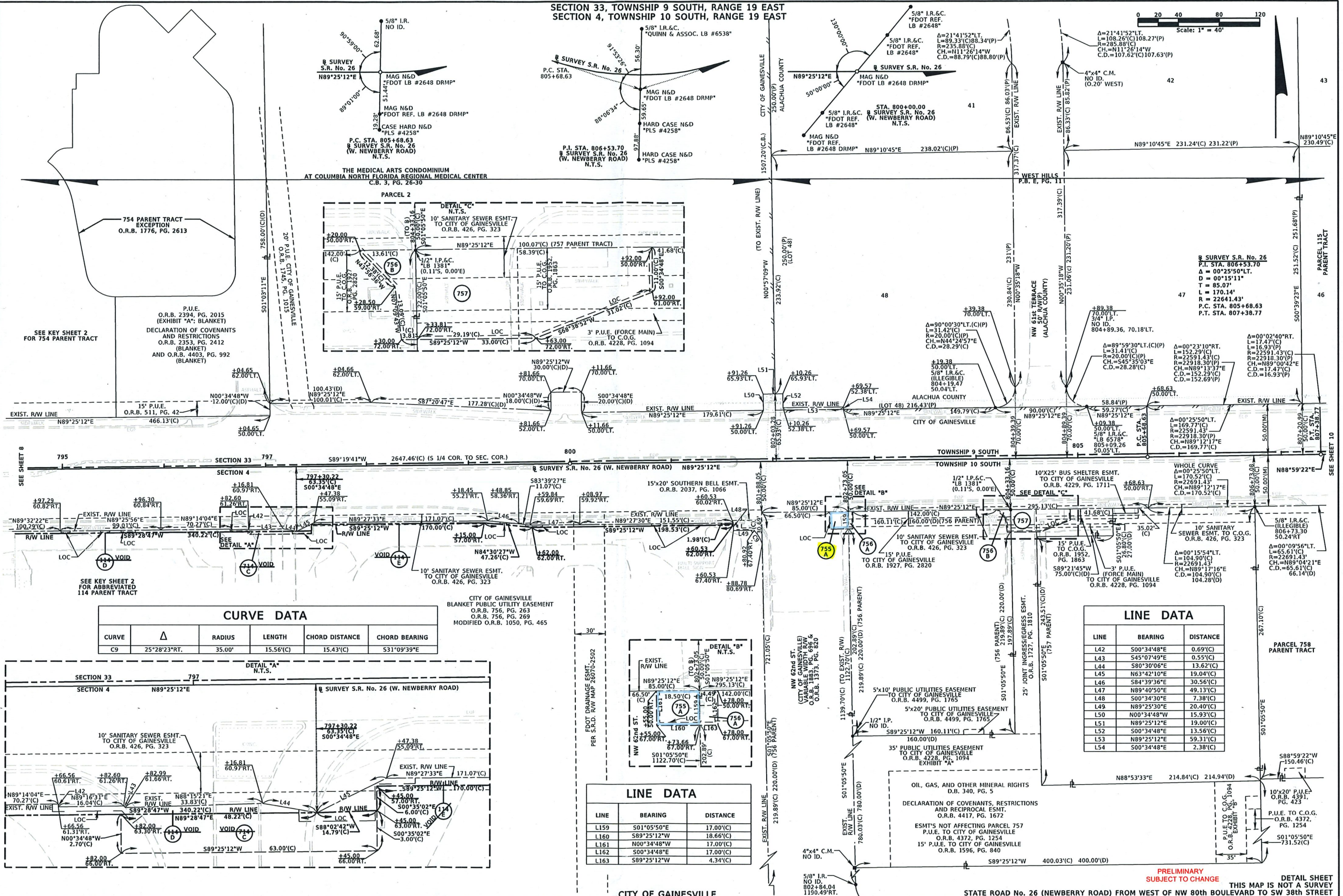
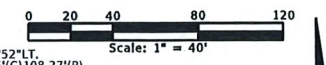


SECTION 33, TOWNSHIP 9 SOUTH, RANGE 19 EAST
SECTION 4, TOWNSHIP 10 SOUTH, RANGE 19 EAST



CURVE DATA

CURVE	Δ	RADIUS	LENGTH	CHORD DISTANCE	CHORD BEARING
C9	25°28'23"RT.	35.00'	15.56'(C)	15.43'(C)	531°09'39"E

LINE DATA

LINE	BEARING	DISTANCE
L42	S00°34'48"E	0.69'(C)
L43	S45°07'49"E	0.55'(C)
L44	S80°30'06"E	13.62'(C)
L45	N63°42'10"E	19.04'(C)
L46	S84°39'36"E	30.56'(C)
L47	N89°40'50"E	49.13'(C)
L48	S00°34'30"E	7.38'(C)
L49	N89°25'30"E	20.40'(C)
L50	N00°34'48"W	15.93'(C)
L51	N89°25'12"E	19.00'(C)
L52	S00°34'48"E	13.56'(C)
L53	N89°25'12"E	59.31'(C)
L54	S00°34'48"E	2.38'(C)

LINE DATA

LINE	BEARING	DISTANCE
L159	S01°05'50"E	17.00'(C)
L160	S89°25'12"W	18.66'(C)
L161	N00°34'48"W	17.00'(C)
L162	S00°34'48"E	17.00'(C)
L163	S89°25'12"W	4.34'(C)

RIGHT OF WAY MAP

FLORIDA DEPARTMENT OF TRANSPORTATION
SURVEYING AND MAPPING

APPROVED BY: [Signature] DATE: 01-03-18
FOR DISTRICT SECRETARY

REVISION	BY	DATE	REVISION	BY	DATE
REV. EXIST. R/W: VOID 114(D) & 714(C)	KAS	07-02-18			

BY	DATE	CHECKED	DATE
PRELIM S.NELMS	09-16-17	AMDERBERG	10-04-17
FINAL B.ROBBINS	11-22-17		

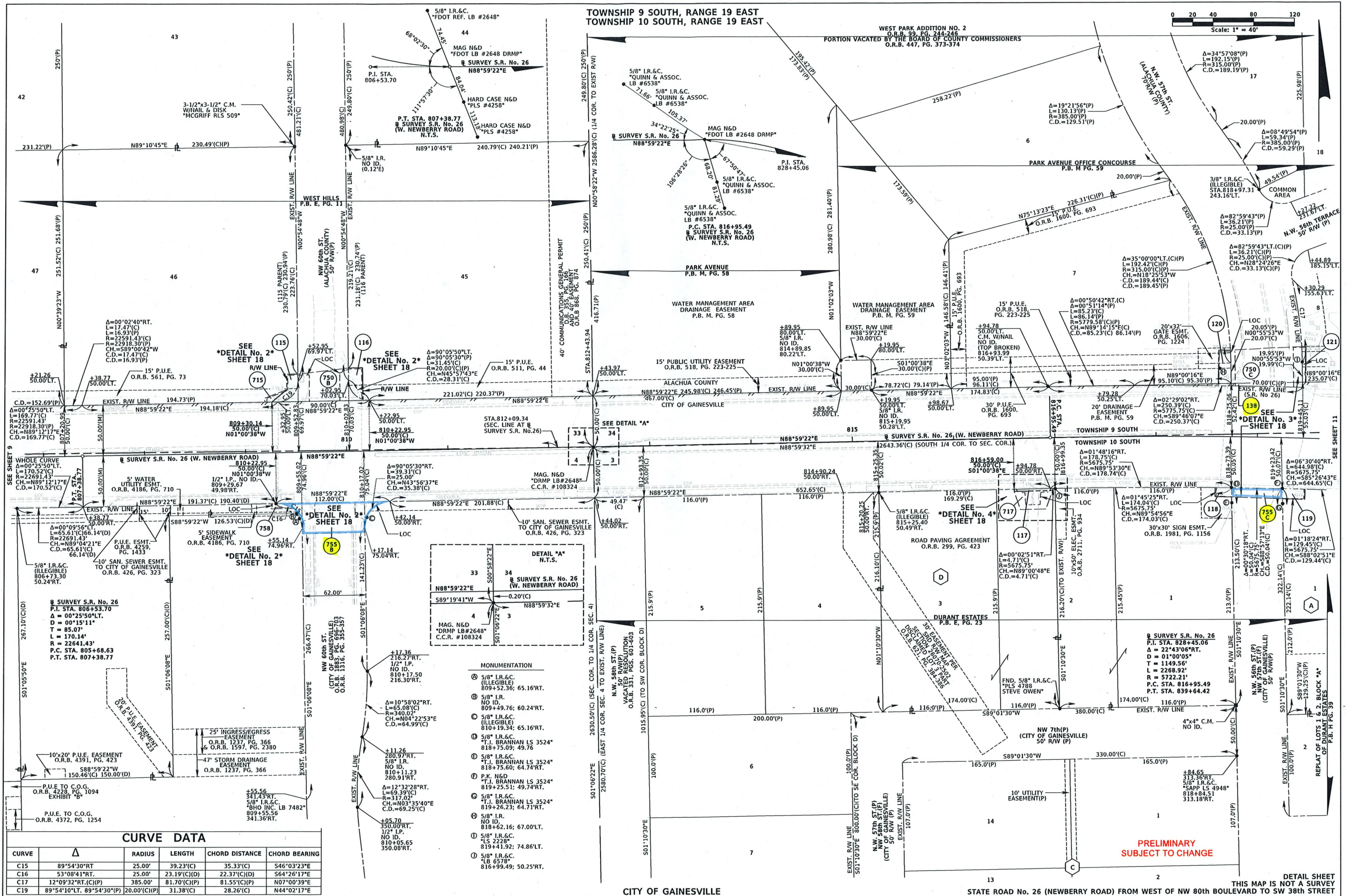
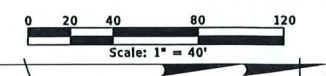
F.A.P. No. N/A
STATE ROAD NO. 26

STATE ROAD No. 26 (NEWBERRY ROAD) FROM WEST OF NW 80th BOULEVARD TO SW 38th STREET

SECTION 26070
ALACHUA COUNTY

PRELIMINARY SUBJECT TO CHANGE
THIS MAP IS NOT A SURVEY
DETAIL SHEET
F.P. NO. 4305422
SHEET 9 OF 23

TOWNSHIP 9 SOUTH, RANGE 19 EAST
TOWNSHIP 10 SOUTH, RANGE 19 EAST



CURVE DATA

CURVE	Δ	RADIUS	LENGTH	CHORD DISTANCE	CHORD BEARING
C15	89°54'30"RT	25.00'	39.23'(C)	35.33'(C)	S46°03'23"E
C16	53°08'41"RT	25.00'	23.19'(C)(D)	22.37'(C)(D)	S64°26'17"E
C17	12°09'32"RT.(C)(P)	385.00'	81.70'(C)(P)	81.55'(C)(P)	N07°00'39"E
C19	89°54'10"LT. 89°54'30"(P)	20.00'(C)(P)	31.38'(C)	28.26'(C)	N44°02'17"E

MONUMENTATION

- ① 5/8" I.R.&C. (ILLEGIBLE) 809+52.36; 65.16'RT.
- ② 5/8" I.R. NO ID. 809+49.76; 60.24'RT.
- ③ 5/8" I.R.&C. (ILLEGIBLE) 810+19.34; 65.16'RT.
- ④ 5/8" I.R.&C. T.J. BRANNAN LS 3524* 818+75.00; 49.76'
- ⑤ 5/8" I.R.&C. T.J. BRANNAN LS 3524* 818+75.60; 64.74'RT.
- ⑥ P.K. NSD T.J. BRANNAN LS 3524* 819+25.51; 49.74'RT.
- ⑦ 5/8" I.R.&C. T.J. BRANNAN LS 3524* 819+26.23; 64.71'RT.
- ⑧ 5/8" I.R. NO ID. 818+62.16; 67.00'LT.
- ⑨ 5/8" I.R.&C. T.S. 2228* 819+41.92; 74.86'LT.
- ⑩ 5/8" I.R.&C. T.S. 2228* 816+99.49; 50.25'RT.

RIGHT OF WAY MAP

FLORIDA DEPARTMENT OF TRANSPORTATION
SURVEYING AND MAPPING

APPROVED BY: [Signature] DATE: 01-03-18
FOR DISTRICT SECRETARY

REVISION	BY	DATE	REVISION	BY	DATE

BY: S.NELMS DATE: 09-16-17
FINAL: B.ROBBINS DATE: 11-22-17
CHECKED: JANDERBERG DATE: 10-04-17

F.A.P. No. N/A
STATE ROAD NO. 26

SECTION 26070
ALACHUA COUNTY

F.P. NO. 4305422

DATA SOURCE: DATABASE #2607002
SCALE: 1" = 40'
SHEET 10 OF 23

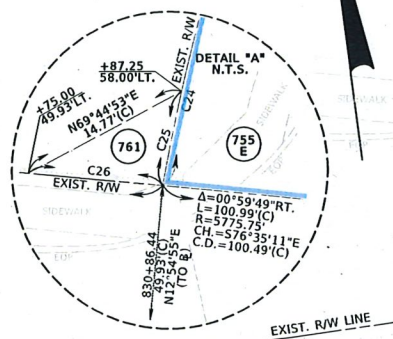
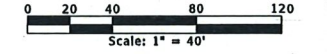
PRELIMINARY
SUBJECT TO CHANGE

THIS MAP IS NOT A SURVEY
REPLAY OF LOTS 1 & 2, BLOCK "A"
OF DURAND ESTATES
P.B. # PG. 39

SECTION 34, TOWNSHIP 9 SOUTH, RANGE 19 EAST
SECTION 3, TOWNSHIP 10 SOUTH, RANGE 19 EAST

CURVE DATA

CURVE	Δ	RADIUS	LENGTH	CHORD DISTANCE	CHORD BEARING
C10	02°29'02"RT.	5775.75'	250.39'(C)	250.37'(C)	S89°46'07"E
C11	00°30'50"RT.	5675.75'	50.92'(C)	50.92'(C)	S80°17'31"E
C24	10°30'25"RT.	250.00'	45.85'(C)	45.78'(C)	N23°02'17"E
C25	01°51'30"LT.	250.00'	8.11'(C)	8.11'(C)	S18°42'49"W
C26	00°06'52"LT.	5775.75'	11.54'(C)	11.54'(C)	N77°08'31"W
C27	12°36'49"RT.	250.00'	55.04'(C)	54.93'(C)	S34°35'54"E
C28	04°04'13"RT.	5775.75'	410.30'(C)	410.21'(C)	S79°14'03"E

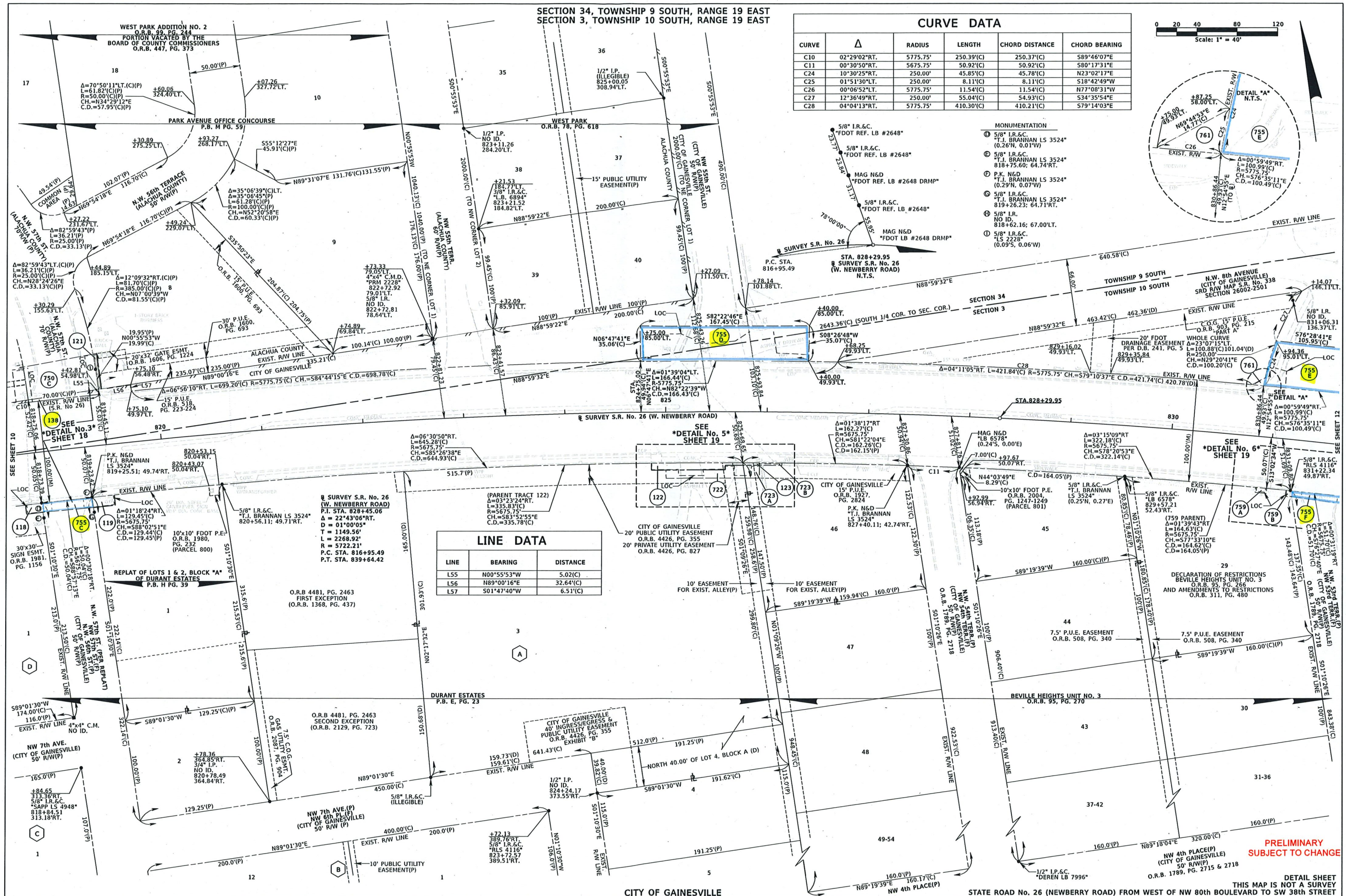


MONUMENTATION

- ① 5/8" I.R.&C. T.J. BRANNAN LS 3524* (0.26"N, 0.01"W)
- ② 5/8" I.R.&C. T.J. BRANNAN LS 3524* 818+75.60; 64.74"RT.
- ③ P.K. N&D T.J. BRANNAN LS 3524* (0.29"N, 0.07"W)
- ④ 5/8" I.R.&C. T.J. BRANNAN LS 3524* 819+26.23; 64.71"RT.
- ⑤ 5/8" I.R. NO ID. 818+62.16; 67.00"LT.
- ⑥ 5/8" I.R.&C. "LS 2228" (0.09"S, 0.06"W)

LINE DATA

LINE	BEARING	DISTANCE
L55	N00°55'53"W	5.02(C)
L56	N89°00'16"E	32.64(C)
L57	S01°47'40"W	6.51(C)



PRELIMINARY SUBJECT TO CHANGE

THIS MAP IS NOT A SURVEY

RIGHT OF WAY MAP

FLORIDA DEPARTMENT OF TRANSPORTATION
SURVEYING AND MAPPING

APPROVED BY: [Signature] DATE: 01-03-18
FOR DISTRICT SECRETARY

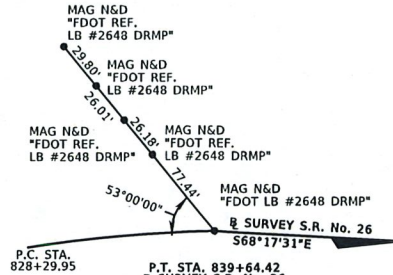
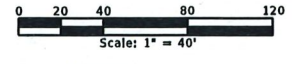
REVISION	BY	DATE	REVISION	BY	DATE

BY: [Signature] DATE: 09-16-17
F.A.P. No. N/A
STATE ROAD NO. 26

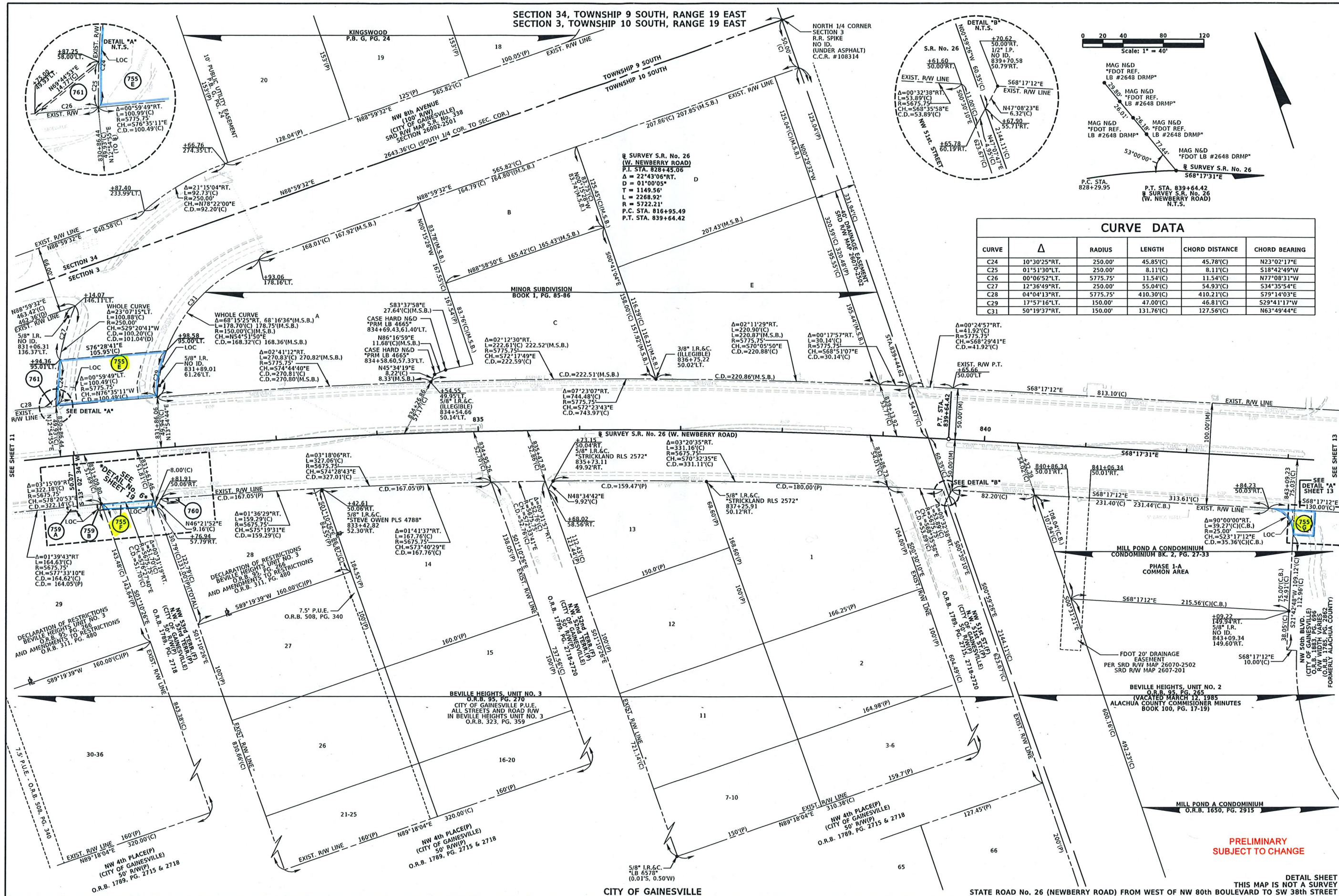
SECTION 26070
ALACHUA COUNTY
F.P. NO. 4305422
SHEET 11 OF 23

MAPS PREPARED BY: DRIP INC. 8001 BELFORT PARKWAY, SUITE 200 JACKSONVILLE, FLORIDA 32256 904-441-0123 LB#2648
DATE: 01-03-18
SCALE: 1" = 40'

SECTION 34, TOWNSHIP 9 SOUTH, RANGE 19 EAST
SECTION 3, TOWNSHIP 10 SOUTH, RANGE 19 EAST



CURVE DATA					
CURVE	Δ	RADIUS	LENGTH	CHORD DISTANCE	CHORD BEARING
C24	10°30'25"RT.	250.00'	45.85'(C)	45.78'(C)	N23°02'17"E
C25	01°51'30"LT.	250.00'	8.11'(C)	8.11'(C)	S18°42'49"W
C26	00°06'52"LT.	5775.75'	11.54'(C)	11.54'(C)	N77°08'31"W
C27	12°36'49"RT.	250.00'	55.04'(C)	54.93'(C)	S34°35'54"E
C28	04°04'13"RT.	5775.75'	410.30'(C)	410.21'(C)	S79°14'03"E
C29	17°57'16"LT.	150.00'	47.00'(C)	46.81'(C)	S29°41'17"W
C31	50°19'37"RT.	150.00'	131.76'(C)	127.56'(C)	N63°49'44"E

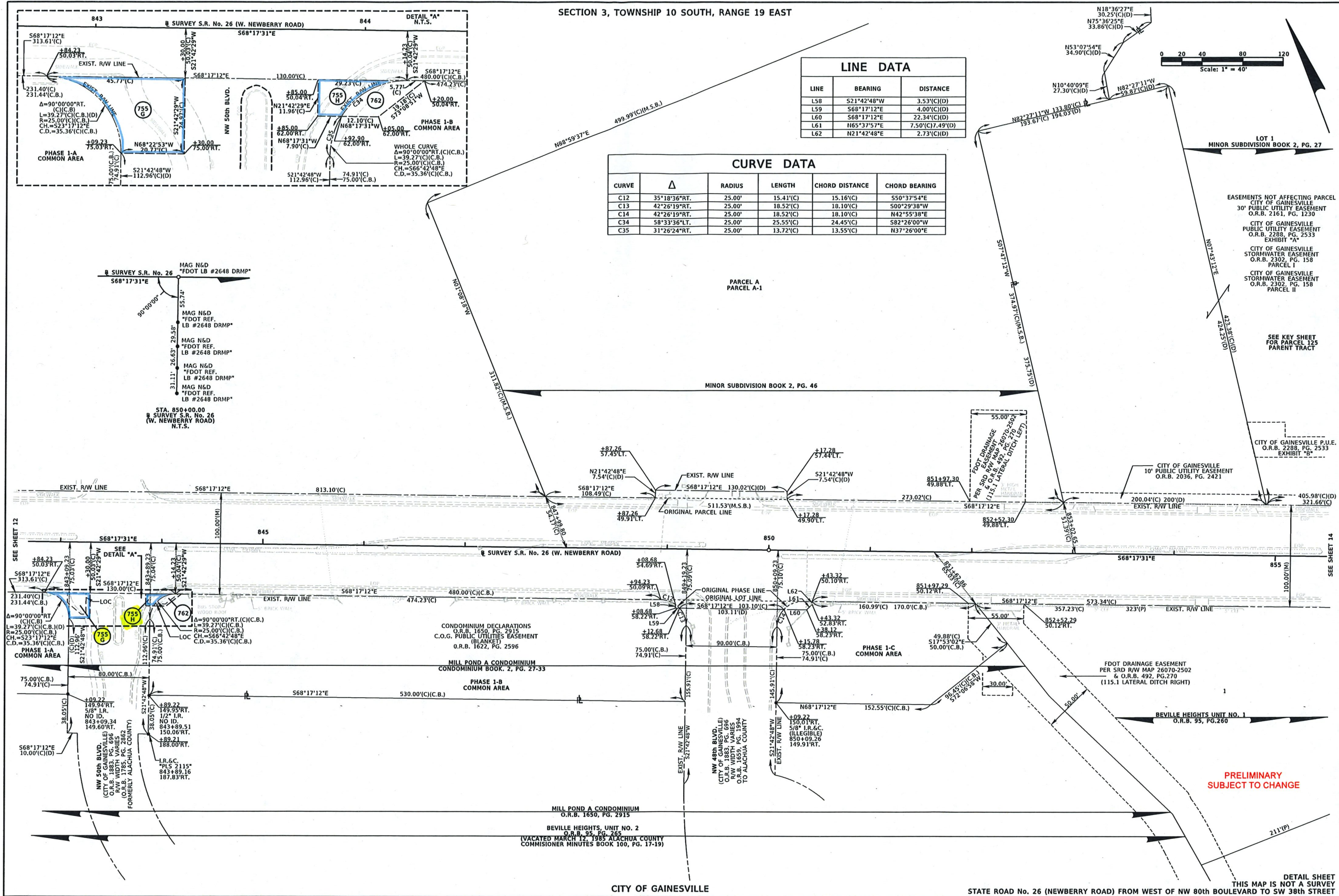


PRELIMINARY
SUBJECT TO CHANGE

THIS MAP IS NOT A SURVEY
DETAIL SHEET

STATE ROAD NO. 26 (NEWBERRY ROAD) FROM WEST OF NW 80th BOULEVARD TO SW 38th STREET

SECTION 3, TOWNSHIP 10 SOUTH, RANGE 19 EAST

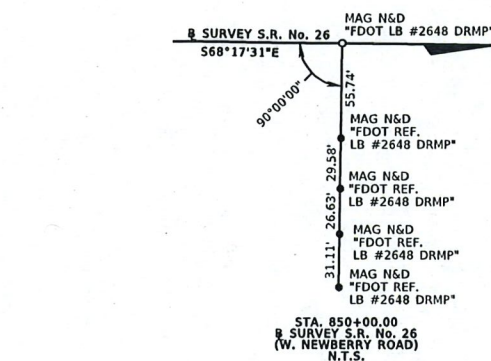


LINE DATA

LINE	BEARING	DISTANCE
L58	S21°42'48"W	3.53'(C)(D)
L59	S68°17'12"E	4.00'(C)(D)
L60	S68°17'12"E	22.34'(C)(D)
L61	N65°37'57"E	7.50'(C)(D)
L62	N21°42'48"E	2.73'(C)(D)

CURVE DATA

CURVE	Δ	RADIUS	LENGTH	CHORD DISTANCE	CHORD BEARING
C12	35°18'36"RT.	25.00'	15.41'(C)	15.16'(C)	S50°37'54"E
C13	42°26'19"RT.	25.00'	18.52'(C)	18.10'(C)	S00°29'38"W
C14	42°26'19"RT.	25.00'	18.52'(C)	18.10'(C)	N42°55'38"E
C34	58°33'36"LT.	25.00'	25.55'(C)	24.45'(C)	S82°26'00"W
C35	31°26'24"RT.	25.00'	13.72'(C)	13.55'(C)	N37°26'00"E



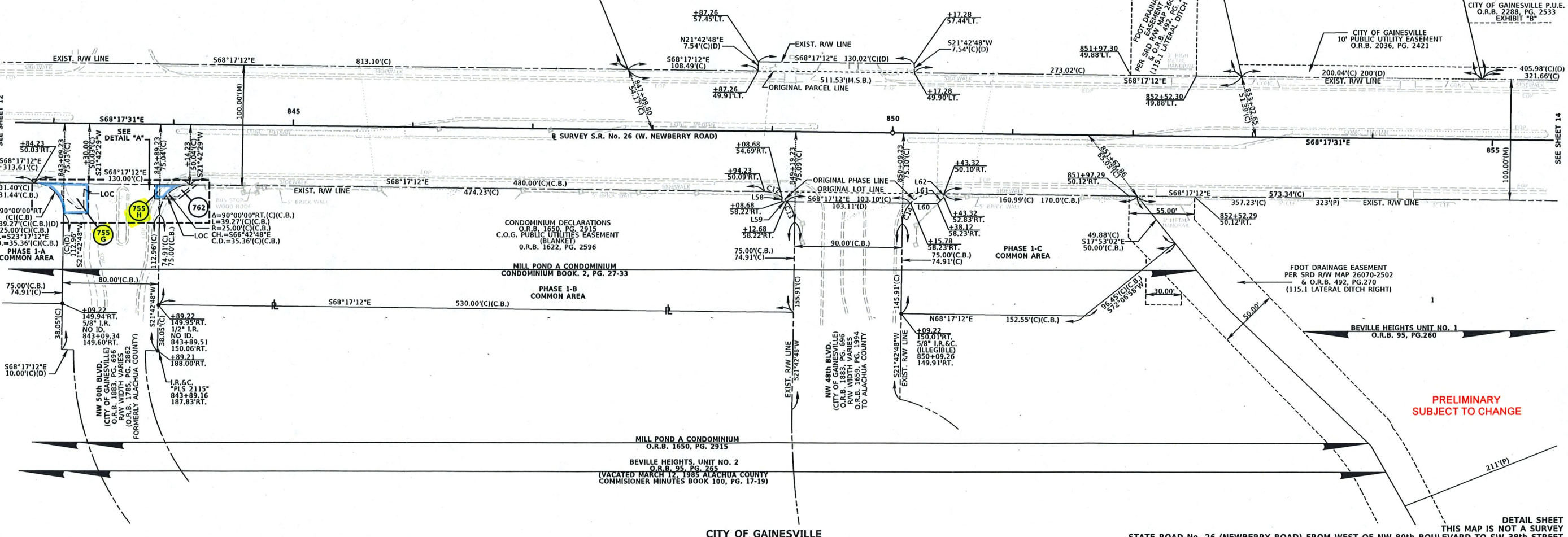
EASEMENTS NOT AFFECTING PARCEL
CITY OF GAINESVILLE
30' PUBLIC UTILITY EASEMENT
O.R.B. 2161, PG. 1230

CITY OF GAINESVILLE
PUBLIC UTILITY EASEMENT
O.R.B. 2288, PG. 2533
EXHIBIT "A"

CITY OF GAINESVILLE
STORMWATER EASEMENT
O.R.B. 2302, PG. 158
PARCEL I

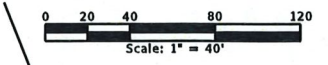
CITY OF GAINESVILLE
STORMWATER EASEMENT
O.R.B. 2302, PG. 158
PARCEL II

SEE KEY SHEET FOR PARCEL 125 PARENT TRACT



**PRELIMINARY
SUBJECT TO CHANGE**

SECTION 3, TOWNSHIP 10 SOUTH, RANGE 19 EAST



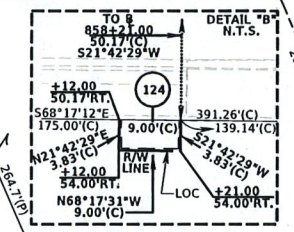
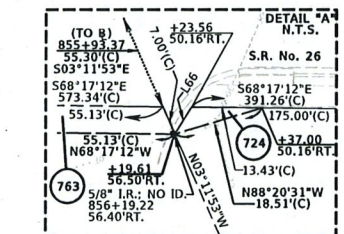
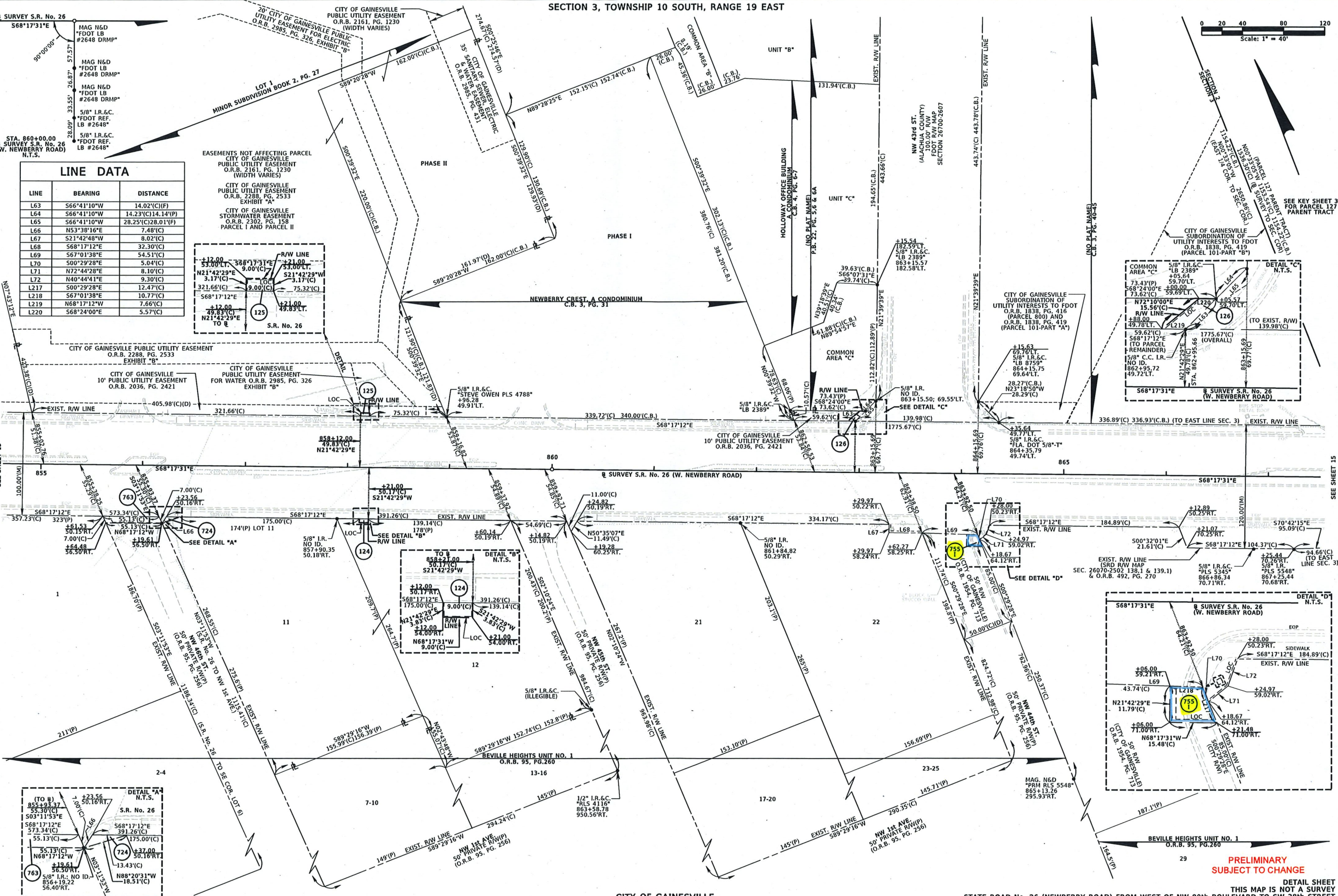
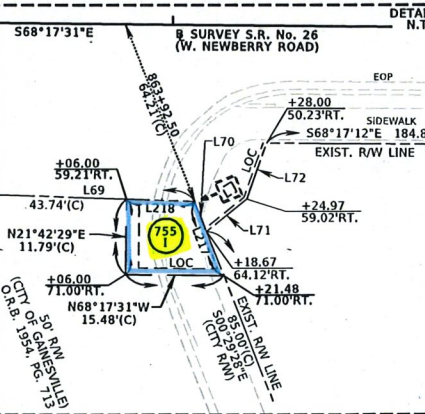
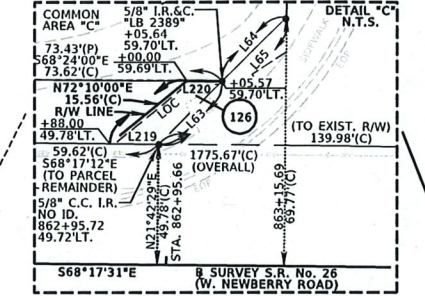
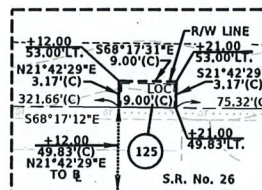
LINE DATA

LINE	BEARING	DISTANCE
L63	S66°41'10"W	14.02'(C)(F)
L64	S66°41'10"W	14.23'(C)14.14'(P)
L65	S66°41'10"W	28.25'(C)28.01'(F)
L66	N53°38'16"E	7.48'(C)
L67	S21°42'48"W	8.02'(C)
L68	S68°17'12"E	32.30'(C)
L69	S67°01'38"E	54.51'(C)
L70	S00°29'28"E	5.04'(C)
L71	N72°44'28"E	8.10'(C)
L72	N40°44'41"E	9.30'(C)
L217	S00°29'28"E	12.47'(C)
L218	S67°01'38"E	10.77'(C)
L219	N68°17'12"W	7.66'(C)
L220	S68°24'00"E	5.57'(C)

EASEMENTS NOT AFFECTING PARCEL
CITY OF GAINESVILLE
PUBLIC UTILITY EASEMENT
O.R.B. 2161, PG. 1230
(WIDTH VARIES)

CITY OF GAINESVILLE
PUBLIC UTILITY EASEMENT
O.R.B. 2288, PG. 2533
EXHIBIT "A"

CITY OF GAINESVILLE
STORMWATER EASEMENT
O.R.B. 2302, PG. 158
PARCEL I AND PARCEL II



**PRELIMINARY
SUBJECT TO CHANGE**

THIS MAP IS NOT A SURVEY
DETAIL SHEET

RIGHT OF WAY MAP

FLORIDA DEPARTMENT OF TRANSPORTATION
SURVEYING AND MAPPING

APPROVED BY	DATE	BY	DATE
	01-03-18	PRELIM	09-16-17
FOR DISTRICT SECRETARY		FINAL	11-22-17
		CHECKED	10-04-17
REVISION	BY	DATE	REVISION

F.A.P. No. N/A
STATE ROAD NO. 26

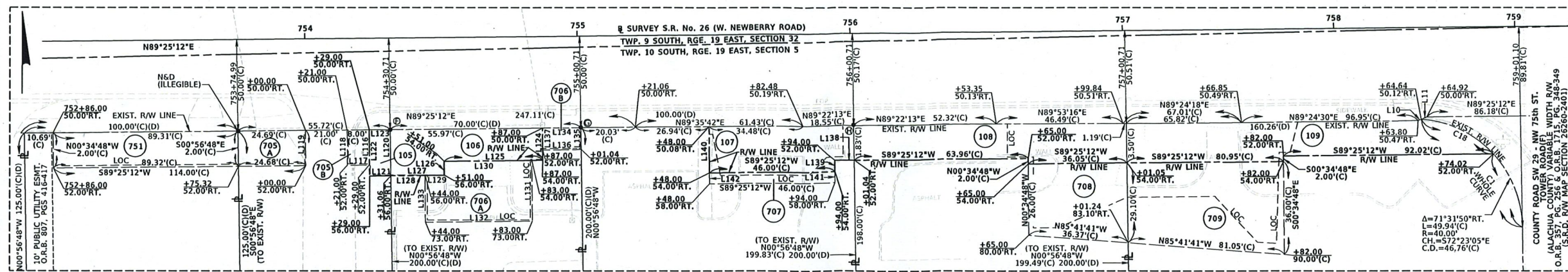
SECTION 26070
ALACHUA COUNTY
F.P. NO. 4305422

MAPS PREPARED BY:
DRMP INC.
8001 BELFORT PARKWAY, SUITE 200
JACKSONVILLE, FLORIDA 32256
904-441-0122 LB2648

DATA SOURCE:
DATABASE #2607002
SCALE: 1"=40'

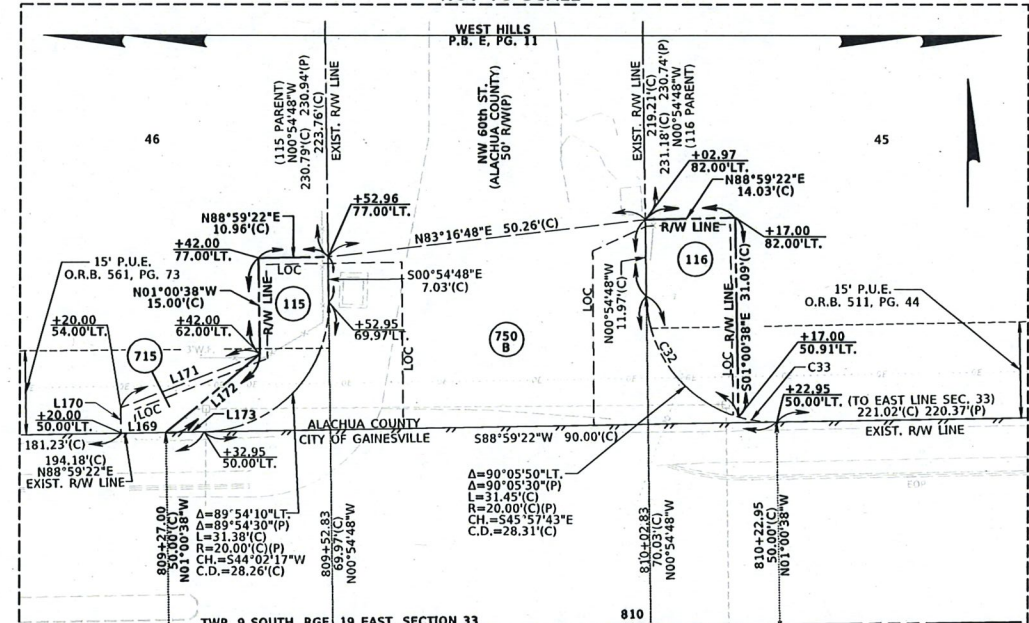
SHEET 14 OF 23

DETAIL No. 1 FROM SHEET 5
NOT TO SCALE



- MONUMENTATION
- ① 5/8" I.R.C. (ILLEGIBLE) 809+52.36; 65.16'RT.
 - ② 5/8" I.R. NO ID. 809+49.76; 60.23'RT.
 - ③ 5/8" I.R.C. (ILLEGIBLE) 810+19.34; 65.16'RT.
 - ④ 5/8" I.R.C. "T.J. BRANNAN LS 3524" 818+75.09; 49.76'RT.
 - ⑤ 5/8" I.R.C. "T.J. BRANNAN LS 3524" 818+75.80; 64.74'RT.
 - ⑥ P.K. N&D "T.J. BRANNAN LS 3524" 819+25.51; 49.74'RT.
 - ⑦ 5/8" I.R.C. "T.J. BRANNAN LS 3524" 819+26.23; 64.71'RT.
 - ⑧ 5/8" I.R. NO ID. 818+62.16; 67.00'LT.
 - ⑨ 5/8" I.R.C. LS 2228 819+41.92; 74.86'LT.
 - ⑩ 5/8" I.R.C. "LB 6578" 816+99.49; 50.25'RT.

DETAIL No. 2 FROM SHEET 10
NOT TO SCALE



CURVE DATA

CURVE	Δ	RADIUS	LENGTH	CHORD DISTANCE	CHORD BEARING
C1	85°16'09"RT.	40.00'	59.53'(C)62.58'(D)	54.19'(C)56.39'(D)	S43°29'19"E
C15	89°54'30"LT.	25.00'	39.23'(C)	35.33'(C)	N46°03'23"W
C16	53°08'41"RT.	25.00'	23.19'(C)(D)	22.37'(C)(D)	S64°26'17"E
C17	12°09'32"RT.(C)(P)	385.00'	81.70'(C)(P)	81.55'(C)(P)	N07°00'39"E
C18	13°44'19"RT.	40.00'	9.59'(C)	9.57'(C)	S79°15'14"E
C20	00°01'20"RT.	5675.75'	2.20'(C)	2.20'(C)	N89°00'02"E
C21	00°01'31"RT.	5675.75'	2.51'(C)	2.51'(C)	N89°01'28"E
C22	01°35'45"RT.	5675.75'	158.08'(C)	158.07'(C)	N89°50'06"E
C23	36°52'12"RT.	25.00'(C)(P)	16.09'(C)	15.81'(C)	S72°34'32"E
C29	02°14'33"LT.	385.00'	15.07'(C)	15.07'(C)	N02°03'10"W
C30	09°54'59"LT.	385.00'	66.63'(C)	66.55'(C)	N08°07'56"W
C32	72°46'53"RT.	20.00'	25.41'(C)	23.73'(C)	N37°18'14"W
C33	17°18'57"RT.	20.00'	6.04'(C)	6.02'(C)	N82°21'09"W

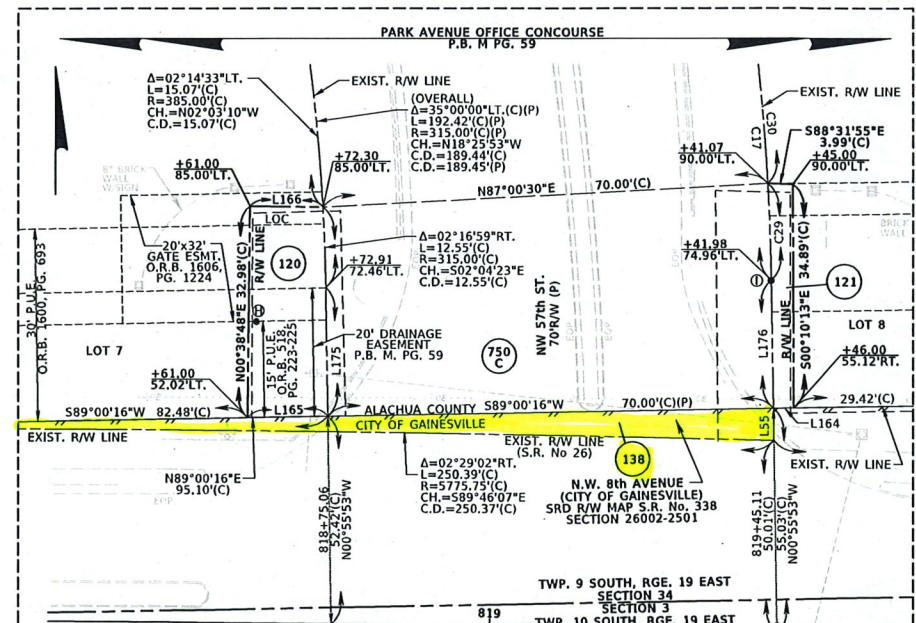
LINE DATA

LINE	BEARING	DISTANCE
L10	N66°48'55"E	0.90'(C)
L11	N66°48'55"E	0.31'(C)
L55	N00°55'53"W	5.02'(C)
L116	S00°34'48"E	2.00'(C)
L117	S89°25'12"W	8.00'(C)
L118	N00°34'48"W	2.00'(C)
L119	S00°34'48"E	2.00'(C)
L120	S00°56'48"E	6.00'(C)
L121	S89°25'12"W	2.07'(C)
L122	N00°34'48"W	6.00'(C)
L123	N89°25'12"E	2.03'(C)
L124	S00°34'48"E	4.00'(C)
L125	S89°25'12"W	36.00'(C)
L126	S00°34'48"E	2.00'(C)
L127	S89°25'12"W	19.93'(C)
L128	N89°25'12"E	12.93'(C)
L129	N89°25'12"E	7.00'(C)
L130	N89°25'12"E	32.00'(C)
L131	S00°34'48"E	19.00'(C)
L132	S89°25'12"W	39.00'(C)
L133	N00°34'48"W	17.00'(C)
L134	N89°25'12"E	14.03'(C)

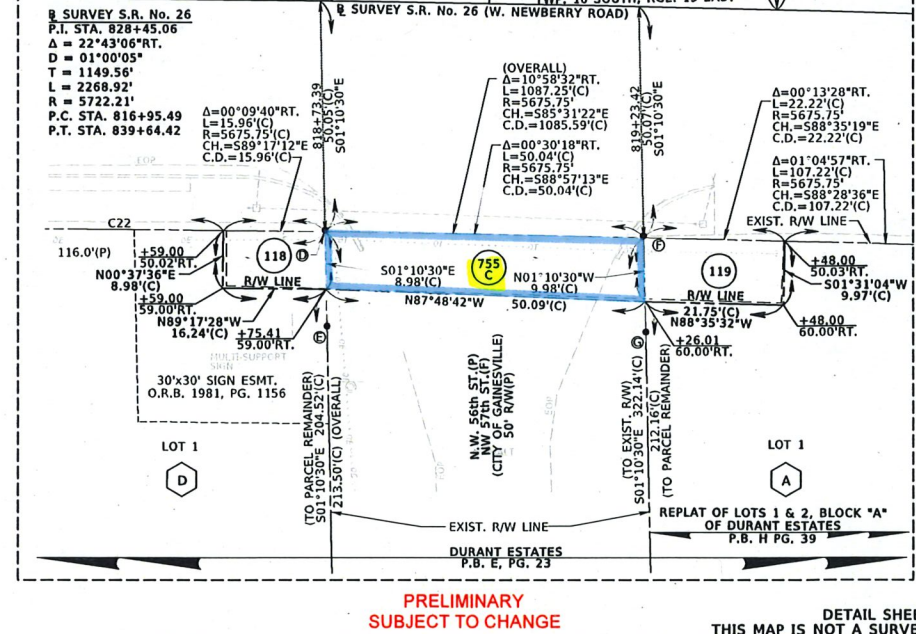
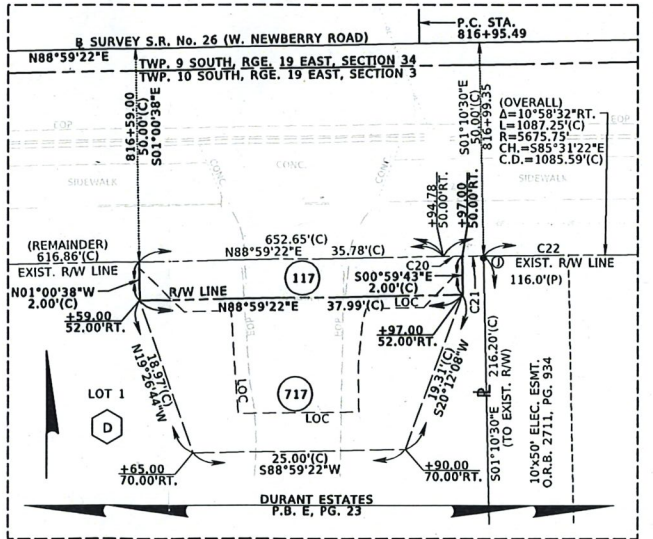
LINE DATA

LINE	BEARING	DISTANCE
L135	S00°56'48"E	2.00'(C)
L136	S89°25'12"W	14.04'(C)
L137	N00°34'48"W	2.00'(C)
L138	S89°25'12"W	7.04'(C)
L139	S00°34'48"E	2.00'(C)
L140	N00°34'48"W	3.92'(C)
L141	S00°34'48"E	4.00'(C)
L142	N00°34'48"W	4.00'(C)
L164	S89°00'16"W	3.23'(C)
L165	S89°00'16"W	12.62'(C)
L166	S89°17'48"E	11.47'(C)
L167	S88°59'22"W	20.14'(C)
L168	N01°00'38"W	5.00'(C)
L169	S88°59'22"W	7.00'(C)
L170	N01°00'38"W	4.00'(C)
L171	N69°00'23"E	23.41'(C)
L172	N50°19'47"E	19.21'(C)
L173	S88°59'22"W	5.95'(C)
L174	N88°59'22"E	5.14'(C)
L175	S00°55'53"E	20.07'(C)
L176	N00°55'53"W	19.99'(C)

DETAIL No. 3 FROM SHEET 10
NOT TO SCALE

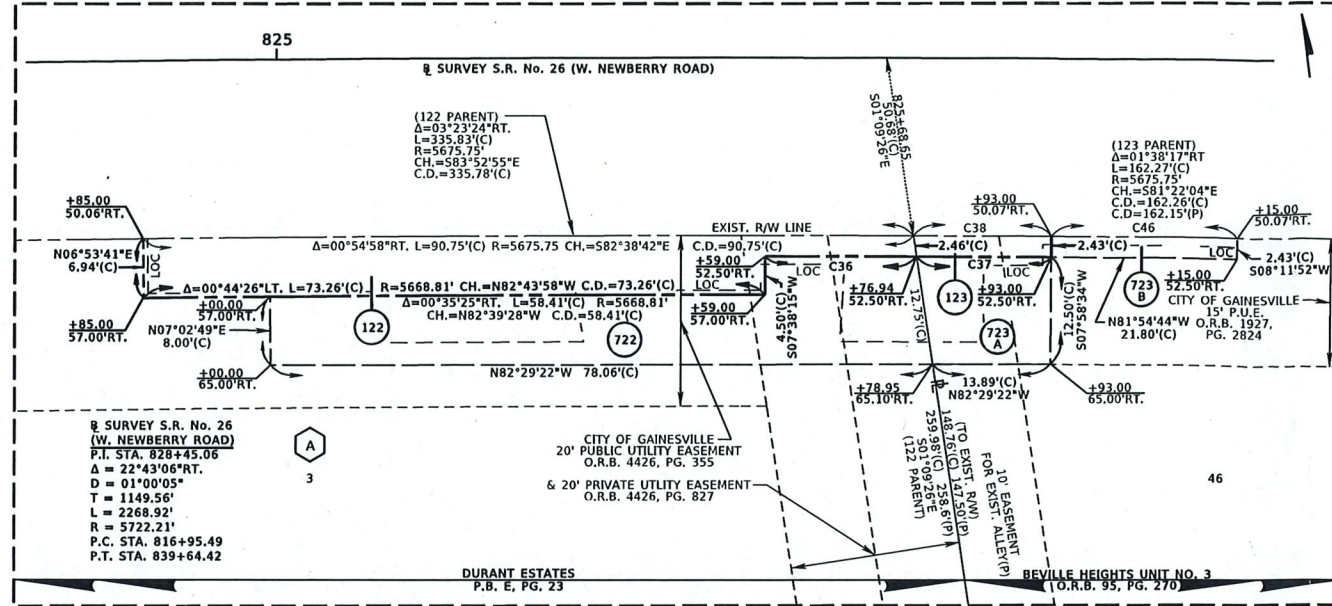


DETAIL No. 4 FROM SHEET 10
NOT TO SCALE

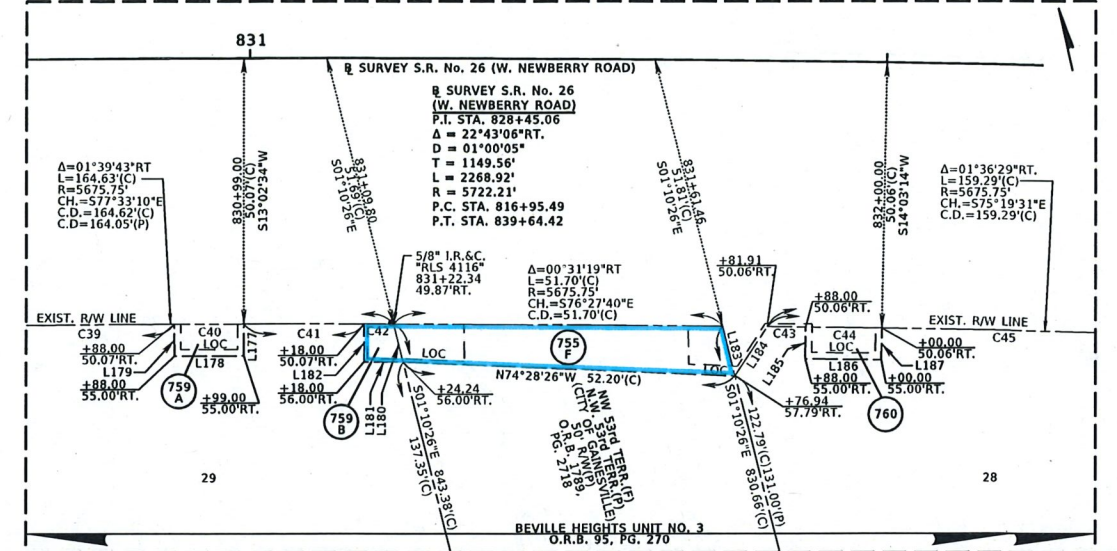


PRELIMINARY SUBJECT TO CHANGE
STATE ROAD No. 26 (NEWBERRY ROAD) FROM WEST OF NW 80th BOULEVARD TO SW 308th STREET

DETAIL No. 5 FROM SHEET 11
NOT TO SCALE



DETAIL No. 6 FROM SHEETS 11 & 12
NOT TO SCALE

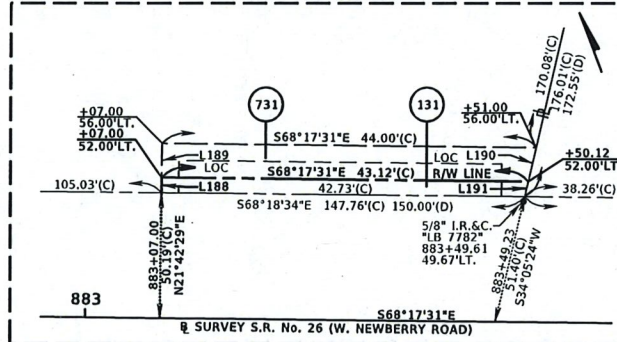


CURVE	Δ	RADIUS	LENGTH	CHORD DISTANCE	CHORD BEARING
C36	00°10'46"RT.	5673.32'	17.78'(C)	17.78'(C)	N82°16'22"W
C37	00°09'38"LT.	5673.32'	15.91'(C)	15.91'(C)	N82°06'10"W
C38	00°09'52"RT.	5675.75'	16.30'(C)	16.30'(C)	S82°06'17"E
C39	01°18'53"RT.	5675.75'	130.23'(C)	130.23'(C)	S77°43'35"E
C40	00°06'36"RT.	5675.75'	10.90'(C)	10.90'(C)	S77°00'51"E
C41	00°11'24"RT.	5675.75'	18.83'(C)	18.83'(C)	S76°51'50"E
C42	00°02'49"RT.	5675.75'	4.66'(C)	4.66'(C)	S76°44'44"E
C43	00°03'39"RT.	5675.75'	6.03'(C)	6.03'(C)	S76°05'56"E
C44	00°07'12"RT.	5675.75'	11.90'(C)	11.90'(C)	S76°00'30"E
C45	01°25'37"RT.	5675.75'	141.36'(C)	141.36'(C)	S75°14'06"E
C46	00°13'13"RT.	5675.75'	21.81'(C)	21.81'(C)	S81°54'44"E
C47	16°55'06"LT.	305.72'	90.27'(C)	89.95'(C)	S47°53'05"E
C48	04°26'13"LT.	305.72'	23.67'(C)	23.67'(C)	S58°33'44"E
C49	06°03'45"RT.	305.72'	32.35'(C)	32.33'(C)	N63°48'43"W
C50	01°27'58"LT.	305.72'	7.82'(C)	7.82'(C)	N67°34'35"W
C51	07°31'43"LT.	305.72'	40.17'(C)	40.14'(C)	S64°32'42"E

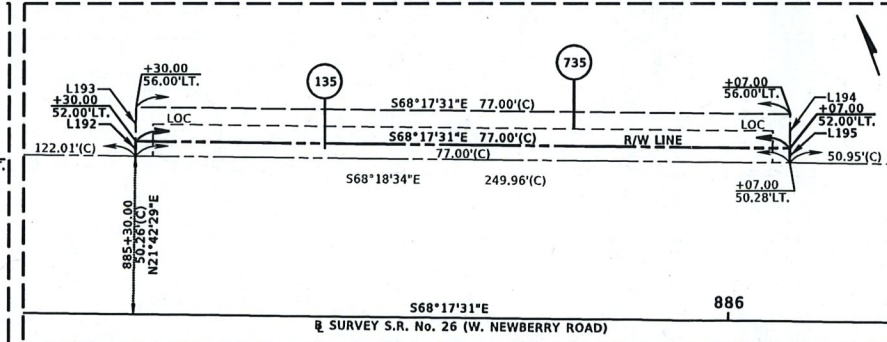
LINE	BEARING	DISTANCE
L177	S13°02'34"W	4.93'(C)
L178	N77°00'45"W	10.89'(C)
L179	N12°55'57"E	4.93'(C)
L180	S01°10'26"E	6.13'(C)
L181	N76°43'55"W	6.18'(C)
L182	N13°13'58"E	5.93'(C)
L183	S01°10'26"E	8.00'(C)
L184	N46°21'52"E	9.16'(C)
L185	N13°56'02"E	4.94'(C)
L186	N76°00'22"W	11.88'(C)
L187	S14°03'14"W	4.94'(C)
L188	N21°42'29"E	1.81'(C)
L189	N21°42'29"E	4.00'(C)
L190	S34°05'24"W	4.10'(C)
L191	S34°05'24"W	1.84'(C)
L192	N21°42'29"E	1.74'(C)
L193	N21°42'29"E	4.00'(C)
L194	S21°42'29"W	4.00'(C)
L195	S21°42'29"W	1.72'(C)
L196	S11°37'15"W	2.28'(C)

LINE	BEARING	DISTANCE
L197	N68°17'31"W	4.79'(C)
L198	N21°42'29"E	2.24'(C)
L199	S68°18'34"E	4.39'(C)
L200	S01°10'26"E	8.13'(C)
L201	N21°42'29"E	8.00'(C)
L202	S21°42'29"W	2.25'(C)
L203	N21°42'29"E	2.64'(C)
L204	S21°42'29"W	2.53'(C)
L205	N21°42'29"E	4.00'(C)
L206	S21°42'29"W	4.00'(C)
L207	N21°42'29"E	1.60'(C)
L208	N21°42'29"E	1.58'(C)
L209	N21°42'29"E	4.00'(C)
L210	S21°42'29"W	4.00'(C)
L211	S21°42'29"W	2.35'(C)
L212	N21°42'29"E	2.33'(C)
L213	S68°17'31"E	4.10'(C)
L214	S21°42'29"W	2.35'(C)
L215	S68°18'34"E	4.12'(C)
L216	S21°20'54"W	10.00'(C)

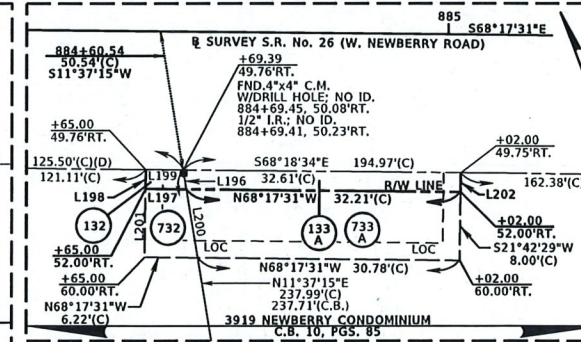
DETAIL No. 7 FROM SHEET 16
NOT TO SCALE



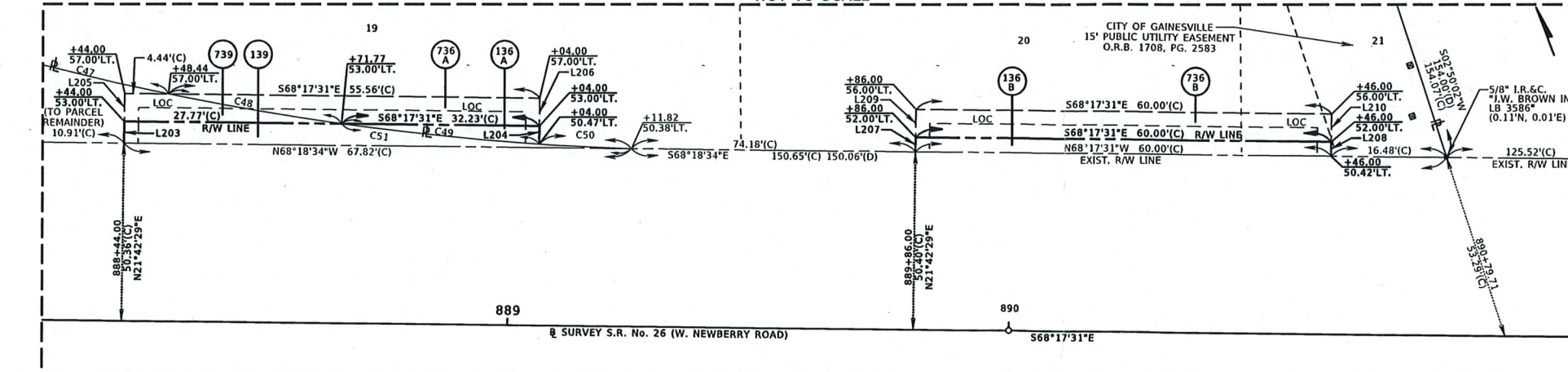
DETAIL No. 8 FROM SHEET 16
NOT TO SCALE



DETAIL No. 10 FROM SHEET 16
NOT TO SCALE



DETAIL No. 9 FROM SHEET 16
NOT TO SCALE



DETAIL No. 11 FROM SHEET 16
NOT TO SCALE

