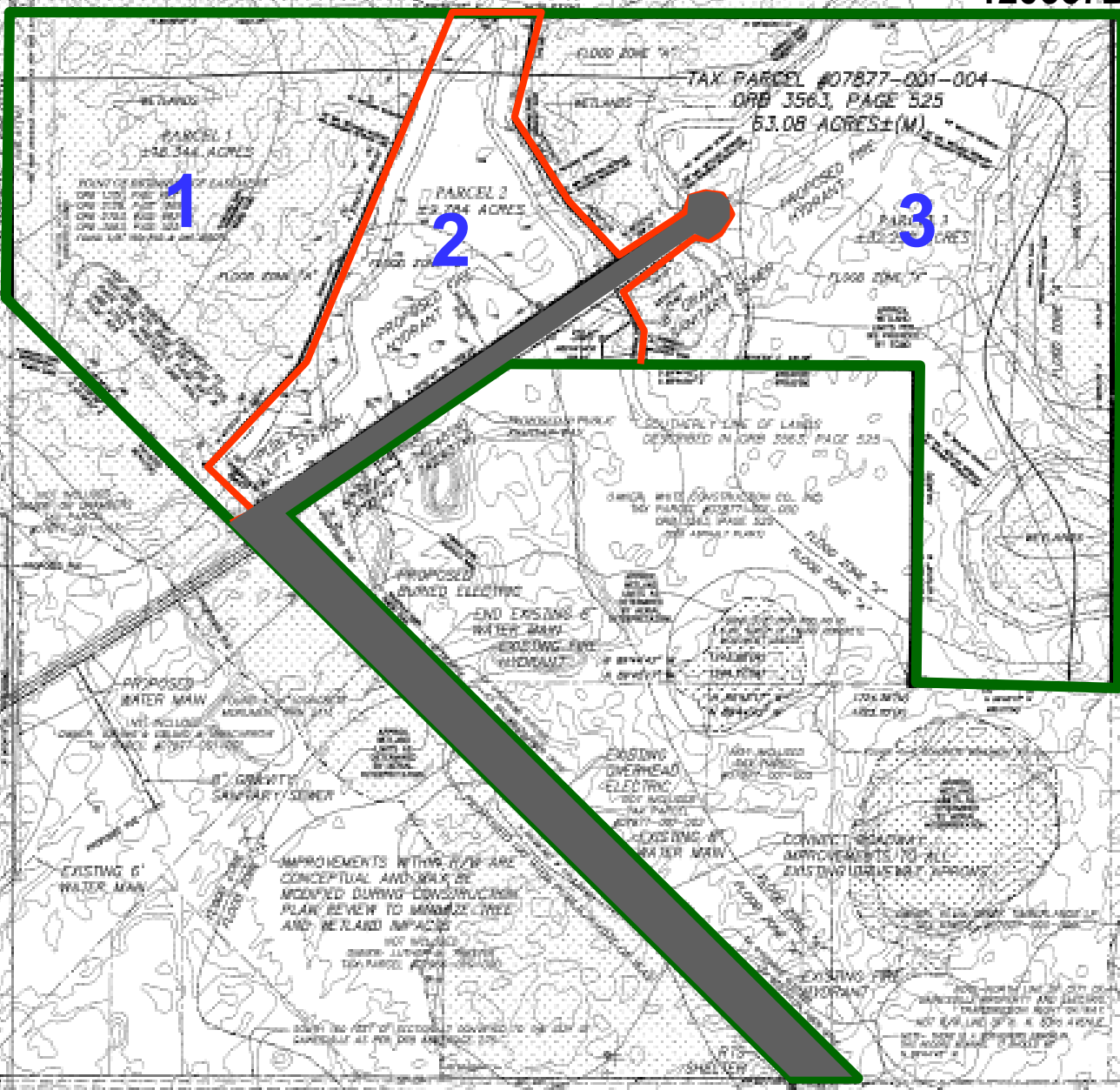


LEGISLATIVE #

120667A

RELAND LOTS ARE FROM
SURVEY DATA FROM
MORSEY, DAVIS & ASSOCIATES
INC. DATED 05-19-2009 FOR
FIELD DELINEATION BY EDWARD
05-12-2009.



TAX PARCEL #07877-001-004
ORB 3563, PAGE 525
63.08 ACRES±(M)

1

2

3

IMPROVEMENTS WITHIN THIS ARE
CONCEPTUAL AND WILL BE
ADDED DURING CONSTRUCTION
PLAN REVIEW TO MINIMIZE TREE
AND RETIARD IMPACTS

CONNECT ROADWAY
IMPROVEMENTS TO ALL
EXISTING LOTS IN THIS APPROX



CAUTION: HAZARD & WASTE
Engineering • Consulting
with our 100+ years of experience
we are the industry leader.

CHW
Crawford, Harwell & White
INCORPORATED
1000 WEST 10TH AVENUE
DENVER, CO 80202
TEL: 303.733.1100
WWW.CHWENR.COM

PROJECT NO. 120667B
DATE: 07-11-14

1. LOCATION
2. SHEET NO.
3. DRAWING NO.
4. DATE
5. REVISION NO.