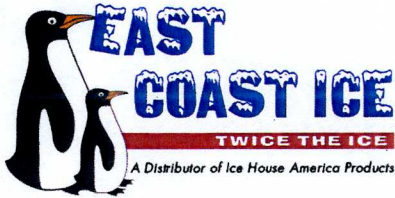


LEGISLATIVE #

110112B



March 8, 2011

Onelia Lazzari, AICP
Principal Planner
City of Gainesville
PO Box 490, Station 11
Gainesville, FL 32602-0490

Dear Ms. Lazzari,

As we discussed in our previous meeting and after having been directed by your City Council and Plan Board to work hand in hand with your department to reach a workable solution, I offer the following code revision and illustrative photos to appear before the Plan Board on April 28, 2011.

As soon as you receive this package, if you would like to discuss or have me fill out a formal application in anticipation of the March 21st deadline for that meeting, please let me know.

We look forward to working with the City of Gainesville to reach common ground as best befits your city and East Coast Ice.

Sincerely,

ICE HOUSE AMERICA, LLC
EAST COAST ICE, LLC

Jason Cleghorn
Compliance Director
East Coast Ice, LLC
Phone: 904-241-0063 x 301

Cc: Matt Tuohy, ECI
Erik Bredfeldt, Planning Director, City of Gainesville

Table of Contents

1. Draft language for Land Development Code change (addition to Section 30)
2. Earth tone painted machine with non blue awning
3. Faux brick machine done in earth tone
4. Standard machine but with brick skirting
5. Example of completely screened rooftop materials
6. Several photos of a well landscaped machine install in Bunnell
7. Another brick skirted machine near a tree line
8. Schematics showing ability to screen machinery
9. Reduced signage depicted
10. Earth tone machines with reduced signage and enclosed roofs

Sec. 30-119. - Retail sales of electric golf carts.

The below listed requirements apply only when a special use permit is required for this use. The requirements do not apply when this use is permitted as a use by right under automotive dealers and gasoline service stations (MG-55).

- (a) Retail sales of electric golf carts shall be allowed only when co-located with an auto and home supply store (GN-553) and no more than 30 percent of the floor area of the store is devoted to the retail sales of electric golf carts.
- (b) Retail sales of electric golf carts does not include service (including battery installation) and/or repair of electric golf carts. Service and/or repair of electric golf carts is classified for zoning use purposes as limited automotive services.
- (c) No outdoor storage is allowed between the building and any public right-of-way and all outdoor storage shall be located only in the rear or side yard; however, a maximum of five electric golf carts may be displayed between the building and the public right-of-way.
- (d) Where the side or rear yard abuts a residential district or is shown for residential use on the future land use map of the comprehensive plan, any outdoor storage areas that are located in the side or rear yard shall have twice the amount of landscaping material that is required for buffer type E in section 30-253, and shall have 50 percent opacity at the time of planting.
- (e) The design and placement of all required landscaping shall be determined during development plan review.

(Ord. No. 100023, § 3, 9-16-10)

Sec. 30-120 Retail sales of ice.

The below listed requirements apply only when a special use permit is required for this use. These requirements do not apply when this use is permitted as a use by right in the Business Industrial (BI), Warehouse (W), Limited Industrial District (I-1), and the General Industrial District (I-2).

- (a) Retail sales of ice shall be allowed only when co-located with an existing commercial use and shall not be permitted in locations currently occupied by a use defined as residential by this code and shall be spaced no closer than one (1) mile from each other.
- (b) A special use permit as defined within Article VII, Division V of this Code will be required for retail sales of ice in the Mixed Use Low Intensity (MU-1), Mixed Use Medium Intensity (MU-2), General Business District (BUS), Automotive Oriented Business District (BA), Tourist Oriented Business District (BT), Urban Mixed Use District 1 (UMU-1), Urban Mixed Use District 2 (UMU-2), and Central City District (CCD).
- (c) In addition to the criteria set forth in Article VII, Division V of the Code pertaining to Special Use Permits, where possible retail ice machines shall incorporate the criteria outlined in Part II, Appendix A, Section V, Special Area Plan for Central Corridors to include considerations of build-to lines, parking, building orientation, mechanical equipment screening and shall be designed to minimize interruption of pedestrian traffic.
- (d) The design of retail ice machines shall incorporate principles which maximize pedestrian and bicycle safety and convenience, ensure adequate queuing space for vehicles such that there is no backup of traffic onto adjacent roadways, minimize the visual impact on street frontage

areas and be designed such that internal pedestrian access and safety as relates to the placement of the machine is considered.

- (e) In accordance with the City of Gainesville's use of the Munsell Color Scale, retail ice machines shall utilize the Advisory Color Guidelines document dated January 26, 2005 and will be designed such that soft earth tone colors are chosen which are generally comparable to nearby commercial establishments. Rooftop mechanical equipment shall be screened in a chroma, hue and value consistent with the framework of the aforementioned document.

11/04/2010

110112B



THE
 THE
 LEASE AREA

ATTENTION
 For your safety

BAG

BAG





110112B

5 6:09PM

110112B

NOW OPEN
20 LBS. \$1.50
ICE



110112B



110112B



110112B



16^{lb} BAG

20^{lb} BULK

\$1.75



Fresh Water
FILTERED WATER

25¢
GALLON

\$7.00
15 GALLONS



2X
TWICE
THE

ICE

ICE HOUSE AMERICA



110112B



110112B



110112B



110112B





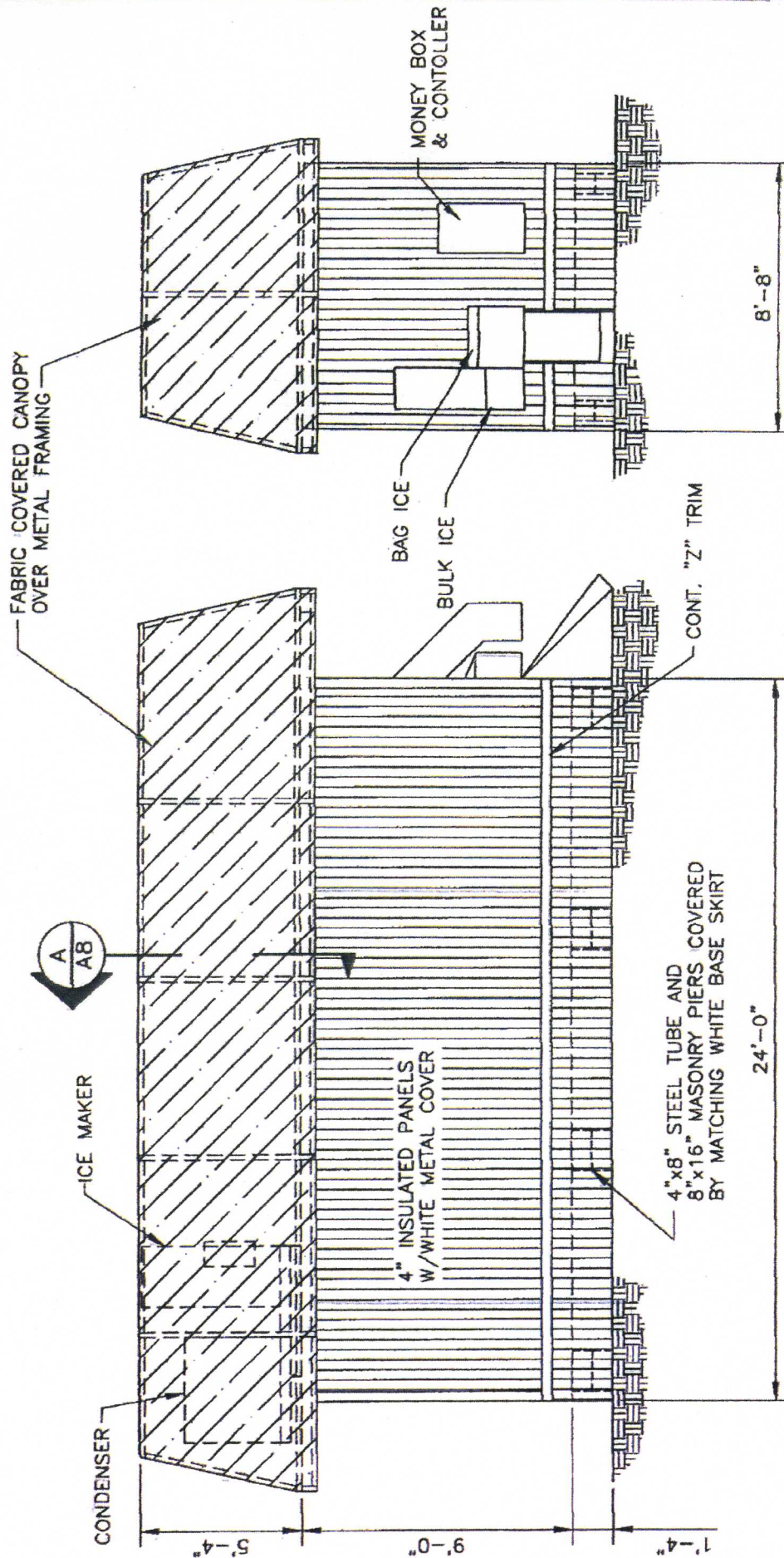
24



16-BAG

20-JULY

\$1.25



FRONT VIEW

SIDE VIEW

- NOTES:**
1. THE AWNING MATERIAL SHALL BE FLAME RESISTANT IN ACCORDANCE WITH NFPA 701 PER FBC 3105.3.1
 2. THE AWNING MATERIAL WILL BE FABRICATED FOR QUICK REMOVAL PRIOR TO THE ARRIVAL OF WINDS IN EXCESS OF 75 MPH PER FBC 3105.4.2.1

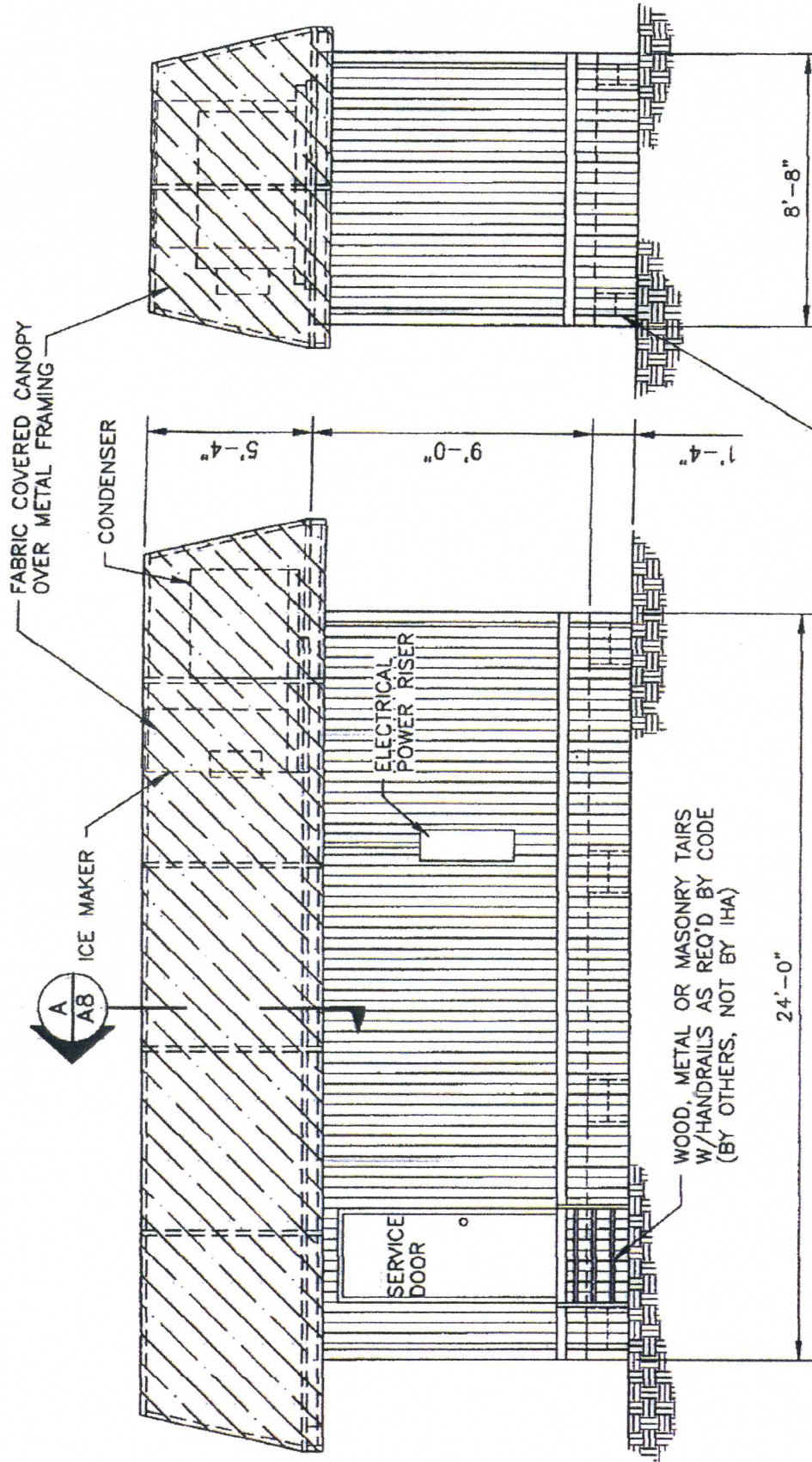
Date: 1-2-07
 SCALE: 3/16" = 1'-0"
 REV:



March Adams & Associates, Inc.
 310 Dodds Ave. - P.O. Box 3689
 Chattanooga, Tennessee 37404
 PH: (423) 698-6675
 Fax: (423) 698-3638

Ice House America
 645 Mayport Road Suite 3A
 Atlantic Beach, Florida 32233
 904-241-7535

BUILDING
 ELEVATIONS
 W/CANOPY



BACK VIEW

SIDE VIEW

- NOTES:**
1. THE AWNING MATERIAL SHALL BE FLAME RESISTANT IN ACCORDANCE WITH NFPA 701 PER FBC 3105.3.1
 2. THE AWNING MATERIAL WILL BE FABRICATED FOR QUICK REMOVAL PRIOR TO THE ARRIVAL OF WINDS IN EXCESS OF 75 MPH PER FBC 3105.4.2.1

Date: 1-2-07
 SCALE: 3/16"=1'-0"
 REV:



March Adams & Associates, Inc.
 310 Dodds Ave. - P.O. Box 3689
 Chattanooga, Tennessee 37404
 PH: (423) 698-6675
 Fax: (423) 698-3638

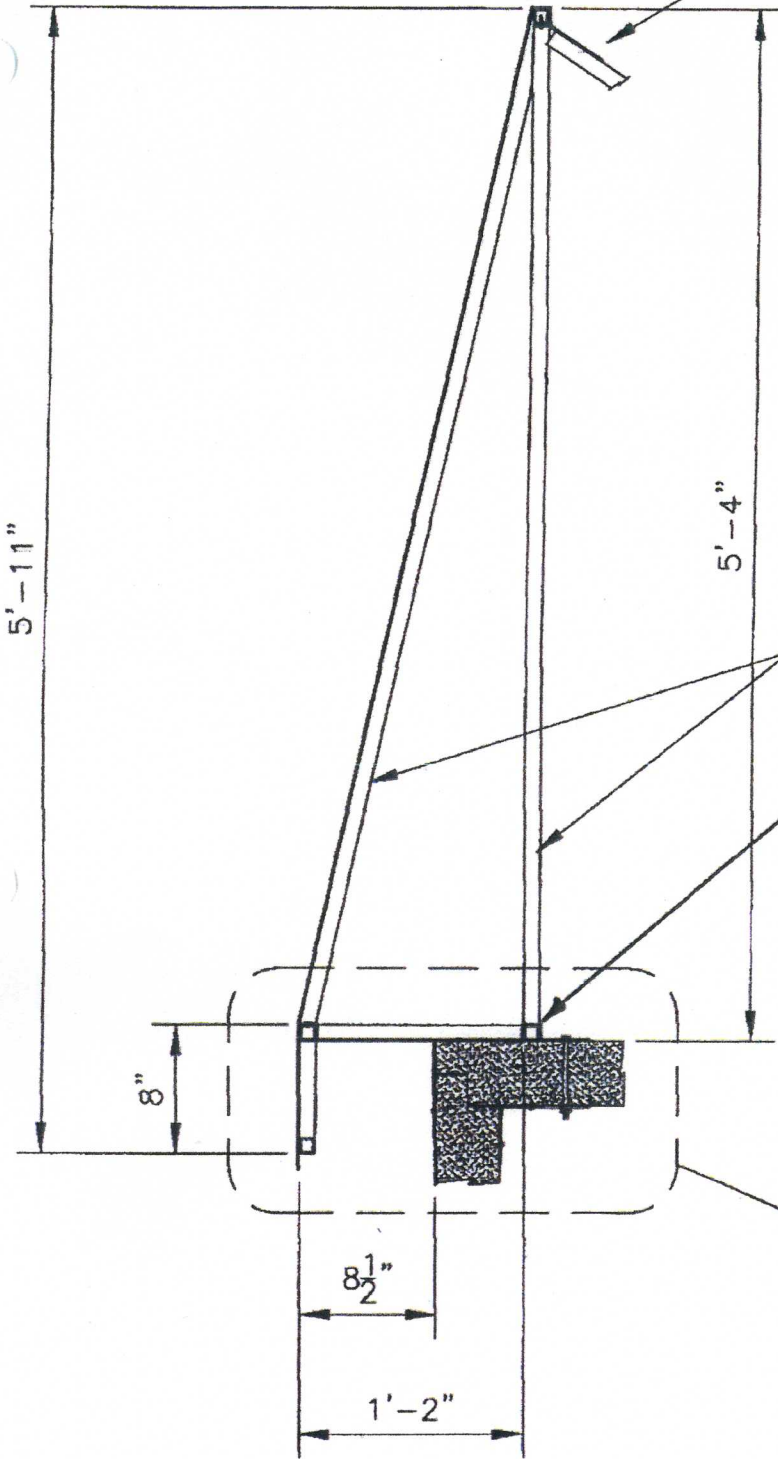
Ice House America
 645 Mayport Road Suite 3A
 Atlantic Beach, Florida 32233
 904-241-7535

BUILDING
 ELEVATIONS
 W/CANOPY

SEE BRACING DETAILS
ON DWGS. A9 & A10 **110112B**

NOTES:

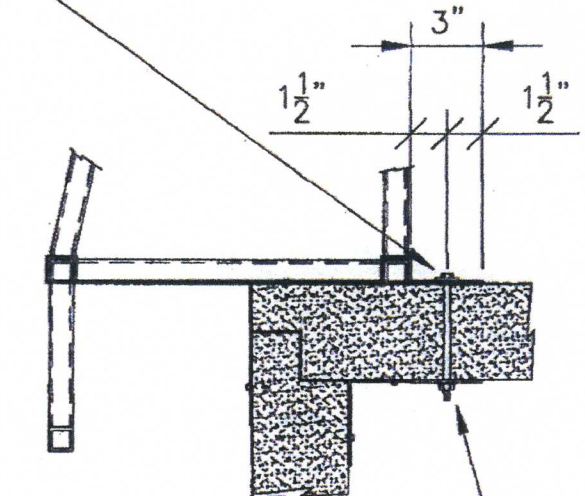
1. CANVAS MATERIAL TO MEET FLAME RETARDANCY OF NFPA 701
2. CANVAS TO BE DESIGNED FOR QUICK REMOVAL IN 75 MPH WIND



STAINLESS STEEL TUBE
1"x1"x18 GA. (TYP. **VON**)

**BOTTOM INTERIOR CHORD
MEMBER TO BE 1"x1"x11 GA**

USE RUBBER WASHER BENEATH
BOLT HEAD AND SILICONE CAULK
AROUND CLIP TO WATERPROOF



$\frac{1}{4}$ " \varnothing SS MACHINE BOLT
W/3"x3" PLATE WASHER
9 CLIPS MIN. REQ'D PER
SIDE (18 TOTAL)
3 CLIPS MIN. REQ'D PER
END (6 TOTAL)

A CANOPY SECTION
A8 SCALE: 1"=1'-0"

Date: 1-11-07
SCALE: 1"=1'-0"
REV:



March Adams & Associates, Inc.
310 Dodds Ave. - P.O. Box 3689
Chattanooga, Tennessee 37404
PH: (423) 898-6675
Fax: (423) 898-3638

Ice House America
645 Mayport Road Suite 3A
Atlantic Beach, Florida 32233
904-241-7535

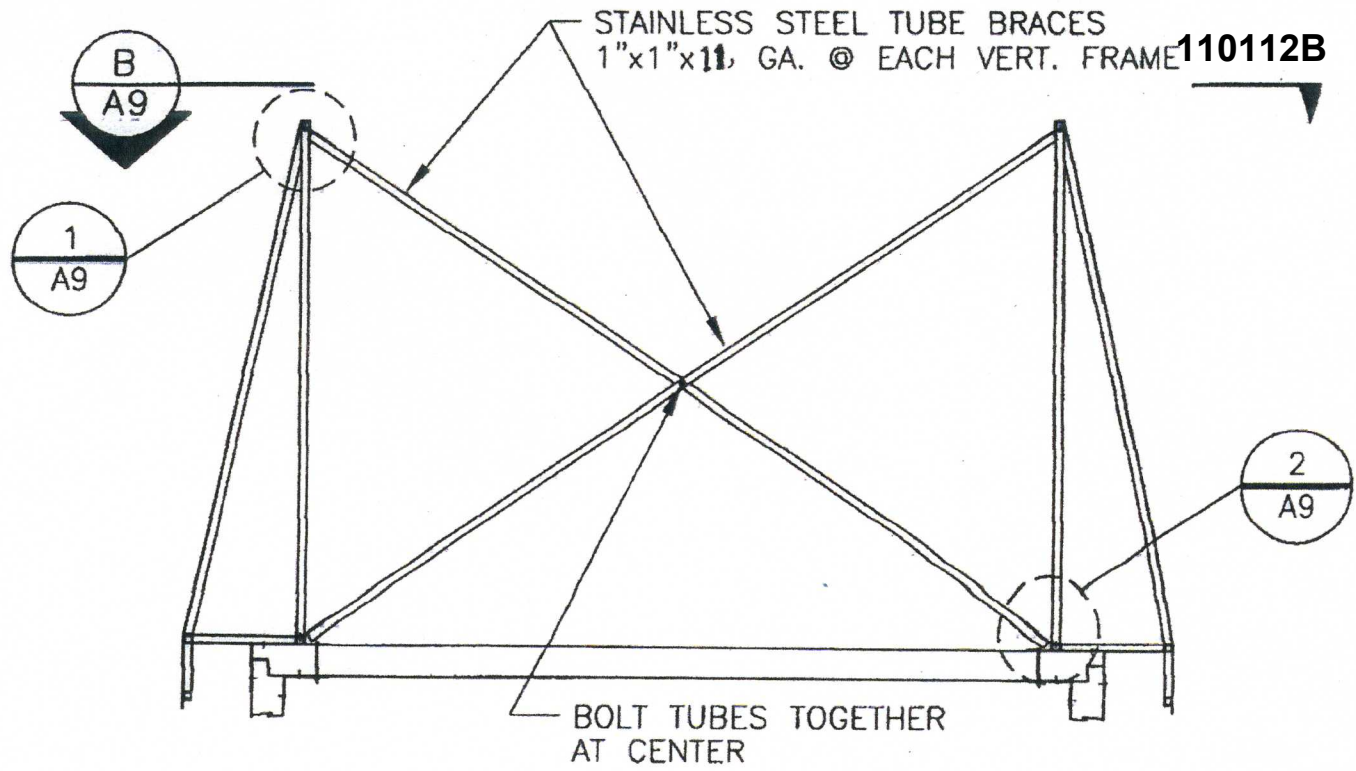
CANOPY
SECTION

A8

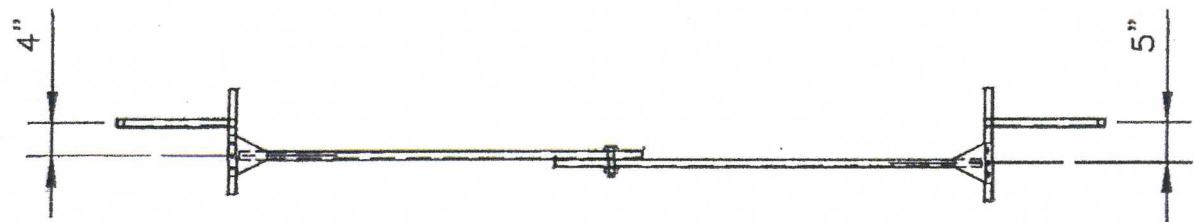
PG OF

110112B

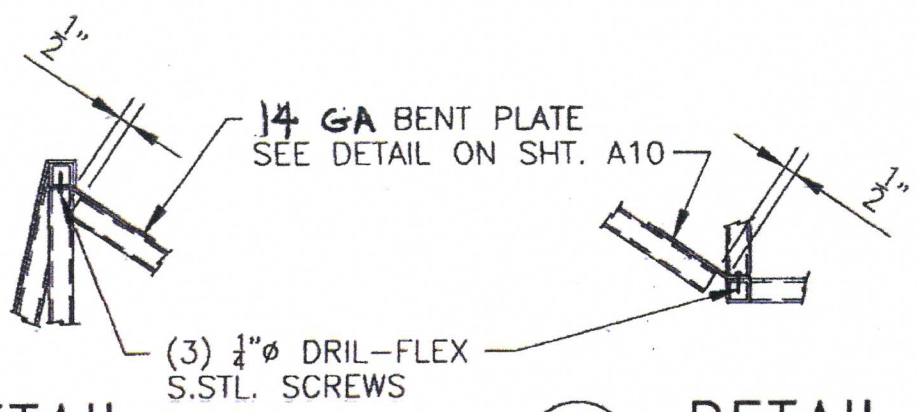
STAINLESS STEEL TUBE BRACES
1"x1"x11 GA. @ EACH VERT. FRAME



A
A9
CANOPY SECTION
SCALE: 1/2"=1'-0"



B
A9
X-BRACING PLAN VIEW
SCALE: 1/2"=1'-0"



1
A9
DETAIL
SCALE: 1 1/2"=1'-0"

2
A9
DETAIL
SCALE: 1 1/2"=1'-0"

Date: 1-11-07
SCALE: 1/2"=1'-0"
REV:

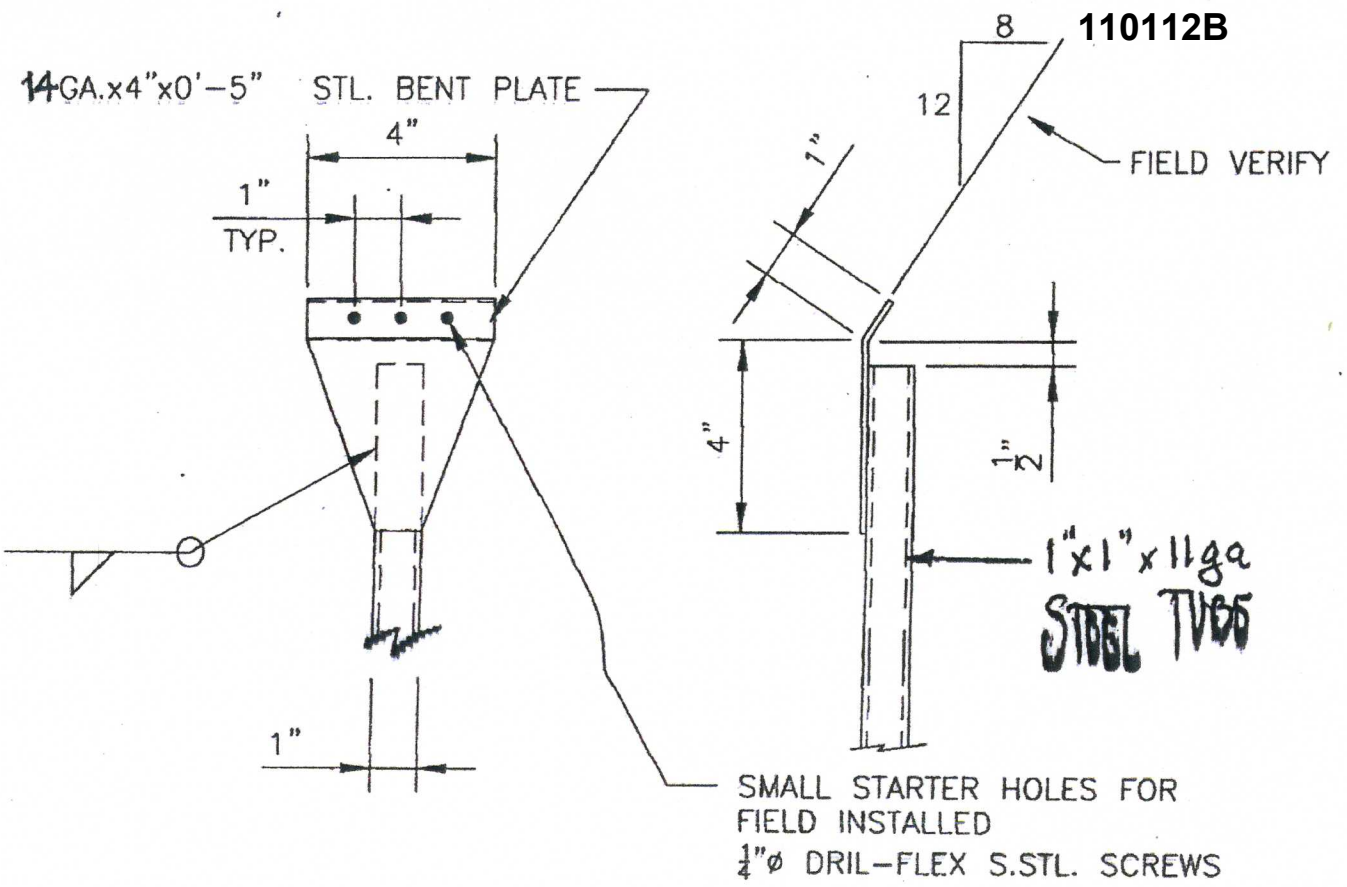


March Adams & Associates, Inc.
310 Dodds Ave. - P.O. Box 3689
Chattanooga, Tennessee 37404
Ph: (423) 698-6675
Fax: (423) 698-3636

Ice House America
645 Mayport Road Suite 3A
Atlantic Beach, Florida 32233
904-241-7535

CANOPY
SECTION

A9
PG OF



BRACKET CONNECTION DETAIL

SCALE: 3"=1'-0"

Date: 1-11-07
 SCALE: 1/2"=1'-0"
 REV:



March Adams & Associates, Inc.
 310 Dodds Ave. - P.O. Box 3889
 Chattanooga, Tennessee 37404
 PH: (423) 698-6675
 Fax: (423) 898-3638

Ice House America
 645 Mayport Road Suite 3A
 Atlantic Beach, Florida 32233
 904-241-7535

CANOPY
 BRACKET
 DETAIL

A10

PG OF

110112B

JUL 15 2005



TWICE THE ICE
www.icehonoramerica.biz

OPEN

EAST COAST ICE
ICE VENDING MACHINES
ICE DELIVERY SERVICE

COOLER BAG

Parrotel!
THE ICE MACHINES
ARE THE ONLY WAY TO
GET THE BEST ICE
AT THE BEST PRICE

ICE
www.icehonoramerica.biz

TOYOTA

110112B

JUL 15 2005



TWICE THE ICE
 www.icehouseamerica.biz
 Perfect Products

OPEN

EAST
 COAST ICE

Paradise
 The Best Ice In The World
 100% RECYCLED POLYETHYLENE
 INSULATION
 100% RECYCLED STEEL
 100% RECYCLED PAINT

BAG

THE
 BEST
 ICE
 16' x 16' x 6'
 20' x 10' x 6'
 10' x 10' x 6'

110112B

1735

TWO THE ICE

ICE HOUSE AMERICA

16^{hrs} BAG
20^{hrs} BULK
\$2.00
24^{hrs.}

COMIC



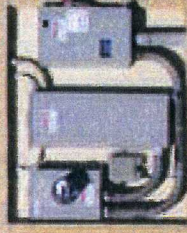


WELCOME HUNTERS
ICE & Water
16LB BAG/20LB BULK - \$2.50

16- BAG
20- BULK
\$2.50



Twice
THE
ICE



50¢
GALLON
\$1.50
3 GALLONS



EXIT

EXIT