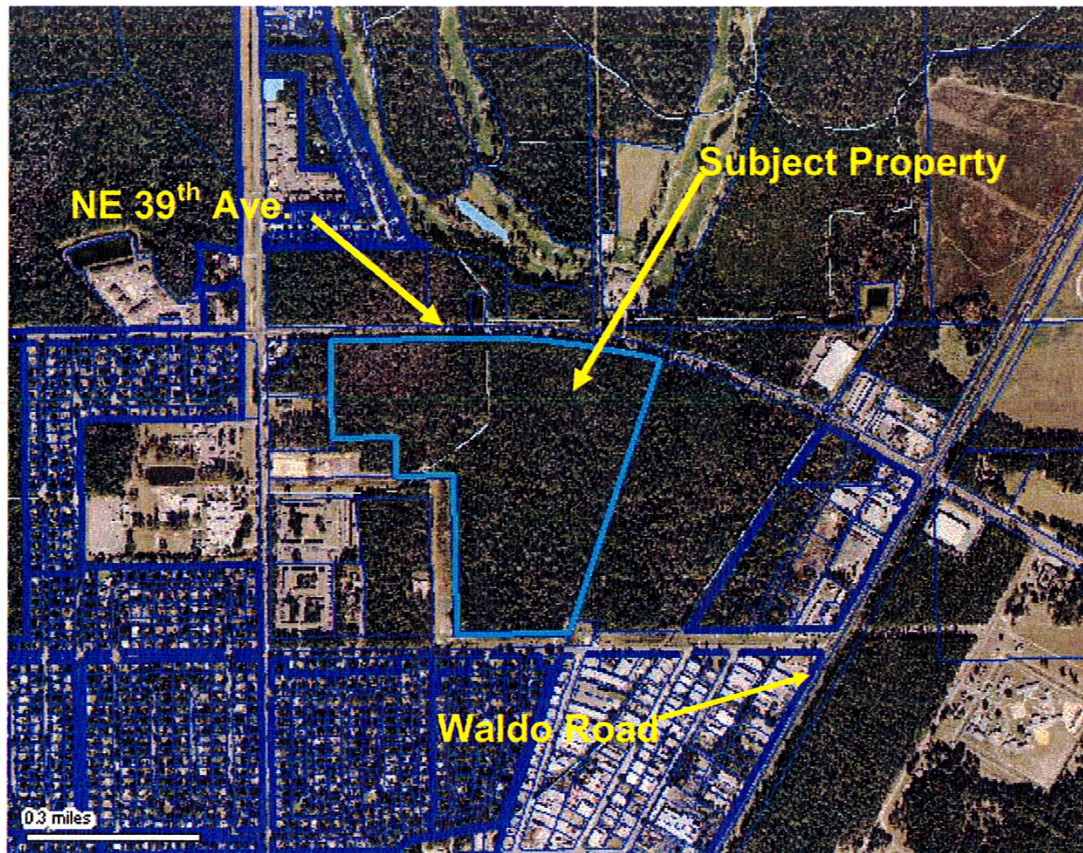


**LEGISLATIVE #**

**110131A**

## Land Parcel For Sale Gainesville, FL



- Location: Near intersection of Waldo Road and NE 39<sup>th</sup> Ave., within city limits of Gainesville
- Parcel Number: 08197-020-003
- Subject Property Size: 87.7 acres (approx.)
- Existing Land Use: Single Family
- Existing Zoning: RSF-1 (Single Family Residential)
- Asking Price: \$995,000

For Information On Property, Please Contact Us at 904-612-6278

**FLORIDA COMMERCIAL**

**REAL ESTATE GROUP**

9822 Tapestry Park Circle, Suite 201  
Jacksonville, Florida 32246

## Property Information

**Utilities:** City water and sewer available to site, contingent on approval of capacity request by the City of Gainesville

**Information Available:**

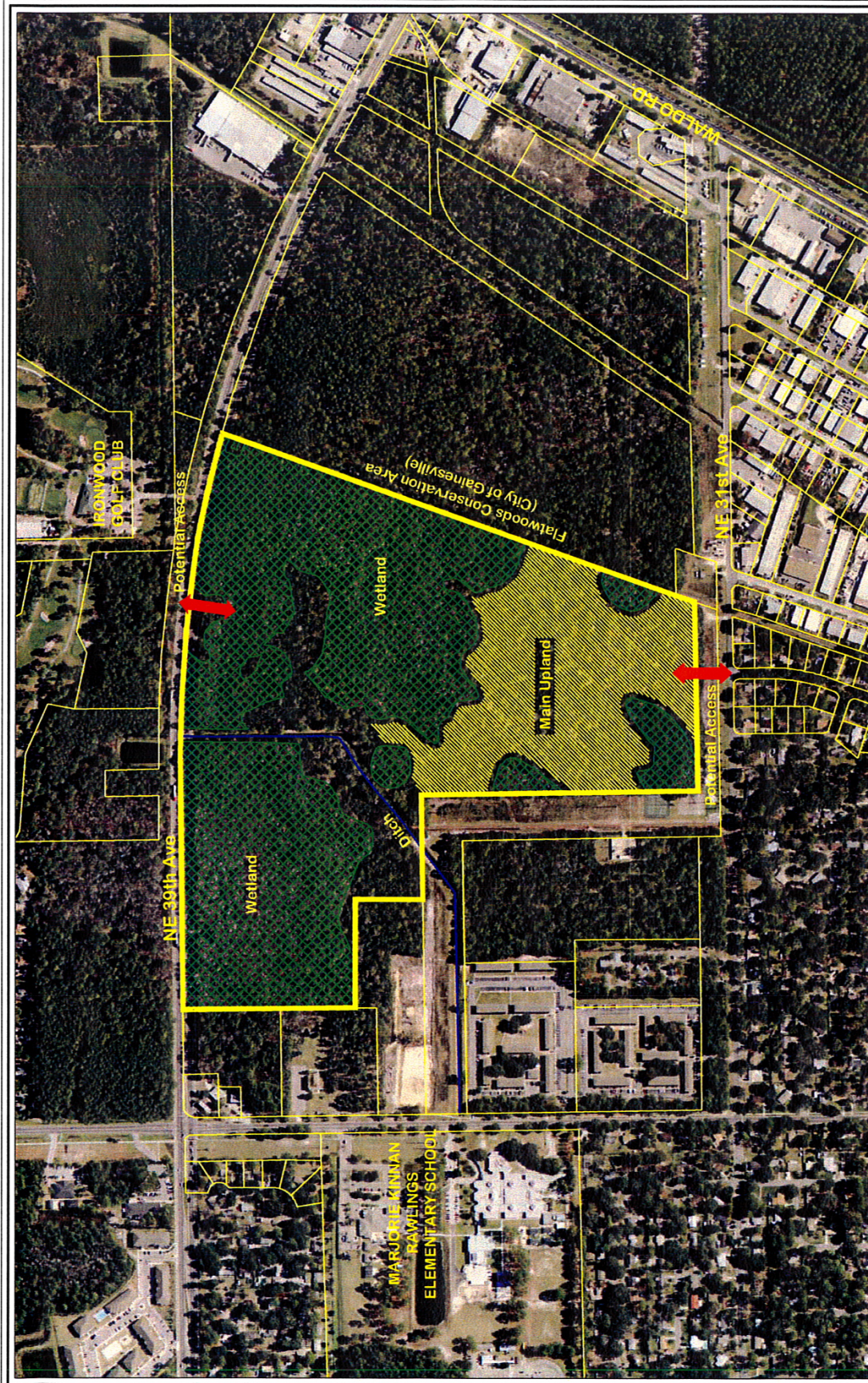
- Preliminary Wetland Assessment performed (has not been reviewed by any regulatory authority). Approximately 33.3 acres are estimated to be upland acres and 54.4 acres estimated to be wetlands

FLORIDA COMMERCIAL

REAL ESTATE GROUP

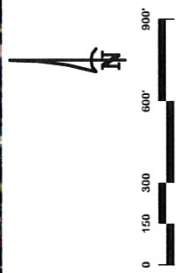
9822 Tapestry Park Circle, Suite 201

Jacksonville, Florida 32246



**FLORIDA TITLE GROUP PROPERTY  
EXISTING SITE**

GAINESVILLE, FLORIDA



8122 Tapscott Park Circle  
Suite 201  
Jacksonville, FL 32246  
Tel: 904.730.3360  
Fax: 904.730.7105  
www.GenesisGroup.com

© Project/Towers Gainesville project

