

**Appendix B Supplemental Documents**

**Exhibit B-1 Existing Zoning Map**

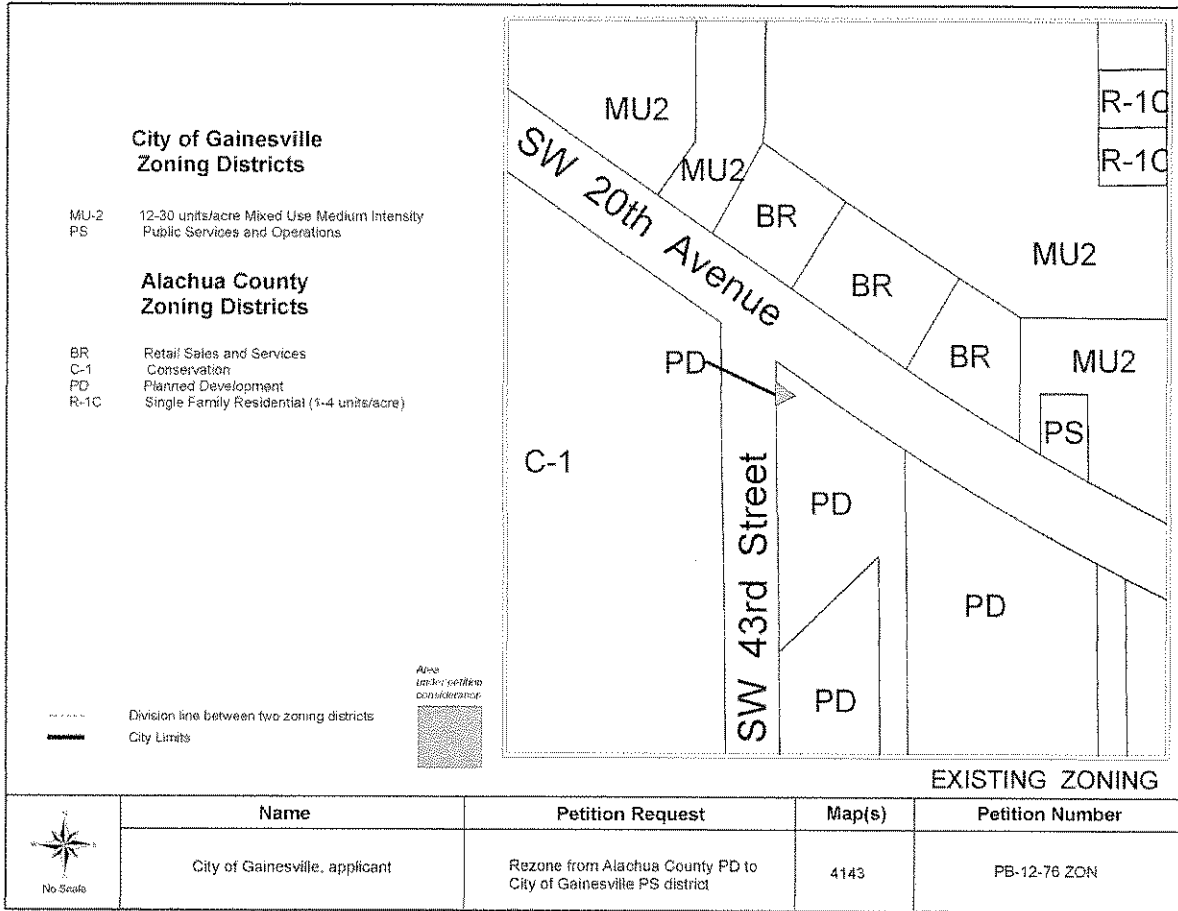
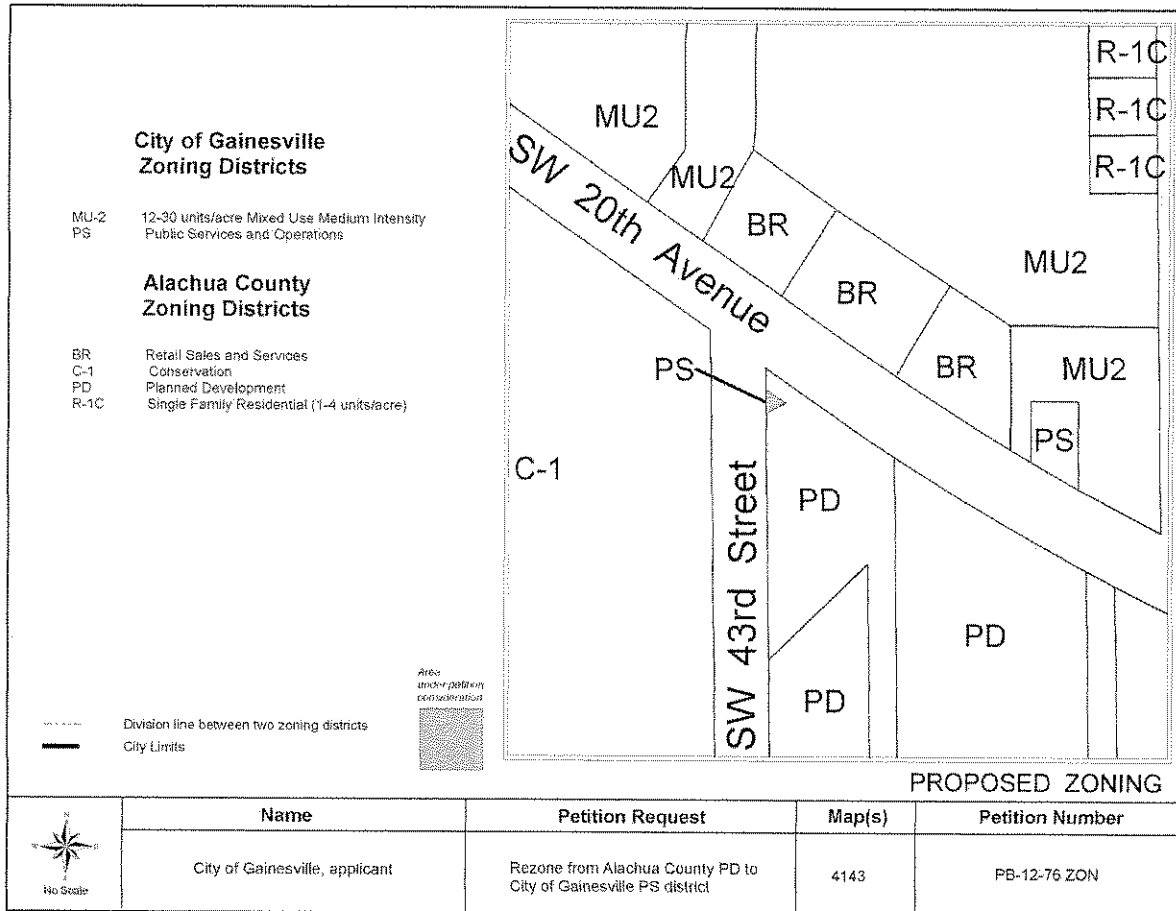
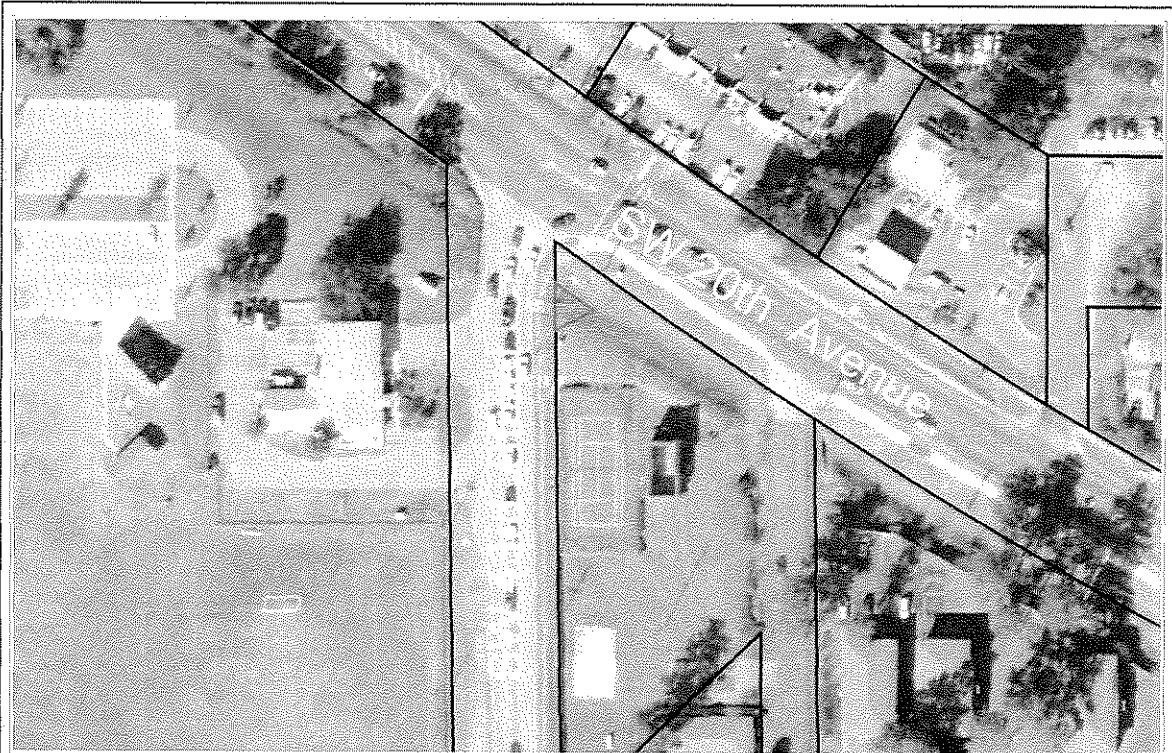


Exhibit B-2 Proposed Zoning Map




Petition PB-12-76 ZON  
 July 26, 2012

Exhibit B-3 Aerial Map



AERIAL PHOTOGRAPH

|   | Name                           | Petition Request   | Map(s) | Petition Number |
|---|--------------------------------|--|--------|-----------------|
| <br>No Scale | City of Gainesville, applicant | Rezone from Alachua County PD to City of Gainesville PS district | 4143   | PB-12-76 ZON    |