

# Girls Place

A Place to Go...

...A Place to GROW



501 (c) (3)

City of Gainesville Community Meeting

December 8, 2015

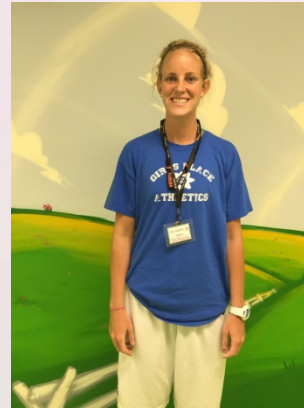
2101 NW 39th Avenue

[www.girlsplace.net](http://www.girlsplace.net)

# Our History

<b>March 1981</b>	The Gainesville Junior Woman's Club began investigating the need and interest for a girls club in the community with surveys and public meetings.
<b>November 1982</b>	A 20 member Operations Board of Directors was created. The Girls Club of Alachua County was issued non-profit status.
<b>January 1985</b>	Rena Clements (our first executive director) was hired.
<b>June 1985</b>	The first Girls Club summer day camp was held at Sidney Lanier School, run by volunteers and was an incredible success.
<b>November 1985</b>	The City of Gainesville granted Girls Club 5.3 acres of land.
<b>April 1986</b>	Construction commenced on the Girls Club clubhouse. Summer Day Camp continued being held at Westwood Middle School.
<b>August 1987</b>	The first after-school program at the Girls Club of Alachua County Clubhouse began.
<b>January 1988</b>	United Way announced the Girls Club as one of their affiliated agents
<b>April 1991</b>	A fifteen member rotating Board of Directors of the Girls Club of Alachua County Foundation was created and officers were elected
<b>November 1991</b>	Girls Club of Alachua County Foundation was issued non-profit status.
<b>September 2008</b>	The Girls Club underwent a name change and officially became Girls Place, Inc.
<b>October 2013</b>	Rena Clements retires as Executive Director after 28 years of service. Janna Magette, PhD. is hired as her successor.
<b>July 2015</b>	Girls Place celebrated its 30th year of hosting Summer Camp for Gainesville Girls.

# Who We Are...



*Janna Magette, Ph.D.*

*Christi Arrington*

*Kaihla Szunko*

*Tara Mercurio*

*Executive Director*

*Program Director*

*Athletic Director*

*Operations Director*

*B.A., Davidson College  
M.S., University of Florida  
Ph.D., University of Florida*

*B.S., University of Florida  
M.S., University of Florida*

*B.S., Central Michigan  
M.S., University of Florida*

*B.S., North Carolina State  
M.S., University of Florida*

# Our Boards

## Operations

Kacey Anderson  
Gia Arvin, Past President  
Mike Barton  
Carmen Braun  
Erica Brown  
Kristen Farrell  
Virginia Griffis, Secretary  
Marynelle Hardee  
Amy Howard, President  
Edwina Hurst  
Sheila Jones  
Natalie King  
Cassie Macias  
Francisco Oquendo  
Matt Pendleton  
Celia Slater  
Kathy Viehe, President-Elect  
Abby Wagner  
Alan West, Treasurer

## Foundation

Kay Ayers  
Sheila Crapo  
Carolyn Daniel  
Michele du Bois  
Leslie Florence  
Evelyn Foxx  
Beverly Gatton  
Frank Graddy  
Marlene Haakonson  
Andrea Hunt  
Linda Ireland  
Liz Jones  
Debby Knopf  
Johnny Mallory  
Beth Mills  
Myra Morgan  
Lynn Read  
Sharon Sperling  
Jim Stewart  
Geraldine Ward

## Honorary & In Memoriam

Dr. Ruth Alexander  
Robert Bryan  
C.B. Daniel, Jr.  
Polly Doughty  
Thelma Fletcher  
Deedee Smith  
Michael Tillman  
Marilyn Tubb  
Robert Wigglesworth

# 2014

## VALUES

At Girls Place we believe that all girls should be encouraged, challenged, and supported to become independent, self-motivated individuals.

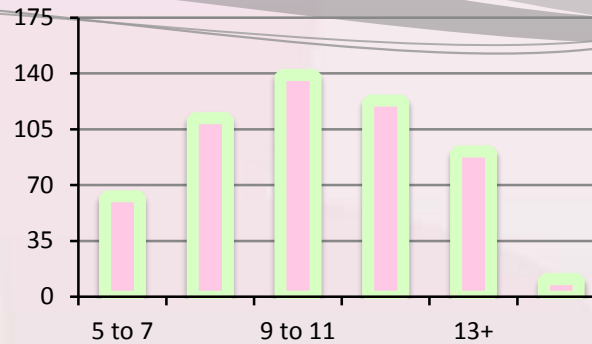
## VISION

Girls Place girls become independent, supportive, kind, caring women who are leaders in their communities.

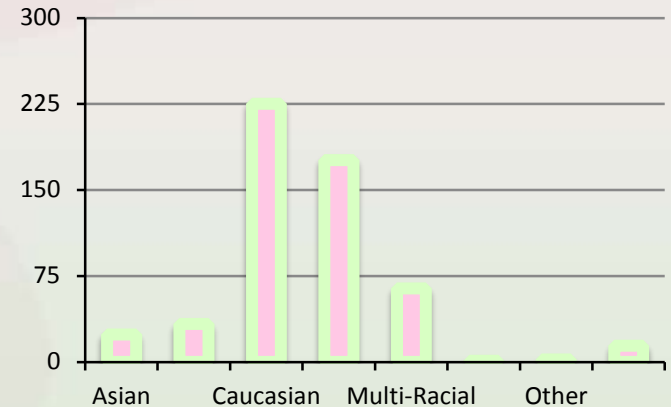
## MISSION

At Girls Place, we empower girls to grow courageous, strong, and self-sufficient. We inspire our girls to celebrate themselves—their minds, their hearts, and their physical well-being.

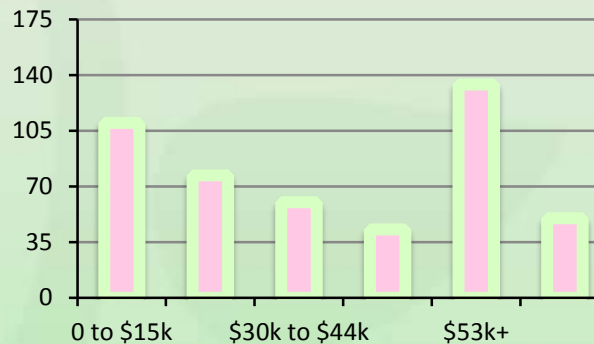
## AGE BREAKDOWN



## ETHNIC BREAKDOWN



## HOUSEHOLD INCOMES



**TOTAL PARTICIPANTS: 539**

# What We Do...

- Achieve: Academic Counseling and Help Increasing Educational Victories Everyday (United Way)
- After School
- Athletics
  - Volleyball: Fall and Spring Leagues
  - Basketball: 3-on-3 Winter League
  - Softball: 12U Team in City of Gainesville League
  - Track: Spring Season with Boys and Girls Club
- BrainPower: Counseling and Wellness Program (CDBG)
- First Place Leadership: Authentic Leadership Academy
- Summer Day Camp





# Girls Place State of the Union

- Partnerships: HOME, Gainesville Health and Fitness, United Way, Kids Cafe, Alachua County Foster Grandparent Program, GREAT, University of Florida (STEAM, Athletics, Dean of Students), Master Gardener Program
- Development
  - 4 Annual Fundraisers
    - Scramble for Kids
    - Hat, Hearts, and Handbags
    - Swamp Chomp
    - Chicken Lunch
- Grants: Kiwanis, CAPP, CDBG
- Donor Program (Launch 2016)





# Our Challenge

- We currently have a wait list for all programs
- After School (15+), Summer Day Camp (30+)
- The size and length of leagues are restricted due to space
- So far, in 2015, there have been over 30,000 people through our facility
- Want to grow without limiting access and opportunities to the girls of Gainesville

# Our Vision

- Convert the infield of the track at the Kiwanis Challenge into a multi-purpose field for Girls Place activities (After School, Summer, and Athletics—60+ interested in soccer/lacrosse)
- Girls Place incurs all costs for the conversion
- City of Gainesville provides maintenance
- Together, Girls Place and City of Gainesville coordinate a schedule benefitting Girls Place and the community
- Build a multi-purpose gymnasium



# The Vision



PROPOSED GIRLS PLACE GYMNASIUM  
conceptual perspective 10-2015





Questions &  
Thank you!

