

Federal Funding Requests

DRAFT

FEDERAL FUNDING REQUESTS PUBLIC WORKS

CONTACT INFORMATION

Name: Teresa Scott

Phone: 334-5070 / 393-8801

Email: scottta@cityofgainesville.org

PROJECT DESCRIPTION

The SW 62nd Blvd is a critical roadway project that will facilitate the movement of people and goods through the Gainesville Metropolitan Area, enhancing access to major employment centers, and alleviating congestion on the Federal Highway System (FHS). The project implements a new corridor with accommodation for multimodal facilities, enhancing safety and connectivity.

In addition, the project will serve as a reliever to the I-75 corridor between the interchanges of SR24/Archer Road and SR26/Newberry Road, reducing local traffic along the interstate, and aligning with federal and state objectives for enhanced capacity and mobility of long-distance freight and passengers resulting in decreased congestion, improved safety, and enhanced economic benefits for the region.

JUSTIFICATION (Subheadings to Use)

1. **Key Objectives** Implementation of a new corridor parallel to I-75.
2. **Key Outcomes** The new corridor will enhance road system connectivity and safety.
3. **Critical Importance** The project will result in reduced congestion along major corridors; improved mobility and access to major activity centers and regional health centers such as Shands Hospital, North Florida Regional Medical Center, and the Veteran's Administration hospital; and, improved safety. The expected decrease in delays may also have a positive environmental benefit associated with reduced fuel consumption and emissions.
4. **Economic Impact** The reduced congestion will result in better access to jobs and economic centers located along SR24/Archer Rd and SR 26/Newberry Rd, including major commercial areas, health care centers, and the University of Florida.
5. **Partnerships** The project was developed as a regional collaboration between the City of Gainesville and Alachua County, and also including strong collaboration with the private sector. A significant portion of the project has been implemented by Butler Enterprises in association with a major land development project in the area. Interest in the project spans through the region, with neighboring Marion County/Ocala MPO supporting the project as a regional priority for funding under the Transportation of Regional Impact Project (TRIP) funding opportunity.
6. **Project Justification** The project is a regional transportation priority identified in the Metropolitan Transportation Planning Organization 2040 Long Range Transportation Plan. It aligns with federal and state priorities to improve mobility and safety of the transportation system while enhancing economic opportunities for the area. The project

also serves as a reliever to the I-75 corridor which is a state priority for enhanced safety and congestion mitigation.

7. **Historical Information** The project has strong local and state support from a diverse stakeholder base. Significant work has been accomplished to date to advance the project through the NEPA process; and design is underway. There are options to fund the project in phases, implementing the crucial component that closes the transportation system gap at a lower cost as a two-lane connector.

FINANCIAL

1. **Overall** This funding request is for a portion of the corridor, implementing a new section that closes a critical gap in the system.
2. **Level of Federal Funding Requested** \$17 million
3. **Other Support, Matching Funds, Contributions** A significant portion of the project, \$13.8 million, has been funded through a partnership with the private sector. The City has amassed a total of \$1.2 million in other local funds; the MTPO has allocated \$9 million for the project in the 2040 LTRP Cost Feasible Plan.
4. **Historical Information** There has been a significant amount of information provided regarding this project over the years. Letter of support from local and state stakeholders are on file and can be provided as needed. The project is advancing through design and should be shovel ready for construction by 2020.

ATTACHMENTS

1. Promotional
2. Media coverage
3. Pamphlets

SWEETWATER BRANCH CREEK IMPROVMENTS FEDERAL FUNDING REQUEST

CONTACT INFORMATION

Name: Suzanne Wynn, Project Manager

Phone: 352.393.8208, 352.672.5019

Email: wynns@cityofgainesville.org

PROJECT DESCRIPTION

The Sweetwater Branch Creek corridor is a critical pedestrian and bicyclist corridor through the heart of Downtown Gainesville, Florida. It connects the Downtown Gainesville business district, large residential neighborhoods, and Main Headquarters Library with the Power District Redevelopment Area project (an up & coming 13-acre thriving revitalized neighborhood and economic hub) and the newly opened 32-acre Depot Park.

The Sweetwater Branch Creek is a typical urban stream that “flashes” with flooding & high velocities causing heavy erosion along the corridor from E. University Avenue to SE 4th Avenue. The Sweetwater Branch Creek flood zone in the Power District Redevelopment Area limits the economic growth potential in this central critical urban redevelopment area. The project implements urban stream flood & erosion infrastructure improvement and water quality improvements, coupled with primary downtown urban stream corridor pedestrian & bike usability upgrades.

JUSTIFICATION

1. Key Objectives

The project will reduce/eliminate flooding, eliminate erosion and high velocities, improve water quality, and remove Power District redevelopment land from 100-year floodplain, while creating a safe and accessible pedestrian & bike corridor between vital Downtown Areas and the Power District Redevelopment Area & Depot Park. Increased safety, pedestrian & bike usability, and beautification enhancements for an improved public park corridor between major existing & future economic hubs, neighborhoods, and Depot Park will also be incorporated in the design and construction.

2. Key Outcomes

The project will increase the land available for redevelopment in the core of the City Of Gainesville downtown by removing land from the 100-year floodplain. The project will improve water quality while increasing safety, pedestrian & bike usability, and beautification enhancements for an improved public park corridor between major existing & future economic hubs, neighborhoods, and Depot Park

3. Critical Importance

Critical importance impacts are numerous. They are as follows: increased floodplain storage, improved water quality, improved ecological value of a major environmental asset within the City Of Gainesville city limits, increased public access to recreation and parks, increased urban waterways, et.al. public education opportunities, increased aesthetic & quality of life value, increased opportunity to redevelop critical land in the heart of downtown, and increased property values.

4. Economic Impact

Potential economic impacts were estimated in the “*Gainesville Community Redevelopment Agency’s Sweetwater Branch Daylighting Feasibility Analysis, October 2015*”. The economic loss within the downtown Power District Redevelopment area is estimated at \$461 per square foot per year of area that remains in floodplain. The economic losses within the Power District Redevelopment Area attributed to the floodplain are estimated to be \$17+ million per year.

5. Partnerships

There is an excellent partnering potential between Federal, State, and Local City of Gainesville governments. The City of Gainesville would provide the overall project management services, in addition to design and construction cost-sharing.

6. Project Justification

This project could be a national model for redeveloping and revitalizing the urban core while restoring historical environmental and quality of life value. National/federal missions or policies that may apply are National Pollutant Discharge Elimination System (NPDES), Economic Development or Redevelopment initiatives, Urban Park/Forest Development, Pedestrian & Bike Corridor Safety and/or Usability Enhancement programs.

7. Historical Information

The Sweetwater Branch Creek watershed encompasses 3.3 square miles of central Gainesville. Sweetwater Branch flows through the Duck Pond area and the heart of downtown Gainesville, then through the Depot Avenue residential/industrial district (now called the “*Power District Redevelopment Area*”) and Depot Park. The Sweetwater Branch Creek continues to flow southeast through residential and natural areas before reaching its final destination of Payne’s Prairie State Preserve where it ultimately discharges to the Floridian aquifer via the Alachua Sink.

Historically, Sweetwater Branch was a small spring-fed stream that meandered through a young Gainesville. As the city grew, so did the need to prevent flooding, hence many segments of the creek were channelized. Today, an estimated 60% of the area in the watershed is impervious as the creek flows through highly developed residential and commercial areas in the upper and central parts of the basin. Only a small portion of the watershed, the area south of the Depot Park and the portion of the creek that flows through Payne’s Prairie, remains undeveloped. There is a vision to eventually connect the City Of Gainesville’s downtown area with a park corridor all the way to the Payne’s Prairie State Preserve.

FINANCIAL

1. **Overall:** \$3.1 million
2. **Level of Federal Funding Requested** 50%
3. **Other Support, Matching Funds, Contributions** (I am unsure how to represent the potential State of Florida contributions not allocated as of yet)
4. **Historical Information** City of Gainesville Community Redevelopment Agency’s economic drivers’ available balance in June 2016 was \$2.6M for all 11 of our Downtown Redevelopment Area Community Initiatives. The Power District Redevelopment project is one of these 11 economic driver community initiatives. The Power District Redevelopment project is approximately 13 acres of abandoned utility facilities and industrial space in the heart of the City of Gainesville. There are multiple projects within the 13+ acres of the Power District Redevelopment area of which the Sweetwater Branch Creek Improvements is one. The Power District projected total budget for fiscal years 2017 & 2018 is \$1.9M.

ATTACHMENTS

1. **Promotional** – See attached “*Sweetwater Branch Creek Improvements Promotional Flyer*”
2. **Downtown Redevelopment Area Map** – See attached “*Downtown Redevelopment Area*”

Sweetwater Branch Creek Improvements City of Gainesville, Florida

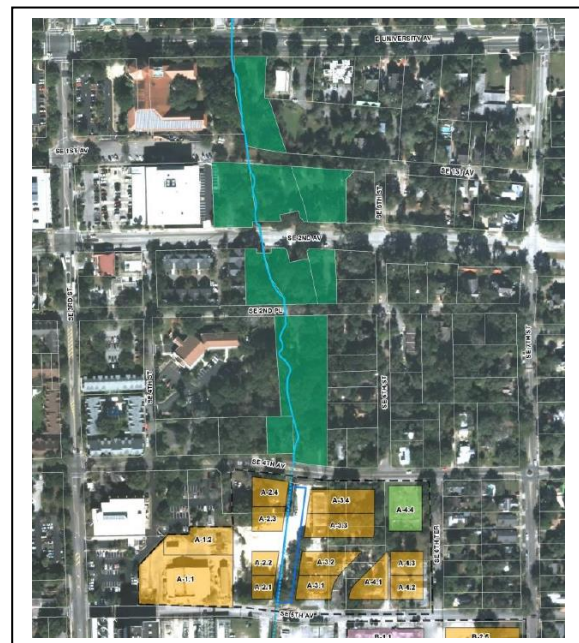


ABOUT: The Sweetwater Branch Creek corridor is a critical pedestrian and bicyclist corridor through the heart of Downtown Gainesville, Florida. It connects the Downtown Gainesville business district, large residential neighborhoods, and Main Headquarters Library with the Power District Redevelopment Area project (an up & coming 13-acre thriving revitalized neighborhood and economic hub) and the newly opened 32-acre Depot Park. The Sweetwater Branch Creek is a typical urban stream that “flashes” with flooding & high velocities causing heavy erosion along the corridor from E. University Avenue to SE 4th Avenue. Its flood zone in the Power District Redevelopment Area limits the economic growth potential in this central critical urban redevelopment area. **The project implements urban stream flood & erosion infrastructure improvements coupled with primary downtown urban stream corridor usability upgrades.**

IMPACTS: The project will reduce/eliminate flooding, eliminate erosion and high velocities, improve water quality, and remove Power District redevelopment land from 100-year floodplain, while creating a safe and accessible pedestrian & bike corridor between vital Downtown Areas and the Power District Redevelopment Area & Depot Park. Increased safety, pedestrian & bike usability, and beautification enhancements for an improved public park corridor between major existing & future economic hubs, neighborhoods, and Depot Park will also be incorporated in the design and construction.

FUNDING NEEDS: \$3.1 million. The project can be implemented in the following phases: Sweetwater Branch Creek “Daylighting” project within the Power District Redevelopment Area design and construction (\$1.9 M) and upstream corridor enhancements design and construction (\$1.2M).

CURRENT STATUS: The hydraulics & hydrology Sweetwater Branch Creek basin study and modeling effort is underway. This will provide the foundation for design of the key components of the fundamental improvements, the Daylighting of the Sweetwater Branch Creek within the Power District Redevelopment area and the stabilization of the Sweetwater Branch Creek between E. University Ave. and SE 4th Avenue. This effort will be completed and available in the beginning of October 2016.



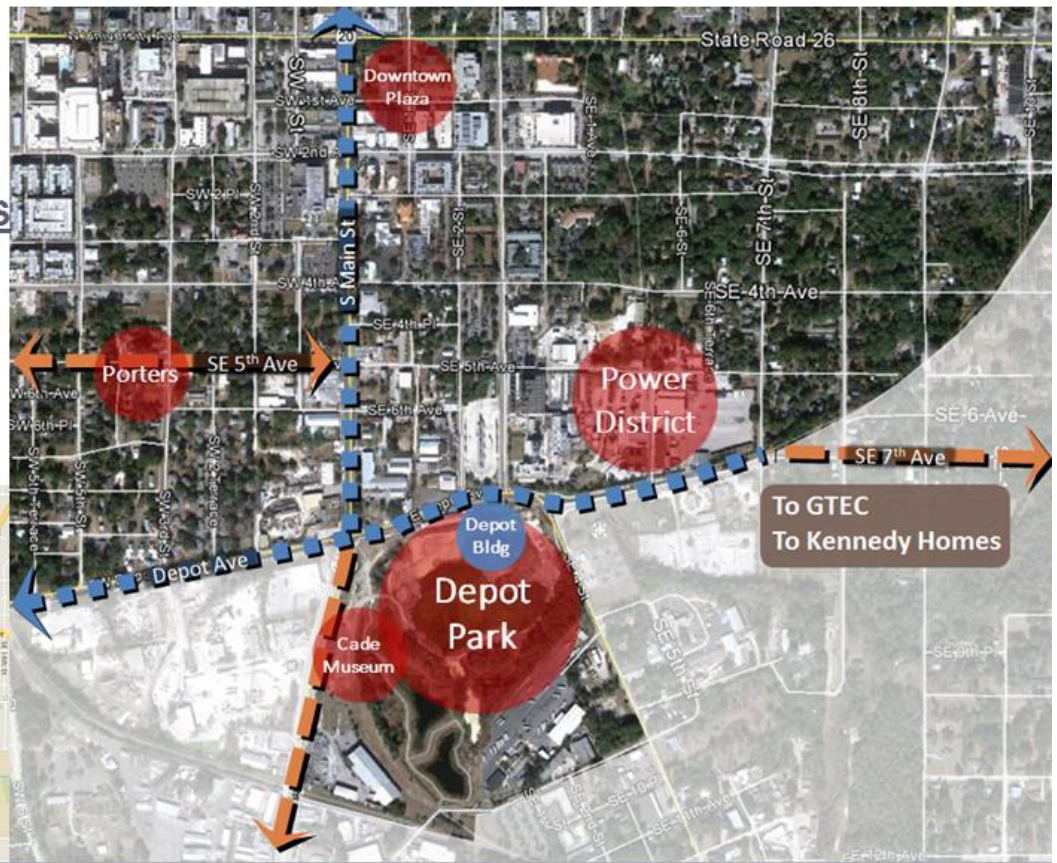
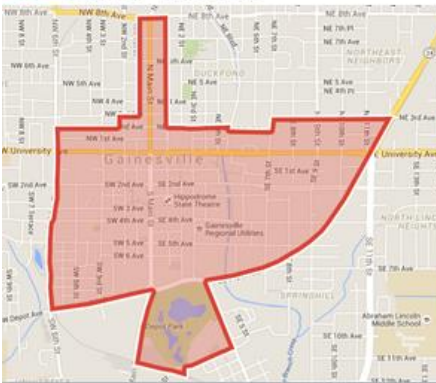
DOWNTOWN REDEVELOPMENT AREA

OVERVIEW

- Established 1981
- Expanded 2001
- Size : 490 Acres
- FY16 Budget: \$1.9M

COMMUNITY INITIATIVES

- Bo Diddley Plaza
- Depot Park
- Porters Neighborhood Improvements
- Power District



RTS FEDERAL FUNDING REQUESTS

CONTACT INFORMATION

Name: Jesus Gomez, Transit Director

Phone: 352-393-7860

Email: gomezjm@cityofgainesville.org

PROJECT DESCRIPTION

RTS Bus and Bus Facilities: Purchase of CNG buses and facilities or purchase of replacement buses.

JUSTIFICATION (Subheadings to Use)

1. Key Objectives

To reduce bus fleet energy consumption, this in turn will help improve fuel economy, reduction of greenhouse gas emissions and lower maintenance costs.

2. Key Outcomes

New buses would reduce RTS' annual operating costs by over \$13,000 per bus and over a 30-year period result in a savings of almost \$40 million.

3. Critical Importance

Our aging fleet is due to RTS doubling fleet size since 1997 to address the huge ridership increases. Currently Federal Transit Administration (FTA) grants have helped to reduce the fleet age to approximately 10.8 years but almost half the fleet exceeds their useful life in years or mileage per FTA standards. Based on current funding levels RTS's average fleet age will be over 17 years by 2045. RTS needs to replace 50 buses to sustain regular service and reduce maintenance costs. RTS not only needs to improve the current fleet age but also keep pace with the pressure to grow the system.

4. Economic Impact

Economic impact includes reduction of RTS' annual operating costs by over \$13,000 per bus and over a 30-year period result in a savings of almost \$40 million. These savings could be used to address the over \$60 million capital bus funding deficit RTS is expecting over the same period.

5. **Partnerships** governmental, public, private, their roles, contributions, commitments
RTS plays a key role in building successful partnerships within the community such as University of Florida (UF), Santa Fe College (SF), Alachua County, and Chamber of Commerce.

6. Project Justification

This project is consistent with Federal Transit Administration (FTA) goals of keeping transit assets in state of good repair and to address RTS needs that based on current funding levels RTS's average fleet age will be over 17 years by 2045. RTS needs to replace 50 buses to sustain regular service and reduce maintenance costs.

7. Historical Information

Our aging fleet is due to RTS doubling fleet size since 1997 to address the huge ridership increases. Currently Federal Transit Administration (FTA) grants have helped to reduce the fleet

age to approximately 10.8 years but almost half the fleet exceeds their useful life in years or mileage per FTA standards. .

FINANCIAL

1. Overall cost of the project

- Compressed Natural Gas (CNG) facility upgrade and buses - RTS requests \$30,000,000. The request will ensure that RTS has proper infrastructure in place, be able to replace the fleet that passed its useful life, and have a cost-effective transition to CNG.
- Diesel Buses - RTS requests \$7,600,000 to replace 16 older diesel engine buses with new ones in case funds are not enough to upgrade the facility to maintain CNG buses, and acquire CNG buses.

2. Level of Federal Funding Requested by City, federal-to-city or other ratio
80% Federal, 20% Local

3. Other Support, Matching Funds, Contributions from other resources
Potential other local funds through new development transportation impact fees

4. Historical Information that supports the request about support from others
RTS fleet replacement and expansion strategy is detailed in the goals, objectives and priorities of the Transportation Improvement Program (TIP), Transit Development Plan (TDP), the Gainesville Metropolitan Transportation Planning Organization's Long Range Transportation Plan, Alachua County's Mobility Plan, and the City of Gainesville's Comprehensive Plan.

ATTACHMENTS

1. Promotional
2. Media coverage
3. Pamphlets

FEDERAL FUNDING REQUESTS (1 to 2 page Maximum)

CONTACT INFORMATION

Name: Lt. Joseph Raulerson

Phone: (352) 393-7530

Email: raulersoqh@cityofgainesville.org

Body Camera Program

According to a Mesa (Arizona) pilot program, officers received 40% fewer complaints with cameras and had 75% fewer use of force complaints with cameras. An effort by the Gainesville Police Department's effort to be transparent to the community and more efficient the department will utilize body worn cameras. The cameras will also illicit community trust and improve outcomes in use of force and citizen complaints. This effort will mirror the President's Task Force on 21st Century Policing executive summary under pillar three. The Gainesville Police Department continues to be an innovator and leader in community policing. On October 6, 2016, Attorney General Loretta Lynch awarded an inaugural award for innovations in community policing to Sergeant Audrey Mazzuca. "Through Sgt. Mazzuca's leadership, the kids developed trusting relationships with law enforcement resulting in a 79 percent decline in on-campus arrests in 2015.

Objectives

The Gainesville Police Department makes 32,000 contacts annually through field contacts and traffic stops.

The Gainesville Police Department (GPD) has funding through the Department of Justice to increase levels of community oriented policing and has been granted assistance for community dialogues in the community to increase trust and establish long term community GPD is also looking for ways to help reduce false complaints against officers and protect citizens.

Key Outcomes

Gainesville Police Department is working in Community Policing where it protects both citizens and officer in the event of reducing false claims and increase community trust.

Level of Federal Funding Requested

In order to implement our body camera program, we are requesting federal assistance in the amount of \$629,000.

Historical Information

Gainesville Police Department was awarded the Attorney General's Community Policing Award for the HEROES Program.

FEDERAL FUNDING REQUESTS (1 to 2 page Maximum)

CONTACT INFORMATION

Name: John Alexander

Phone: (352) 575-8588

Email: alexanderjw@cityofgainesville.org

Brave Overt Leaders of Distinction (BOLD)

Brave Overt Leaders of Distinction (BOLD) is a re-entry program for males between the ages of 18-24.

Objectives

Brave Overt Leaders of Distinction (BOLD) is a re-entry program for males between the ages of 18-24.

Key Outcomes

The program works in collaboration with multiple community partners to allow young men with criminal records or adverse backgrounds, the opportunity to achieve goals and receive services to become law abiding, tax paying citizens in the community.

Critical Importance:

The Gainesville Police Department provides municipal policing services to a population of 124,354 located in Gainesville, FL. Years ago, the Gainesville Police Department realized that they must be more proactive in working with the youth who are the greatest of need and who have demonstrated patterns of delinquency. The 2012 Alachua County School Juvenile arrest data indicates that 34.7% of District students are African American; whites make up 46.6%, Hispanics make up 7%, multiracial 6.8%, and Asian 4.7%. When you examine those who are charged with crimes, whites make 32% and blacks were charged in 70.7%.

Level of Federal Funding Requested

\$200,000 to provide assistance in vocational training, job opportunities and placement.

FEDERAL FUNDING REQUESTS (1 to 2 page Maximum)

CONTACT INFORMATION

Name: Lt Joseph Raulerson

Phone: (352) 393-7530

Email: raulersoqh@cityofgainesville.org

Domestic Violence

The majority of domestic violence cases in this community are committed by men. A new grassroots effort championed by Gainesville Police Department's (GPD) Rebuilding Coordinator targets men involved in speaking out against intimate partner violence.

Objectives

- A community Rally was held December 7 utilizing social media as a vehicle for advertising the event.
- GPD Domestic Violence detectives and other agencies have formed a High Risk Team response to Domestic Violence. The purpose of this team is to identify the most dangerous cases of domestic violence and implement interventions to prevent cases from escalating to lethal levels. The team strives to interrupt this pattern of escalation by focusing equally on victim safety and offender accountability utilizing a three-pronged approach: Early identification of high risk offenders through risk assessment; an individualized multidisciplinary response to high risk cases; and coordinated monitoring and containment of offenders.
- GPD is also examining ways to address victims of sexual assault.

Key Outcomes

- Alachua County Office of Victim Services Rape Crisis Center to launch a website for anonymous reports of sexual assault. The site provides information about intimate partner violence, victim rights and free resources available in the community. The University of Florida will work with GPD to develop videos aimed at sexual assault prevention that will aired as public service announcements.

The Gainesville Police Department (GPD) has received continuously funding through OVW's Grants to Encourage Arrest Policies and Enforcement of protection Orders Program since 2007 and has developed several innovative programs that assist victims of domestic violence and their families that have been recognized nationally.

Critical Importance:

With the continued assistance of the Office on Violence Against Women the Gainesville Police Department will continue to expand these outreach efforts to address the effects of domestic and intimate partner violence in our community and increase awareness about prevention and support.

Level of Federal Funding Requested

In order to complete our domestic violence videos for public service announcements, we are requesting federal assistance in the amount of \$50,000.

FEDERAL FUNDING REQUESTS (1 to 2 page Maximum)

CONTACT INFORMATION

Name: Lt Joseph Raulerson

Phone: (352) 393-7530

Email: raulersoeh@cityofgainesville.org

Mental Health and Public Education for Violence Prevention

The Gainesville Police Department is coordinating efforts between Meridian Behavioral Health Services, CDS Family and Behavioral Health Services, Inc., Alachua County Schools, the Court System (Eighth Judicial Circuit, FL) and Juvenile Justice Providers to develop a system of care (SOC) for youth.

Objectives

The overall objective of the SOC will be to assess behavioral issues and collaboratively intervene with the student and family before these issues become arrestable offenses.

Key Outcomes

Support services will include referrals for individual and family counseling, psychiatric referral, diversion to community conferencing, teen court, and restorative justice programs, mentoring, testing, and assessment.

Critical Importance:

The youth requiring these services are overwhelmingly youth of color. This fact has led to a disproportionate number of youth of color entering the juvenile justice system in our judicial circuit.

Level of Federal Funding Requested

Funding in the amount of \$50,000 is requested to support the development of the SOC to provide training to faculty, counselors and law enforcement officers for the purpose of improving communication with youth and families in crisis and more fully understanding the ramifications of dealing with children with special needs (autism, ADHD, substance abuse, intellectual and psychiatric deficiencies).

FEDERAL FUNDING REQUESTS (1 to 2 page Maximum)

CONTACT INFORMATION

Name: John Alexander

Phone: (352) 575-8588

Email: alexanderjw@cityofgainesville.org

Reichert House Youth Program

The Reichert House Youth Academy was established in 1987, as a result of a growing number of at risk young black males between the ages of 12 through 18 (4th to 12 grade), predominately from lower income, single family households creating crime problems and other socially unacceptable behaviors within Gainesville communities. Candidates are referred by the courts, States Attorney's Office, police officers, schools, public housing officials, Department of Juvenile Justice, and parents.

Objectives

Construction- Targeted Training Solutions and the National Center for Construction Education and Research (NCCER) will provide certificate training. The training helps build transferrable credentials in the construction industry for employment.

Business-The Business Academy is designed to teach students basic principles of the business world. Instructional sessions will include training on Microsoft Word, Excel, PowerPoint, and typing. Students will also become familiar with the various forms of technical documents, including resumes and cover letters.

Culinary-Students will have the opportunity to explore culinary through various ways, including nutritional knowledge for health advantages. Participants will also learn sanitation modules for cooking areas. The training will lead to a Safe Serve Certification, qualifying students to work at specific restaurants.

Key Outcomes

Reichert House graduates have achieved success in both their personal life and post academic endeavors as well as achieving their occupational goals. Graduates have been successful in the college, military, law enforcement, Fire Department, law school and medical school. The 2011, 2012 graduation rates for seniors was 100%.

Critical Importance:

The program has grown from very humble beginnings to encompass a permanent educational complex including a main building containing classrooms, library, fully supported computer room, administration offices, board room, complete kitchen and multi-purpose room. A high school wing has been added containing classrooms and administrative offices as well as a fully

supported computer lab. A functioning music/video production studio is available for participants to become involved in the many processes and jobs available in media operations. Staffed with an executive director, assistant director, operations manager, 5 intervention officers, police officer, 3 state certified teachers, and an academic coordinator Reichert's Vision has continued to support and grow the facilities to meet the needs of at risk young men throughout the Gainesville and surrounding communities

Level of Federal Funding Requested

The federal request for this project is estimated at \$500,000 to continue expansion services to the STEM Lab and apprentice programs.

Other Support, Matching Funds, Contributions

Our current funding sources are both public and private. Because of our success and growth, we are in the process of building on donated land (\$55,000) the new modular elementary wing (\$150,000) to include a fully supported STEM lab (\$50,000).

Historical Information

The academic programs are primarily funded by a grant obtained through a relationship with the Alachua County School Board. Employees and operations are funded by the City of Gainesville, Black on Black Task Force and City of Gainesville/Alachua County grants.

FEDERAL FUNDING REQUESTS

CONTACT INFORMATION

Name: Lt Joseph Raulerson

Phone: (352) 393-7530

Email: raulersoqh@cityofgainesville.org

Police-Youth Dialogues

As a response to RED (Racial and Ethnic Disparities), formerly known as DMC (Disproportionate Minority Contact), the Gainesville Police Department began holding monthly Police-Youth Dialogues in April of 2014. These dialogs bring twelve Officers and twelve youths between the ages of fourteen and twenty-three together in order to promote trust and understanding between the two groups.

Objectives

Other goals include fostering relationships in order to positively affect future interactions, helping the youth develop a new understanding of Police Officers and the Law, and enhancing the Officers' ability to de-escalate complex interactions with the youth.

Key Outcomes

- Alachua County Office of Victim Services Rape Crisis Center to launch a website for anonymous reports of sexual assault. The site provides information about intimate partner violence, victim rights and free resources available in the community. The University of Florida will work with GPD to develop videos aimed at sexual assault prevention that will be aired as public service announcements.

Critical Importance:

Officers are provided information surrounding RED/DMC and youth development. They discuss youth needs that drive their behavior. Communication techniques along with de-escalation techniques are also discussed. When the two groups come together, ice breakers are used to discover commonalities. Open dialogues are used to discuss stereotypes and past experiences both positive and negative. Reverse role play exercises are also utilized. Finally, the Officers and youth pair up and share dinner where more intimate discussions take place.

Level of Federal Funding Requested

Funding needs associated with this program include costs to pay the facilitator from the River Phoenix Center for Peacebuilding (\$150 per session); along with advertising costs to promote the program to the community (radio/television advertisement costs \$5,000).

FEDERAL FUNDING REQUESTS (1 to 2 page Maximum)

CONTACT INFORMATION

Name: Yvette Carter

Phone: 352-393-1207

Email: CarterSY@gru.com

PROJECT DESCRIPTION

GRU provides wastewater service to a population of approximately 185,000 people in the Gainesville area. GRU operates two water reclamation facilities, Main Street Water Reclamation Facility (MSWRF) and Kanapaha Water Reclamation Facility (KWRF), which receive, treat and beneficially reuse approximately 16 million gallons per day of wastewater. The facilities produce biosolids as a byproduct of the treatment process, which are currently beneficially used as a fertilizer and soil amendment at a local farm. GRU's current biosolids operation has been in operation for over 30 years.

GRU is transitioning to a new biosolids reuse program via a multi-phased approach as follows:

Phase 1: Construction of new \$13 million biosolids dewatering facility - currently underway and is expected to be complete in 2016. The newly constructed dewatering facility will reduce the water content of the biosolids to allow hauling and reuse by a variety of alternatives.

Phase 2: KWRF Improvements - \$1.7 million phase is to begin in 2015 and be complete in 2016. This will include improvements to the screens at the KWRF which are needed to ensure that the dewatering facility described above can function reliably.

Phase 3: MSWRF Improvements - \$3.6 million phase is to begin in 2017 and be complete in 2020. This will include improvements to the headworks and screens at the MSWRF which are needed to ensure that the dewatering facility described above can function reliably.

JUSTIFICATION

1. **Critical Importance** Recent changes in local and state regulations have resulted in costly requirements that have made land application at GRU's existing site in Alachua County infeasible.

FINANCIAL

1. **Overall** Provide \$1,000,000 in federal funding for Fiscal Year 2018 to assist in the construction of Phase 3. Phase 1 and 2 have been completed.
1. **Other Support, Matching Funds, Contributions** GRU budgeted funds would match the requested amount during FY 2016.