



SW 6TH STREET PROJECTS

RCA&PW COMMITTEE 09-23-13

***PRESENTED BY:
STEFAN BROADUS – PUBLIC WORKS***

- 1. CONSTRUCTION TIMELINE**
- 2. SW 6TH STREET RAIL TRAIL SECTION 3**
- 3. SW 6TH STREET RAIL TRAIL LANDSCAPING**
- 4. SW 6TH STREET SW 5TH- NW 3RD**
- 5. QUESTIONS / COMMENTS**

1. CONSTRUCTION TIMELINE

1. SW 6TH STREET RAIL TRAIL SECTION 3

- OCT 2013 – DEC 2013**

2. SW 6TH STREET RAIL TRAIL LANDSCAPING

- FEB 2014 – APRIL 2014**

3. SW 6TH STREET SW 5TH- NW 3RD

- NOV 2014 – MAY 2015**

2. RAIL TRAIL SECTION 3

- **LIMITS SW 2ND AVE TO NW 10TH AVE.**
- **MATCHES EXISTING NEAR SW 2ND AVE WITH BRICK BORDER.**

3. RAIL TRAIL LANDSCAPING



120713

4. SW 6TH STREET

4. SW 6TH STREET

- ***EXISTING CONDITIONS***
- ***CRA VISION***
- ***BASIS OF DESIGN***
- ***BUDGET***
- ***FLYTHROUGH***

4. SW 6TH STREET

- **EXISTING CONDITIONS**
- **CRA VISION**
- **BASIS OF DESIGN**
- **BUDGET**
- **FLYTHROUGH**



120713



120713







120713

4. SW 6TH STREET

- *EXISTING CONDITIONS*
- ***CRA VISION***
- *BASIS OF DESIGN*
- *BUDGET*
- *FLYTHROUGH*



6th Street Corridor Visioning

Corridor Analysis and Conceptual Enhancements

Gainesville, Florida



C proposed section
N.E. - 19th to 20th Street - Phase 100 location



boardwalks, bike trails and bioswales



VISION INCLUDES:

- **EXISTING CORRIDOR CONDITIONS**
- **PROPOSED SECTIONS**
- **PROPOSED MATERIALS, LANDSCAPING SPECIES, STREET FURNITURE**
- **LANDSCAPED BUFFER BETWEEN ROAD AND SIDEWALK**

LANDSCAPED BUFFER BETWEEN ROAD AND SIDEWALK:

- **SHIFTING ROAD EAST INTRUDES INTO R/T ROW.**
- **BUFFER ON WEST SIDE WOULD REQUIRE LAND RIGHTS**



LANDSCAPED BUFFER BETWEEN ROAD AND SIDEWALK:

- **SHIFTING ROAD EAST INTRUDES INTO R/T ROW.**
- **BUFFER ON WEST SIDE WOULD REQUIRE LAND RIGHTS**



LANDSCAPED BUFFER BETWEEN ROAD AND SIDEWALK:

- **SHIFTING ROAD EAST
INTRUDES INTO R/T
ROW.**
- **BUFFER ON WEST
SIDE WOULD REQUIRE
LAND RIGHTS**

Parcel	Address	Width	Length	Easement Area (SF)	Parcel Area	%
13475-001	606 SW 4th Ave	6'	162'	972	12,985	7%
13327	606 SW 3rd Ave	6'	111'	666	83,756	1%
12938	102 SW 6th St	6'	243'	1,458	32,937	4%
13659	10 NW 6th St	10'	600'	6,000	134,095	4%

0.2 Acres

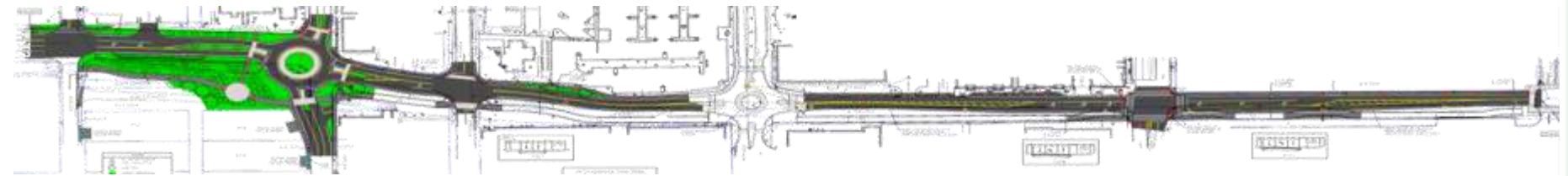
LANDSCAPED BUFFER BETWEEN ROAD AND SIDEWALK:

- ***ALTERNATE SOLUTION CONSISTS OF CONSTRUCTING SIDEWALK AT BACK OF CURB.***
- ***ACHIEVE LANDSCAPE GOALS THROUGH REDEVELOPMENT.***

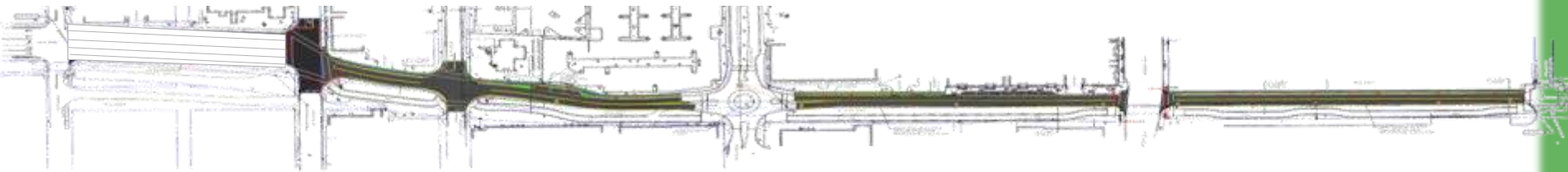
4. SW 6TH STREET

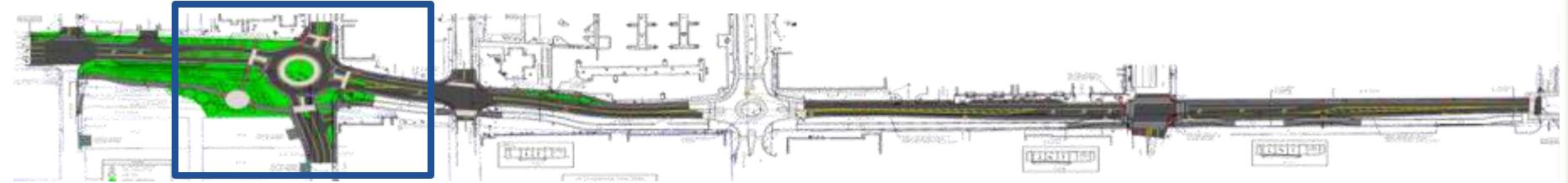
- *EXISTING CONDITIONS*
- *CRA VISION*
- ***BASIS OF DESIGN***
- *BUDGET*
- *FLYTHROUGH*

ALTERNATIVE #1



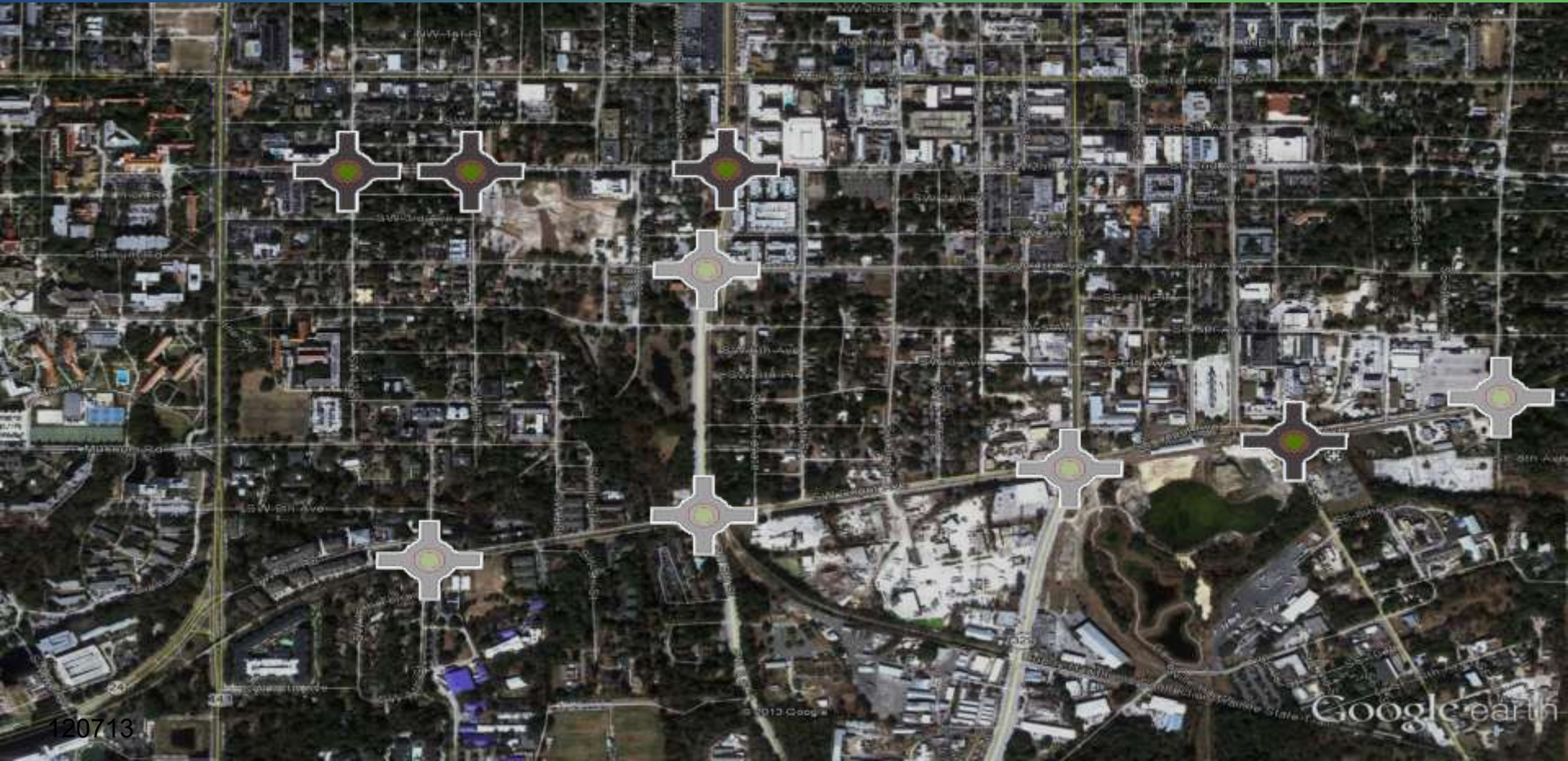
BASE



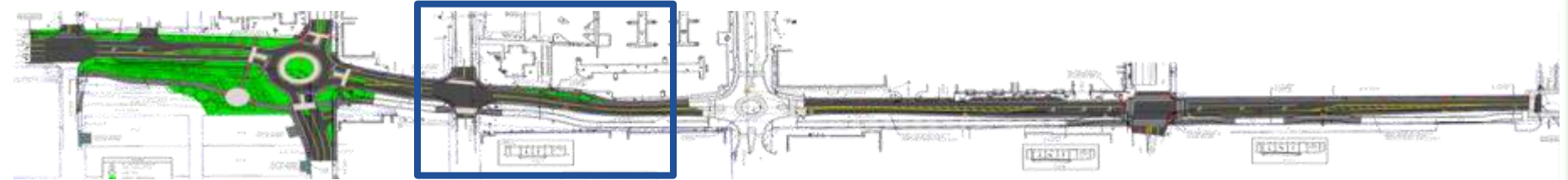


- *AVERAGE DELAY REDUCED BY 74%*
- *CONSISTENT WITH 6TH ST DESIGN CHARRETTE*
- *FHWA REPORTS SAFER INTERSECTION*
- *REDUCES FUEL & ENERGY CONSUMPTION*

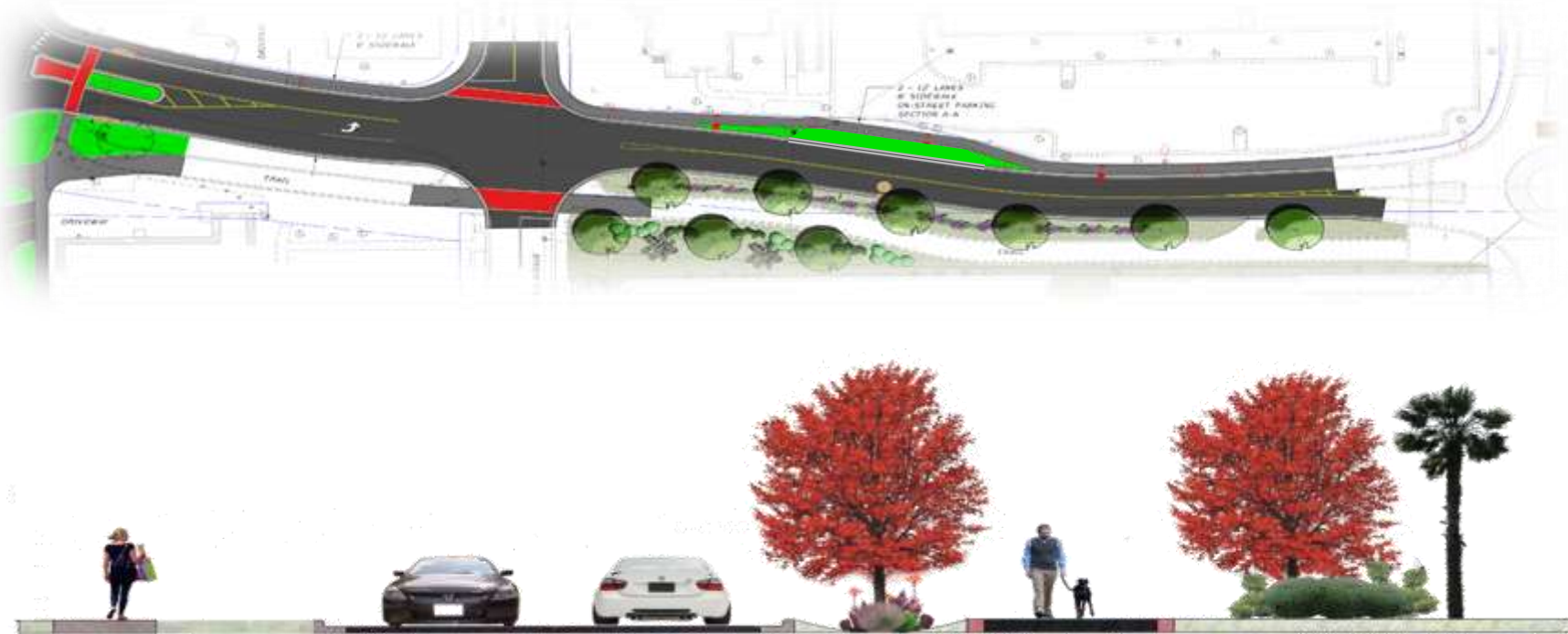
SW 6TH ST - BASIS OF DESIGN



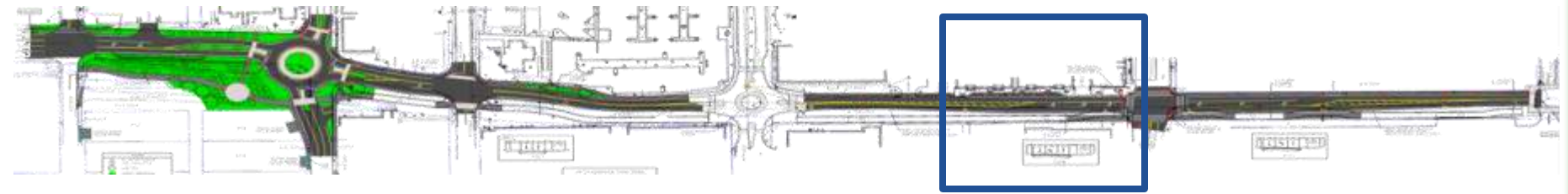
SW 6TH ST - BASIS OF DESIGN



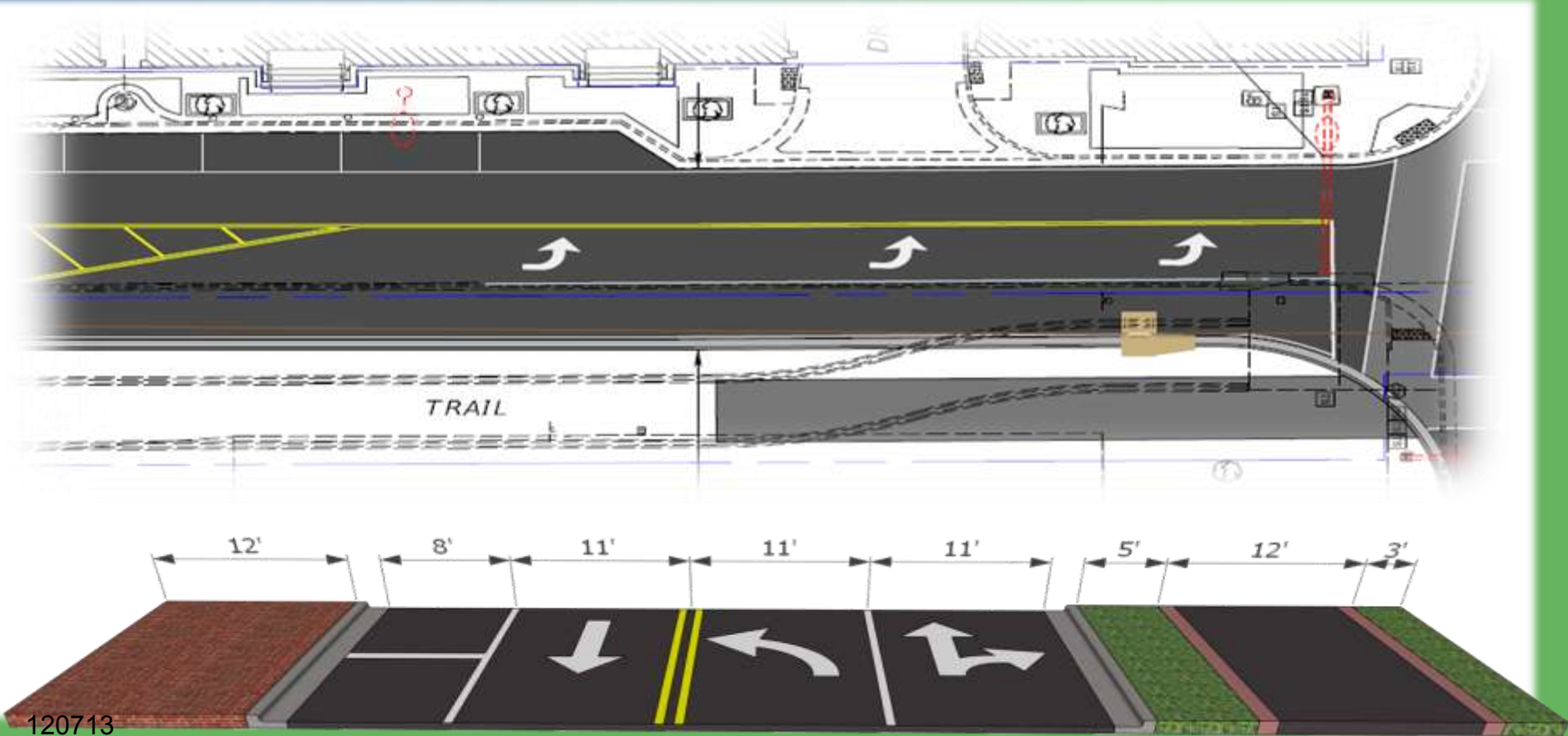
TRAIL LANDSCAPING AS SEPARATE PROJECT



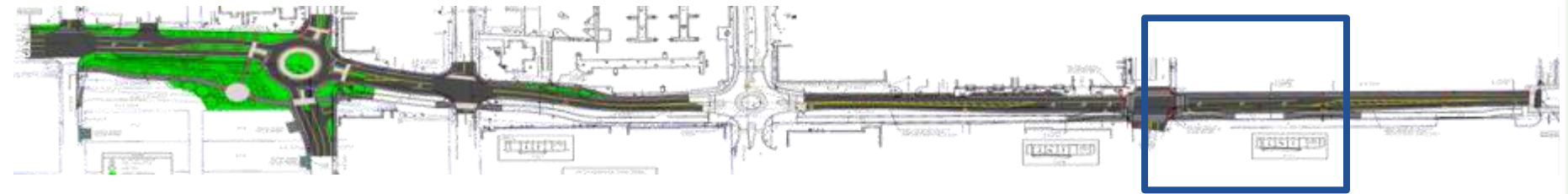
SW 6TH ST - BASIS OF DESIGN



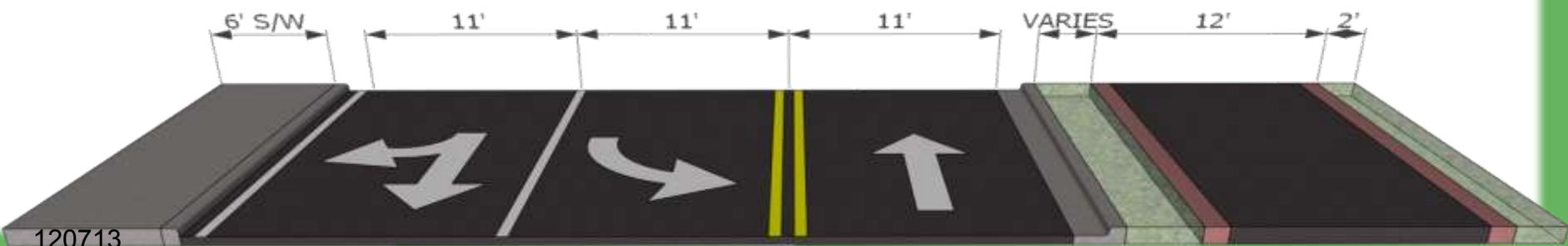
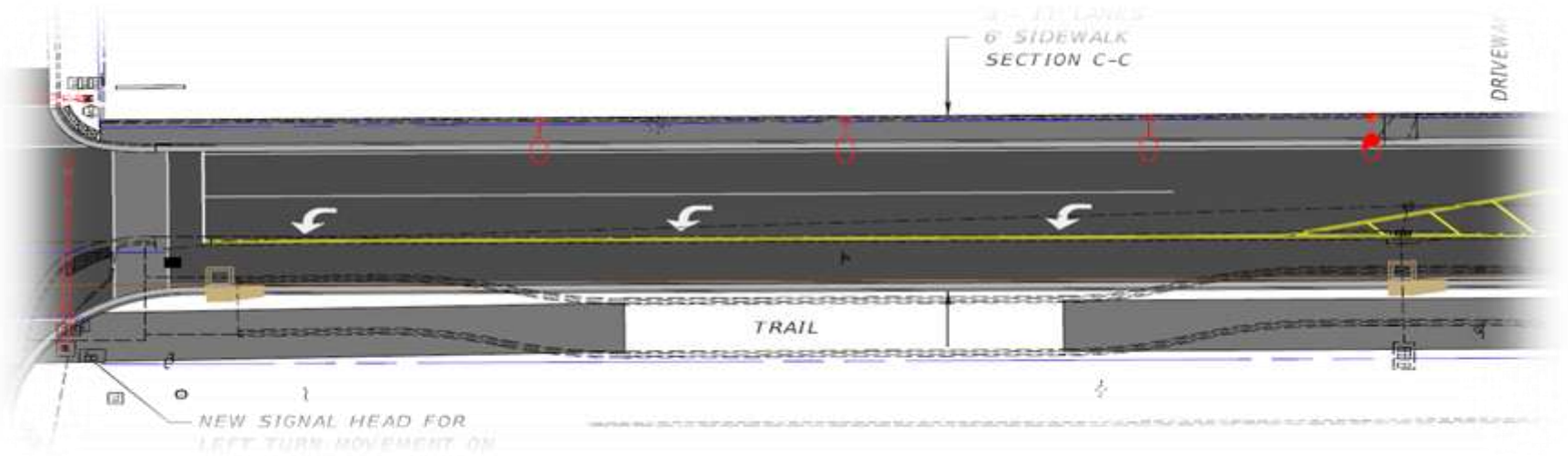
SW 6TH ST - BASIS OF DESIGN



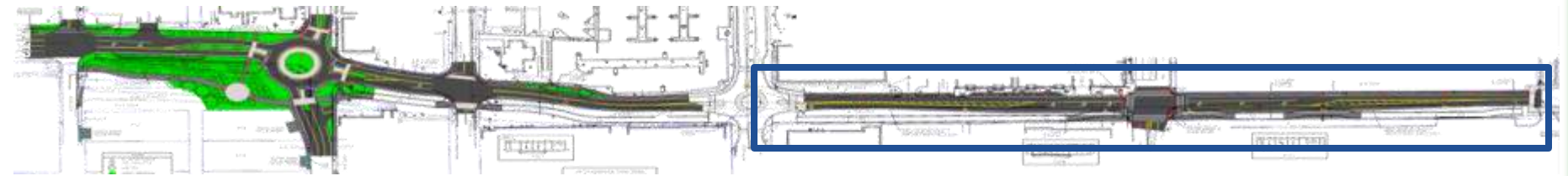
SW 6TH ST - BASIS OF DESIGN



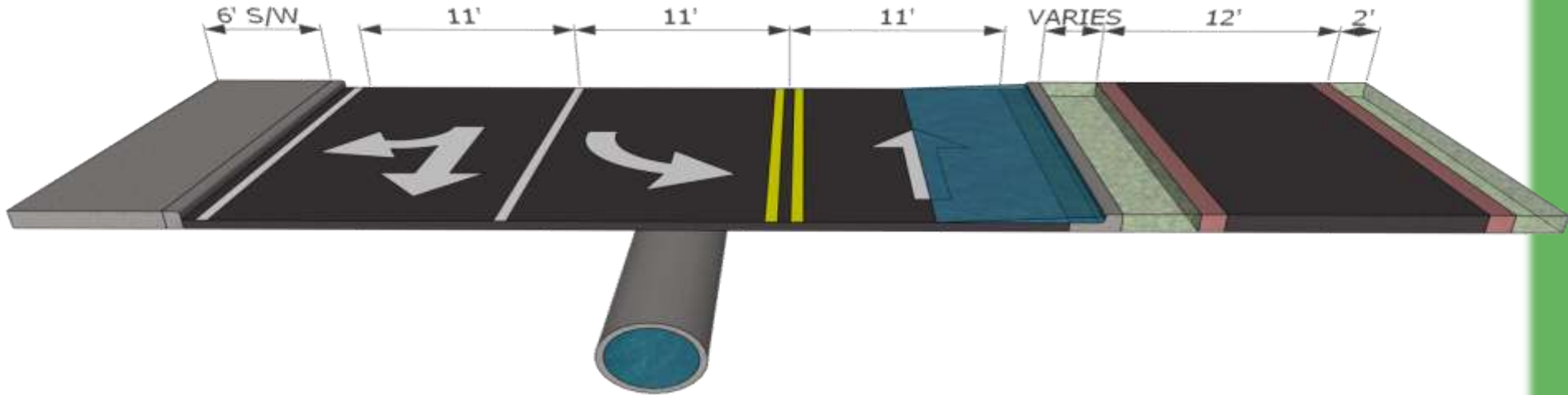
SW 6TH ST - BASIS OF DESIGN



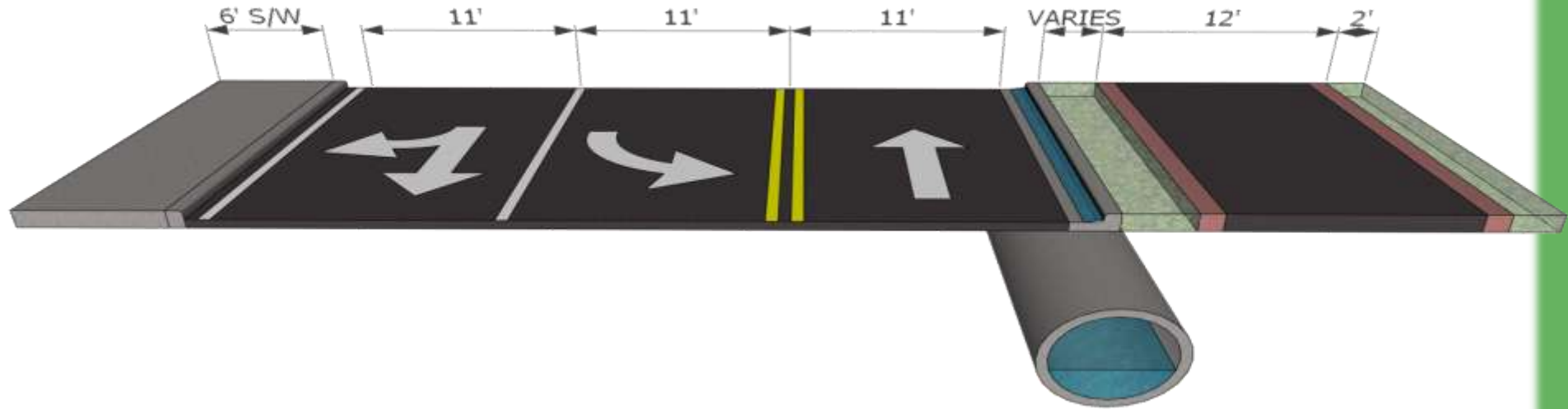
SW 6TH ST - BASIS OF DESIGN



SW 6TH ST - BASIS OF DESIGN



SW 6TH ST - BASIS OF DESIGN



4. SW 6TH STREET

- *EXISTING CONDITIONS*
- *CRA VISION*
- *BASIS OF DESIGN*
- ***BUDGET***
- *FLYTHROUGH*

CIP ROADWAY BUDGET: \$1,500,000

CIP STORMWATER BUDGET: \$300,000

TOTAL: \$1,800,000

**BASE – LEAVE SIGNAL AT SW 4TH AVENUE
AND OMIT LEFT TURN LANES AT UNIVERSITY
AVENUE: \$1,300,000**

**ALTERNATIVE #1 – IMPLEMENT
ROUNDBOUT AT SW 4TH AVENUE AND
LEFT TURN LANES AT UNIVERSITY AVENUE:
+\$300,000**

4. SW 6TH STREET

- *EXISTING CONDITIONS*
- *CRA VISION*
- *BASIS OF DESIGN*
- *BUDGET*
- *FLYTHROUGH*



5. QUESTIONS & COMMENTS