



Planning and Development Services

BUTLER PLAZA

PB-12-150 PDV

Planned Development (PD)

(Ordinance No. 121108)

9/19/13

Butler Plaza PD

- 267 acres total (including new parcels)
 - 1,000,000+ sq ft of existing development
 - Maximum development amounts:
 - 2,500,408 sq ft of commercial
 - 250,000 sq ft of office
 - 500 hotel rooms
 - 1000 multifamily units
- (total development limited to 37,591 average daily trips)

Proposed PD Layout Map

121108B

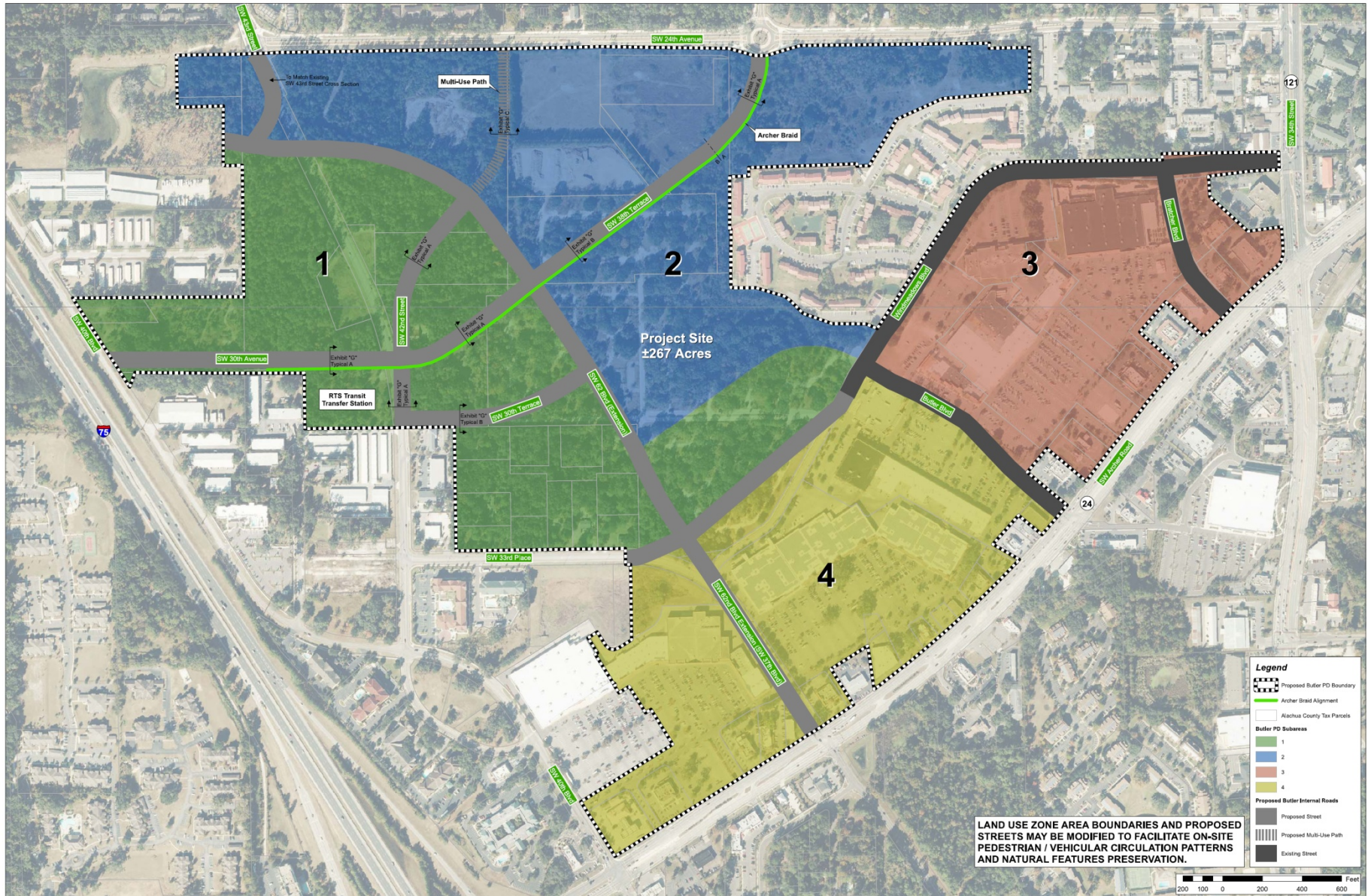


ILLUSTRATION
PD LAYOUT MAP

**Butler Development
Planned Development (PD) Layout Map**

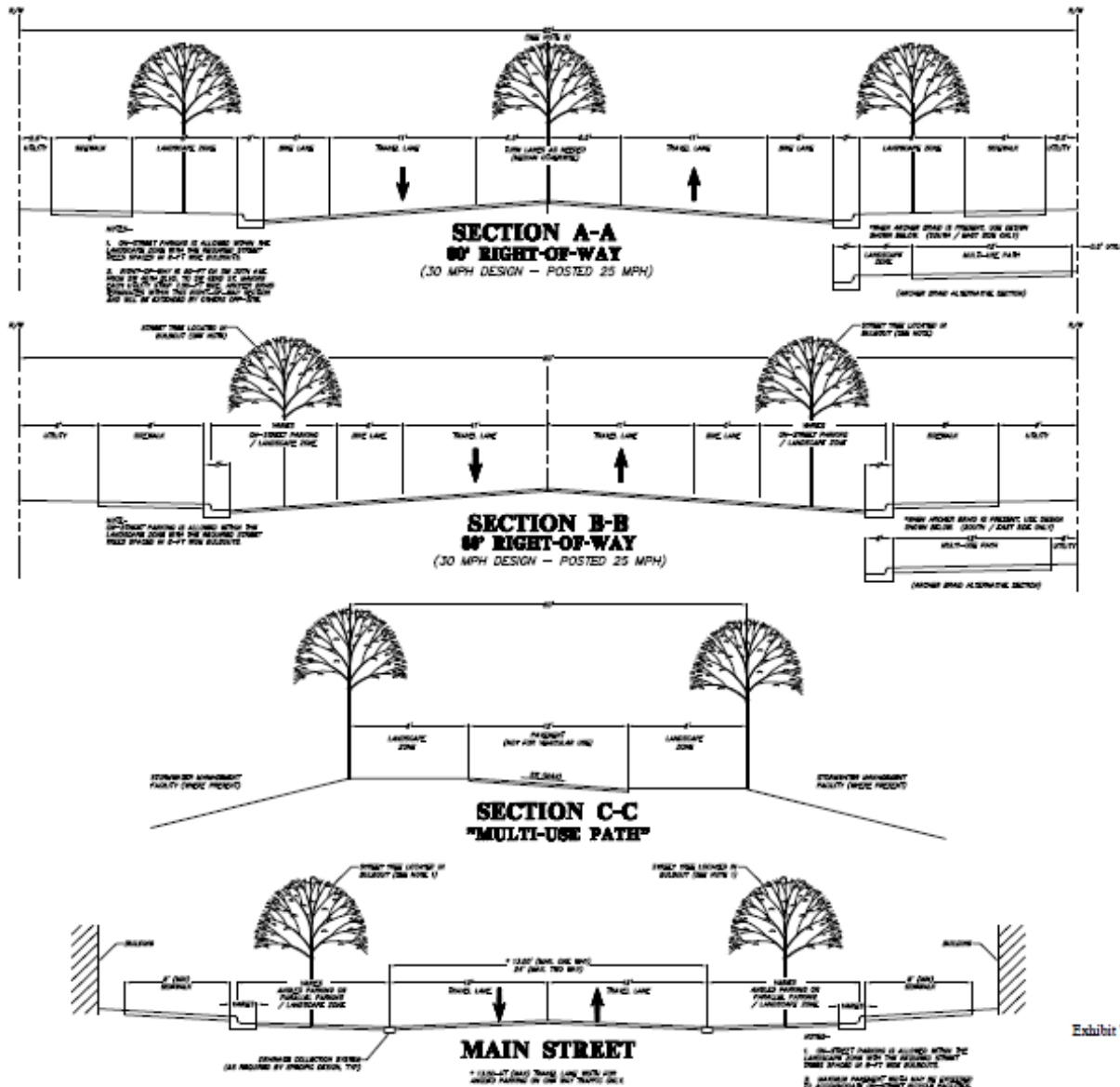
Submitted Date: 12/15/21
Submitted by: 121108B



Project No: 121108B
Project Name: Butler Development
Project Location: 121108B
Project Date: 12/15/21

CAUSEMAK, HEWITT & WAJDA, INC.
121108B
121108B
121108B
121108B



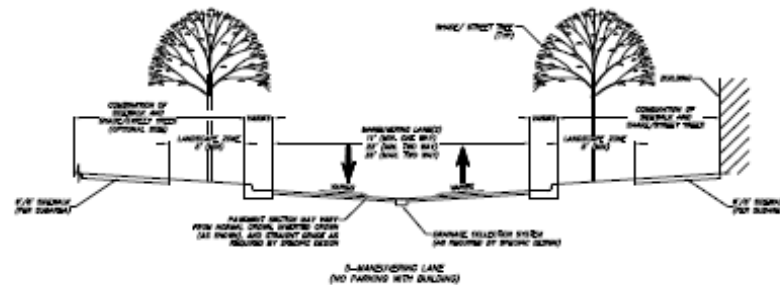
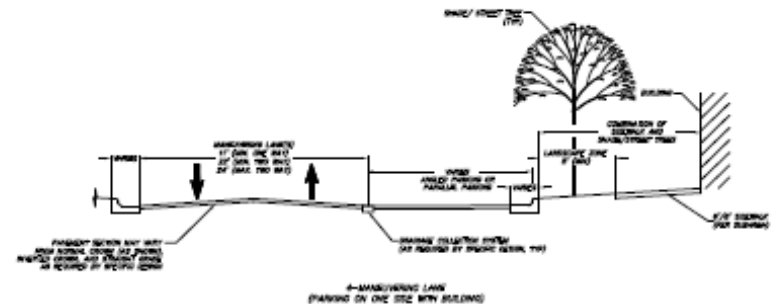
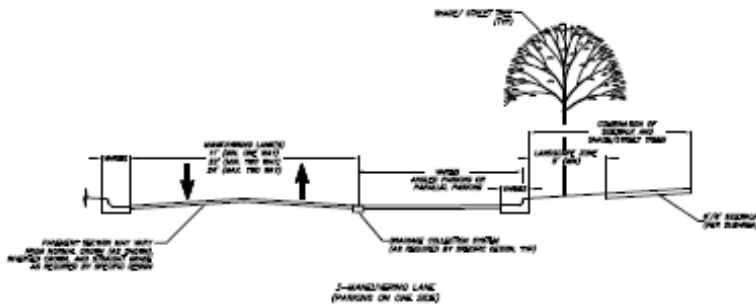
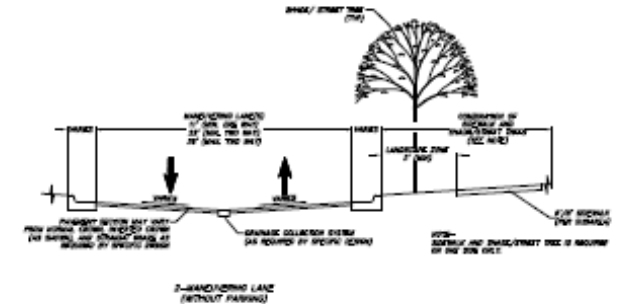
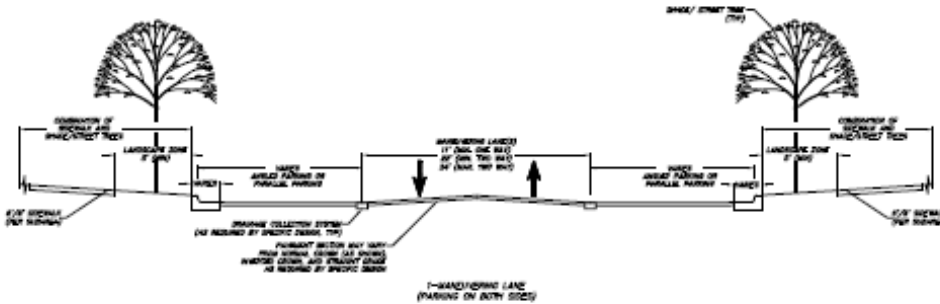


CHW
Clauson, Howell & Walker, Inc.
Engineers • Surveyors • Planners
Construction Engineering Research
1000 W. Lake Street, Suite 200
Gainesville, FL 32609
Phone: 352.339.1100
Fax: 352.339.1101
www.chw.com

DATE: 12-05-16
SCALE: AS SHOWN
PROJECT: 121108B
SHEET: 121108B-01

1 OF 2

MANEUVERING LANES



NOTES:

1. MANEUVERING LANES SHALL CONTRIBUTE TO THE INTERNAL ON-STREET PARKING. MANEUVERING LANES ARE VEHICLE USE AREAS THAT CONTAIN LIMITED PARKING SPACES AND PROVIDE SIDEWALK AND STREET TRENDS ON AT LEAST ONE SIDE. ON THAT SIDE, VEHICLES ARE PROHIBITED FROM MANEUVERING LANES TO PARKING SPACES SHALL BE LIMITED TO NO CLOSER THAN TEN-FOOT SEPARATION AS INDICATED FROM CONTINUING TO CONTINUING IN ORDER TO ADVANCE PEDESTRIAN COMFORT AND SAFETY. MANEUVERING LANES MAY PROVIDE ACCESS PARKING SPACES ALONG ONE SIDE OF SIDEWALK AND STREET TRENDS AND PROVIDED ON ONE SIDE. IF SIDEWALK AND STREET TRENDS ARE PROVIDED ON BOTH SIDES, PARKING IS ALLOWED ALONG BOTH SIDES OF THE MANEUVERING LANE.
2. WALKWAY PARALLEL WITH MAY BE PROVIDED TO ACCOMMODATE ON-STREET BICYCLE FACILITIES.

Clauson, Howell & Wajsb, Inc.
Engineers • Surveyors • Planners
Construction Engineering Associates
10000 W. US Highway 90, Suite 200, Ft. Lauderdale, FL 33322
Tel: 754.366.1100 Fax: 754.366.1101
www.chw.com

CHW
Professional Seal
Professional Engineer
Professional Surveyor
Professional Planner
Professional Architect

12-0206

2 OF 2

Staff Recommendation:

Adopt Ordinance 121108
(Butler Plaza Planned Development)