

INDEX OF BUS STOPS

SHEET NO.	BUS STOP
3	#182
4	#164
5	#165
6	#181
7	#175
8	#174
9	#1099
10	#974
11	#637
12	#642
13	#1307
14	#1301
15	#643
16	#1300
17	#176
18	#171
19	#1100

THE SPECIFIC DIMENSIONS AND LAYOUT OF EACH BUS STOP ARE SHOWN ON THE SHEETS LISTED ABOVE. EACH SHEET PROVIDES THE OVERALL CONFIGURATION OF EACH STOP IN RELATION TO THE APPROXIMATE POSITION OF EXISTING ABOVE GROUND FEATURES. THE PROPOSED CONSTRUCTION SHOULD BE REFERENCED FROM THE ABOVE GROUND FEATURE IDENTIFIED ON EACH SHEET AS THE "CONSTRUCTION CONTROL POINT (CCP)". THE CCP SHALL SERVE AS THE POSITIONAL CONTROL FOR THE PROPOSED IMPROVEMENTS WITH ALL IDENTIFIED CONSTRUCTION STARTING AT AND EXTENDING FROM THE CCP.

NOTE: LOCATION OF BUS STOPS IS APPROXIMATE ONLY.

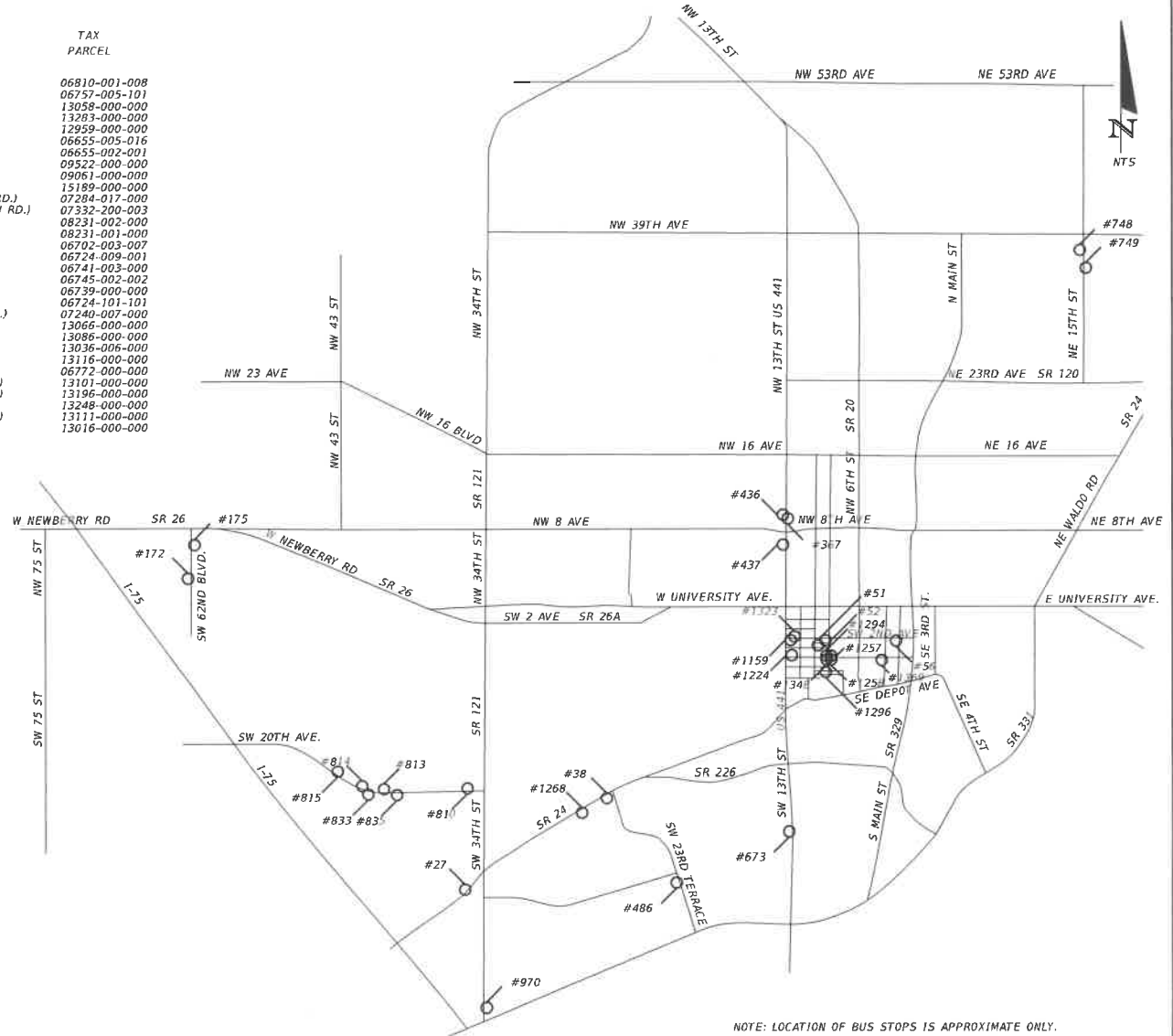
REVISIONS		DESCRIPTION	 <b>CES</b> Comprehensive Engineering Services, Inc. 201 S Orange Ave, Suite 1300 Orlando, FL 32801-3442 Certificate of Authorization Number : 7882 Ryan A. McGinnis, P.E., License No. 58684	CITY OF GAINESVILLE RTS BUS STOP IMPROVEMENTS	PROJECT LAYOUT	SHEET NO. 2
DATE	DESCRIPTION					
		PHASE I				

17 CONSTRUCTED



INDEX OF BUS STOPS

SHEET NO.	BUS STOP	REFERENCE POINT	TAX PARCEL
3	#27	SR 24, APPROX. 1,630 FT WEST OF SR 121 (SW 34TH ST.)	06810-001-008
4	#38	SR 24, APPROX. 1,55 FT WEST OF SW 23RD TERRACE	06757-005-101
5	#51	SW 17TH ST., APPROX. 860 FT SOUTH OF SR 26 (UNIVERSITY AVE.)	13058-000-000
6	#52	SW 2ND AVE., APPROX. 1,455 FT WEST OF SW 6TH ST.	13283-000-000
7	#56	SW 2ND AVE., APPROX. 1,320 FT EAST OF SW 6TH ST.	12959-000-000
8	#172	NW 62ND ST., APPROX. 1,900 FT SOUTH OF SR 26 (NEWBERRY RD.)	06655-005-016
9	#175	NW 62ND ST., APPROX. 560 FT SOUTH OF SR 26 (NEWBERRY RD.)	06655-002-001
10	#367	SR 25 (US 441), APPROX. 675 FT NORTH OF NW 8TH AVE.	09522-000-000
11	#436	SR 25 (US 441), APPROX. 780 FT NORTH OF NW 8TH AVE.	09061-000-000
12	#437	SR 25 (US 441), APPROX. 520 FT SOUTH OF NW 8TH AVE.	15189-000-000
13	#486	SW 23RD ST., APPROX. 1,990 FT NORTH OF SR 331 (SW WILLISTON RD.)	07284-017-000
14	#673	SR 25 (US 441), APPROX. 3,525 FT NORTH OF SR 331 (SW WILLISTON RD.)	07332-200-003
15	#748	NW 15TH ST., APPROX. 650 FT SOUTH OF SR 222 (NE 39TH AVE.)	08231-002-000
16	#749	NW 15TH ST., APPROX. 1,760 FT SOUTH OF SR 222 (NE 39TH AVE.)	08231-001-000
17	#810	SW 20TH AVE., APPROX. 760 FT WEST OF SR 121 (SW 34TH ST.)	06702-003-007
18	#813	SW 20TH AVE., APPROX. 3,275 FT WEST OF SR 121 (SW 34TH ST.)	06724-009-001
19	#814	SW 20TH AVE., APPROX. 4,055 FT WEST OF SR 121 (SW 34TH ST.)	06741-003-000
20	#815	SW 20TH AVE., APPROX. 4,970 FT WEST OF SR 121 (SW 34TH ST.)	06745-002-002
21	#833	SW 20TH AVE., APPROX. 3,930 FT WEST OF SR 121 (SW 34TH ST.)	06739-000-000
22	#835	SW 20TH AVE., APPROX. 2,980 FT WEST OF SR 121 (SW 34TH ST.)	06724-101-101
23	#970	SW 34TH ST., APPROX. 825 FT NORTH OF SR 331 (SW WILLISTON RD.)	07240-007-000
24	#1159	SW 2ND AVE., APPROX. 210 FT EAST OF SR 24 (SW 13TH ST.)	13066-000-000
25	#1224	SW 4TH AVE., APPROX. 305 FT EAST OF SR 24 (SW 13TH ST.)	13086-000-000
26	#1257	SW 4TH AVE., APPROX. 1,200 FT WEST OF SW 6TH ST.	13036-006-000
27	#1258	SW 4TH AVE., APPROX. 1,330 FT EAST OF SR 24 (SW 13TH ST.)	13116-000-000
28	#1268	SR 24, APPROX. 1,375 FT WEST OF SW 23RD TERRACE	06772-000-000
29	#1294	SW 10TH ST., APPROX. 1,280 FT SOUTH OF SR 26 (UNIVERSITY AVE.)	13101-000-000
30	#1296	SW 10TH ST., APPROX. 2,565 FT SOUTH OF SR 26 (UNIVERSITY AVE.)	13196-000-000
31	#1323	SW 2ND AVE., APPROX. 485 FT EAST OF SR 24 (SW 13TH ST.)	13248-000-000
32	#1348	SW 10TH ST., APPROX. 1,355 FT SOUTH OF SR 26 (UNIVERSITY AVE.)	13111-000-000
33	#1369	SW 4TH AVE., APPROX. 1,005 FT WEST OF SR 329 (S MAIN ST.)	13016-000-000



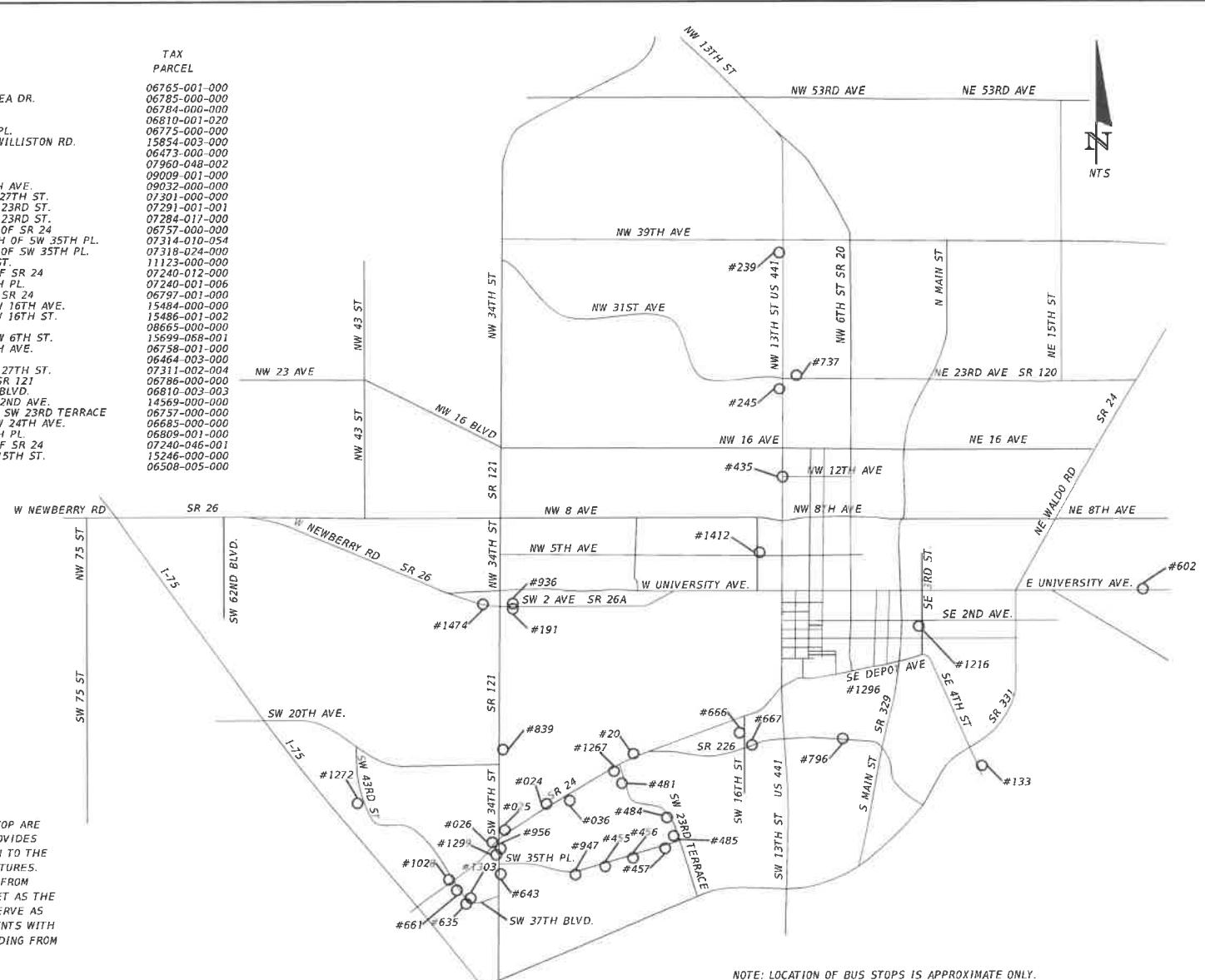
THE SPECIFIC DIMENSIONS AND LAYOUT OF EACH BUS STOP ARE SHOWN ON THE SHEETS LISTED ABOVE. EACH SHEET PROVIDES THE OVERALL CONFIGURATION OF EACH STOP IN RELATION TO THE APPROXIMATE POSITION OF EXISTING ABOVE GROUND FEATURES. THE PROPOSED CONSTRUCTION SHOULD BE REFERENCED FROM THE ABOVE GROUND FEATURE IDENTIFIED ON EACH SHEET AS THE "CONSTRUCTION CONTROL POINT (CCP)". THE CCP SHALL SERVE AS THE POSITIONAL CONTROL FOR THE PROPOSED IMPROVEMENTS WITH ALL IDENTIFIED CONSTRUCTION STARTING AT AND EXTENDING FROM THE CCP

NOTE: LOCATION OF BUS STOPS IS APPROXIMATE ONLY.

REVISIONS				Comprehensive Engineering Services, Inc. 201 S Orange Ave, Suite 1300 Orlando, FL 32801-3442 Certificate of Authorization : 7862 Ryan A. McGinnis, P.E., License No. 58694	CITY OF GAINESVILLE RTS BUS STOP IMPROVEMENTS	PROJECT LAYOUT	SHEET NO. 2
DATE	DESCRIPTION	DATE	DESCRIPTION				
			PHASE III & IV				

INDEX OF BUS STOPS

SHEET NO.	BUS STOP	REFERENCE POINT	TAX PARCEL
3	#20	WB SR 24, AT SW 23RD DR.	06765-001-000
4	#24	WB SR 24, APPROX. 680 FT. WEST OF SURGE AREA DR.	06785-000-000
5	#25	WB SR 24, APPROX. 550 FT. EAST OF SR 121	06784-000-000
6	#26	WB SR 24, APPROX. 725 FT. WEST OF SR 121	06810-001-020
7	#36	EB SR 24, APPROX. 550 FT. WEST OF SW 28TH PL.	06775-000-000
8	#133	NB SE 4TH ST, APPROX. 600 FT. SOUTH OF SE WILLISTON RD.	15854-003-000
9	#191	EB SR 26A, APPROX. 500 FT. EAST OF SR 121	06473-000-000
10	#239	SB US 441, APPROX. 340 FT. SOUTH OF SR 222	07960-048-002
11	#245	SB US 441, APPROX. 400 FT. SOUTH OF SR 120	09009-001-000
12	#435	SB US 441, APPROX. 680 FT. NORTH OF NW 10TH AVE.	09032-000-000
13	#455	EB SW 35TH PL., APPROX. 400 FT. EAST OF SW 27TH ST.	07301-000-000
14	#456	EB SW 35TH PL., APPROX. 970 FT. WEST OF SW 23RD ST.	07291-001-001
15	#457	EB SW 35TH PL., APPROX. 325 FT. WEST OF SW 23RD ST.	07284-011-000
16	#481	SB SW 23RD TERRACE, APPROX. 660 FT. SOUTH OF SR 24	06757-000-000
17	#484	SB SW 23RD TERRACE, APPROX. 1,200 FT. NORTH OF SW 35TH PL.	07314-010-054
18	#485	SB SW 23RD TERRACE, APPROX. 150 FT. NORTH OF SW 35TH PL.	07318-024-000
19	#602	WB SR 26, APPROX. 760 FT. EAST OF NE 25TH ST.	11123-000-000
20	#635	EB SW 37TH BLVD., APPROX. 1,200 FT. SOUTH OF SR 24	07240-012-000
21	#643	NB SR 121, APPROX. 400 FT. SOUTH OF SW 35TH PL.	07240-001-006
22	#661	EB SW 37TH BLVD., APPROX. 170 FT. SOUTH OF SR 24	06797-001-000
23	#666	SB SW 16TH ST., APPROX. 560 FT. NORTH OF SW 16TH AVE.	15484-000-000
24	#667	EB SW 16TH AVE., APPROX. 200 FT. EAST OF SW 16TH ST.	15486-001-002
25	#737	WB SR 120, APPROX. 200 FT. EAST OF US 441	08665-000-000
26	#796	EB SW 16TH AVE., APPROX. 860 FT. WEST OF SW 6TH ST.	15699-008-001
27	#839	NB SR 121, APPROX. 150 FT. NORTH OF SW 20TH AVE.	06758-001-000
28	#936	WB SR 26A, APPROX. 510 FT. EAST OF SR 121	06464-003-000
29	#947	EB SW 35TH PL., APPROX. 725 FT. WEST OF SW 27TH ST.	07311-002-004
30	#956	WB OLD ARCHER RD., APPROX. 40 FT. EAST OF SR 121	06786-000-000
31	#1028	WB SR 24, APPROX. 260 FT. WEST OF SW 37TH BLVD.	06810-003-003
32	#1216	SB SR 24, APPROX. 150 FT. SOUTH OF SE 2ND AVE.	14569-000-000
33	#1267	WB OLD ARCHER RD., APPROX. 600 FT. WEST OF SW 23RD TERRACE	06757-000-000
34	#1272	SB SW 43RD ST., APPROX. 325 FT. NORTH OF SW 24TH AVE.	06685-000-000
35	#1299	SB SR 121, APPROX. 625 FT. NORTH OF SW 35TH PL.	06809-001-000
36	#1303	NB SW 37TH BLVD., APPROX. 1,200 FT. SOUTH OF SR 24	07240-046-001
37	#1412	WB NW 5TH AVE, APPROX. 25 FT. EAST OF NW 15TH ST.	15246-000-000
38	#1474	WB SR 26A, APPROX. 425 FT. WEST OF SR 121	06508-005-000



THE SPECIFIC DIMENSIONS AND LAYOUT OF EACH BUS STOP ARE SHOWN ON THE SHEETS LISTED ABOVE. EACH SHEET PROVIDES THE OVERALL CONFIGURATION OF EACH STOP IN RELATION TO THE APPROXIMATE POSITION OF EXISTING ABOVE GROUND FEATURES. THE PROPOSED CONSTRUCTION SHOULD BE REFERENCED FROM THE ABOVE GROUND FEATURE IDENTIFIED ON EACH SHEET AS THE "CONSTRUCTION CONTROL POINT (CCP)". THE CCP SHALL SERVE AS THE POSITIONAL CONTROL FOR THE PROPOSED IMPROVEMENTS WITH ALL IDENTIFIED CONSTRUCTION STARTING AT AND EXTENDING FROM THE CCP.

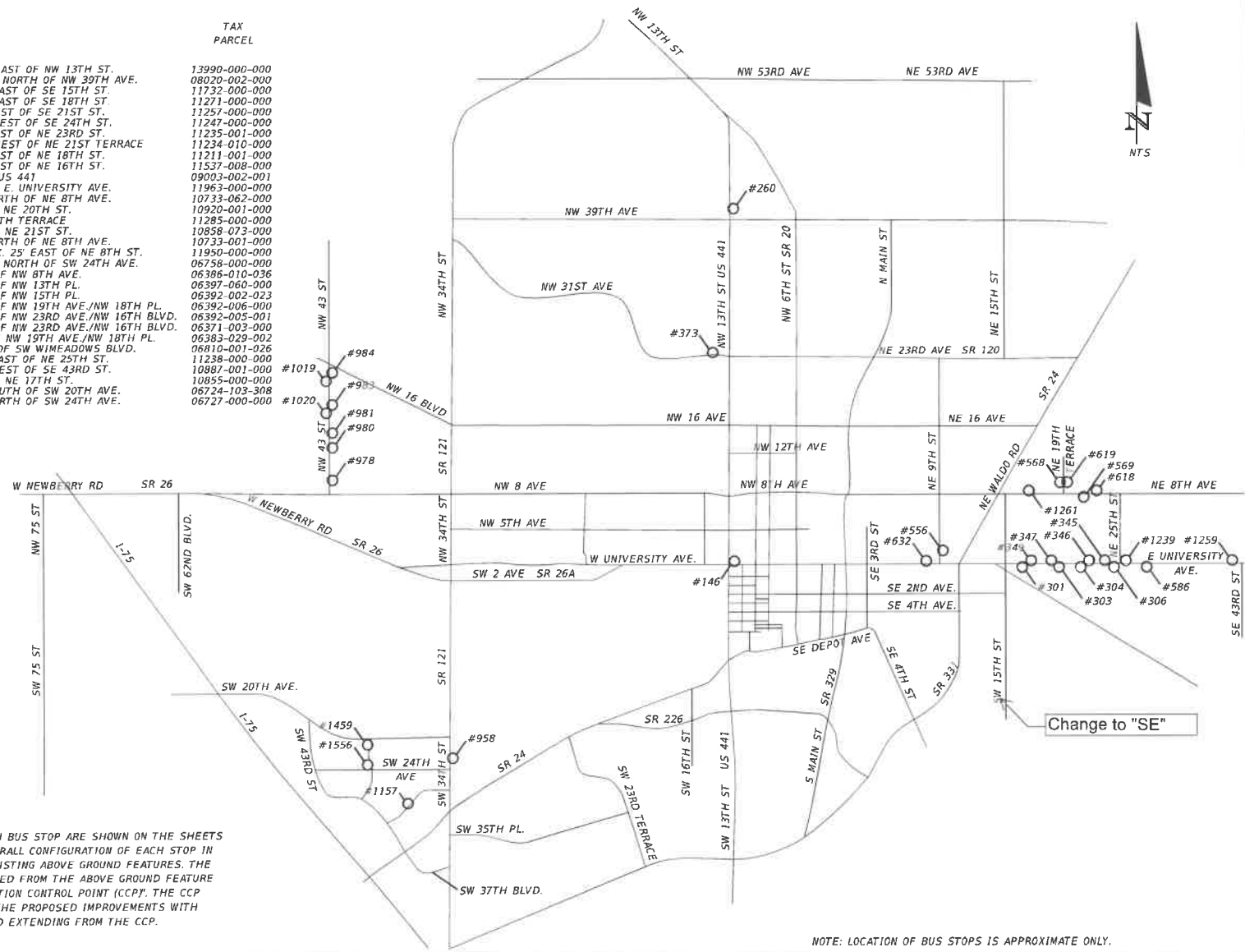
NOTE: LOCATION OF BUS STOPS IS APPROXIMATE ONLY.

REVISIONS		DESCRIPTION		Comprehensive Engineering Services, Inc. 201 S Orange Ave, Suite 1300 Orlando, FL 32801-3442 Certificate of Authorization : 7862 Ryan A. McGinnis, P.E., License No. 58694	CITY OF GAINESVILLE RTS BUS STOP IMPROVEMENTS	PROJECT LAYOUT	SHEET NO. 2
DATE	DESCRIPTION	DATE	DESCRIPTION				
	<b>PRELIMINARY NOT FOR CONSTRUCTION</b> 3/21/2017 9:54:00 AM		<b>PHASE V</b>				

DESIGN

INDEX OF BUS STOPS

SHEET NO.	BUS STOP	REFERENCE POINT	TAX PARCEL
3	#146	WB W. UNIVERSITY AVE. APPROX. 220' EAST OF NW 13TH ST.	13990-000-000
4	#260	NB NW 13TH ST. (US 441) APPROX. 345' NORTH OF NW 39TH AVE.	08020-002-000
5	#301	EB E. UNIVERSITY AVE. APPROX. 360' EAST OF SE 15TH ST.	11732-000-000
6	#303	EB E. UNIVERSITY AVE. APPROX. 120' EAST OF SE 18TH ST.	11271-000-000
7	#304	EB E. UNIVERSITY AVE. APPROX. 50' WEST OF SE 21ST ST.	11257-000-000
8	#306	EB E. UNIVERSITY AVE. APPROX. 150' WEST OF SE 24TH ST.	11247-000-000
9	#345	WB E. UNIVERSITY AVE. APPROX. 60' EAST OF NE 23RD ST.	11235-001-000
10	#346	WB E. UNIVERSITY AVE. APPROX. 160' WEST OF NE 21ST TERRACE	11234-010-000
11	#347	WB E. UNIVERSITY AVE. APPROX. 50' EAST OF NE 18TH ST.	11211-001-000
12	#349	WB E. UNIVERSITY AVE. APPROX. 50' EAST OF NE 16TH ST.	11537-008-000
13	#373	WB SR 120, APPROX. 475 FT. WEST OF US 441	09003-002-001
14	#556	NB NE 9TH ST. APPROX. 165' NORTH OF E. UNIVERSITY AVE.	11963-000-000
15	#568	SB NE 19TH TERRACE APPROX. 170' NORTH OF NE 8TH AVE.	10733-062-000
16	#569	EB NE 8TH AVE. APPROX. 260' EAST OF NE 20TH ST.	10920-001-000
17	#586	EB SR 26 APPROX. 100' EAST OF SE 26TH TERRACE	11285-000-000
18	#618	WB NE 8TH AVE. APPROX. 125' EAST OF NE 21ST ST.	10858-073-000
19	#619	NB NE 19TH TERRACE APPROX. 170' NORTH OF NE 8TH AVE.	10733-001-000
20	#632	WB SR 26 (E. UNIVERSITY AVE.) APPROX. 25' EAST OF NE 8TH ST.	11950-000-000
21	#958	NB SR 121 (SW 34TH ST.) APPROX. 485' NORTH OF SW 24TH AVE.	06758-000-000
22	#978	NB NW 43RD ST. APPROX. 480' NORTH OF NW 8TH AVE.	06386-010-036
23	#980	NB NW 43RD ST. APPROX. 165' NORTH OF NW 13TH PL.	06397-060-000
24	#981	NB NW 43RD ST. APPROX. 100' NORTH OF NW 15TH PL.	06392-002-023
25	#983	NB NW 43RD ST. APPROX. 260' NORTH OF NW 19TH AVE./NW 18TH PL.	06392-006-000
26	#984	NB NW 43RD ST. APPROX. 590' SOUTH OF NW 23RD AVE./NW 16TH BLVD.	06392-005-001
27	#1019	SB NW 43RD ST. APPROX. 725' SOUTH OF NW 23RD AVE./NW 16TH BLVD.	06371-003-000
28	#1020	SB NW 43RD ST. APPROX. 70' NORTH OF NW 19TH AVE./NW 18TH PL.	06383-029-002
29	#1157	WB SW 35TH BLVD. APPROX. 45' WEST OF SW WIMEADOWS BLVD.	06810-001-026
30	#1239	WB E UNIVERSITY AVE. APPROX. 110' EAST OF NE 25TH ST.	11238-000-000
31	#1259	WB E UNIVERSITY AVE. APPROX. 215' WEST OF SE 43RD ST.	10887-001-000
32	#1261	WB NE 8TH AVE. APPROX. 210' EAST OF NE 17TH ST.	10855-000-000
33	#1459	SB SW 38TH TERRACE APPROX. 150' SOUTH OF SW 20TH AVE.	06724-103-308
34	#1556	SB SW 38TH TERRACE APPROX. 500' NORTH OF SW 24TH AVE.	06727-000-000



THE SPECIFIC DIMENSIONS AND LAYOUT OF EACH BUS STOP ARE SHOWN ON THE SHEETS LISTED ABOVE. EACH SHEET PROVIDES THE OVERALL CONFIGURATION OF EACH STOP IN RELATION TO THE APPROXIMATE POSITION OF EXISTING ABOVE GROUND FEATURES. THE PROPOSED CONSTRUCTION SHOULD BE REFERENCED FROM THE ABOVE GROUND FEATURE IDENTIFIED ON EACH SHEET AS THE "CONSTRUCTION CONTROL POINT (CCP)". THE CCP SHALL SERVE AS THE POSITIONAL CONTROL FOR THE PROPOSED IMPROVEMENTS WITH ALL IDENTIFIED CONSTRUCTION STARTING AT AND EXTENDING FROM THE CCP.

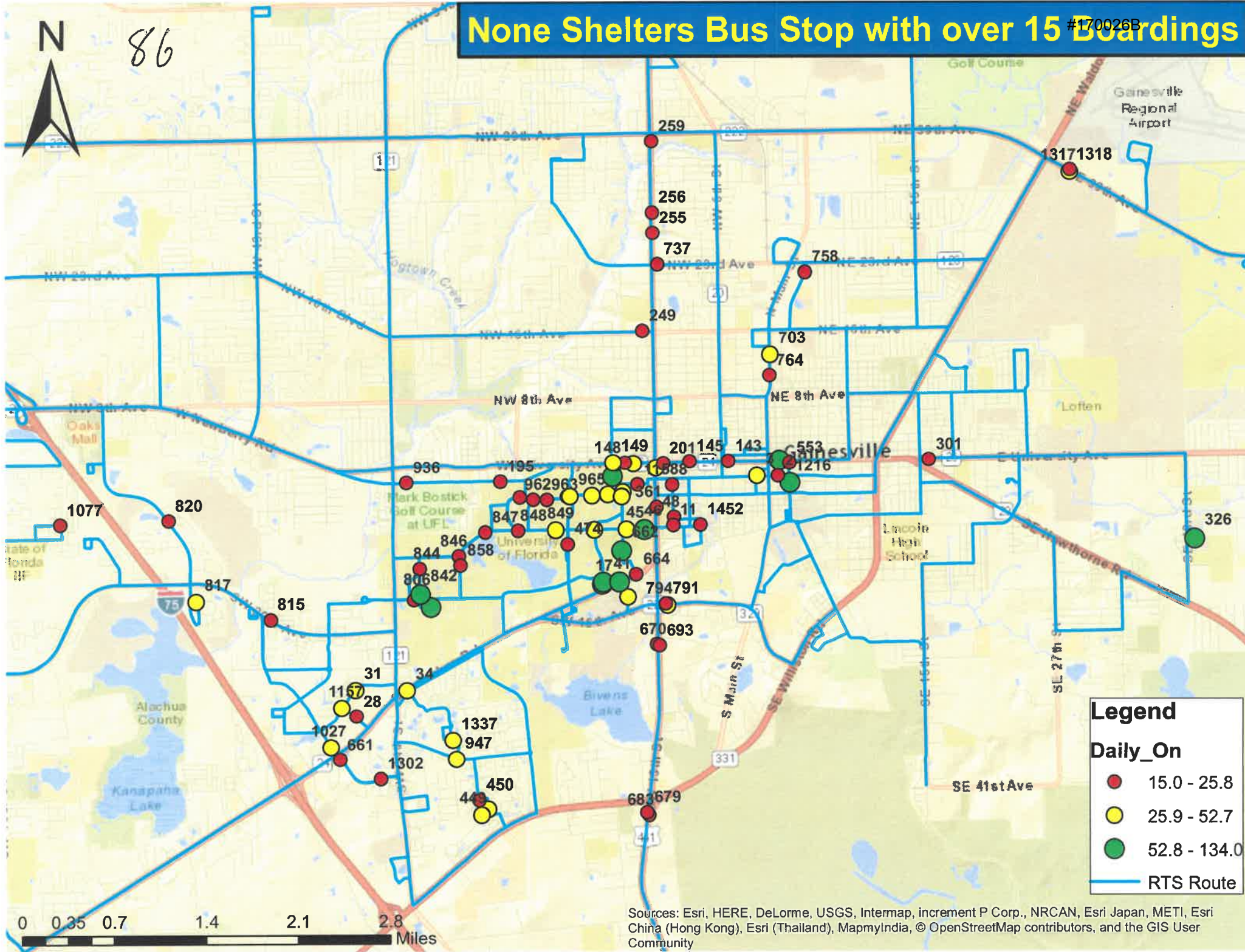
NOTE: LOCATION OF BUS STOPS IS APPROXIMATE ONLY.

REVISIONS				Comprehensive Engineering Services, Inc. 201 S Orange Ave, Suite 1300 Orlando, FL 32801-3442 Certificate of Authorization: 7862 Ryan A. McGinnis, P.E., License No. 58694	CITY OF GAINESVILLE RTS BUS STOP IMPROVEMENTS	PROJECT LAYOUT	SHEET NO.
DATE	DESCRIPTION	DATE	DESCRIPTION				2
	<b>PRELIMINARY</b> NOT FOR CONSTRUCTION 4/19/2017 8:49:42 AM		<b>PHASE VI</b> DESIGN				

# None Shelters Bus Stop with over 15 Boardings

#170026B

86



**Legend**

**Daily\_On**

- 15.0 - 25.8
- 25.9 - 52.7
- 52.8 - 134.0
- RTS Route

Sources: Esri, HERE, DeLorme, USGS, Intermap, increment P Corp., NRCAN, Esri Japan, METI, Esri China (Hong Kong), Esri (Thailand), MapmyIndia, © OpenStreetMap contributors, and the GIS User Community