



Parks, Recreation & Cultural Affairs Department

Capital Improvement Projects & Sensitive Lands Acquisition

#080128b

Explanation

- On June 3rd, 2008 the Alachua County Commission held a special meeting
- The Quality of Life Coalition request to place a measure on the Nov. 4th, 2008 ballot
- Protection for drinking water sources; water quality of rivers, lakes, and streams; wildlife habitats; environmentally sensitive lands, natural areas and forests; and create, improve and maintain parks and recreational facilities
- 0.5% local government infrastructure surtax for a two year period from Jan. 1, 2009 until Dec. 31, 2010
- The infrastructure surtax is projected to generate approximately \$40 million

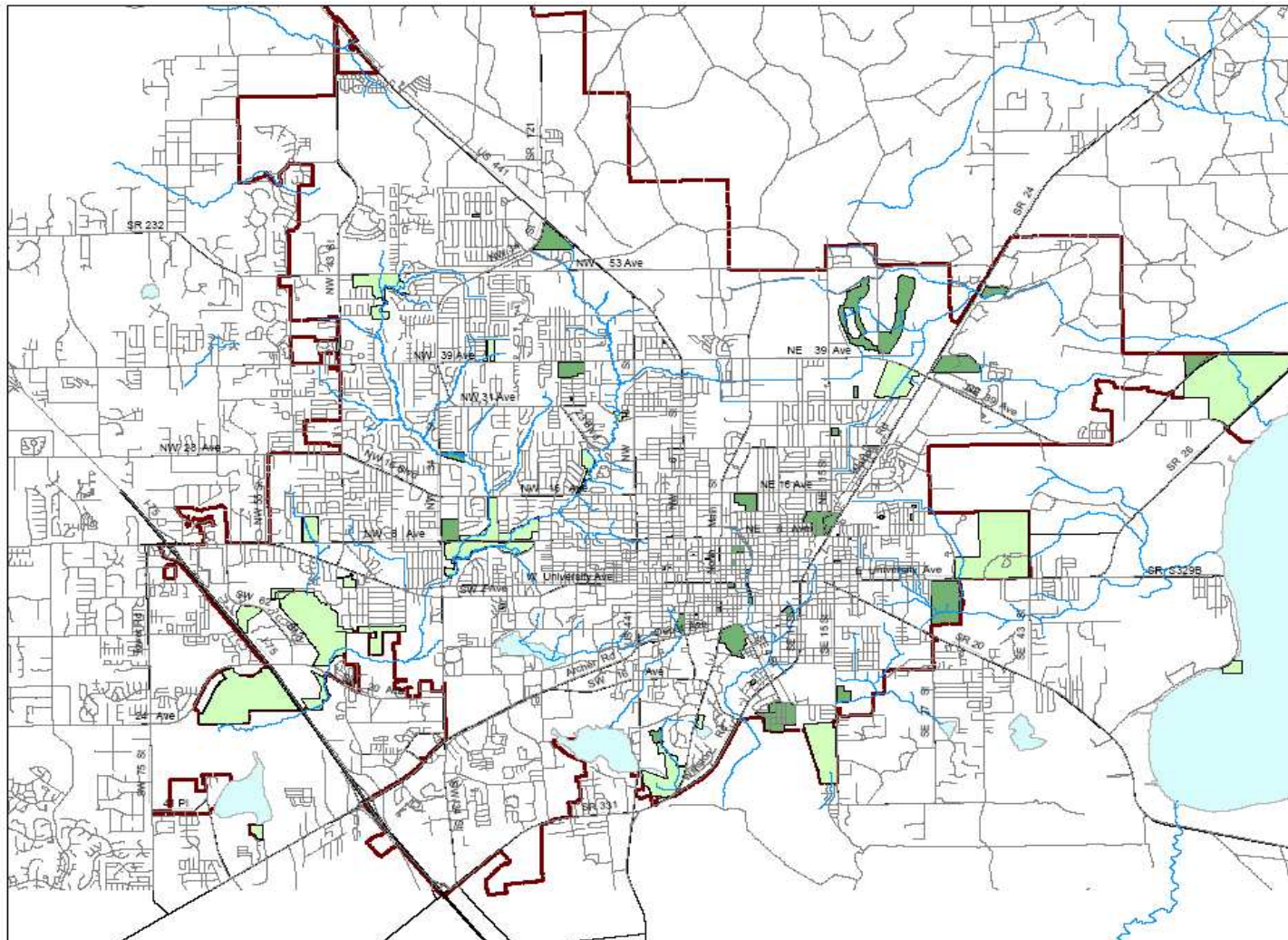
Explanation (continued)

- In order to move forward the City has been asked to develop a CIP Priority List
- As part of the proposed 5 year Capital Improvement Plan for 2009 through 2013 a \$75 million priority list was developed for the Parks, Recreation & Cultural Affairs Department
- This list outlined 26 projects including operating costs
- The list was reviewed & reduced down to 23 projects that met the established criteria
- This revised list was reviewed and approved by the Public Recreation and Parks Advisory Board & the Nature Centers Commission

Explanation (continued)

- Also developed was a Sensitive Lands Prioritization list for acquisition
- This list was reviewed and approved by the Nature Centers Commission
- The list included input from the Alachua County Forever staff as well as Alachua Conversation Trust
- Recreation, Cultural Affairs & Public Works Committee Review


Active and Passive Parks



City of Gainesville Parks

- Active Parks
- Nature Parks
- Creeks
- Major Roads
- Lakes
- City Limits



 This map is for informational purposes only. Do not rely on this map for accuracy of boundaries, size, or location. The City of Gainesville does not assume responsibility to update this information or for any error or omission on this map. For specific information, you are directed to contact the City of Gainesville, Florida.

CIP Criteria

- To identify potential projects that could be funded by the sales tax, criteria were developed
- The Criteria list was divided into seven areas and different weights were given for each criteria

CIP Criteria List

- Operating Cost
- Completed Quickly
- Sustainable Features
- Public Visibility
- Federal, State or Local Requirements
- Public Participation
- Public Opinion Poll Ranking

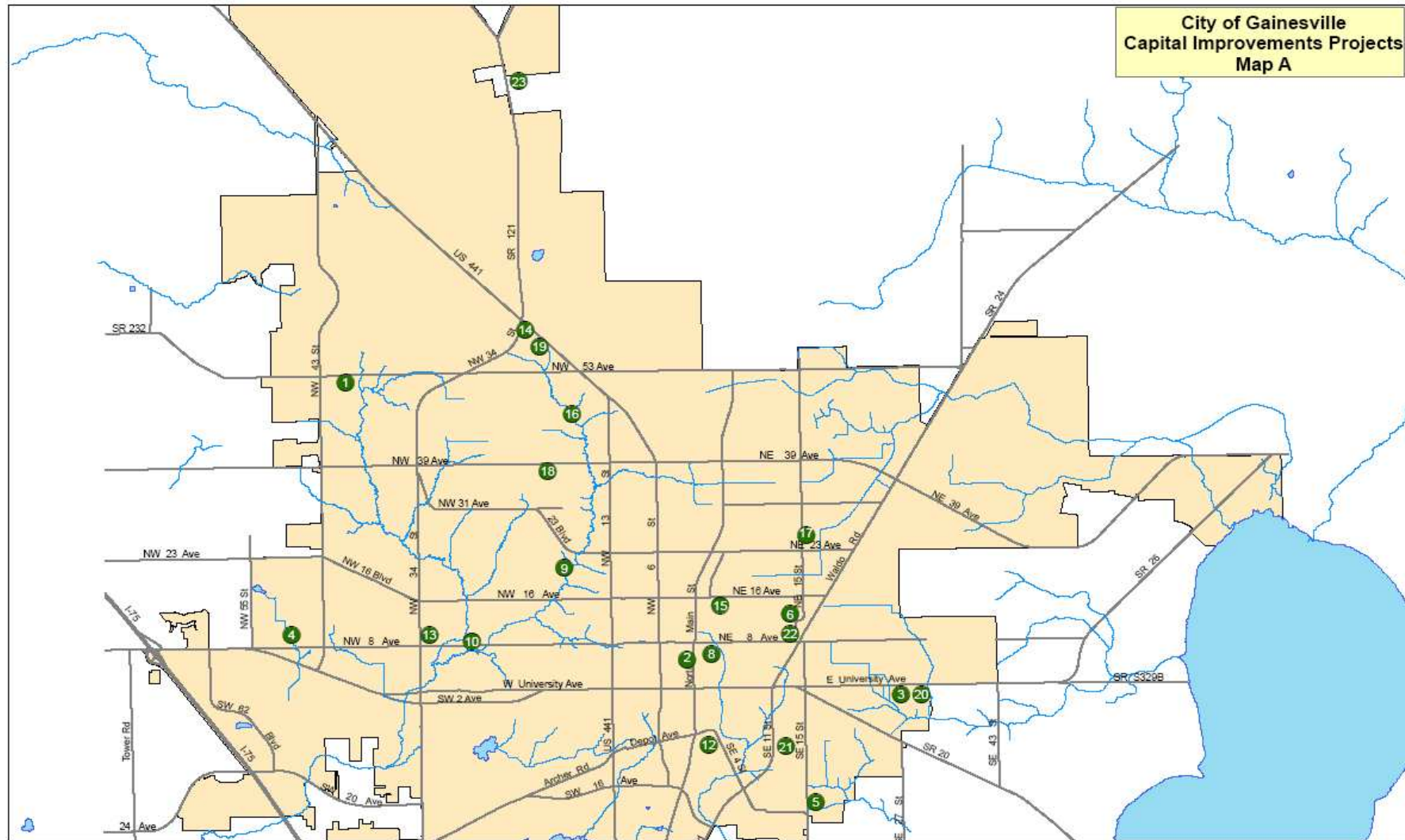
CIP Criteria Ranking

RANKING	CAPITAL IMPROVEMENT PROJECTS	CAPITAL	OPERATING
1	Possum Creek Park	\$ 500,000.00	
2	Rosa Williams Center	\$ 250,000.00	
3	Cone Park Improvements	\$ 100,000.00	
4	Cofrin Nature Park	\$ 200,000.00	\$ 10,000.00
5	TB McPherson	\$ 330,000.00	
6	Citizens Park/NE Pool	\$ 460,000.00	\$ 30,000.00
7	Nature Park Improvements	\$ 500,000.00	\$ 25,000.00
8	Thomas Center A	\$ 250,000.00	
9	Alfred A. Ring Park	\$ 500,000.00	
10	Loblolly Trails	\$ 750,000.00	
11	Neighborhood Park Improvements	\$ 500,000.00	\$ 25,000.00
12	Depot Park Improvements	\$ 1,000,000.00	\$ 50,000.00

CIP Criteria Ranking (continued)

13	Westside Park and Pool	\$ 730,000.00	\$ 20,000.00
14	Northside Park (to include Senior Recreation Center)	\$ 1,500,000.00	
15	Northeast Park	\$ 280,000.00	
16	Hogtown Creek Headwaters Park	\$ 150,000.00	\$ 50,000.00
17	Smokey Bear Park	\$ 600,000.00	\$ 20,000.00
18	Greentree Park	\$ 130,000.00	
19	Northside Park	\$ 130,000.00	
20	Cone Park with track & multi-purpose fields	\$ 3,400,000.00	\$ 350,000.00
21	Lincoln Park	\$ 250,000.00	
22	Citizens Park/NE Pool with heating	\$ 360,000.00	\$ 270,000.00
23	NW Soccer Complex	\$ 1,000,000.00	\$ 260,000.00
	TOTALS:	\$ 13,870,000.00	\$1,110,000.00

CIP Project Distribution



Sensitive Land Acquisition Basic Criteria

- Size of the parcel or tract
- Proximity
- Significant natural features
- Published reports

Sensitive Land Acquisition Ranking

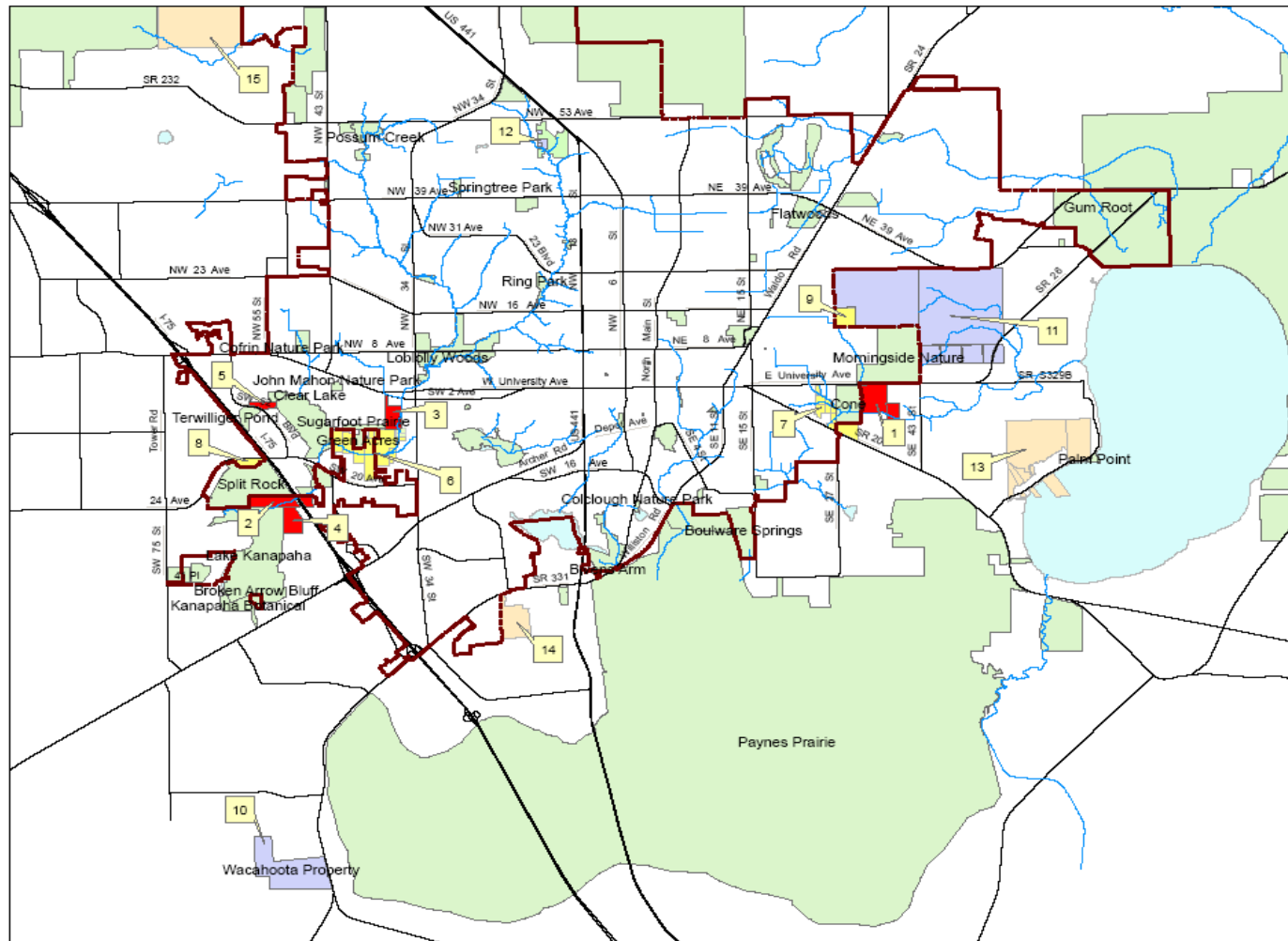
RANKING	SENSITIVE LANDS ACQUISITION	ACREAGE
1	Johnson	89
2	Barnes	50
3	Burch	40
4	Barnes #2	44.5
5	Rubric	17
6	Hogtown Creek Floodplain	189
7	Cone Park SW	70
8	Henderson #2	20
9	Crawford	40

Sensitive Land Acquisition Ranking (continued)

POSSIBLE LESS-THAN-FEE ACQUISITIONS			
10	Wacahoota	200	
11	Morningside Buffers	1236	
12	Hogtown Head Waters Easements	12.5	
ADDITIONAL PROPERTIES RECOMMENDED BY ACT			
13	Newnan's Lake SW Corridor	172, 287, 15 12, 16	
14	Serenola Forest	96	
15	Blues Creek Ravine Access	62	
TOTALS:		2,668	\$ 2,836,300.00

\$2,836,300.00 represents 20% anticipated allocation of \$14,181,502.00 City of Gainesville allocation

Sensitive Land Acquisition



Sensitive Lands: Acquisition Priorities

Map B

- City Limits
- Creeks
- Major Roads
- Top Priority Lands
- Second Priority Lands
- Less-than-fee acquisitions
- Recommended by ACT
- Parks/Conservation Areas
- Lakes



0 0.3 0.6 1.2 Miles



This map is for informational purposes only. Do not rely on this map for accuracy of dimensions, size, or location. The City of Gainesville does not assume responsibility to provide this information or for any error or omission on this map. For specific information, you are directed to contact the City of Gainesville, Florida.

Capital Improvement Projects & Sensitive Lands Acquisition

What needs to be done:

- Approve and submit CIP list to Alachua County Commission
- Approve and submit Sensitive Lands list
- Review and approve the distribution formula
- Develop Interlocal Agreement with County