


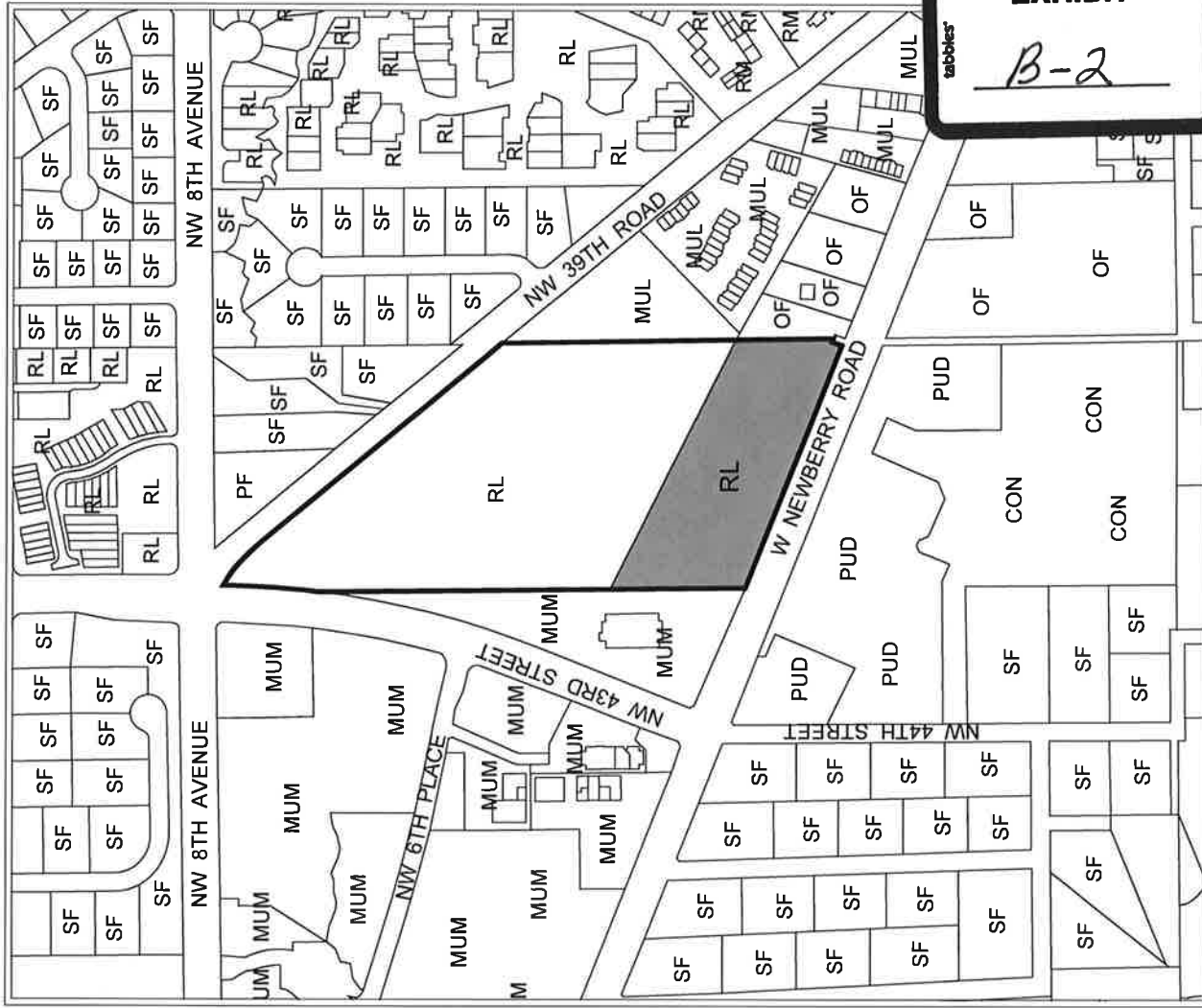


EXHIBIT  
 B-1

AERIAL PHOTOGRAPH		Petition Number	130468C
<b>Name</b>	Causseaux, Hewett & Walpole, Inc., agent for Bishop of Diocese of St Augustine	<b>Petition Request</b>	Amend the City of Gainesville Future Land Use map from Residential Low (RL) to Mixed-use Low Intensity (8-30 units/acre) (MUL)
<b>Name</b>		<b>Petition Request</b>	
 No Scale			

# City of Gainesville Land Use Designations

- SF Single Family (up to 8 du/acre)
- RL Residential Low Density (up to 12 du/acre)
- MUL Residential Medium Density (8-30 du/acre)
- MUM Mixed Use Medium Intensity (12-30 du/acre)
- O Office
- CON Conservation
- PF Public and Institutional Facilities
- PUD Planned Use District



**EXHIBIT**  
B-2

Area under petition consideration

-----  
Division line between two land use categories

**EXISTING LAND USE** 130468C

**Petition Request**  
Amend the City of Gainesville Future Land Use map from Residential Low (RL) to Mixed-use Low Intensity (8-30 units/acre) (MUL)

**Petition Number**  
PB-14-51 LUC

**Name**  
Causseaux, Hewett & Walpole, Inc., agent for Bishop of Diocese of St Augustine

**Petition Request**  
Amend the City of Gainesville Future Land Use map from Residential Low (RL) to Mixed-use Low Intensity (8-30 units/acre) (MUL)

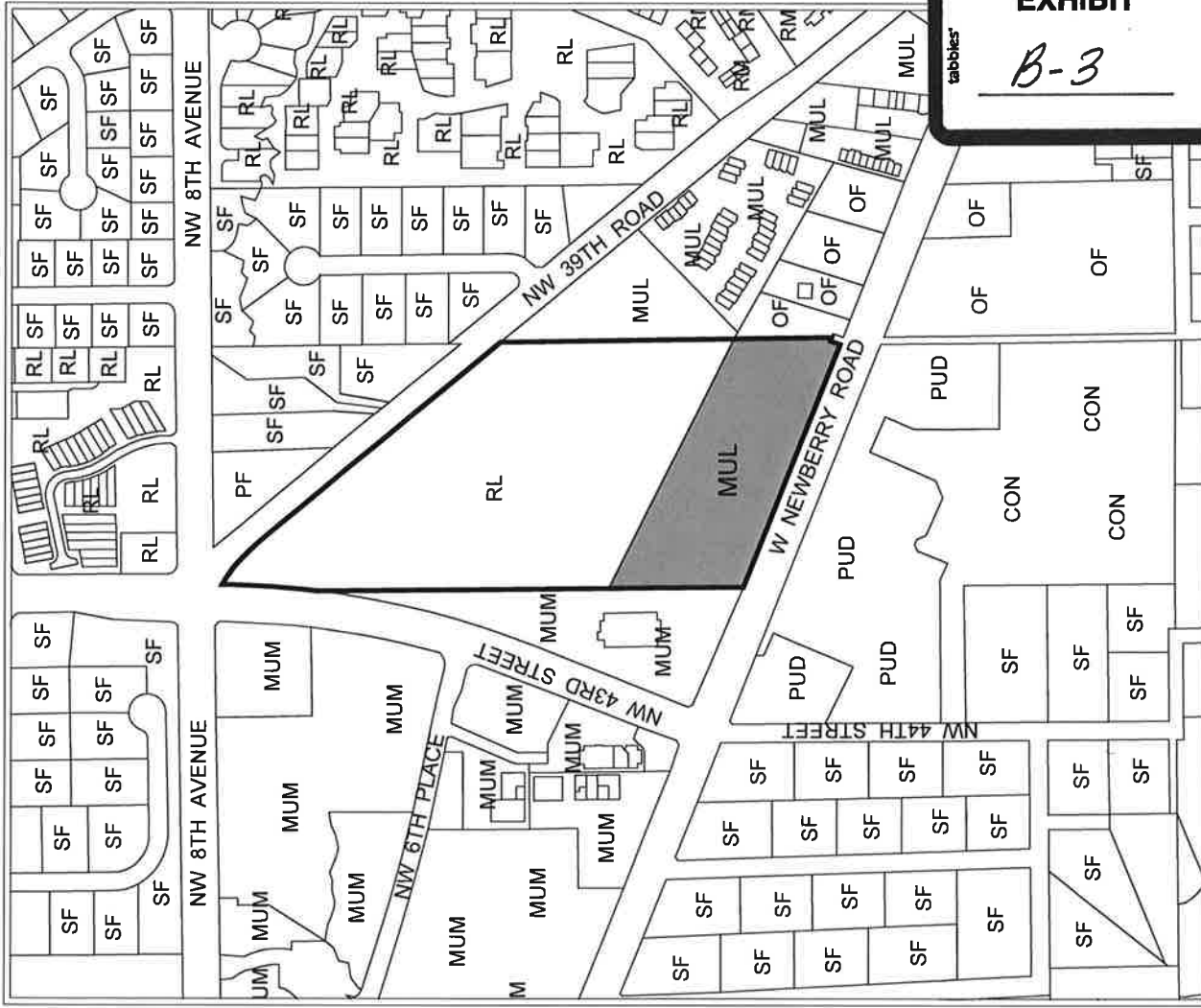
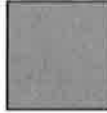


# City of Gainesville Land Use Designations

- SF Single Family (up to 8 du/acre)
- RL Residential Low Density (up to 12 du/acre)
- MUL Residential Medium Density (8-30 du/acre)
- MUM Mixed Use Medium Intensity (12-30 du/acre)
- O Office
- CON Conservation
- PF Public and Institutional Facilities
- PUD Planned Use District

----- Division line between two land use categories

Area under petition consideration



**PROPOSED LAND USE**  
130468C

Name	Petition Request	Petition Number
Causseaux, Hewett & Walpole, Inc., agent for Bishop of Diocese of St Augustine	Amend the City of Gainesville Future Land Use map from Residential Low (RL) to Mixed-use Low Intensity (8-30 units/acre) (MUL)	PB-14-51 LUC

