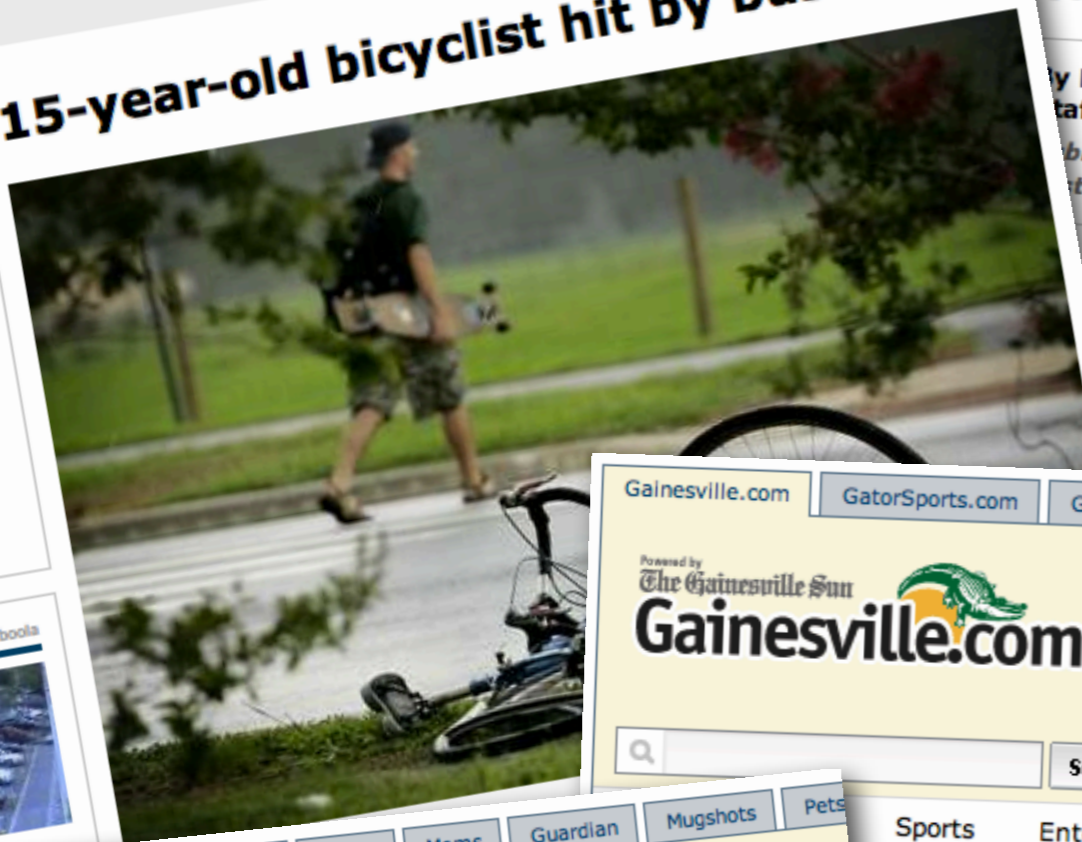


LEGISLATIVE #

120542

Transportation safety

15-year-old bicyclist hit by bus



Pedestrian dies after being hit by car on Archer Road

By Karen Voyles
Staff writer

Published: Monday, November 2, 2009 at 8:35 p.m.
Last Modified: Monday, November 2, 2009 at 8:35 p.m.

A pedestrian died Monday night after being hit by a car on Archer

Names of those involved were not immediately being released by
Gainesville Police.

Gainesville.com GatorSports.com Gainesville Magazine Scene Moms Guardian Mugshots Pets

Powered by
The Gainesville Sun
Gainesville.com

Protect Our
Forest Friends.



Search

Web Search by YAHOO! 69° CLOUDY, GAINESVILLE, FL | HOME DELIVERY

Sports Entertainment Living Opinion Blogs Obituaries

Repository

Pedestrian killed on Archer Road was '08 UF grad



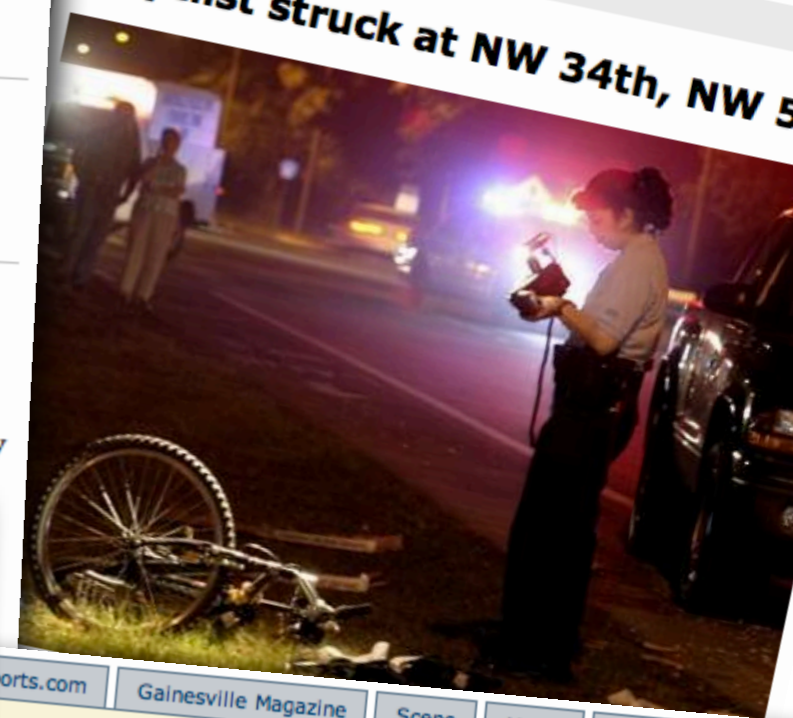
in Elaine

Charles E. Roop/The Gainesville Sun

Karen Voyles & Cindy Swirko

Published: Wednesday, November 4, 2008

Bicyclist struck at NW 34th, NW 5



GatorSports.com Gainesville Magazine Scene Moms Guardian Mugshots

le.com

Repair leaky air ducts.

Search

Web Search by YAHOO! 69° CLOUDY, GAINESVILLE, FL | HOME DELIVERY

Sports Entertainment Living Opinion Blogs Obituaries

Pedestrian killed on SW Gainesville street

By DEBORAH BALL
Sun staff writer

Published: Friday, March 4, 2005 at 6:01 a.m.
Last Modified: Thursday, March 3, 2005 at 11:29 p.m.

An unidentified woman was killed Thursday when she was hit by a car while crossing the street in southwest Gainesville, according to the Florida Highway Patrol.

The woman was found at the 4000 block of SW 20th Avenue after witnesses called in the incident at 7:04 p.m., FHP said.



Gainesville bicyclist dies in crash

By KAREN VOYLES
Sun staff writer

Published: Wednesday, April 9, 2008 at 7:23 a.m.
Last Modified: Wednesday, April 9, 2008 at 7:23 a.m.

A Gainesville bicyclist riding on the Hawthorne Bicycle trail died Tuesday following a collision with a van.

Carmen Peterson, 20, was pronounced dead at the scene of the crash by Alachua County Fire rescue at 5:18 p. m.

According to the Florida Highway Patrol, Peterson was wearing her helmet while riding a Windsor Tourist bike westbound on the trail. Peterson began crossing

Gainesville.com Gainesville Magazine Scene Moms Guardian Mugshots Pets

com

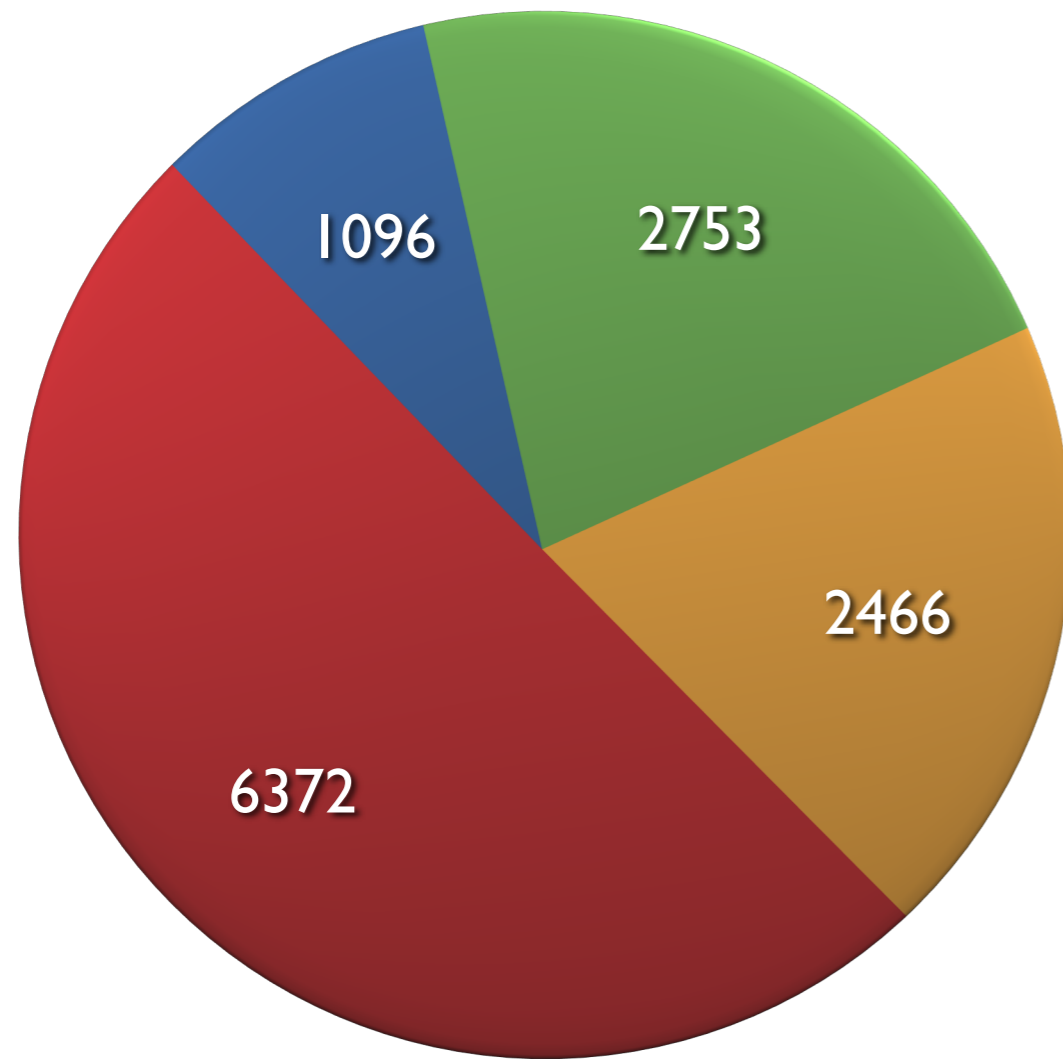
Search

Web Search by YAHOO! 69° CLOUDY, GAINESVILLE, FL | HOME DELIVERY

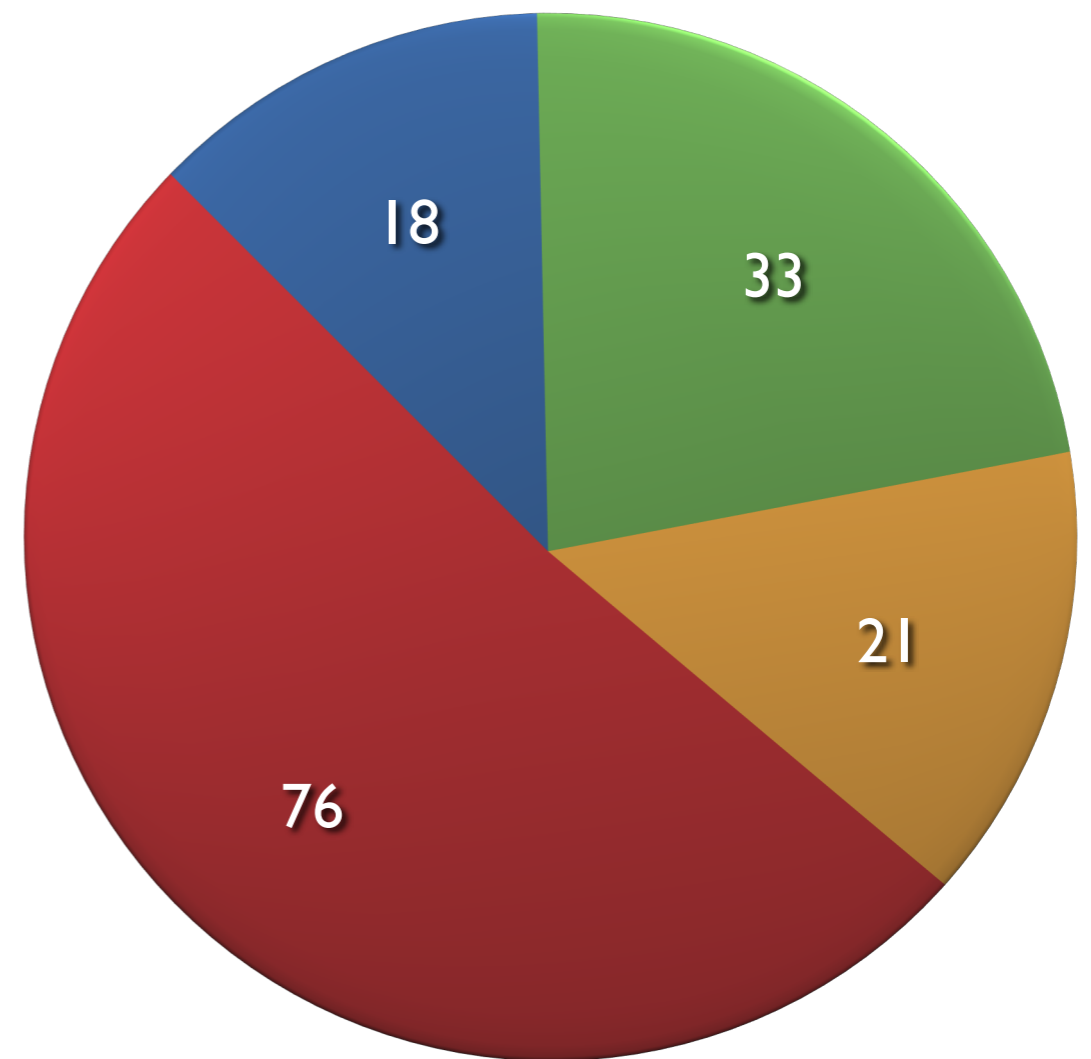
Sports Entertainment Living Opinion Blogs Obituaries





Fatal injuries - What is killing us?

Florida



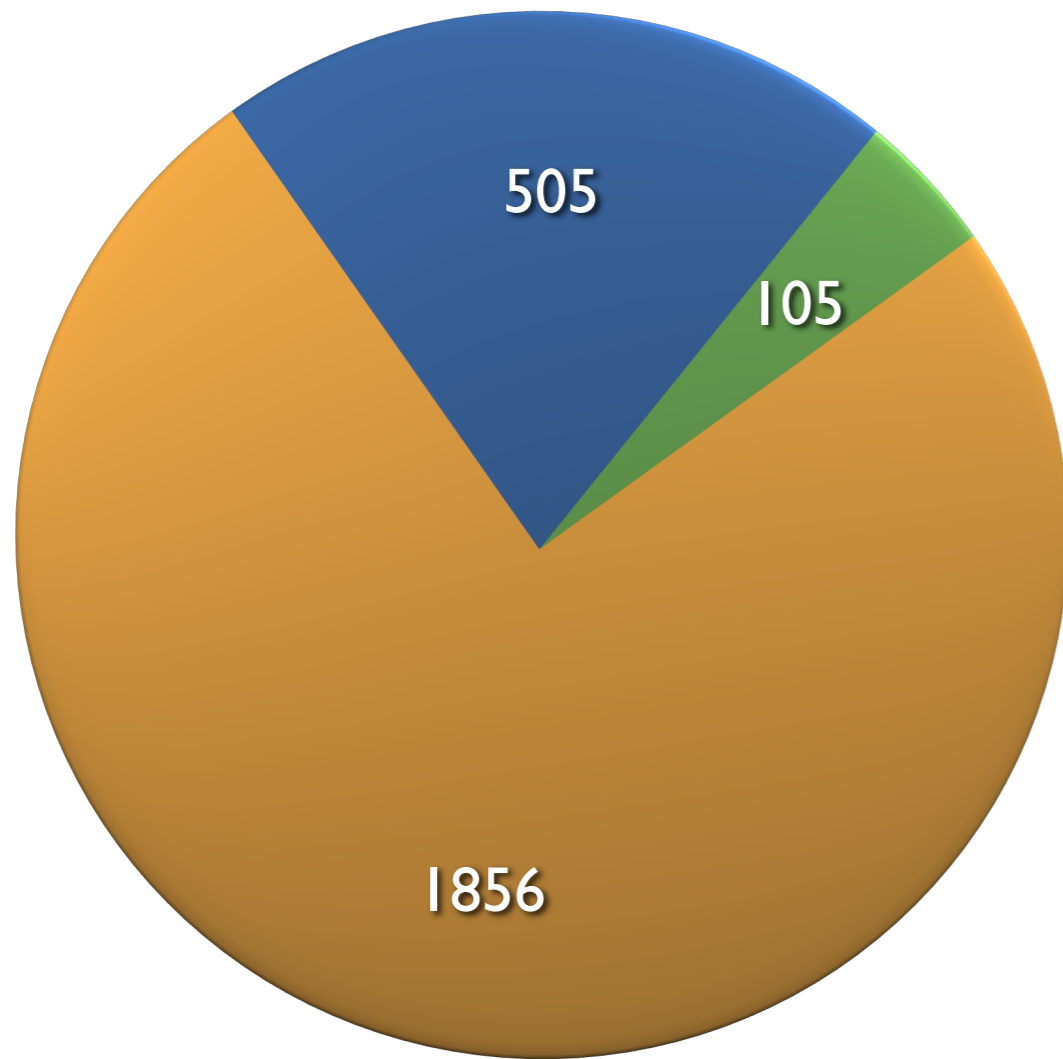
Alachua County



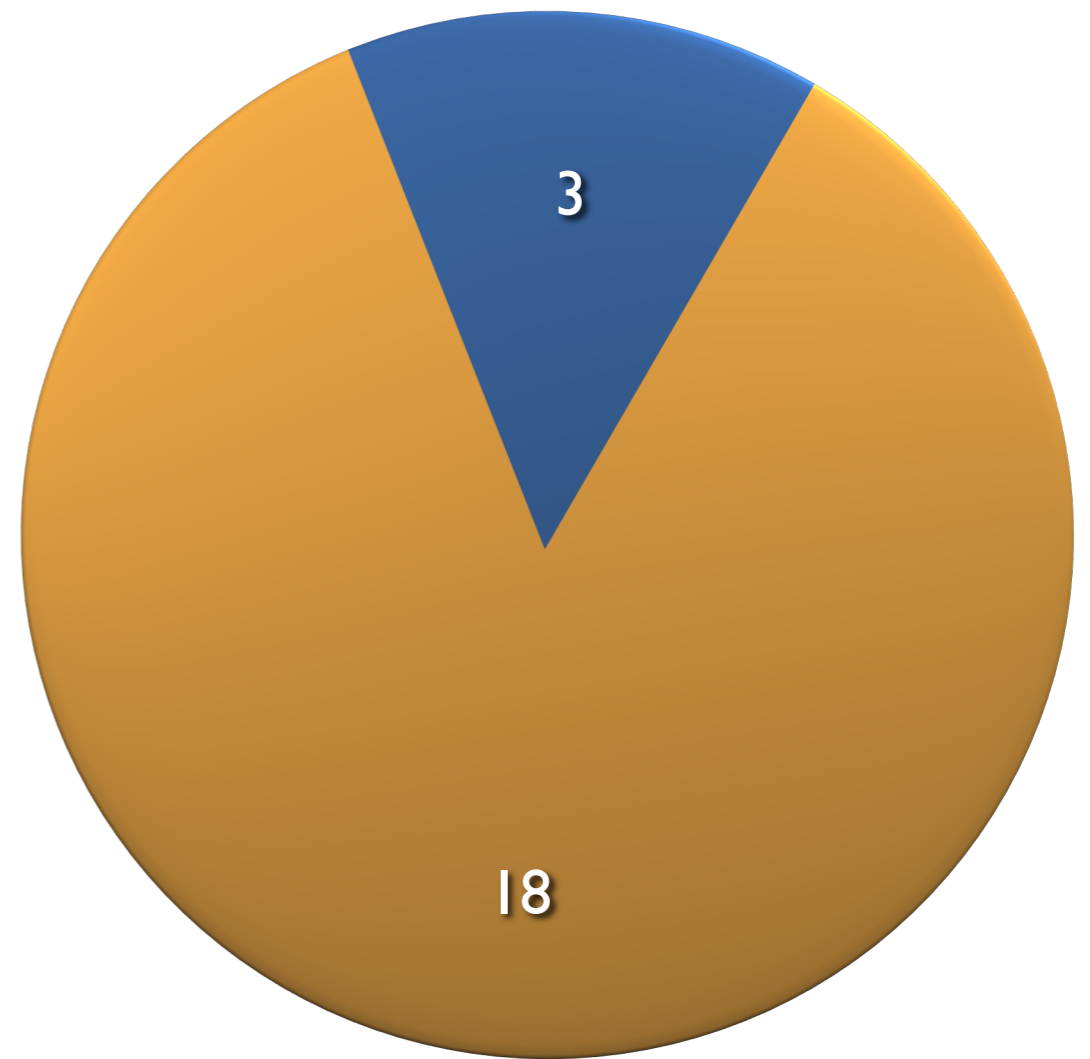
-  Homicide
-  Suicide
-  Traffic
-  Unintentional (but not traffic)

Who is dying in traffic?

Florida



Alachua County



-  Pedestrians
-  Bicyclists
-  Automobile drivers and passengers

Commission and staff have prioritized issue

Details Reports

120542. Version: 1
Discussion Item

Name:
Status:
In control:
Final action:

11/7/2012
11/1/2012

Signage and Pavement Marking Improvements for Pedestrian

History (1) Text

Title
Signage and Pavement Marking Improvements for Pedestrian Safety (NB)

Explanation
This referral was brought forward by Commissioner Thomas Hawkins.

Recommendation:
The City Commission refer to the Recreation, Cultural Affairs and P the issue of improvements to signage and pavement markings to e

STRATEGIC INITIATIVE # 6.2

Legistar #

GOAL # 6: NEIGHBORHOODS
Improve the quality of life in our neighborhoods for the benefit of all residents

INITIATIVE 6.2: ASSESS NEIGHBORHOODS TO DETERMINE NEED FOR INFRASTRUCTURE IMPROVEMENTS FOR BICYCLE AND PEDESTRIAN USE

Champion: Debbie Leistner, Transportation Planning Manager

Sponsor: Randy Wells, Commissioner (District IV)

Committee: Recreation, Cultural Affairs & Public Works Committee

Stakeholders: Public, Neighborhoods, University of Florida (UF), Alachua County School Board, Community Redevelopment Agency (CRA), Bicycle and Pedestrian Advisory Board (BPAB)

Desired Outcome: Adequate facilities are provided to accommodate bicycle and pedestrian use reducing automobile dependency and increasing accessibility and mobility options to all users of the transportation system.

Background: This Strategic Initiative was first introduced by the City Commission in June, 2010 at a Strategic Planning Retreat. The Initiative was later adopted and added to the Strategic Plan on August 5, 2010.

Progress to Date:

In FY 2011, the City Commission established the target area for increased efforts in the provision of multimodal facilities, targeting completion of sidewalk network, infill of existing gaps and standards. Staff

Solutions

- Education

- Western Michigan University study
- Bicycle/Pedestrian Coordinator
- signage

- Enforcement

- Western Michigan University study

- Engineering

- sidewalks
- bicycle lanes
- smart bus bays
- crosswalks
- signage
- pedestrian activated signals

Limiting factor is funding

As part of discussions on existing referrals related to bicyclist and pedestrian safety, the Recreation, Cultural Affairs and Public Works Committee develop a recommendation for City Commission to increase budget to make our roads safer.