



Planning and Development Services

22LUC-08PB

62ZON-08PB

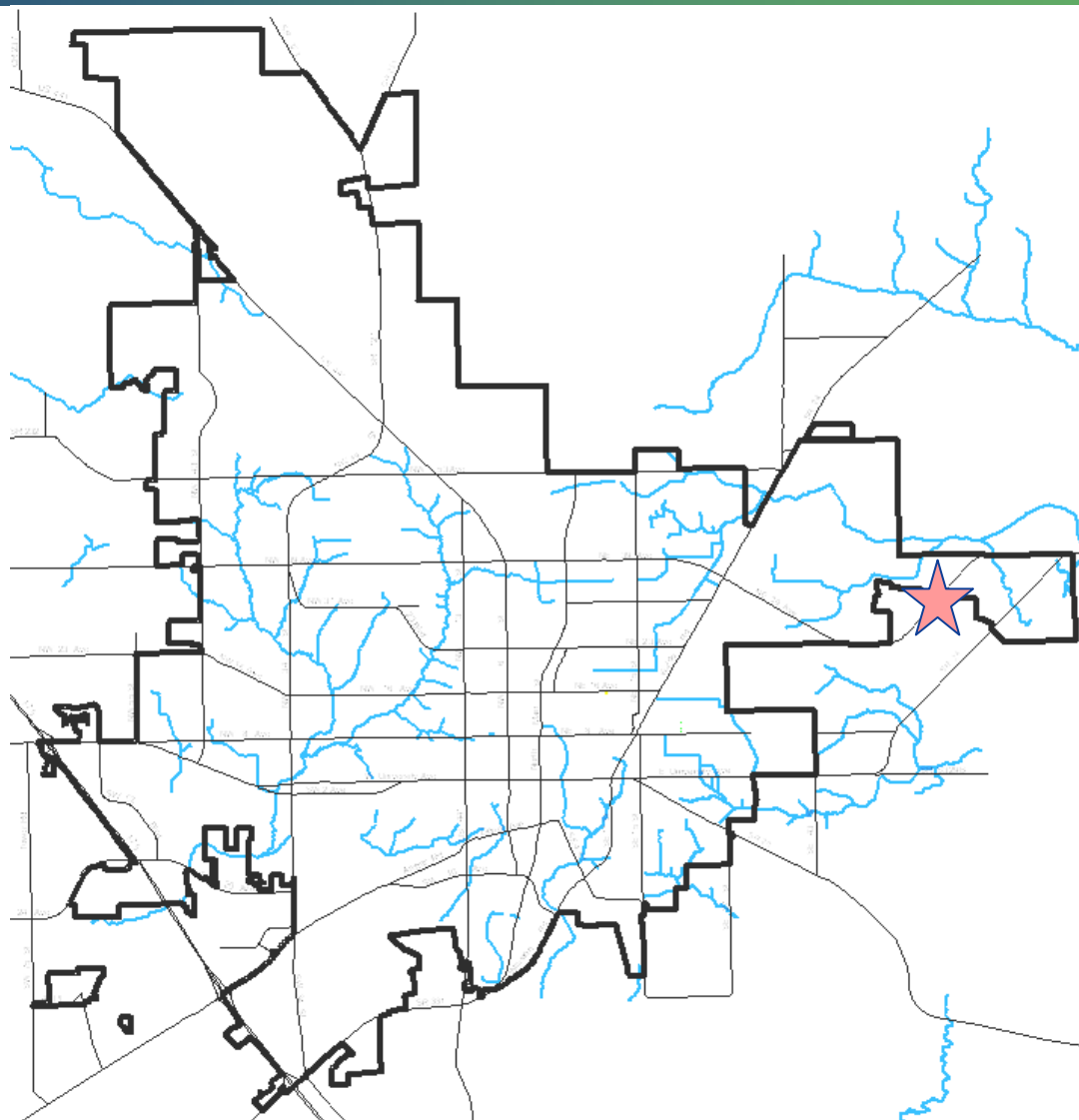
Susan Bridges Niemann

August 11, 2008

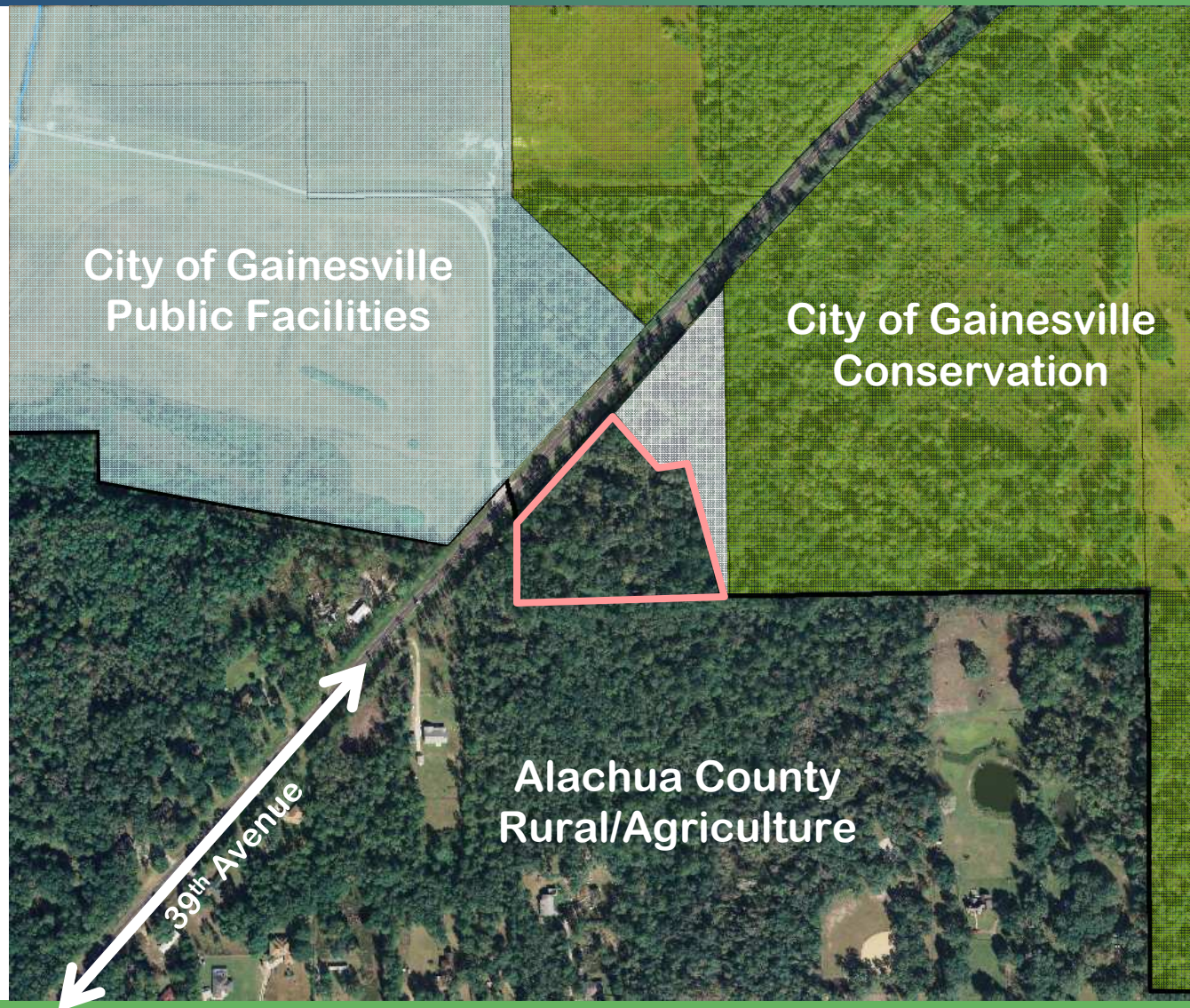
Petition Summary

- **Property was annexed in 2007**
- **Vacant, City-owned land near Gum Root Park**
- **Land Use request: Conservation**
- **Zoning request: Conservation (CON)**
- **City Plan Board recommended approval by a vote of 7-0**
- **Staff recommends approval**

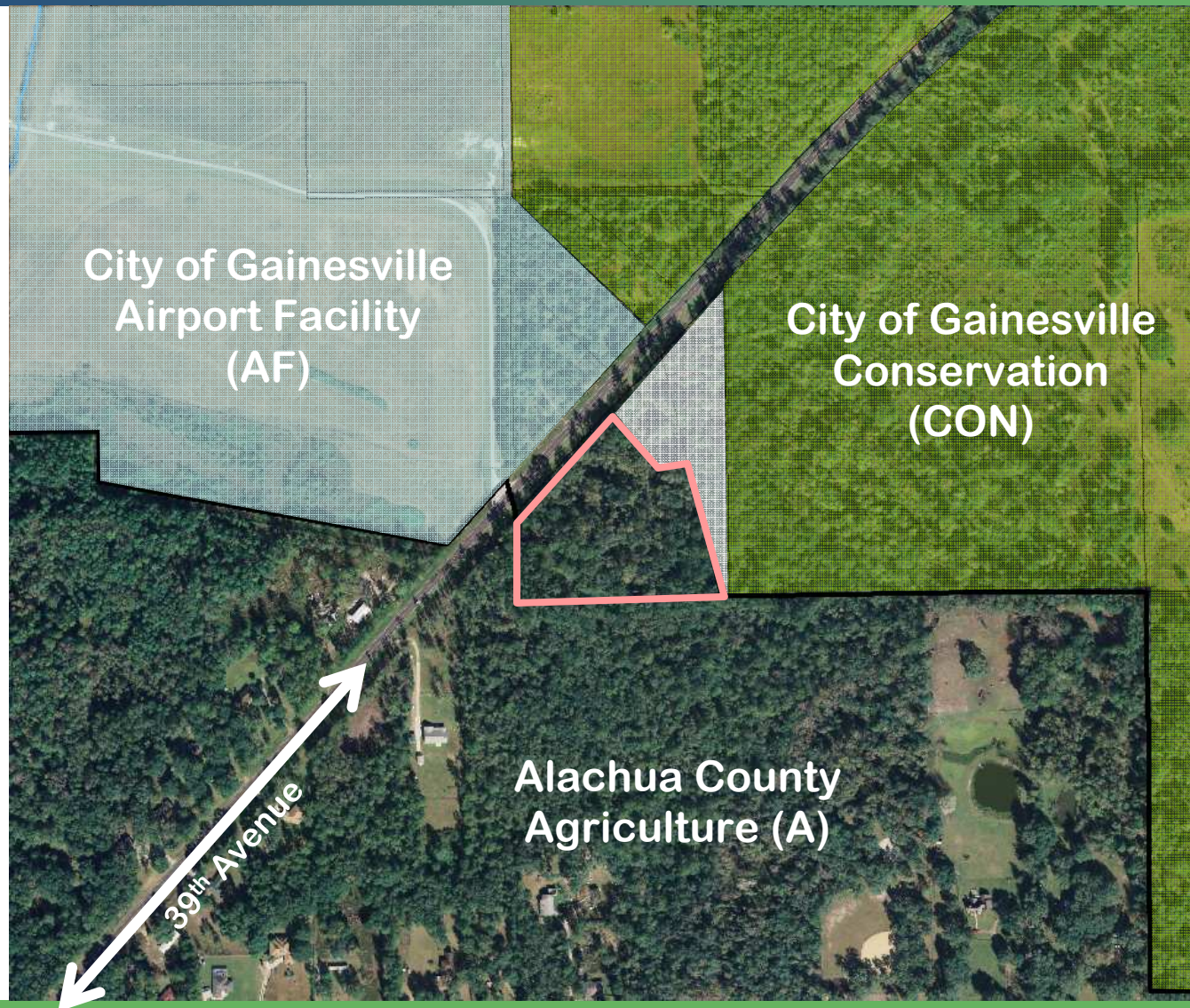
Parcel Location



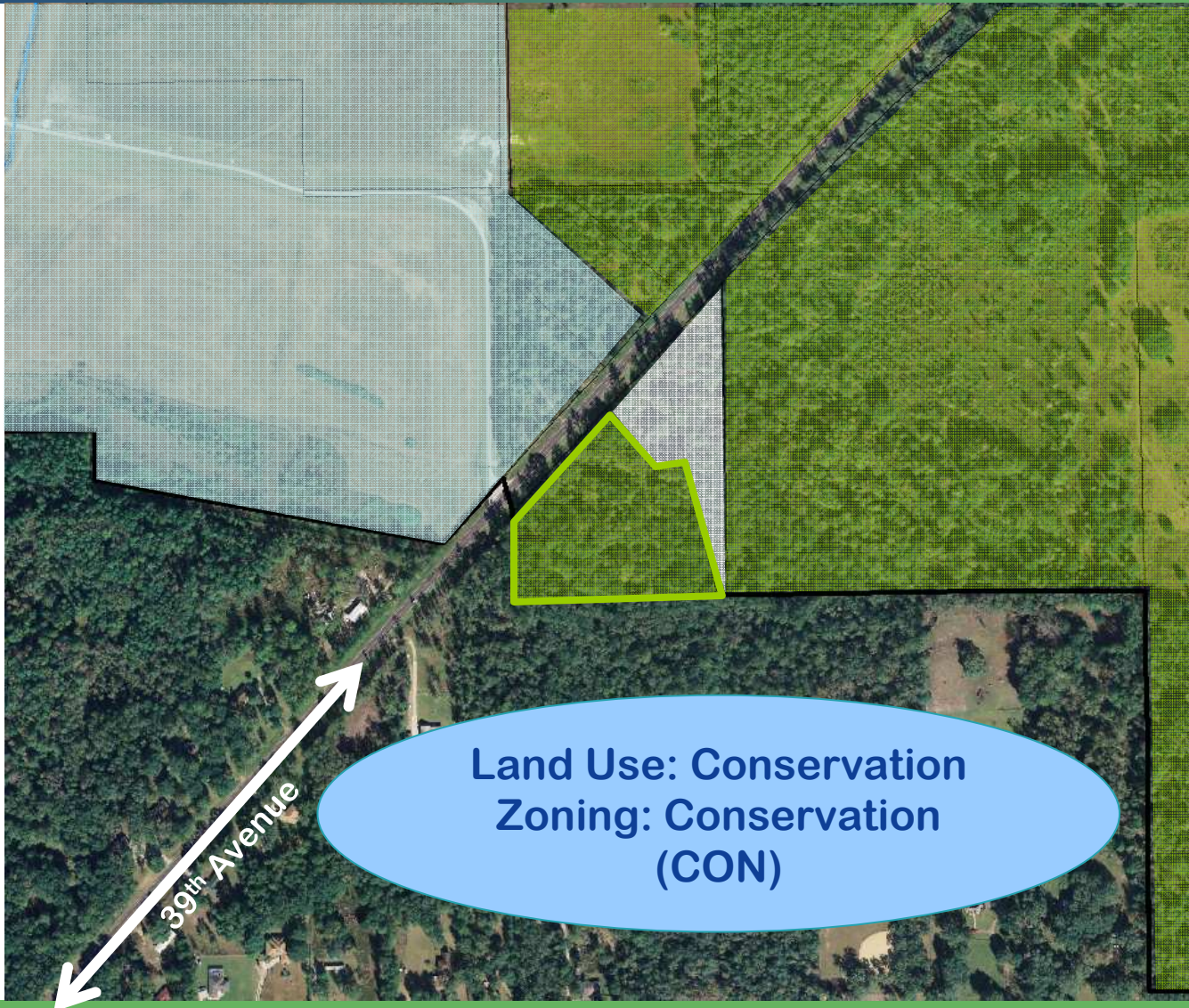
Existing Land Use



Existing Zoning



Proposed Land Use & Zoning



Summary

	Existing (Alachua County)	Proposed (City of Gainesville)
22LUC-08PB	Rural/Agriculture	Conservation
62ZON-08PB	Agriculture (A)	Conservation (CON)