



## ADDENDUM NO. 4

Date: June 27, 2018

Bid Date: July 2, 2018  
at 3:00 P.M. (Local Time)

Bid Name SW 40<sup>th</sup> Extension and SW 47<sup>th</sup> Ave Trail

Bid No.: WSPP-180086-DM

**NOTE:** This Addendum has been issued only to the holders of record of the specifications and to the attendees of the non-mandatory pre-bid conference held on June 12, 2018.

The original Specifications remain in full force and effect except as revised by the following changes which shall take precedence over anything to the contrary:

1. The deadline for questions was June 19, 2018.
2. Please find attached:
  - a) Copy of the blackout period information (Financial Procedures Manual Section 41-423 Prohibition of lobbying in procurement matters)) distributed during mandatory pre-bid meeting.
  - b) Revised Bid Form
  - c) Updated utility work schedule from GRU Electric
  - d) Spreadsheet for Bidders (Uploaded to Demandstar as a separate document)

The following are answers/clarifications to questions received after the non-mandatory pre-bid conference:

3. **Question:** Are you going to issue a revised bid form / spreadsheet since a bit item changed and one was added in addendum 3? Still haven't seen the revised GRU Utility work schedule

**Answer:** Yes. Please see the attached revised bid form (PDF) as well as an updated excel spreadsheet. The revised bid form reflects the addition of Pay item 0520 70 Concrete Traffic Separator, Special – Variable Width with a Plan Quantity of 168 SY as well as the replacement of Pay item 0104 12 “Staked Turbidity Barrier” with Pay item 0104 10 “Sediment Barrier”. Cells that have changed are highlighted in green.

Please see the attached revised utility work schedule from GRU Electric.

ACKNOWLEDGMENT: Each Proposer shall acknowledge receipt of this Addendum No. 4 by his or her signature below, **and a copy of this Addendum to be returned with proposal.**

CERTIFICATION BY PROPOSER

The undersigned acknowledges receipt of this Addendum No. 4 and the Proposal submitted is in accordance with information, instructions, and stipulations set forth herein.

PROPOSER: \_\_\_\_\_

BY: \_\_\_\_\_

DATE: \_\_\_\_\_

CITY OF \_\_\_\_\_ FINANCIAL SERVICES  
GAINESVILLE PROCEDURES MANUAL

**41-423      Prohibition of lobbying in procurement matters**

Except as expressly set forth in Resolution 060732, Section 10, during the black out period as defined herein no person may lobby, on behalf of a competing party in a particular procurement process, City Officials or employees except the purchasing division, the purchasing designated staff contact. Violation of this provision shall result in disqualification of the party on whose behalf the lobbying occurred.

Black out period means the period between the issue date which allows for immediate submittals to the City of Gainesville Purchasing Department for an invitation for bid or the request for proposal, or qualifications, or information, or the invitation to negotiate, as applicable, and the time the City Officials and Employee awards the contract.

Lobbying means when any natural person for compensation, seeks to influence the governmental decision making, to encourage the passage, defeat, or modification of any proposal, recommendation or decision by City Officials and Employees, except as authorized by procurement documents.

**BID FORM**

**SW 40<sup>th</sup> Blvd Extension (SW 47<sup>th</sup> Ave – Archer Rd) & SW 47<sup>th</sup> Ave Multiuse Trail (SW 40<sup>th</sup> Blvd – SW 34<sup>th</sup> St)**

## TABLE OF CONTENTS

	<b>Page</b>
ARTICLE 1 – Bid Recipient .....	1
ARTICLE 2 – Bidder’s Acknowledgements.....	1
ARTICLE 3 – Bidder’s Representations .....	1
ARTICLE 4 – Bidder’s Certification.....	2
ARTICLE 5 – Basis of Bid .....	3
ARTICLE 6 – Time of Completion.....	7
ARTICLE 7 – Attachments to this Bid.....	8
ARTICLE 8 – Defined Terms.....	8
ARTICLE 9 – Bid Submittal.....	8

**ARTICLE 1 – BID RECIPIENT**

1.01 This Bid is submitted to:

**City of Gainesville**  
**200 East University Avenue, Room 339 – Gainesville, Florida 32601**

1.02 The undersigned Bidder proposes and agrees, if this Bid is accepted, to enter into an Agreement with Owner in the form included in the Bidding Documents to perform all Work as specified or indicated in the Bidding Documents for the prices and within the times indicated in this Bid and in accordance with the other terms and conditions of the Bidding Documents.

**ARTICLE 2 – BIDDER’S ACKNOWLEDGEMENTS**

2.01 Bidder accepts all of the terms and conditions of the Instructions to Bidders, including without limitation those dealing with the disposition of Bid security. This Bid will remain subject to acceptance for 60 days after the Bid opening, or for such longer period of time that Bidder may agree to in writing upon request of Owner.

**ARTICLE 3 – BIDDER’S REPRESENTATIONS**

3.01 In submitting this Bid, Bidder represents that:

- A. Bidder has examined and carefully studied the Bidding Documents, and any data and reference items identified in the Bidding Documents, and hereby acknowledges receipt of the following Addenda:

<u>Addendum No.</u>	<u>Addendum, Date</u>

- B. Bidder has visited the Site, conducted a thorough, alert visual examination of the Site and adjacent areas, and become familiar with and satisfied itself as to the general, local, and Site conditions that may affect cost, progress, and performance of the Work.
- C. Bidder is familiar with and has satisfied itself as to all Laws and Regulations that may affect cost, progress, and performance of the Work.
- D. Bidder has carefully studied all: (1) reports of explorations and tests of subsurface conditions at or adjacent to the Site and all drawings of physical conditions relating to existing surface or subsurface structures at the Site that have been identified in the Instructions to Bidders, especially with respect to Technical Data in such reports and drawings
- E. Bidder has considered the information known to Bidder itself; information commonly known to contractors doing business in the locality of the Site; information and observations obtained from visits to the Site; the Bidding Documents; and any Site-related reports and drawings identified in the Bidding Documents, with respect to the effect of such information, observations, and documents on (1) the cost, progress, and performance of the Work; (2)

the means, methods, techniques, sequences, and procedures of construction to be employed by Bidder; and (3) Bidder's safety precautions and programs.

- F. Bidder agrees, based on the information and observations referred to in the preceding paragraph, that no further examinations, investigations, explorations, tests, studies, or data are necessary for the determination of this Bid for performance of the Work at the price bid and within the times required, and in accordance with the other terms and conditions of the Bidding Documents.
- G. Bidder is aware of the general nature of work to be performed by Owner and others at the Site that relates to the Work as indicated in the Bidding Documents.
- H. Bidder has given Project Manager written notice of all conflicts, errors, ambiguities, or discrepancies that Bidder has discovered in the Bidding Documents, and confirms that the written resolution thereof by Project Manager acceptable to Bidder.
- I. The Bidding Documents are generally sufficient to indicate and convey understanding of all terms and conditions for the performance and furnishing of the Work.
- J. The submission of this Bid constitutes an incontrovertible representation by Bidder that Bidder has complied with every requirement of this Article, and that without exception the Bid and all prices in the Bid are premised upon performing and furnishing the Work required by the Bidding Documents.

#### **ARTICLE 4 – BIDDER'S CERTIFICATION**

##### 4.01 Bidder certifies that:

- A. This Bid is genuine and not made in the interest of or on behalf of any undisclosed individual or entity and is not submitted in conformity with any collusive agreement or rules of any group, association, organization, or corporation;
- B. Bidder has not directly or indirectly induced or solicited any other Bidder to submit a false or sham Bid;
- C. Bidder has not solicited or induced any individual or entity to refrain from bidding; and
- D. Bidder has not engaged in corrupt, fraudulent, collusive, or coercive practices in competing for the Contract. For the purposes of this Paragraph 4.01.D:
  - 1. "corrupt practice" means the offering, giving, receiving, or soliciting of anything of value likely to influence the action of a public official in the bidding process;
  - 2. "fraudulent practice" means an intentional misrepresentation of facts made (a) to influence the bidding process to the detriment of Owner, (b) to establish bid prices at artificial non-competitive levels, or (c) to deprive Owner of the benefits of free and open competition;
  - 3. "collusive practice" means a scheme or arrangement between two or more Bidders, with or without the knowledge of Owner, a purpose of which is to establish bid prices at artificial, non-competitive levels; and
  - 4. "coercive practice" means harming or threatening to harm, directly or indirectly, persons or their property to influence their participation in the bidding process or affect the execution of the Contract.

**ARTICLE 5 – BASIS OF BID**

5.01 Bidder will complete the Work in accordance with the Contract Documents for the following price(s):

**SW 40th Blvd Extension (SW 47th Ave – Archer Rd)**

ITEM NO.	DESCRIPTION	UNIT	ESTIMATED QUANTITY	UNIT PRICE	EXTENDED PRICE
<b>ROADWAY</b>					
0101 1	Mobilization	LS	1		
0102 1 1	Maintenance of Traffic	ED	183		
0102 60	Work Zone Sign	ED	1080		
0102 74 2	Channelizing Device, Type III, 6'	ED	2160		
0104 10	Sediment Barrier	LF	9646		
0104 13 1	Construction Fence (Tree Barricade)	LF	931		
0104 15	Soil Tracking Prevention Device	EA	2		
0104 18	Inlet Protection System	EA	32		
0110 1 1	Clearing & Grubbing	AC	11.7		
0110 1 2	Miscellaneous Demolition	LS	1		
0110 4 10	Removal of Existing Concrete Pavement	SY	1620		
0120 1	Regular Excavation	CY	10508		
0120 4	Subsoil Excavation (Muck Removal)	CY	1920		
0120 6	Embankment	CY	32677		
0120 *	Embankment (Select Backfill)	CY	500		
0145 2	Geosynthetic Reinforced Foundations (Stabilized Path)	SY	2981		
0160 4	Type B Stabilization (Trail)	SY	3300		
0160 4	Type B Stabilization (Roadway)	SY	14268		
0160 5	Type B Stabilization/No. 57 Stone Mix (Stabilized Path)	SY	2981		
0162 1 11	Prepared Soil Layer, Finish Soil Layer, 6"	SY	37259		
0210 1 9	Reworking Limerock Base, 3" (Existing Driveway)	SY	117		
0285 704	Optional Base Group 4 (6" Limerock LBR 100) (Trail)	SY	2523		
0285 706	Optional Base Group 6 (8" Limerock LBR 100) (Roadway)	SY	12673		
0327 70 6	Milling Existing Asphalt Pavement, 1 1/2" Avg. Depth	SY	1519		
0334 1 13	Superpave Asphaltic Conc, Traffic C, SP- 9.5 (Trail)	TN	193		
0334 1 13	Superpave Asphaltic Conc, Traffic C, SP- 12.5 (Roadway)	TN	1014		
0337 7 42	Superpave Asphaltic Conc, Traffic C, FC- 9.5 (Roadway)	TN	1141		
0350 3 5	Plain Cement Concrete Pavement (Roundabout), 8"	SY	332		
0400 0 11	Concrete Class NS, Gravity Wall	CY	18.75		



0400 1 2	Class I Concrete (Endwalls) FDOT Index No. 250	CY	1.23		
0425 1331	Inlets, Curb, Type P-3, < 10'	EA	2		
0425 1341	Inlets, Curb, Type P-4, < 10'	EA	1		
0425 1521 1	Inlets, Dt Bot, Type C, < 10'	EA	2		
0425 1521 2	Inlets, Dt Bot, Type C, Double Traversable Slots, < 10', Index No. 232	EA	6		
0425 1910 1	Inlet, Closed Flume, Single Barrel (Index No. 216)	EA	3		
0425 1910 2	Inlet, Closed Flume, Double Barrel (Index No. 216)	EA	2		
0425 2 61	Manholes, P-8, < 10'	EA	6		
0425 2 91 1	Manholes, J-8, < 10' w/ Top Slab, 42"x114" (Index No. 200)	EA	1		
0425 2 91 2	Manholes, J-8, < 10' w/ Top Slab and Frame, 42"x114" (Index No. 200 & 201)	EA	1		
0425 2 91 3	Manholes, J-8, < 10' w/ Top Slab and Frame, 114"x150" (Index No. 200 & 201)	EA	1		
0425 5 1	Manhole, Adjust, Utilities	EA	1		
0430 175 115	Pipe Culvert, Round, 15" S/CD	LF	324		
0430 175 118	Pipe Culvert, Round, 18" S/CD	LF	832		
0430 175 124	Pipe Culvert, Round, 24" S/CD	LF	474		
0430 175 130	Pipe Culvert, Round, 30" S/CD	LF	993		
0430 200 25	FES, RCP, Round, 24" SD (Index No. 270)	EA	2		
0430 610	U-Endwall, RCP, Round, 15" SD (Index No. 260)	LF	1		
0430 611	U-Endwall, RCP, Round, 18" SD (Index No. 260)	LF	2		
0430 982 125	MES, RCP, Round, 18" SD (Index No. 272)	EA	3		
0430 982 133	MES, RCP, Round, Triple, 30" SD (Index No. 272)	EA	3		
0455 133 3	Sheet Piling Steel, F&I Permanent	SF	3425		
0519 78	Bollards	EA	12		
0520 1 10	Concrete Curb & Gutter, Type F	LF	2370		
0520 2 4	Concrete Curb, Type D	LF	245		
0520 2 5	Concrete Curb, Ribbon Curb	LF	740		
0520 2 6	Sidewalk Curb	LF	65		
0520 2 8	Concrete Curb & Gutter, Type RA	LF	223		
0520 70	Concrete Traffic Separator, Special – Variable Width	SY	168		
0522 1	Concrete Sidewalk, 4" Thick	SY	1948		
0522 2	Concrete Sidewalk & Driveway, 6" Thick	SY	198		

0524 2 2	Concrete Slope Pavement, 4" NR (Weirs at SMF-1, Conc. at S-15 & S-16 )	SY	258		
0527 2 1	Detectable Warnings, Brick Pavers	SF	293		
0530 3 3	Riprap-Rubble, Bank and Shore (2.5' thickness)	TN	239		
0530 74	Bedding Stone (under Riprap, 1' thickness))	TN	85		
0570 1 1	Performance Turf, Seed & Mulch	SY	11709		
0570 1 2	Performance Turf, Sod	SY	25550		
<b>SIGNING &amp; PAVEMENT MARKING</b>					
0700 1 11	Single Post Sign, F&I, Less Than 12 SF	AS	51		
0706 3	Retro-Reflective Pavement Markers	EA	100		
0711 11111	Thermoplastic, STD, White, Solid, 6"	LF	11261		
0711 11123	Thermoplastic, STD, White, Solid, 12"	LF	382		
0711 11125	Thermoplastic, STD, White, Solid, 24"	LF	170		
0711 11142	Thermoplastic, STD, White, Dotted Guide, 6" (2' - 4')	LF	1569		
0711 11160	Thermoplastic, STD, White, Messages	EA	11		
0711 11170	Thermoplastic, STD, White, Arrows	EA	12		
0711 11180	Thermoplastic, STD, White, Yield Line	LF	25		
0711 11211	Thermoplastic, STD, Yellow, Solid, 6"	LF	7993		
0711 11224	Thermoplastic, STD, Yellow, Solid, 18"	LF	108		
<b>WATER MAIN EXTENSION</b>					
1050 51212	Ductile Iron Pipe, F&I, 12"	LF	494		
1055 11414	Utility Fittings, DI F&I Elbow, 12"	EA	2		
1080 24112	Utility Fixture, Valve Assembly, F&I, 12"	EA	1		
1080 26106	Utility Fixture, Vac/Air Assembly, F&I, 6" (Blowoff Assembly)	EA	1		
<b>LIGHTING</b>					
1050 31202	Utility Pipe - SCH 40 PVC, F&I, 1.5"	LF	3695		
1050 31203	Utility Pipe - SCH 40 PVC, F&I, 2.5"	EA	195		
0635 1	10" Dia Handhole	EA	27		

0635 2 12	17"x31" UD Service Enclosure	EA	2		
0639 1122	Electrical Power Srv, F&I, UG, Pur Cont (Billboard)	AS	1		
<b>SW 40<sup>th</sup> Blvd Extension (SW 47<sup>th</sup> Ave – Archer Rd)</b>				<b>Total:</b>	

**SW 47th Ave Multiuse Trail (SW 40th Blvd – SW 34th St)**

ITEM NO.	DESCRIPTION	UNIT	ESTIMATED QUANTITY	UNIT PRICE	EXTENDED PRICE
<b>TRAIL</b>					
0101 1	Mobilization	LS	1		
0102 1 1	Maintenance of Traffic (include Work Zone Signs, Barricades, etc.)	LS	1		
0104 10	Sediment Barrier	LF	1644		
0104 13	Construction Fence (Tree Barricade)	LF	20		
0104 18	Inlet Protection System	EA	2		
0110 1 1	Clearing & Grubbing	LS	1		
0110 1	Miscellaneous Demolition	LS	1		
0110 4 1	Removal of Existing Concrete Pavement	SY	122		
0110 4 2	Removal of Existing Asphalt Pavement and Base	SY	741		
0120 1	Regular Excavation	CY	278		
0120 6	Embankment	CY	193		
0160 4	Type B Stabilization	SY	2203		
0285 704	Optional Base Group 4 (6" Limerock LBR 100) (Trail)	SY	1565		
0285 706	Optional Base Group 6 (8" Limerock LBR 100) (Driveway Crossings)	SY	780		
0334 1 13	Superpave Asphaltic Conc, Traffic C, SP-9.5 (Surface Course)	TN	182		
0334 1 13	Superpave Asphaltic Conc, Traffic C, SP-12.5 (Structural Course)	TN	61		
0350 3 5	Plain Cement Concrete Pavement, 8"	SY	12		
0400 0 11	Concrete Class NS, Gravity Wall	CY	145		
0430 175 118	Pipe Culvert, Round, 18" S/CD	LF	64		
0430 982 125	MES, RCP, Round, 18" CD (Index No. 272)	EA	1		
0515 2311	Ped/Bicycle Railing, ALUM, 42" TYPE 1	LF	428		
0425 1561	Inlets, Dt Bot, Type F, < 10'	EA	1		
0520 1 10	Concrete Curb & Gutter, Type F	LF	131		
0520 2 4	Concrete Curb, Type D	LF	29		
0522 1	Concrete Sidewalk, 4" Thick	SY	147		
0522 2	Concrete Sidewalk & Driveway, 6" Thick	SY	100		
0524 2 2	Concrete Slope Pavement, 4" NR	SY	24		
0527 2	Detectable Warnings, Mat	SF	23		
0527 2 1	Detectable Warnings, Brick Pavers	SF	226		

0530 3 3	Riprap-Rubble, Bank and Shore (2.5' thickness)	TN	16		
0530 74	Bedding Stone (under Riprap, 1' thickness)	TN	6		
0570 1 2	Performance Turf, Sod	SY	2800		
<b>SIGNING &amp; PAVEMENT MARKING</b>					
0654 2 22	Rect Rapid Flash Beacon, F&I SOL, BB SIGN	EA	2		
0700 1 11	Single Post Sign, F&I, Less Than 12 SF	AS	21		
0700 1 50	Single Post Sign, Relocate	AS	1		
0711 11123	Thermoplastic, STD, White, Solid, 12"	LF	503		
0711 11211	Thermoplastic, STD, Yellow, Solid, 6"	LF	50		
0711 11125	Thermoplastic, STD, White, Solid, 24"	LF	117		
<b>TRAIL LIGHTING CONDUIT</b>					
1050 31202	Utility Pipe - SCH 40 PVC, F&I, 1.5"	LF	1700		
0635 1	10" Dia Handhole	EA	12		
0635 2 12	17"x31" UD Service Enclosure	EA	1		
<b>SW 47th Ave Multiuse Trail (SW 40th Blvd – SW 34th St)</b>				<b>Total:</b>	

**Combined Total:**\$ 

Total number of calendar days to substantially complete the Work: 240 days.

Liquidated Damages Rate (from Agreement): \$ 2,811 /day.

Bonds required under Paragraph 6.01 of the General Conditions will be based on the Contract Price.

#### ARTICLE 6 – TIME OF COMPLETION

6.01 Bidder agrees that the Work will be substantially complete within 240 calendar days after the date when the Contract Times commence to run as provided in Paragraph 4.01 of the General Conditions, and will be completed and ready for final payment in accordance with Paragraph 15.06 of the General Conditions within 270 calendar days after the date when the Contract Times commence to run.

6.02 Bidder accepts the provisions of the Agreement as to liquidated damages.

**ARTICLE 7 – ATTACHMENTS TO THIS BID**

- 7.01 The following documents are submitted with and made a condition of this Bid:
- A. Bidder Qualifications Statement
  - B. Evidence of authority for individuals listed in Section 6 of the Qualifications Statement to bind organization to an agreement
  - C. Evidence of Bidder’s authority to do business in the state where the Project is located
  - D. FDOT Certificate of Qualification with FDOT Approved Work Classes
  - E. Letter from Bonding Company; Evidence that Bidder can obtain a Payment and Performance Bond on the project if it is awarded the bid
  - F. Drug Free WorkPlace Form
  - G. Affidavit of Non-Collusion
  - H. Certification of Compliance with Living Wage

**ARTICLE 8 – DEFINED TERMS**

8.01 The terms used in this Bid with initial capital letters have the meanings stated in the Instructions to Bidders, and the General Conditions.

**ARTICLE 9 – BID SUBMITTAL**

BIDDER: *[Indicate correct name of bidding entity]*

\_\_\_\_\_

By:

*[Signature]* \_\_\_\_\_

*[Printed name]* \_\_\_\_\_

*(If Bidder is a corporation, a limited liability company, a partnership, or a joint venture, attach evidence of authority to sign.)*

Attest:

*[Signature]* \_\_\_\_\_

*[Printed name]* \_\_\_\_\_

Title: \_\_\_\_\_

Submittal Date: \_\_\_\_\_

Address for giving notices:

\_\_\_\_\_

\_\_\_\_\_

\_\_\_\_\_

---

Telephone Number: \_\_\_\_\_

Fax Number: \_\_\_\_\_

Contact Name and e-mail address: \_\_\_\_\_

\_\_\_\_\_

Bidder's License No.: \_\_\_\_\_

*(where applicable)*

*DRUG FREE WORKPLACE FORM*

*The undersigned vendor in accordance with Florida Statute 287.087 hereby certifies that*

\_\_\_\_\_ *does:*  
 (Name of Business)

- 1. Publish a statement notifying employees that the unlawful manufacture, distribution, dispensing, possession, or use of a controlled substance is prohibited in the workplace and specifying the actions that will be taken against employees for violations of such prohibition.*
- 2. Inform employees about the dangers of drug abuse in the workplace, the business's policy of maintaining a drug-free workplace, any available drug counseling, rehabilitation, and employee assistance programs, and the penalties that may be imposed upon employees for drug abuse violations.*
- 3. Give each employee engaged in providing the commodities or contractual services that are under bid a copy of the statement specified in subsection (1).*
- 4. In the statement specified in subsection (1), notify the employees that, as a condition of working on the commodities or contractual services that are under bid, the employee will abide by the terms of the statement and will notify the employer of any conviction of, or plea of guilty of nolo contendere to, any violation of Chapter 893, Florida Statutes, or of any controlled substance law of the United State or any state, for a violation occurring in the workplace no later than five (5) days after such conviction.*
- 5. Impose a sanction on, or require the satisfactory participation in a drug abuse assistance or rehabilitation program if such is available in the employee's community, by any employee who is so convicted.*
- 6. Make a good faith effort to continue to maintain a drug-free workplace through implementation of this section.*

*As the person authorized to sign the statement, I certify that this firm complies fully with the above requirements.*

\_\_\_\_\_  
*Bidder's Signature*

\_\_\_\_\_  
*Date*

CITY OF GAINESVILLE  
**AFFIDAVIT OF NON-COLLUSION**

I hereby swear (or affirm) under the penalty of perjury:

- (1) That I am the bidder (if the bidder is an individual), a partner of the bidder (if the bidder is a partnership), or an officer or employee of the bidding corporation with authority to sign on its behalf (if the bidder is a corporation);
- (2) That the attached bid or bids have been arrived at by the bidder independently, and have been submitted without collusion with, and without any agreement, understanding, or planned common course of action with any other vendor of materials, supplies, equipment, or services described in the invitation to bid, designed to limit independent bidding or competition.
- (3) That the contents of the bid or bids have not been communicated by the bidder or its employees or agents to any person not an employee or agent of the bidder or its surety on any bond furnished with the bid or bids; and
- (4) That I have fully informed myself regarding the accuracy of the statements made in this affidavit.

Signed: \_\_\_\_\_

Firm Name: \_\_\_\_\_

Subscribed and sworn to before me this \_\_\_\_\_ day of \_\_\_\_\_ 20\_\_\_\_\_

\_\_\_\_\_  
Notary Public

My Commission expires \_\_\_\_\_, 20\_\_\_\_\_.

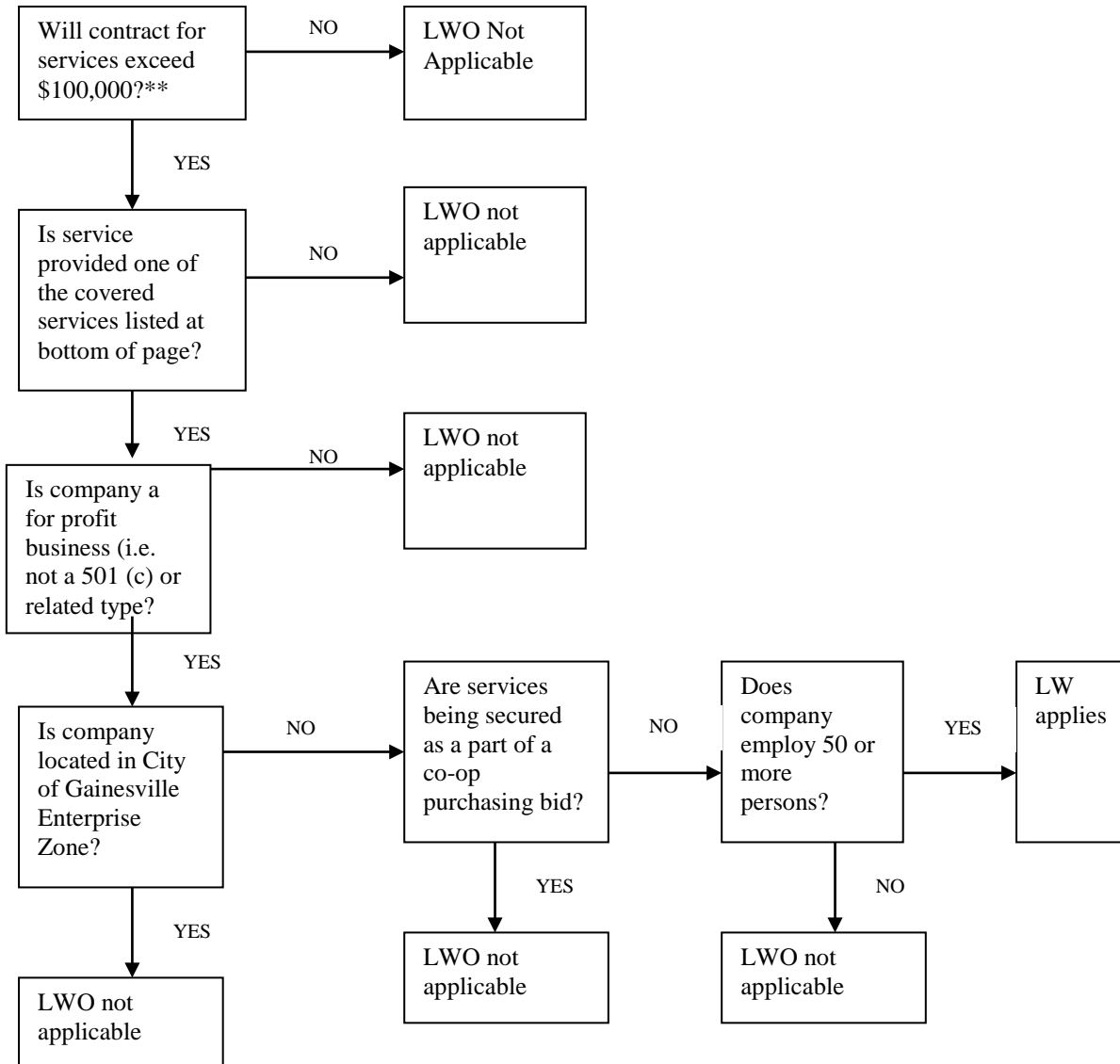
Proposer's E.I. Number: \_\_\_\_\_

(Number used on Employer's Quarterly Federal tax return)



## LIVING WAGE DECISION TREE

While not all encompassing, the following is provided as a guideline for contractors in determining whether the City of Gainesville Living Wage Ordinance applies to their firm in the performance of specified service contracts for covered services\* with the City. Contractors are advised to review the entire text of the Living Wage Ordinance in conjunction with this guideline.



**\*Covered Services:** food preparation and/or distribution; custodial/cleaning; refuse removal; maintenance and repair; recycling; parking services; painting/refinishing; printing and reproduction services; landscaping/grounds maintenance; agricultural/forestry services; and construction services  
**\*\*Total value of contract**

CITY OF GAINESVILLE

**CERTIFICATION OF COMPLIANCE WITH LIVING WAGE**

**The undersigned** hereby agrees to comply with the terms of the Living Wage Ordinance and to pay all covered employees, as defined by City of Gainesville Ordinance 020663 as amended at 030168 (Living Wage Ordinance), during the time they are directly involved in providing covered services under the contract with the City of Gainesville for SW 40<sup>th</sup> Blvd Extension (SW 47<sup>th</sup> Ave – Archer Rd) & SW 47<sup>th</sup> Ave Multiuse Trail (SW 40<sup>th</sup> Blvd – SW 34<sup>th</sup> St) a living wage of \$ 12.0673 per hour to covered employees who receive Health Benefits from the undersigned employer and \$ 13.3173 per hour to covered employees not offered health care benefits by the undersigned employer.

Name of Service Contractor/Subcontractor: \_\_\_\_\_

Address: \_\_\_\_\_

Phone Number: \_\_\_\_\_

Name of Local Contact Person \_\_\_\_\_

Address: \_\_\_\_\_

Phone Number: \_\_\_\_\_

\$ \_\_\_\_\_

(Amount of Contract)

Signature: \_\_\_\_\_ Date: \_\_\_\_\_

Printed Name: \_\_\_\_\_

Title: \_\_\_\_\_

# Utility Work Schedule

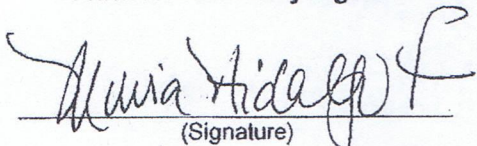
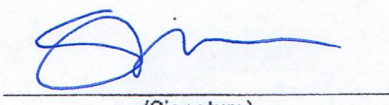
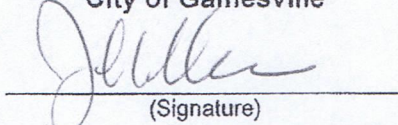
Project Description: SW 40 <sup>th</sup> Blvd Extension (SW 47 <sup>th</sup> Ave – Archer Road)	CITY OF GAINESVILLE
County: ALACHUA	
Document No.: 1	
Utility Agency/Owner (UAO): Gainesville Regional Utilities	

**A. Summary of Utility Work and Execution**

<u>NON CONSTRUCTION ITEMS</u>	<u>ESTIMATED CALENDAR DAYS</u>	<u>CONSTRUCTION ITEMS</u>	<u>ESTIMATED CALENDAR DAYS</u>
Total Preliminary		Total Prior to Project Construction	20
Total Material Procurement		Total During Project Construction	170
Total Right-of-Way Acquisition			
Total Other			

The Following data is based on preliminary construction plans dated December 11, 2017 (100%). Any deviation by the City or its contractor from the plans, as provided, may render this work schedule null and void. Upon notification by the City of such change, this utility may require additional days for assessment and negotiation of a new work schedule. This UAO is responsible for events beyond the control of the UAO that could not reasonably be anticipated by the UAO and which could not be avoided by the UAO with the exercise of due diligence at the time of the occurrence. The UAO agrees to notify the City in writing prior to starting, stopping, resuming, or completing work.

UAO Project Representative:	MILVIA HIDALGO AND/OR KEITH WHEELER	Telephone Number:	352 334 6047 352 334 6023
UAO Field Representative:	GARY SUTTON	Telephone Number:	352 334 6084

<p><b>Authorized Utility Agent:</b></p> <div style="text-align: center;">               _____              (Signature)         </div> <div style="text-align: center;">             MILVIA HIDALGO              _____              (Printed Name)         </div> <div style="text-align: center;">             UTILITY DESIGN ENGINEER IV              _____              (Title)         </div> <div style="text-align: center;">             6/26/18              _____              (Date)         </div>	<p><b>Engineer of Record(EOR):</b></p> <div style="text-align: center;">               _____              (Signature)         </div> <div style="text-align: center;">             Shawn D. Webber, P.E.              _____              (Printed Name)         </div> <div style="text-align: center;">             Engineer of Record              _____              (Title)         </div> <div style="text-align: center;">             6/26/18              _____              (Date)         </div>	<p><b>Acceptance by City of Gainesville</b></p> <div style="text-align: center;">               _____              (Signature)         </div> <div style="text-align: center;">             JOHN VEILLEUX              _____              (Printed Name)         </div> <div style="text-align: center;">             Project Manager              _____              (Title)         </div> <div style="text-align: center;">             6/26/18              _____              (Date)         </div>
---	---	---

## Utility Work Schedule

<b>Project Description:</b> SW 40 <sup>th</sup> Blvd Extension		<b>CITY OF GAINESVILLE</b>		
<b>County:</b> Alachua				
<b>Document No.:</b> 1				
<b>Utility Agency/Owner (UAO):</b> Gainesville Regional Utilities Electric Engineering				
<b>C.</b>	<b>Disposition of Facilities (List All Existing and Proposed) on Project</b>			
Utility Facilities By Status / Type/size/Material/Offset to Baseline From Sta. to Sta.	Description Of Utility Work	Dependent Activities	M.O.T. Phase Number	Consecutive Calendar Days
P#41700, 50'/3 wood pole Sta 112+51.25 off 55.97' R	Remove 50'/3 pole, replace with 50'/3 pole on stabilized (final) grade	To remain in service until new pole is installed; new pole location to be staked by City Contractor to guarantee proper installation away from curb	During Construction	5
Remove underground electric from P#41700 sta 112+51.25 to sta 113+51.08	De-energize and remove underground 120/240V electric wire to billboard sign, conduit to be placed out of service	To remain in service until new conduit is installed	During Construction	15
P#36999, 50'/3 wood pole sta 114+96.09 off 43.88' R	Remove 50'/3 pole, replace with 50'/3 pole on stabilized (final) grade	To remain in service until new pole is installed; new pole location to be staked by City Contractor to guarantee proper installation away from curb Final grade established by City Contractor	During Construction	5
P#36769, 50'/3 wood pole sta 117+45.63 off 43.23' R	Remove 50'/3 pole; replace with 50'/3 pole on stabilized (final) grade	To remain in service until new pole is installed; new pole location to be staked by City Contractor to guarantee proper installation away from curb.Final grade established by City Contractor	During Construction	5
P#48962, 50'/3 wood pole sta 119+95.42 off 46.23' R	Remove 50'/3 pole, replace with 50'/3 pole on stabilized (final) grade	To remain in service until new pole is installed; new pole location to be staked by City Contractor to guarantee proper installation away from curb. Final grade established by City Contractor	During Construction	5
Loc#1 35'/l concrete pole sta 501+50.31 off 28.33' L	Install 35'/l concrete pole + light(s) per Lighting Plans	New pole location to be staked by City Contractor to guarantee proper installation after final grade established by City Contractor	During Construction	5

## Utility Work Schedule

Loc#2 35'/l concrete pole sta 100+51.60 off 50.31' R /sta 500+30.51 off 62.63' L	Install 35'/l concrete pole + light(s) per Lighting Plans	New pole location to be staked by City Contractor to guarantee proper installation after final grade established by City Contractor	During Construction	5
Loc#3 35'/l concrete pole sta 500+39.42 off 53.88' R	Install 35'/l concrete pole + light(s) per Lighting Plans	New pole location to be staked by City Contractor to guarantee proper installation after final grade established by City Contractor	During Construction	5
Loc#4 35'/l concrete pole sta 100+26.68 off 57.54' L	Install 35'/l concrete pole + light(s) per Lighting Plans	New pole location to be staked by City Contractor to guarantee proper installation after final grade established by City Contractor	During Construction	5
Loc#5 35'/l concrete pole sta 101+61.17 off 27.90' R	Install 35'/l concrete pole + light(s) per Lighting Plans	New pole location to be staked by City Contractor to guarantee proper installation after final grade established by City Contractor	During Construction	5
Loc#6 35'/l concrete pole sta 103+00.15 off 22.33' L	Install 35'/l concrete pole + light(s) per Lighting Plans	New pole location to be staked by City Contractor to guarantee proper installation after final grade established by City Contractor	During Construction	5
Loc#7 35'/l concrete pole off 22.33' L	Install 35'/l concrete pole + light(s) per Lighting Plans	New pole location to be staked by City Contractor to guarantee proper installation after final grade established by City Contractor	During Construction	5
Loc #8 35'/l concrete pole off 22.33' L	Install 35'/l concrete pole + light(s) per Lighting Plans	New pole location to be staked by City Contractor to guarantee proper installation after final grade established by City Contractor	During Construction	5
Loc#9 35'/l concrete pole off 22.33' L	Install 35'/l concrete pole + light(s) per Lighting Plans	New pole location to be staked by City Contractor to guarantee proper installation after final grade established by City Contractor	During Construction	5

## Utility Work Schedule

Loc#10 35'/l concrete pole off 22.33' L	Install 35'/l concrete pole + light(s) per Lighting Plans	New pole location to be staked by City Contractor to guarantee proper installation after final grade established by City Contractor	During Construction	5
Loc#11 35'/l concrete pole off 22.33' L	Install 35'/l concrete pole + light(s) per Lighting Plans	New pole location to be staked by City Contractor to guarantee proper installation after final grade established by City Contractor	During Construction	5
Loc#12 35'/l concrete pole sta 112+00.43 off 22.33' R	Install 35'/l concrete pole + light(s) per Lighting Plans	New pole location to be staked by City Contractor to guarantee proper installation after final grade established by City Contractor	During Construction	5
Loc#13 35'/l concrete pole off 22.33' R	Install 35'/l concrete pole + light(s) per Lighting Plans	New pole location to be staked by City Contractor to guarantee proper installation after final grade established by City Contractor	During Construction	5
Loc#14 35'/l concrete pole off 22.33' R	Install 35'/l concrete pole + light(s) per Lighting Plans	New pole location to be staked by City Contractor to guarantee proper installation after final grade established by City Contractor	During Construction	5
Loc#15 35'/l concrete pole off 22.33' R	Install 35'/l concrete pole + light(s) per Lighting Plans	New pole location to be staked by City Contractor to guarantee proper installation after final grade established by City Contractor	During Construction	5
Loc#16 35'/l concrete pole off 22.33' R	Install 35'/l concrete pole + light(s) per Lighting Plans	New pole location to be staked by City Contractor to guarantee proper installation after final grade established by City Contractor	During Construction	5
Loc#17 35'/l concrete pole off 22.33' R	Install 35'/l concrete pole + light(s) per Lighting Plans	New pole location to be staked by City Contractor to guarantee proper installation after final grade established by City Contractor	During Construction	5

## Utility Work Schedule

Loc#18 35'/l concrete pole off 22.33' R	Install 35'/l concrete pole + light(s) per Lighting Plans	New pole location to be staked by City Contractor to guarantee proper installation after final grade established by City Contractor	During Construction	5
Loc#19 35'/l concrete pole off 27.11' R	Install 35'/l concrete pole + light(s) per Lighting Plans	New pole location to be staked by City Contractor to guarantee proper installation after final grade established by City Contractor	During Construction	5
Loc#20 35'/l concrete pole off 22.33' L	Install 35'/l concrete pole + light(s) per Lighting Plans	New pole location to be staked by City Contractor to guarantee proper installation after final grade established by City Contractor	During Construction	5
Loc#21 35'/l concrete pole off 22.33' L	Install 35'/l concrete pole + light(s) per Lighting Plans	New pole location to be staked by City Contractor to guarantee proper installation after final grade established by City Contractor	During Construction	5
Loc#22 35'/l concrete pole off 22.33' L	Install 35'/l concrete pole + light(s) per Lighting Plans	New pole location to be staked by City Contractor to guarantee proper installation after final grade established by City Contractor	During Construction	5
Loc#23 35'/l concrete pole off 22.33' L	Install 35'/l concrete pole + light(s) per Lighting Plans	New pole location to be staked by City Contractor to guarantee proper installation after final grade established by City Contractor	During Construction	5
Loc#24 35'/l concrete pole off 25.46' L	Install 35'/l concrete pole + light(s) per Lighting Plans	New pole location to be staked by City Contractor to guarantee proper installation after final grade established by City Contractor	During Construction	5
Loc#25 35'/l concrete pole off 24.51' L	Install 35'/l concrete pole + light(s) per Lighting Plans	New pole location to be staked by City Contractor to guarantee proper installation after final grade established by City Contractor	During Construction	5

## Utility Work Schedule

Loc#26 35'/l concrete pole off 32.70' R	Install 35'/l concrete pole + light(s) per Lighting Plans	New pole location to be staked by City Contractor to guarantee proper installation after final grade established by City Contractor	During Construction	5
Loc#27 35'/l concrete pole sta 132+24.19 off 30.73' R	Install 35'/l concrete pole + light(s) per Lighting Plans	New pole location to be staked by City Contractor to guarantee proper installation after final grade established by City Contractor	During Construction	5
Install Underground Electric wire within new conduit bank from sta 501+50.31 to sta 132+24.19	Install 120V underground electric within new conduit bank installed by City Contractor for streetlights as well as commercial service for billboard	Conduit bank and pedestal installation by City Contractor. Final grade established by City Contractor	During Construction	120
Transfer Overhead Electric wires from sta 112+51.25 to sta 119.95.42	Transfer overhead 12470V primary wire to new poles	New pole locations to be staked by City Contractor to guarantee proper installation from curb. Final grade established by City Contractor	To remain in service until new pole is installed	120
TRN8-7-9 aluminum pole About 12' northeast of Station 102+00.00	Bollard installation by City Contractor	None	During Construction	None
TRN8-6-9 aluminum pole Near Station 108+23.32	Bollard installation by City Contractor	None	During Construction	None
TRN8-5-9 aluminum pole About 22' southwest of Station 115+00.00	Bollard installation by City Contractor	None	During Construction	None
TRN8-4-9 aluminum pole Near Station 129+50.00	Bollard installation by City Contractor	None	During Construction	None
TRN3-9 aluminum pole About 30' northwest of Station 120+50.00	Protect guywires and flag anchors by City Contractor	None	During Construction	None
TRN4-8 aluminum pole About 30' northwest of Station 120+50.00	Protect guywires and flag anchors by City Contractor	None	During Construction	None



## Utility Work Schedule

TRN1-9 aluminum pole About 30' northwest of Station 125+00.00	Protect guywires and flag anchors by City Contractor	None	During Construction	None
Protect existing 12470V underground electric at Station 501+00.00 to 501+50.00	Locate and protect Underground Electric during construction of stormwater pipe (S1-S2)	None	During Construction	45
Protect existing 120V underground electric from Pole 37221 near Station 501+00.00 to approx. Station 503+00.00	Locate and protect Underground Electric during construction of curb ramp and sidewalk and curbs	None	During Construction	45
Protect existing 12470V underground electric from approx. Station 129+75.00 to Station 135+50.00	Locate and protect Underground Electric during construction of curb ramp and sidewalk and curbs	None	During Construction	45