



Update on Transition of SW Services

Fire Chief Jeff Lane

December 8, 2016
140423A



Transition of SW Services

October 1, 2017

- City responsible for Fire-Rescue and Forest Park
- GFR Squad will move to temporary location
- Engine 19 will continue to provide coverage without FSAA reimbursement
- GFR Station 9 and ACFR 19 planning is underway
- When Engine 19 relocates, Engine 9 will be activated.



Facets Study Recommendation

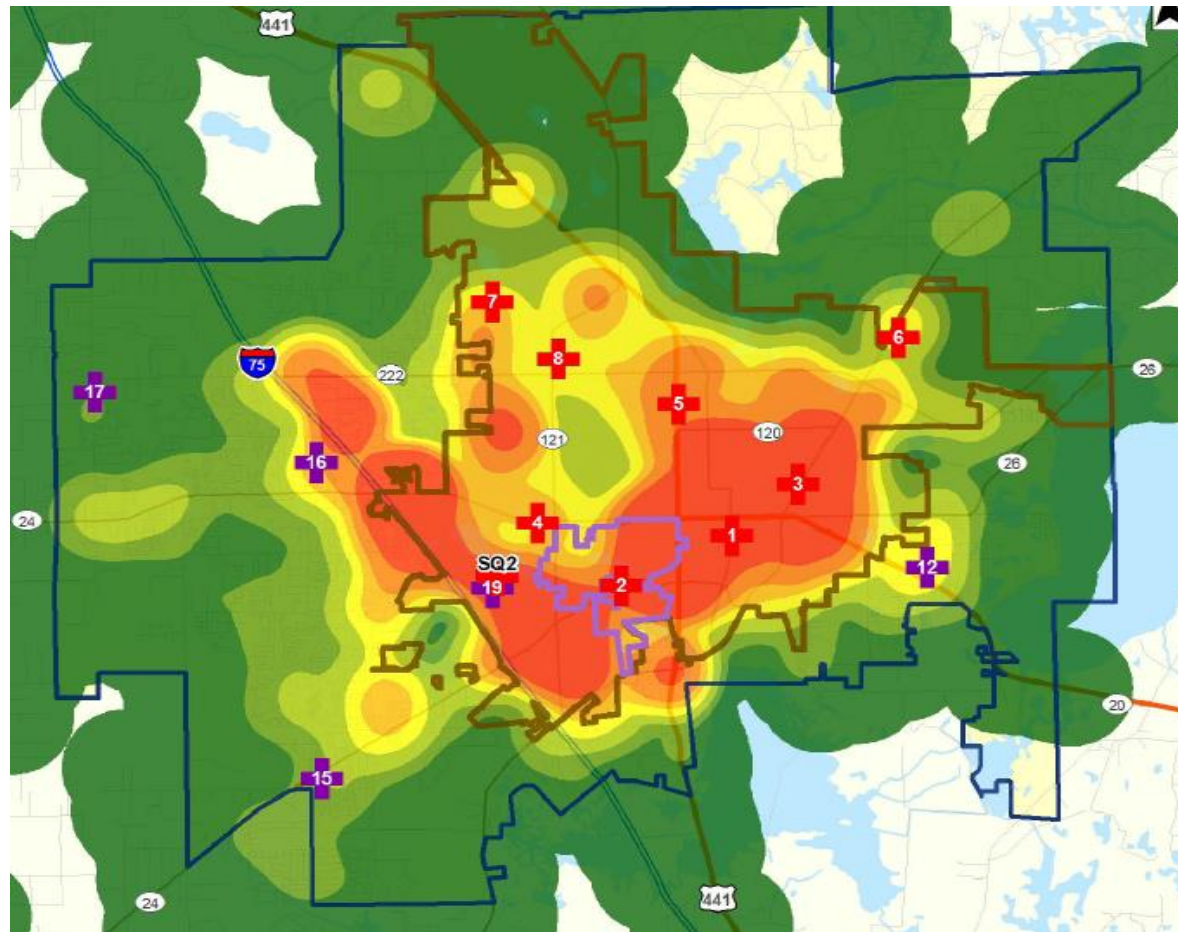
Near to Mid-Term

1. Build Gainesville Fire-Rescue Station near the intersection of SW Archer Road and I-75 and staff the station with an engine company.
2. Continue the operation of the Squad in its current location or a suitable location nearby.



Incident Density

*Facets Study





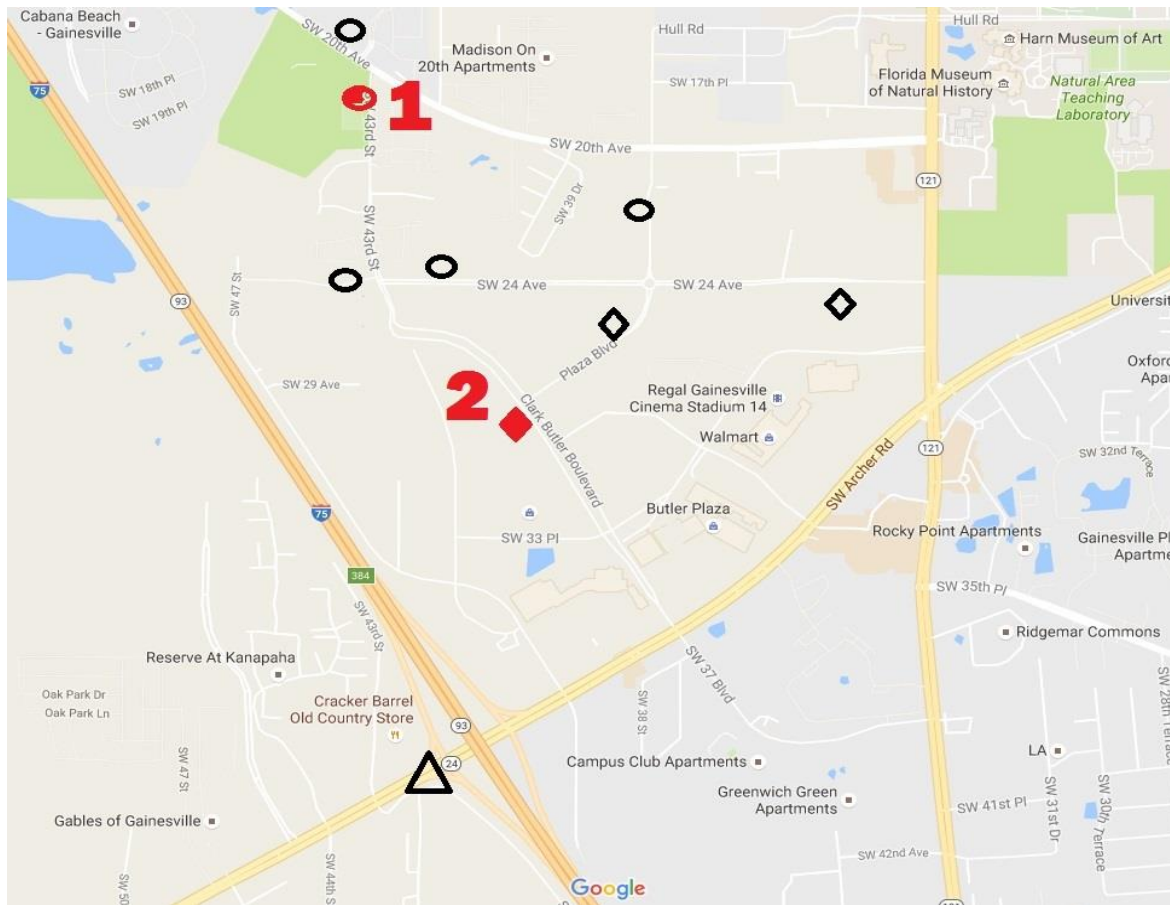
Recommended Station Location






SW Archer
Road and I-75



Selecting a Temporary Site

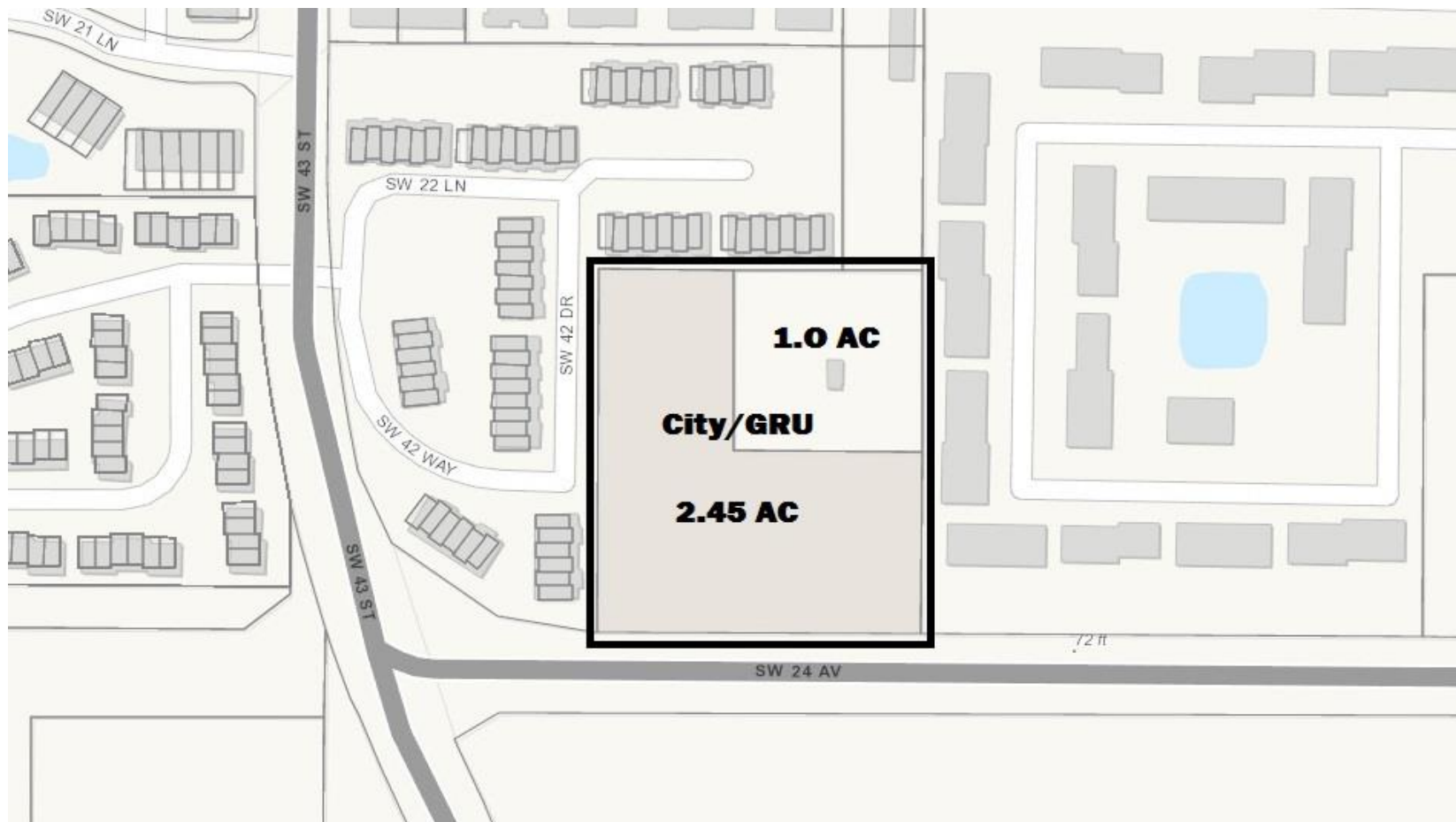


**GFR Station - 9
 Temporary
 Location Map**

-  **Sta. 9 (Study Location)**
-  **Butler Locations**
-  **Temporary Locations**



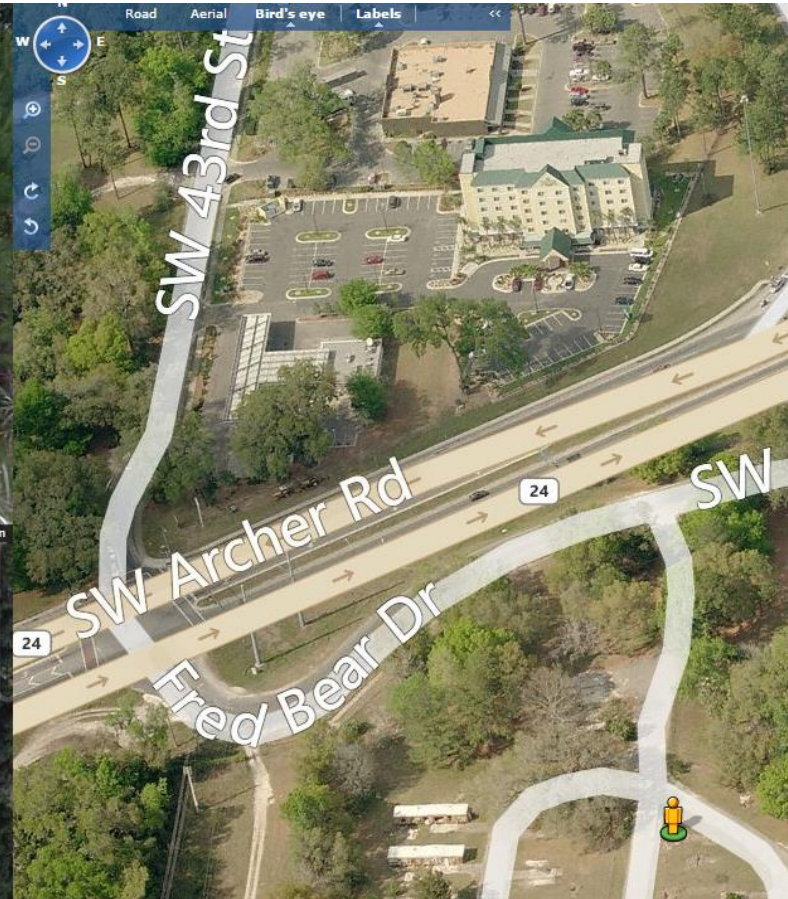
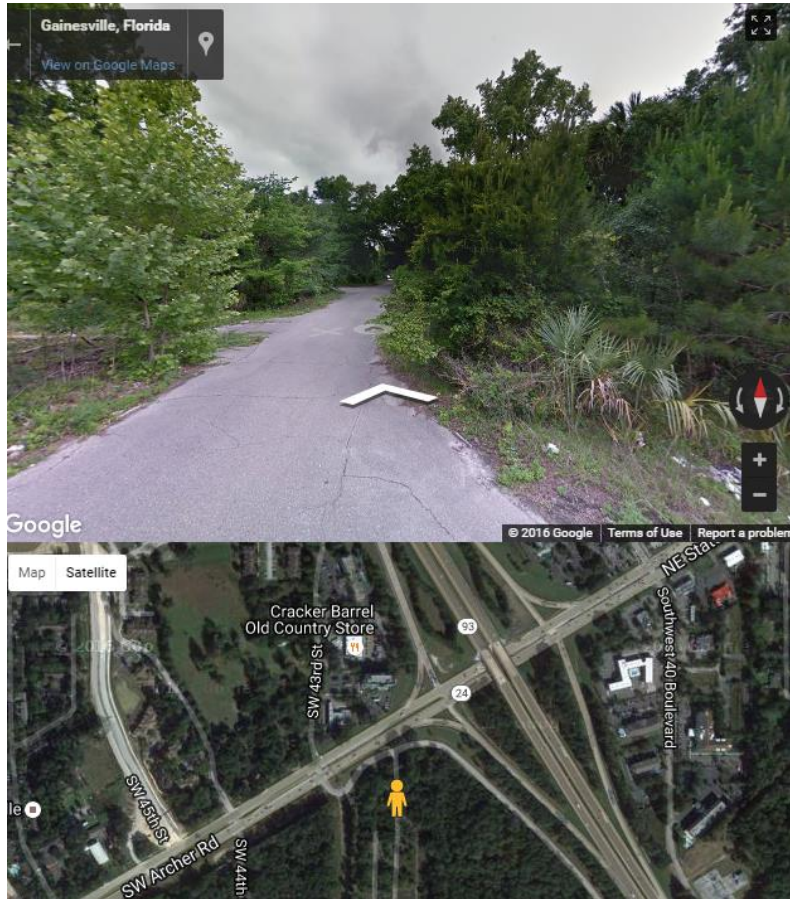
Site 1A

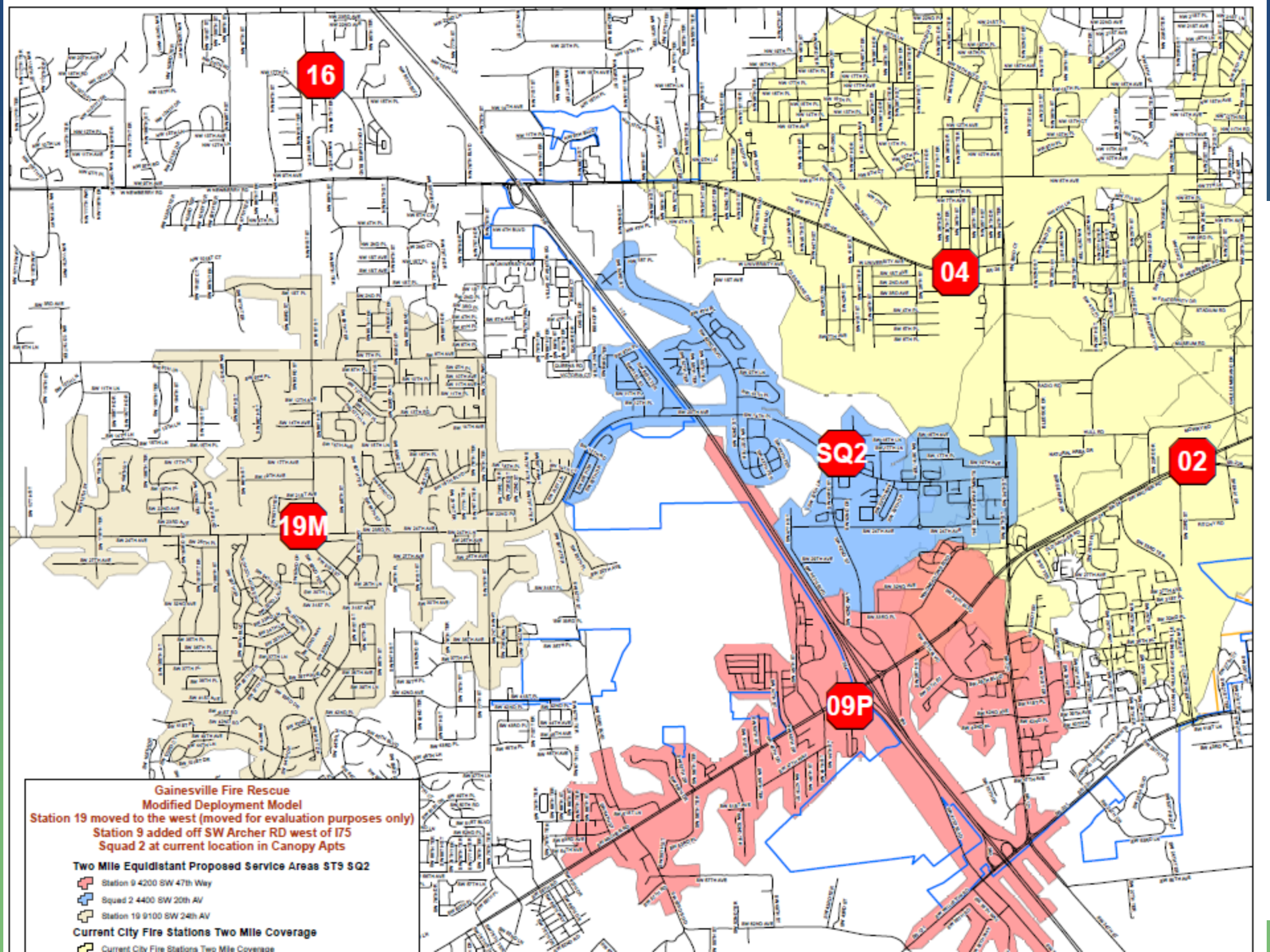




Site 2 – A or B







16

04

SQ2

02

19M

09P

Gainesville Fire Rescue

Modified Deployment Model

Station 19 moved to the west (moved for evaluation purposes only)
 Station 9 added off SW Archer RD west of I75
 Squad 2 at current location in Canopy Apts

Two Mile Equidistant Proposed Service Areas ST9 SQ2

- Station 9 4200 SW 47th Way
- Squad 2 4400 SW 20th AV
- Station 19 9100 SW 24th AV

Current City Fire Stations Two Mile Coverage

- Current City Fire Stations Two Mile Coverage



Transition Timeline

FY17

- Confirm suitable modular location/co-location options
- Set term for modular building (36 months)
- July 1 – Modular Station on-line (“Squad 9”)
- Seek approval of property purchase for Fire Station 9