

LEGISLATIVE #

110870

CITY OF
GAINESVILLE DESIGN BUILD SERVICES FOR
RTS BUS FLEET MAINTENANCE
& OPERATIONS FACILITY

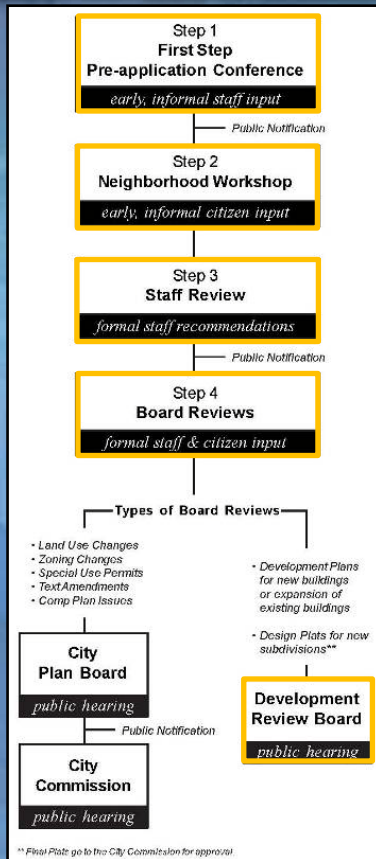


CITY COMMISSION
ADVANCED SCHEMATIC DESIGN PRESENTATION

REVIEW PROCESS

Site Plan

VCIP



November 2011
 December 2011
 We Are Here →
 June 2012
 August 2012

ADMINISTRATIVE PROCEDURE No. 22A

Department	City Manager	Division	Date	3/18/2009
This Procedure replaces Number: <u>22</u>		Approved: Issuing Dept. <u>City Manager's Office</u>		
Dated: 2/6/2007		City Manager <u>[Signature]</u>		

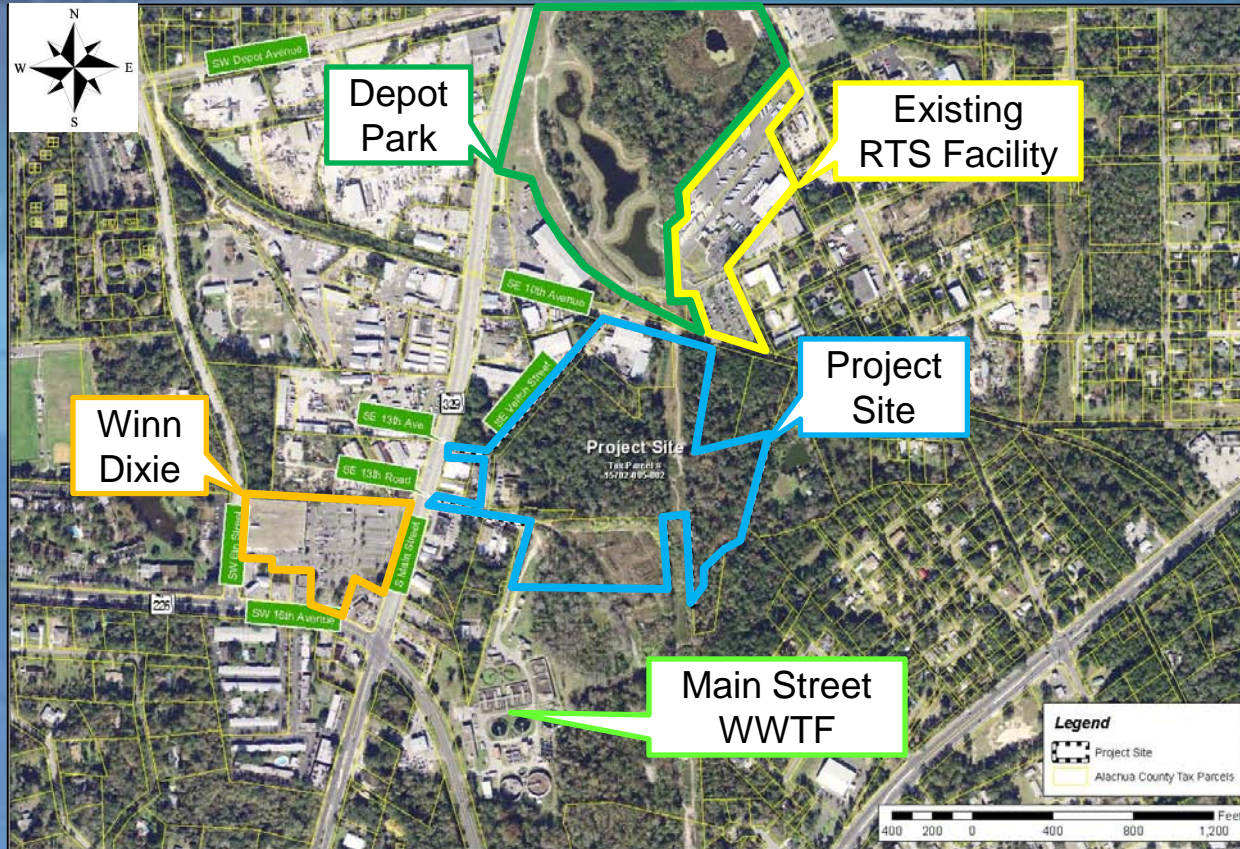
Vertical Capital Project Approval Procedures

All vertical capital projects for the City of Gainesville General Government Departments are administered by the General Services Department. **Note:** Buildings, renovations, or alterations which are reviewed by the Historic Preservation Review Board shall not be subject to this process.

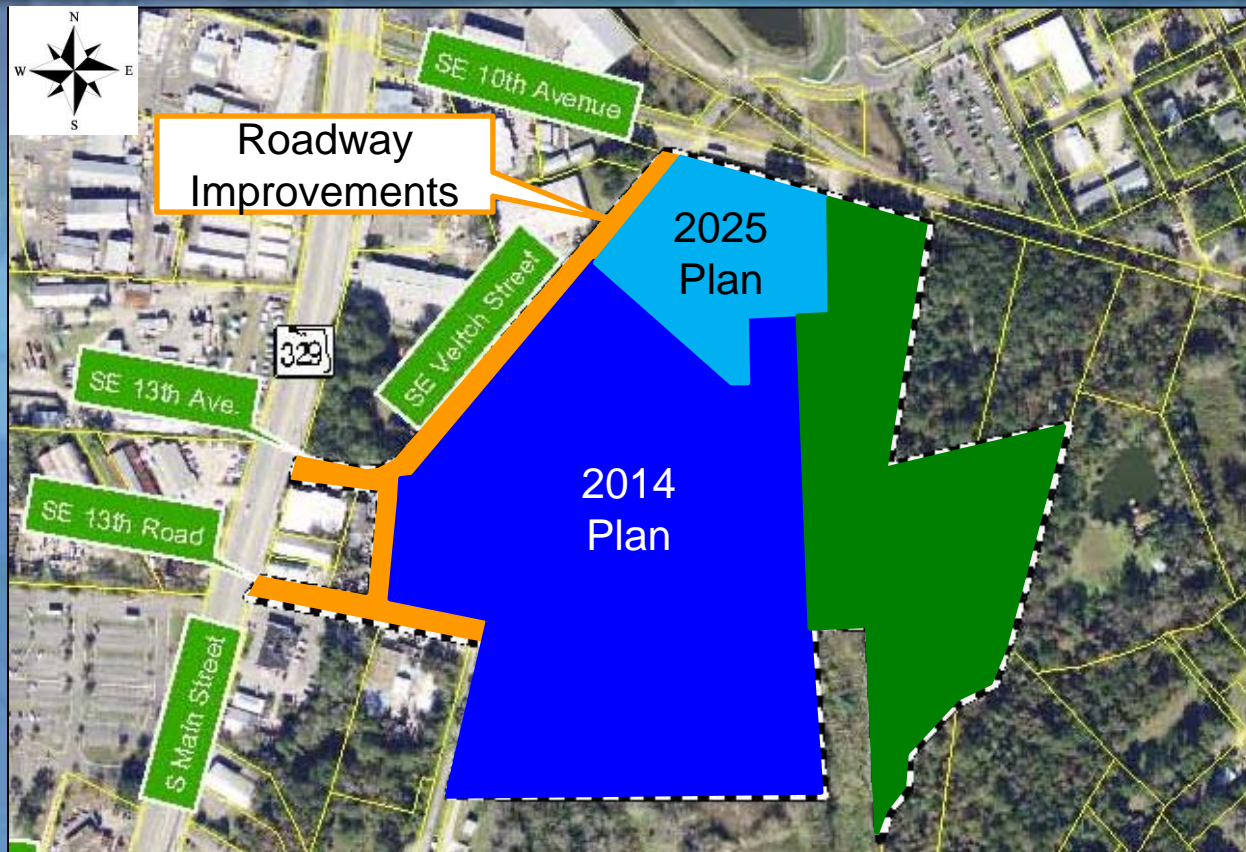
The Department's Mission is to develop and establish design and construction standards for vertical capital projects that will:

- Optimize use of space
- Maximize energy conservation strategies
- Ensure quality product
- Minimize maintenance costs
- Ensure functionality (meets needs and goals of proposed project)
- Control the overall cost of the project
- Standardize security system
- Ensure compliance with the City/County building Codes and standards

AERIAL MAP



GENERAL PROJECT LAYOUT



- +/- 20 acres total area
- Phased Construction

Phase 1

- +/- 29,650 SF Admin & Ops
- +/- 59,720 SF Maintenance
- +/- 6,380 SF Fuel Service
- +/- 3,200 SF Fuel Tanks
- +/- 12,728 SF Bus Wash
- +/- 150 Bus Storage
- +/- 372 Parking Spaces

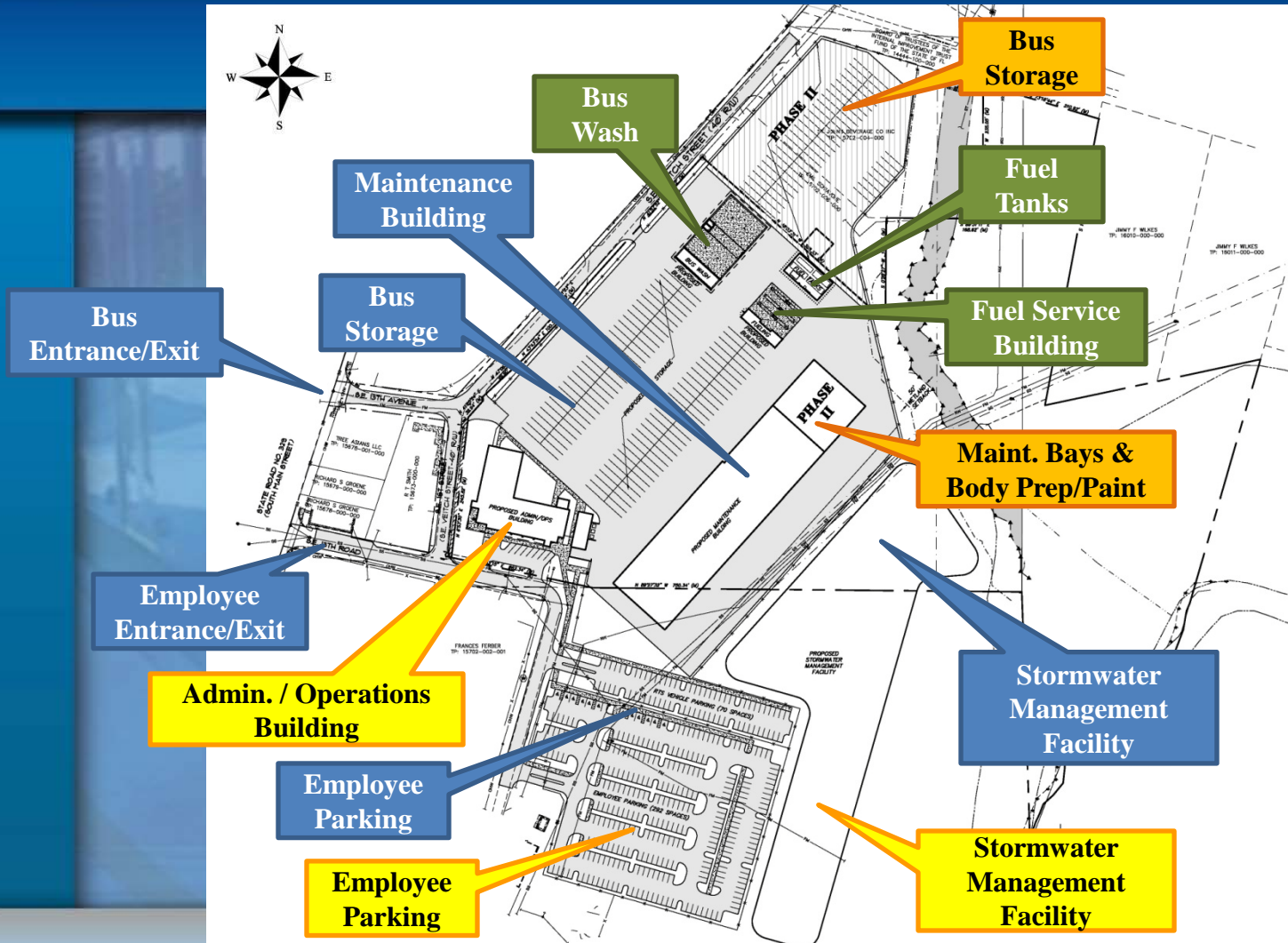
Roadway Improvements

- SE 13th Road
- SE 13th Avenue
- SE Veitch Street
- Resurfacing
- Reconstruction
- Utility Work
- Lighting
- Sidewalk

Phase 2

- Under Contract
- +/- 25,320 SF Maint. Bays & Paint/Body
- +/- 50 Bus Storage

SITE PLAN

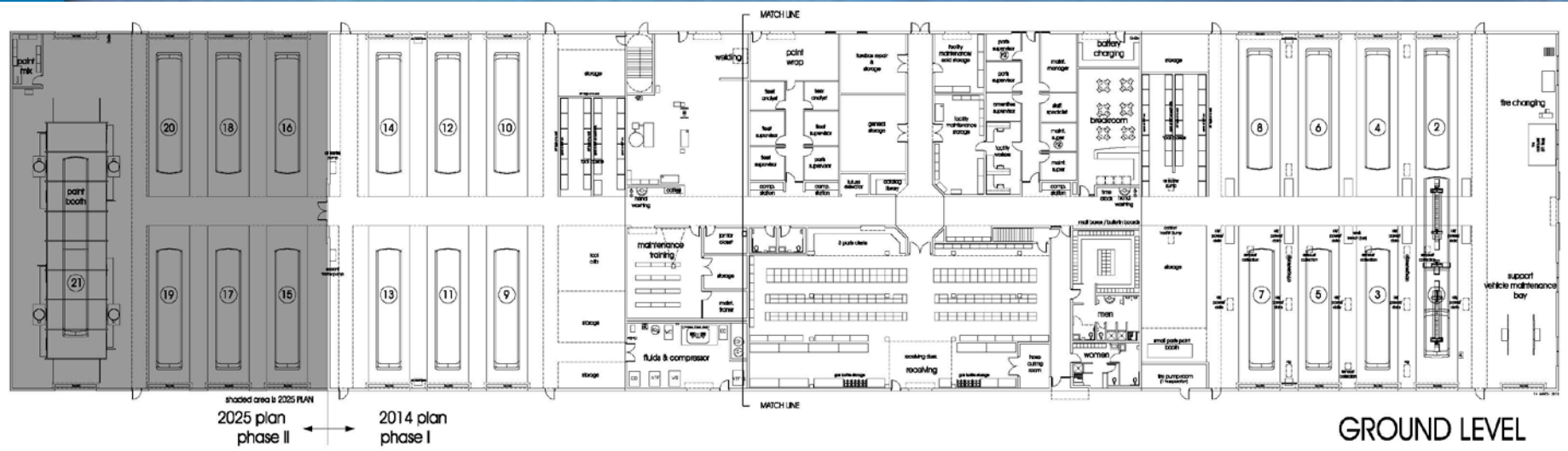


FUNDING PLAN

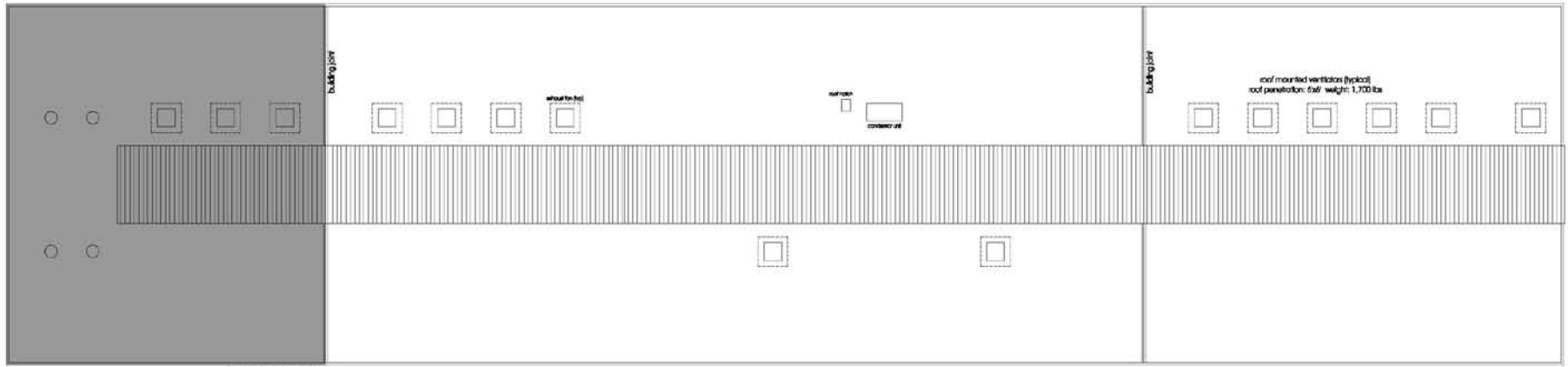
- 2014 Plan
Phase 1-a
Funded
- 2014 Plan
Phase 1- b
Funded
- 2014 Plan
Phase 1- c
Funding Requested
- 2025 Plan
Phase 2
Funding Requested

FLOOR PLAN – MAINTENANCE BUILDING

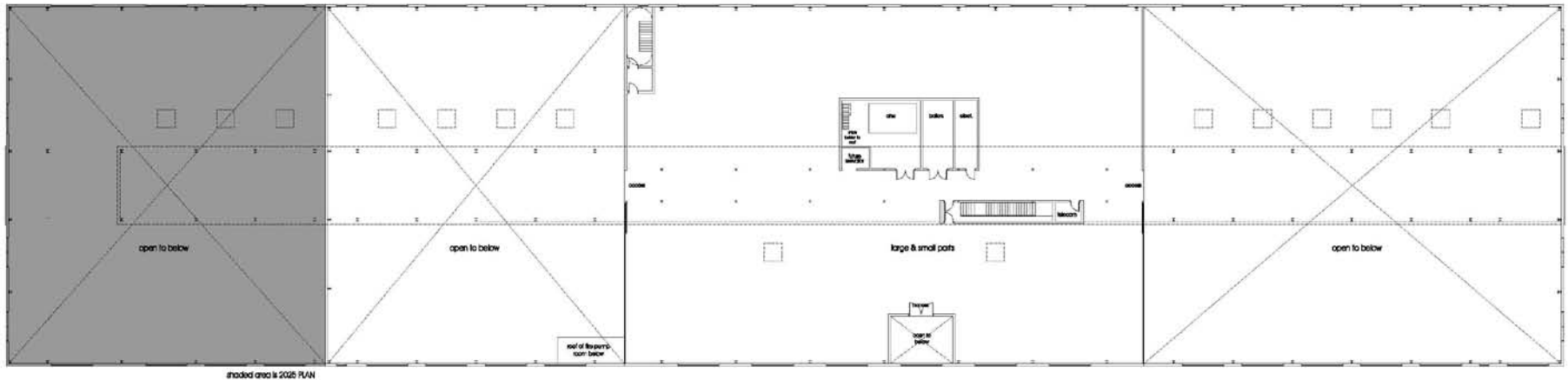
1st FLOOR



FLOOR PLAN – MAINTENANCE BUILDING MEZZANINE / ROOF

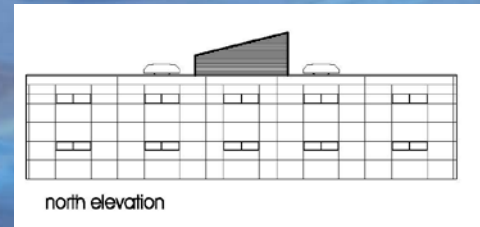
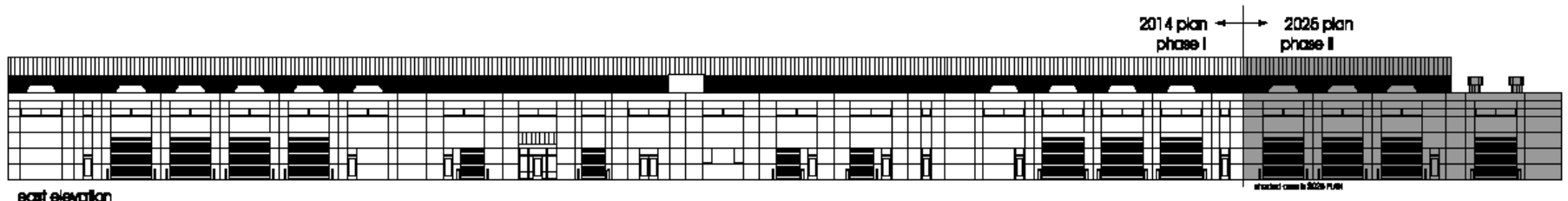
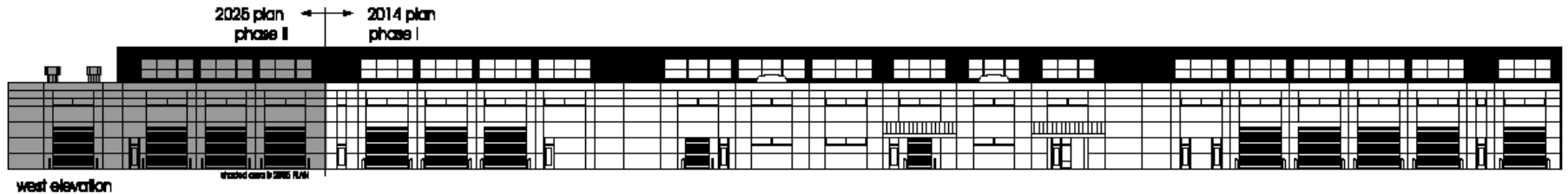


ROOF LEVEL



MEZZANINE LEVEL

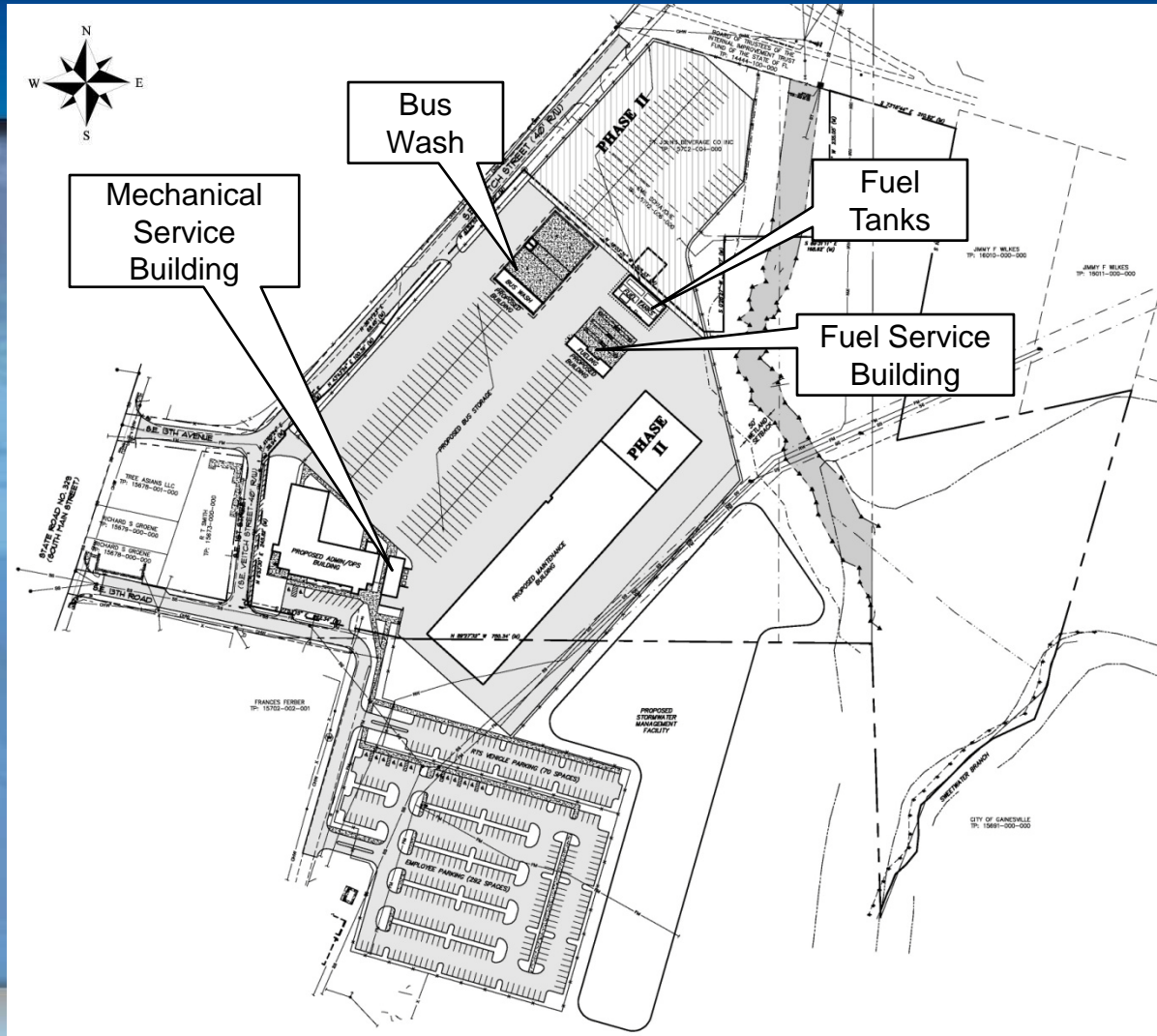
ELEVATION PLAN – MAINTENANCE BUILDING



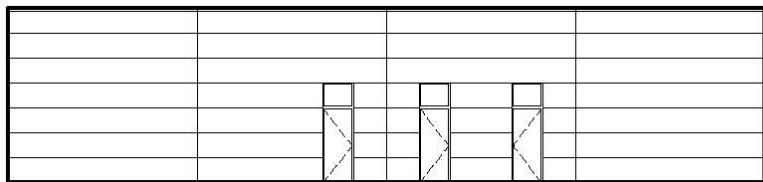
ELEVATION PLAN – MAINTENANCE BUILDING



SITE PLAN

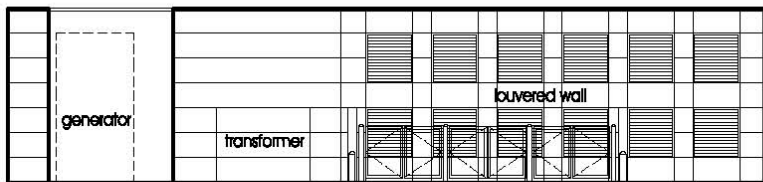


FLOOR/ELEVATION PLAN – MECHANICAL SERVICE BUILDING



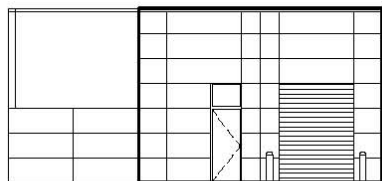
WEST ELEVATION

SCALE: 1/8"=1'-0"



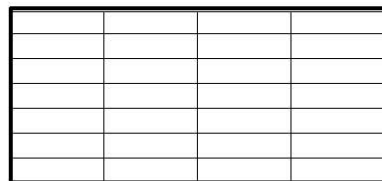
EAST ELEVATION

SCALE: 1/8"=1'-0"



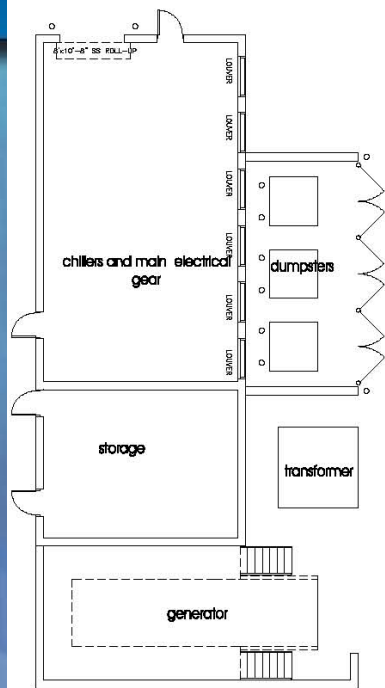
NORTH ELEVATION

SCALE: 1/8"=1'-0"



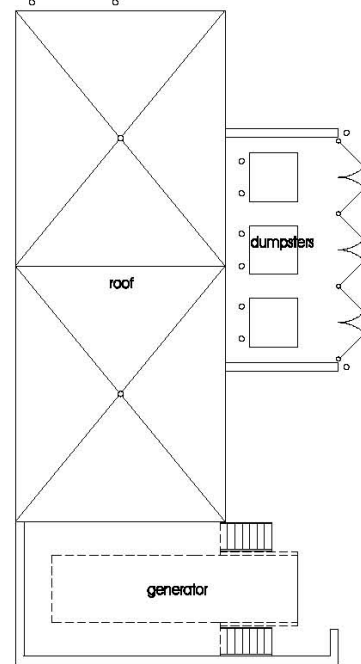
SOUTH ELEVATION

SCALE: 1/8"=1'-0"



SERVICE BUILDING FLOOR PLAN

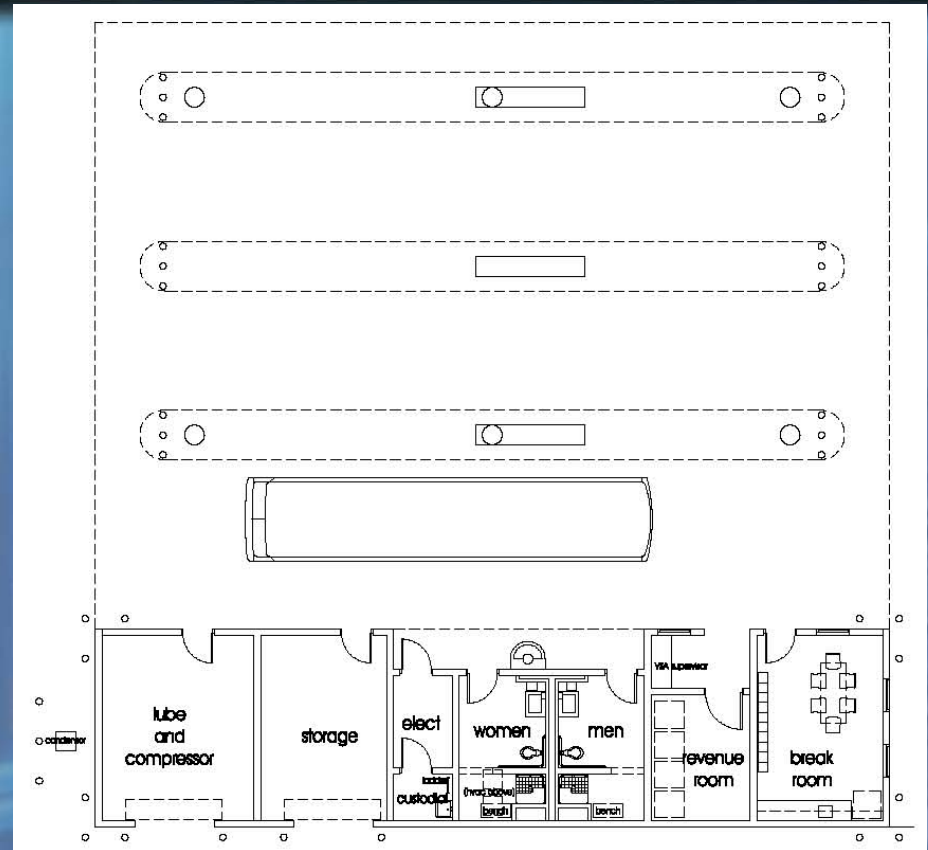
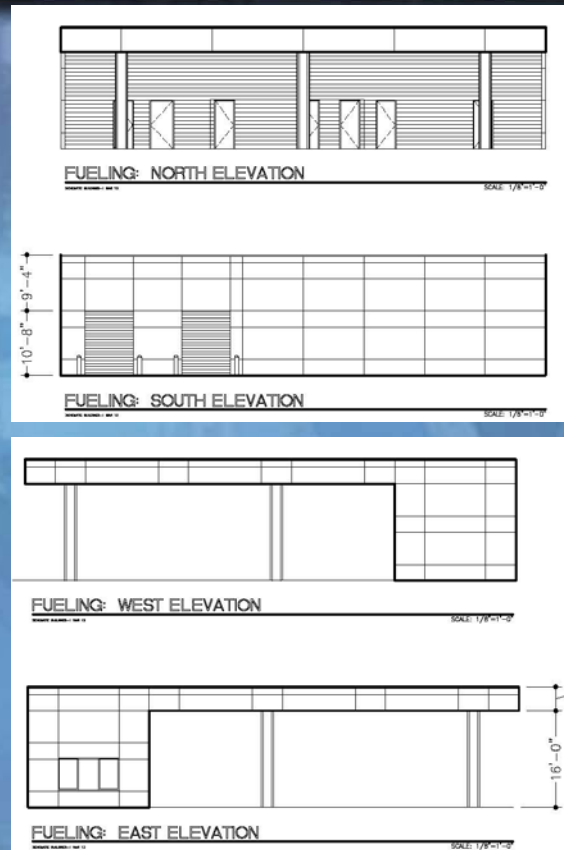
SCALE: 1/8"=1'-0"



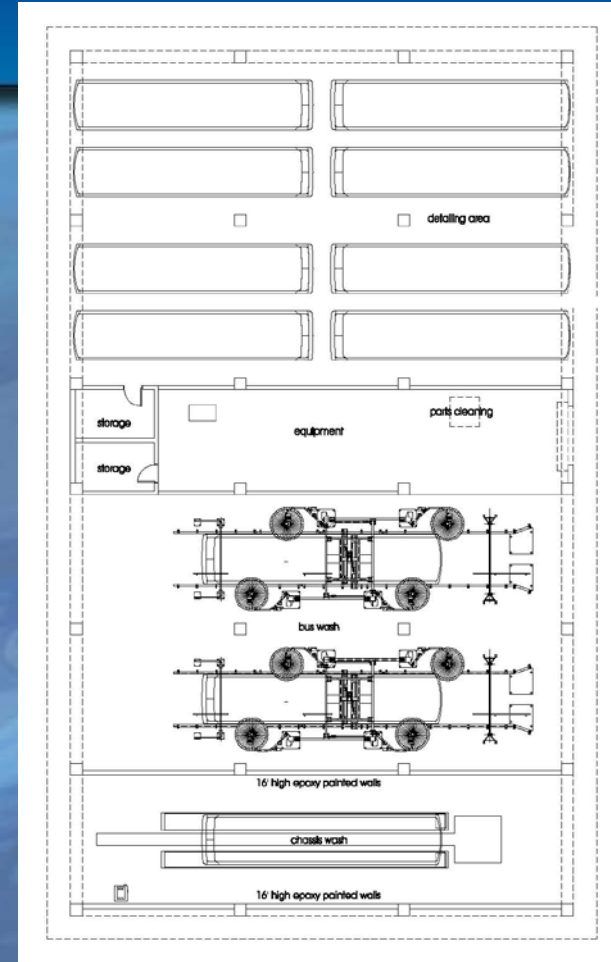
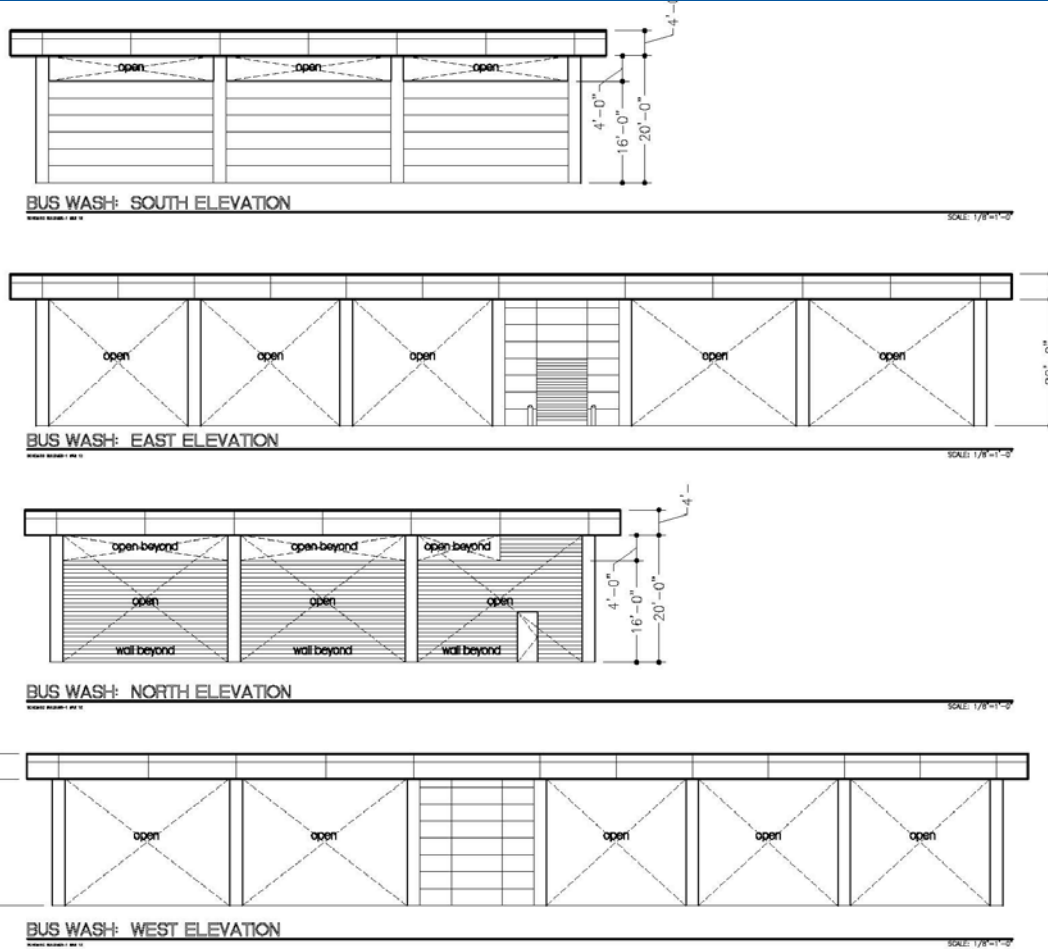
SERVICE BUILDING ROOF PLAN

SCALE: 1/8"=1'-0"

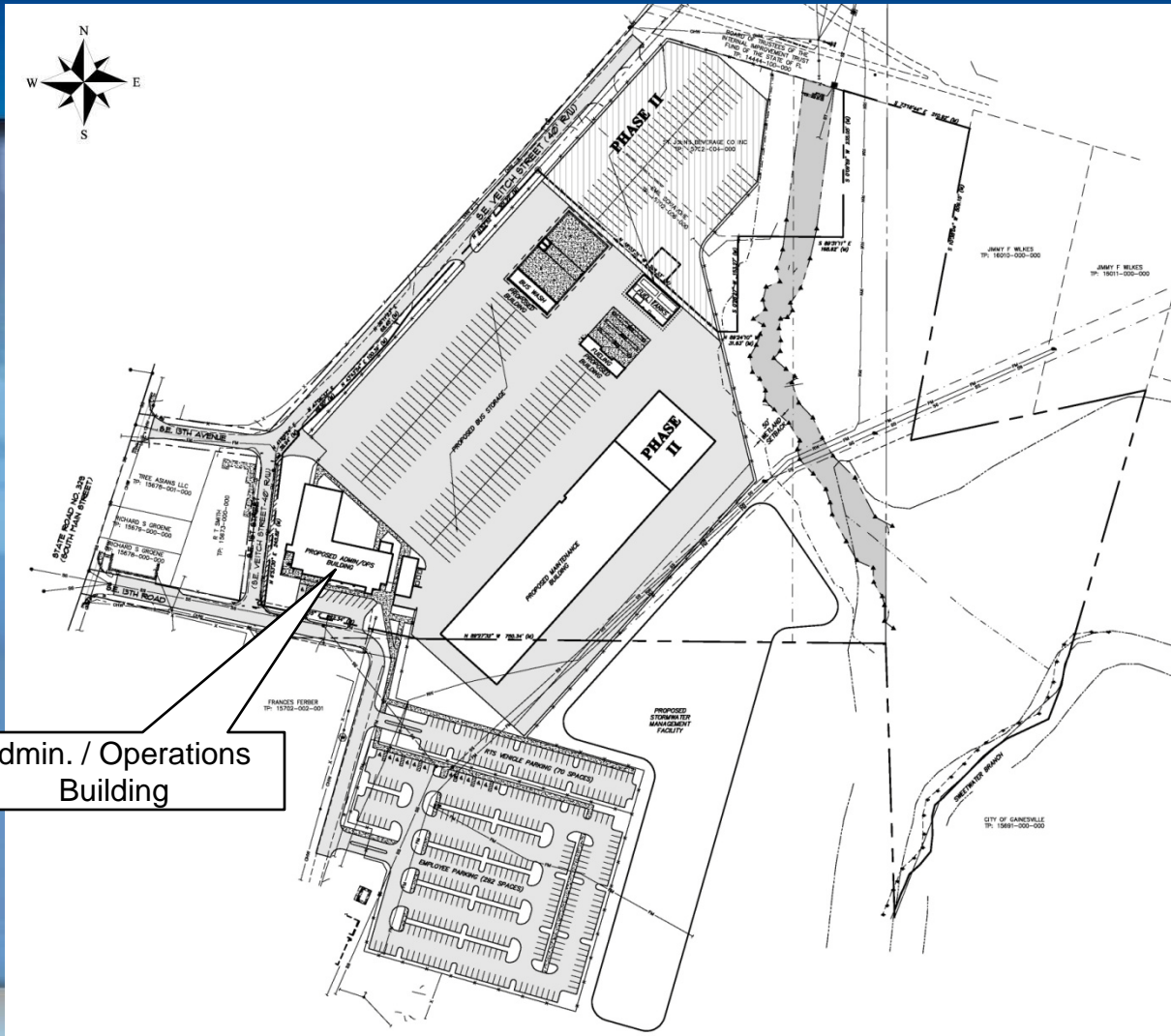
FLOOR/ELEVATION PLAN – FUELING SERVICE BUILDING



FLOOR/ELEVATION PLAN – BUS WASH BUILDING



SITE PLAN

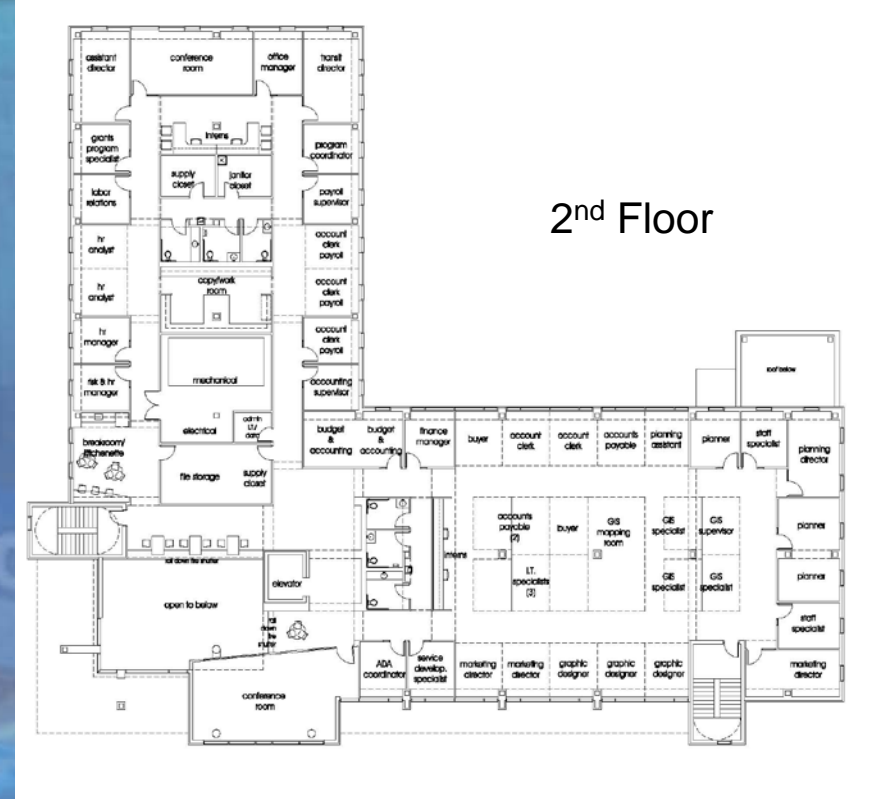
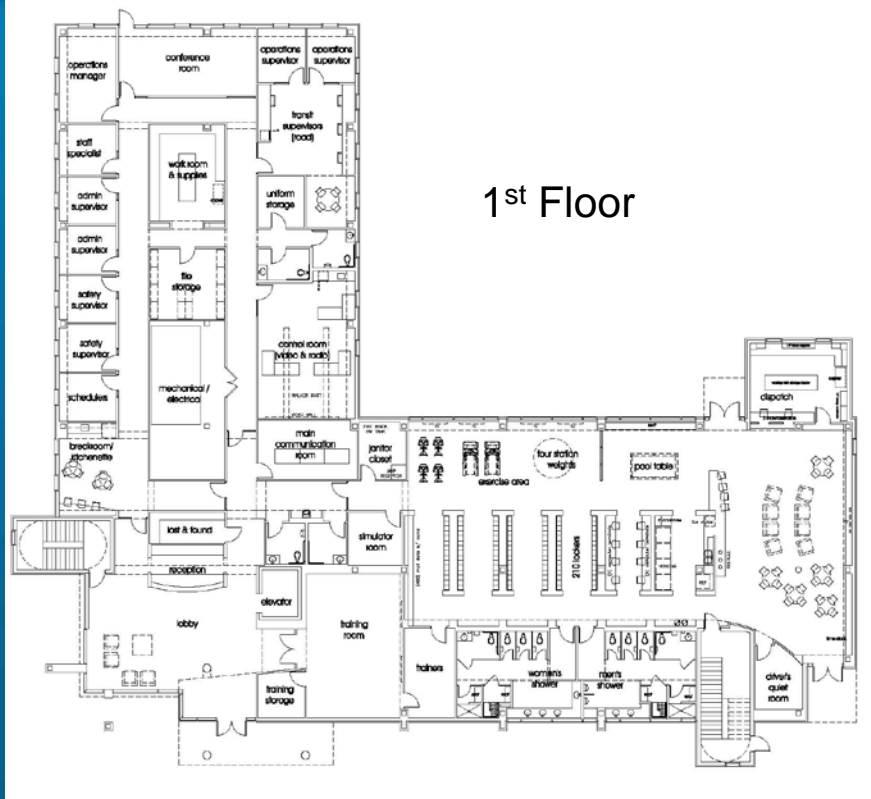


Admin. / Operations Building

FLOOR PLAN - ADMIN/OPS BUILDING

1st FLOOR

2nd FLOOR



ELEVATION PLAN – ADMIN/OPS BUILDING



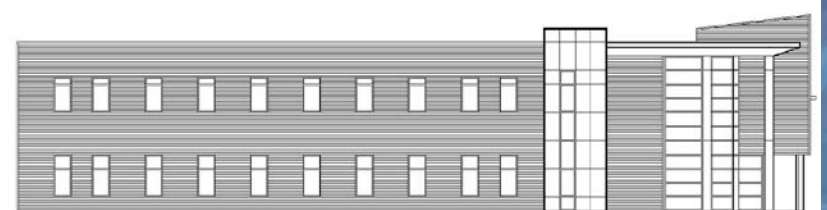
ADMIN / OPS: NORTH ELEVATION

SCALE: 1/8"=1'-0"



ADMIN / OPS: NORTH ELEVATION

SCALE: 1/8"=1'-0"



ADMIN / OPS: WEST ELEVATION

SCALE: 1/8"=1'-0"



ADMIN / OPS: EAST ELEVATION

SCALE: 1/8"=1'-0"

ELEVATION PLAN – ADMIN/OPS BUILDING



CITY OF
GAINESVILLE DESIGN BUILD SERVICES FOR
RTS BUS FLEET MAINTENANCE
& OPERATIONS FACILITY



CITY COMMISSION
ADVANCED SCHEMATIC DESIGN PRESENTATION