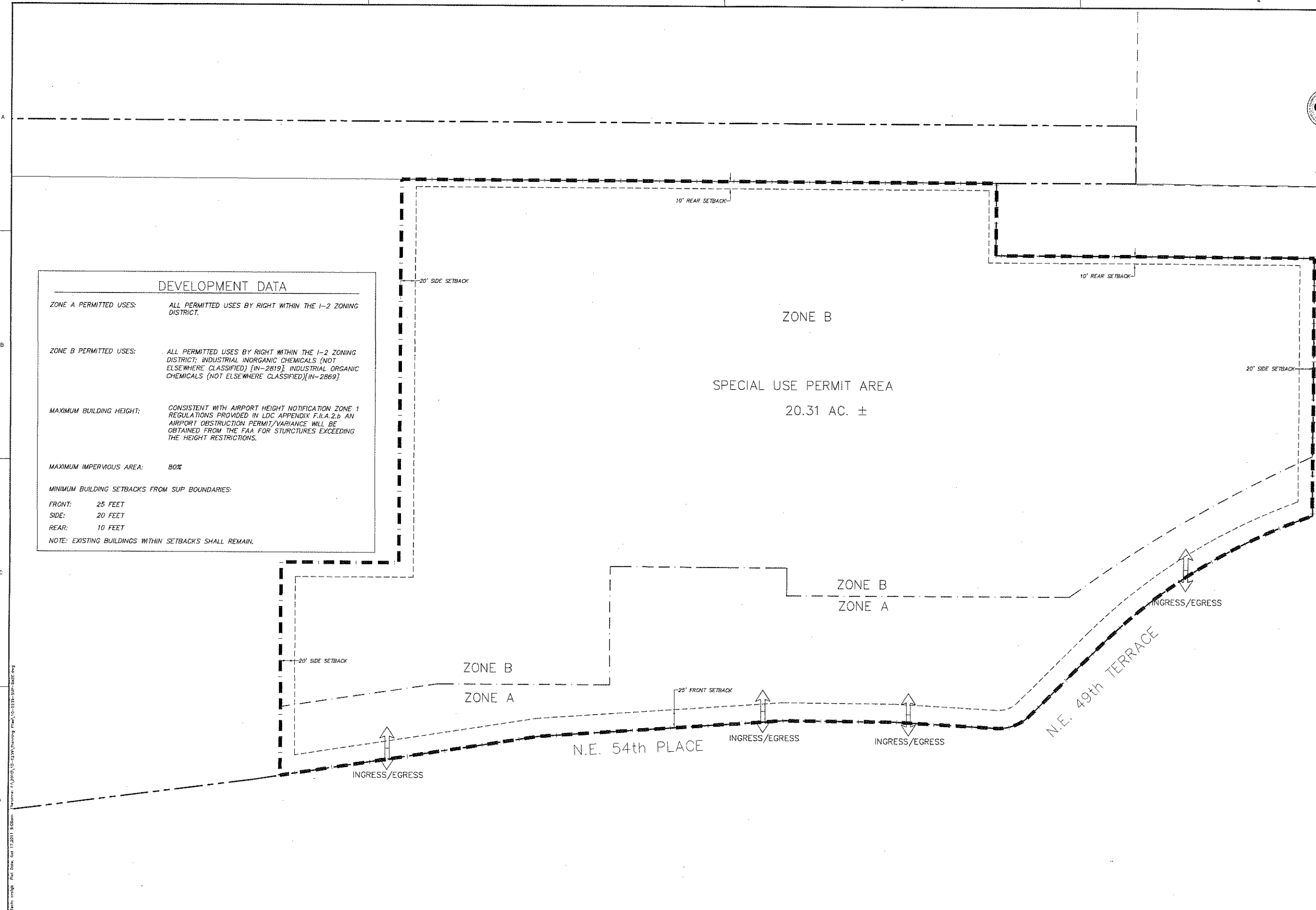


LEGISLATIVE #

110527D

Exhibit B:
Special Use Permit Maps



DEVELOPMENT DATA

ZONE A PERMITTED USES: ALL PERMITTED USES BY RIGHT WITHIN THE I-2 ZONING DISTRICT.

ZONE B PERMITTED USES: ALL PERMITTED USES BY RIGHT WITHIN THE I-2 ZONING DISTRICT; INDUSTRIAL INORGANIC CHEMICALS (NOT ELSEWHERE CLASSIFIED) [IN-2819]; INDUSTRIAL ORGANIC CHEMICALS (NOT ELSEWHERE CLASSIFIED)[IN-2869]

MAXIMUM BUILDING HEIGHT: CONSISTENT WITH AIRPORT HEIGHT NOTIFICATION ZONE 1 REGULATIONS PROVIDED IN LDC APPENDIX F.II.A.2.b AN AIRPORT OBSTRUCTION PERMIT/VARIANCE WILL BE OBTAINED FROM THE FAA FOR STRUCTURES EXCEEDING THE HEIGHT RESTRICTIONS.

MAXIMUM IMPERVIOUS AREA: 80%

MINIMUM BUILDING SETBACKS FROM SUP BOUNDARIES:
 FRONT: 25 FEET
 SIDE: 20 FEET
 REAR: 10 FEET

NOTE: EXISTING BUILDINGS WITHIN SETBACKS SHALL REMAIN.



Causseaux, Hewett, & Welpole, Inc.
 Engineering • Planning
 8011 NW 1st Place, Gainesville, Florida 32607
 Phone: (352) 331-4776 • Fax: (352) 331-4776 • www.chw-inc.com
 CA-8075



SCALE: 1"=80'
 THIS DRAWING IS FOR INFORMATION ONLY AND IS NOT TO BE USED FOR CONSTRUCTION. THE ORIGINAL DRAWING IS THE AUTHORITY. THIS SHEET, ALONG WITH ALL OTHER SHEETS, SHALL BE KEPT TOGETHER.

DATE: 10-02-19
 PROJECT: SWANEE LLC
 SHEET TITLE: SPECIAL USE PERMIT PLAN

DESIGNER: C. STAPLER
 CHECKER: R. WALPOLE, PE
 PROJECT MANAGER: A. ROBERTS, PE

DATE: 08-10-2011
 RESUBMITTAL: 10-17-2011

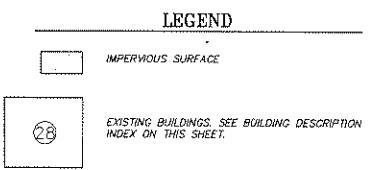
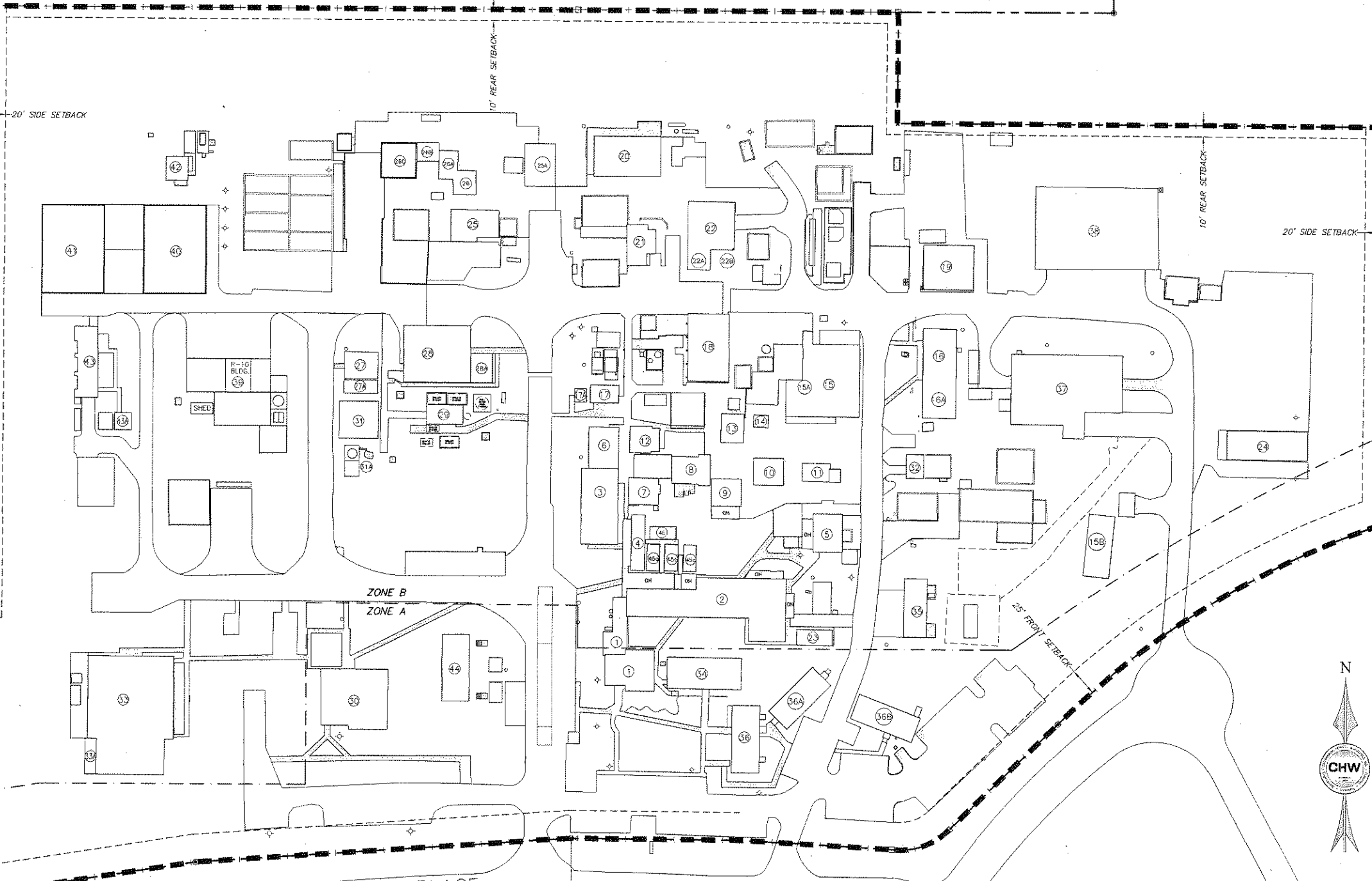
PROJECT: SWANEE LLC
 SHEET TITLE: SPECIAL USE PERMIT PLAN

DATE: 10-02-19
 PROJECT: SWANEE LLC
 SHEET TITLE: SPECIAL USE PERMIT PLAN

NO.	DATE	DESCRIPTION	BY	CHECKED
1	10/2/19	ISSUED FOR PERMIT	AS	AS
2	10/2/19	REVISIONS	AS	AS
3	10/2/19	REVISIONS	AS	AS
4	10/2/19	REVISIONS	AS	AS
5	10/2/19	REVISIONS	AS	AS

BUILDING DESCRIPTION INDEX

- 1 Plant Office/Rest Rooms
- 2 R&D Labs
- 3 Analytical Wet Lab
- 4 Quality/Compliance Trailer Offices
- 5 Pilot Plant/Catalog Manufacturing
- 6 Analytical Instrumentation Lab
- 7 R&D Lab
- 8 Filter Storage
- 9 Material Control Bottling Facility
- 10 R&D Chemical Storage
- 11 R&D/Catalog Equipment Storage
- 12 Foreman's Office
- 13 Building 18 - Hot Oil Units
- 14 Covered Area
- 15 Material Control Shipping/Receiving
- 15A Material Control Vault
- 15B Material Control Offices
- 16 Manufacturing Offices
- 16A Material Control Offices/Warehouse
- 17 Production Breakroom
- 17A Maintenance Storage (used fluorescent bulbs)
- 18 Covered Commercial Reactor Building
- 19 East Maintenance Part Store
- 20 R&D/Catalog Autoclave Bunkers
- 20A 200 Gallon/20 Gallon Bunkered Autoclave
- 21 Uracil Manufacturing
- 22 Uracil Process Area
- 22A Operator Control Room
- 22B Plant Air Compressors
- 23 Chill Water Facility for R&D/Catalog Labs & Pilot Plant
- 24 Maintenance/Finished Goods/Raw Material Storage
- 25 S-3/S-8/S-4 Distillation Area
- 25A 25 & 26 Control Room
- 26 R-8 Production Area
- 26A R-11 Production Area
- 26B R-14 Production Area
- 26C R-18 Production Area
- 27 200 HP Boiler
- 27A 200 HP Boiler
- 28 West Maintenance Shop / Maintenance Supt Office
- 28A Instrumentation & Electrical Office and Shop
- 29 Chib/Tower Water Area for West Side of Plant
- 30 Shower/Locker Rooms (Men and Women)
- 31 Nitrogen Generation System
- 31A Liquid Nitrogen & Vaporizer
- 32 Waste Water/pH Control Center
- 32A Bulk Caustic & HCl Storage for pH Control
- 32B Bulk pH Control Tanks/Bulk Ammonia Storage
- 32C Volatile Organic Chemical Stripper
- 32D Ammonia Stripper Facility
- 32E Magnesium Hydroxide Storage & Delivery
- 33 Lancaster Synthesis 34 R&D Trailer Offices
- 34 R&D Offices
- 35 Fluorine Pad/Catalog Manufacturing
- 36 Engineering Trailer Offices
- 36A Engineering Trailer Offices
- 36B EHS Offices
- 37 Material Control Warehouse
- 38 Intermediate/Raw Material/90 Day Pad
- 39 R-10/R-12 Production Area
- 40 Covered Intermediate East Storage Pad
- 41 Covered Intermediate West Storage Pad
- 42 Fire Pump House
- 43 NBD
- 44 Fire-Manufactured Building
- 45 R&D Storage Sheds A,B and C
- 46 ESH's Storage Shed



Causseaux, Hewett, & Walpole, Inc.
 Engineering • Surveying • Planning
 8031 NW 1st Place, Gainesville, Florida 32607
 Phone (352) 331-9376 • Fax (352) 331-9378 • www.chw-inc.com
 CA-6075



VERIFY SCALE ON ORIGINAL DRAWING
 THIS SHEET, ADJUST SCALES ACCORDINGLY.

DATE	DESCRIPTION
10-17-2011	REVISION
10-17-2011	REVISION

DATE	DESCRIPTION
09-18-2011	SUBMITTAL
10-17-2011	RESUBMITTAL

CLIENT	SWANCO, LLC
PROJECT	SPECIAL USE PERMIT
SHEET TITLE	EXISTING CONDITIONS MAP
PROJECT NUMBER	10-0239

TECHNICAL	C. STAPLER
DRAWN	P. WALPOLE, PE
CHECKED	A. ROBERTS, PE
DATE	10-02-09

REVISION	DATE	DESCRIPTION