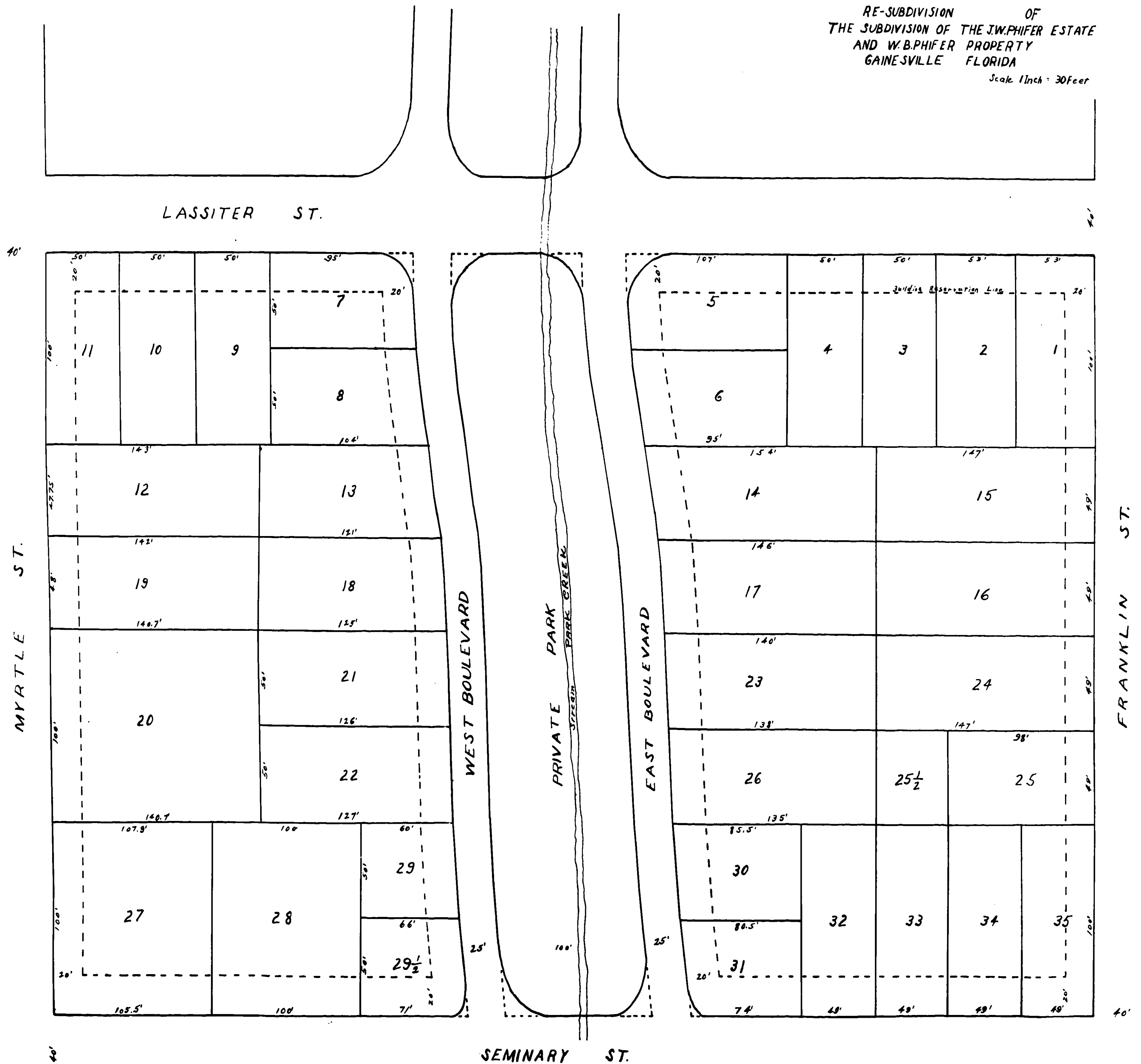


A-161

HIGHLAND TERRACE
 REVISED
 RE-SUBDIVISION OF
 THE SUBDIVISION OF THE J.W. PHIFER ESTATE
 AND W.B. PHIFER PROPERTY
 GAINESVILLE FLORIDA
 Scale 1/4" = 30 Feet



Filed and Recorded March 3rd 1925
 Geo. C. Evans Clerk
 By C. F. Evans D.C.