

Exhibit B-1 Existing Land Use Map

1001476

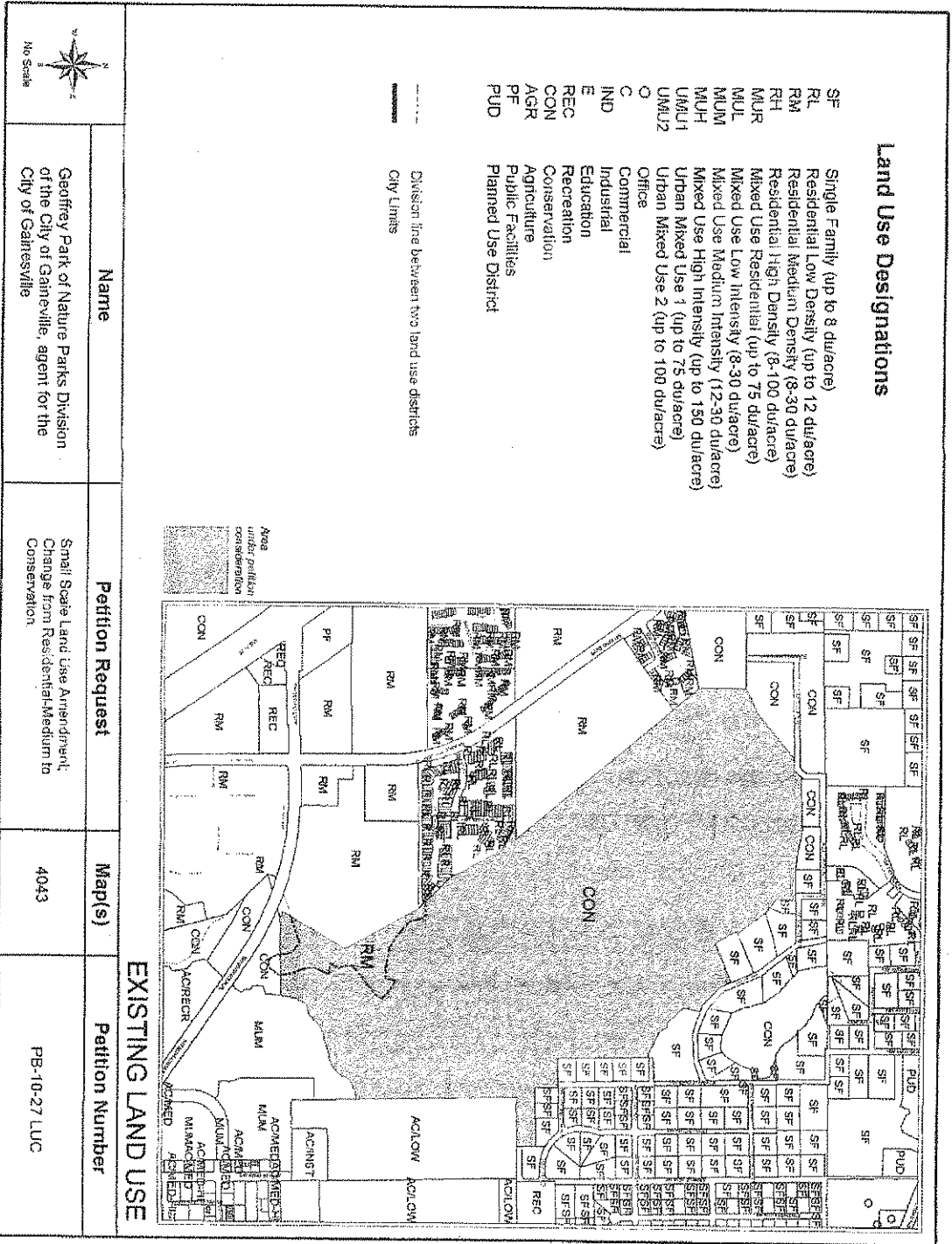
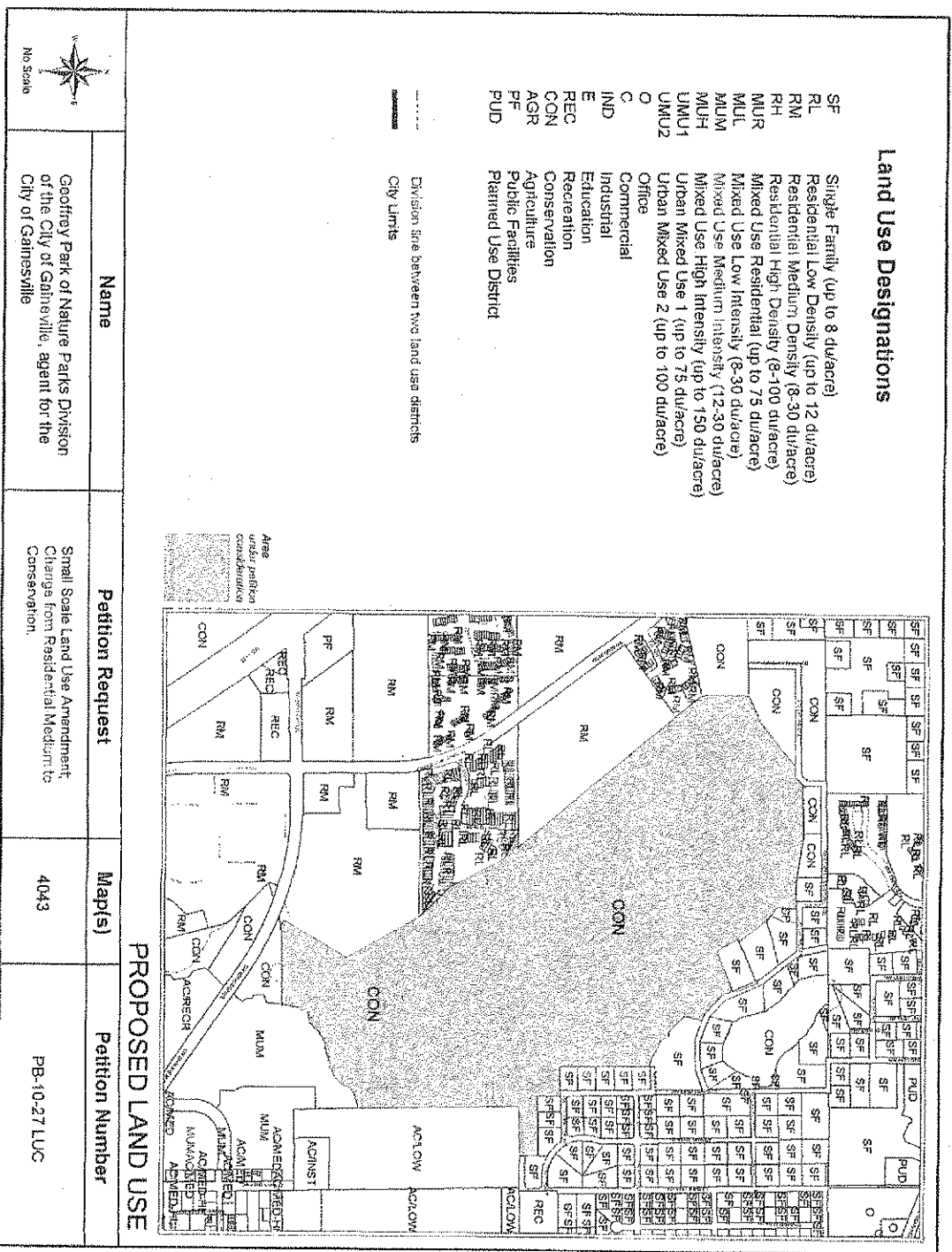


Exhibit B-2 Proposed Land Use Map

100147b

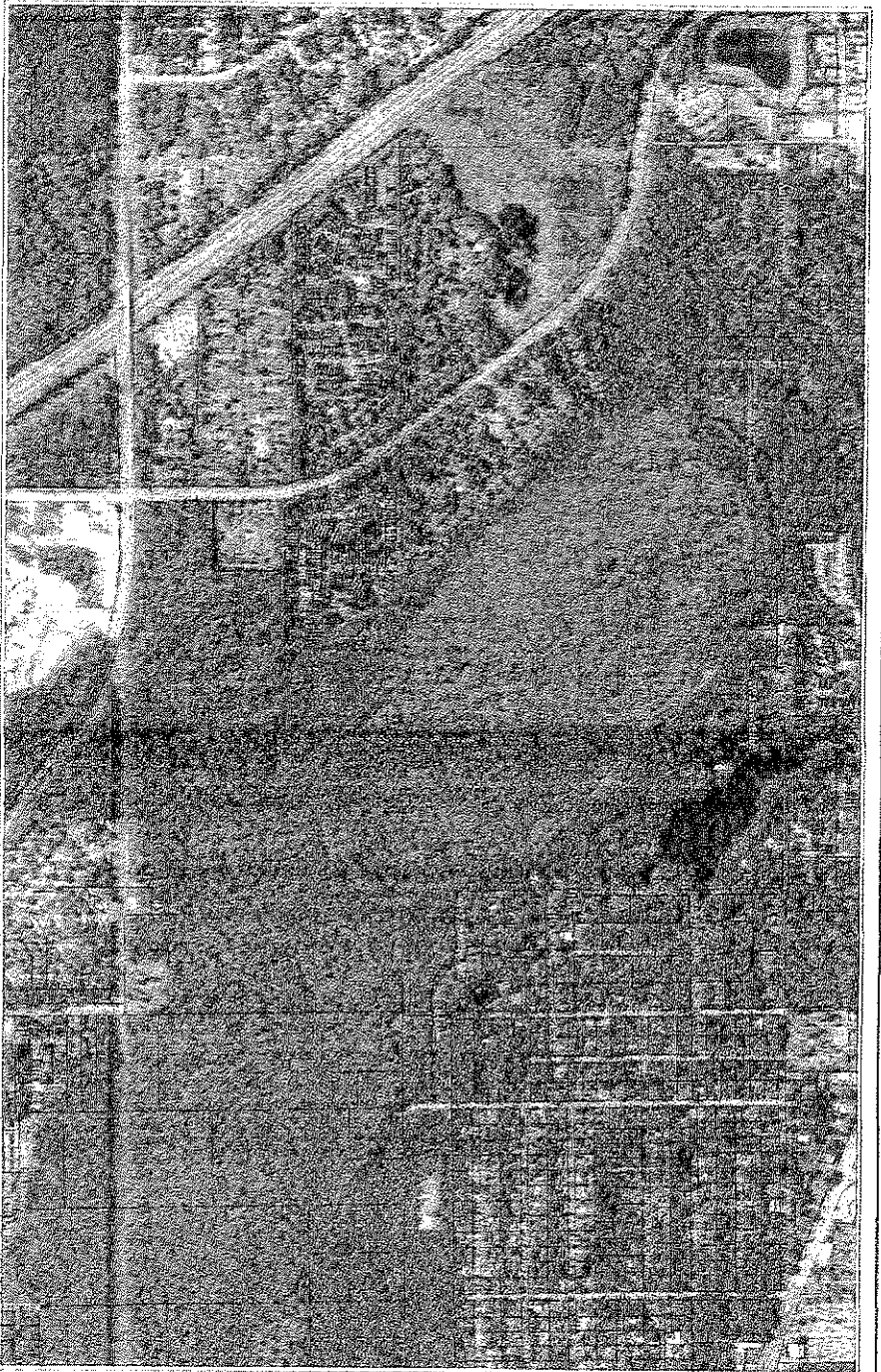


No Scale

100147b

Petition PB-10-27LUC
May 27, 2010

Exhibit B-3 Aerial Map



AERIAL PHOTOGRAPH

Name	Petition Request	Map(s)	Petition Number
Geoffrey Park of Nature Parks Division of the City of Gainesville, agent for the City of Gainesville	Small Scale Land Use Amendment Change from Residential Medium to Conservation. Change Zoning district from RMAF7 to Conservation on 7 acres.	4043	PB-10-27 LUC PB-10-28 ZON



No Scale