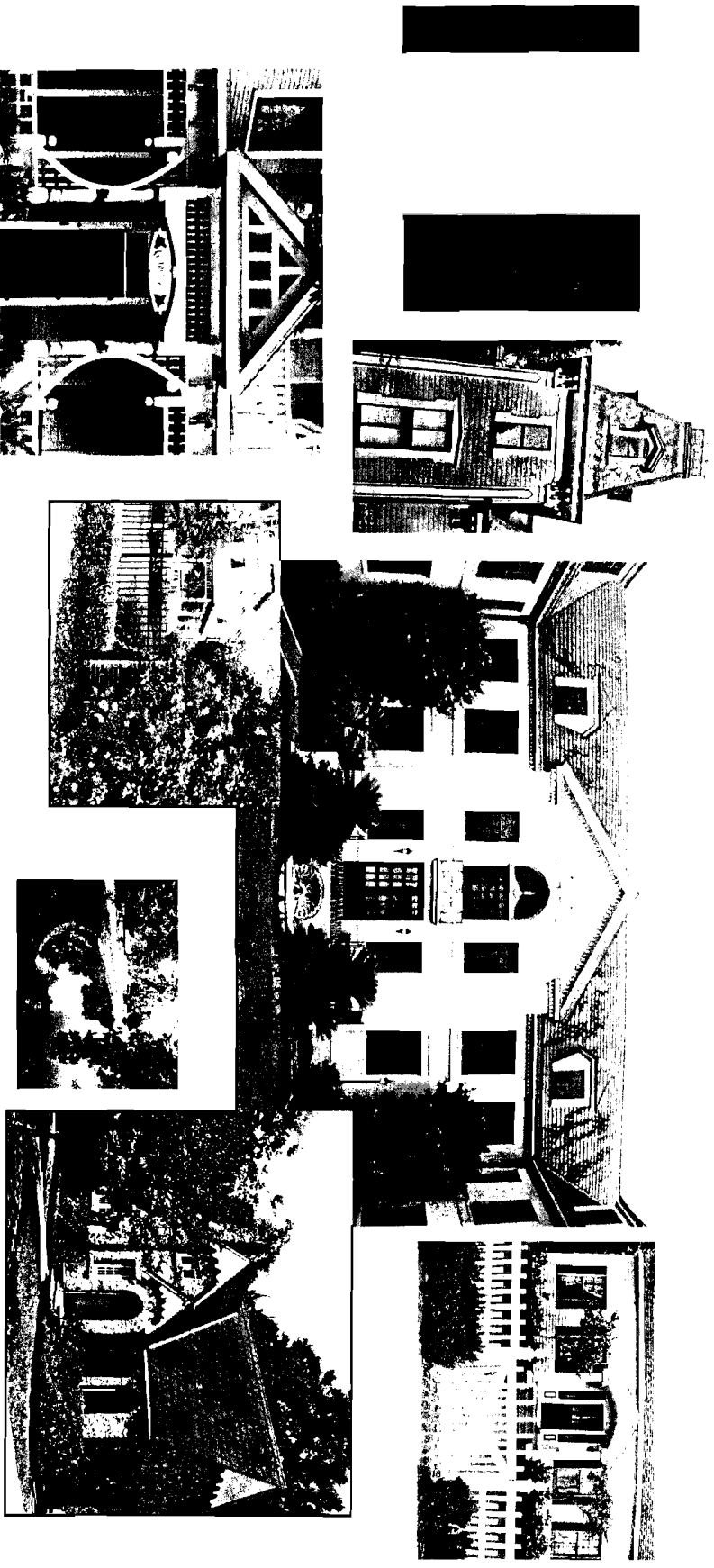


060773

Southeast Gainesville Historic District



In order to be listed on the local register and National Register of Historic Places, a district must be significant and possess integrity. According to the Local Historic Preservation Ordinance 30-112, a property must fulfill one or more of the following criteria:

IS ASSOCIATED WITH EVENTS that are significant to our local, state, or national history;

- **E**MBODIES THE DISTINCTIVE CHARACTERISTICS of a type, period, or method of construction;

- **R**EPRESENTS THE WORK OF A MASTER;

- **P**OSSESSES HIGH ARTISTIC VALUES; or

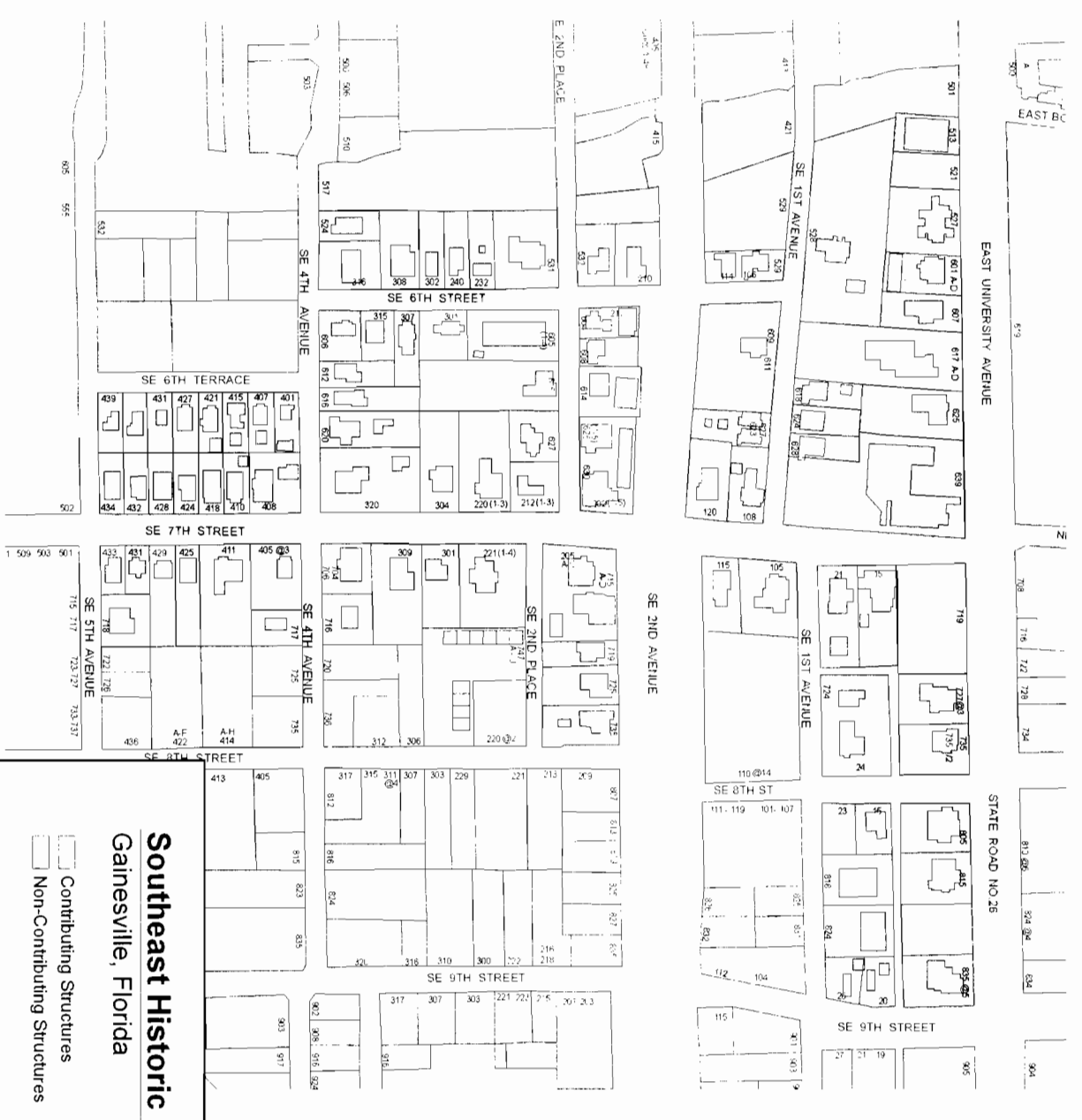
- **R**EPRESENTS A SIGNIFICANT AND **D**ISTINGUISHABLE ENTITY whose components may lack individual distinction.

NON-CONTRIBUTING AND CONTRIBUTING

- A **non-contributing** building, site, structure or object does not add to the historic architectural qualities, historic associations or archaeological values for which a district is significant because,
 - a) it was not present during the period of significance,
 - b) due to alterations, disturbances, additions, or other changes, it no longer possesses historic integrity reflecting its character at that time, or is incapable of yielding important information about the period (this pertains to an archaeological site), or
 - c) it does not independently meet the National Register of Historic Places criteria.
- A **contributing** building site, structure or object adds to the historic architectural qualities, historic associations or archaeological values for which a district is significant because,
 - a) it was present during the period of significance and
 - b) possesses historic integrity reflecting its character at that time, or is capable of yielding important information about the period (this pertains to an archaeological site), or
 - c) it independently meets the National Register of Historic Places criteria.

*Southeast Gainesville
Historic District*

**Approved by the City Commission on March 13, 1989
157ZON-88PB Ordinance #3522**



Southeast Historic District Gainesville, Florida

Contributing Structures

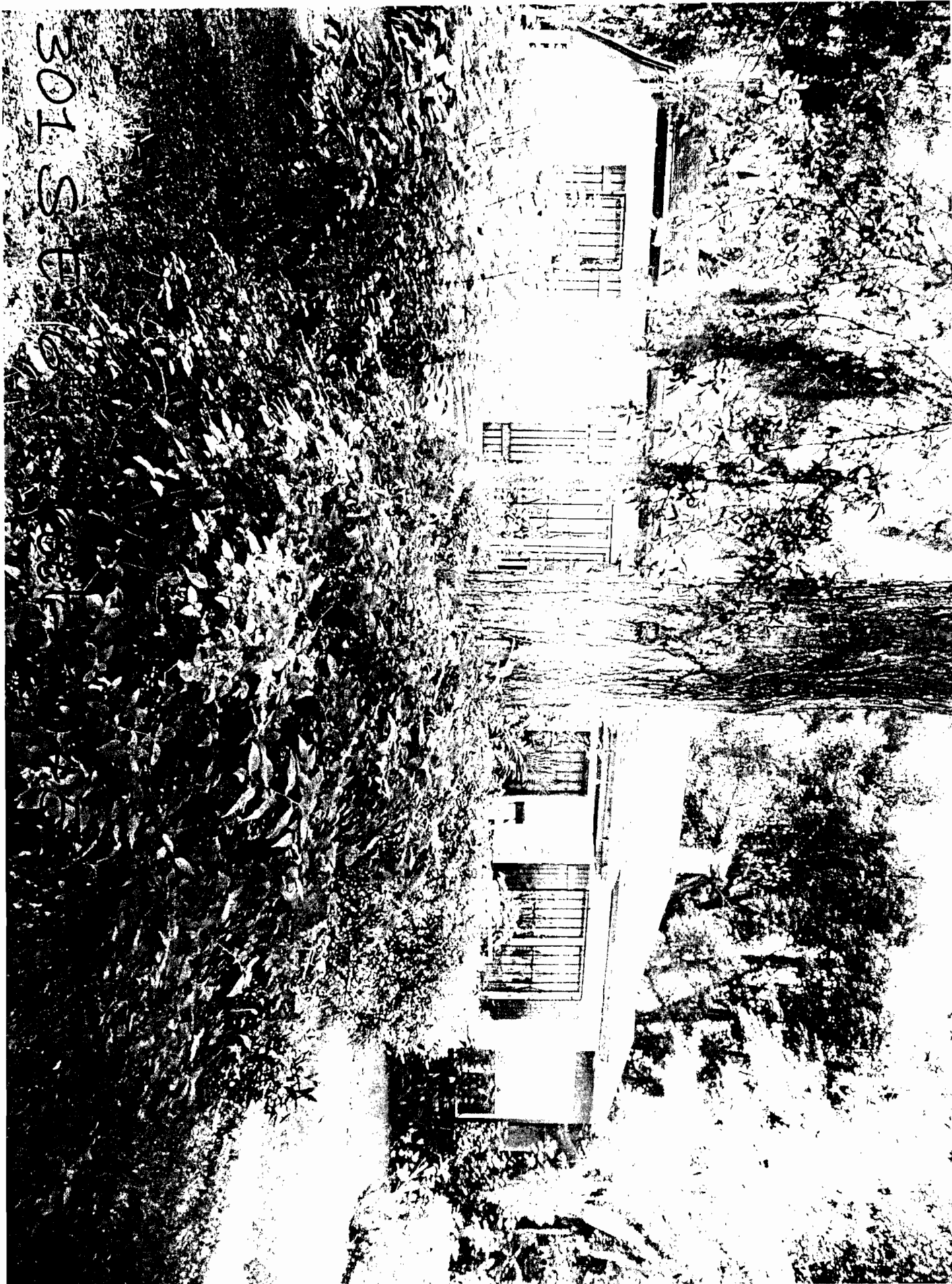
Non-Contributing Structures

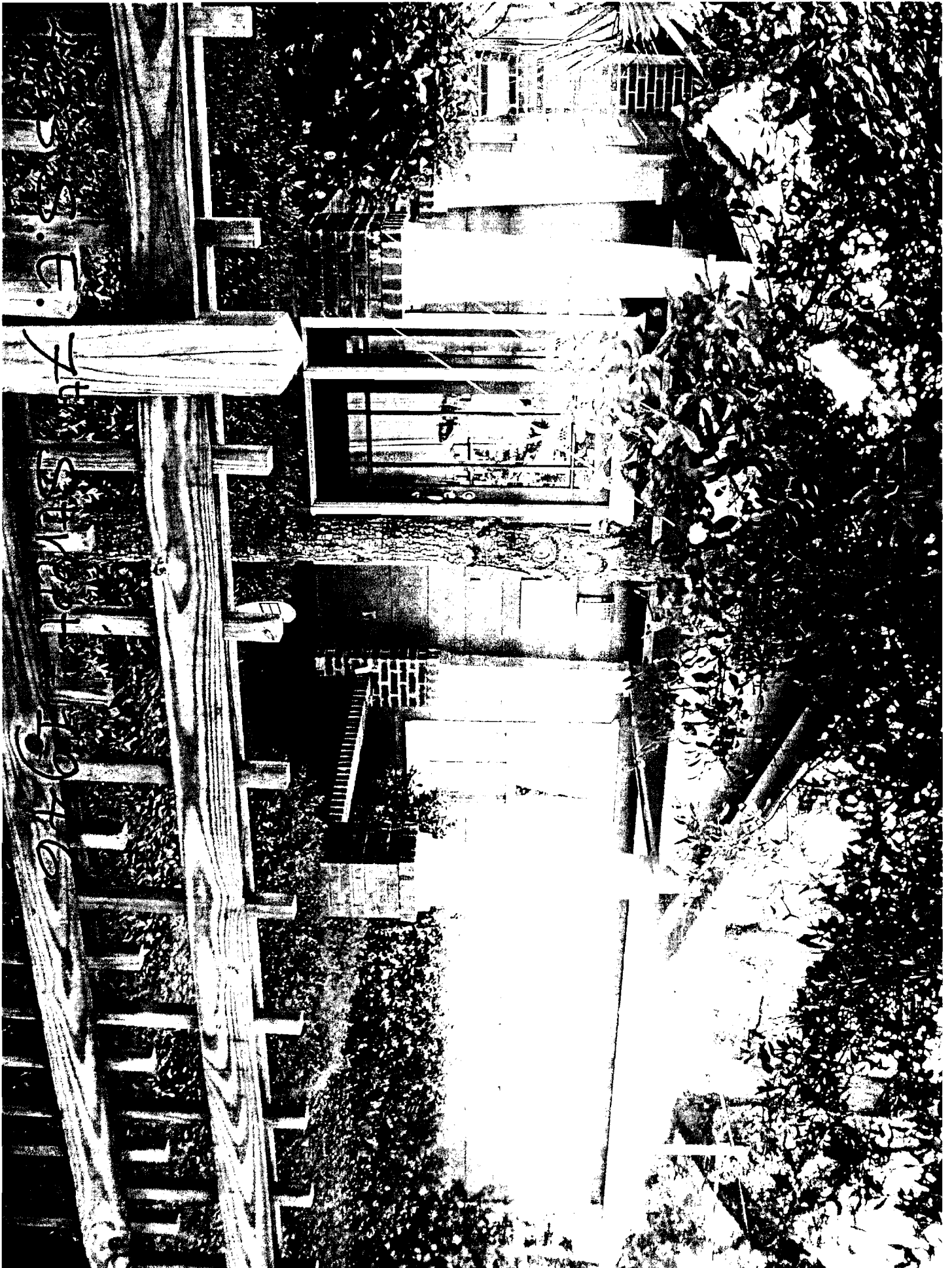
Southeast Historic District Boundary

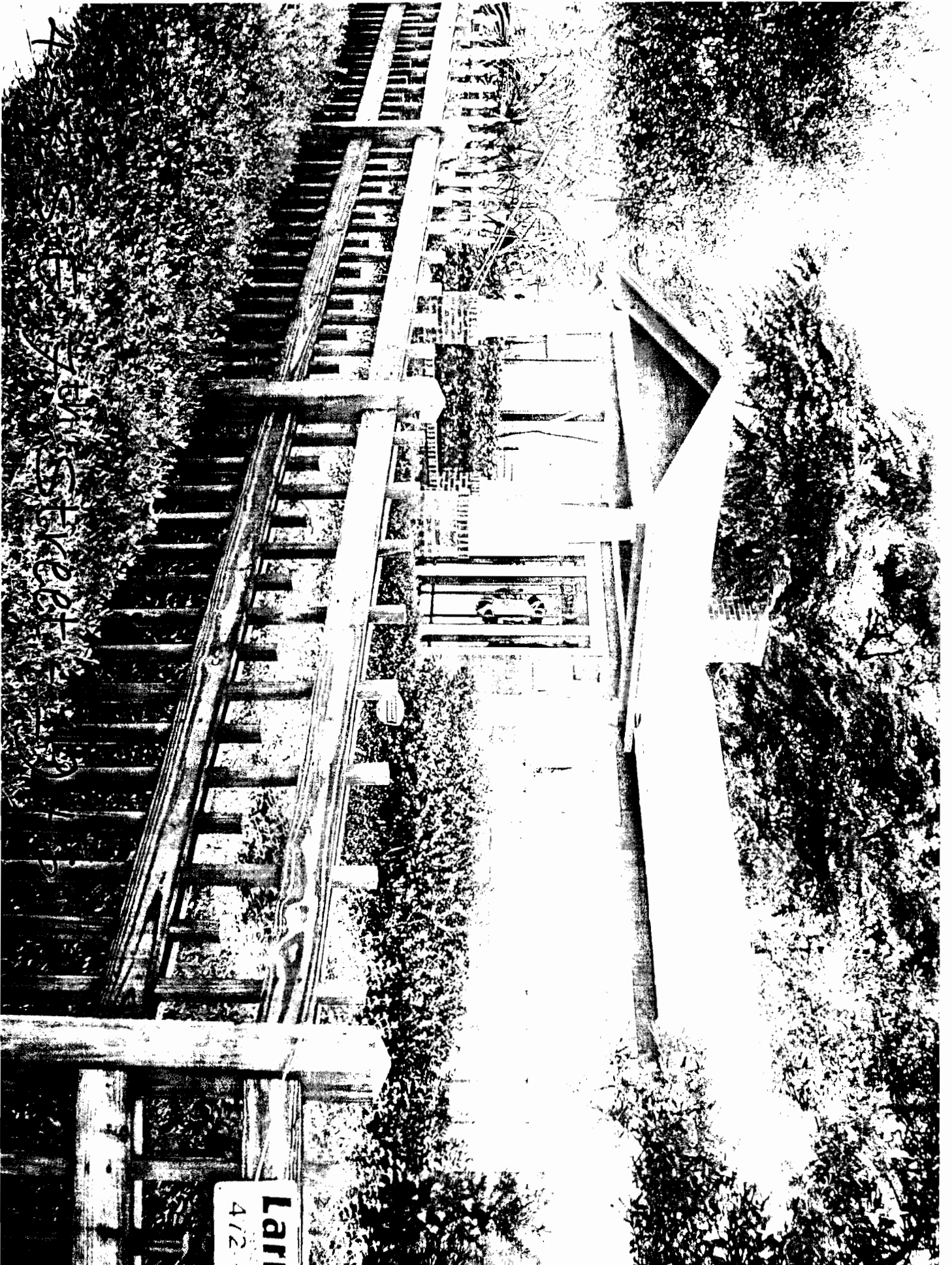
Change in Status (Principle Structure Only)

(Note: If you are interested in the status of a particular structure within the historic district, please check the "Contributing" and "Non-Contributing" categories on this map. Do not rely solely on the yellow change of status designation.)

301 S.E. 16







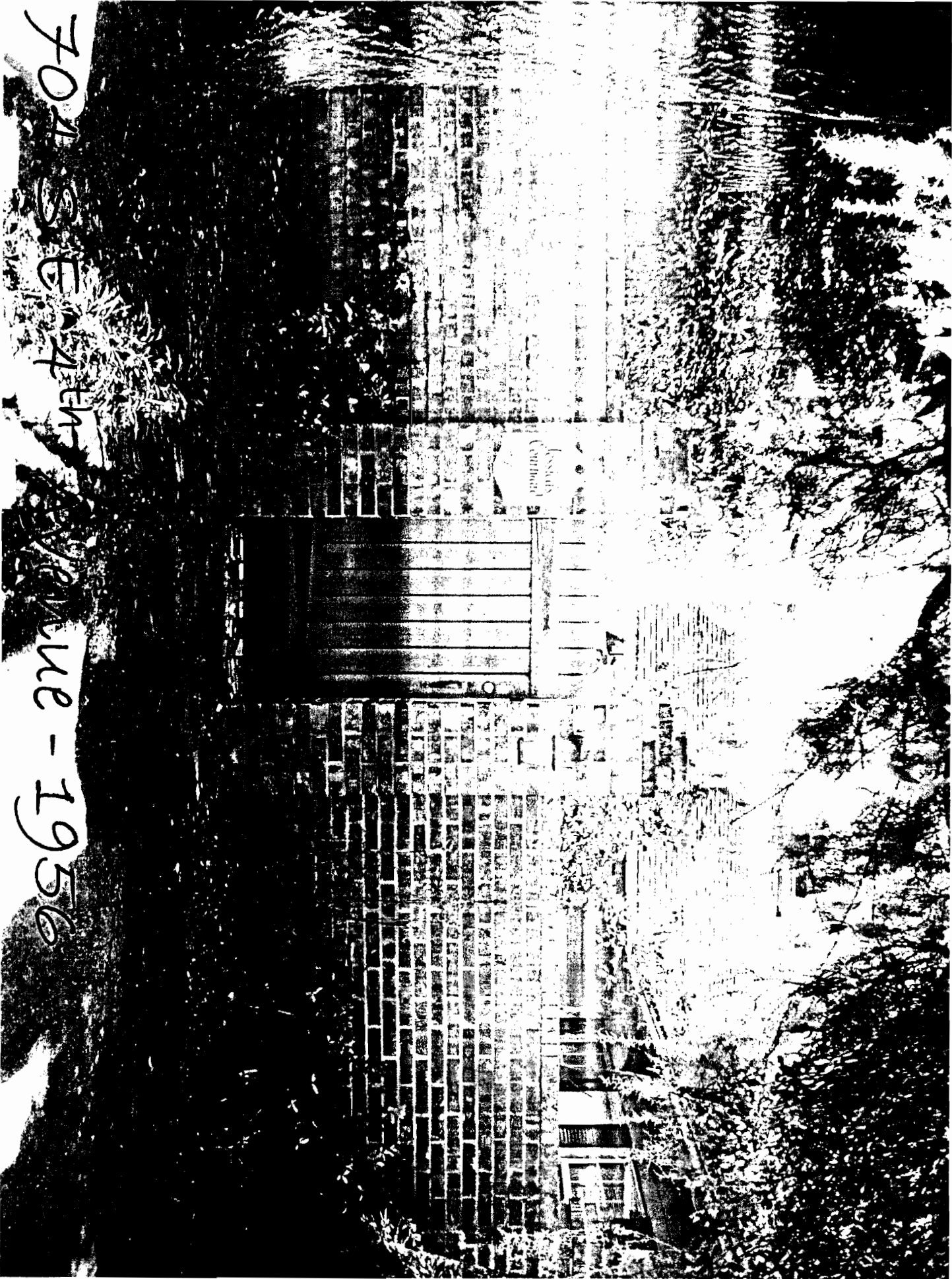
Lari
4/2



433 S.E. 7th Street - 1946

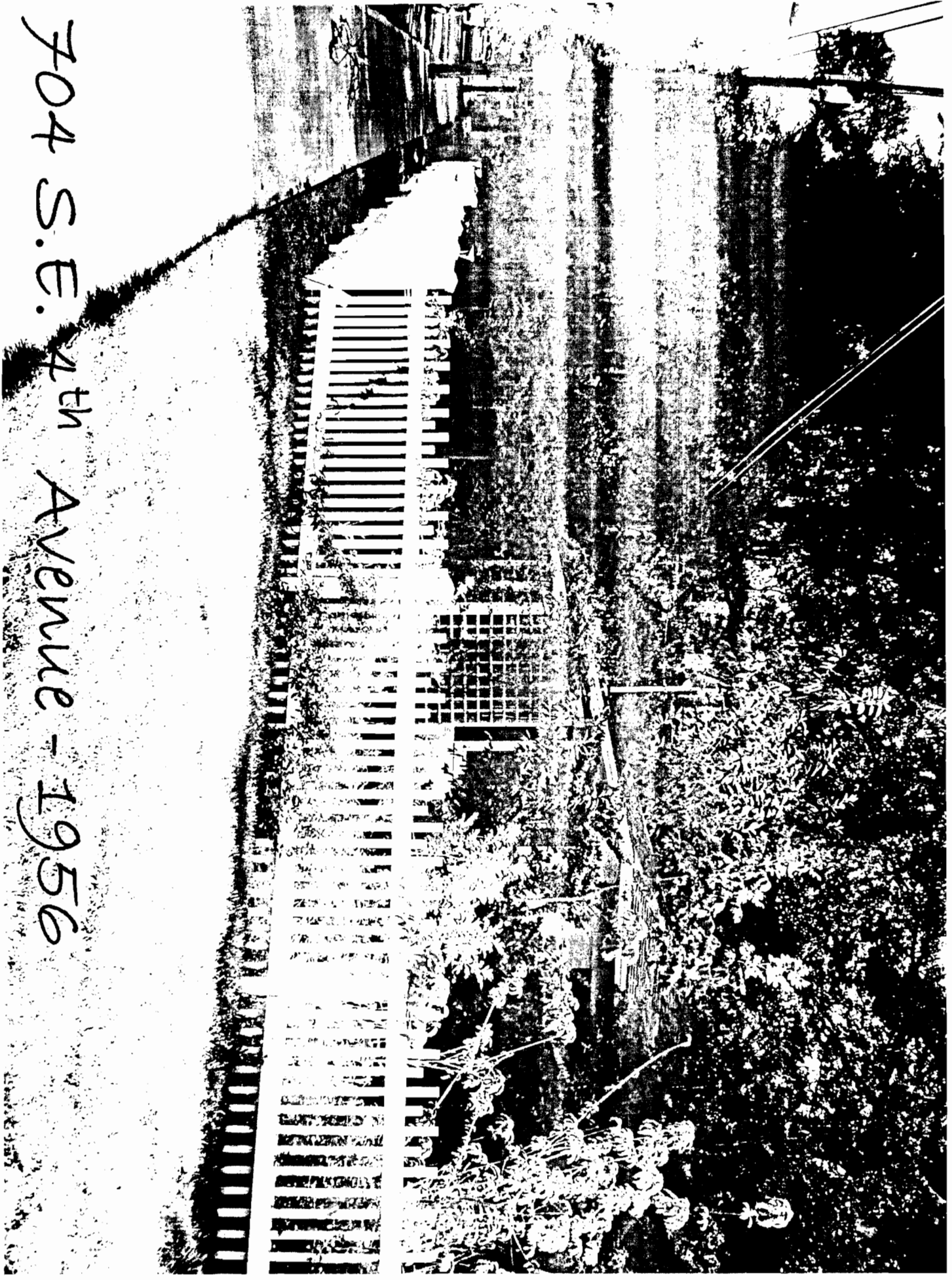


429 S. E. 7th Street - 1951



704 S.E. 4th Avenue - 1956

704 S.E. 4th Avenue - 1956





0436719