

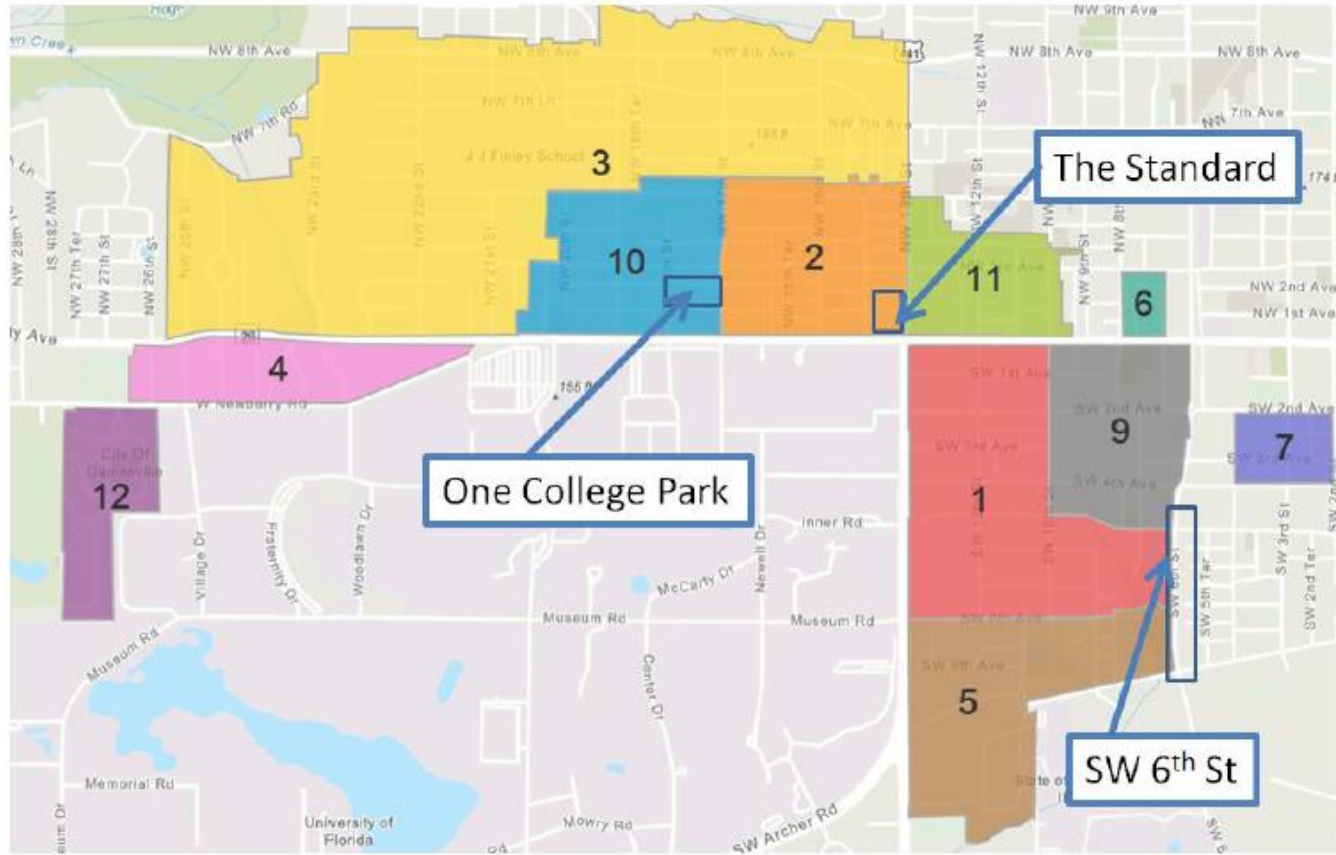


Public Works Department

# Controlled Vehicular Parking Program Modifications

## #160833

# Controlled Vehicular Parking Program Modifications



# Controlled Vehicular Parking Program Modifications

**The Standard - looking  
north at SW 13<sup>th</sup> Street  
and W. University  
Avenue**

- **Over 62K sq ft of retail/commercial**
- **430 residential units, 1200 bedrooms**
- **144 room hotel**
- **Parking Garage onsite**



# Controlled Vehicular Parking Program Modifications

## The Standard – Parking Garage

- Located on the north fringe of the complex parcel along NW 3<sup>rd</sup> Avenue
- 1,147 parking spaces available in garage
- Parcel located in Controlled Vehicular Parking zone 2 with 105 spaces only available

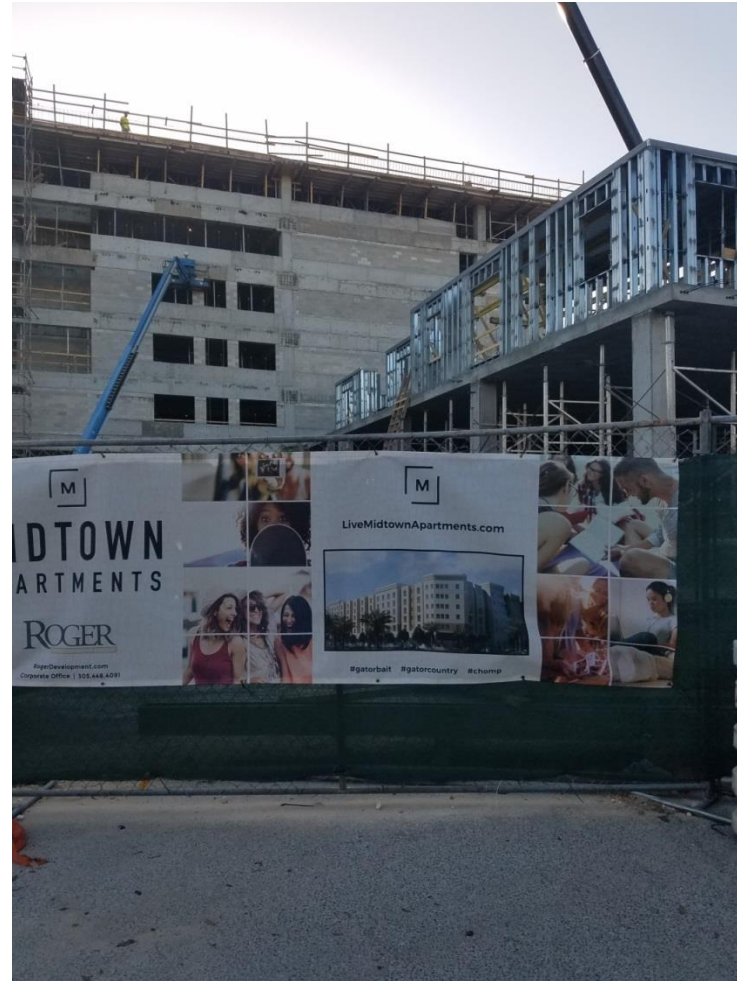




# Controlled Vehicular Parking Program Modifications

**One College Park –  
located in Midtown at  
NW 1<sup>st</sup> Avenue and NW  
17<sup>th</sup> Street**

- **14K sq. ft.  
retail/commercial  
space**
- **56 apartment units  
with 324 bedrooms  
and 270 dormitories**
- **Parking Garage with  
610 spaces onsite**
- **Parcel located in  
Controlled Vehicular  
Parking zone 10 with  
305 spaces only  
available**



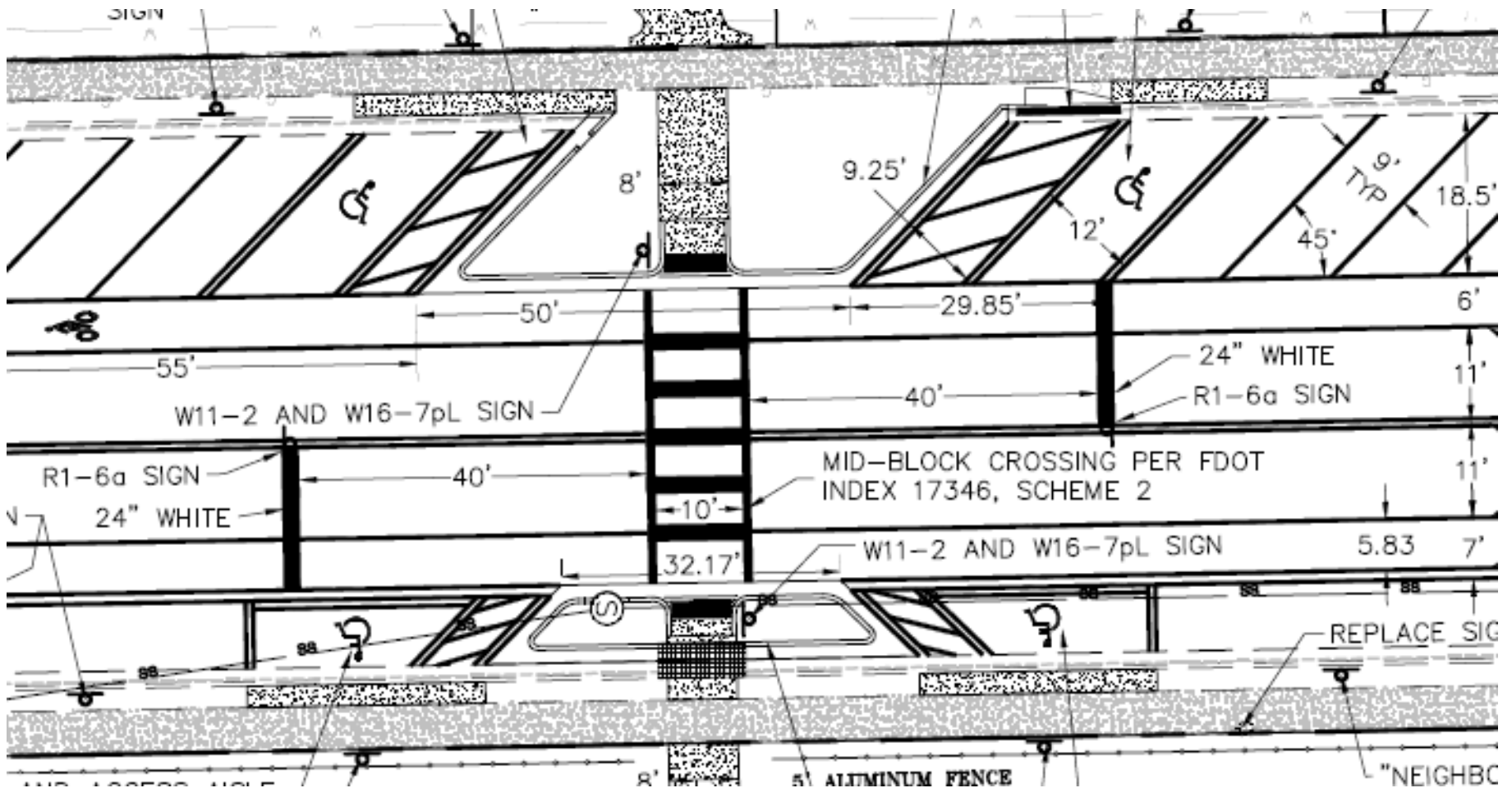
# Controlled Vehicular Parking Program Modifications

**SW 6<sup>th</sup> Street – Back in  
Parking from  
SW 5<sup>th</sup> Avenue to  
Depot Avenue –  
construction to start  
soon**

- **Project will add 106 parking spaces with five ADA spaces**
- **Will add to current Zones 1 and 9 in the Controlled Vehicular Parking Program**



# Controlled Vehicular Parking Program Modifications





# Controlled Vehicular Parking Program Modifications

Public Works recommends that the City Commission:

- Hold a public hearing
- Consider the findings in the best interest of the City as it pertains to parking availability
- Approve the exclusion of the Standard and One College Park from Zone 2 and Zone 10 respectively
- Approve the inclusion of SW 6<sup>th</sup> ST to Zones 1 and 9