

Paynes Prairie Sheetflow Restoration Project Update

Alice Rankeillor
Water/Wastewater Systems
Gainesville Regional Utilities

Recreation, Cultural Affairs, and
Public Works Committee
January 8, 2015



PAYNES PRAIRIE SHEETFLOW RESTORATION



GRUOO
THE YEARS OF SERVICE: 1963-2013

CITY OF GAINESVILLE
FLORIDA

Wharton-Smith, Inc.
Environmental Test Labs

JONES
EDMUNDS

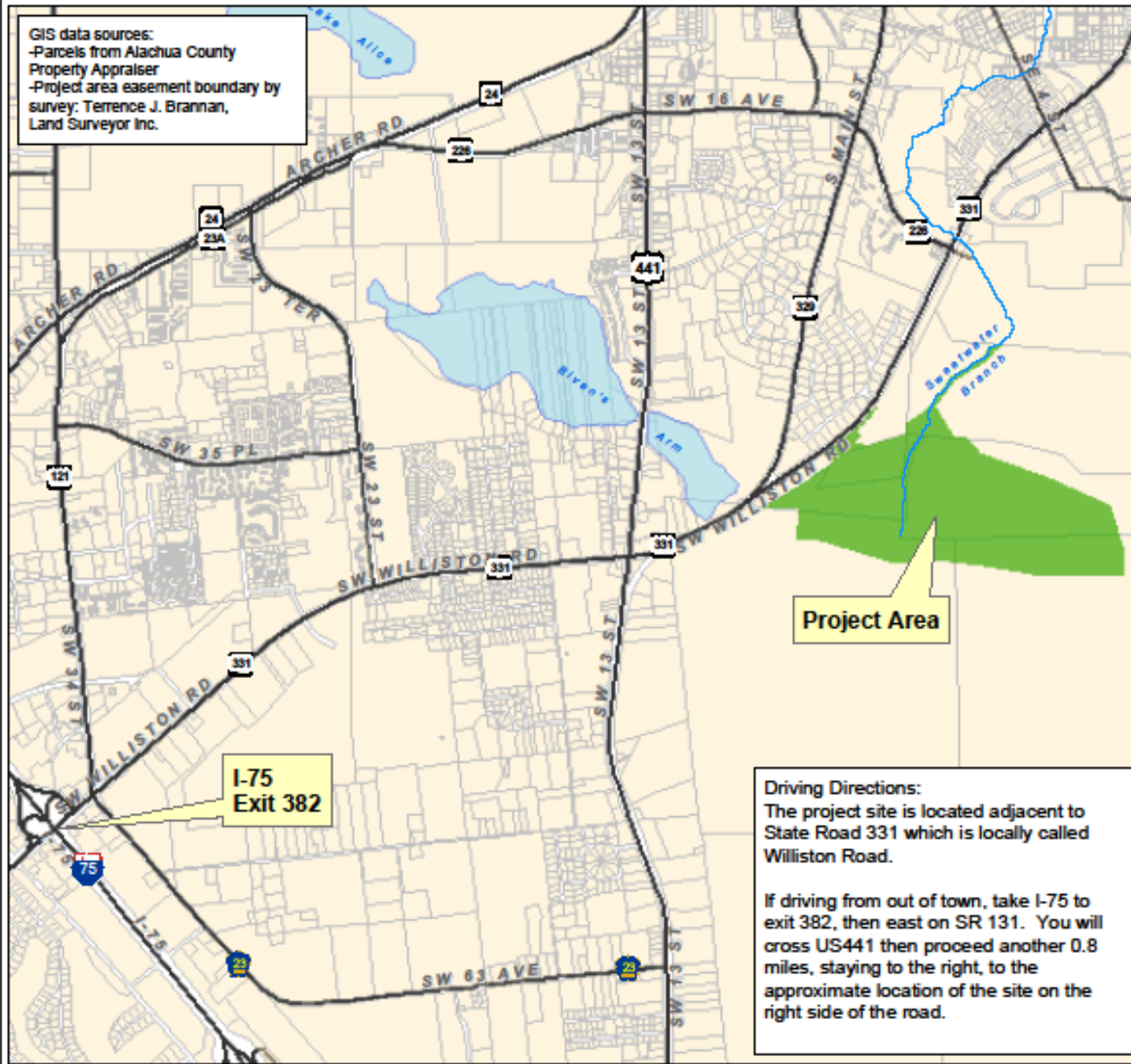
THEYRELL
BUSINESS
TECHNOLOGIES

JONES & JONES
CONSULTANTS

Wetland
Solutions, Inc.

Swisher, Inc.

GIS data sources:
 -Parcels from Alachua County
 Property Appraiser
 -Project area easement boundary by
 survey: Terrence J. Brannan,
 Land Surveyor Inc.



Project Area




**I-75
Exit 382**

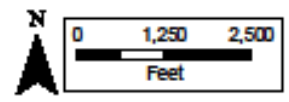
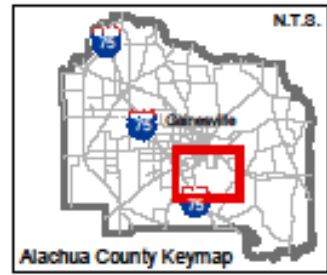
Driving Directions:
 The project site is located adjacent to State Road 331 which is locally called Williston Road.

If driving from out of town, take I-75 to exit 382, then east on SR 131. You will cross US441 then proceed another 0.8 miles, staying to the right, to the approximate location of the site on the right side of the road.

Exhibit G: Location Map Paynes Prairie Sheetflow Restoration

Legend

-  Project Area
-  Sweetwater Branch
-  Local Lakes



Historical Impacts



- **1800s to present:** Urbanization of Gainesville
 - Stormwater runoff
 - Trash & sediment
 - WW Effluent
 - Septic Tanks
- **1930s:** Sweetwater Branch channeled directly to Alachua Sink
 - 1,300 acres of wetlands impacted.
 - Direct flow path from Gainesville to Alachua Sink

Alachua Sink

Total Maximum Daily Load (TMDL) Adopted in 2006

	N Reduction (%)	N Reduction (lb/yr)
Main Street WRF	55%	48,000
Stormwater	45%	13,000
Other Sources	45%	145,000



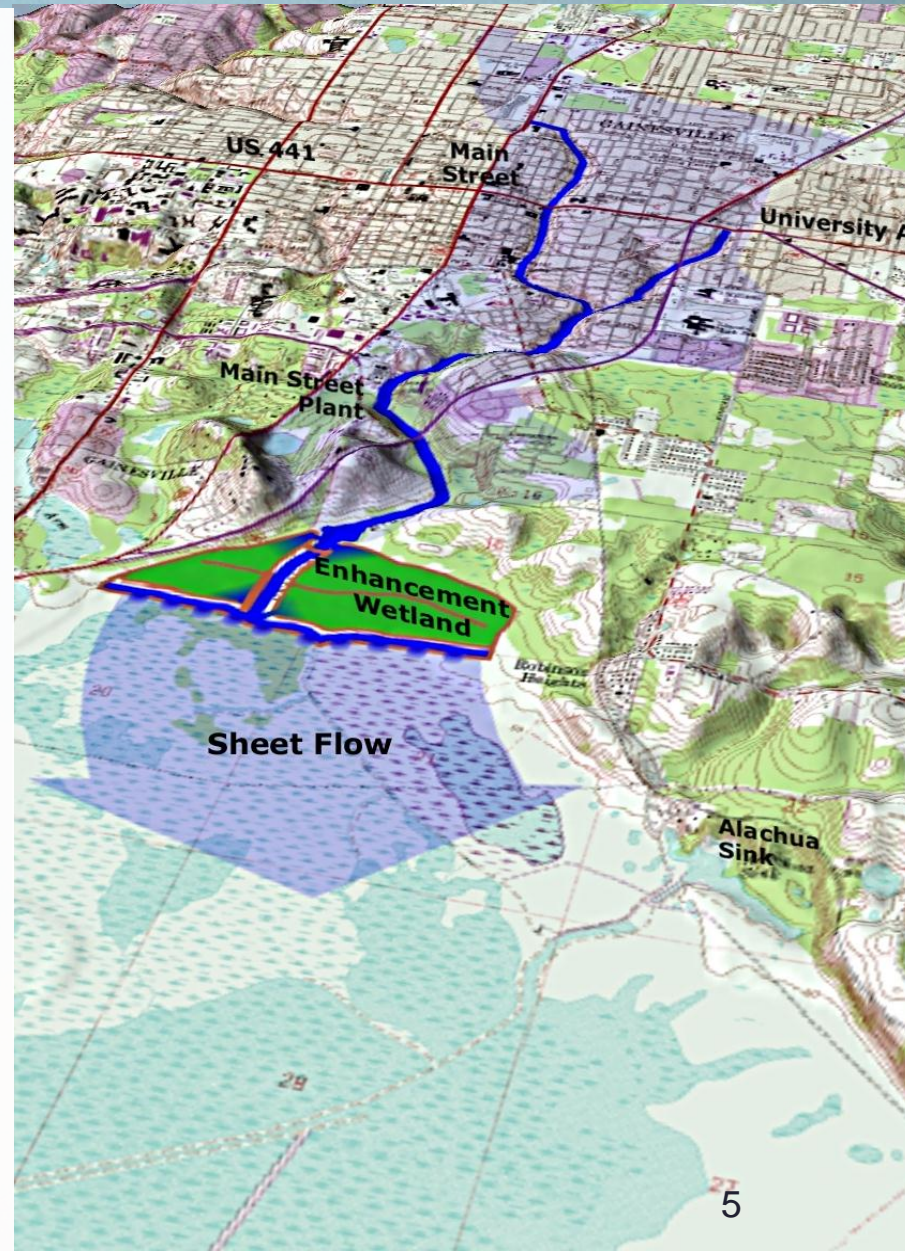
Environmental Benefits

Water Quality Benefits

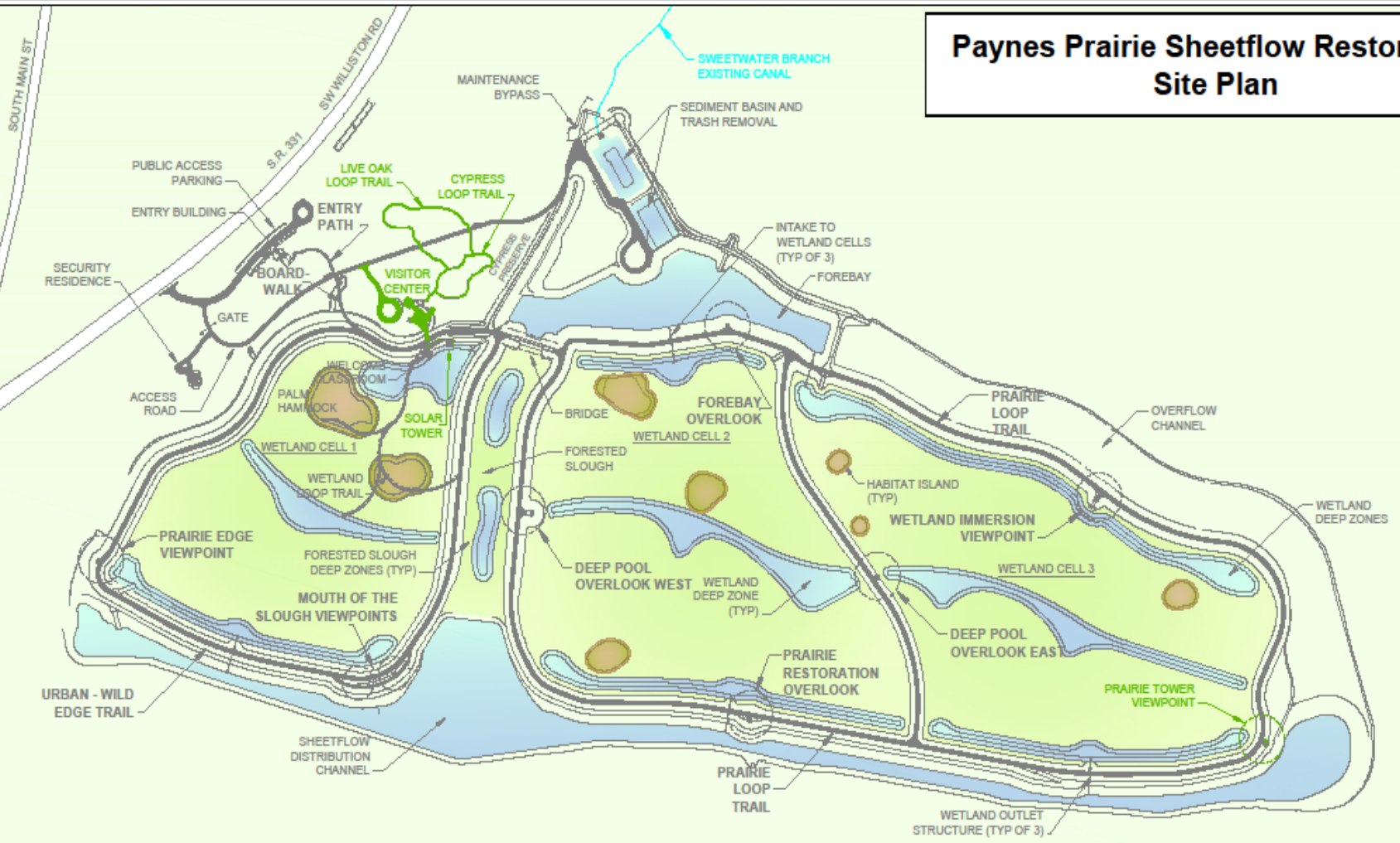
- Exceeds total N TMDL
- Achieves background total N and P on Prairie
- Removes sediment and trash

Hydrologic Restoration Benefits

- Restores Sweetwater Branch sheetflow to about 1,300 acres
- Removes 2 miles of Sweetwater Branch Canal Conservation
- Adds 264 acres to the State Park



Paynes Prairie Sheetflow Restoration Site Plan

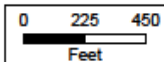


Current Construction Contract

- | | | | | | |
|--|-----------------------------------|--|---------------|--|--------------------------|
| | Access Road/Parking | | Berm Trails | | Viewpoints/
Overlooks |
| | Entry Building | | Nature Trails | | Shallow Water |
| | Security Residence | | Boardwalk | | Deep Water |
| | Sediment & Trash Removal Facility | | Bridge | | Habitat Island |

Future Park Improvements

- Visitor Center Complex
- Solar Viewing Tower
- Prairie Tower Viewpoint



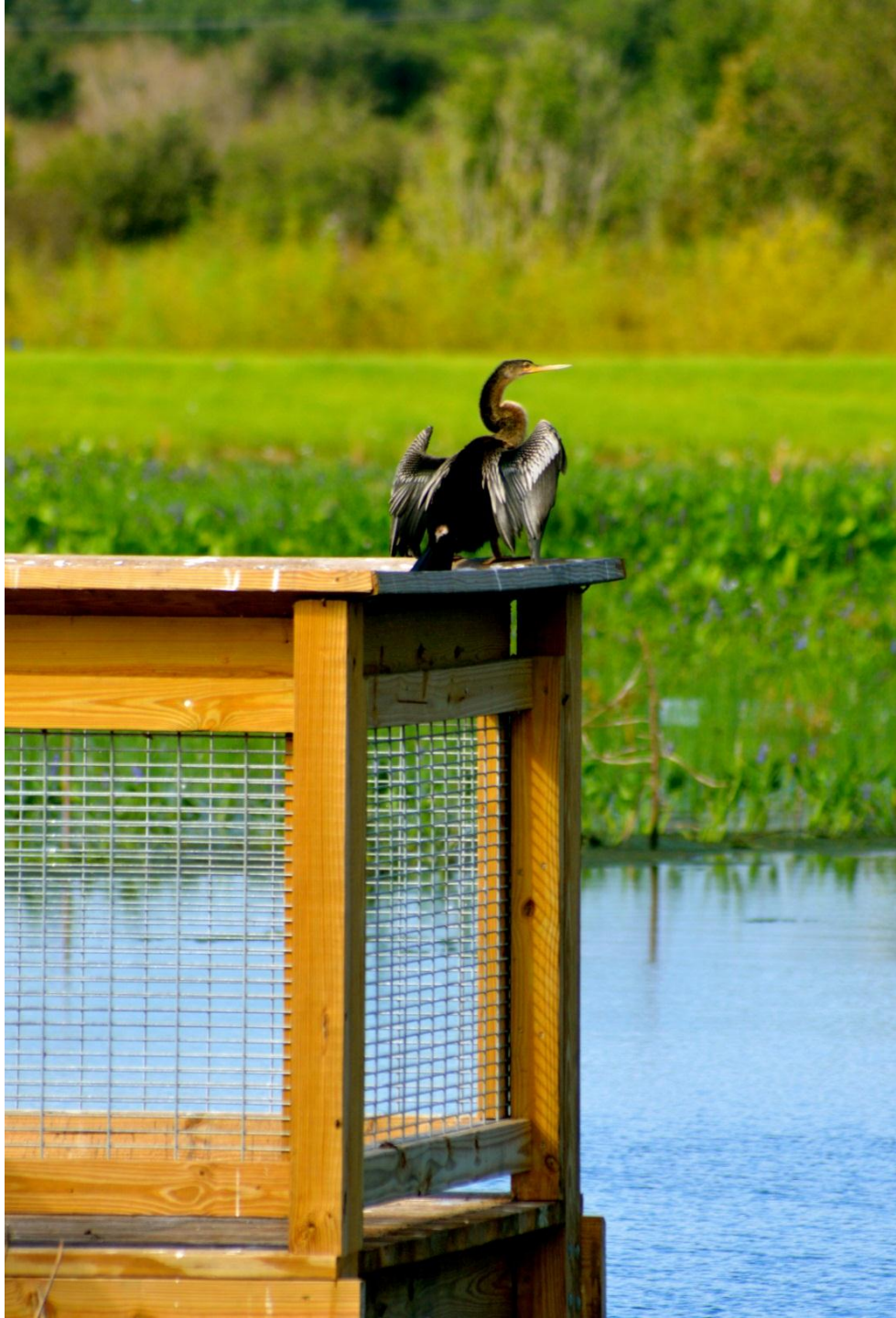


City Commission History

- April 2007 Project Concept Approved
- June 2010 30 % Plans Presentation Received
- October 2011 60 % Plans Presentation & Park Operation Referral to RCAPW Committee
- January 2011 Construction Contract Approval & Update on EPA Regulations
- June 2012 RCAPW Committee Recommendation on Management of Public Use Facilities
- July 2012 Final Plans Presentation and Inclusion of FY 13 Unfunded Increment Request (\$102,000) for Park Operation in PRCA Budget











Operation of Public Use Facilities

Offset Operational Costs by Collection of Entrance Fees

- Estimated \$35,000 in annual revenue

Short Term Options (FY 15)

- Do not open the park, continue group tours by special arrangement
- Open the park on weekends starting May 1, 2015 requires \$51,492 special increment
 - Special increment includes: staff, contractual services, plus one time vehicle purchase
 - GRU will assist with scheduling group tours and providing tour guides



USGBC Tour July 18, 2014

Operation of Public Use Facilities

Long Term Options

- Operation by City of Gainesville Parks and Recreation requires \$52,100 – \$126,800 PRCA annual budget increment
- Potential option for full time operation by Florida Division of Parks and Recreation being discussed. Budget increment to be determined



Questions?

