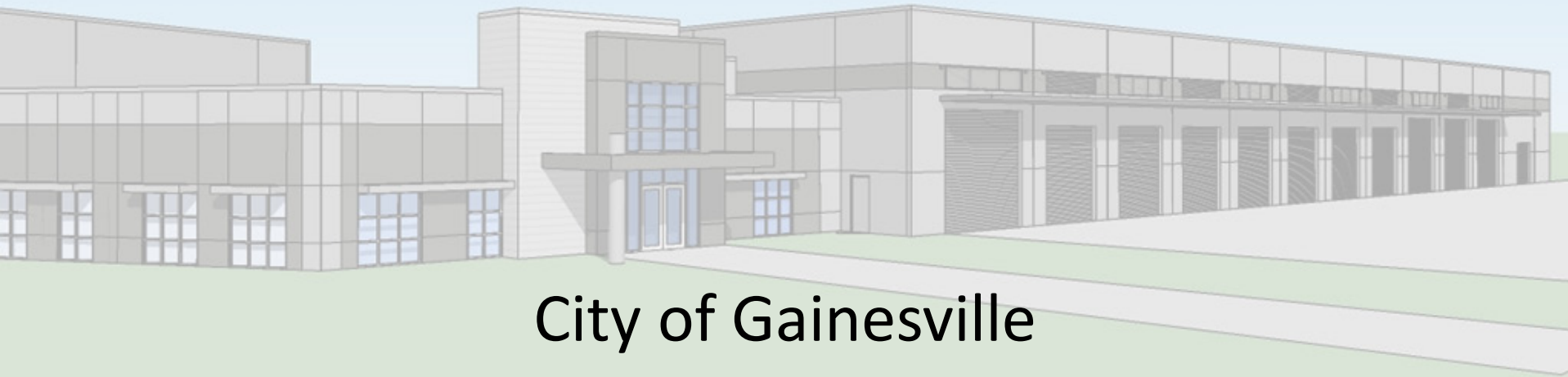


LEGISLATIVE #

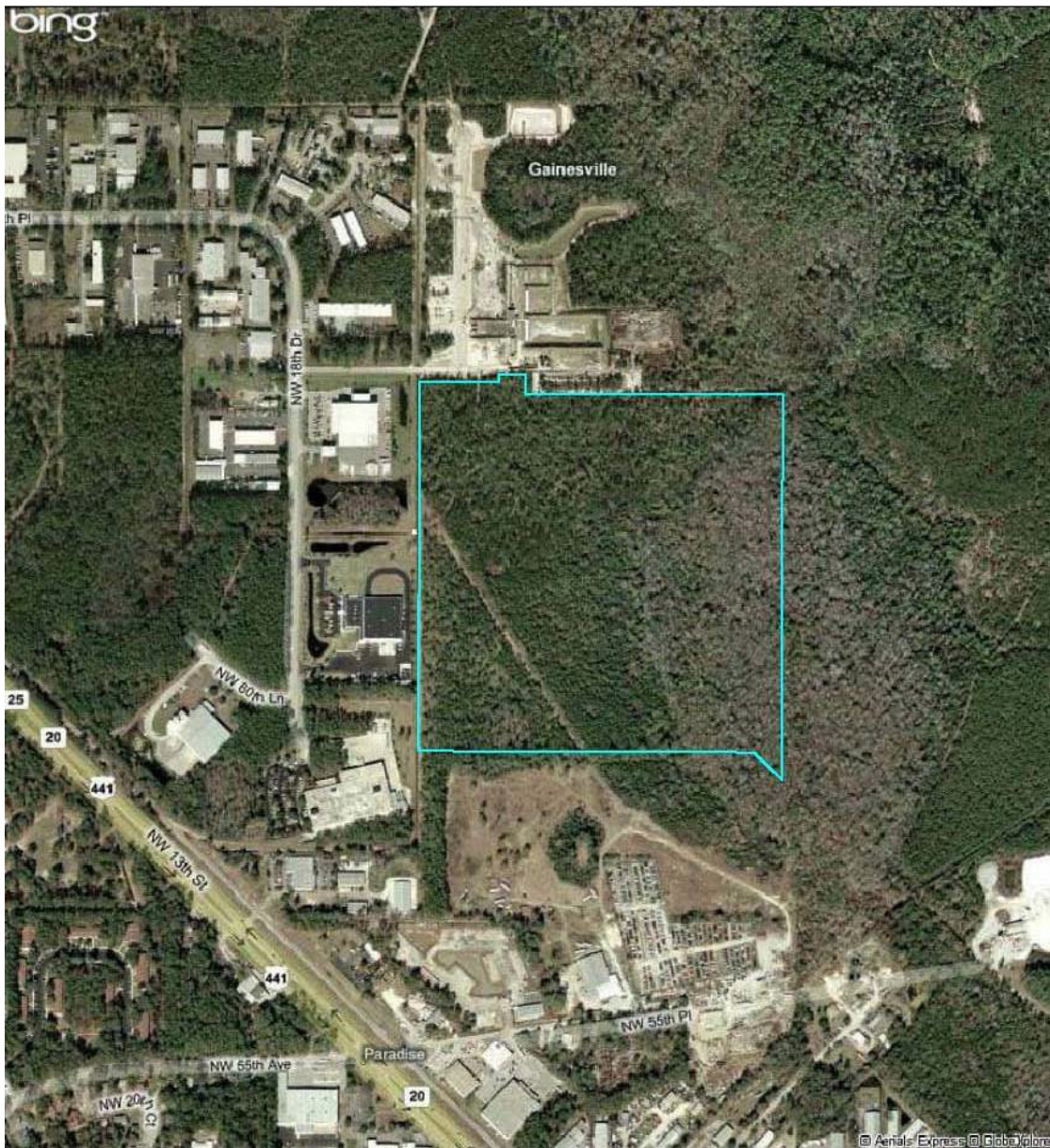
100564



City of Gainesville  
Fleet Maintenance and  
Materials Management Facility  
30% Design Presentation

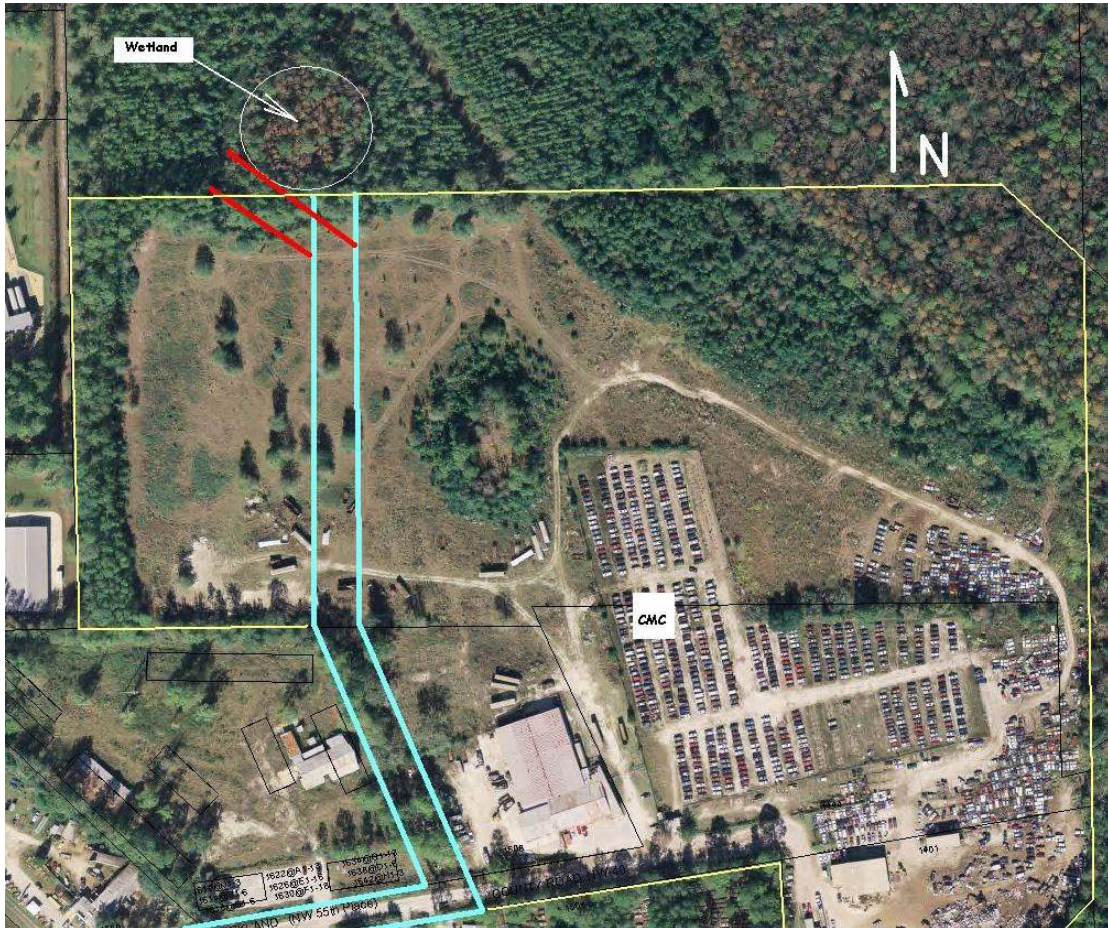
#100564

## Project Site





## Project Site

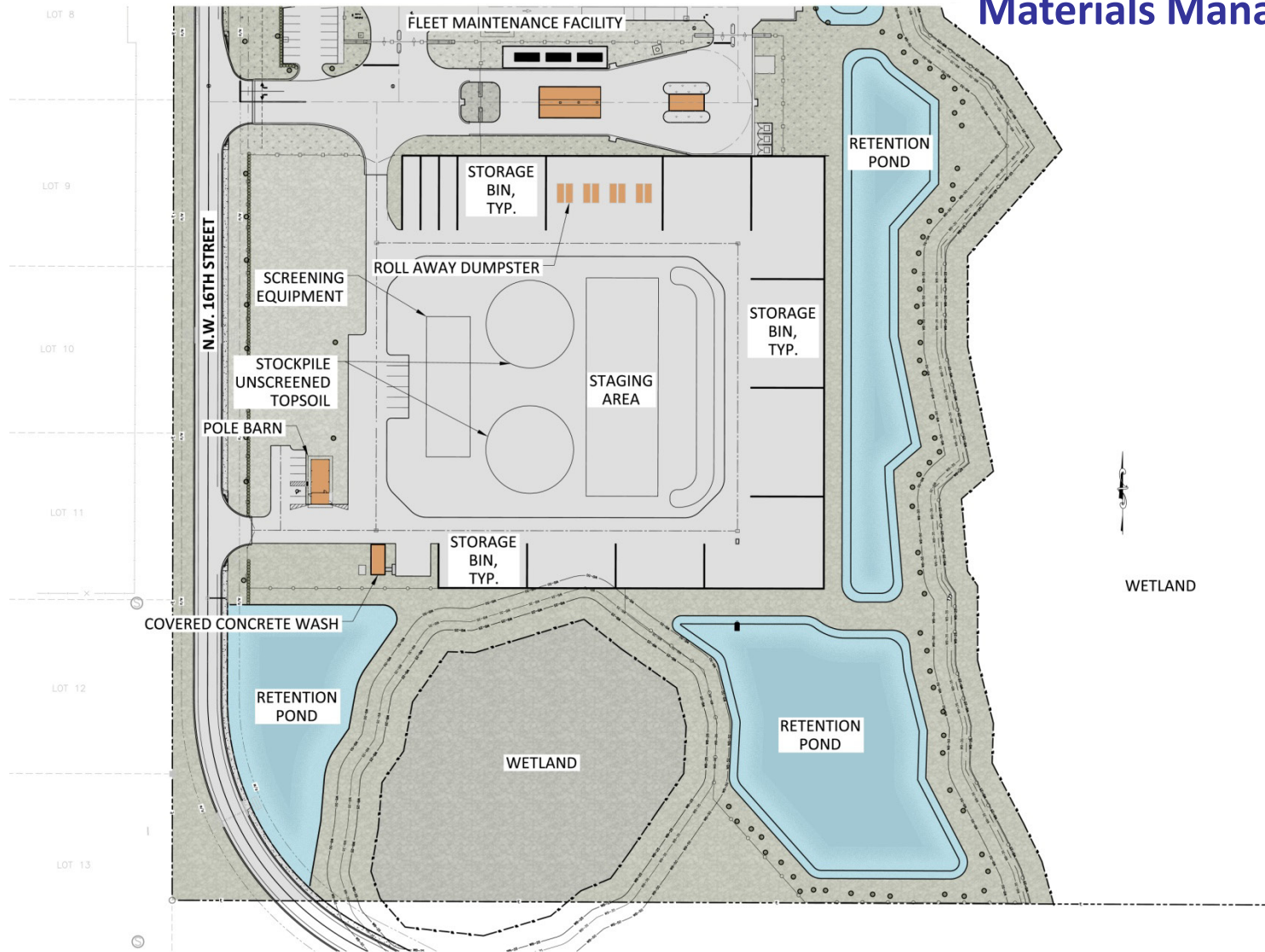


# Site Plan

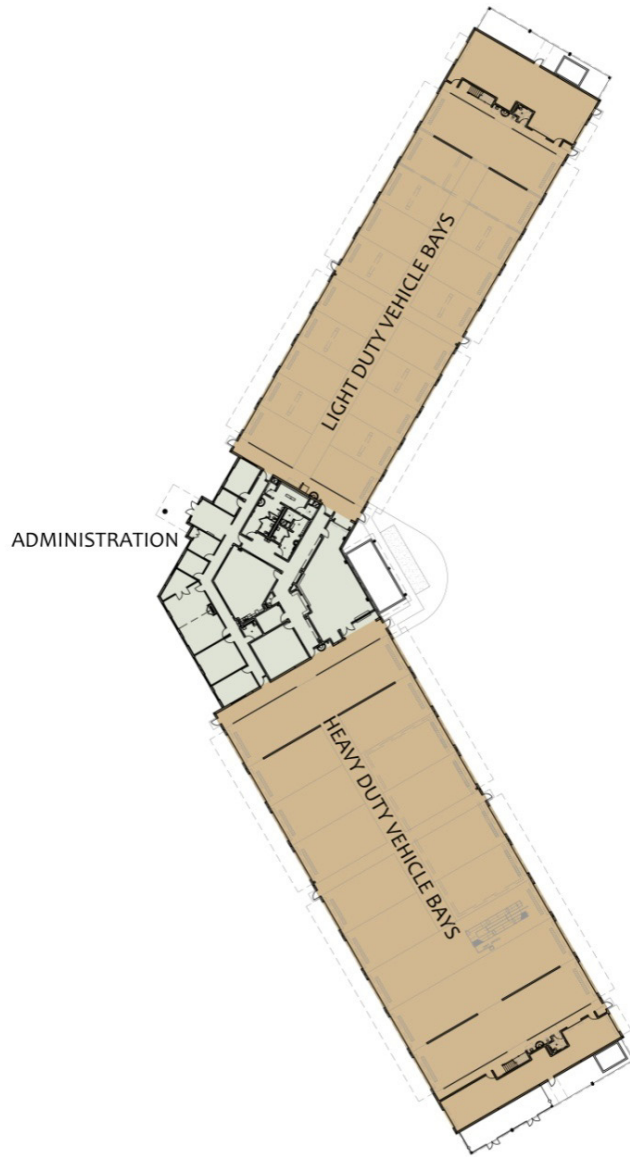




# Materials Management Facility Site Plan



## Floor Plan



- Dedicated Service Bays for heavy and light duty
- Drive thru service ticket lane
- Centrally located administration
- Parts storage accessible to both service areas
- Mezzanine storage at north and south ends
- Designed for LEED certification

## Building Elevation

