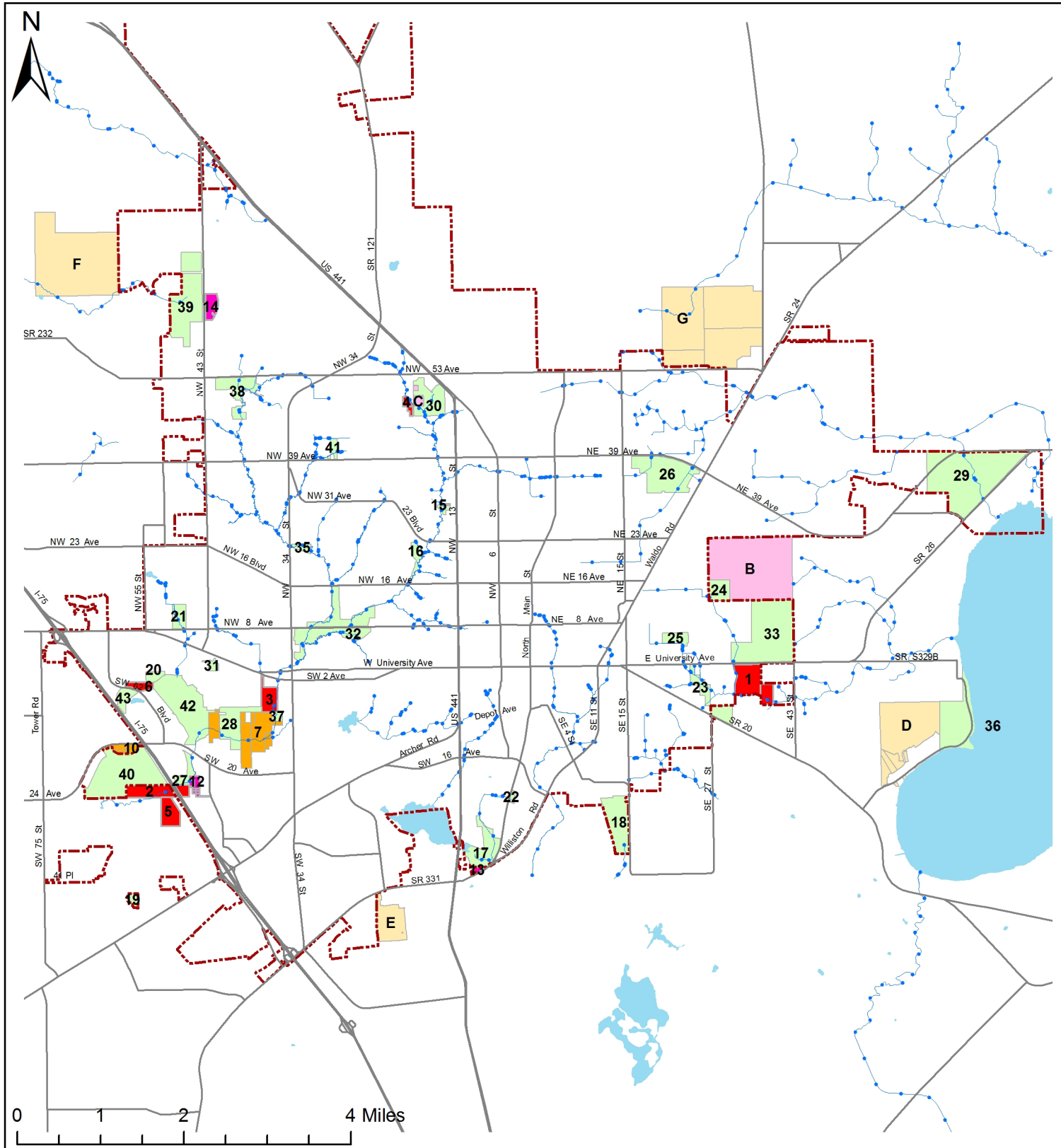


**LEGISLATIVE**

**# 110258C**



## City-owned Conservation Land and Priority Acquisitions

- Nature Park Boundary
- Top Priority Lands
- Second Priority Lands
- 2012 Additions
- Possible Less-Than-Fee
- Recommended by ACT
- City of Gainesville City Limits
- Lakes
- Creeks
- Major Roads

### Priority Acquisition Key:

1. Johnson/Demetree
2. Barnes/Kamalah
3. Burch
4. Jurecko
5. Barnes #2
6. Rubric
7. Hogtown Creek Floodplain
10. Henderson
12. Forest Park Additions
13. Bivens Arm Additions
14. San Felasco Wetland
15. 29th Road Park Additions
- A. Wacahoota (not shown)
- B. Morningside Buffers
- C. HC Headwaters Easements
- D. Newnan's Lake SW Corridor
- E. Serenola Forest
- F. Blues Creek Ravine
- G. Hatchett Creek (Cox&Moore)

### Park Land Key:

16. Alfred A. Ring
17. Bivens Arm
18. Boulware Springs
19. Broken Arrow Bluff
20. Clear Lake
21. Cofrin
22. Colclough Pond
23. Cone Park SW
24. Crawford
25. Duval
26. Flatwoods
27. Forest
28. Green Acres
29. Gum Root
30. HC Headwaters
31. John Mahon
32. Loblolly Woods
33. Morningside
34. 29th Road
35. 34th Street
36. Palm Point
37. Pinkoson
38. Possum Creek
39. San Felasco
40. Split Rock
41. Springtree
42. Sugarfoot
43. Terwilliger Pond