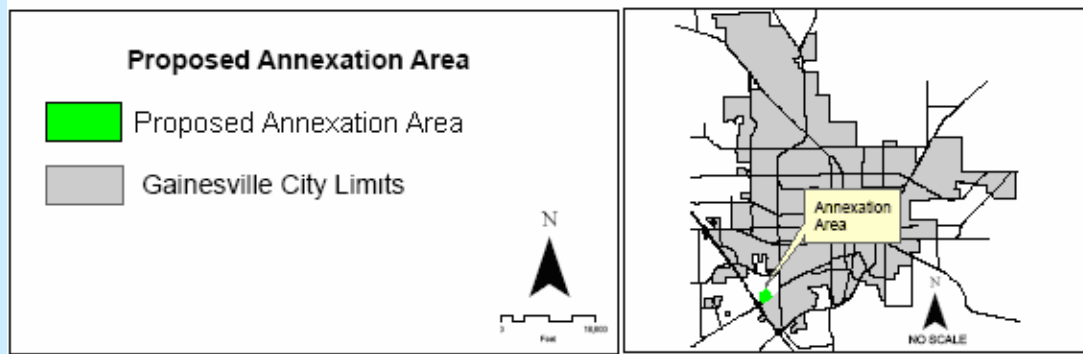
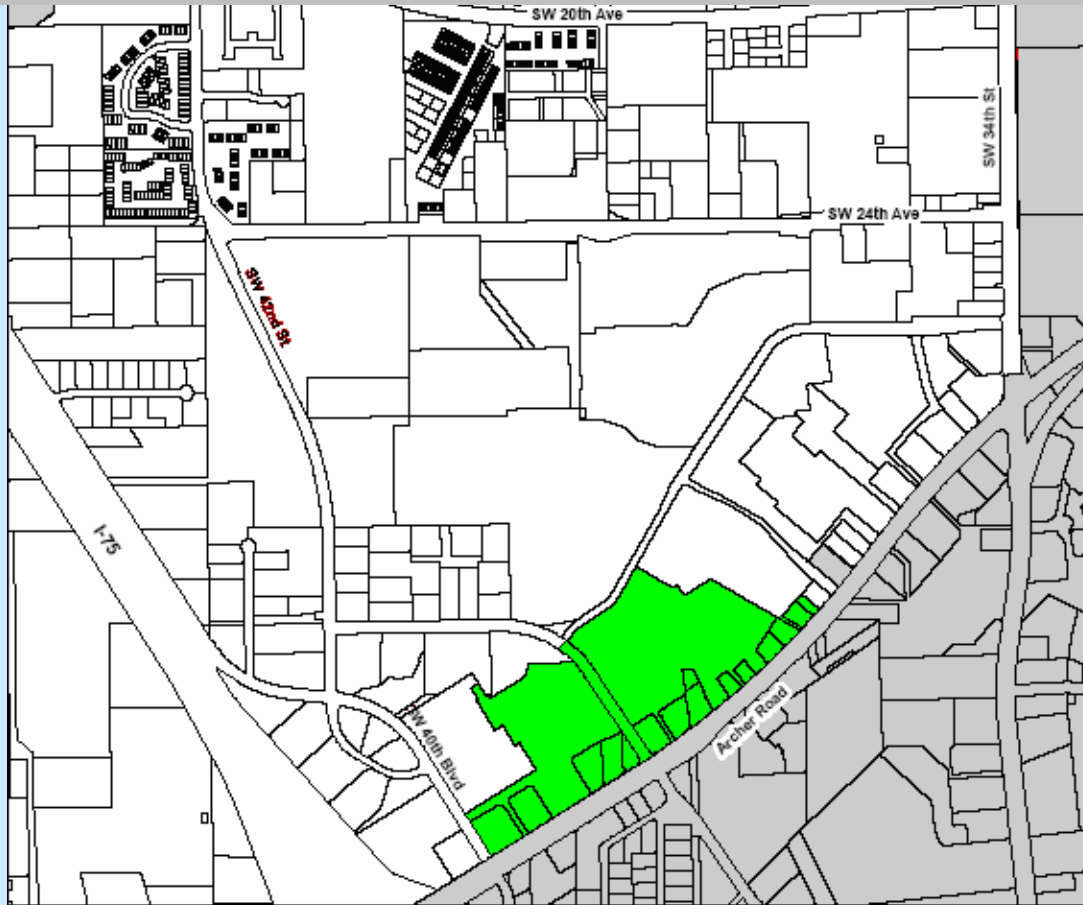
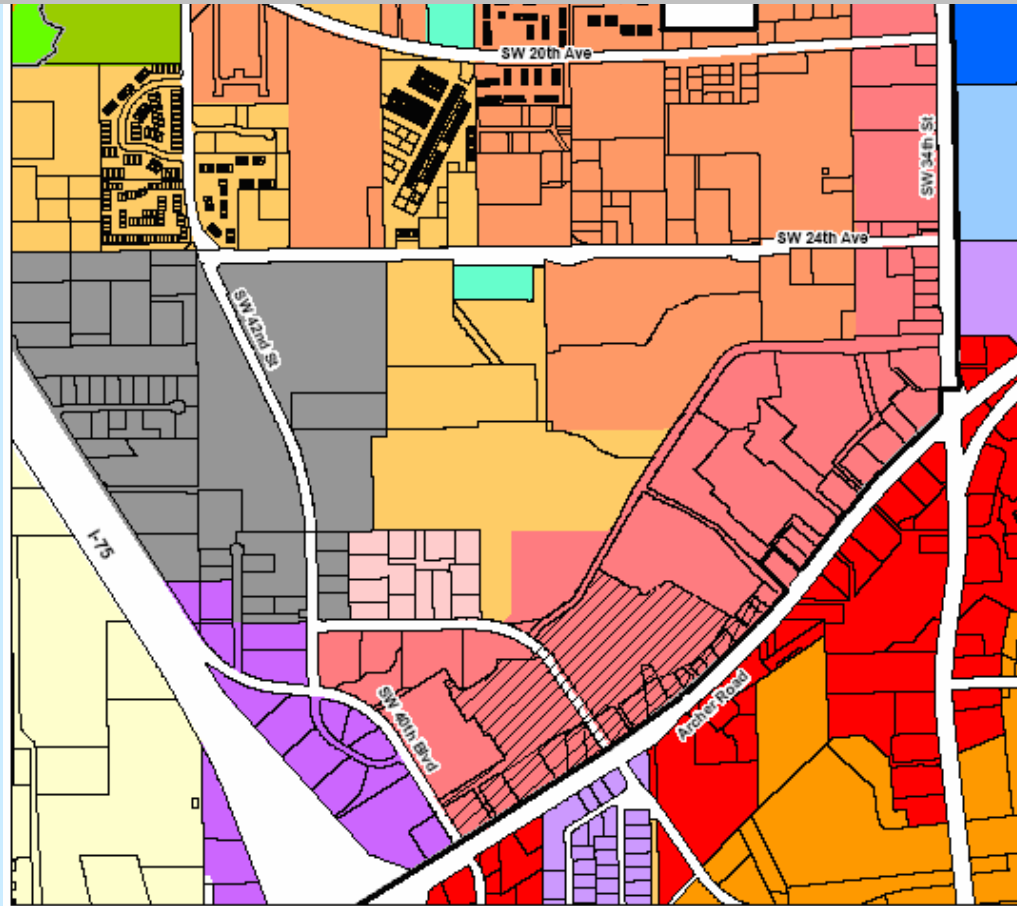


Butler Plaza Southwest Area



Butler Plaza Southwest Area



Proposed Annexation Area Land Use

Alachua County Land Use Categories

- Commercial
- Tourist/Entertainment
- Institutional
- Heavy Industrial
- Low Density Residential
- Medium Density Residential
- Medium High Density Residential
- High Density Residential
- Recreation
- Office/Residential

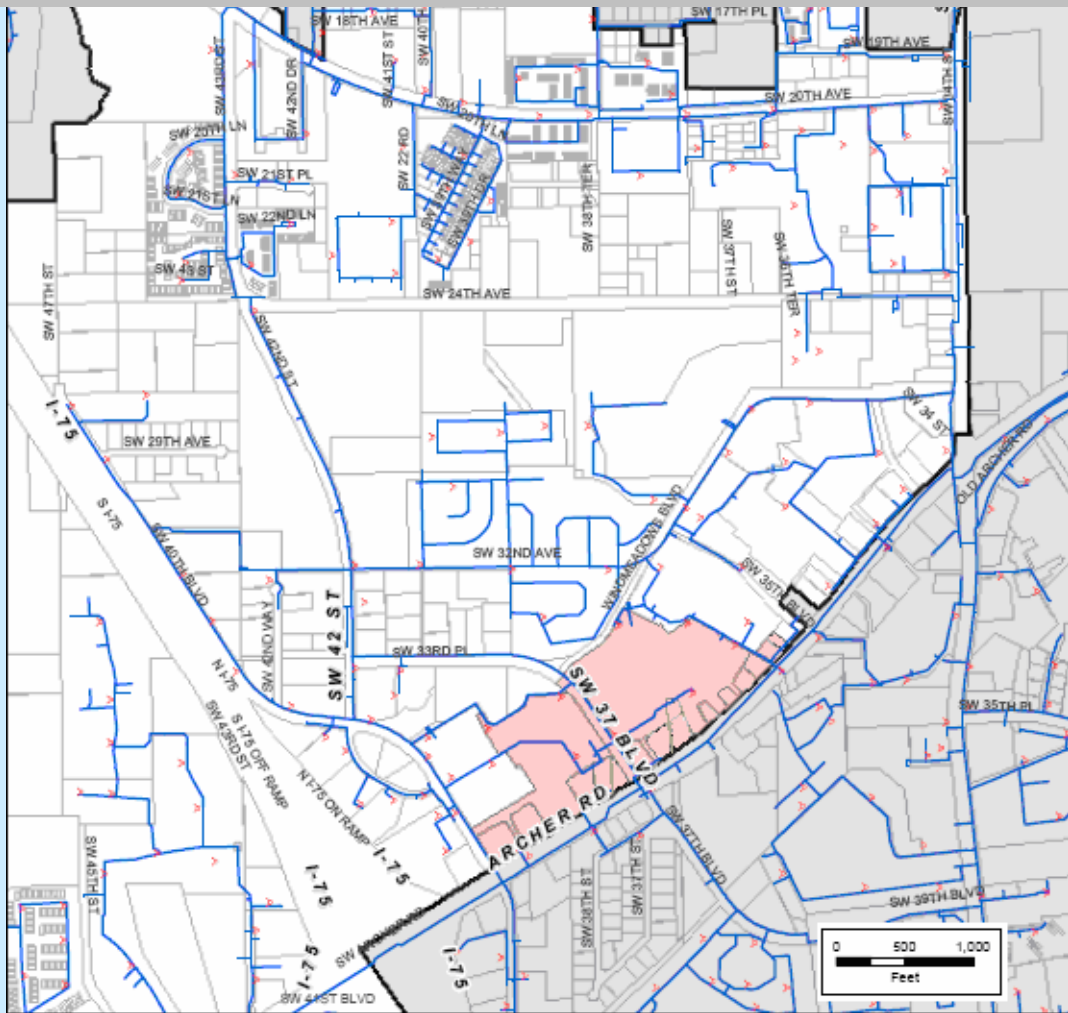
- Gainesville City Limits
- Proposed Annexation

City of Gainesville Land Use Categories

- Residential Low Density
- Residential Medium Density
- Mixed Use Low
- Commercial
- Education
- Public Facilities
- Conservation



Butler Plaza Southwest Area



Water Utility Facilities Near Proposed Annexation Area

Butler Plaza, et al

Legend

- Proposed Annexation Area
- Gainesville City Limits
- Water Main
- Hydrant

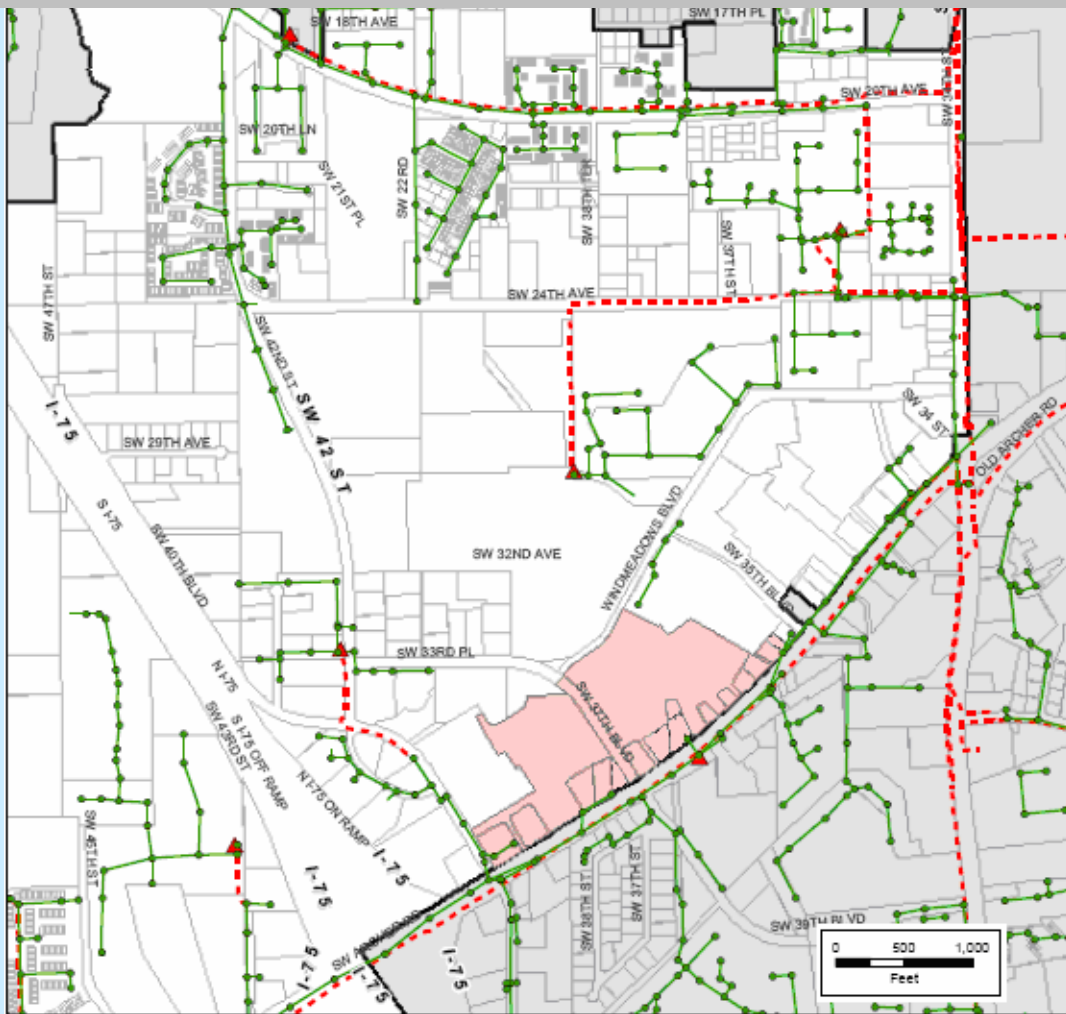


NOTE: LOCATIONS AND DIMENSIONS ARE GIVEN FOR GENERAL REFERENCE ONLY. DIMENSIONS AND LOCATIONS ARE SUBJECT TO FIELD VERIFICATION.



DISCLOSURE REQUIRED BY PROPRIETARY ANNEXATION TOOL - C:\Users\PLA\OneDrive\Documents\PLA\Map\11192007 BYC.A.G.

Butler Plaza Southwest Area



Wastewater Utility Facilities Near Proposed Annexation Area

Butler Plaza, et al

Legend

- Proposed Annexation Area
- Gainesville City Limits
- Gravity Main
- Manhole
- Force Main
- Lift Station

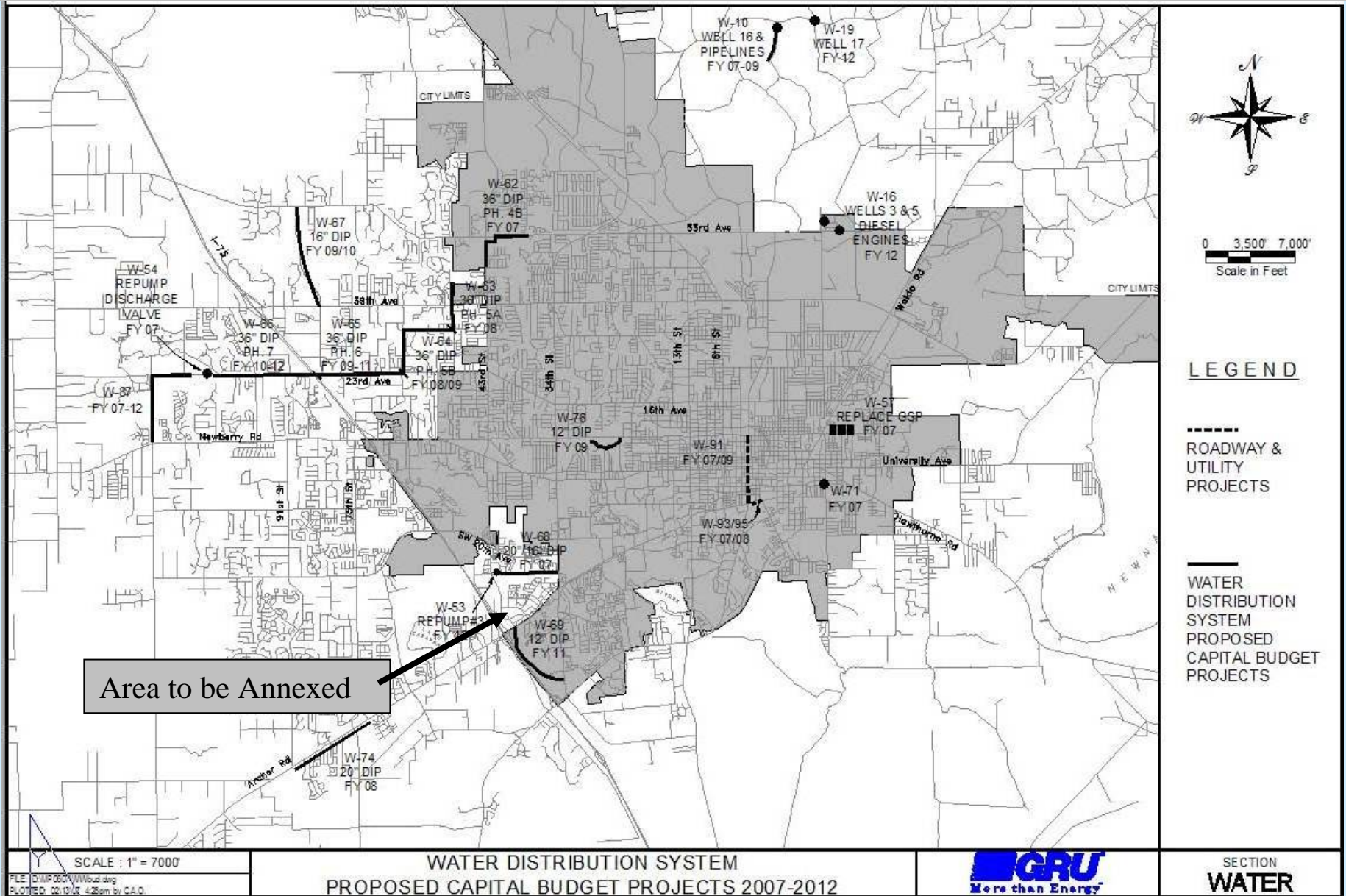


NOTE: LOCATIONS AND DIMENSIONS ARE GIVEN FOR CLARIFICATION ONLY AND ARE NOT TO BE USED FOR CONSTRUCTION OR DESIGN PURPOSES WITHOUT FIELD VERIFICATION.

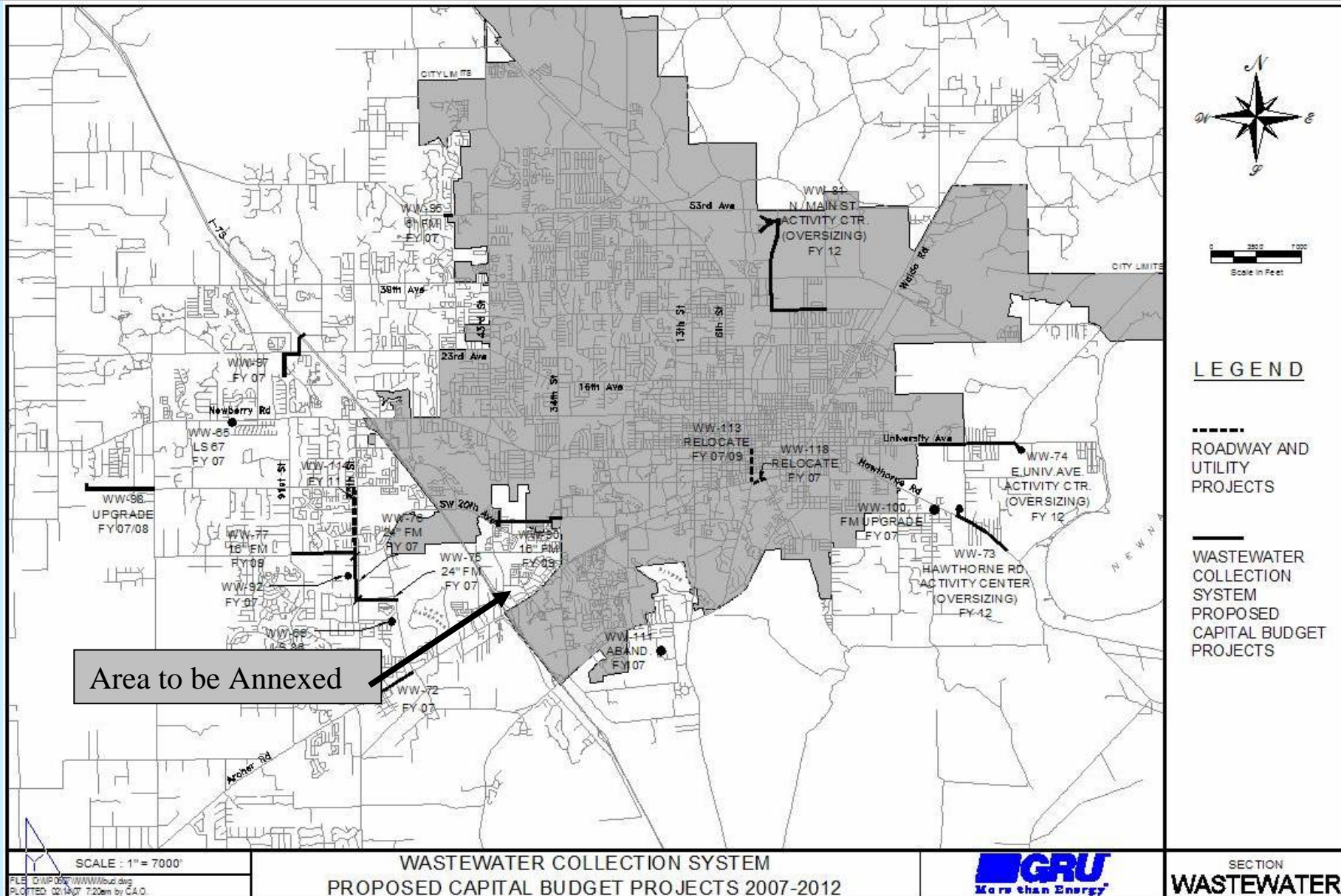


DATE: 08/11/2017 11:32:07 AM PROJECT: BUTLER PLAZA SW ANNEXATION AREA DRAWING: BUTLER PLAZA SW ANNEXATION AREA UTILITY FACILITIES

Butler Plaza Southwest Area



Butler Plaza Southwest Area



Area to be Annexed



LEGEND

- ROADWAY AND UTILITY PROJECTS
- WASTEWATER COLLECTION SYSTEM PROPOSED CAPITAL BUDGET PROJECTS

SCALE : 1" = 7000'

WASTEWATER COLLECTION SYSTEM
PROPOSED CAPITAL BUDGET PROJECTS 2007-2012



SECTION
WASTEWATER

FILE: D:\MP\05\WWW\butz.dwg
PLOTTED: 02/14/07 7:20am by CA.O.

Butler Plaza Southwest Area

<u>Revenue</u>	FY 2008 (4 months)	FY 2009	FY 2010	FY 2011	FY 2012	FY 2013
Ad Valorem	\$ -	\$ 134,386	\$ 142,449	\$ 150,996	\$ 160,056	\$ 169,659
Other Taxes	\$ 23,284	\$ 97,948	\$ 101,327	\$ 105,293	\$ 108,966	\$ 113,262
Fines, Fees, Licenses	\$ 615	\$ 1,939	\$ 1,939	\$ 2,035	\$ 2,035	\$ 2,137
Charges for Services	\$ (26,511)	\$ (81,124)	\$ (82,746)	\$ (84,401)	\$ (86,089)	\$ (87,811)
Intergovernmental Revenue	\$ -	\$ -	\$ -	\$ -	\$ -	\$ -
W/WW/Gas Surcharge	\$ (8,941)	\$ (27,629)	\$ (28,458)	\$ (29,311)	\$ (30,191)	\$ (31,096)
COPS Grant	\$ 25,000	\$ 50,000	\$ 50,000			
Total Rev.	\$ 13,447	\$ 175,520	\$ 184,510	\$ 144,612	\$ 154,777	\$ 166,150
<u>Expense</u>						
Personnel	\$ 31,685	\$ 112,979	\$ 117,499	\$ 122,198	\$ 127,086	\$ 132,170
Operating	\$ 2,866	\$ 17,538	\$ 17,889	\$ 18,246	\$ 18,611	\$ 18,984
Total Exp.	\$ 34,551	\$ 130,517	\$ 135,387	\$ 140,445	\$ 145,698	\$ 151,153
NET	\$ (21,103)	\$ 45,003	\$ 49,123	\$ 4,167	\$ 9,079	\$ 14,997

Butler Plaza - Area A and B

<u>Revenue</u>	FY 2008 (4 months)	FY 2009	FY 2010	FY 2011	FY 2012	FY 2013
Ad Valorem	\$ -	\$ 403,978	\$ 428,217	\$ 453,910	\$ 481,145	\$ 510,013
Other Taxes	\$ 77,409	\$ 318,936	\$ 329,979	\$ 342,673	\$ 354,674	\$ 368,429
Fines, Fees, Licenses	\$ 6,731	\$ 22,791	\$ 23,138	\$ 23,765	\$ 24,125	\$ 24,780
Charges for Services	\$(107,613)	\$(329,297)	\$(335,883)	\$(342,600)	\$(349,452)	\$(356,441)
Intergovernmental Revenue	\$ -	\$ 11,664	\$ 46,656	\$ 48,052	\$ 49,489	\$ 50,970
W/WW/Gas Surcharge	\$ (42,630)	\$(131,728)	\$(135,680)	\$(139,750)	\$(143,942)	\$(148,261)
COPS Grant	\$ 100,000	\$ 125,000	\$ 125,000			
Total Rev.	\$ 33,896	\$ 421,345	\$ 481,428	\$ 386,049	\$ 416,038	\$ 449,490
<u>Expense</u>						
Personnel	\$ 145,597	\$ 259,579	\$ 269,962	\$ 280,760	\$ 291,991	\$ 303,670
Operating	\$ 17,163	\$ 52,520	\$ 53,571	\$ 54,642	\$ 55,735	\$ 56,850
Capital (One time divided by 5 years)	\$ 10,709	\$ 32,126	\$ 32,126	\$ 32,126	\$ 32,126	\$ 32,126
Total Exp.	\$ 173,469	\$ 344,225	\$ 355,659	\$ 367,528	\$ 379,852	\$ 392,646
NET	\$(139,573)	\$ 77,120	\$ 125,769	\$ 18,520	\$ 36,187	\$ 56,844

Butler Plaza - Area A and B

