



Public Works Department

NW 8TH AVENUE CONSTRUCTION MANAGEMENT

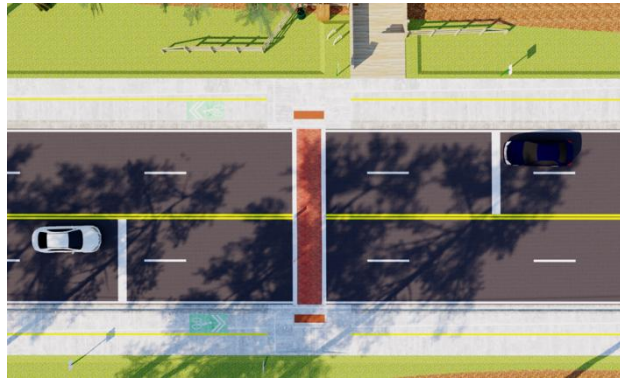
*Stefan Broadus
Public Works
June 4, 2015*

1. 2/19/15 Commission Recap
2. Construction Manager RFQ
3. Creek Crossing Evaluation
4. Potential Construction Phasing Approach

- Option #4B
 - Four travel lanes
 - Shared use paths on north & south side
 - Pedestrian refuge islands



NW 31ST DR.



BOARDWALK



NW 23RD ST.



- On March 25, 2015, the City Purchasing Division solicited written statements of qualifications to provide Construction Management services for the NW 8th Avenue Project (RFQ No. PWDA-150041-DS).
- Two (2) Construction Management firms submitted statements on March 25, 2015. Evaluation of the written submittals resulted in the invitation of two (2) firms to present orally to the evaluators.
- These presentations held on April 13, 2015 further established the qualifications, project approach and methodology for the project.

- The evaluators rank the firms as follows:
 1. Oelrich Construction, Inc.
 2. Charles Perry Partners, Inc.

Issue:

- 3 Box Culverts exist at Hogtown Creek crossing at ~ 2500 NW 8th Ave.
- Culverts have been cleaned out twice since 2001 at \$100,000+ each instance.
- Sediment returns within weeks.
- Additional cleaning recently proposed at ~\$275,000.

CREEK CROSSING EVALUATION



Evaluation:

- Fee: ~\$30,000
- Objective: identify measures that will restore historic characteristics & functionality of the creek floodplain areas north and south of NW 8th Ave while achieving the following objectives:
 - Minimize capital and maintenance costs associated with erosion and sediment accumulation in the Creeks.
 - Minimize flood risk to the roadway and homes in the area.
 - Minimize environmental impacts to the creeks and adjacent floodplain.

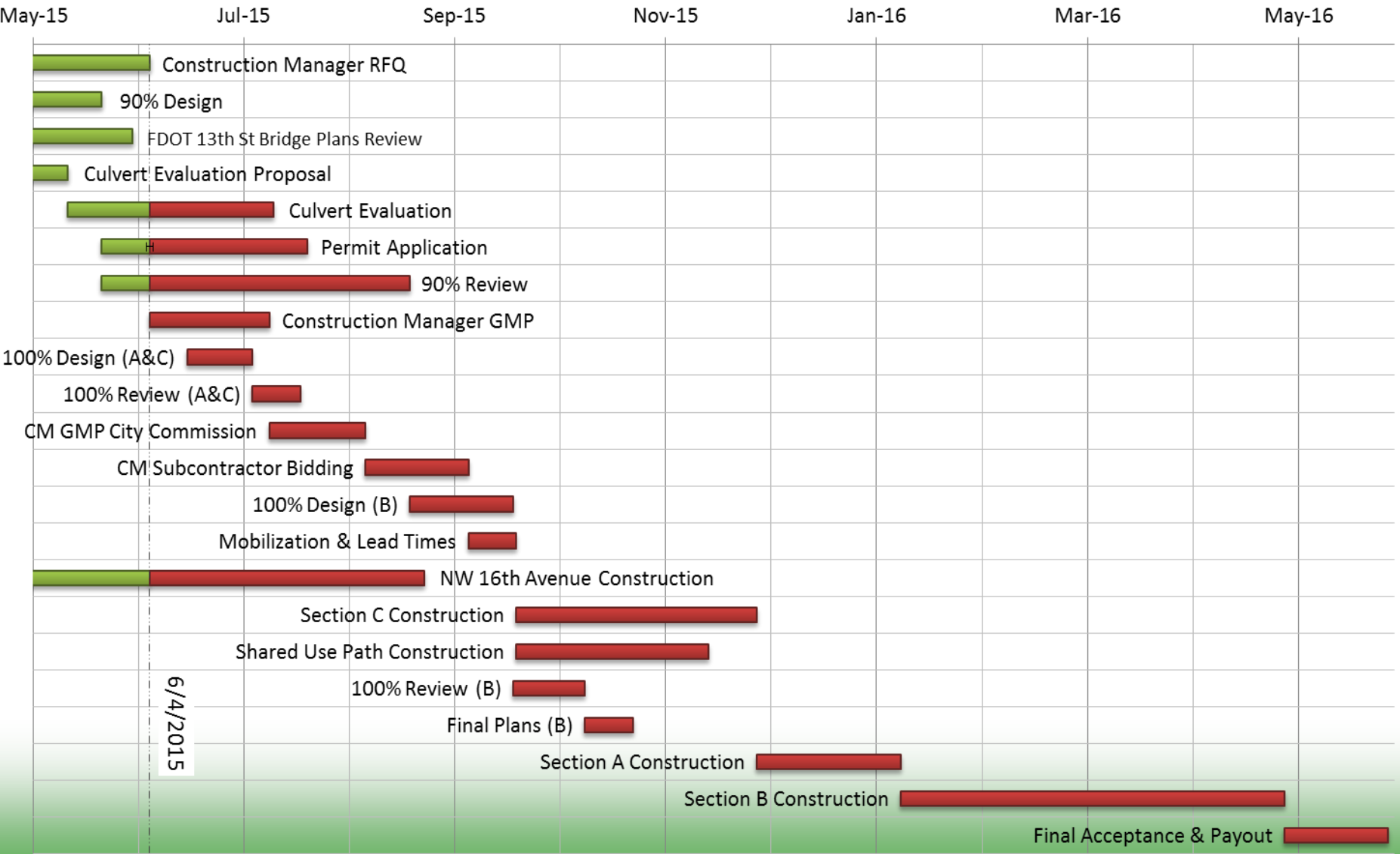
Scenarios to be Evaluated:

- Existing Conditions (No changes)
- Local-scale solution
 - Within vs. outside roadway.
- Watershed-scale solution

1. A&C Design, Permitting, Approvals, Subcontractor Bidding (June-September)
2. A, C, & Shared-Use Path on north side of B Construction. (September – January)
3. Complete creek crossing evaluation and incorporate into plans.* (May – October)
4. Construct Section B.* (January-May)

*Assumes minor or outside roadway culvert solution.

POTENTIAL PHASING APPROACH



Recommendation

1. Commission receive the staff presentation.
2. Approve award of Construction Manager RFQ.
3. Provide guidance on schedule/phasing approach.

Stefan Broadus
Project Engineer III
Public Works - City of Gainesville
(352) 393-8406