

---

# SW 13<sup>th</sup> Street Pedestrian Overpass Design Competition

November 2008



# SW 13<sup>th</sup> Street Pedestrian Overpass

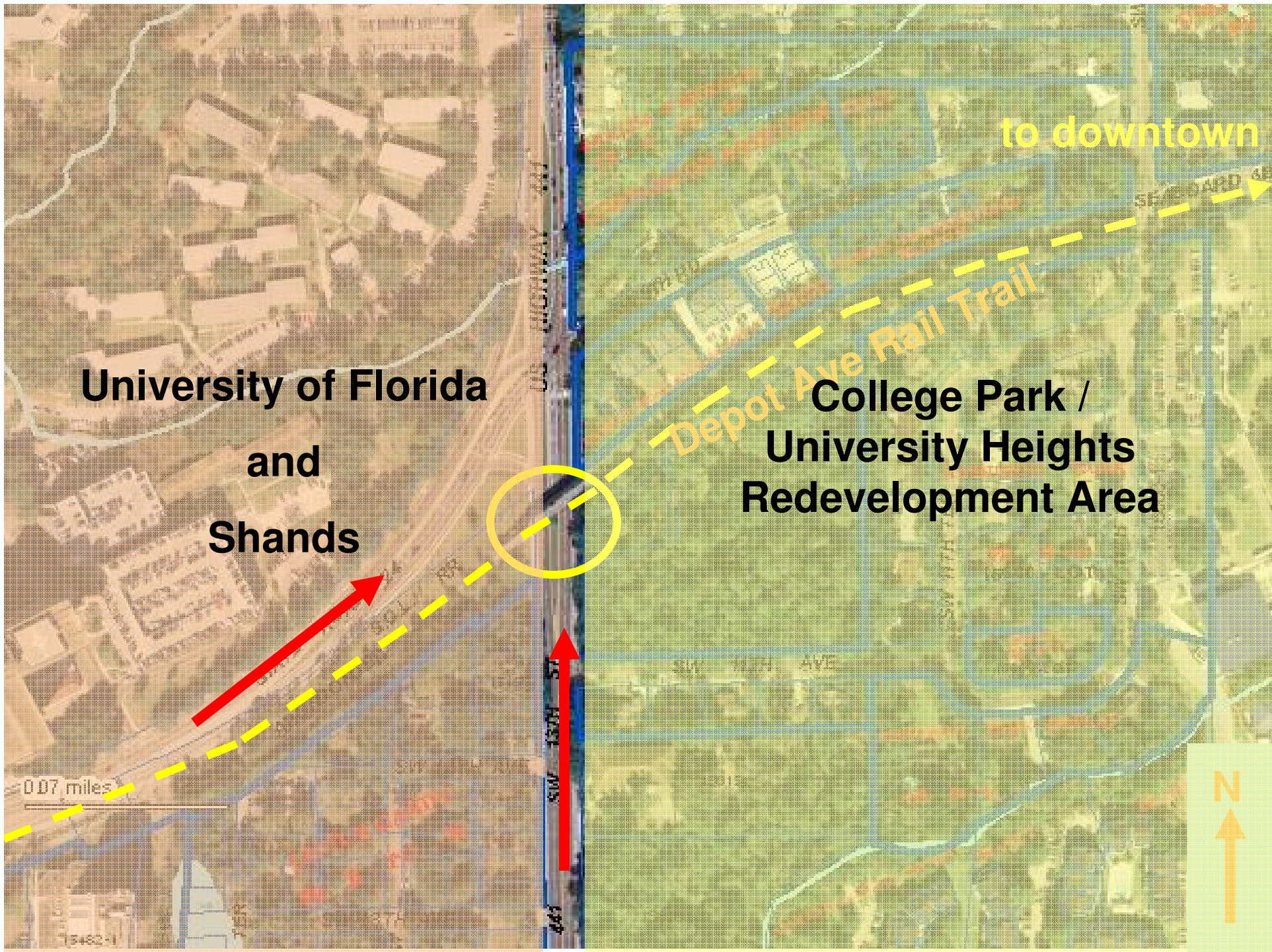
---



*SW 13<sup>th</sup> Street Overpass – Gateway into College Park / University Heights*







**University of Florida  
and  
Shands**

**College Park /  
University Heights  
Redevelopment Area**

**Depot Ave Rail Trail**

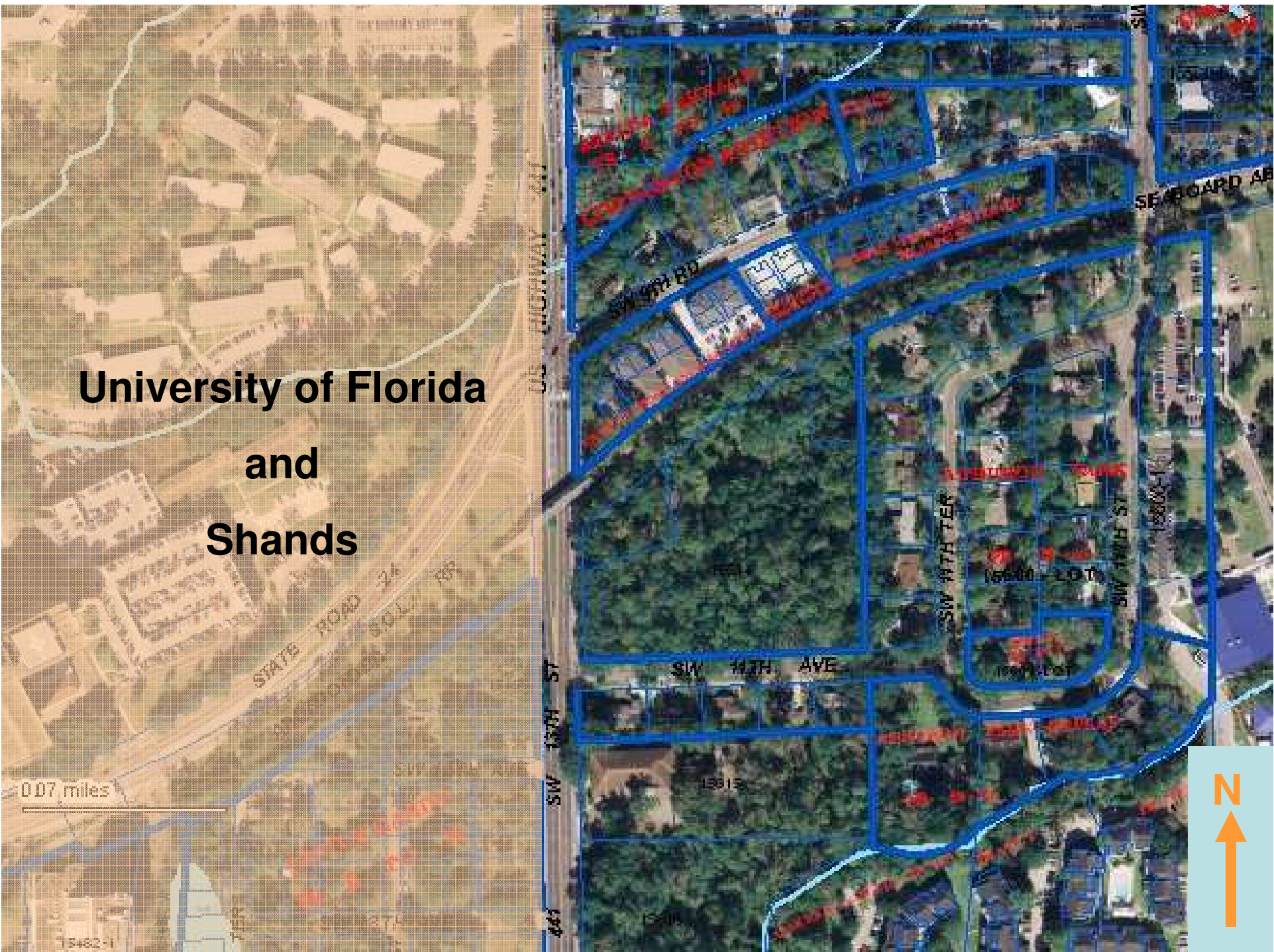
**to downtown**

0.07 miles

**N**



# University of Florida and Shands





# Project Context Area

---



# Project Context Area





# Project Context Area

---



# Project Context Area

---



<http://shands.org/public/growth/sufcancerhosp.asp>





# Archer Rd/SW 16<sup>th</sup> Ave

Archer Road / SW 16th Avenue Project Development and Environment (PD&E) Study



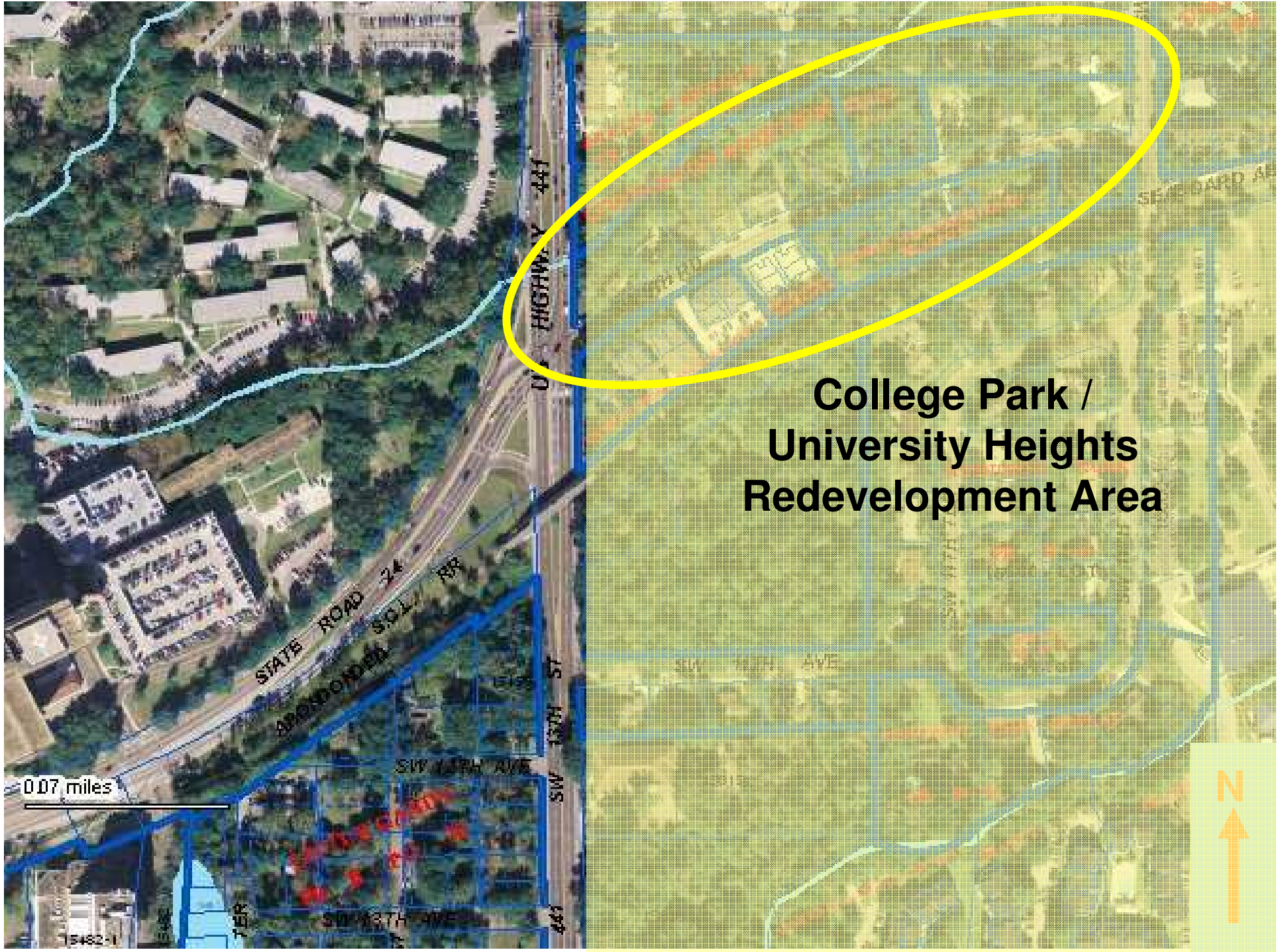
## Project Location Map



# Archer Rd/SW 16th Ave PD&E Study







**College Park /  
University Heights  
Redevelopment Area**



# CPUH- Project Context





# CPUH- Project Context

---



# CPUH – Project Context

---





# CPUH – Project Context

---





# CPUH – Project Context

---





# CPUH – Project Context

---



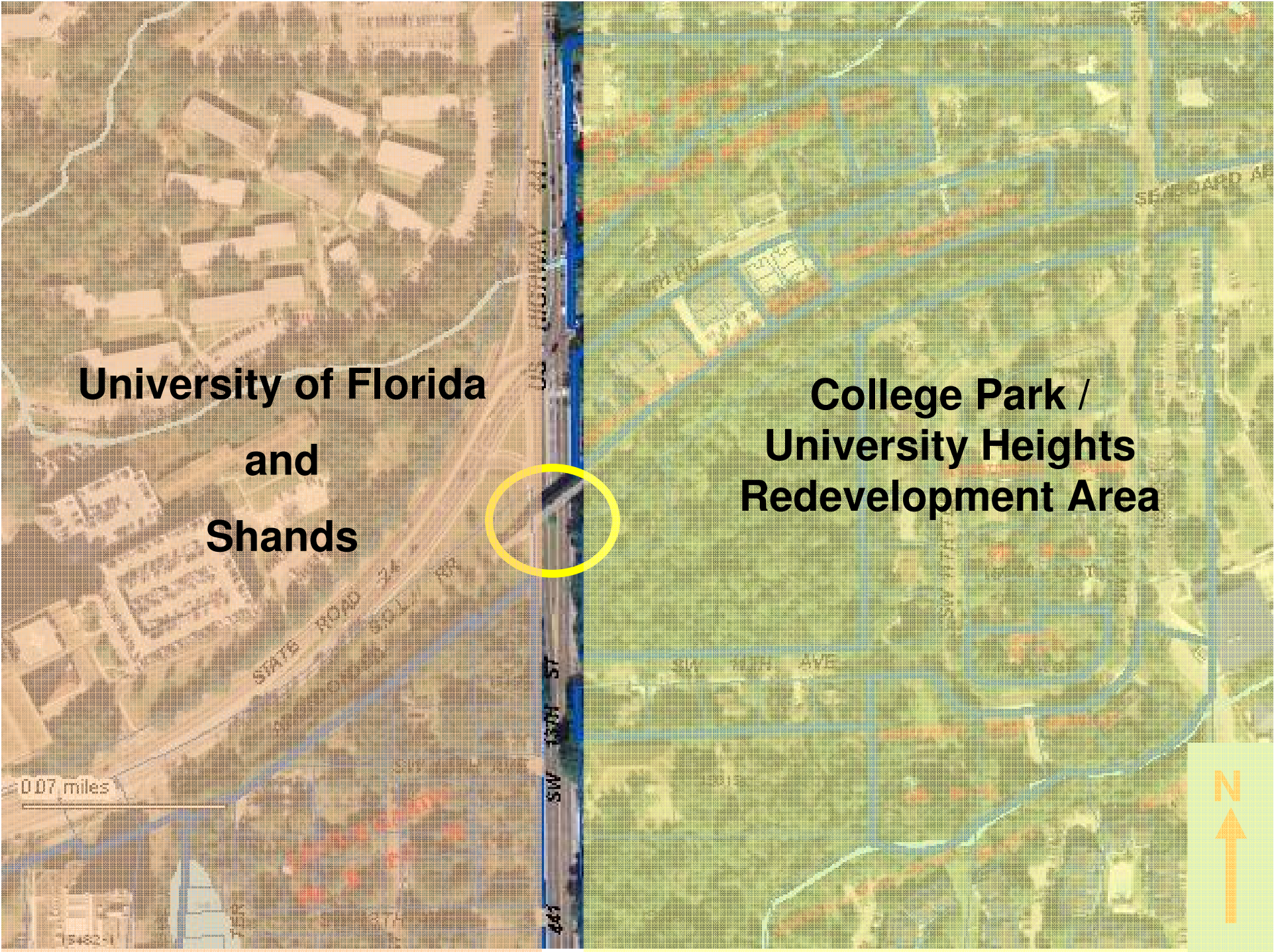


# CPUH – Project Context

---







**University of Florida  
and  
Shands**

**College Park /  
University Heights  
Redevelopment Area**

0.07 miles

N  
↑



# SW 13<sup>th</sup> Street Pedestrian Overpass

---



*SW 13<sup>th</sup> Street Overpass – Gateway into College Park / University Heights*





# SW 13<sup>th</sup> Street Pedestrian Overpass... user experience

---



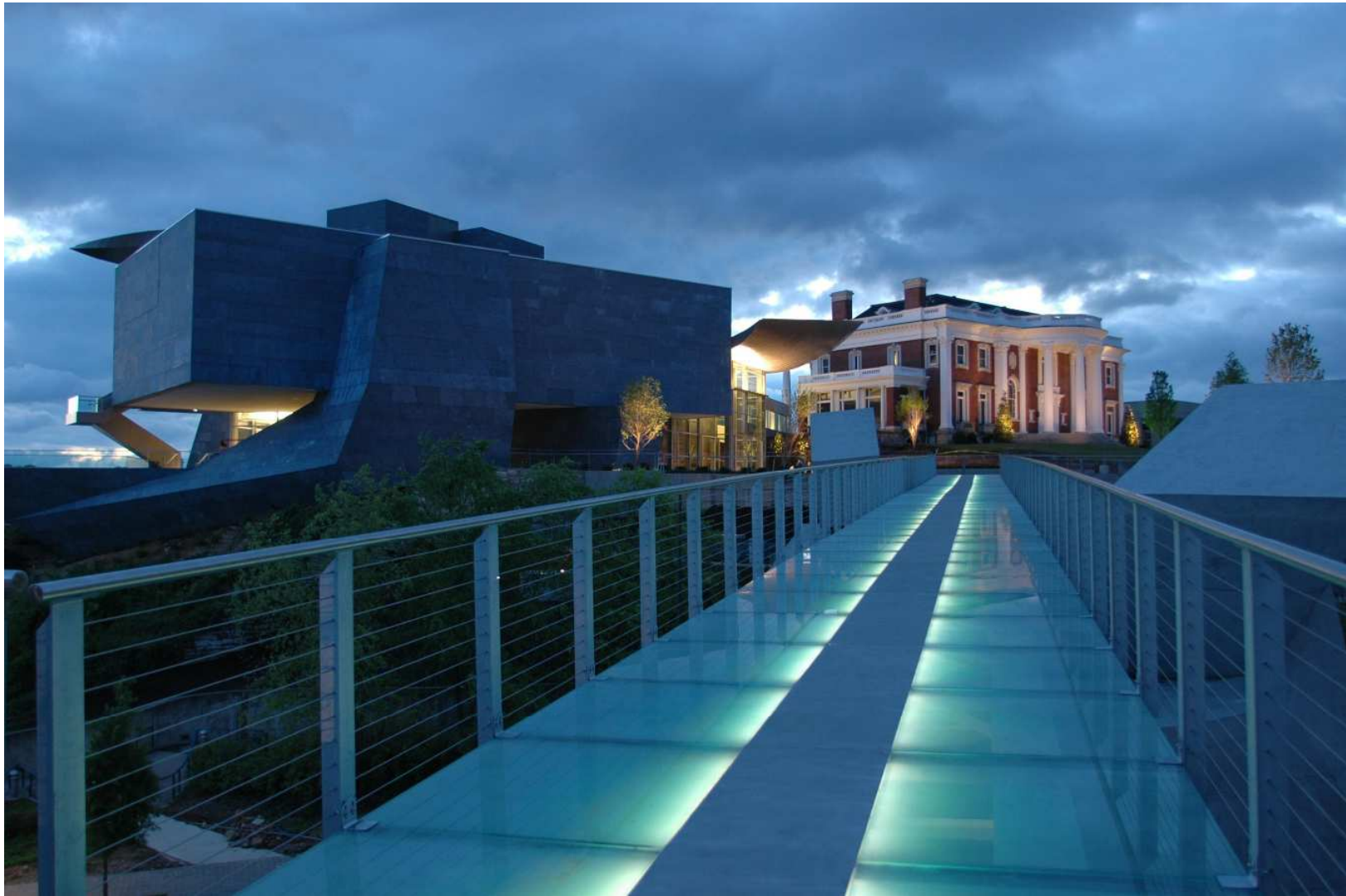
*SW 13<sup>th</sup> Street Overpass - User experience*





## The possibilities... user experience

---



*Holberg Pedestrian Bridge, Chattanooga, TN*





# The possibilities... typical overpass enhancement project

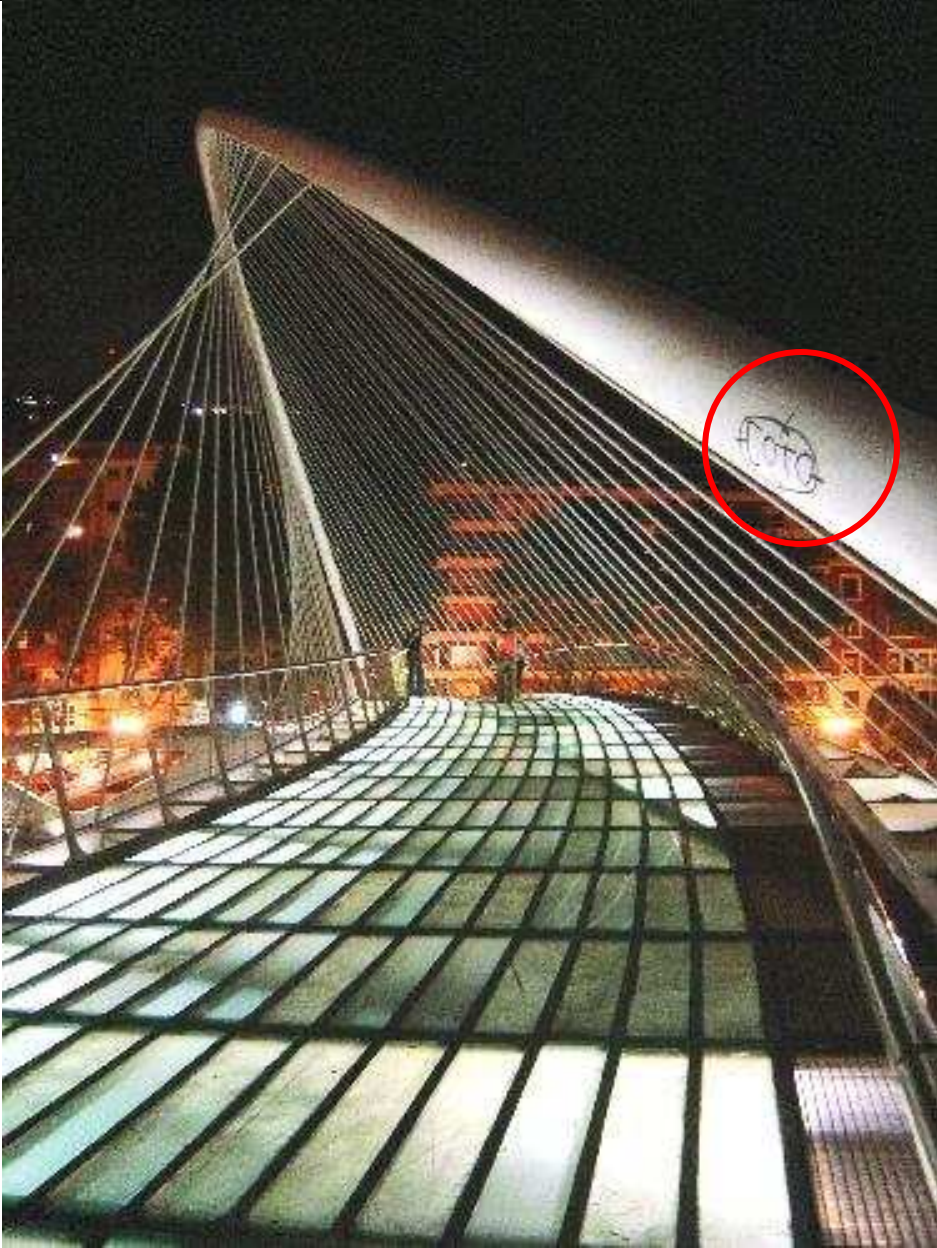


*Gulf Shores, Alabama*





# The possibilities... elegant design



*Bilbao, Spain*





## The possibilities ... sensitive to context

---



*Helix Pedestrian Bridge, Seattle, WA*





# The possibilities... inspiring perspectives

---



## The possibilities ... interesting materials

---



*Henderson Waves Pedestrian Bridge, Southern Ridges, Singapore*





## The possibilities ... day or night

---



*Henderson Waves Pedestrian Bridge, Southern Ridges, Singapore*



# Redevelopment Goals for College Park / University Heights



Gainesville Community Redevelopment Agency  
COMMUNITY REDEVELOPMENT PLAN

College Park/University Heights Community Redevelopment Area

College Park/University Heights  
Redevelopment Plan

- **Coordination** – Historic preservation and redevelopment efforts are not mutually exclusive. It is important that the objectives of the Redevelopment Plan and the University Heights Historic District are consistent with each other and that the two advisory boards work together. The CRA should help facilitate dialog between the two groups so the intentions of both groups are met and that there is buy-in by each advisory board. This is especially important so that property owners within designated historic districts see historic preservation and adaptive reuse in a positive light, as well as historic preservationists viewing economic redevelopment as a positive goal within each historic district.

### 3.1.9 Objective 9 – Public Spaces

While recreation opportunities are not a significant blighting factor within the Community Redevelopment Area, public spaces have a great impact on the quality of life within the community. Active recreation facilities appear to be sufficiently available to residents in most areas; however, some public facilities such as the Depot Avenue Rail Trail bridge over SW 13<sup>th</sup> Street are in need of aesthetic improvements and general maintenance. Improvements to existing park areas and the creation of new parks and public green spaces can be used to further remove blight and improve the aesthetics and amenities of the area. Acquiring land for parks and green space can create new neighborhood parks, which are lacking in the CPIUH Community Redevelopment Area. Highly visible public plazas, gathering places and alternative transportation corridors should be well maintained, aesthetically pleasing and designed in such a way as to protect public safety and foster a more cohesive urban form. Public gathering places can also serve as a place for signature events, as currently there is not an appropriate location to hold events in the Community Redevelopment Area. Where appropriate, some public spaces can provide dual uses as wet or dry stormwater retention areas.

#### Public Space Initiatives

Public spaces are an integral part of the fabric of any community. They provide connectivity and a sense of place. The following initiatives address public space within the Community Redevelopment Area.

- **Pedestrian and Bicycle Trails** – Such corridors can not only provide recreational opportunities within the CPIUH Community Redevelopment Area, they can provide much needed transportation alternatives through and within the Community Redevelopment Area. The CRA should work with the appropriate government agencies and non-profit groups to continue its plan and develop an interconnected system of trails, corridors, and other linkages within the CPIUH Community Redevelopment Area.
- **Open Spaces, Active Recreational Areas and Public Plazas** – Open space can be provided and enhanced through the establishment of landscaped promenades, planted landscape islands, mini-parks or plazas, active recreational areas and neighborhood gathering places. A system of public spaces, linked to the extent possible, will help promote alternative forms of transportation and provide a pleasant experience for pedestrians.
- **Depot Rail Trail Improvements** – This trail has the potential to provide a key linkage between the Community Redevelopment Area, the University and downtown. Over the years it has not been utilized to its fullest potential. New developments along the trail should address connectivity and access to the trail using accepted CPTED (Crime Prevention Through Environmental Design) design principles that enhance the trail user's comfort and safety. Fencing off



Depot Avenue Rail Trail crossing  
over 13<sup>th</sup> Street

November 30, 2004

21

Adopted November 28, 2005





## Redevelopment Goals for College Park / University Heights

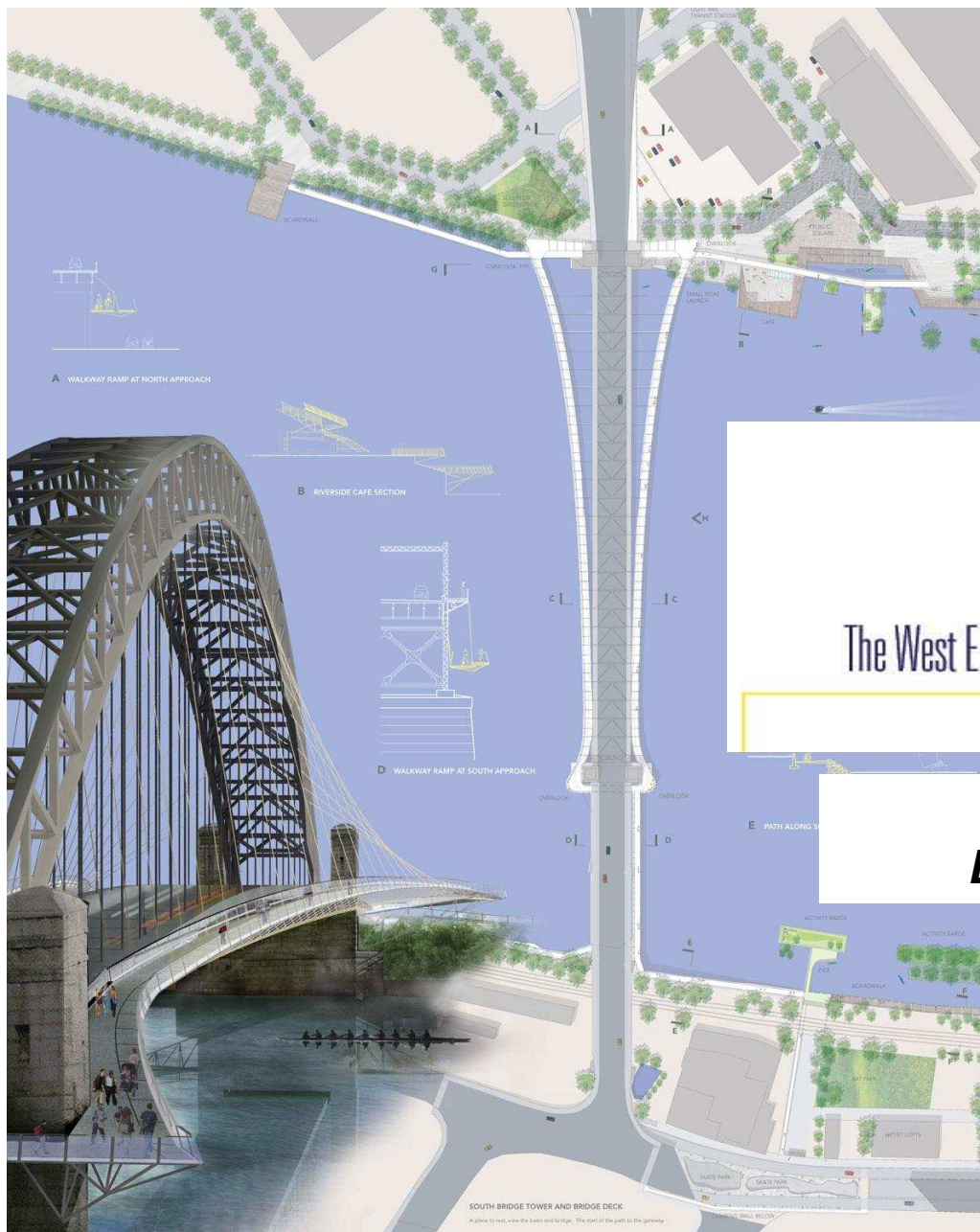
---

• **Depot Rail Trail Improvements** – The trail has the potential to provide a **key linkage** between the Community Redevelopment Area, the University, and downtown. Over the years it has not been utilized to its fullest potential. New developments along the trail should **address connectivity** and access to the trail using accepted CPTED design principles that enhance the trail user's comfort and safety. Fencing off the trail and preventing access to the trail via new developments should be avoided. Proper lighting and other elements should be provided by development adjacent to the trail. Additionally, the CRA should work with the appropriate agency to **develop a beautification plan** for the trail crossing over SW 13<sup>th</sup> St. This crossing provides an **important gateway** into the Community Redevelopment Area and provides visitors a first impression of the area that may not reflect the desired positive impression of the Community Redevelopment Area.

Adopted November 28, 2005



# CRA Presentation – August 2007



## PEDESTRIAN **BRIDGE** COMPETITION

Pittsburgh, PA

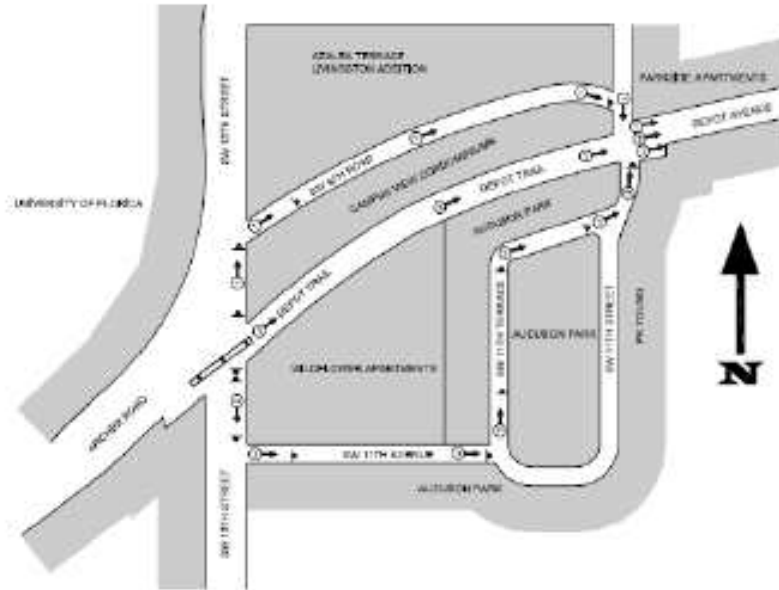
**Competition Winner:**  
**Endres Ware, Berkeley CA**





# Alternative Connection Study – July 2008

## SW 13<sup>TH</sup> STREET/DEPOT AVENUE SHARED USE PATH ALTERNATIVE ACCESS STUDY



July 2008

Prepared by:

**Joe Montalto, Jr., P.E.**

Project Engineer

P.E. Number: **34315**

**JMJ Consulting Engineering, LLC**

Certificate of Authorization Number: **00009907**

For:

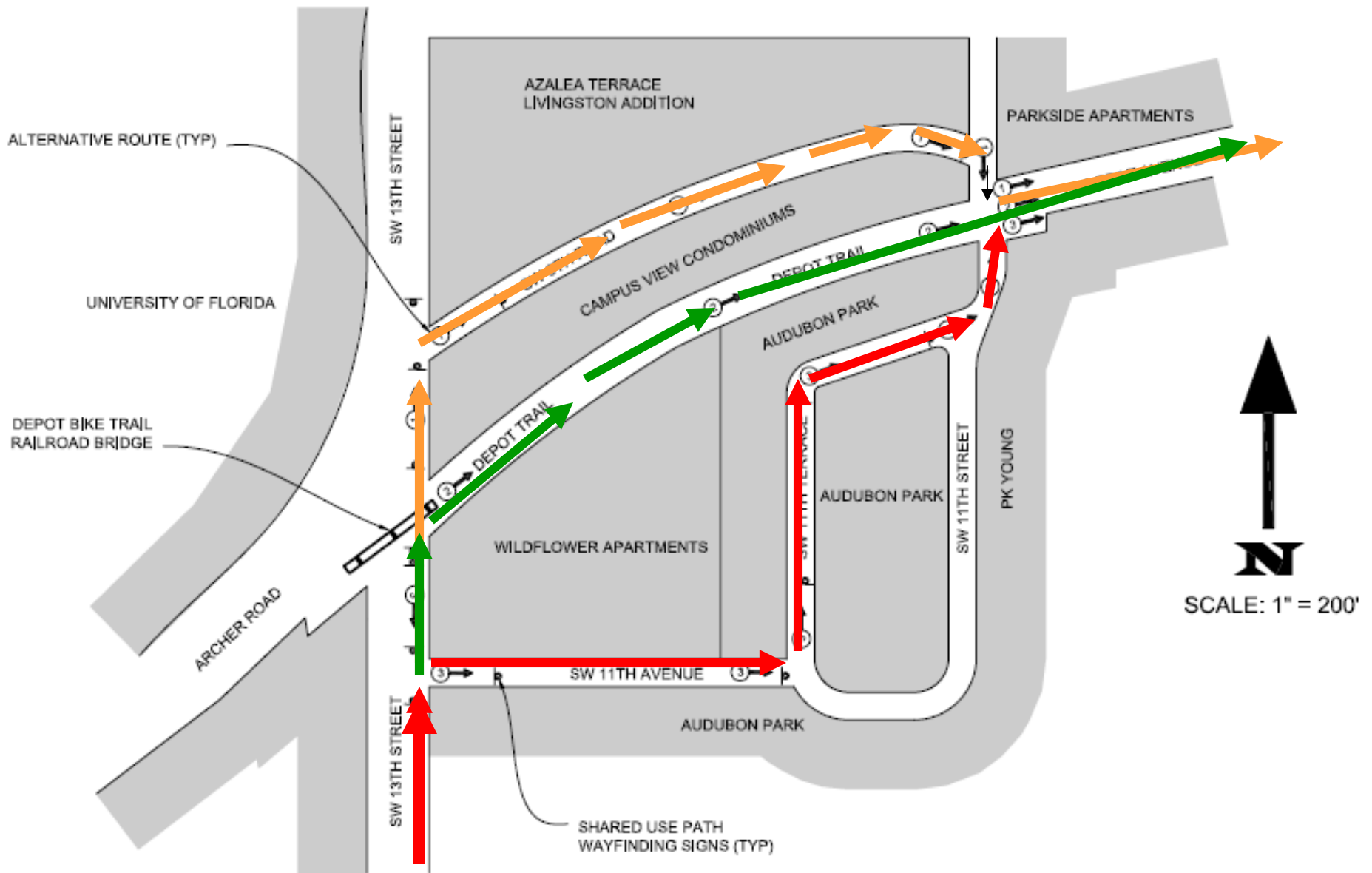
**Diane Bennett, E.I.T.**

Engineer

Gainesville Community Redevelopment Agency



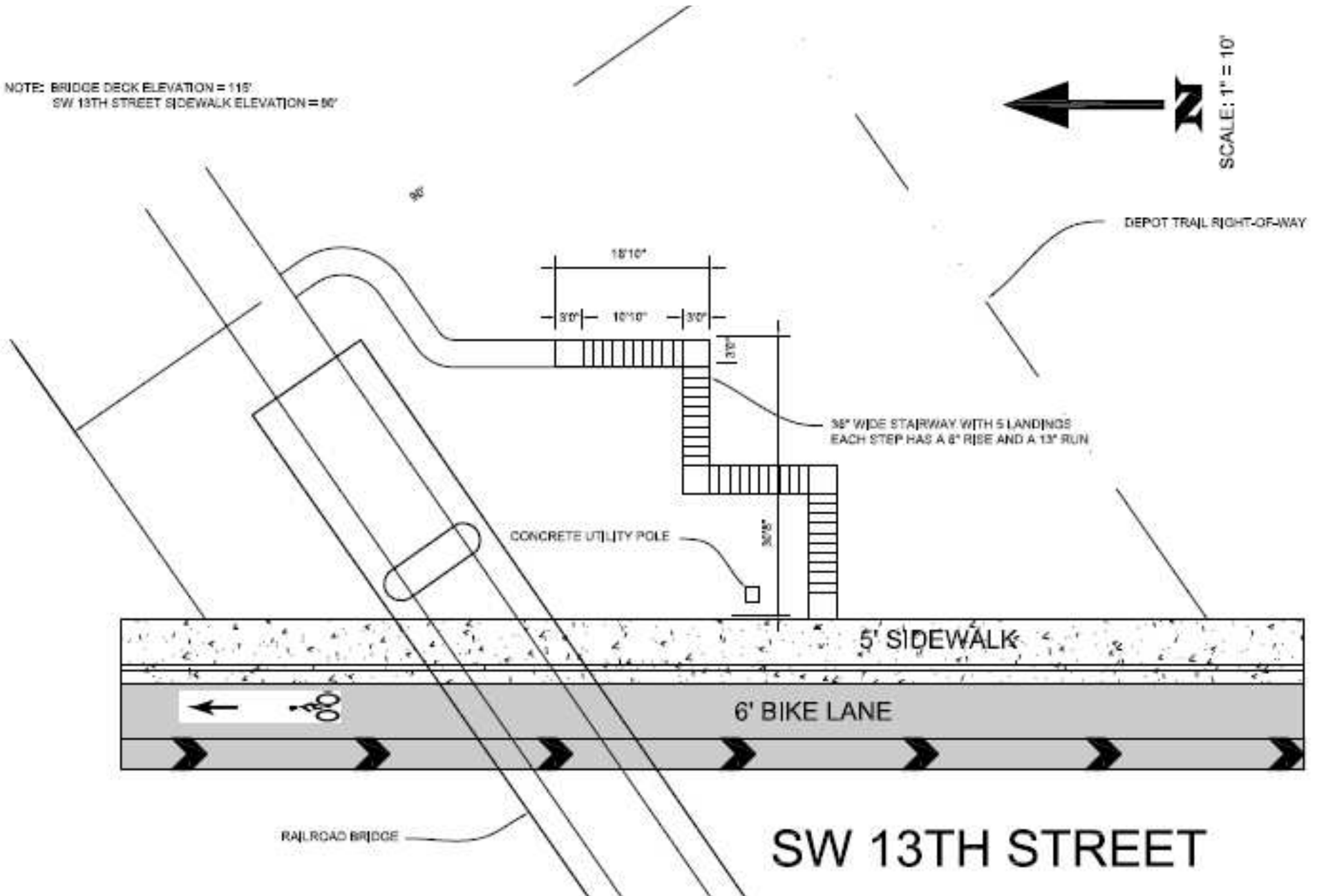
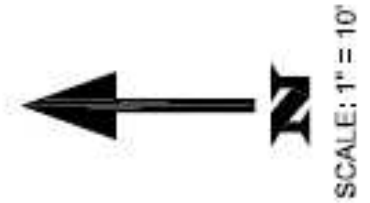
# Alternative Connection Study – July 2008





# Alternative Connection Study – July 2008

NOTE: BRIDGE DECK ELEVATION = 115'  
SW 13TH STREET SIDEWALK ELEVATION = 50'



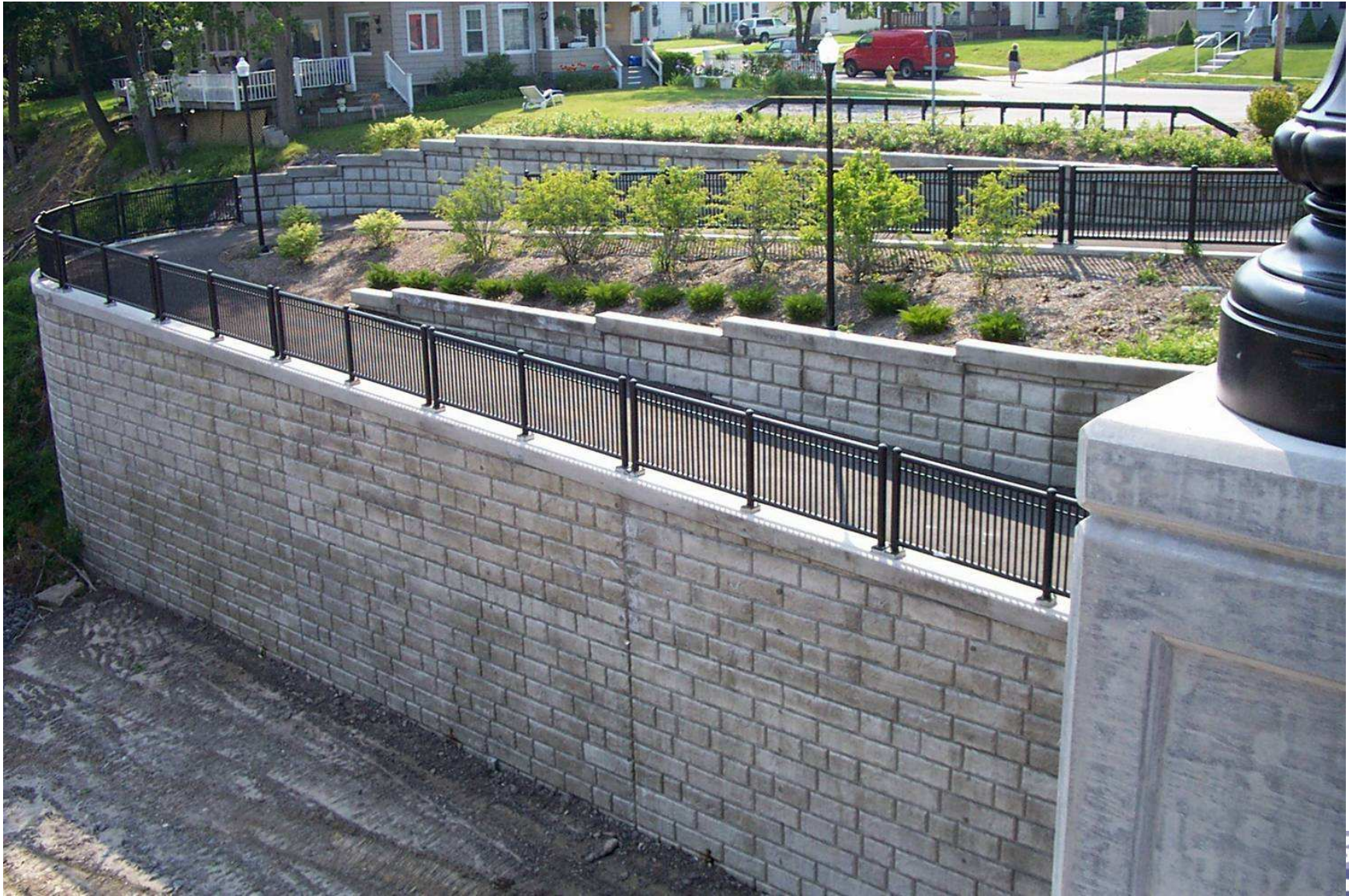
# Alternative Connection... the possibilities

---





# Alternative Connection... the possibilities



Colonel Patrick O'Rorke Bridge, Rochester, NY





# Alternative Connection... the possibilities

---



Bicycle lift, Trondheim, Norway





# Research Design Competitions

The West End

PEDESTRIAN  
**BRIDGE**  
COMPETITION

Pittsburgh, PA

]present[  
ARCHITECTURE'S CHALLENGE

THU THIEM NEW URBAN AREA Ho Chi Minh City, Vietnam  
International Design Competition  
Central Plaza, Crescent Park, and Saigon River Pedestrian Bridge



INTERNATIONAL URBAN DESIGN COMPETITION FOR KINGS CROSS, LONDON  
UPDATE – 15 OCTOBER 2008

*flip a Strip*

NEW IDEAS  
FOR OLD STRIP  
MALLS



# Develop SW 13<sup>th</sup> St Pedestrian Overpass Design Competition

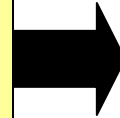
---

## Competition Goals

Realign **FORM** and **FUNCTION** of overpass with redevelopment goals

### 2005 CPUH Redevelopment Goals

- Address Connectivity
- Develop a beautification plan
- Important Gateway



### Design Competition Goals

- Re-design access to overpass so direct connection is possible
- Enhance aesthetics of overpass by re-designing pedestrian enclosure
- Create Gateway feature into CPUH/UF/Shands





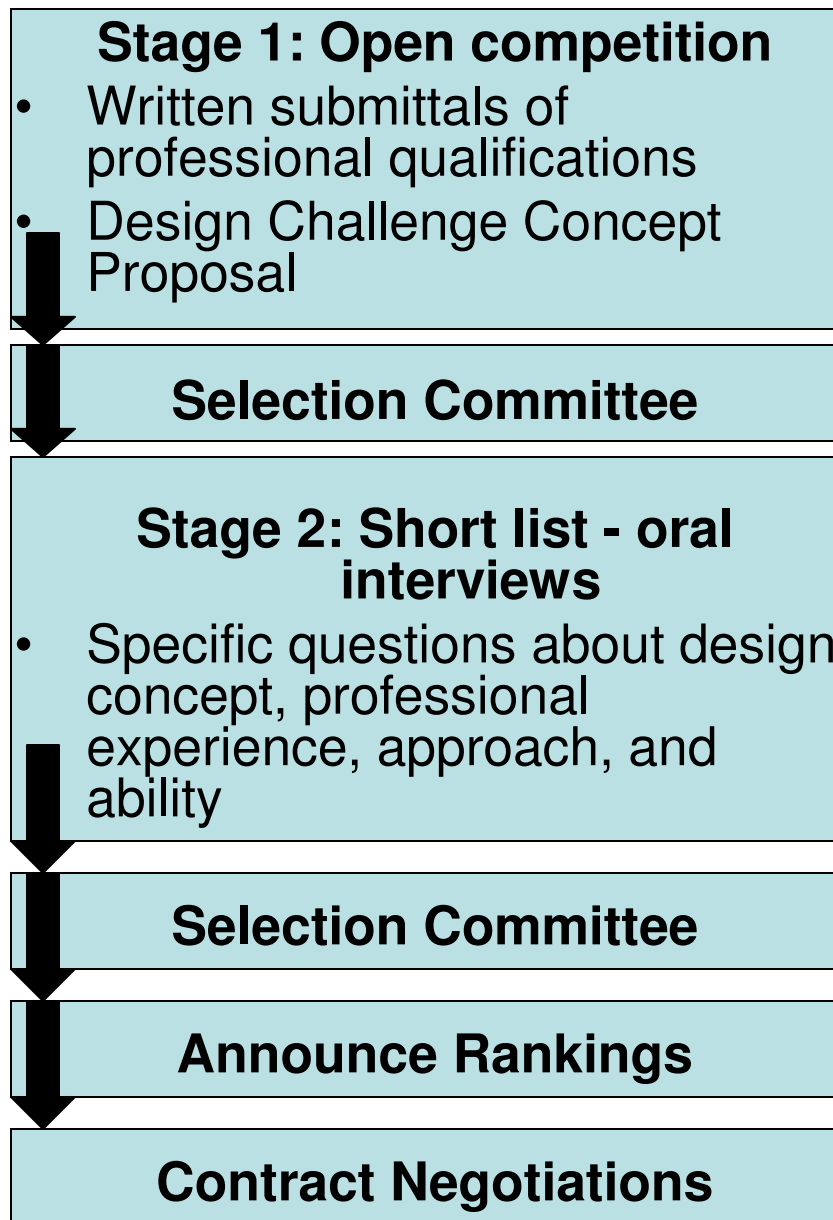
# SW 13<sup>th</sup> St Pedestrian Overpass Design Competition

## Competition Objectives

- Solicit a high number of *visionary* and *feasible* proposals from qualified design firms
- Total Budget = \$1.5 M
- Construction goal summer 2010



# SW 13<sup>th</sup> St Pedestrian Overpass Design Competition...Process



- ### Qualifications Selection Criteria
- Work Understanding and Experience
  - Ability
  - Work Approach
  - Project Manager
  - Work Team
  - Scheduling

- ### Design Selection Criteria
- Aesthetics and Originality
  - Context
  - Functionality
  - Feasibility
  - Sustainability





## Linking with other Redevelopment Projects in Area

---

- **Depot Ave Rail-Trail Improvements**
  - Underground utilities
  - Stabilize banks along trail
  - Add Rail-Trail lighting
  - Widen portion of trail connecting to overpass
  - Rail-Trail Wayfinding and Signage
  - Design universal Rail-Trail sign
- **SW 13<sup>th</sup> Street Improvements**
  - FDOT Milling and Resurfacing
  - Medians
  - Streetscaping
  - Lighting
- **SW 16<sup>th</sup> Ave/Archer Rd Project**
  - Re-direct traffic, more pedestrian friendly

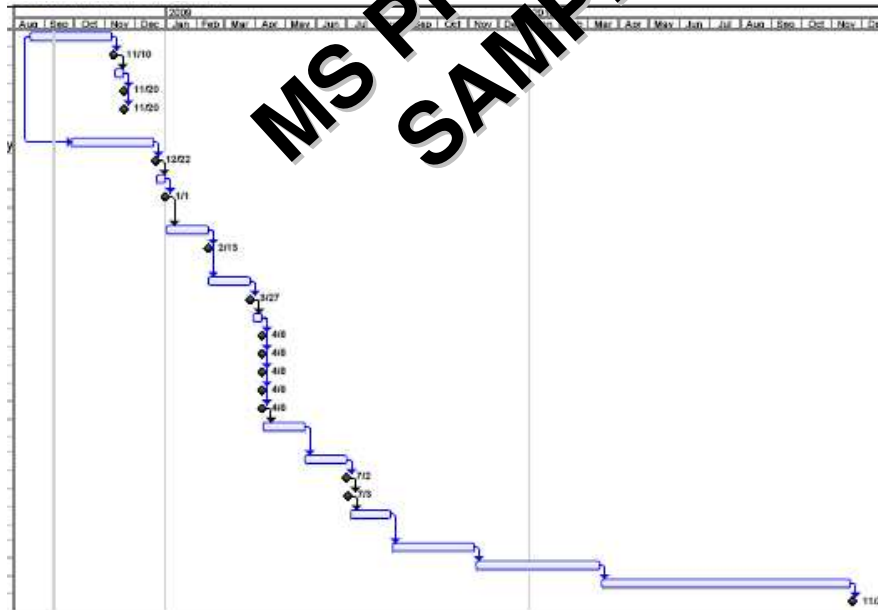


*Eye4 Design – Depot Ave Rail-Trail*



# Project Schedule – High Level

ID	Task Name	Duration	Start	Finish	Predecessors
1	Competition Stage I - Concept Generation	80 days?	Mon 8/18/08	Fri 11/7/08	
2	Design Concepts	1 day?	Mon 11/10/08	Mon 11/10/08	1
3	Selection Committee 1	7 days?	Tue 11/11/08	Wed 11/19/08	2
4	3 Maximum \$1,000 awards	1 day?	Thu 11/20/08	Thu 11/20/08	3
5	3 Maximum Design Schemes	1 day?	Thu 11/20/08	Thu 11/20/08	3
7	RFQ - Design Professionals	80 days?	Mon 9/29/08	Fri 12/19/08	1SS+30 day
8	Design Teams	1 day?	Mon 12/22/08	Mon 12/22/08	7
9	Selection Committee 2 - written qualifications based selection	7 days?	Tue 12/23/08	Wed 12/31/08	8
10	3 Maximum Design Teams	1 day?	Thu 1/1/09	Thu 1/1/09	9
12	Execute Professional Services Contract	30 days?	Fri 1/2/09	Thu 2/12/09	10
13	3 Maximum \$4,000 Stipend	1 day?	Fri 2/13/09	Fri 2/13/09	12
15	Competition Stage II - Concept Proposal	30 days?	Fri 2/13/09	Thu 3/26/09	12
16	3 Maximum Design Schemes	1 day?	Fri 3/27/09	Fri 3/27/09	15
17	Selection Committee 2- Proposal Based Selection	7 days?	Mon 3/30/09	Tue 4/7/09	16
18	1 \$4,000 Award	1 day?	Wed 4/8/09	Wed 4/8/09	17
19	1 \$3,000 Award	1 day?	Wed 4/8/09	Wed 4/8/09	17
20	1 \$2,500 Award	1 day?	Wed 4/8/09	Wed 4/8/09	17
21	3 Design Proposals	1 day?	Wed 4/8/09	Wed 4/8/09	17
22	1 Qualified Design Team	1 day?	Wed 4/8/09	Wed 4/8/09	17
23	Contract Execution	30 days?	Thu 4/9/09	Wed 5/20/09	22
25	RFP Construction Management At-Risk	30 days?	Thu 7/1/09	Wed 7/1/09	23
26	Selection Committee - Design Team members	1 day?	Thu 7/2/09	Thu 7/2/09	25
27	Construction Team	1 day?	Fri 7/3/09	Fri 7/3/09	26
28	Contract Execution	30 days?	Mon 7/6/09	Fri 8/14/09	27
29	Develop 100% Plans	30 days?	Mon 8/3/09	Fri 11/6/09	28
30	Permitting	30 days?	Mon 8/3/09	Fri 11/6/09	28
31	Construction	30 days?	Mon 8/3/09	Fri 11/6/09	28
32	Construction	30 days?	Mon 3/1/10	Fri 11/19/10	31
33	Project Complete	1 day?	Mon 11/22/10	Mon 11/22/10	32



## Winter 2008/09

- Competition/RFQ draft review
- Prepare marketing materials
- Launch competition
- Manage competition

## Spring 2009

- Receive design proposals and consultant qualifications
- Select winner
- Contract negotiations for 100% construction bid documents

## Winter 2009

- Final construction document design review
- Begin FDOT permitting process
- RFQ for Construction Management

## Winter/Spring 2010

- Select Contractor
- Apply for permitting

## Spring/Summer 2010

- Begin Construction





# Recommendations

---

- Questions?
- Input?

