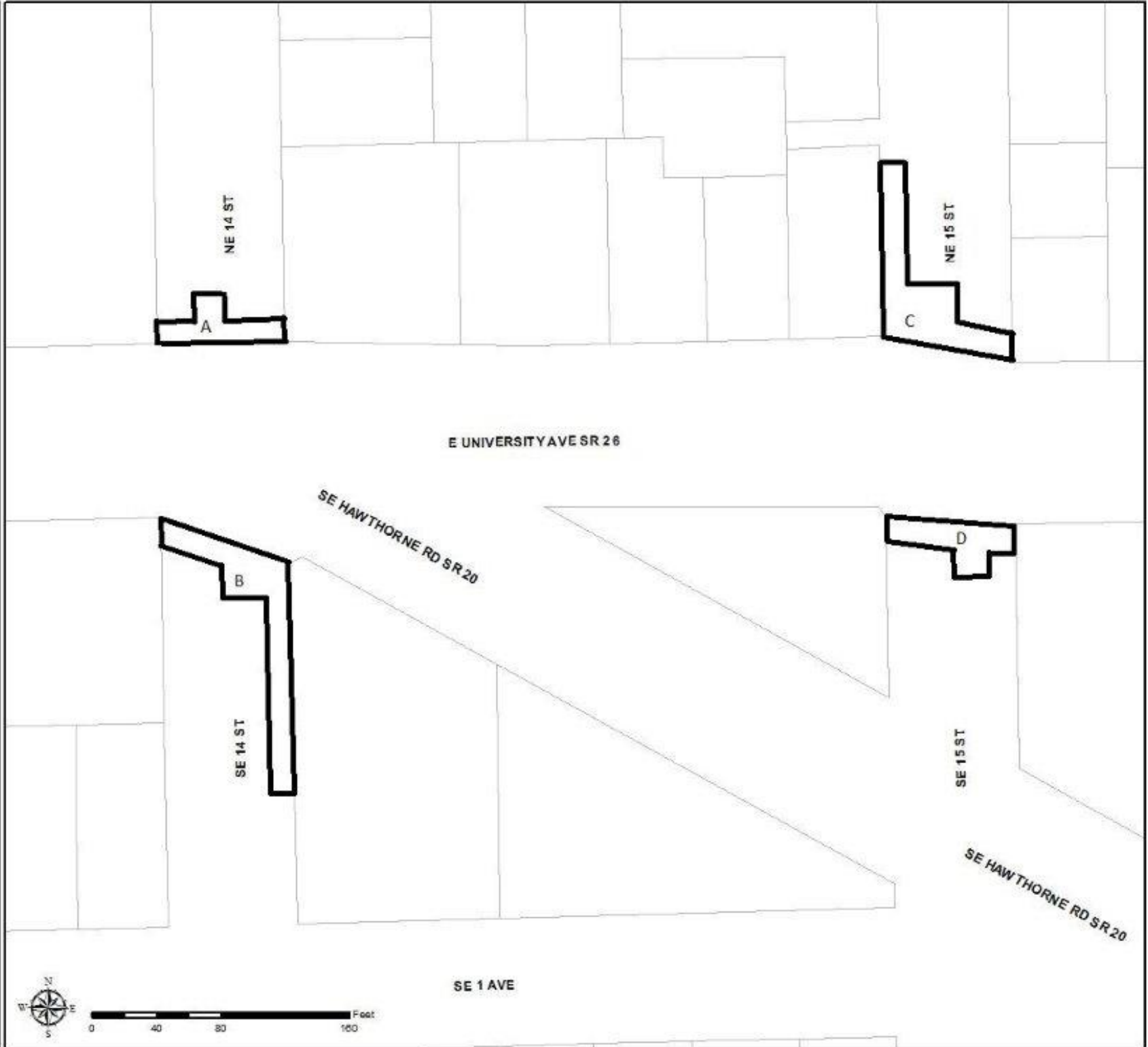


City of Gainesville

Public Works

Perpetual Easements  
contained in areas A, B, C,  
and D.

Legislative ID#  
140684C



This map is for informational purposes only and does not constitute a guarantee of accuracy or a warranty of any kind. The City of Gainesville does not assume any liability for errors or omissions on this map, and is not responsible for any damages or losses resulting from its use.



City of Gainesville

Date: 9/24/2014

