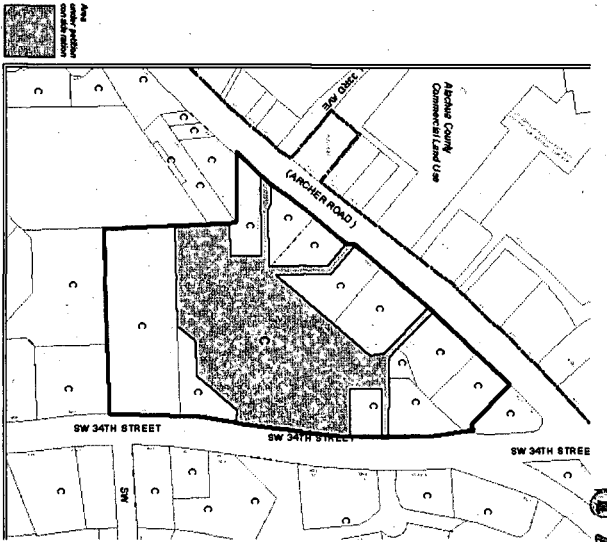


Land Use Designations

- SR Single Family (up to 8 duwacs) (12 duwacs)
- RM Residential Low Density (up to 12 duwacs)
- RH Residential Medium Density (100 duwacs)
- MUR Mixed Use Residential (up to 75 duwacs)
- MUL Mixed Use Low Intensity (8-30 duwacs)
- MUM Mixed Use Medium Intensity (12-30 duwacs)
- MUH Mixed Use High Intensity (up to 150 duwacs)
- UMU1 Urban Mixed Use 1 (up to 75 duwacs)
- UMU2 Urban Mixed Use 2 (up to 100 duwacs)
- O Office
- C Commercial
- IND Industrial
- E Education
- REC Recreation
- CON Concession
- AGR Agriculture
- PF Public Facilities
- PUD Planned Use District

City Limits

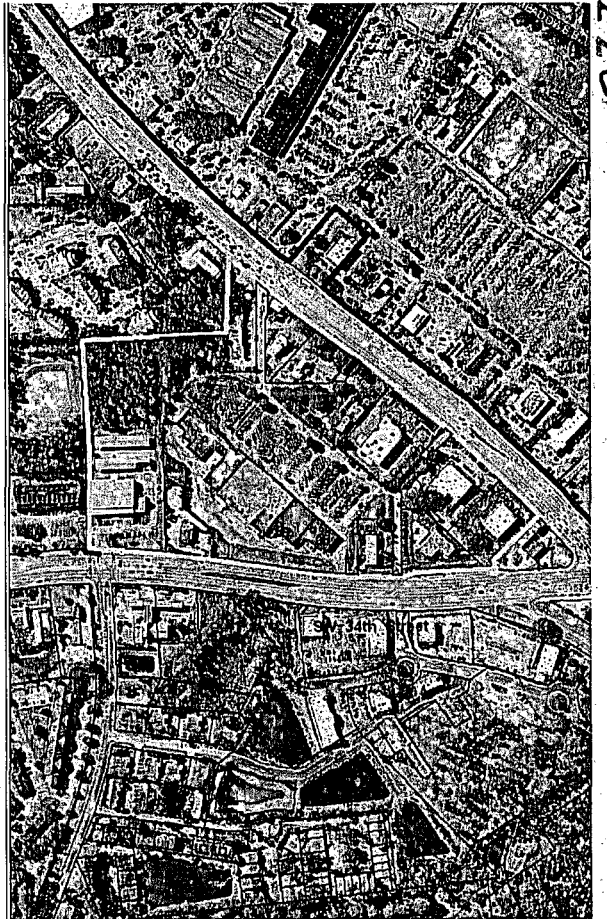


EXISTING LAND USE

| Name | Petition Request | Map(s) | Petition Number |
|--|---|--------|-----------------|
| Erg, Derman & Associates, Inc agents for M & P Shopping Centers, LLC | Amend Existing Planned Development (Anchor Square) to Build Kohl's Retail Store | 4345 | 97POA-07PB |

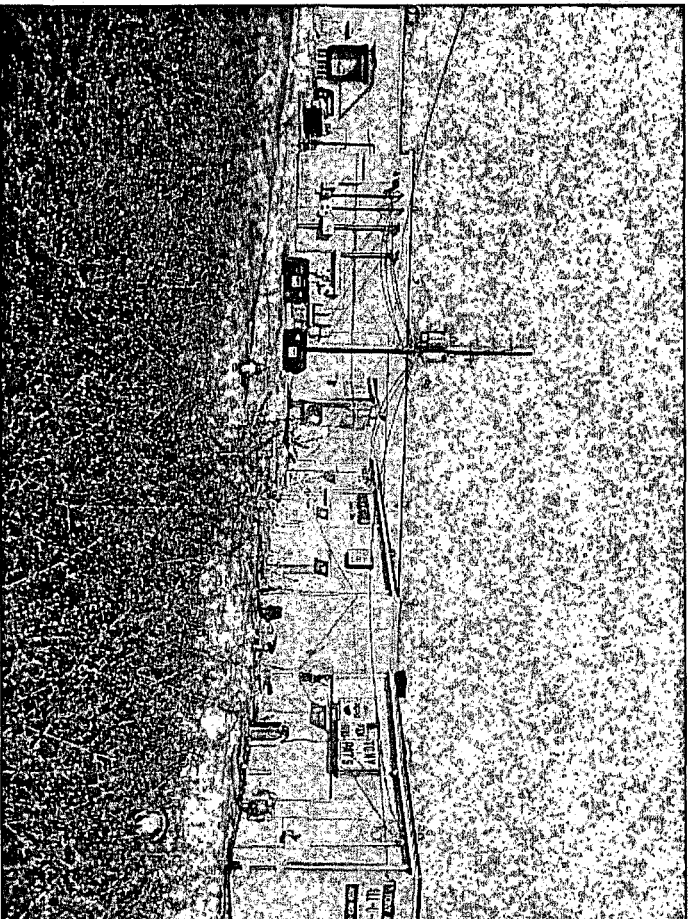


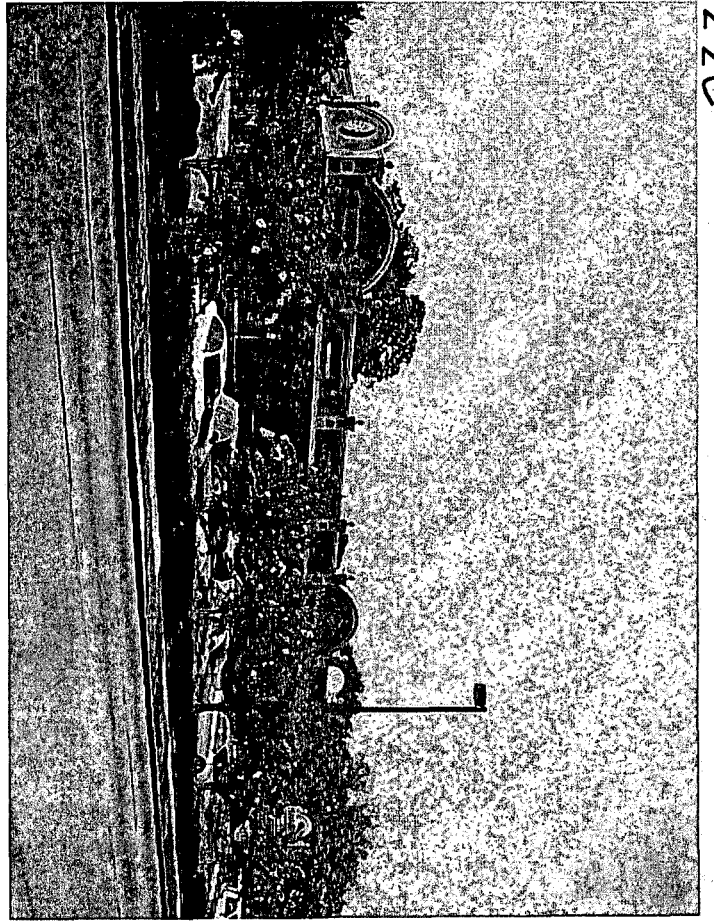
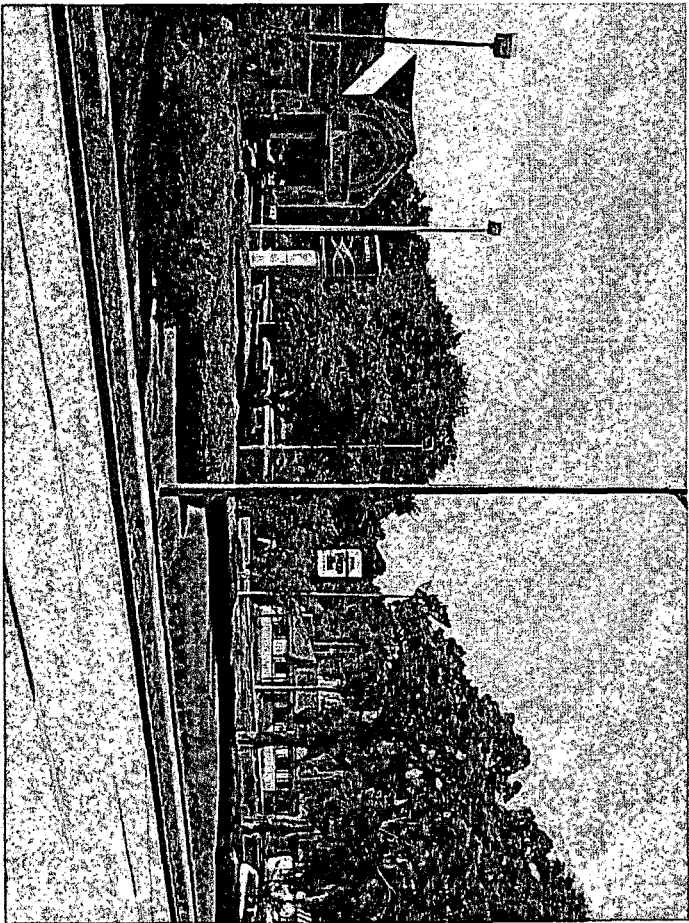
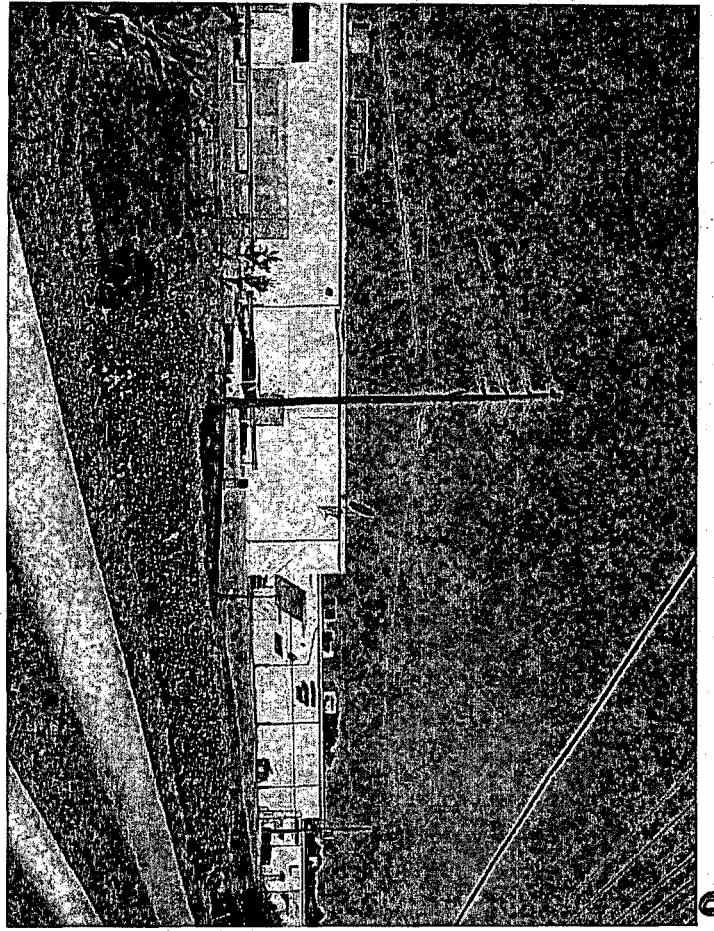
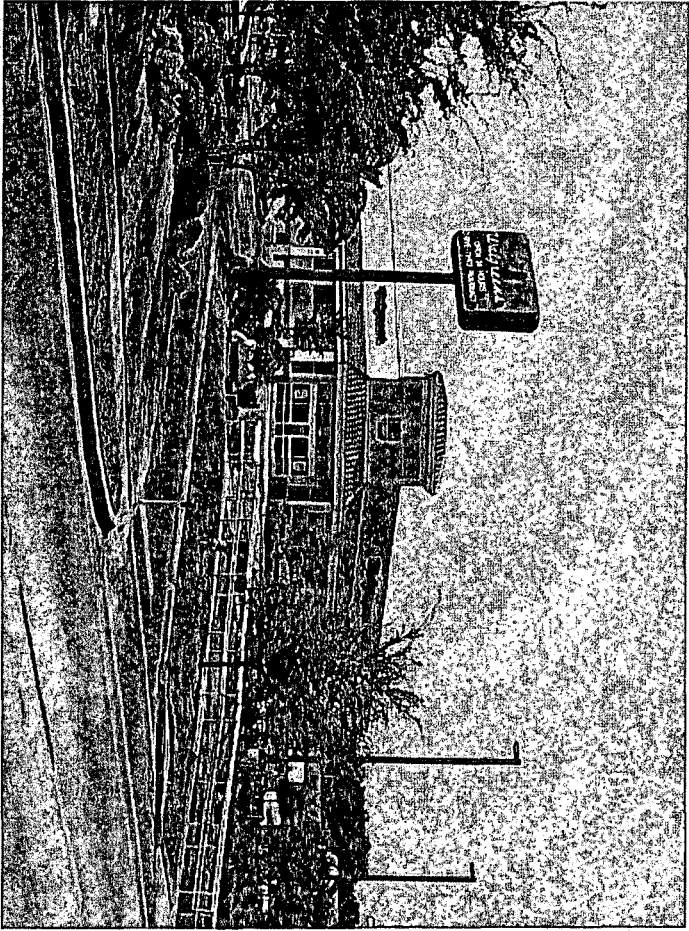
070622C



AERIAL PHOTOGRAPH

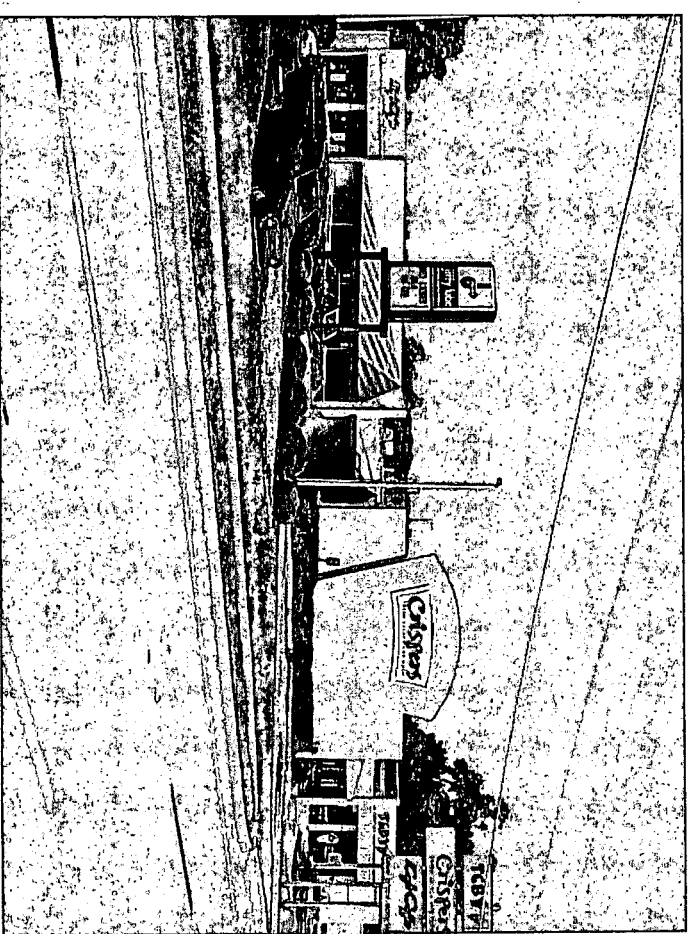
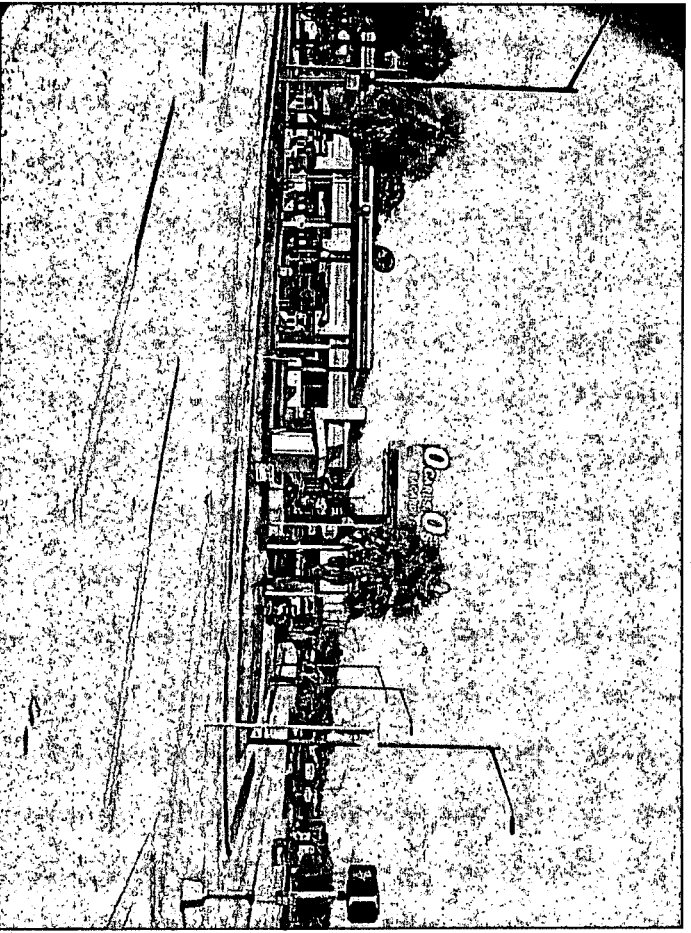
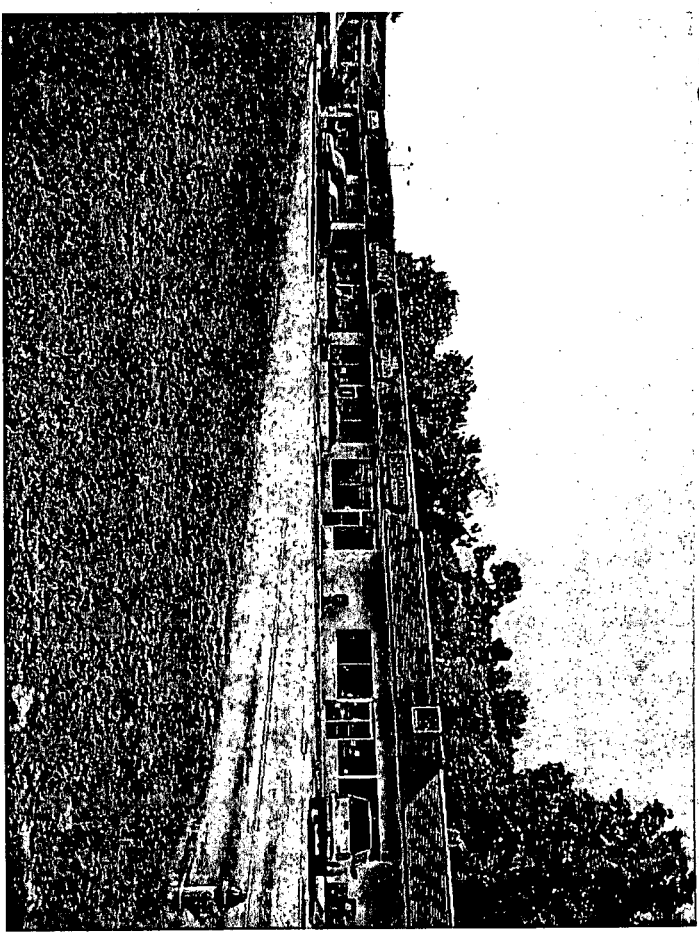
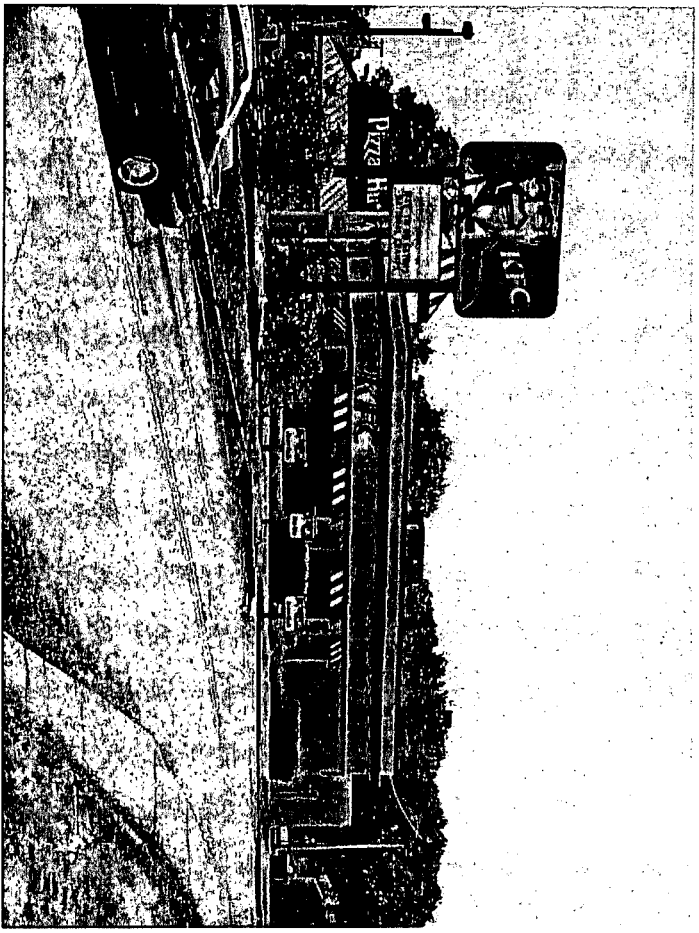
| Name | Petition Request | Map(s) | Petition Number |
|--|---|--------|-----------------|
| Erg, Derman & Associates, Inc agents for M & P Shopping Centers, LLC | Amend Existing Planned Development (Anchor Square) to Build Kohl's Retail Store | 4345 | 97POA-07PB |

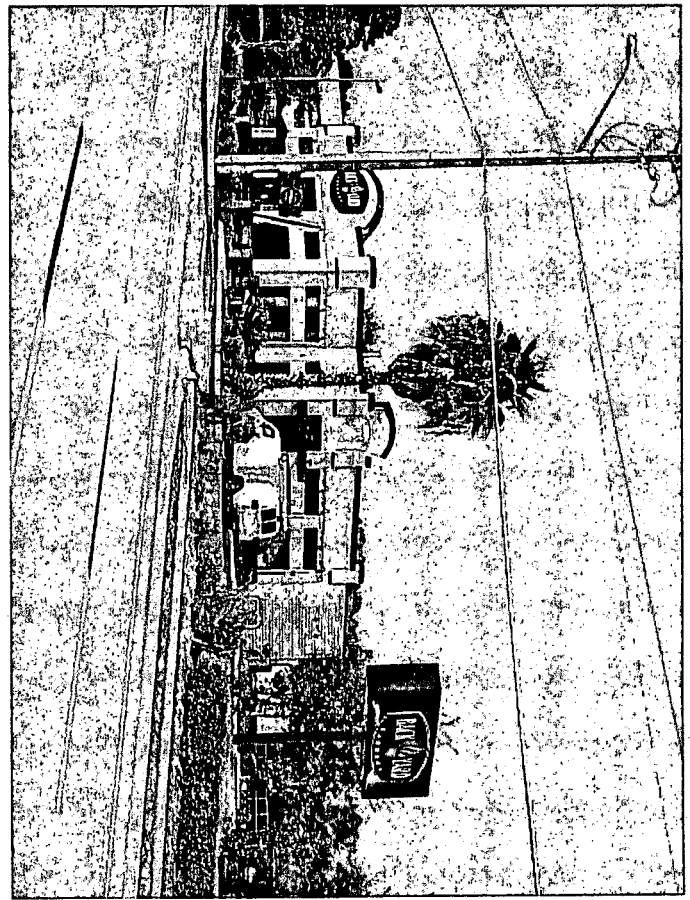
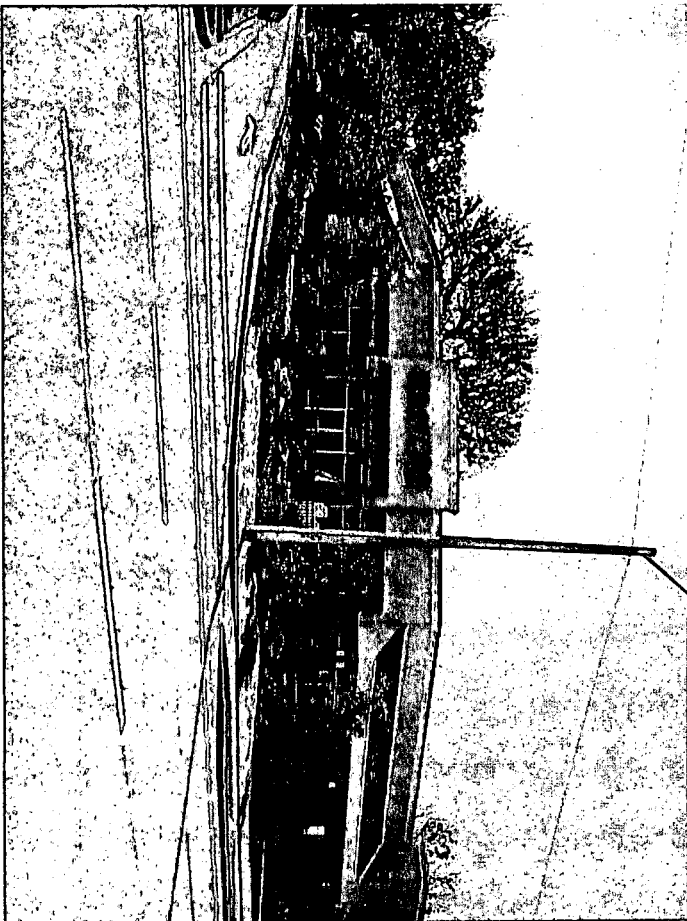
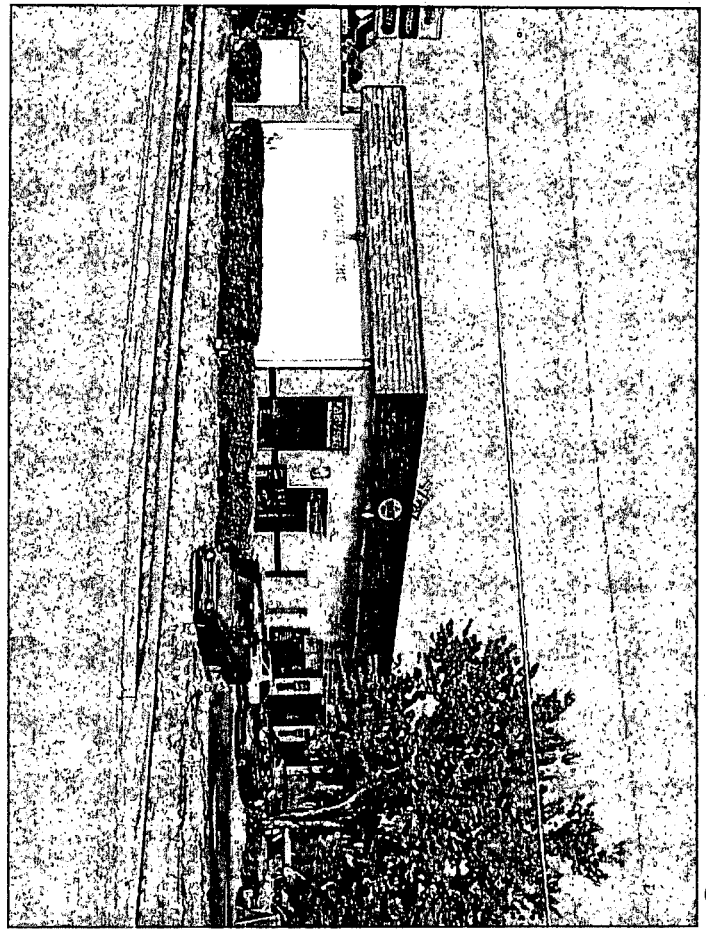
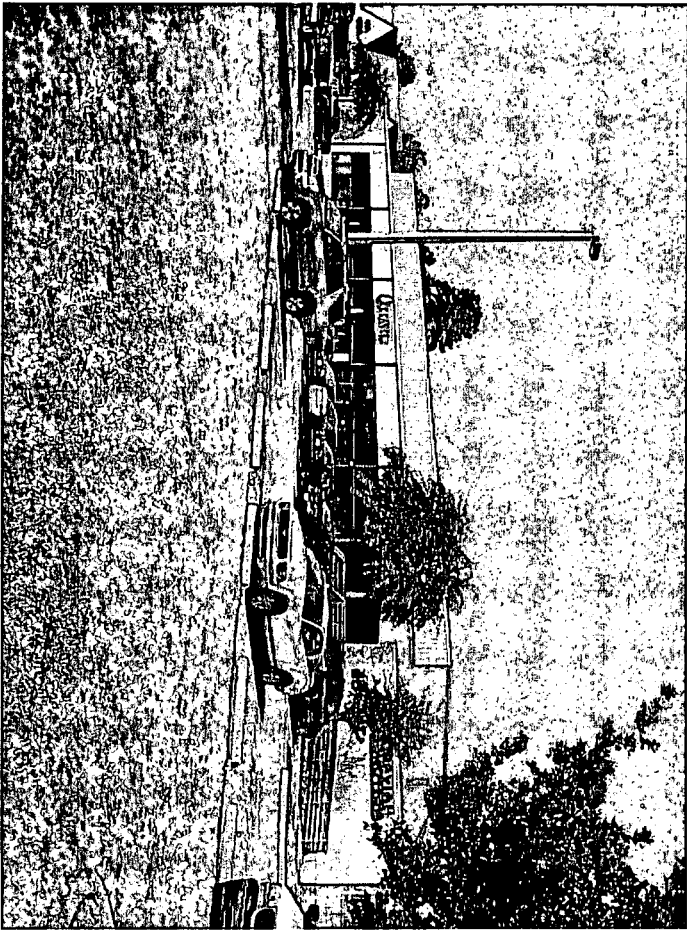




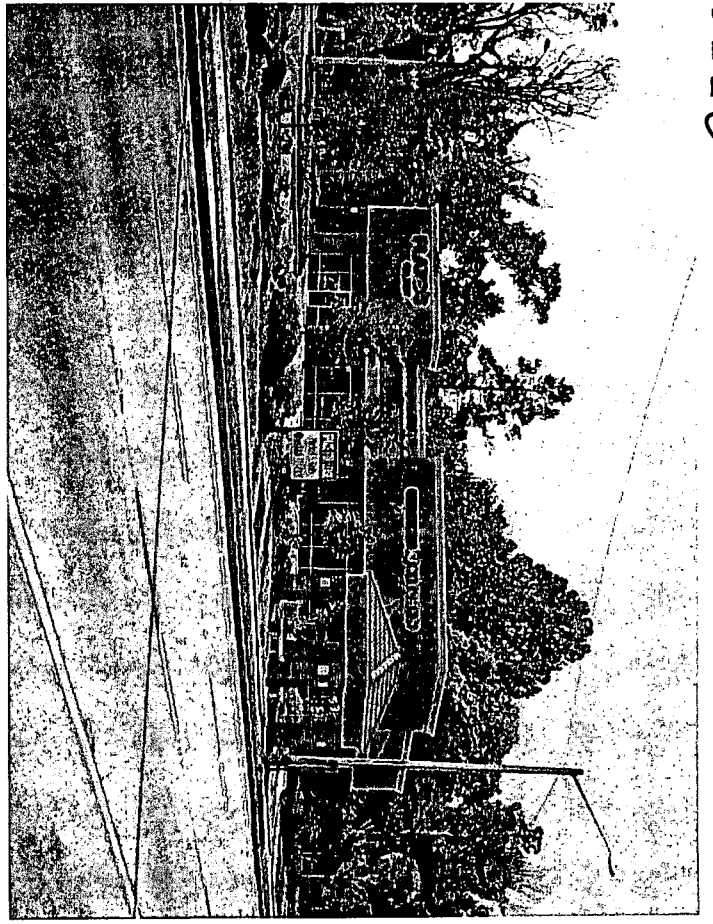
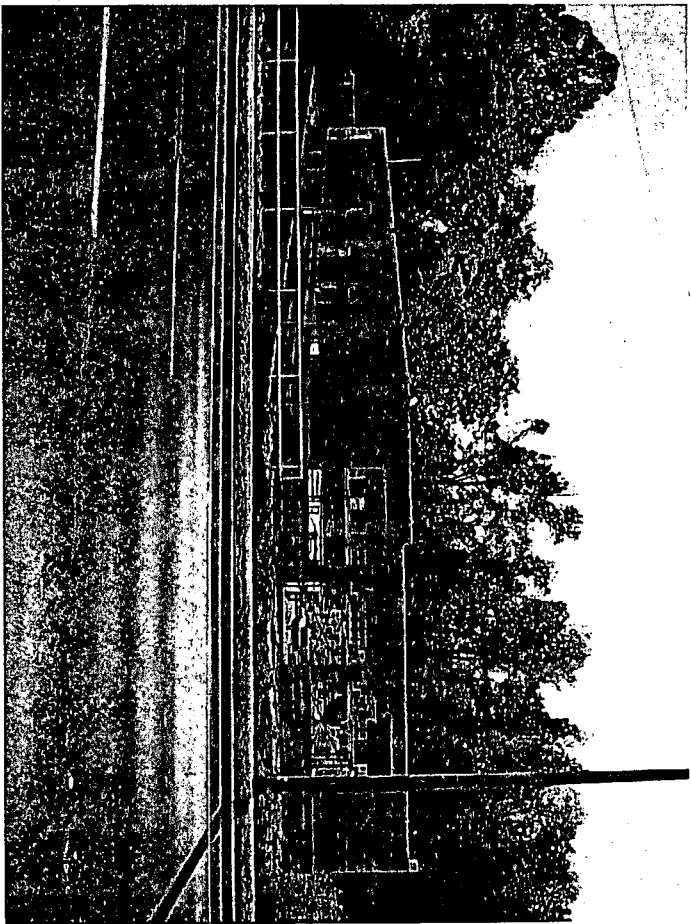
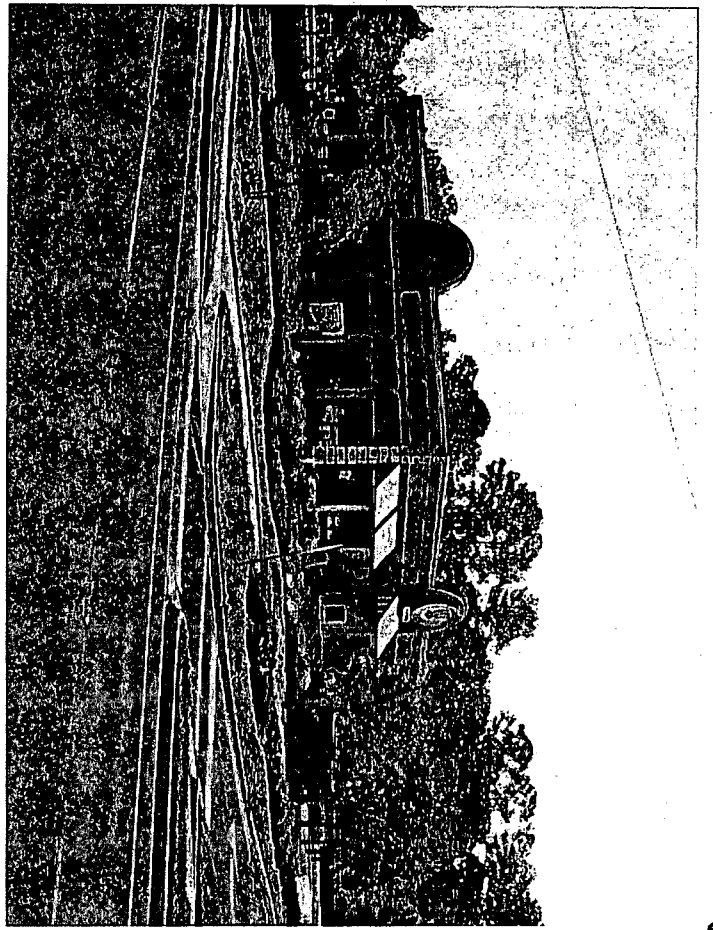
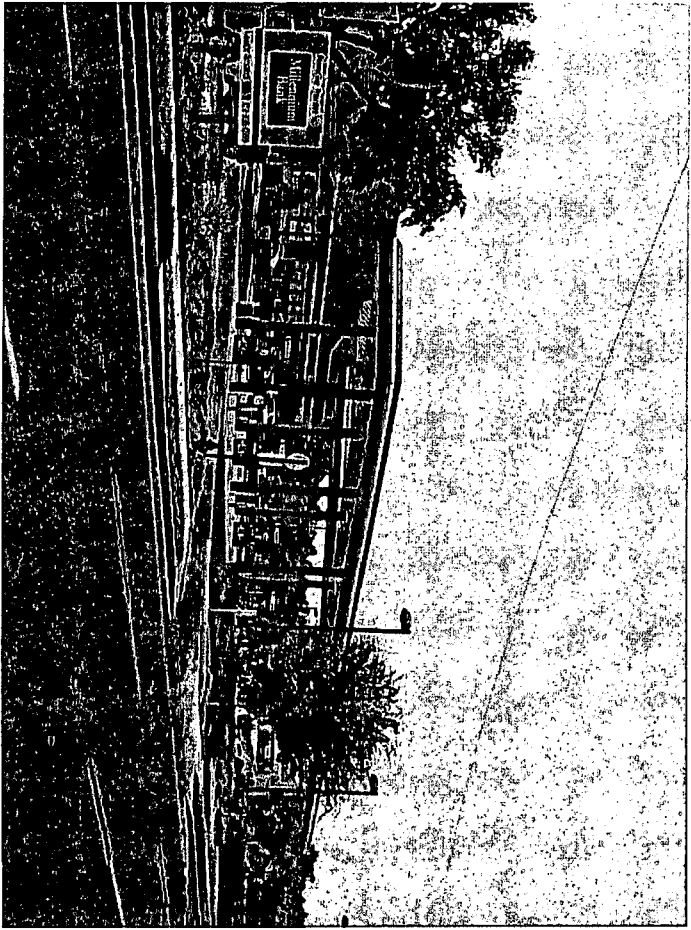
090622c

070622C

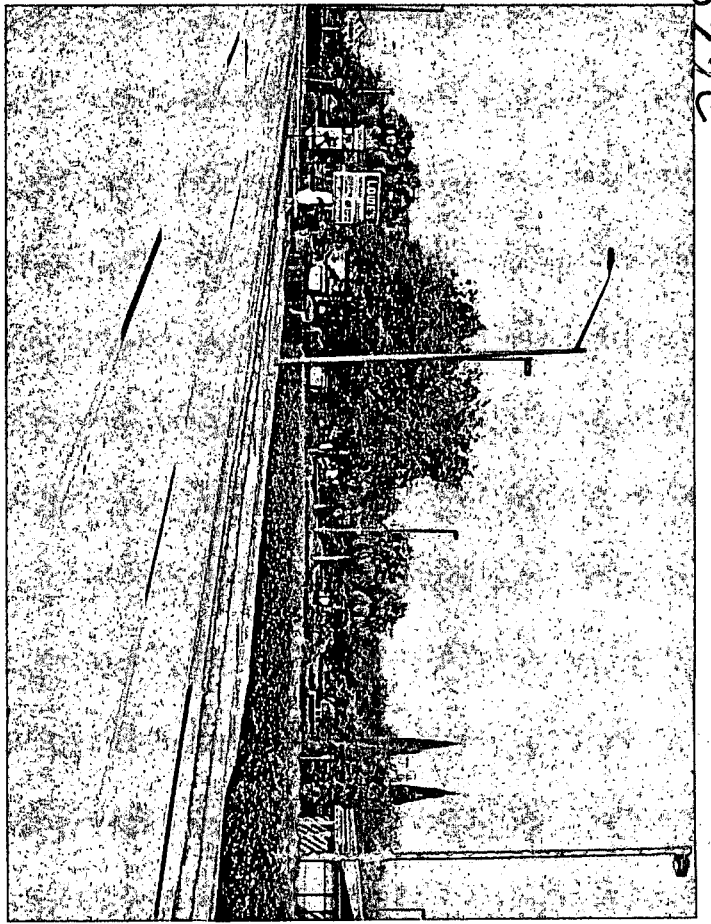
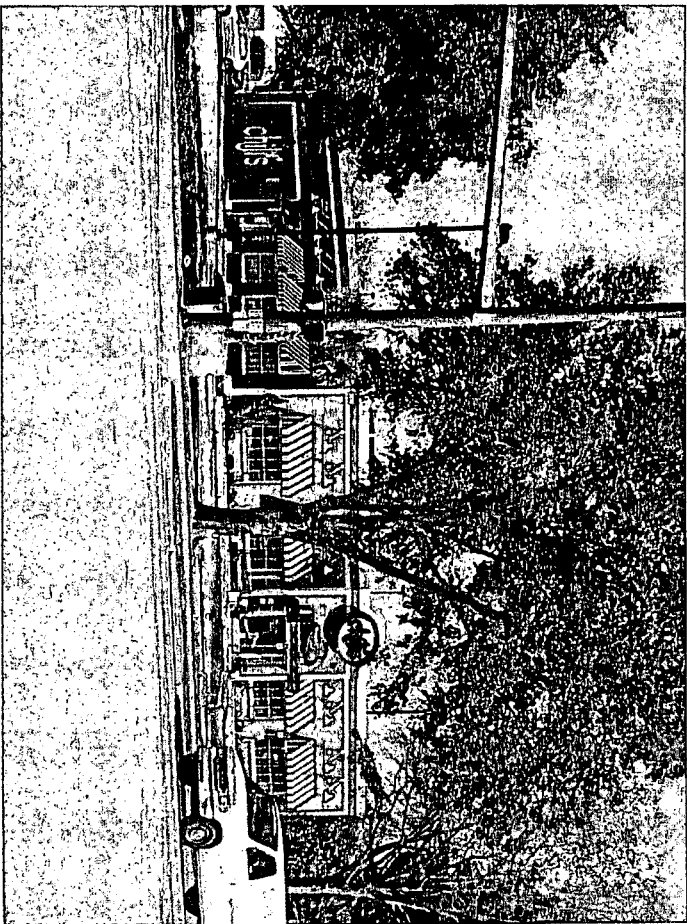
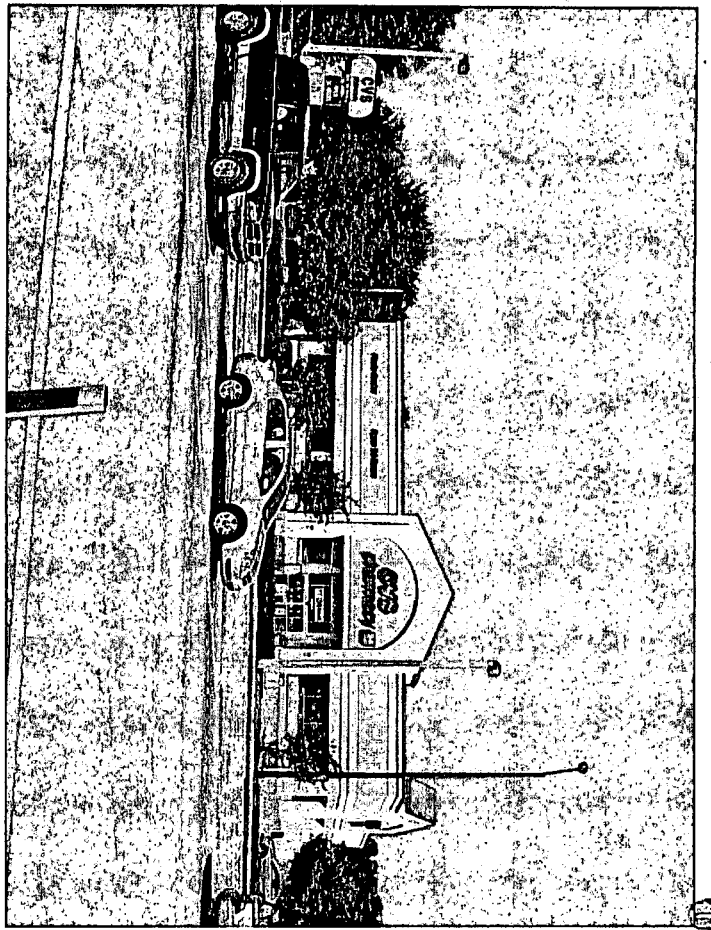
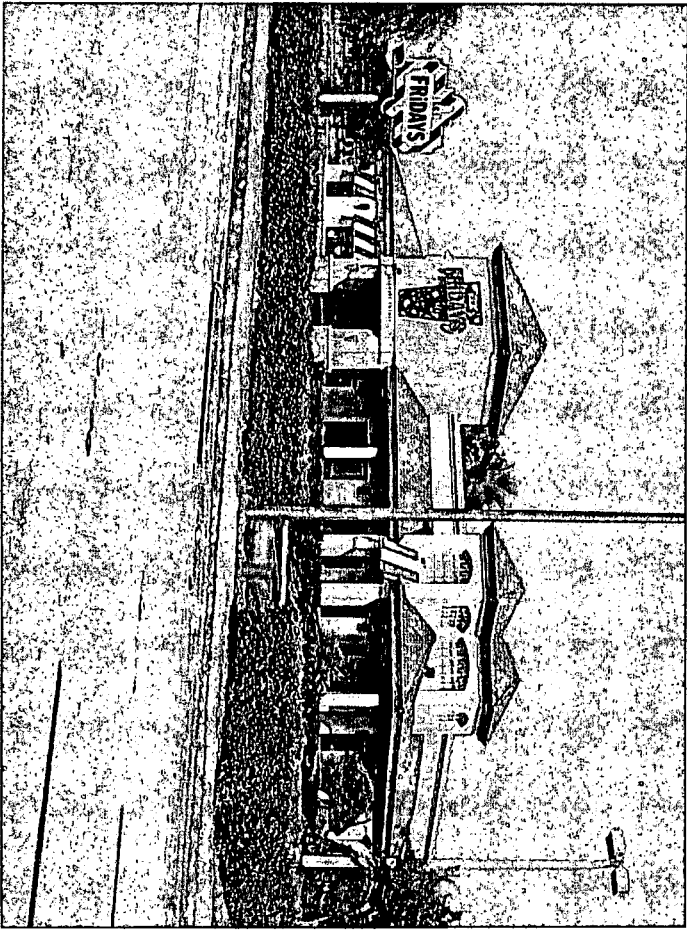




D70622C



070622C



070629C

070622c

- Planning Staff recommends approval of Pet. 97P DA-07PB with staff conditions.