

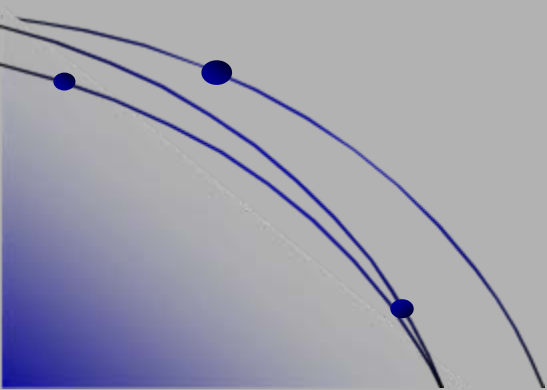
SW 62nd BLVD Extension

Review of Proposed Alternatives

City of Gainesville
City Commission Meeting
April 7, 2008



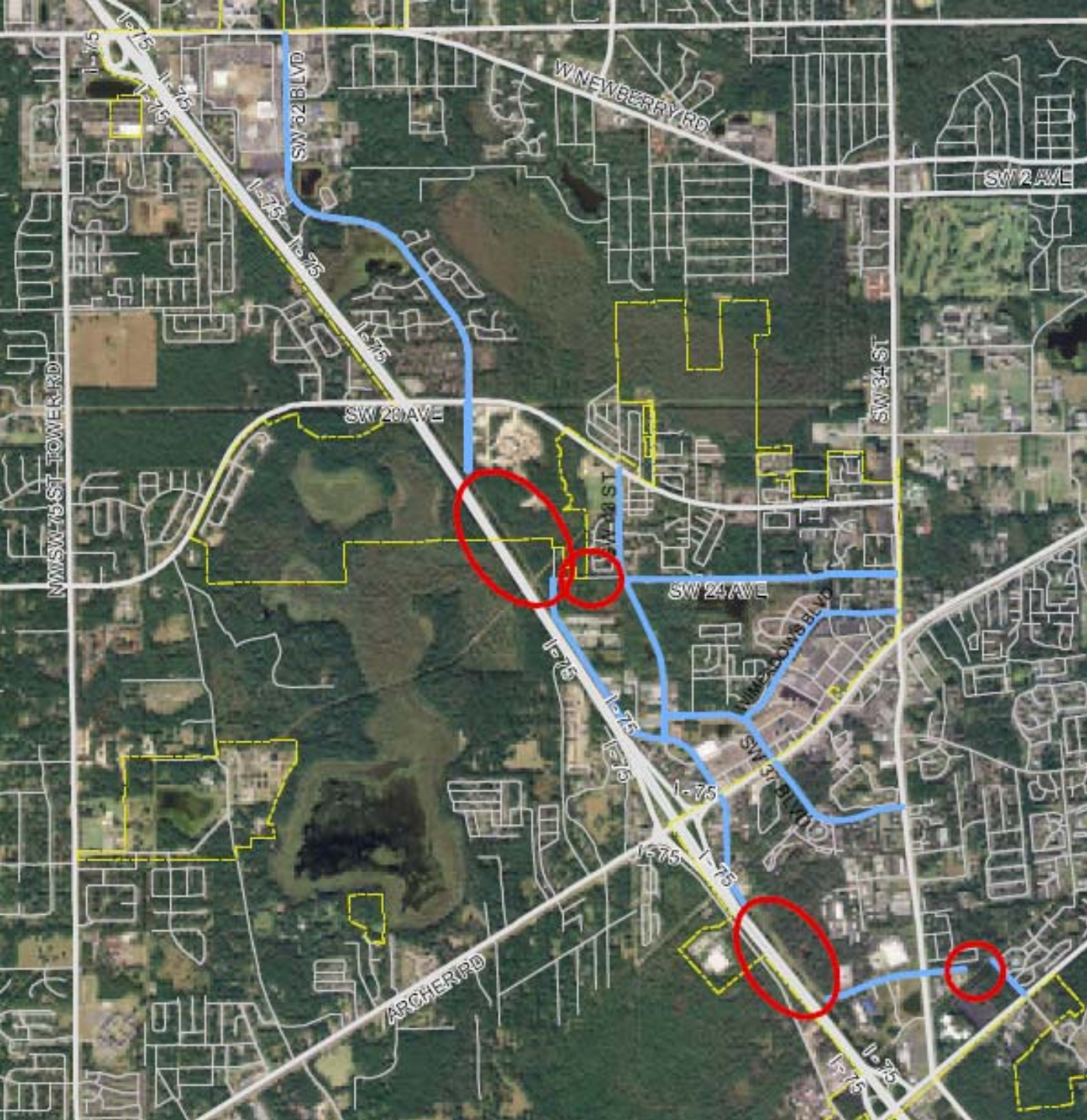
- HNTB retained by Alachua County to evaluate alternatives for the extension of SW 62nd Blvd from Newberry Road to Archer Road
- Aim to improve north-south connectivity


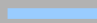



- SAFETEA-LU funds for PD&E study
- Evaluation criteria:
 - System impacts
 - Multi-modal operations
 - Environmental impacts
 - Right-of-way
 - Costs



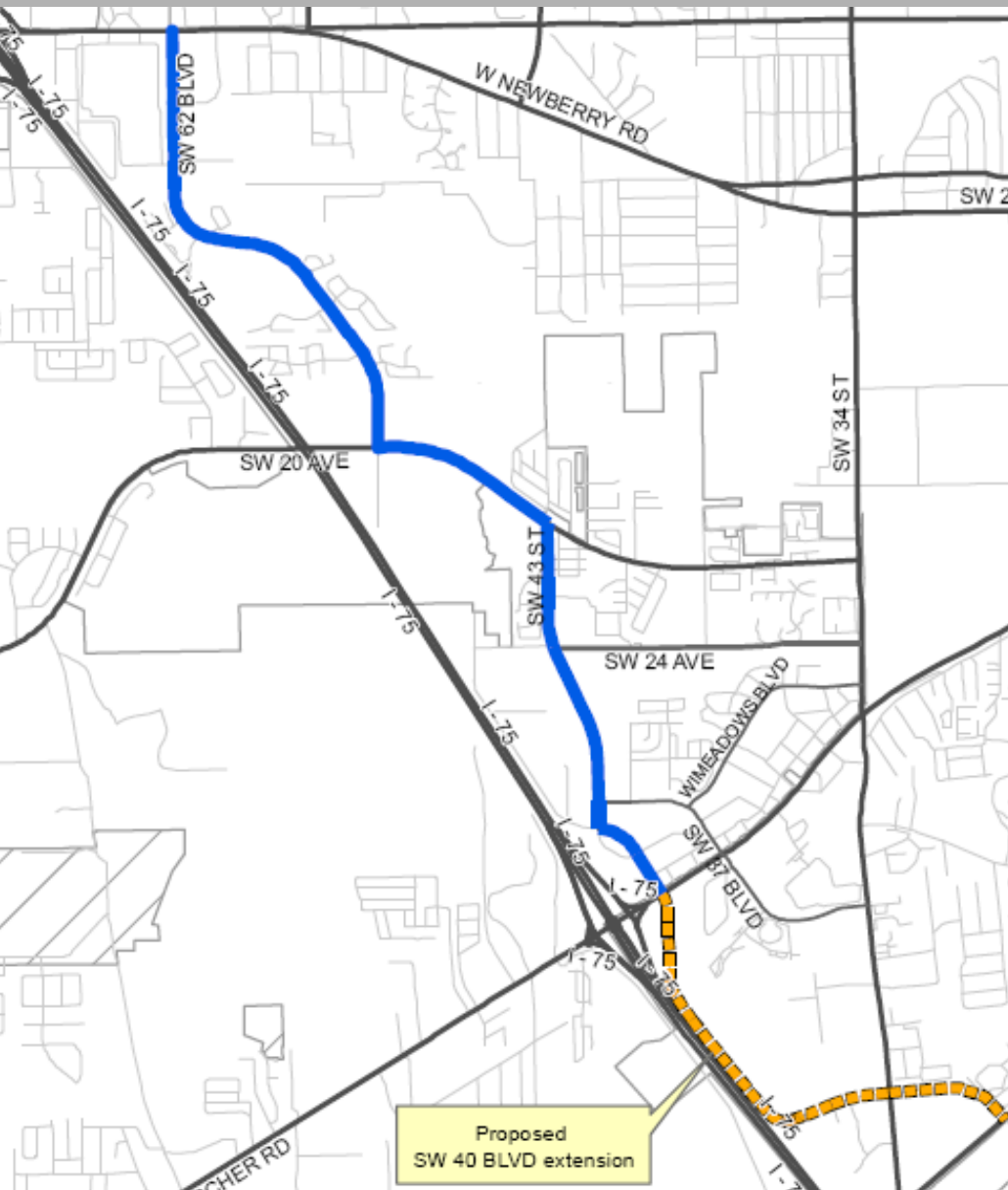
STUDY AREA #ROADWAY NETWORK



-  Gaps
-  Existing segments
-  City Limits

ALTERNATIVE 1

#071072



Proposed: 4-laning of existing roadways: SW 20th Ave between SW 62nd Blvd and SW 43rd St; SW 43rd St between SW 20th Ave and Archer Rd; connecting to Archer Rd at SW 40th Blvd. This option replicates the MTPo Option M alignment

Estimated Cost: \$73.5 million

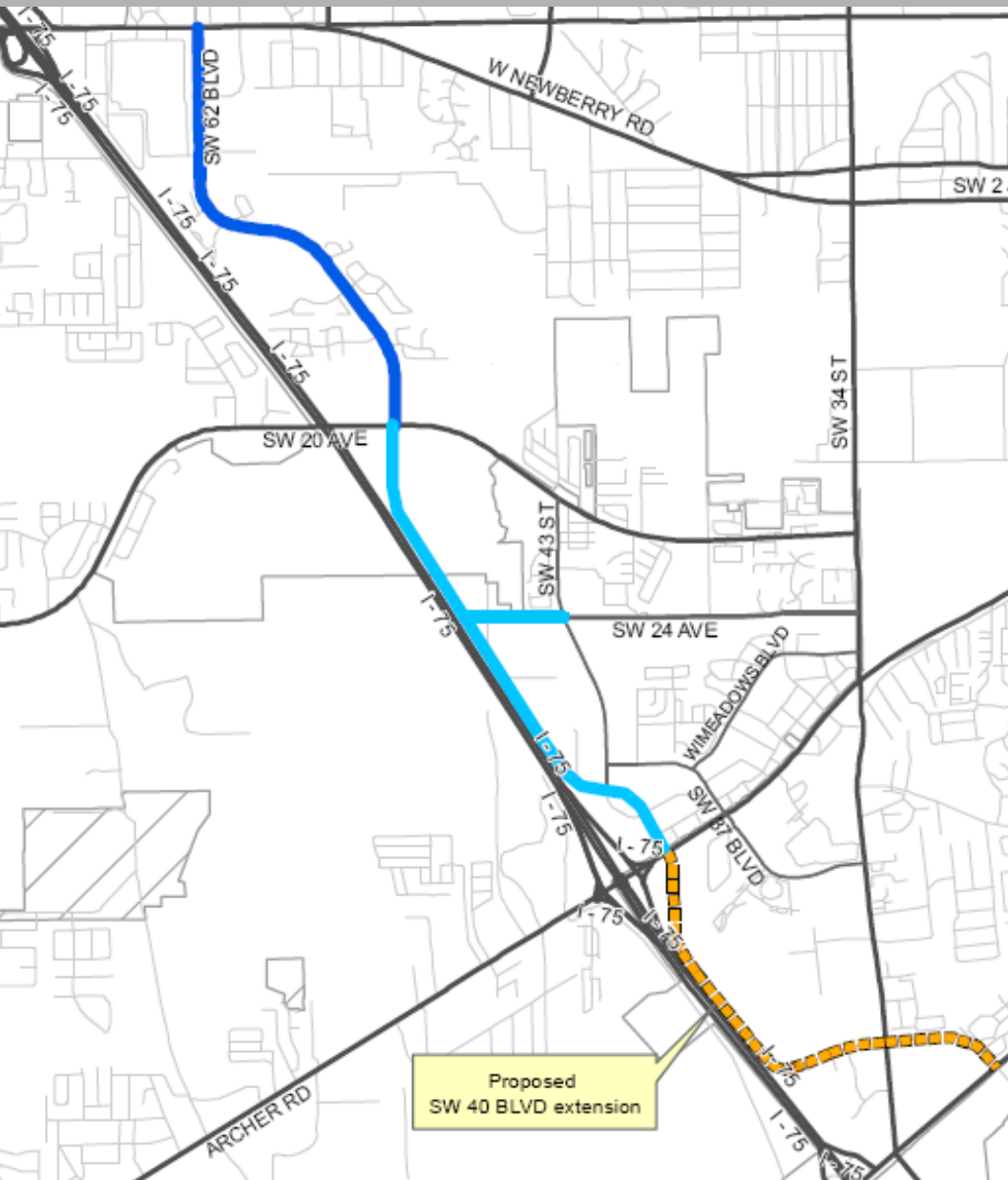
Pros: Least expensive
Adds lanes to existing roads

Cons: No added connectivity

Note: Additional roadway connectivity in this area is anticipated with the proposed Butler Plaza expansion

ALTERNATIVE 2

#071072



Proposed: Extension of SW 62nd Blvd / SW 52nd St as a new 4-lane segment south of SW 20th Ave, connecting to Archer Rd at SW 40th Blvd; also includes the extension of SW 24th Ave from SW 43rd St west to SW 62nd Blvd

Estimated Cost: \$95.8 million

Pros:

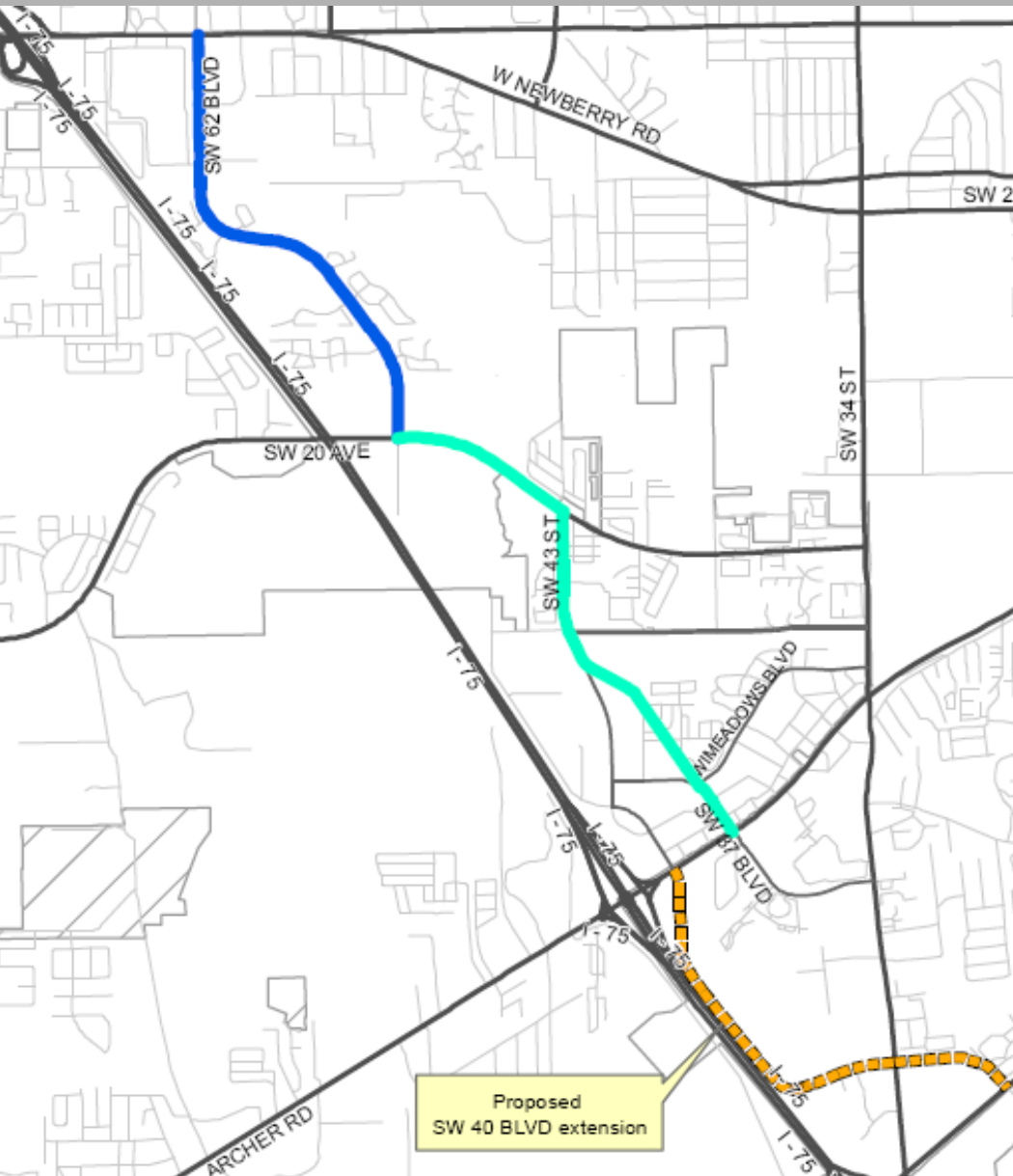
- Added connectivity
- Expanded route choice
- Direct connection to SW 34 St

Cons: Higher cost

Note: Additional roadway connectivity in this area is anticipated with the proposed Butler Plaza expansion

ALTERNATIVE 3

#071072



Proposed: 4-laning of existing roadways: SW 20th Ave between SW 62nd Blvd and SW 43rd St; SW 43rd St south to SW 24th Ave; new roadway alignment connecting to Archer Rd at SW 37th Blvd

Estimated Cost: \$81 million

Pros: Addition of a new connection

Cons: No alternative for through-traffic
Through-traffic routed to SW 37th Blvd to SW 34th St;
residential character

Note: Additional roadway connectivity in this area is anticipated with the proposed Butler Plaza expansion

Advisory Committee Recommendations

- TAC & MTPO staff recommended adoption of Alternative 2
- CAC recommended Alternative 3
- BPAB recommended the NO BUILD alternative

