

PW CENTER

Challenges & Opportunities

Public Works Department

April 5, 2010

Overview

- Background and Site Description
- Committed Changes
- Opportunities
- PW Needs
- Next Steps

Current Site

- Public Works Operations
- Material Storage
- Fleet Garage
- Building/Facilities Management
- Parks Operations
- Fueling Station

Total Acreage: 37.8 ac

Challenge

Current configuration and usage conflicts with neighboring residential uses

Portion of site in flood plain





Committed Changes

- Fleet garage relocation
- Material storage site relocation
- Relocation of street sweepers

• • • • •

- New PW Administration building and Traffic Management Center

Opportunities:

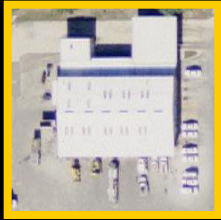
Fleet relocation

Explore options for City usage of existing building:

- *File storage* – transfer files from Iron Mountain facility; reduce costs

Current City expenditure averages \$3,150 / mo

- *Indoor storage of vehicles* – address needs for vehicle preservation and safety



Current building
houses offices;
storage; garage





Explore option for site split

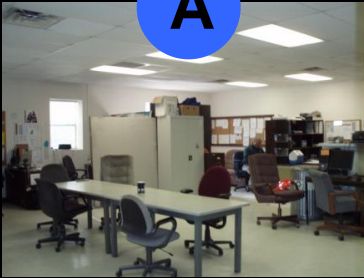
- North side continued use for PW administration & operations
- South side – evaluate usage in conjunction with redevelopment of Koppers site

Public Works Needs

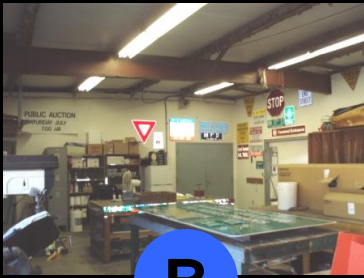
- Centralization of services
- Opportunity to evaluate site efficiency and operational needs
- Improve integration with surrounding community



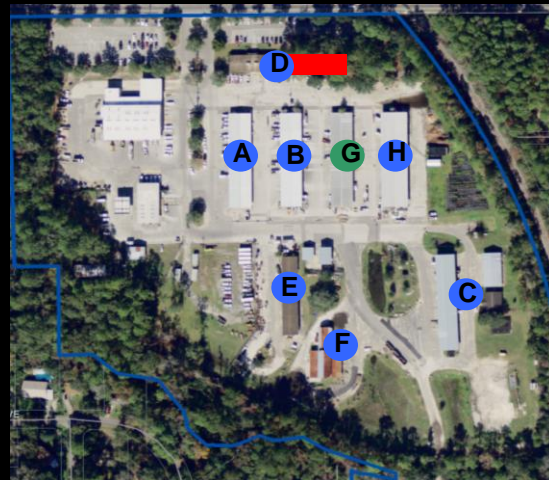
A



C



B



- A. PW Operations**
(Primary office use – survey; supervisors; training room)
- B. Traffic Operations**
(Signal/Sign shops; offices)
- C. PW Operations**
(vehicle storage; mosquito control shop)
- ...
- D. PW Administration**
- E. Warehouse**
- F. Equipment storage**
- G. Parks Dept. Operations**
- H. Facilities Maintenance**

Next Steps

- Definition of scope
 - Site split / function
 - Consultant services
- Consultant to evaluate site modifications to improve operational efficiency and minimize conflicts with surrounding residential areas
- Consultant to conduct a charrette and evaluate options for southern portion of site