



Thinking in 360 Degrees. Making it Happen.

#150723N



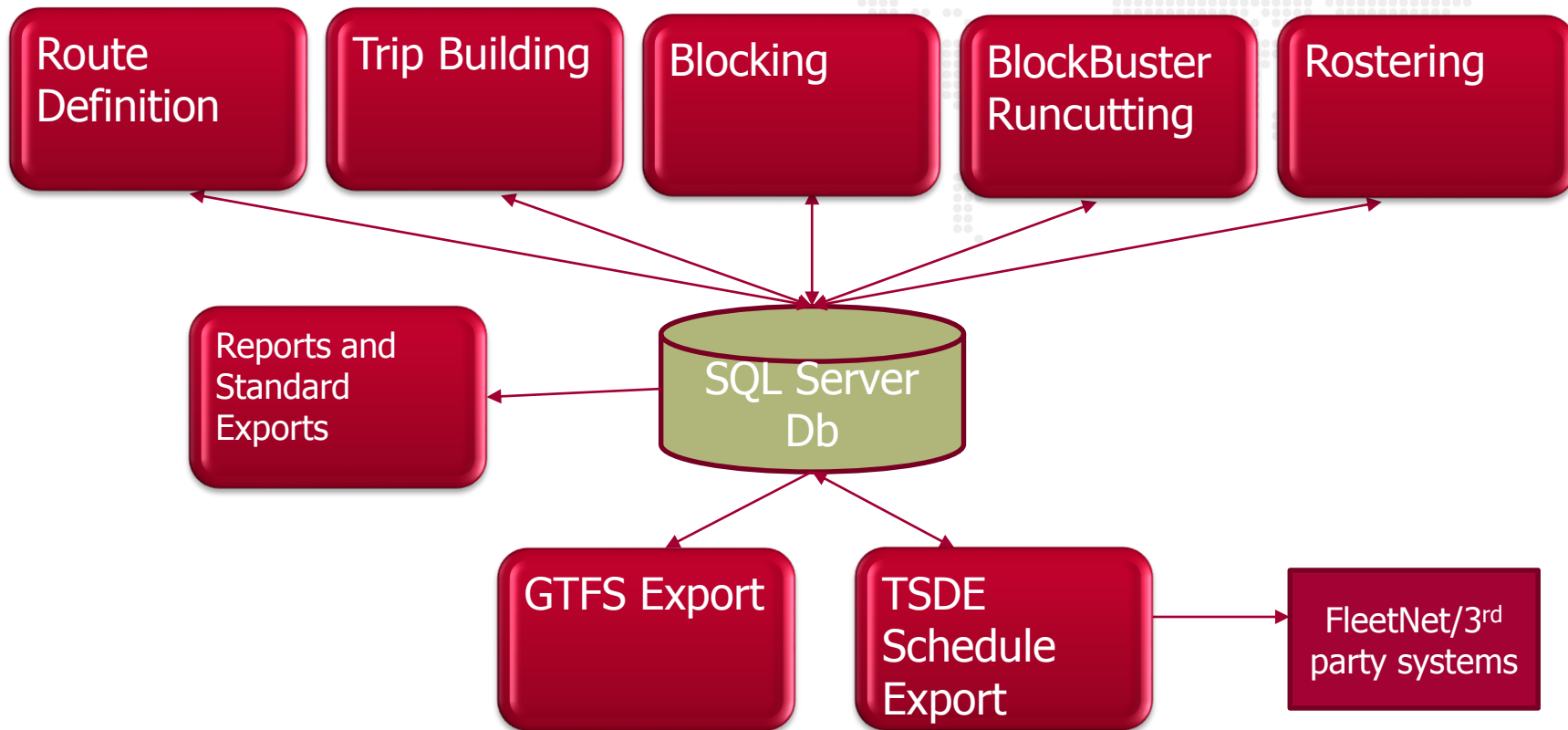
# Trapeze Group

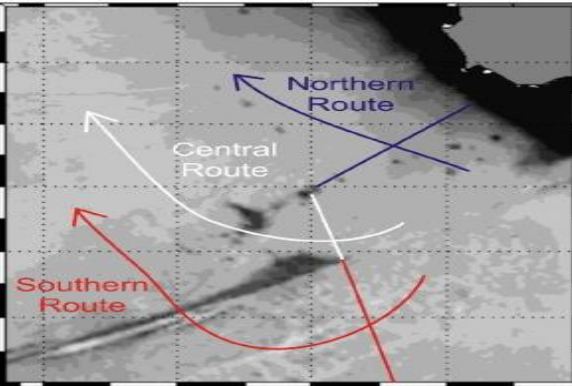
Presentation to RTS Gainseville – December 2<sup>nd</sup>, 2015



# System Overview

## Core System Functions – GIS, Security, Audit, and Bulk Processing





# Route Definition

- Comprehensive tool to define your Route Infrastructure
- Build and Manage Patterns
- Easily Define Route Traces using GIS Tools
- Draw Route and Auto Extract Nodes/Stops
- Select Stop Patterns for Downstream Systems

Route Definition

Trip Building

Blocking

Runcutting

Rostering





# Trip Building

- Single or multi-route trip building function
- Build Trips Manually or Utilize Numerous Tools
- Setup Runtimes (Pattern/Node to Node) for Various Times Throughout Day
- Build off Existing Trips for Transfer Management
- Assign Exceptions and Vehicle Types as Required

Route Definition

Trip Building

Blocking

Runcutting

Rostering





#150723N



## Blocking

- Comprehensive module to assist in the optimization of your vehicles
- Block using Automatic or Manual Tools
- Adjust Parameters for Blocking Rules
- Utilize Statistical Tools for Reviewing Blocks

Route Definition

Trip Building

Blocking

Runcutting

Rostering





#150723N



## Runcutting

Route Definition

Trip Building

Blocking

Runcutting

Rostering

- Allows Schedulers and Managers to Relate to Both Time and Pay
- Parameter Settings User-Definable (Run Types, Costing, Penalties)
- Uses a Dollar Penalty Approach for Balancing 'Best Streetable' vs 'Least Cost'
- Easily Compares Various Scenario's (Time, Pay, Averages, Run Details)
- Excellent for Union Negotiations





#150723N



## Rostering

Route Definition

Trip Building

Blocking

Runcutting

Rostering

- Build Weekly Operator Work using Runs from Runcutter
- Parameter Settings User-Definable (Roster Types, Costing, Penalties)
- Algorithms to create and improve Rosters to minimize Weekly Pay
- Easily Compares Various Scenario's (Time, Pay, Averages)
- Excellent for Union Negotiations

