

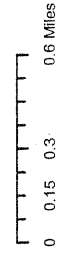
# Zone C Expansion of the Transportation Concurrency Exception Area

Gainesville, Florida

— Gainesville City Limits

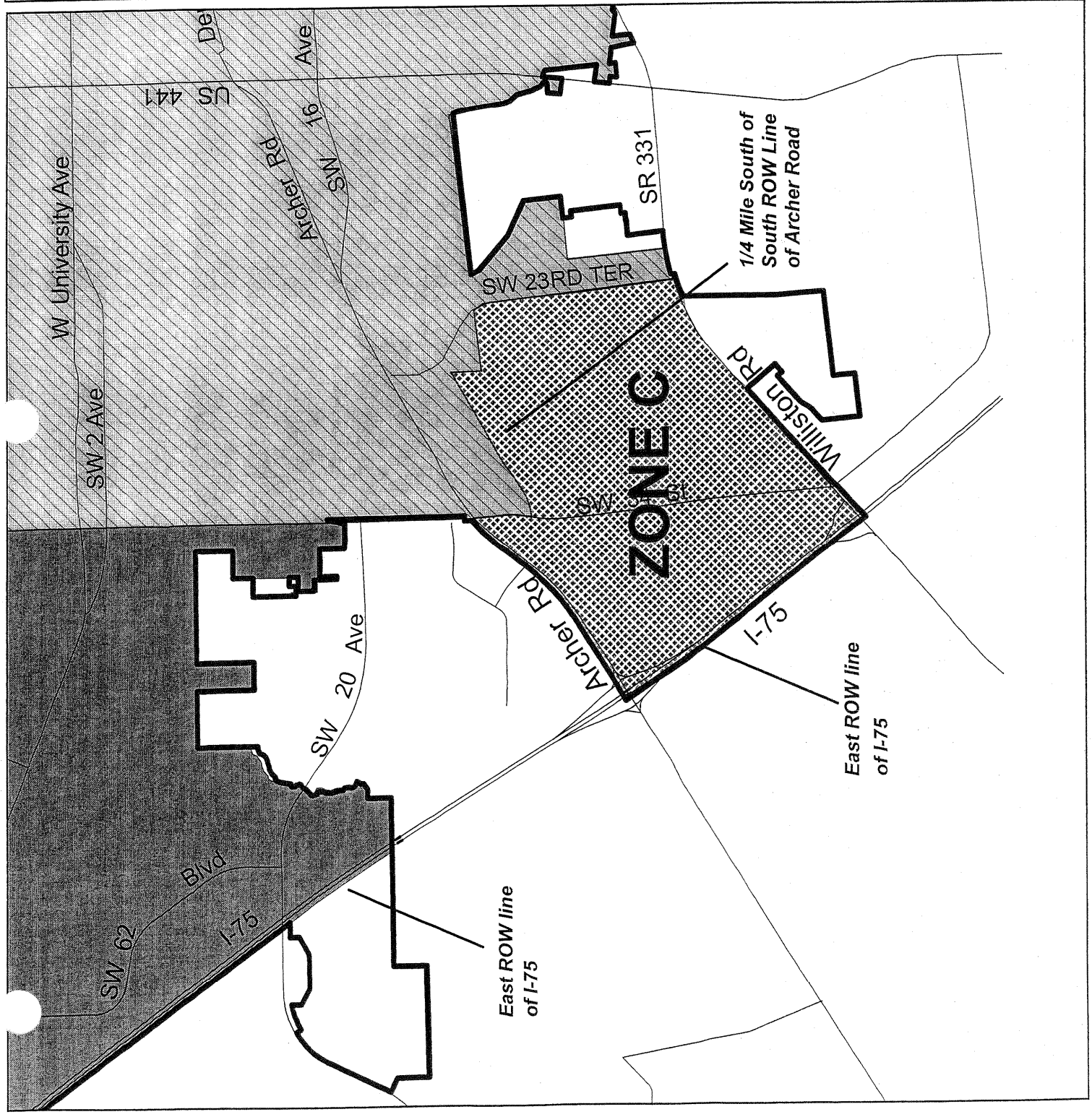
Transportation Concurrency Exception Area Sub-Zones

- Zone A
- Zone B
- Zone C



File: Steve\_2003/Onella\_TCEA/May-Dec\_2004 Updates/TCEA\_Map2-PropExp\_ZoneC\_Detail

City of Gainesville  
Gainesville, Florida  
Prepared by  
Dept. of Community Development  
April 14, 2005






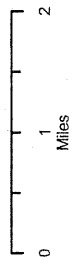
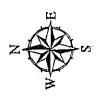
# Transportation Concurrency Exception Area

Gainesville, Florida

— Gainesville City Limits

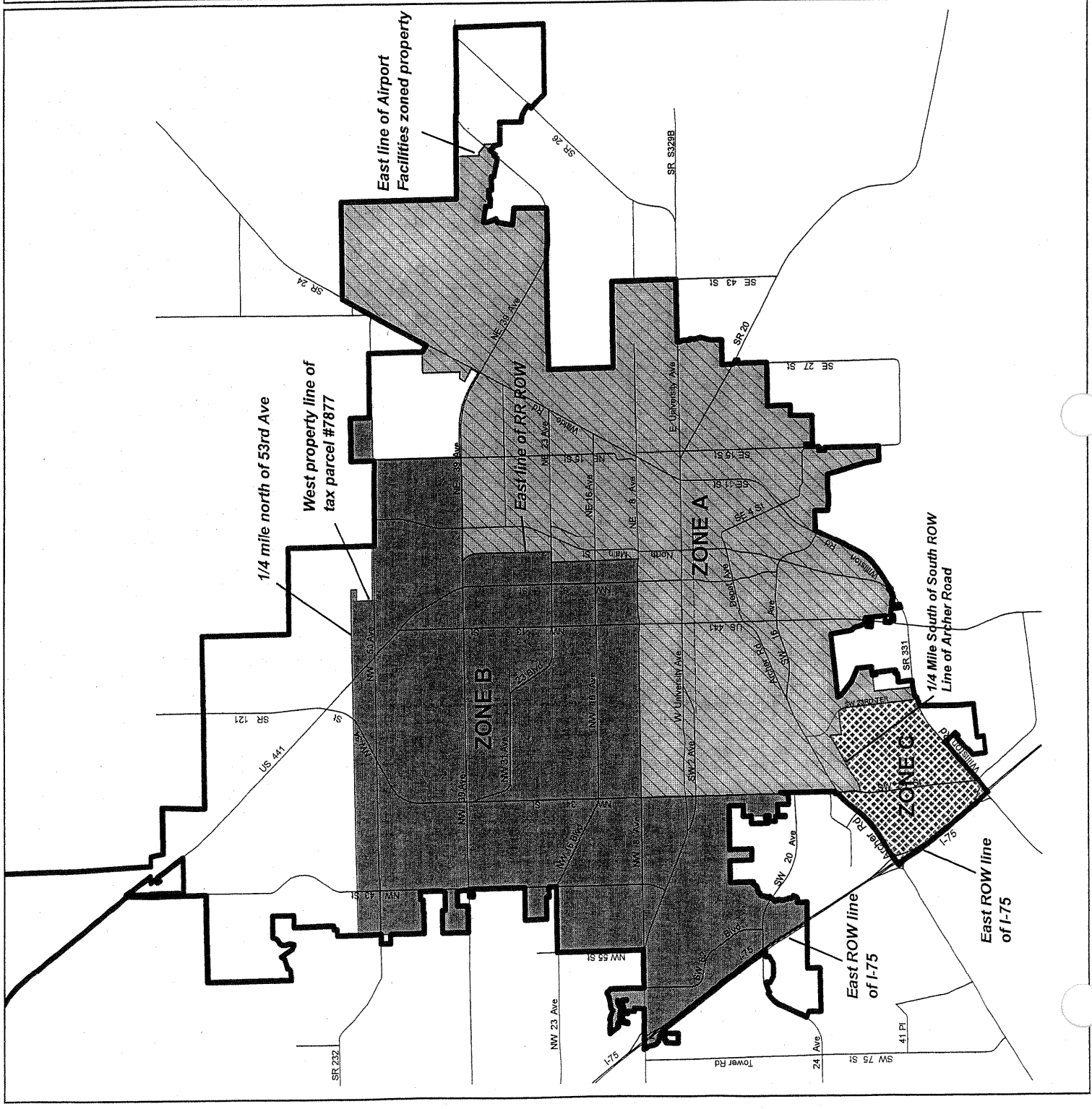
Transportation  
Concurrency  
Exception Area Sub-Zones

-  Zone A
-  Zone B
-  Zone C



File: Steve\_2003\Onella\_TCEAN\May-Dec 2004  
Updates\TCEA\_Map2-PropExp\_ZoneC\_Full

City of Gainesville  
Gainesville, Florida  
Prepared by  
Dept. of Community Development  
April 14, 2005

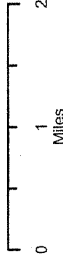


# FUTURE LAND USE MAP SERIES

Designated Urban  
Redevelopment Area

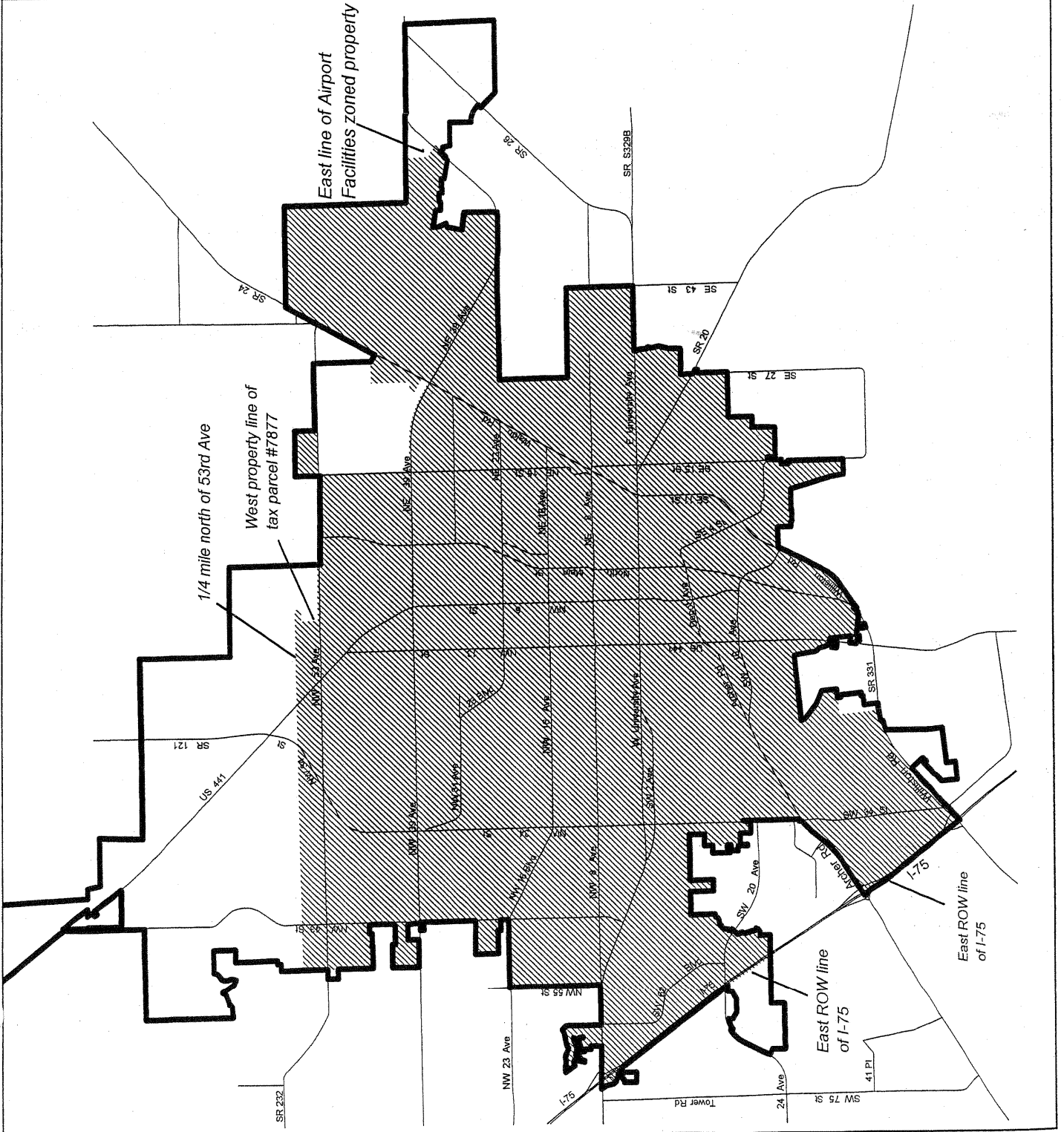
Designated Urban  
Redevelopment Area

Gainesville City Limits



File: Steve\_2003/Onelia\_TCEA/May-Dec 2004  
Updates/TCEA\_Map3-FLU-URA

City of Gainesville  
Gainesville, Florida  
Prepared by  
Dept. of Community Development  
December 2, 2004



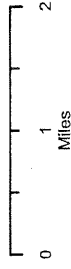
# Transportation Concurrency Exception Area

Gainesville, Florida

Transportation Concurrency  
Exception Area

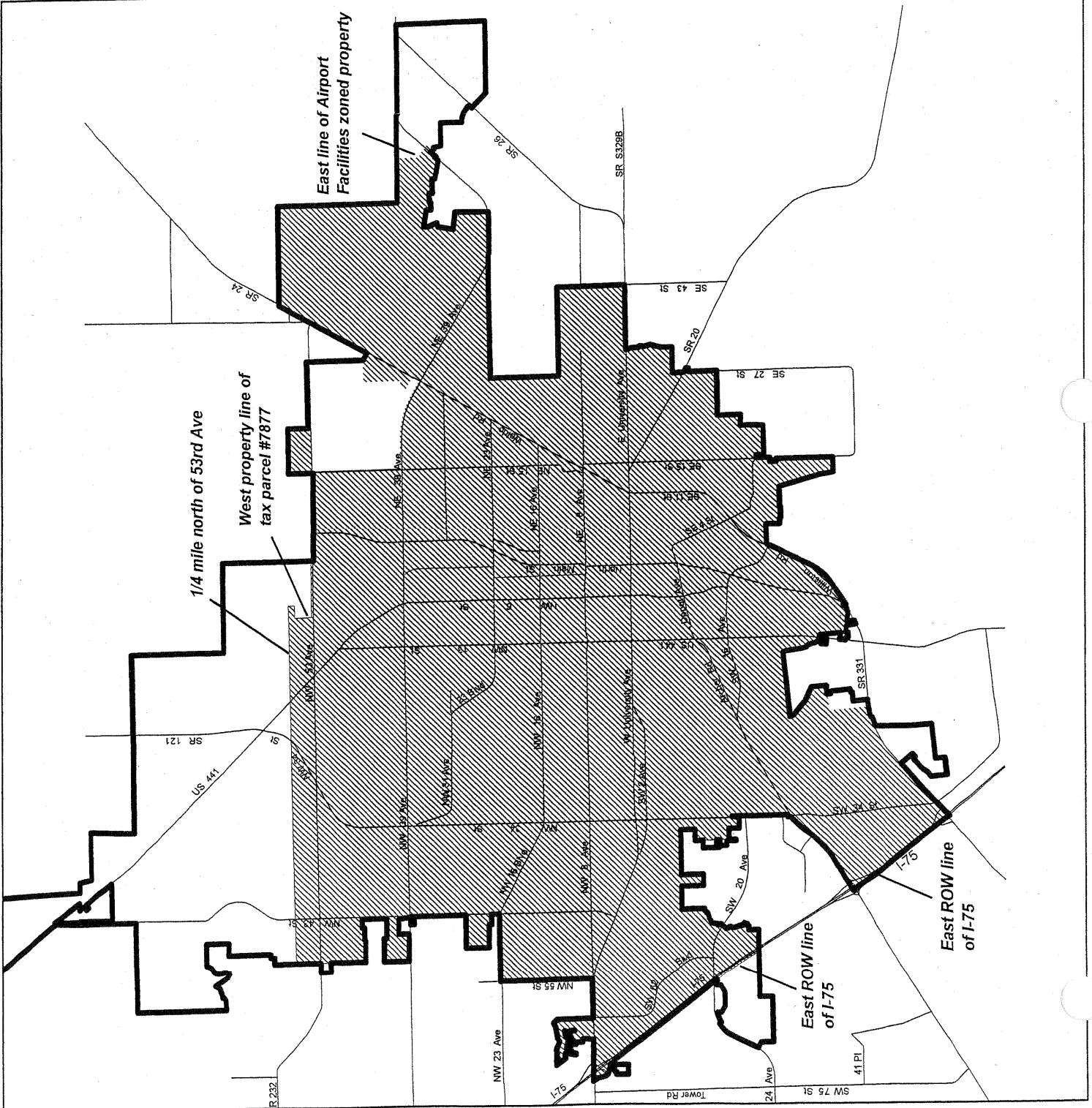


Gainesville City Limits



File: Steve\_2003/Onella\_TCEA/May-Dec 2004  
Updates/TCEA\_Map5-Exist-All

City of Gainesville  
Gainesville, Florida  
Prepared by  
Dept. of Community Development  
December 2, 2004



# EXISTING & POTENTIAL TRANSIT HUBS

## Transportation Mobility Map Series

### Existing Hubs

6. NW 13th Street Activity Center
12. Oaks Mall/North Florida Regional Hospital
15. University of Florida/Shands/VA Hospital
16. Downtown Plaza
20. Butler Plaza/Archer Road

### Potential Hubs

1. Northwood Shopping Center
2. Hunter's Crossing
3. Ridgeway Village Shopping Area
4. Hancock Village/Townsend
5. Exchange Center
7. Winn/Dixie/Big Lots
8. Millhopper/Thornebrook Village
9. Northgate Shopping Center
10. Main Street Shopping Center
11. Camp/Filmer (Waldo Road)
13. Corporate park
14. Westgate/Westgate Regency
16. Regional Transit System Transit Center Site (within downtown area); to be built
17. Waldo Road/East University Avenue
18. Food Lion
19. South Main Street & South 16th Avenue

### P&R

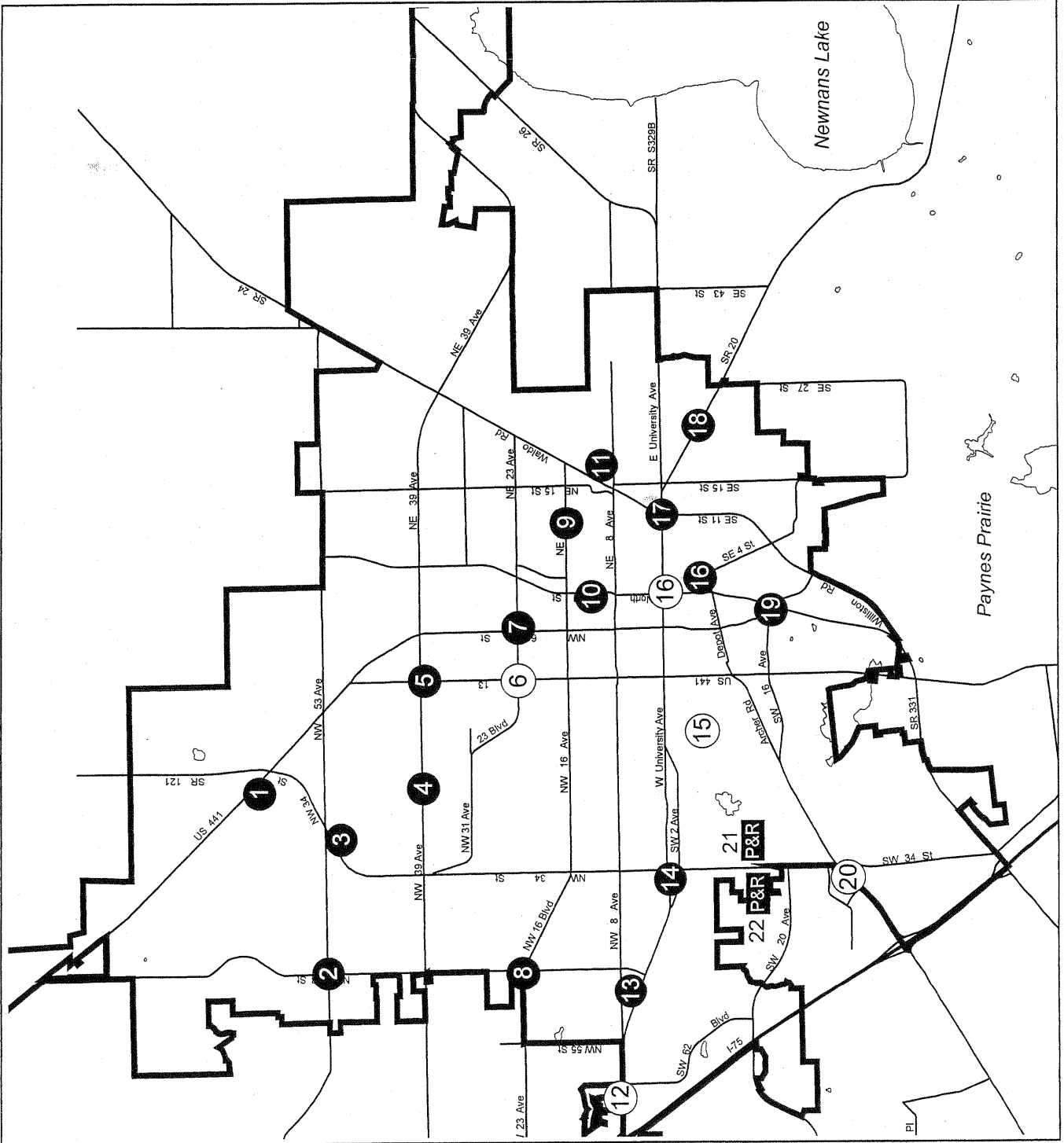
21. Park & Ride Facility
22. Harn Museum
- UF Conference Center

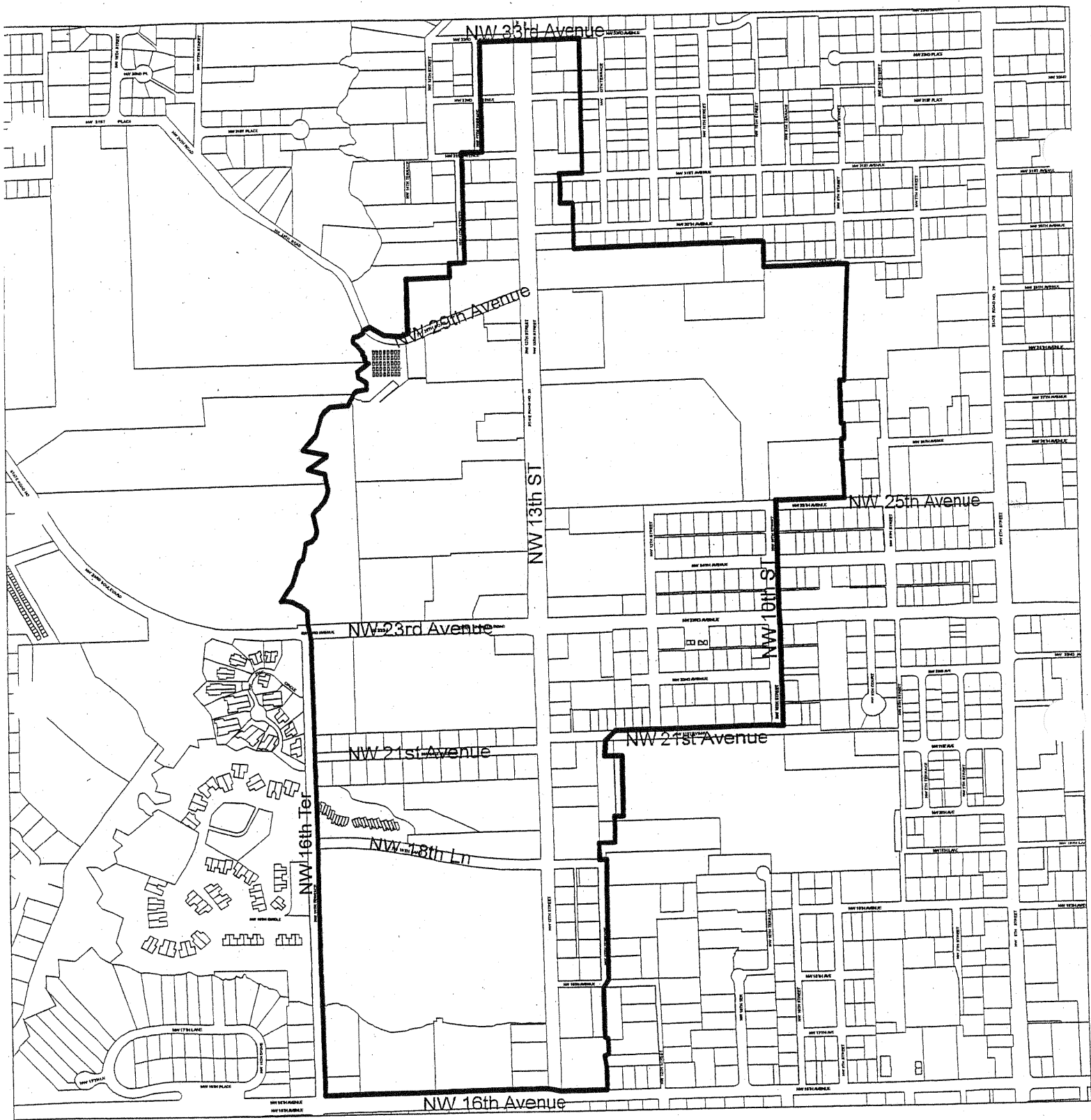
### Gainesville City Limits

**City of Gainesville  
Gainesville, Florida**


Prepared by the  
Dept of Community Development  
December 2, 2004

0.7 0.35 0 0.7 Miles





NW 13th Street Special  
 Concurrency Redevelopment  
 Credit Area

 Boundary



**City of Gainesville**  
**Gainesville, Florida:**  
 Prepared by the  
 Dept of Community Development  
 November 19, 2004