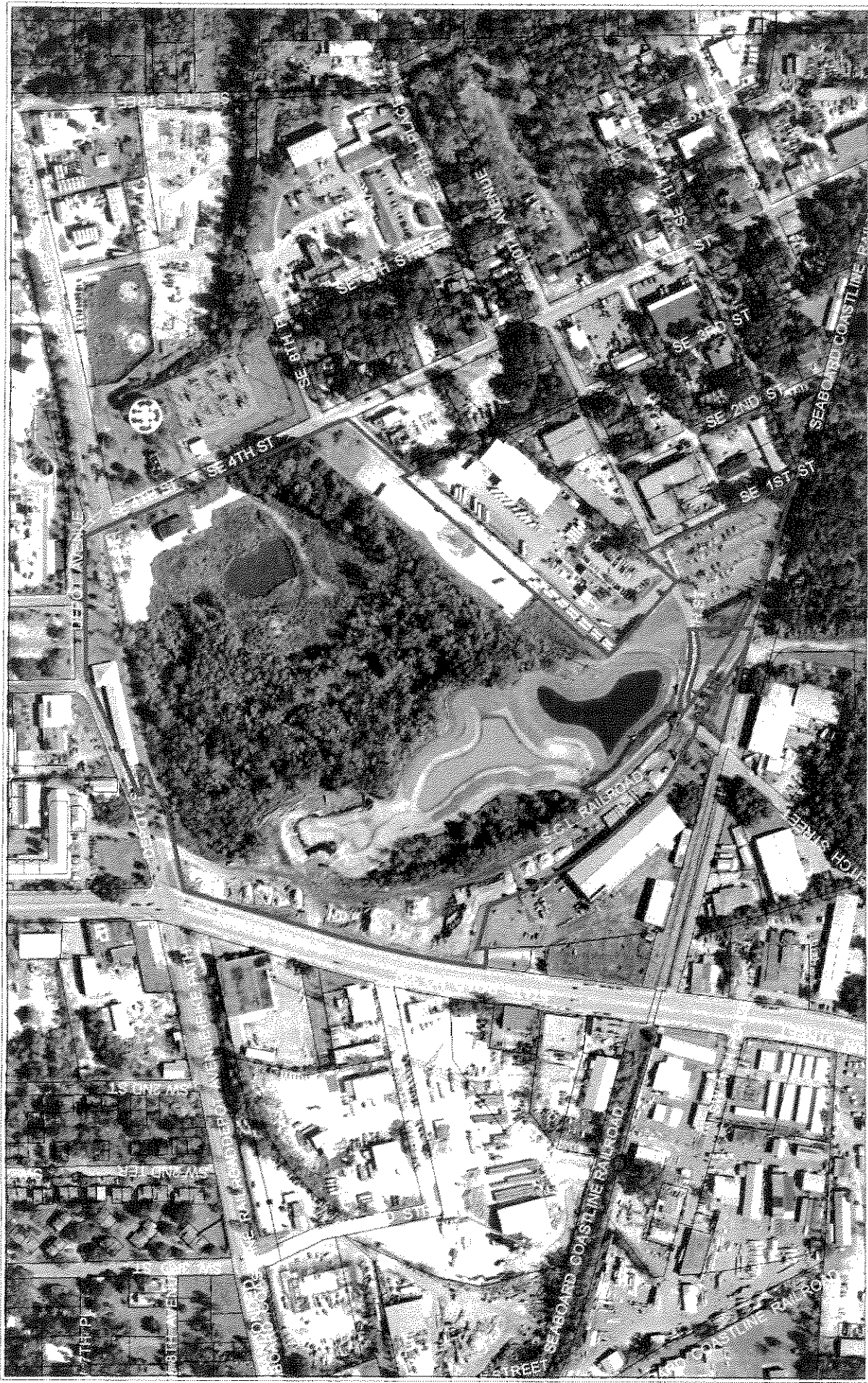



081040A



AERIAL PHOTOGRAPH

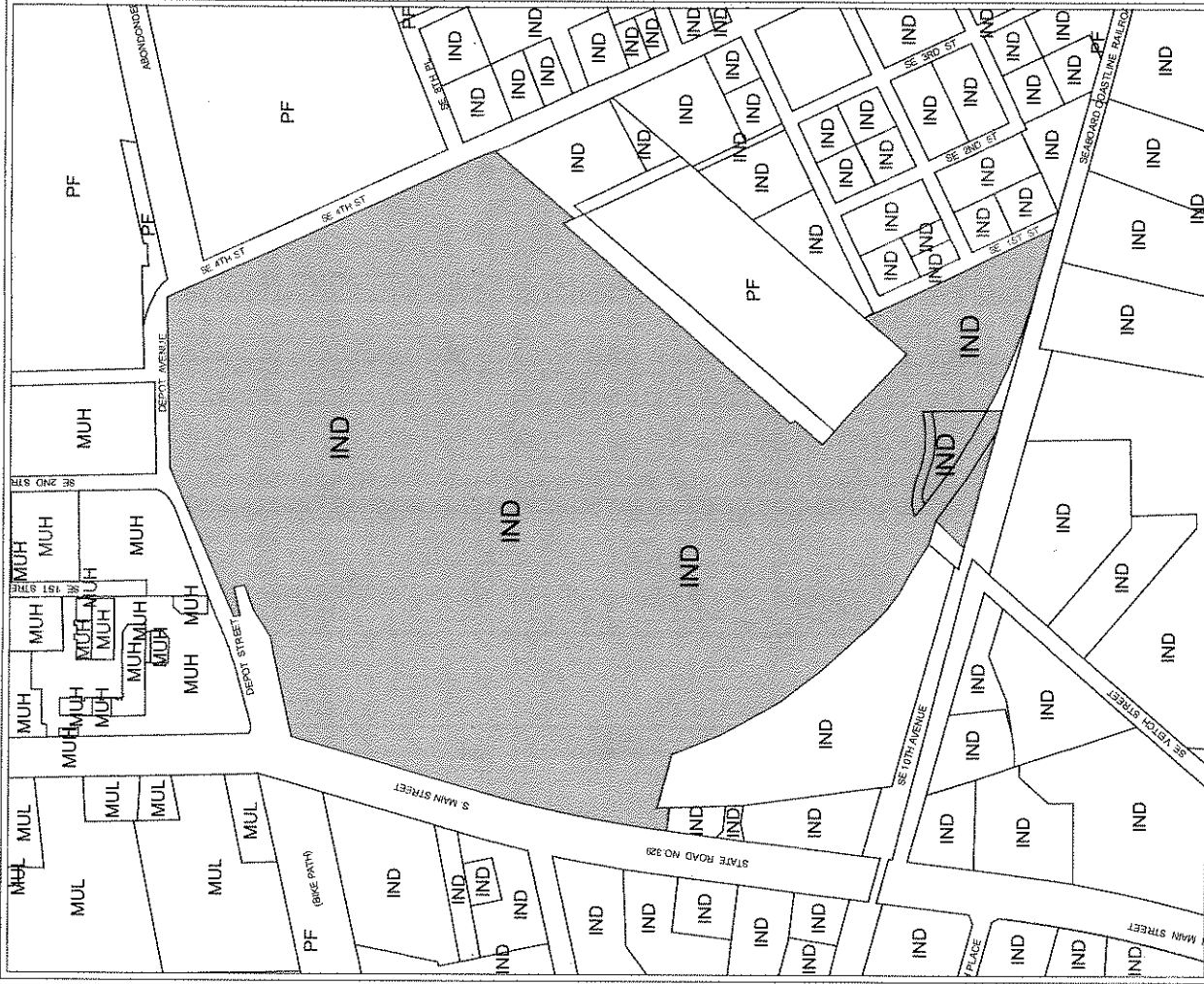
	<p>Name</p> <p>City of Gainesville, applicant</p>	<p>Petition Request</p> <p>Change Zoning Designation from I1 & I2 to PS (Public Services and Operations district)</p>	<p>Map(s)</p> <p>4152</p>	<p>Petition Number</p> <p>PZ-09-00037ZON</p>
---	--	--	----------------------------------	---

Land Use Designations

- SF Single Family (up to 8 du/acre)
- RL Residential Low Density (up to 12 du/acre)
- RM Residential Medium Density (8-30 du/acre)
- RH Residential High Density (8-100 du/acre)
- MUR Mixed Use Residential (up to 75 du/acre)
- MUL Mixed Use Low Intensity (8-30 du/acre)
- MUM Mixed Use Medium Intensity (12-30 du/acre)
- MUH Mixed Use High Intensity (up to 150 du/acre)
- UMU1 Urban Mixed Use 1 (up to 75 du/acre)
- UMU2 Urban Mixed Use 2 (up to 100 du/acre)
- O Office
- C Commercial
- IND Industrial
- E Education
- REC Recreation
- CON Conservation
- AGR Agriculture
- PF Public Facilities
- PUD Planned Use District

--- Division line between two land use districts
 — City Limits

Area under petition consideration

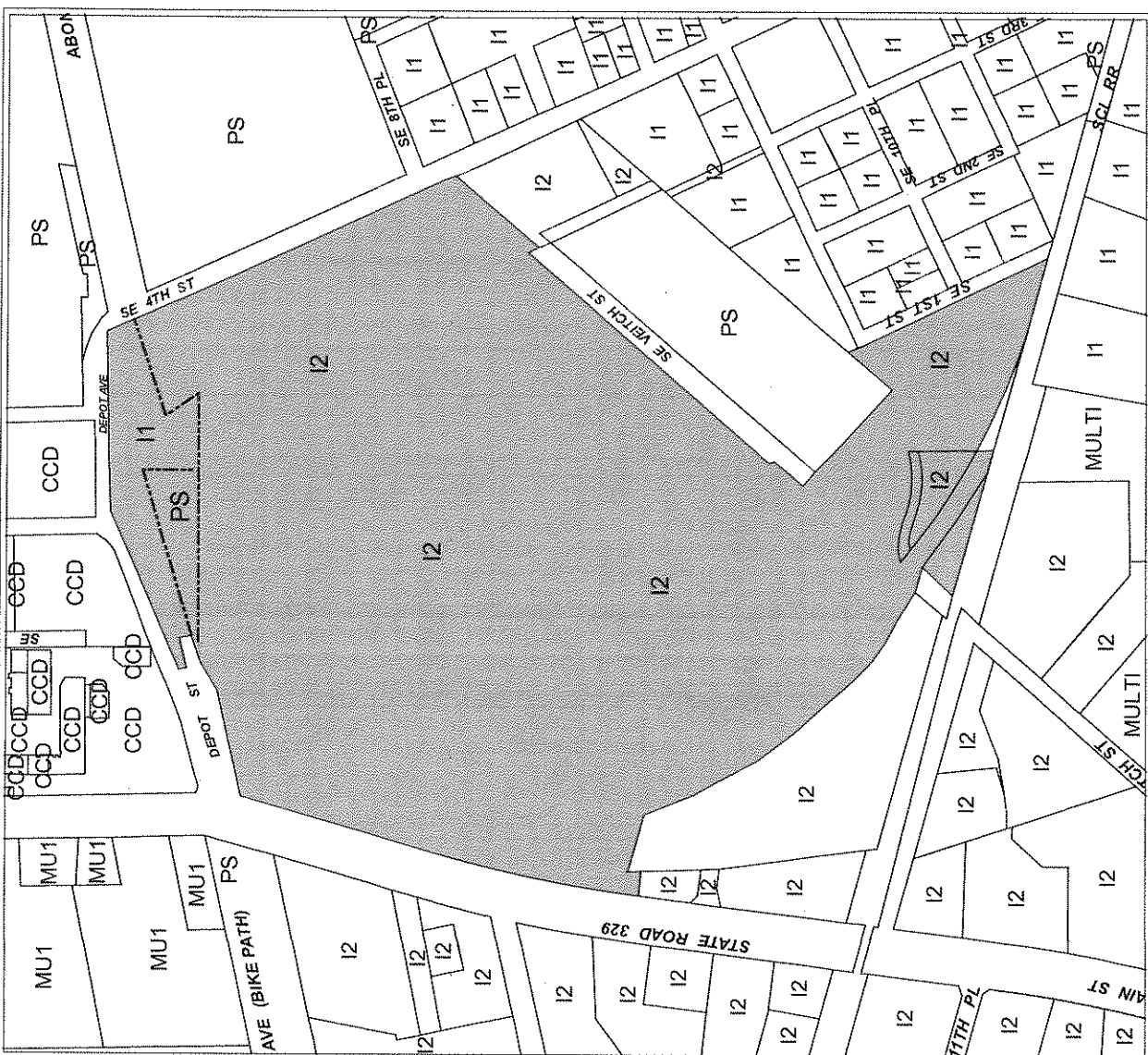


EXISTING LAND USE		Petition Request		Name	
Map(s)	Petition Number	Petition Request	Name	City of Gainesville, applicant	City of Gainesville, applicant
4152	PZ-09-00037ZON	Change Zoning Designation from I1& I2 to PS (Public Services and Operations district)	City of Gainesville, applicant	City of Gainesville, applicant	City of Gainesville, applicant



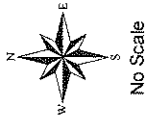
Zoning District Categories

- RSF1 Single-Family Residential (3.5 du/acre)
 - RSF2 Single-Family Residential (4.6 du/acre)
 - RSF3 Single-Family Residential (5.8 du/acre)
 - RSF4 Single-Family Residential (8 du/acre)
 - RSF5 Residential Low Density (12 du/acre)
 - RC Residential Conservation (12 du/acre)
 - MH Mobile Home Residential (12 du/acre)
 - RMF6 Multiple-Family Medium Density Residential (8-15 du/acre)
 - RMF7 Multiple-Family Medium Density Residential (8-21 du/acre)
 - RMF8 Multiple-Family Medium Density Residential (8-30 du/acre)
 - RMU Residential Mixed Use (up to 75 du/acre)
 - RH1 Residential High Density (8-43 du/acre)
 - RH2 Residential High Density (8-100 du/acre)
 - OR Office Residential (up to 20 du/acre)
 - OF General Office
 - PD Planned Development
 - BUS General Business
 - BA Automotive-Oriented Business
 - BT Tourist-Oriented Business
 - MU1 Mixed Use Low Intensity (8-30 du/acre)
 - MU2 Mixed Use Medium Intensity (12-30 du/acre)
 - UMU1 Urban Mixed Use District 1 (up to 75 du/acre)
 - UMU2 Urban Mixed Use District 2 (up to 100 du/acre)
 - CCD Central City District
 - W Warehousing and Wholesaling
 - I1 Limited Industrial
 - I2 General Industrial
 - AGR Agriculture
 - CON Conservation
 - MD Medical Services
 - PS Public Services and Operations
 - AF Airport Facility
 - ED Educational Services
 - CP Corporate Park
- Historic Preservation/Conservation District
 Special Area Plan
 Division line between two zoning districts
 City Limits
- Area under petition consideration



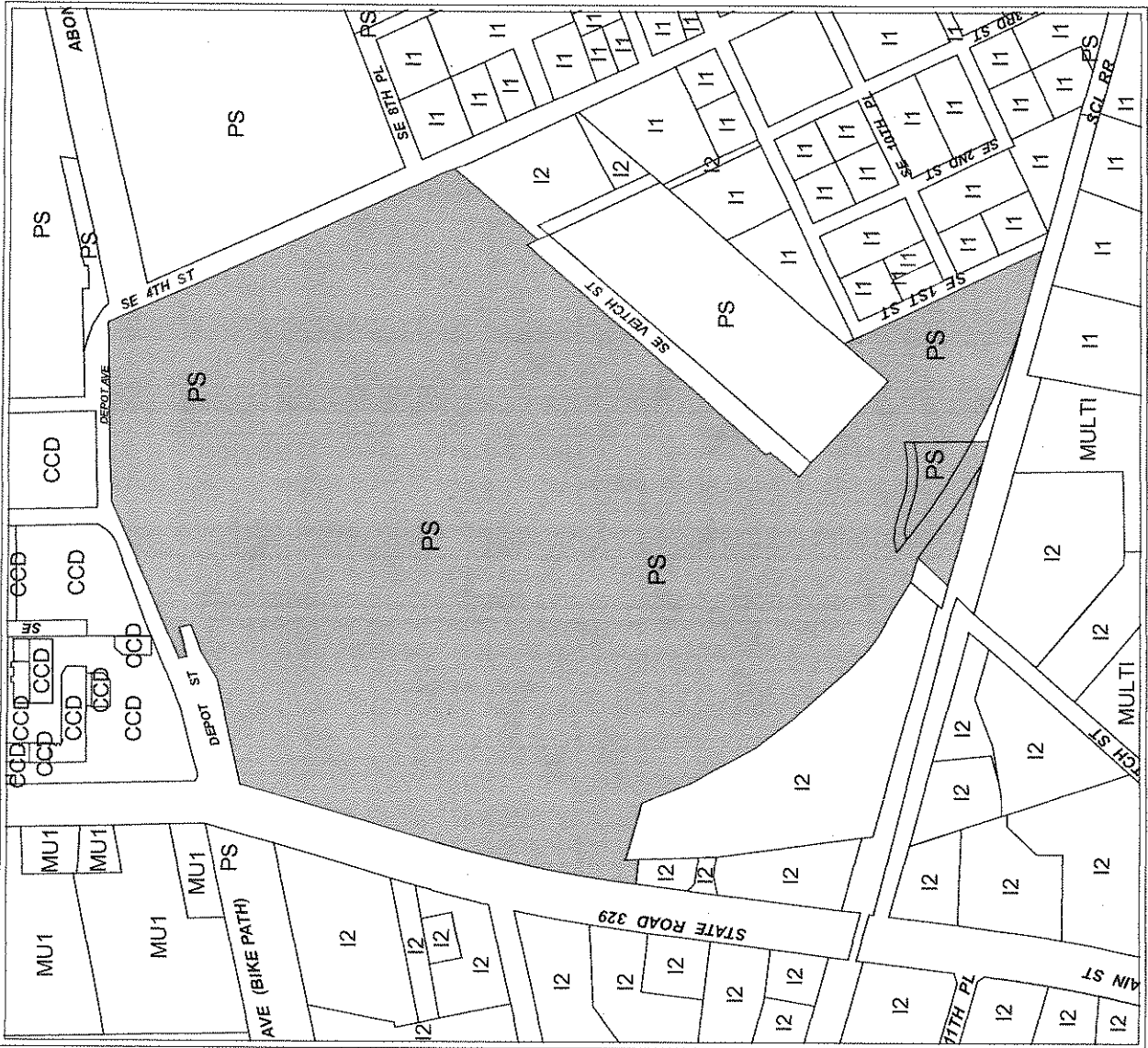
EXISTING ZONING

Name	Petition Request	Map(s)	Petition Number
City of Gainesville, applicant	Change Zoning Designation from I1 & I2 to PS (Public Services and Operations district)	4152	PZ-09-00037ZON



Zoning District Categories

- RSF1 Single-Family Residential (3.5 du/acre)
 - RSF2 Single-Family Residential (4.6 du/acre)
 - RSF3 Single-Family Residential (5.8 du/acre)
 - RSF4 Single-Family Residential (8 du/acre)
 - RMF5 Residential Low Density (12 du/acre)
 - RC Residential Conservation (12 du/acre)
 - MH Mobile Home Residential (12 du/acre)
 - RMF6 Multiple-Family Medium Density Residential (8-15 du/acre)
 - RMF7 Multiple-Family Medium Density Residential (8-21 du/acre)
 - RMF8 Multiple-Family Medium Density Residential (8-30 du/acre)
 - RMU Residential Mixed Use (up to 75 du/acre)
 - RH1 Residential High Density (8-43 du/acre)
 - RH2 Residential High Density (8-100 du/acre)
 - OR Office Residential (up to 20 du/acre)
 - OF General Office
 - PD Planned Development
 - BUS General Business
 - BA General Business
 - BT Tourist-Oriented Business
 - MU1 Mixed Use Low Intensity (8-30 du/acre)
 - MU2 Mixed Use Medium Intensity (12-30 du/acre)
 - UMU1 Urban Mixed Use District 1 (up to 75 du/acre)
 - UMU2 Urban Mixed Use District 2 (up to 100 du/acre)
 - CCD Central City District
 - W Warehousing and Wholesaling
 - I1 Limited Industrial
 - I2 General Industrial
 - AGR Agriculture
 - CON Conservation
 - MD Medical Services
 - PS Public Services and Operations
 - AF Airport Facility
 - ED Educational Services
 - CP Corporate Park
- Historic Preservation/Conservation District
 Special Area Plan
 Division line between two zoning districts
 City Limits
- Area under petition consideration



PROPOSED ZONING

Name	Petition Request	Map(s)	Petition Number
City of Gainesville, applicant	Change Zoning Designation from I1 & I2 to PS (Public Services and Operations district)	4152	PZ-09-00037ZON

