



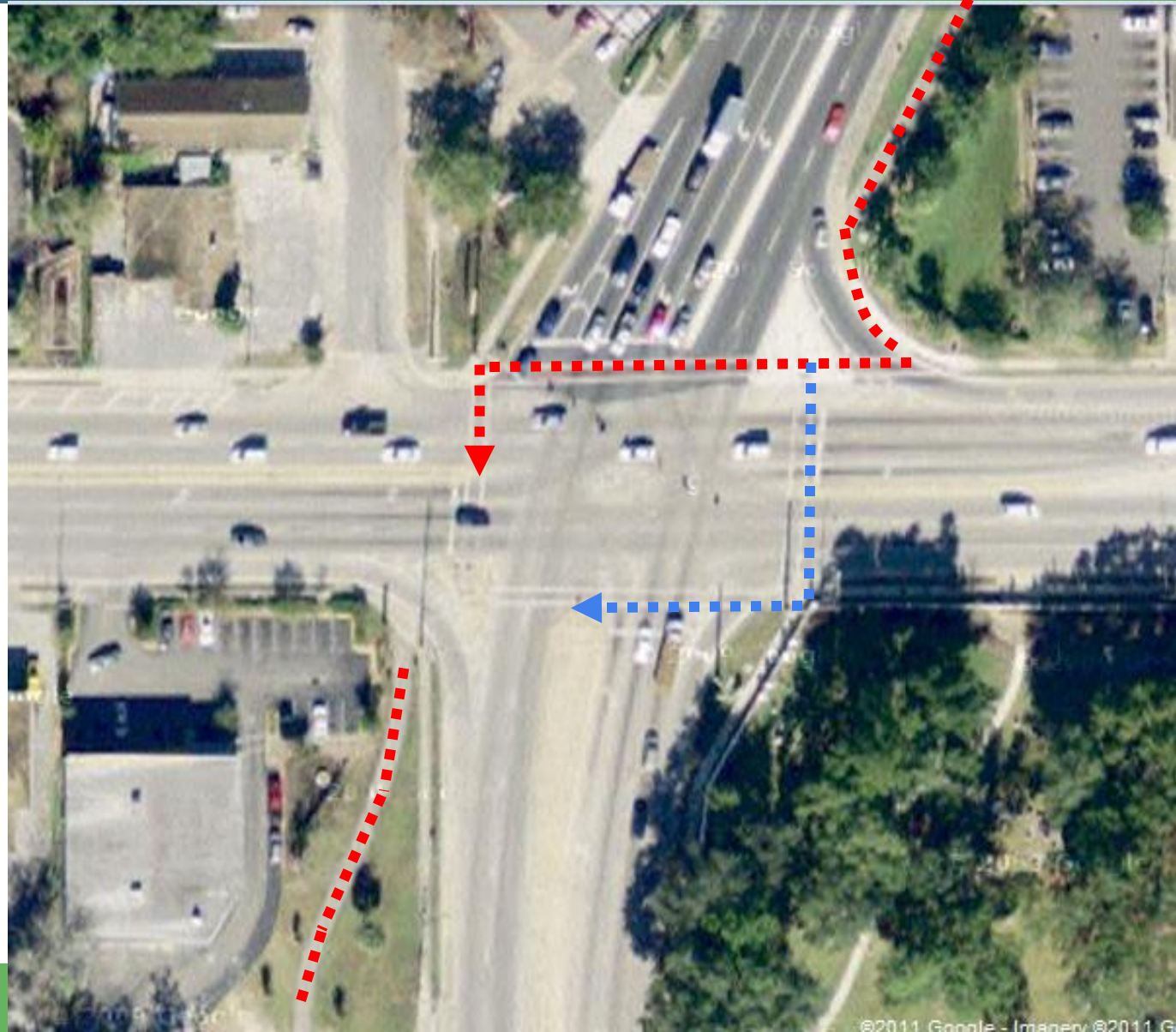
## Public Works Department

# Trail Crossing at East University Avenue & Waldo Road

Recreation, Cultural Affairs &  
Public Works Committee  
February 24, 2011

# Existing Conditions

- Major corridors
- High traffic volume
- Heavy truck traffic
- Crossing of multiple approaches required



# Existing Conditions

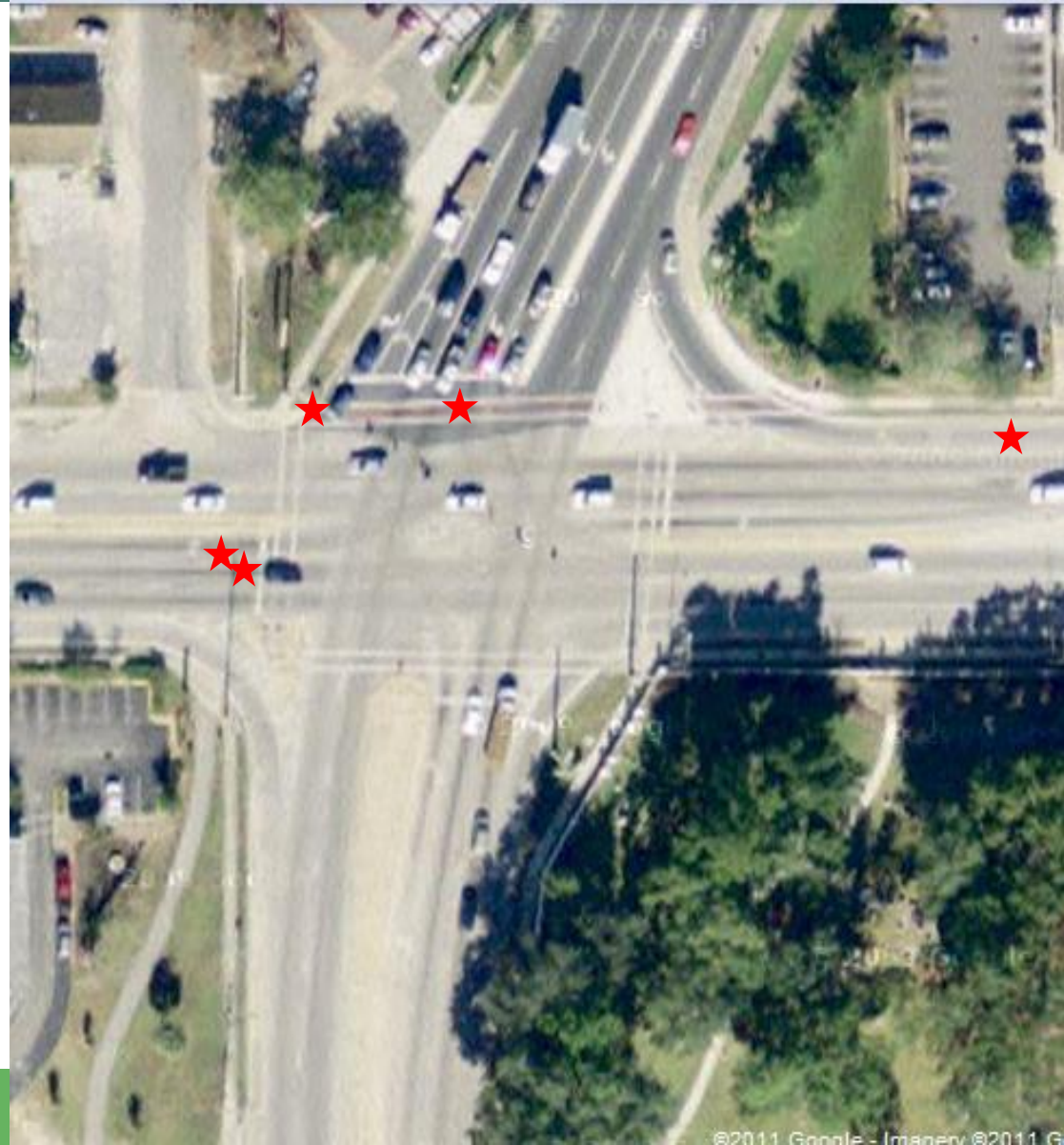


*E University Ave at Waldo Rd – westbound view*

# Crashes

Between 01/01/05 to 02/15/11

- Total: **5** crashes
- 1 involving a pedestrian
- 4 involving cyclists
- 4 resulted in injuries
- All resulted from improper crossings



# Actions to Date

- FDOT studied the intersection in October 2005 – modifications are documented in subsequent evaluation dated September 2009:
  - Pedestrian signal timings were adjusted and signals were replaced with countdown signal heads
  - Visibility of crossings and ADA compliance issues were addressed as part of resurfacing projects (08;10)
  - Sight distances were improved and pedestrian crosswalk in NE quadrant was relocated
  - Signs were relocated
  - Further study needed to determine impacts/feasibility of signalization of northbound right-turn

# Actions to Date

- BPAB recommendations (*May 2010*)
  - Modify path to cross at SE 2<sup>nd</sup> Ave
  - Pedestrian bridge
  - Enhance visibility of existing crossing
  - Add exclusive pedestrian phase  
(<http://www.youtube.com/watch?v=lwNJYtmlyqw>)
  - Realign path to cross at E 10<sup>th</sup> St

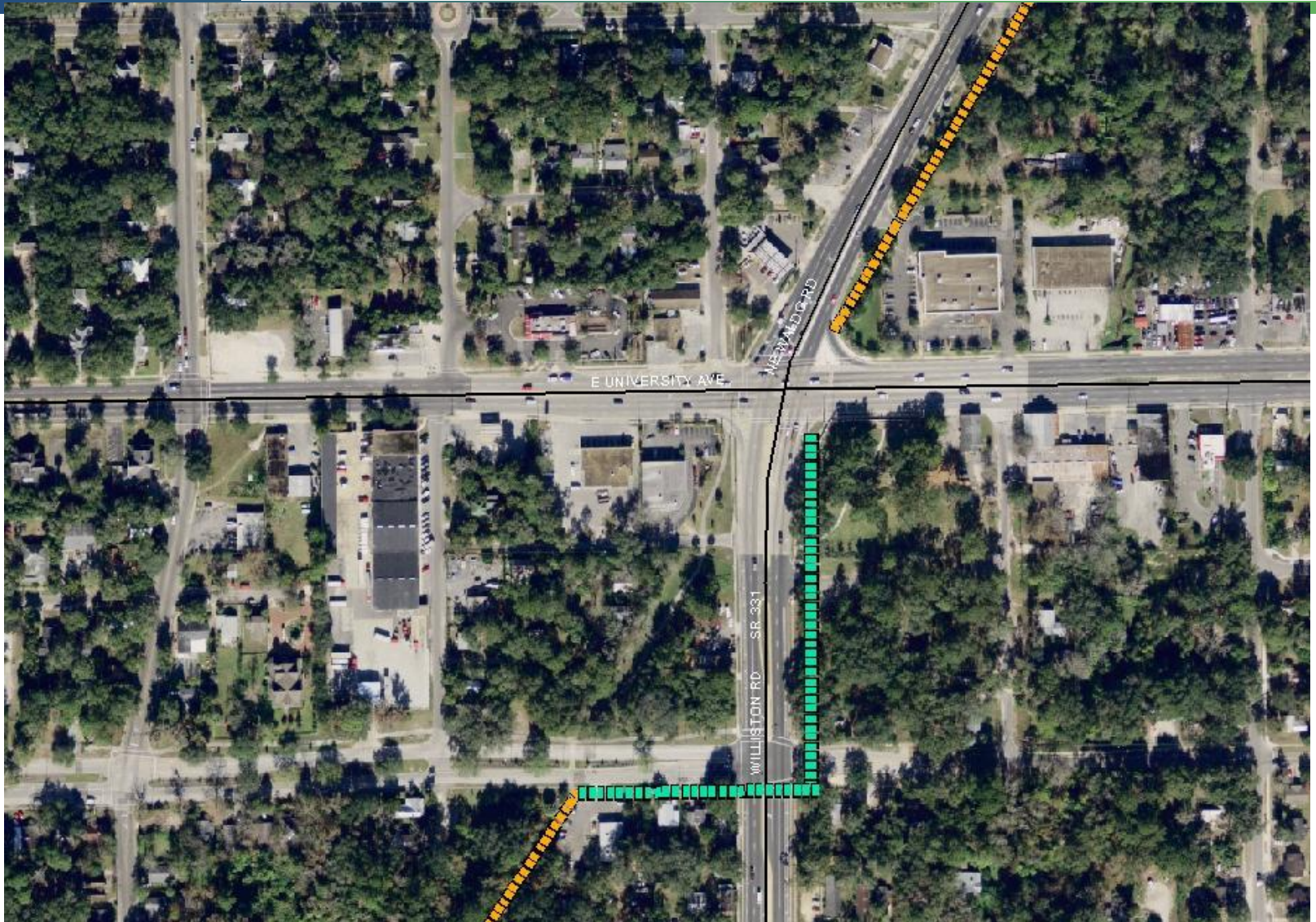
# Actions to Date

- MTPO contracted with the UF Dept. of Landscape Architecture to evaluate connectivity along the Waldo Rd corridor
  - Presentations to BPAB and CTST on *Jan/Feb 2011*
  - Recommended trail reroute at Citizen's Field crossing for southbound users; reroute to SE 2<sup>nd</sup> Ave for northbound users
- CTST recommendation (*February 2011*)
  - Modify to cross at SE 2<sup>nd</sup> Ave to NE 15<sup>th</sup> St



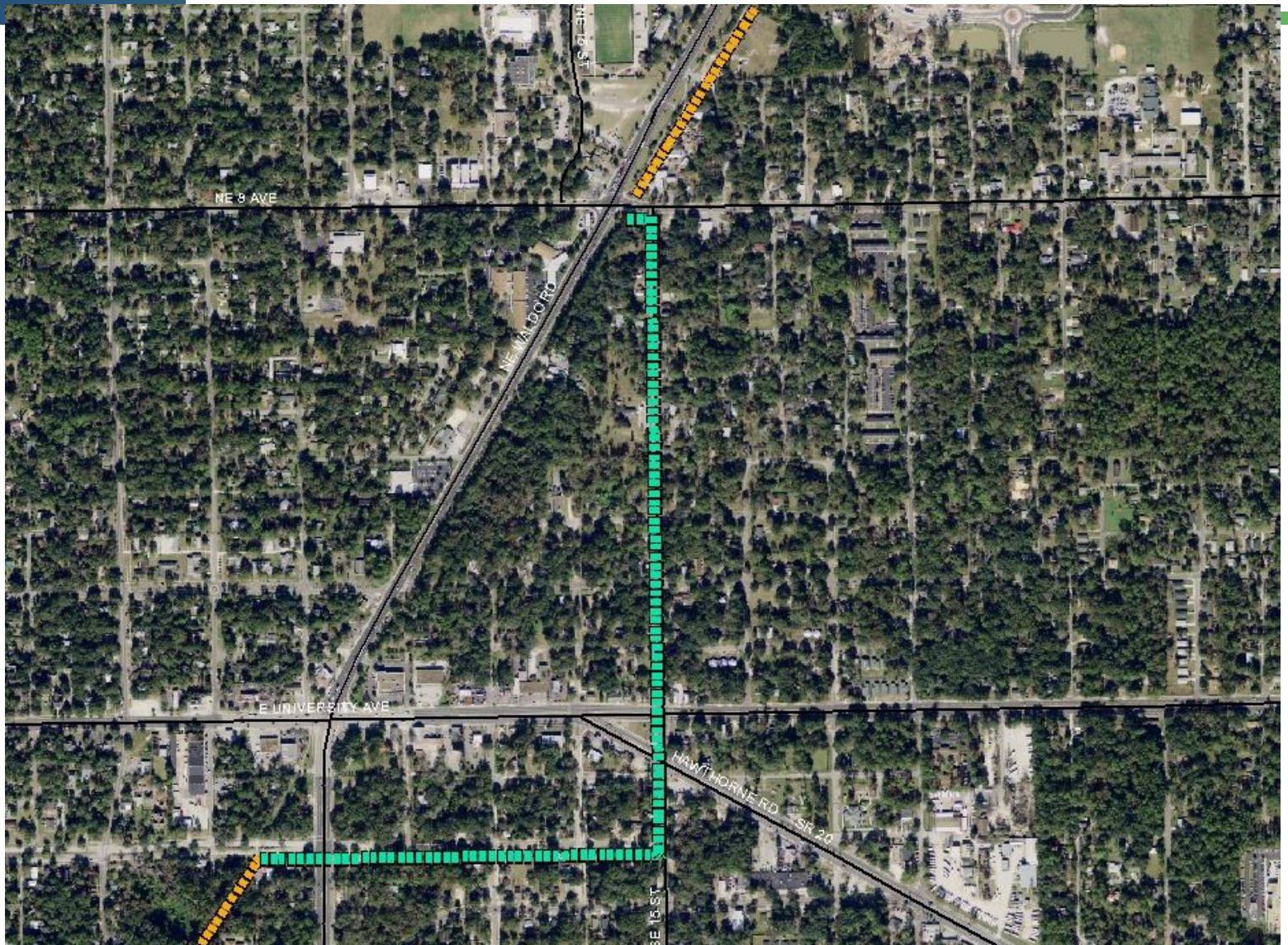


# Case 2: cross at SE 2 Ave



*SE 2<sup>nd</sup> Ave is signalized at Waldo Rd*

# Case 3: cross at SE 2 Ave to E 15 St



*Signage plan to direct users; most experienced may prefer current direct route*

# Recommendations

- Select alternative(s) for further evaluation
- Direct staff to study:
  - operational impacts and safety
  - feasibility of implementation and costs