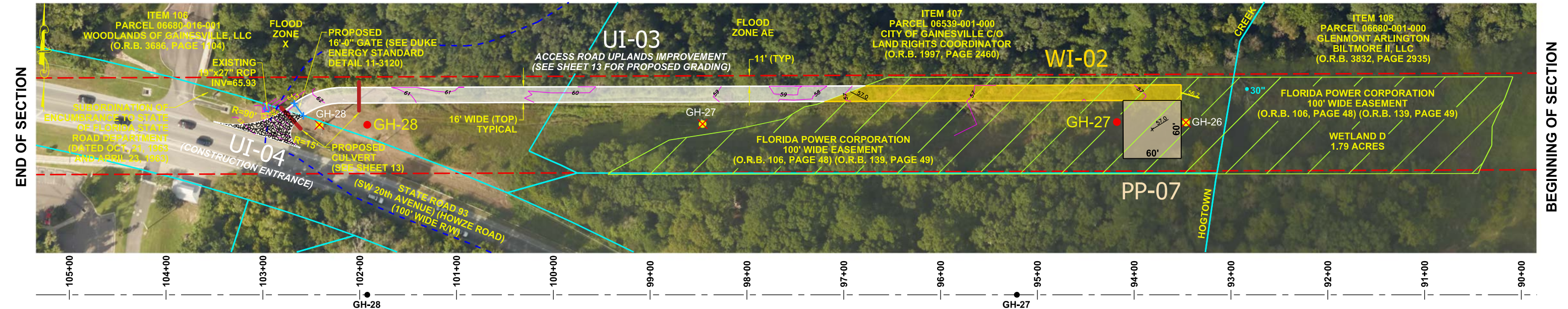


STRUCTURES GH-24 & GH-25

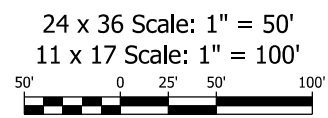


STRUCTURES GH-27 & GH-28

- NOTES:**
1. WETLAND DELINEATION PERFORMED BY FLATWOODS CONSULTING GROUP, INC. IN JANUARY, 2015.
 2. FOR WETLAND IMPROVEMENTS FOR AT-GRADE ROADS SEE SHEET 14.
 3. FOR UPLAND IMPROVEMENTS FOR AT-GRADE ROADS SEE SHEET 14.
 4. FOR CONSTRUCTION ENTRANCE IMPROVEMENTS SEE SHEET 14.
 5. FOR CABLE CONCRETE INSTALLATION DETAIL SEE SHEET 14.

LEGEND

GH-21	TRANSMISSION POLE TO BE INSTALLED	WI-01	AT-GRADE ACCESS ROAD WETLANDS IMPROVEMENT	CRUSHED ROCK
GH-21	TRANSMISSION POLE TO BE REMOVED	UI-01	AT-GRADE ACCESS ROAD UPLANDS IMPROVEMENT	33"
	WETLANDS AREA	PP-01	TEMPORARY MATTING	PROPOSED GRADE
	DUKE ENERGY FLORIDA EASEMENT	PP-01	AT-GRADE POLE PAD WETLANDS IMPROVEMENT	EXISTING GRADE (1 FT CONTOURS)
	ACCESS ROUTE		LOW WATER CROSSING (CABLE CONCRETE)	
	PROPOSED GATE AND/OR FENCE			



REV	DATE	DESCRIPTION	BY	CKD	APP
1	02/01/16	OMITTED PP-06	JJB	TJB	TJB
0	11/18/15	ISSUED FOR PERMIT	JJB	TJB	TJB

TRANSMISSION ENGINEERING DEPARTMENT

GE ALACHUA - HULL ROAD 69kV LINE
 PROPOSED REBUILD OF EXISTING 69kV TRANSMISSION LINE FROM HULL ROAD SUBSTATION TO GE ALACHUA SUBSTATION

SCALE: 1" = 100"
 DRAWN BY: JJB
 ENGINEER: TJB
 COUNTY: ALACHUA
 SHEET 3 OF 14

DATE: 07/10/15
 CHECKED BY: TJB
 SECTION: N/A
 FILE NAME: (GH-4000) ACCESS RD.

GH4000