

Appendix B Supplemental Documents

Exhibit B-1 Existing Land Use Map

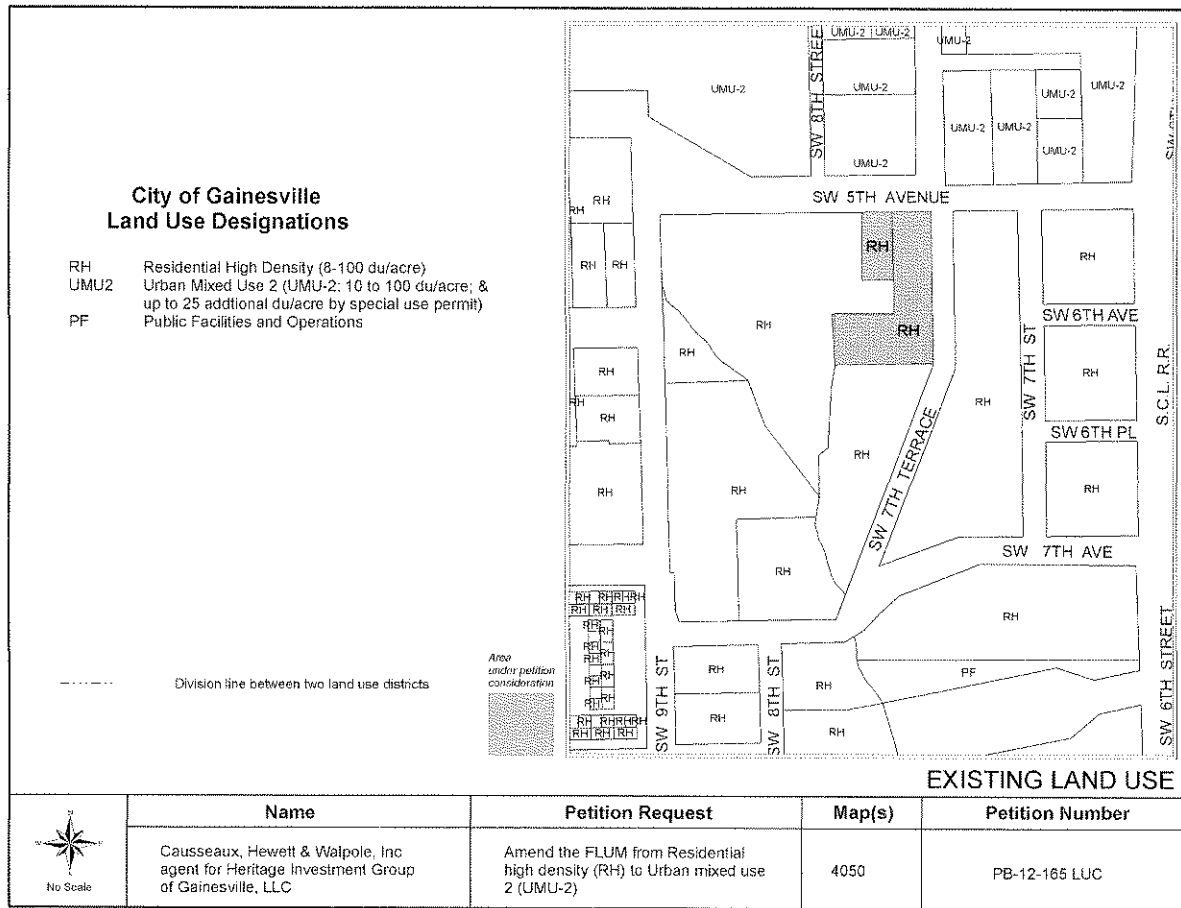


Exhibit B-2 Proposed Land Use Map

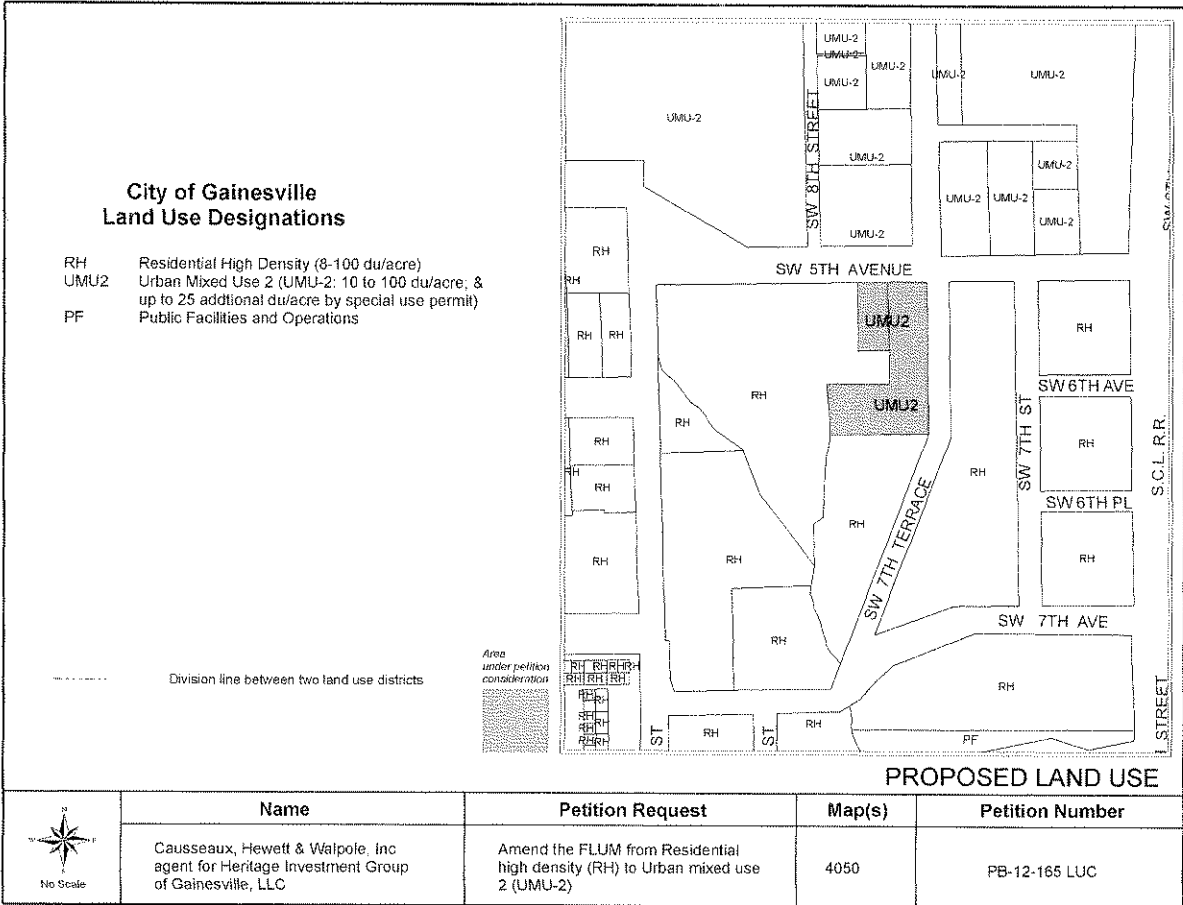
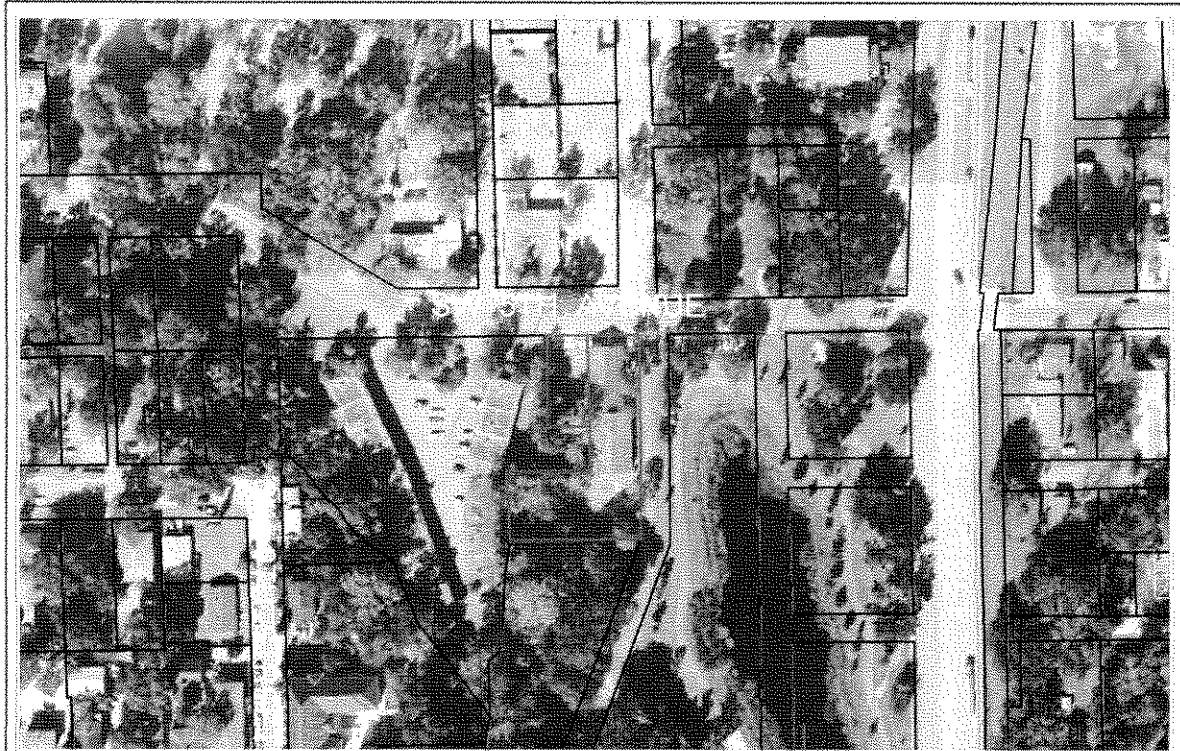



Exhibit B-3 Aerial Map



AERIAL PHOTOGRAPH

	Name	Petition Request	Map(s)	Petition Number
 No Scale	Causseaux, Hewett & Walpole, Inc agent for Heritage Investments Group of Gainesville, LLC	Amend the FLUM from Residential high density (RH) to Urban mixed use 2 (UMU-2)	4050	PB-12-165 LUC