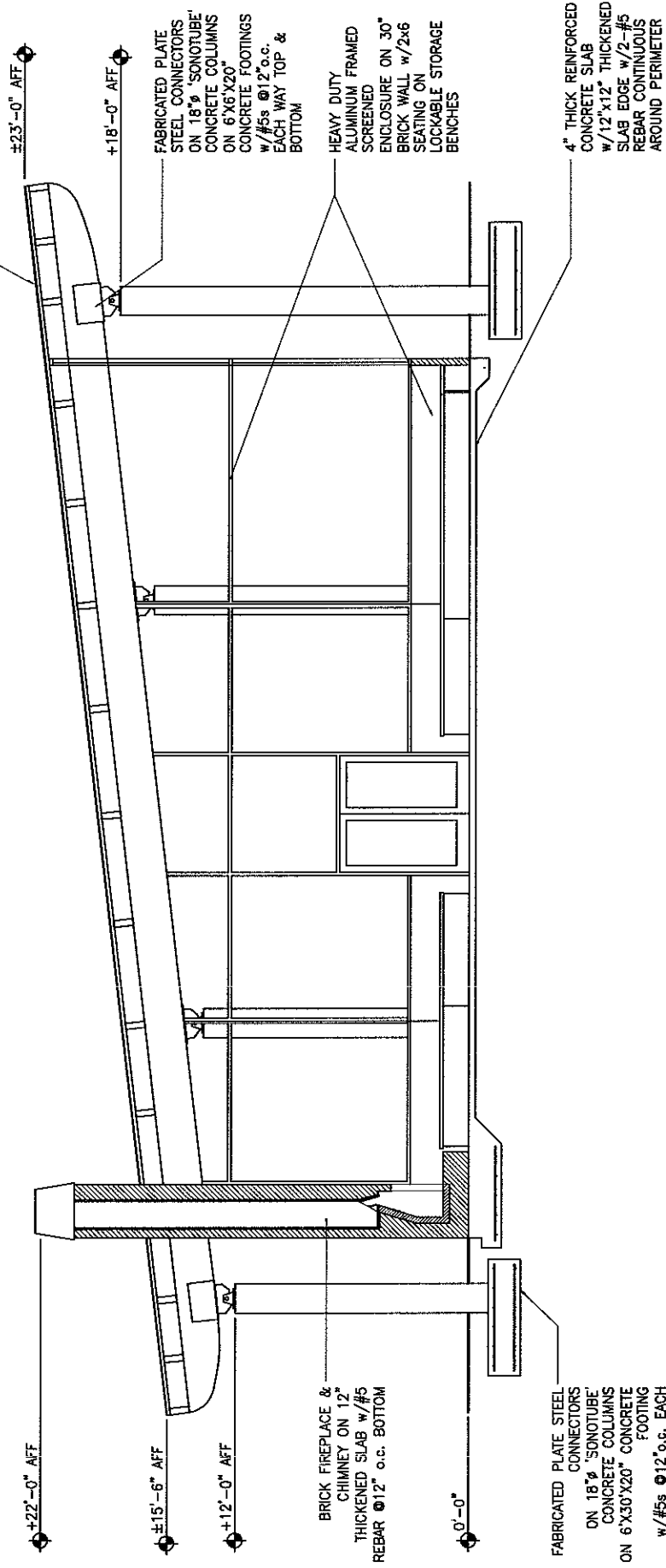


060322B

5V CRIMP METAL
ROOF ON 30"
BUILDING PAPER
ON 2x6 DECKING
ON 4x12 JOISTS
ON 6-3/4"x24"
GLULAM BEAMS

ADDITIVE ALTERNATE #1:
ROOF MOUNTED SOLAR
PANELS CONNECTED TO
HYDRONIC HEATING IN SLABS



+22'-0" AFF

+15'-6" AFF

+12'-0" AFF

BRICK FIREPLACE &
CHIMNEY ON 12"
THICKENED SLAB w/#5
REBAR @12" o.c. BOTTOM

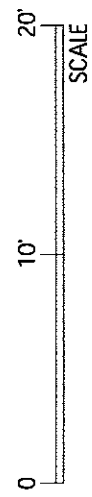
0'-0"

FABRICATED PLATE STEEL
CONNECTORS
ON 18"Ø "SONOTUBE"
CONCRETE COLUMNS
ON 6"x30"x20" CONCRETE
FOOTING
w/#5s @12"o.c. EACH
WAY TOP & BOTTOM

FABRICATED PLATE
STEEL CONNECTORS
ON 18"Ø "SONOTUBE"
CONCRETE COLUMNS
ON 6"x6"x20"
CONCRETE FOOTINGS
w/#5s @12"o.c.
EACH WAY TOP &
BOTTOM

HEAVY DUTY
ALUMINUM FRAMED
SCREENED
ENCLOSURE ON 30"
BRICK WALL w/2x6
SEATING ON
LOCKABLE STORAGE
BENCHES

4" THICK REINFORCED
CONCRETE SLAB
w/12"x12" THICKENED
SLAB EDGE w/2-#5
REBAR CONTINUOUS
AROUND PERIMETER



SCALE

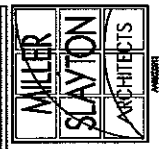
PROPOSED PAVILION SECTION

CITY OF GAINESVILLE PAVILION

Gainesville, Florida

ARCHITECT PROJECT : 05-026

SUPPLEMENTAL DRAWING #2



8.07.07