

Petition PB-17-13TCH

Sexual Offender Treatment Center

Legistar No. 160769

City Commission Meeting: 7/06/17

Presentation by Ralph Hilliard



DEPT
OF
DOING

Purpose of the Petition

- Determine new City regulations for social service type facilities, specifically Sexual Offender Treatment
- Determine where these facilities should be located

Key Discussion Points

- Definitions for sexual offender treatment and other treatment facilities;
- Appropriate locations;
- Separation of uses; and
- Extent of treatment services.

Existing Code Provisions

Table 1(Current Use)

	OR	OF	BUS	MU-1	MU-2	CCD	UMU-1	UMU-2	I-1	BI
Health Services	P	P	P	P	P	P	P	P	N A	P
Social Services	NA	NA	P	P	P	P	P	P	S	
Rehabilitation Center	S	S	S	S	S	S	NA	P	S	P
Social Service Home	S	S	NA	S	S	S	NA	NA	N A	

P- Permitted
 S- Special Use Permit
 NA- Not Allowed

Existing Use Designations

- Health Services (Health/Medical Professionals)
 - Social Services (Counseling and Social Workers)
 - Rehabilitation Center (Intense Professional Care)*
 - Social Service Home and Halfway house (Residential Care)
-
- * Only two permits issued (UMU-2)

Proposed Code

- ~~Rehabilitation center means a facility providing professional care, nonresident only, for those requiring therapy, counseling or other rehabilitative services related to drug abuse, alcohol abuse, social disorders, physical disabilities, mental retardation or similar problems.~~

Proposed Code

- Sexual offender treatment center means a facility that provides any out-patient sexual behavior therapy, counseling or similar rehabilitative services to individuals or groups that are either registered sexual offenders as defined in Section 943.0435, Florida Statutes, or registered sexual predators as defined in Section 775.21, Florida Statutes.

Proposed Code

- Social service home or halfway house means a facility ~~providing professional care, resident or nonresident, for those requiring therapy, counseling or other rehabilitative services related to drug abuse, alcohol abuse, social disorders, physical disabilities, mental retardation or similar problems.~~ that provides professional residential care for individuals or groups needing therapy, counseling or other rehabilitative services related to mental or physical disabilities, addictions, social disorders or similar issues, not including sexual offender treatment centers

Distance Separation Requirements

Table 3
Distance Separation Requirements (in feet)

	Sexual offender treatment centers, social service home or halfway house, food distribution centers and residence for destitute people	Children related facilities: Day care centers; schools; public park and youth associations	Residential Zoning Districts: RSF1-4, RC, RMF5-8, RH-1 and 2.
Sexual Offender treatment center	1320	1000	400
Social Service Home or Halfway House	1320	400	

All measurements in the table above shall be measured by a straight line from the nearest property line of any of the above listed facilities to the nearest property line of the proposed facility.

Alternative

- Treatment Facility means an out-patient facility that provides professional therapy, counseling or other rehabilitative services to individuals or groups for addictions (drugs, alcohol, food, sex, or similar disorders) behavioral disorders, intellectual disabilities and physical disabilities.
- Sexual offender treatment center means a facility that provides any out-patient sexual behavior therapy, counseling or similar rehabilitative services to individuals or groups that are either registered sexual offenders as defined in Section 943.0435, Florida Statutes, or registered sexual predators as defined in Section 775.21, Florida Statutes.

Alternative

Modify:

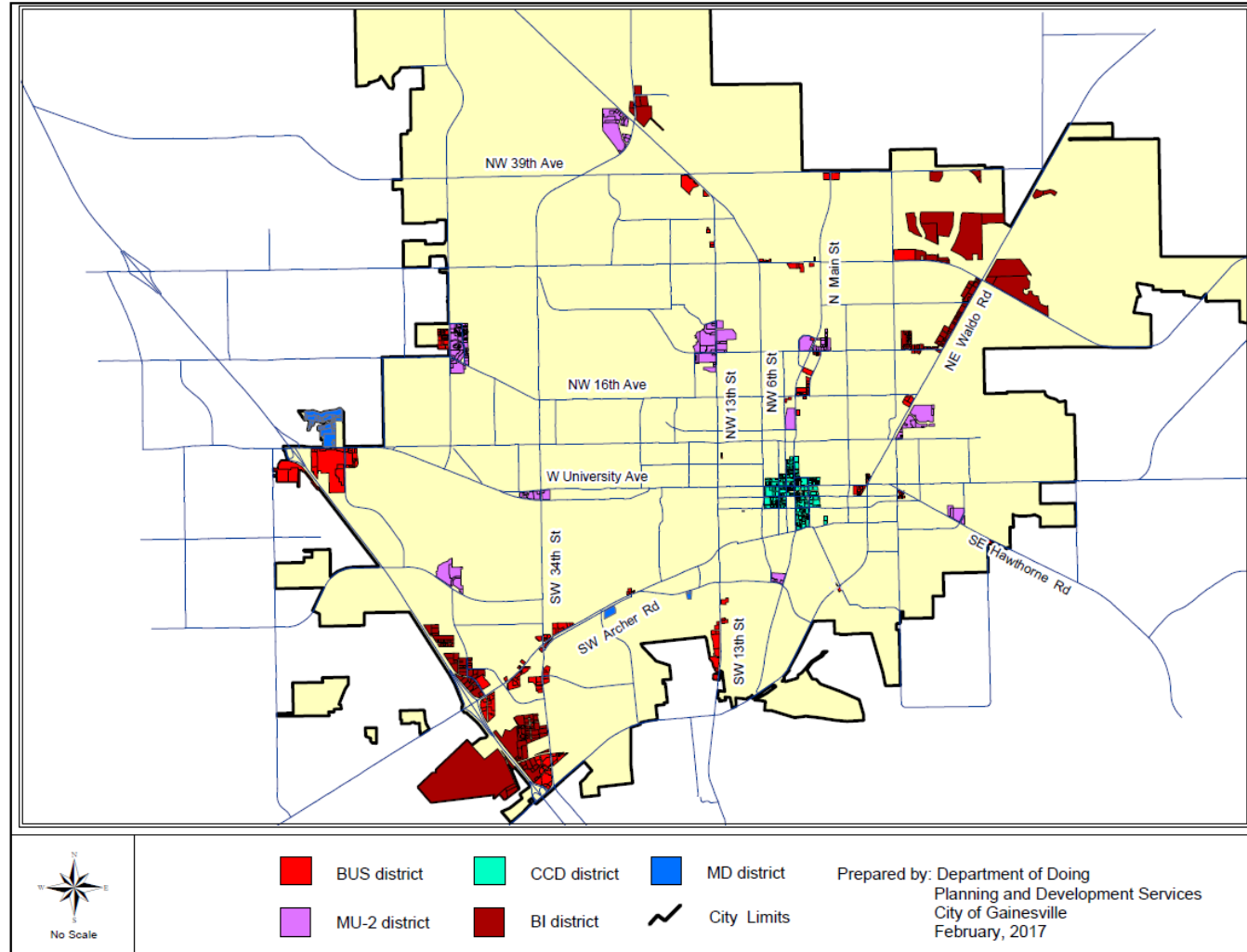
- Social service home or halfway house means a facility ~~providing professional care, resident or nonresident, for those requiring therapy, counseling or other rehabilitative services related to drug abuse, alcohol abuse, social disorders, physical disabilities, mental retardation or similar problems.~~ that provides professional residential care for individuals or groups needing therapy, counseling or other rehabilitative services related to mental or physical disabilities, addictions, social disorders or similar issues, not including sexual offender treatment centers

Use Districts

	OR	OF	BUS	MU-1	MU-2	CCD	UMU-1	UMU-2	BI	MD
Treatment Center	NA	P	P	P	P	P	P	P	P	P
Sexual Offender Treatment Center	NA	NA	S	NA	S	S	NA	NA	S	S
Social Service Home	S	S	NA	S	S	S	NA	NA	NA	P

Proposed Zoning Districts Map

Sexual Offender Treatment
Centers



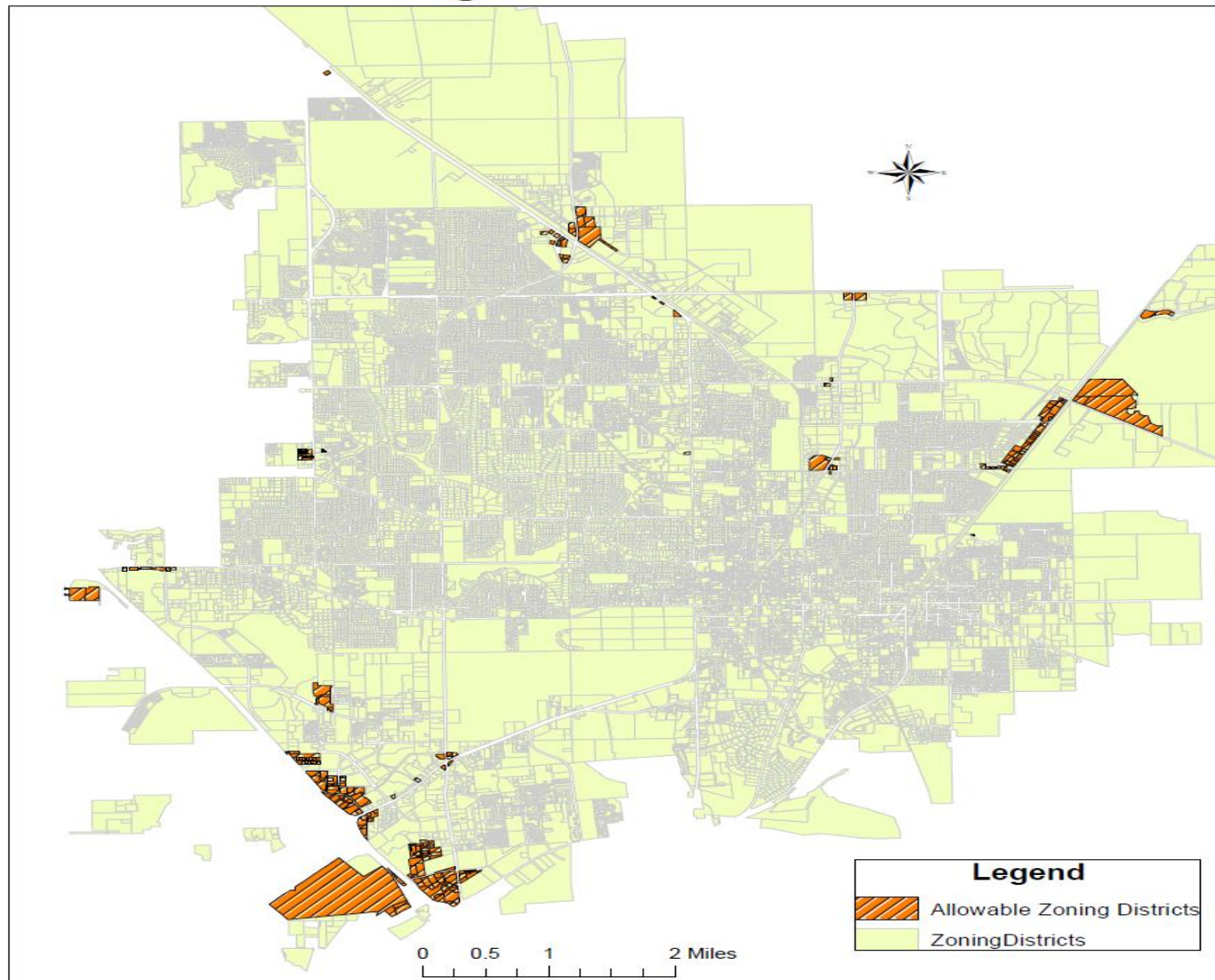
Separation Requirements

	Sexual offender treatment centers, social service home or halfway house, food distribution centers and residence for destitute people	Children related facilities: Day care centers; schools; public park and youth associations	Residential Zoning Districts: RSF1-4, RC, RMF5-8, RH-1 and 2.
Sexual Offender treatment center	1320	1000	400
Social Service Home or Halfway House	1320	400	
Treatment Center	1320		

Separation/ Buffer Map



Allowable Zoning Districts for Businesses Working with Sex Offenders



Conclusions

- The Sexual Offender Treatment Center definition specifically provides what service triggers its classification (out-patient sexual behavior therapy).
- The petition clearly states the target groups and individuals as registered sexual offenders and predators as defined by State Statute.
- The petition provides the location criteria for the use, and staff has demonstrated this by mapping the areas.
- The petition treats all facilities the same whether they are treating an individual or a group
- The petition does not limit where a sex offender can seek treatment for other issues (drugs, alcohol, mental health ...)

Staff Recommendation

- Approve staff's alternative recommendation.