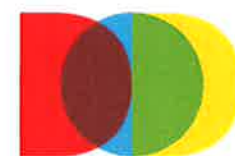


# Archer Road Voluntary Annexation



DEPT  
OF  
DOING

# Presentation

- Voluntary Annexation Petition
- Provision of Urban Services
- Land Use & Zoning
- Legal Requirements for Annexation
- Next Steps

Petition

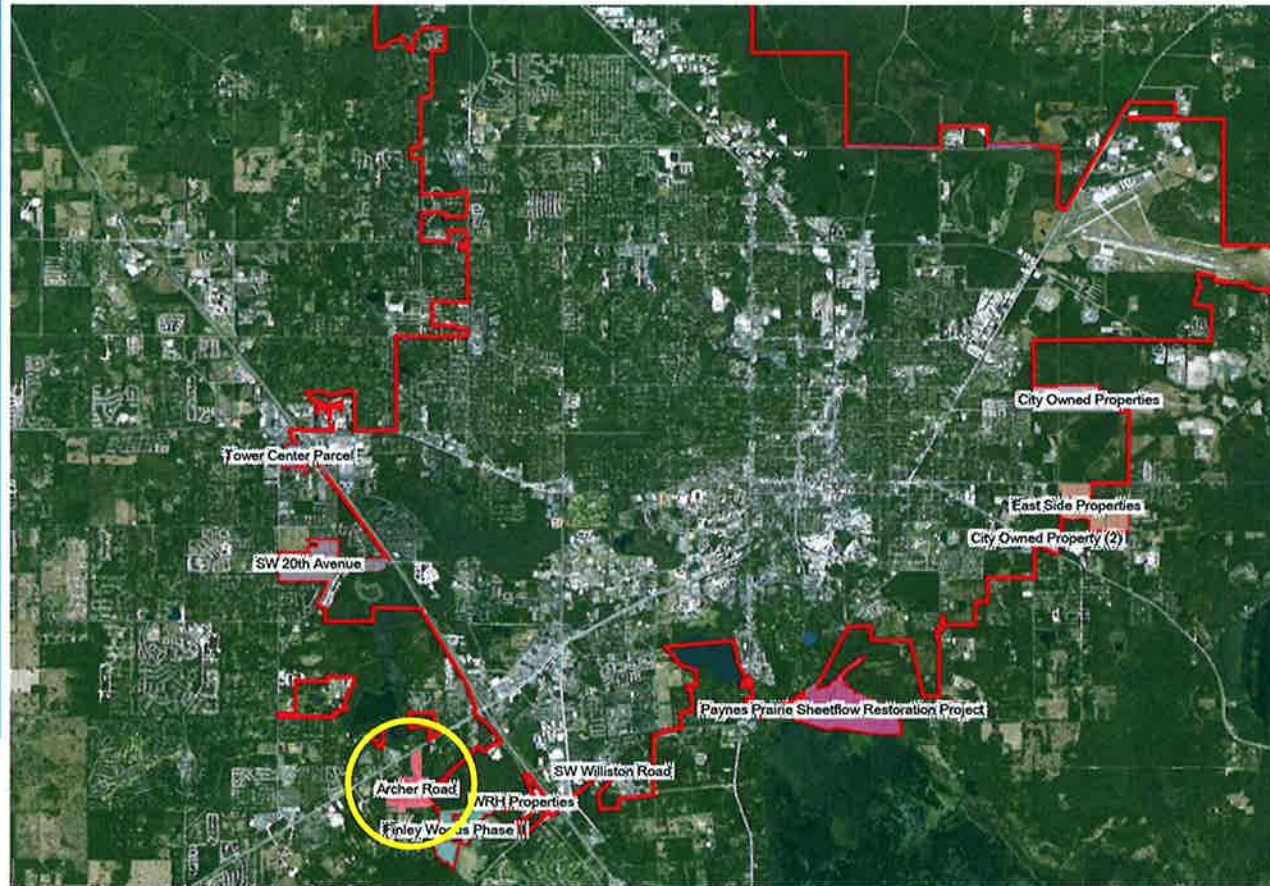
Services

Land Use

Legal

Schedule

# Petition for Voluntary Annexation



Petition

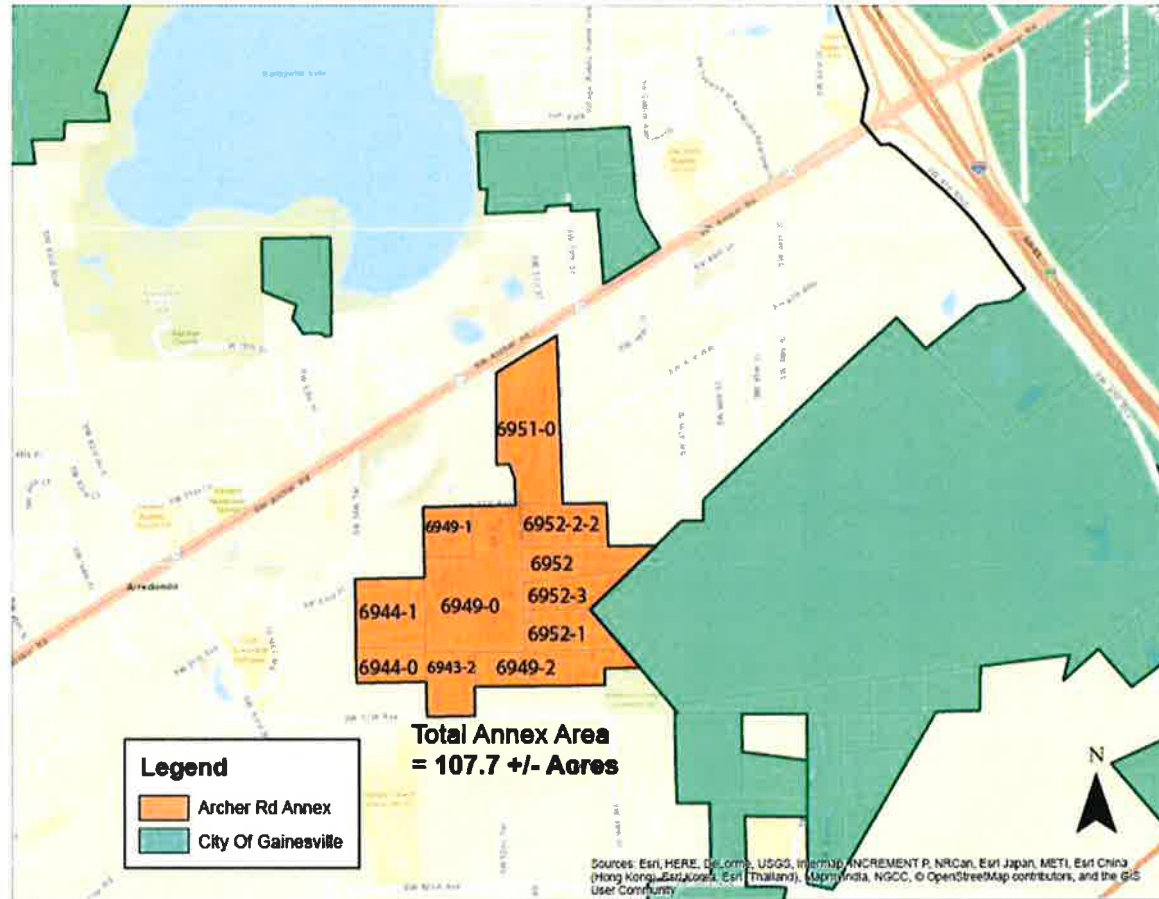
Services

Land Use

Legal

Schedule

# Petition for Voluntary Annexation



Petition

Services

Land Use

Legal

Schedule

# Petition for Voluntary Annexation



## 6A PETITION FOR VOLUNTARY ANNEXATION

TO: THE HONORABLE MAYOR AND MEMBERS OF THE CITY COMMISSION OF THE CITY OF GAINESVILLE, FLORIDA

FROM: Paul and Joan Florence (Petitioner)

OWNER 1) TAX PARCEL: 06913-002-000

DATE: November 02, 2016

I, Paul and Joan Florence, as  
OWNER (title) of the Parcel No. 06913-002-000

- 11 parcels representing the 11 different parcels



Petition

Services

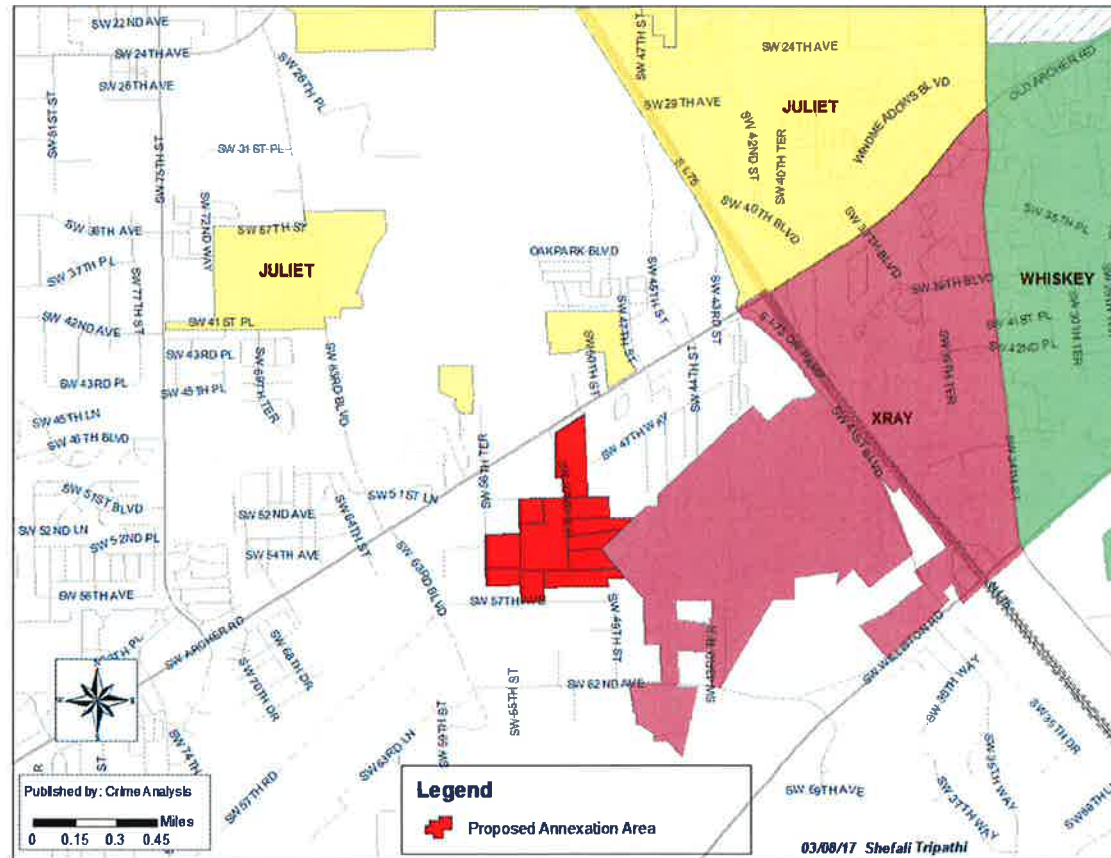
Land Use

Legal

Schedule

# Provision of Urban Services

Police



Petition

Services

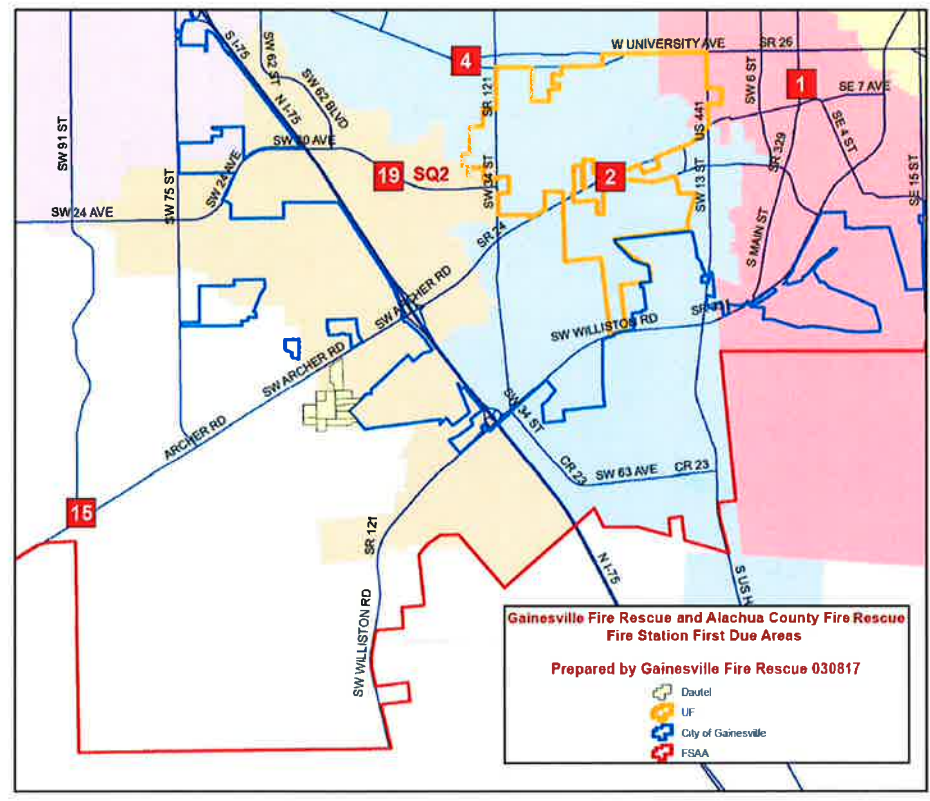
Land Use

Legal

Schedule

# Provision of Urban Services

Fire Rescue



Petition

Services

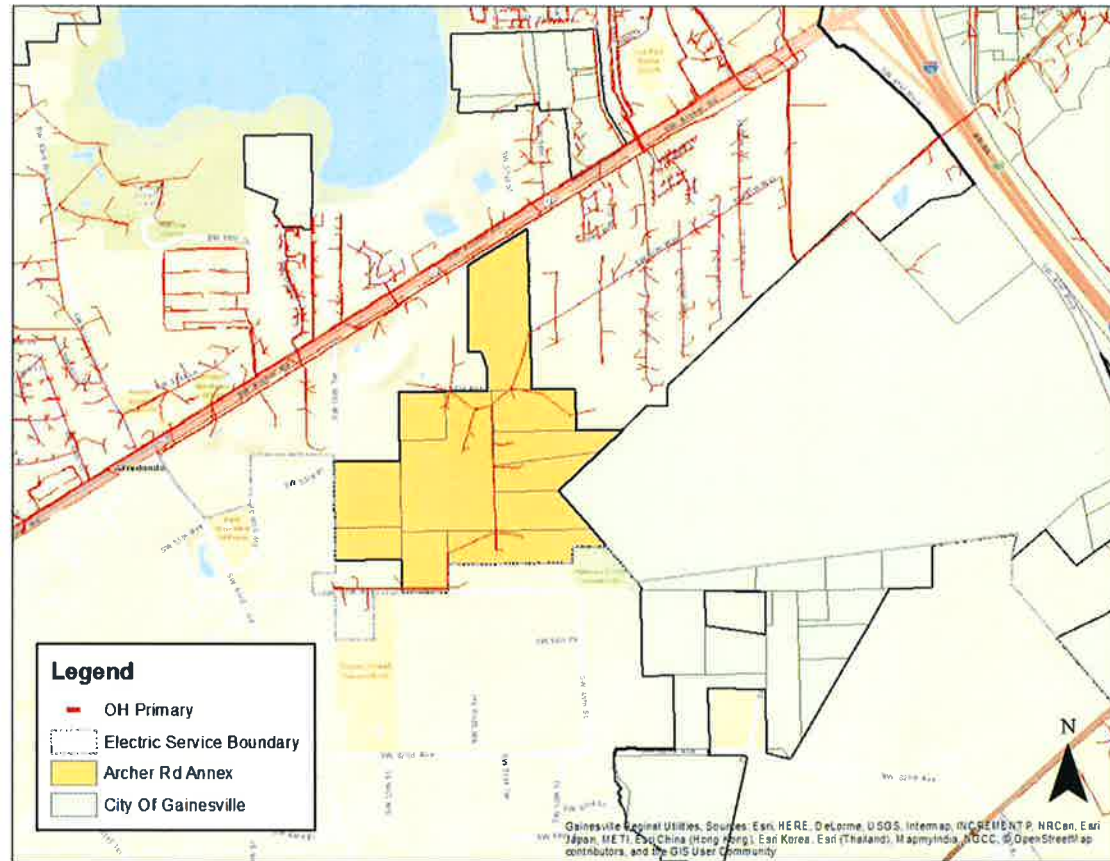
Land Use

Legal

Schedule

# Provision of Urban Services

GRU Electric





Petition

Services

Land Use

Legal

Schedule

# Provision of Urban Services

RTS Transit



Petition

Services

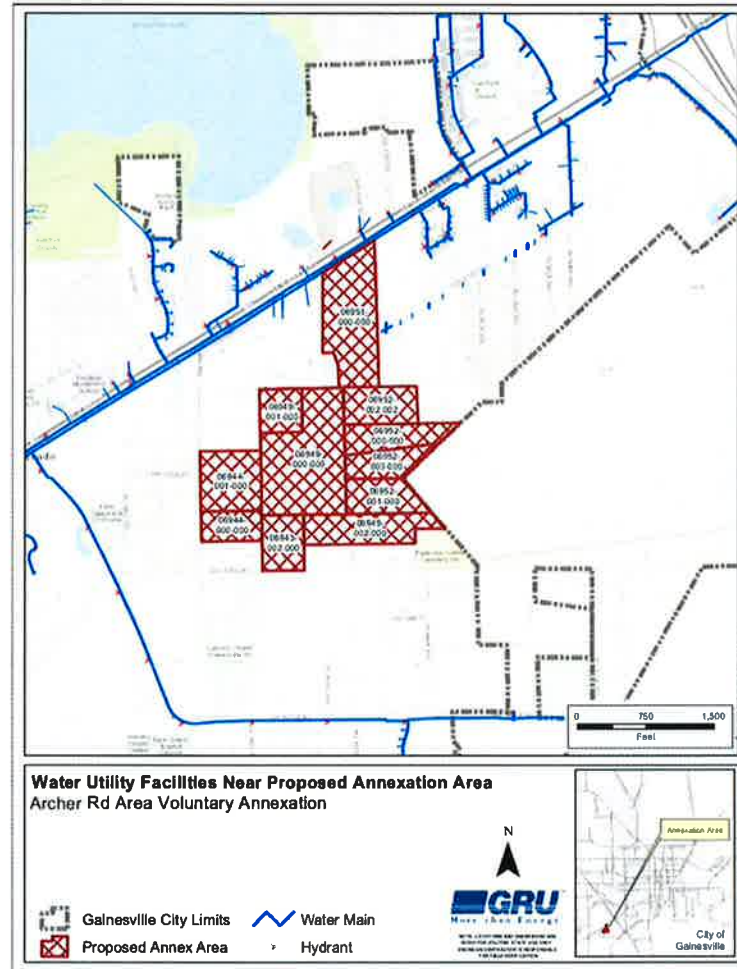
Land Use

Legal

Schedule

# Provision of Urban Services

GRU Water



Petition

Services

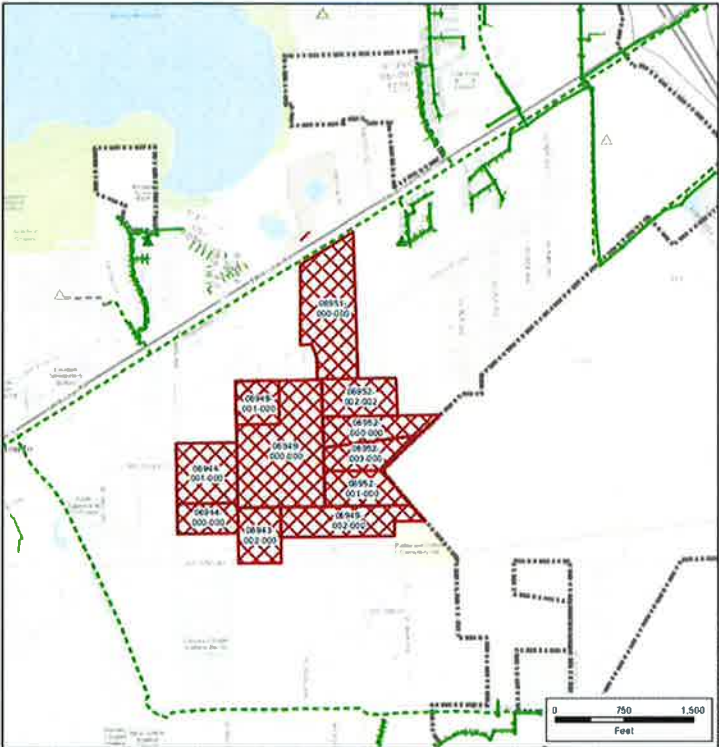
Land Use

Legal

Schedule

# Provision of Urban Services

GRU Wastewater



**Wastewater Utility Facilities Near Proposed Annexation Area**  
**Archer Rd Area Voluntary Annexation**

Gainesville City Limits	Private Lift Station
Proposed Annex Area	GRU Gravity Main
GRU Force Main	Private Gravity Main
Private Force Main	GRU Manhole
GRU Lift Station	Private Manhole

**GRU**  
GAINESVILLE REGIONAL  
WASTEWATER TREATMENT PLANT

© 2014 GRU. All rights reserved. This map is for informational purposes only. GRU does not warrant the accuracy of this map. GRU is not responsible for any errors or omissions on this map. GRU is not liable for any damages, including consequential damages, arising from the use of this map.

City of Gainesville



Petition

Services

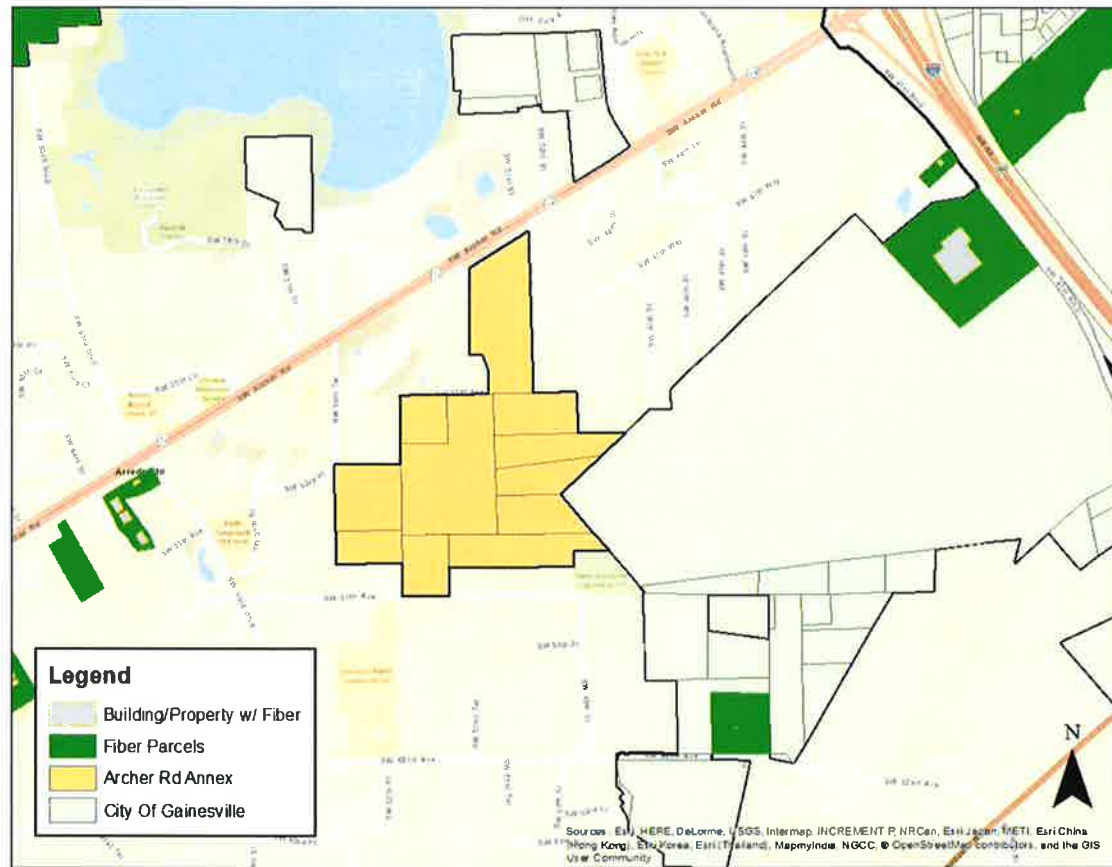
Land Use

Legal

Schedule

# Provision of Urban Services

GRUcom



Petition

Services

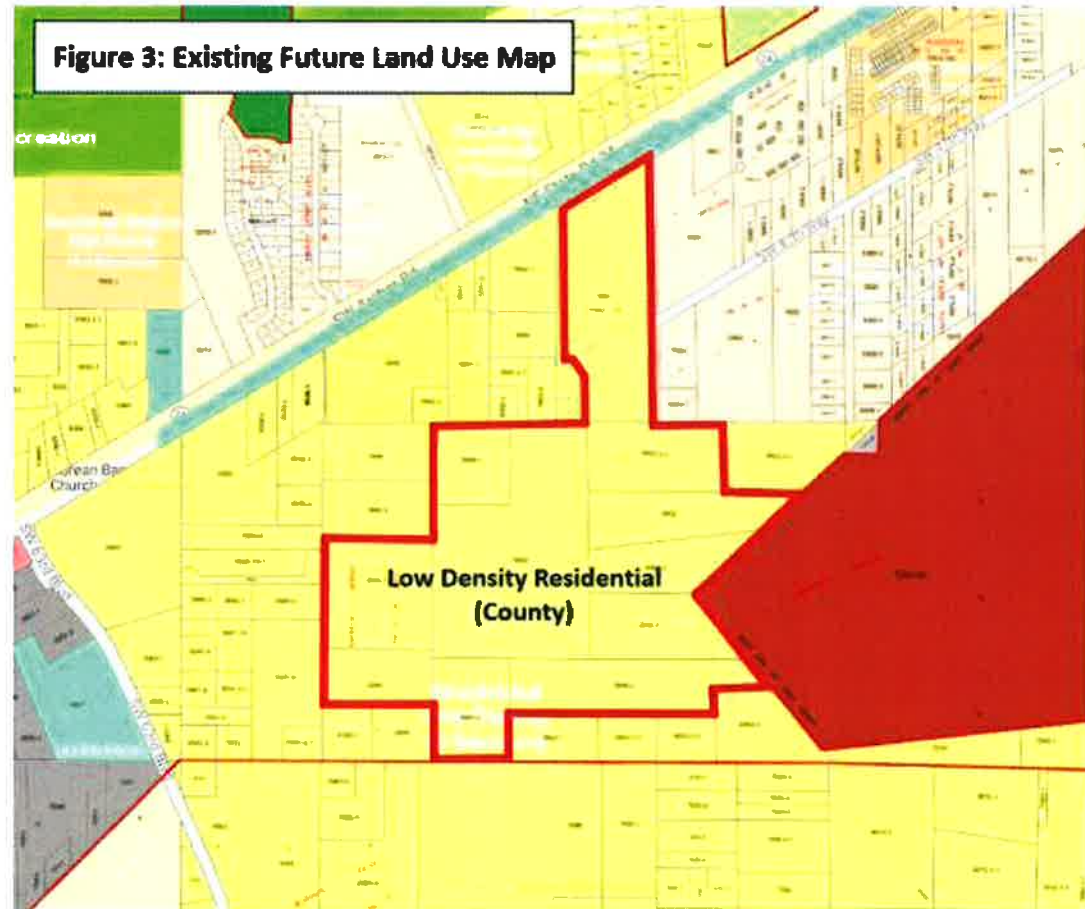
Land Use

Legal

Schedule

# Land Use

**Figure 3: Existing Future Land Use Map**



Petition

Services

Land Use

Legal

Schedule

## Legal Requirement for Annexation

- Contiguous
- Reasonably Compact
- Does not create an enclave

Petition

Services

Land Use

Legal

Schedule

## Next Steps

Date	Action
5/18/2017	First Reading of Annexation Ordinance
6/1/2017	Second Reading of Annexation Ordinance
6/1/2017	Effective Date of Annexation Ordinance