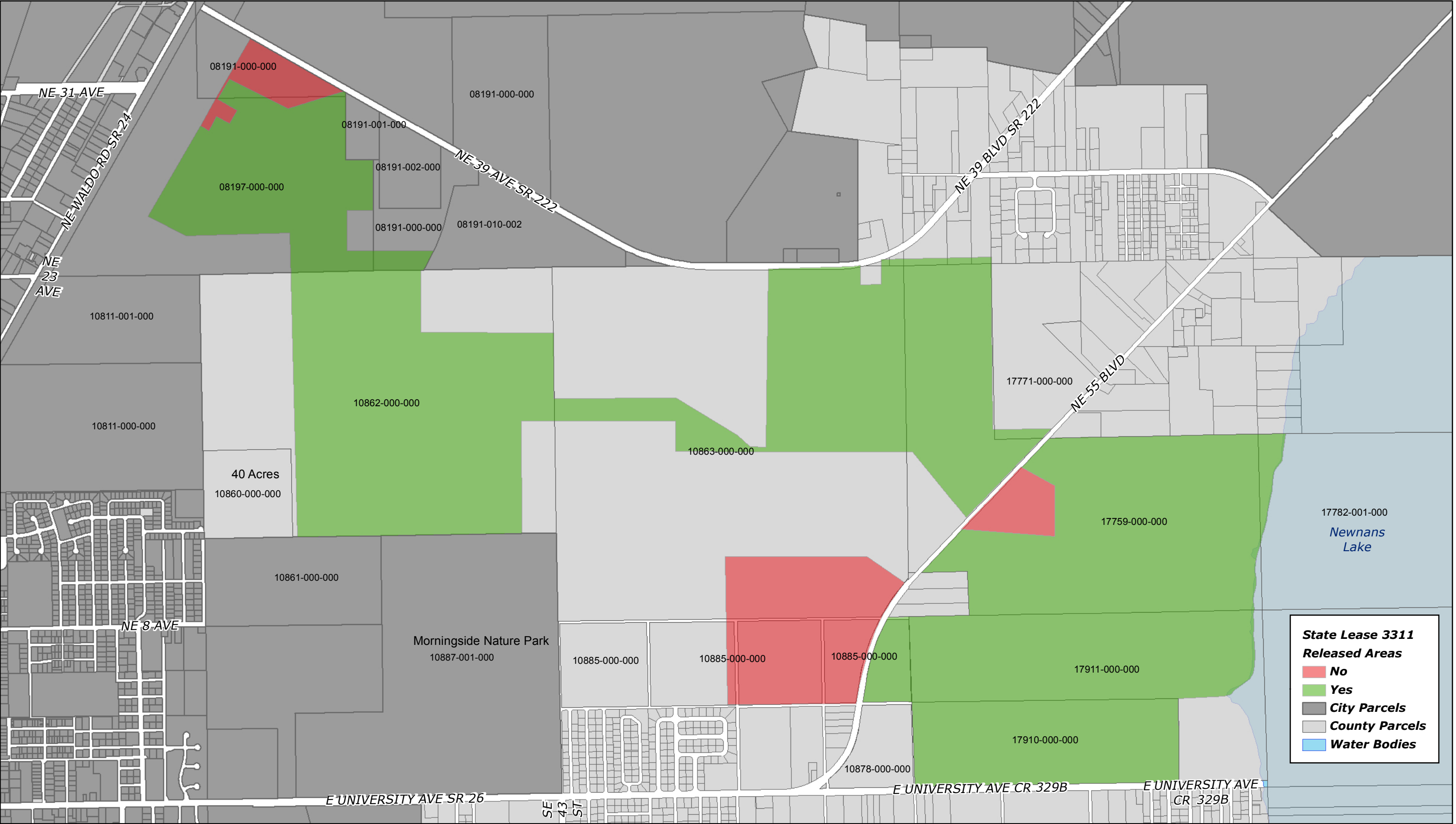


**LEGISLATIVE**

**# 120250B**

Possible Retained/Vacated Areas From State Lease 3311

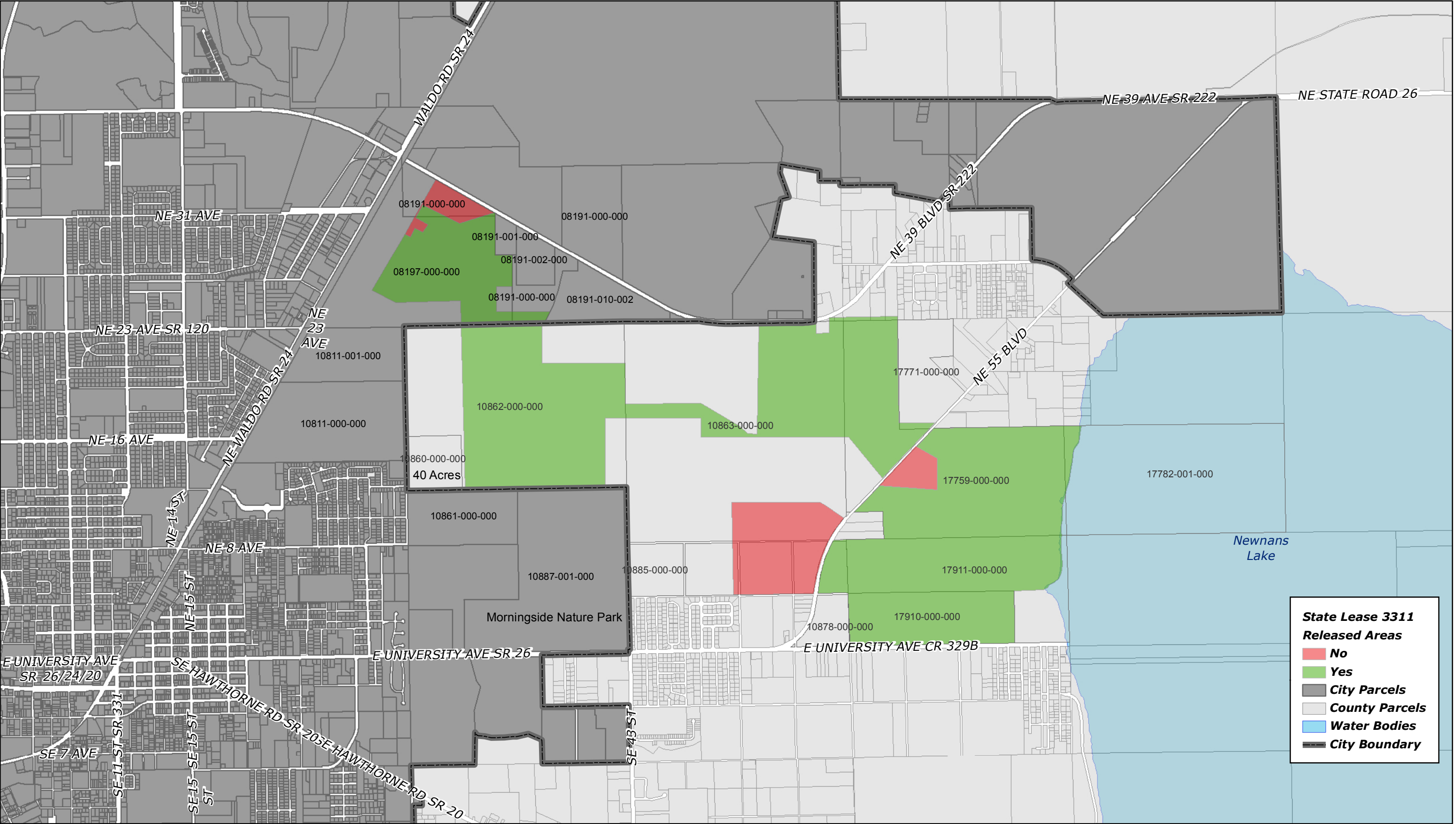


The City of Gainesville has prepared the information depicted on this map for its own use. It is not intended to be, nor should it be, relied upon by others for any purpose. The City of Gainesville assumes no responsibility for errors or omissions in the information on this map. For more information contact Public Works Dept GIS, (352) 334-5070. This map was created on 08/01/2012.


This is not a survey and should not be construed as such



Possible Retained/Vacated Areas From State Lease 3311



The City of Gainesville has prepared the information depicted on this map for its own use. It is not intended to be, nor should it be, relied upon by others for any purpose. The City of Gainesville assumes no responsibility for errors or omissions in the information on this map. For more information contact Public Works Dept GIS, (352) 334-5070. This map was created on 08/01/2012.

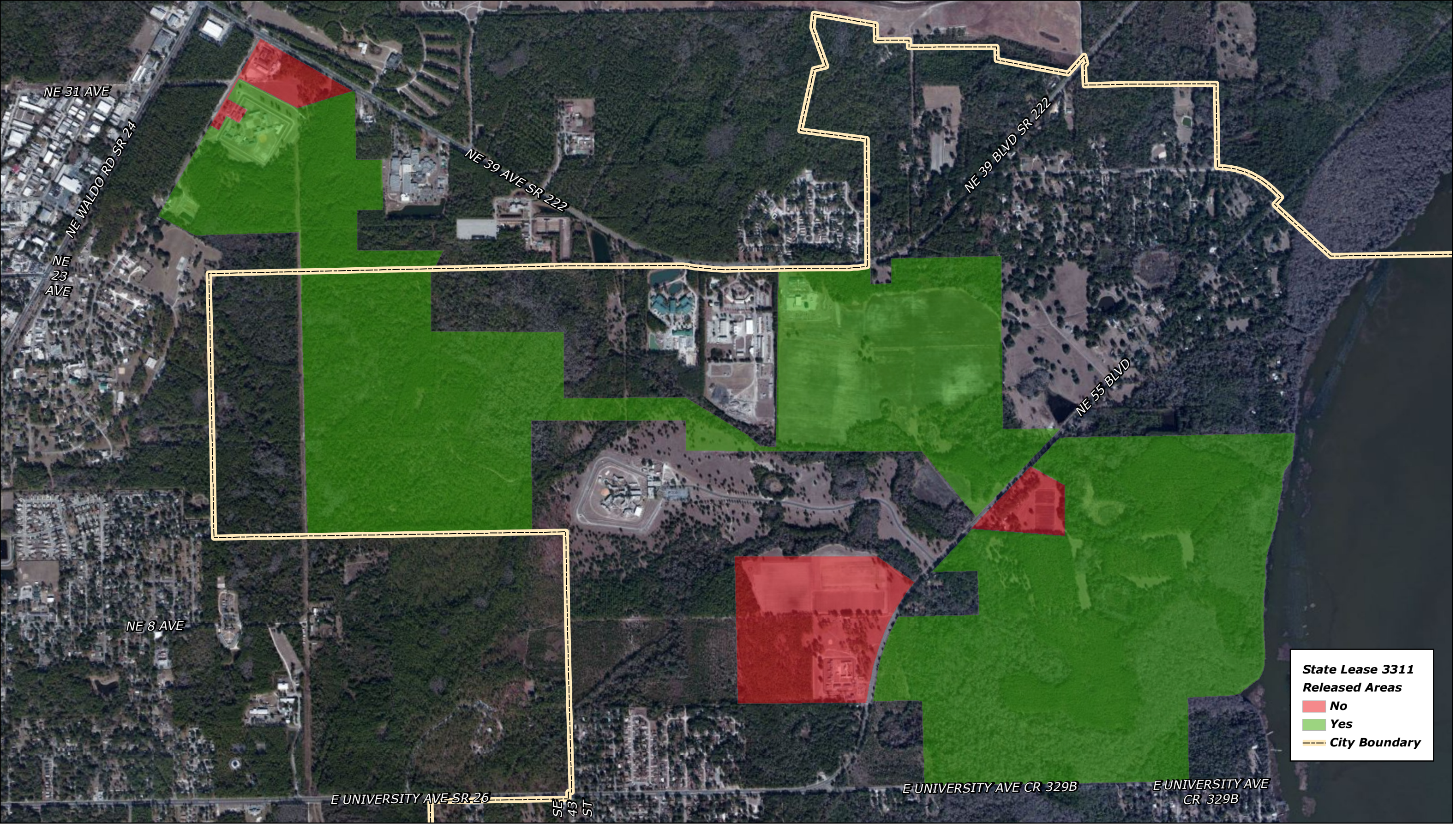


This is not a survey and should not be construed as such





Possible Retained/Vacated Areas From State Lease 3311




**State Lease 3311  
Released Areas**

No

Yes

City Boundary

The City of Gainesville has prepared the information depicted on this map for its own use. It is not intended to be, nor should it be, relied upon by others for any purpose. The City of Gainesville assumes no responsibility for errors or omissions in the information on this map. For more information contact Public Works Dept GIS, (352) 334-5070. This map was created on 08/01/2012.

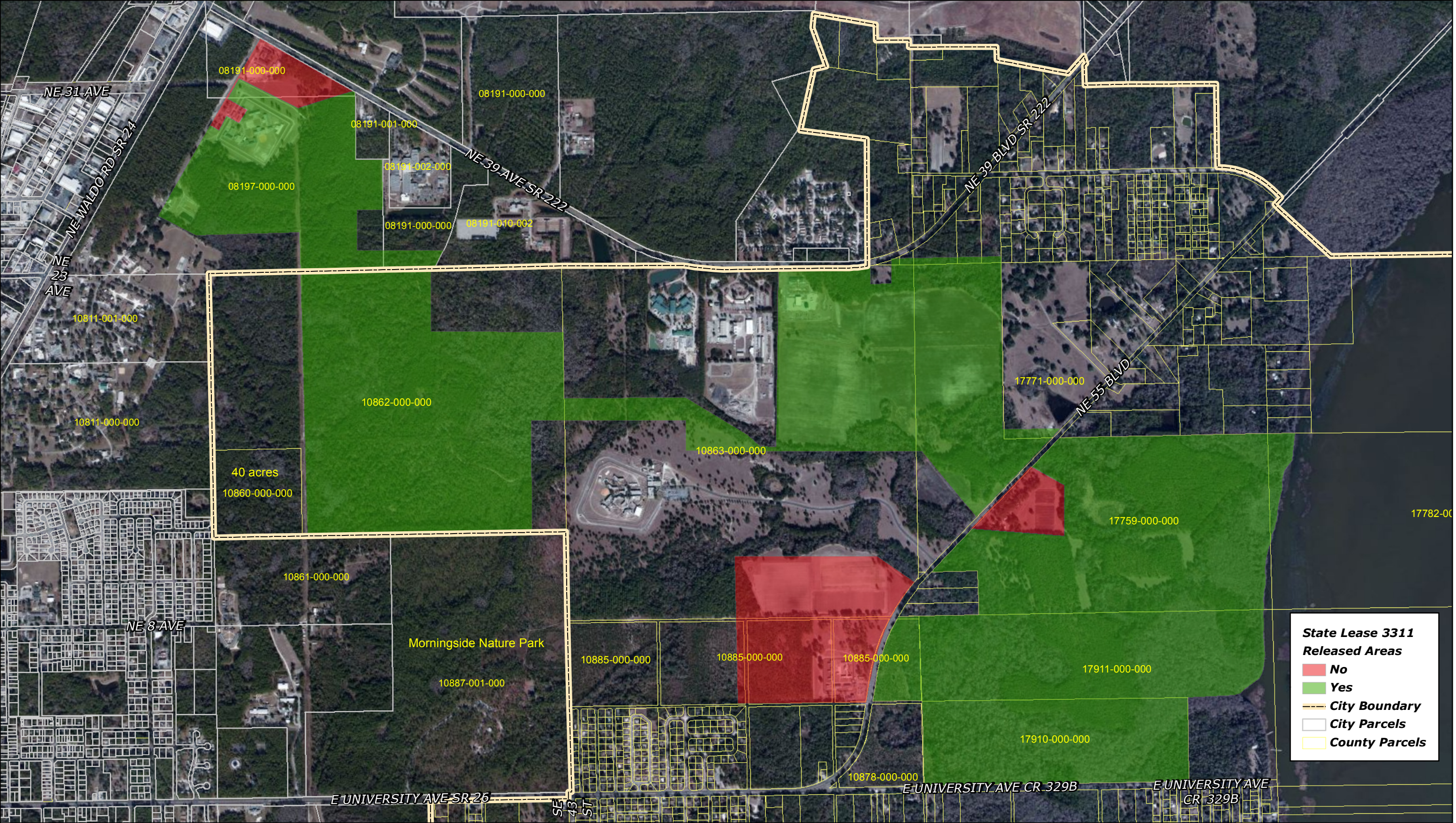


*This is not a survey and should not be construed as such*





Possible Retained/Vacated Areas From State Lease 3311



The City of Gainesville has prepared the information depicted on this map for its own use. It is not intended to be, nor should it be, relied upon by others for any purpose. The City of Gainesville assumes no responsibility for errors or omissions in the information on this map. For more information contact Public Works Dept GIS, (352) 334-5070. This map was created on 08/01/2012.

ACCREDITED AGENCY  
A.P.W.A.

This is not a survey and should not be construed as such

