

What we have today

Gainesville Correctional Institution (GCI)

Recent and swift closing of this state facility
(within the last few months) creates a unique
opportunity for the community, city and
county.

What we want tomorrow

To transform a prison facility into a community asset for job training, entrepreneurship and empowerment.

**“from Correctional Institution
to Community of Innovation”**

What we want tomorrow

**“from Correctional Institution
to Community of Innovation”**

“from Prison to Pride”

What we have today

Gainesville Correctional Institution (GCI)

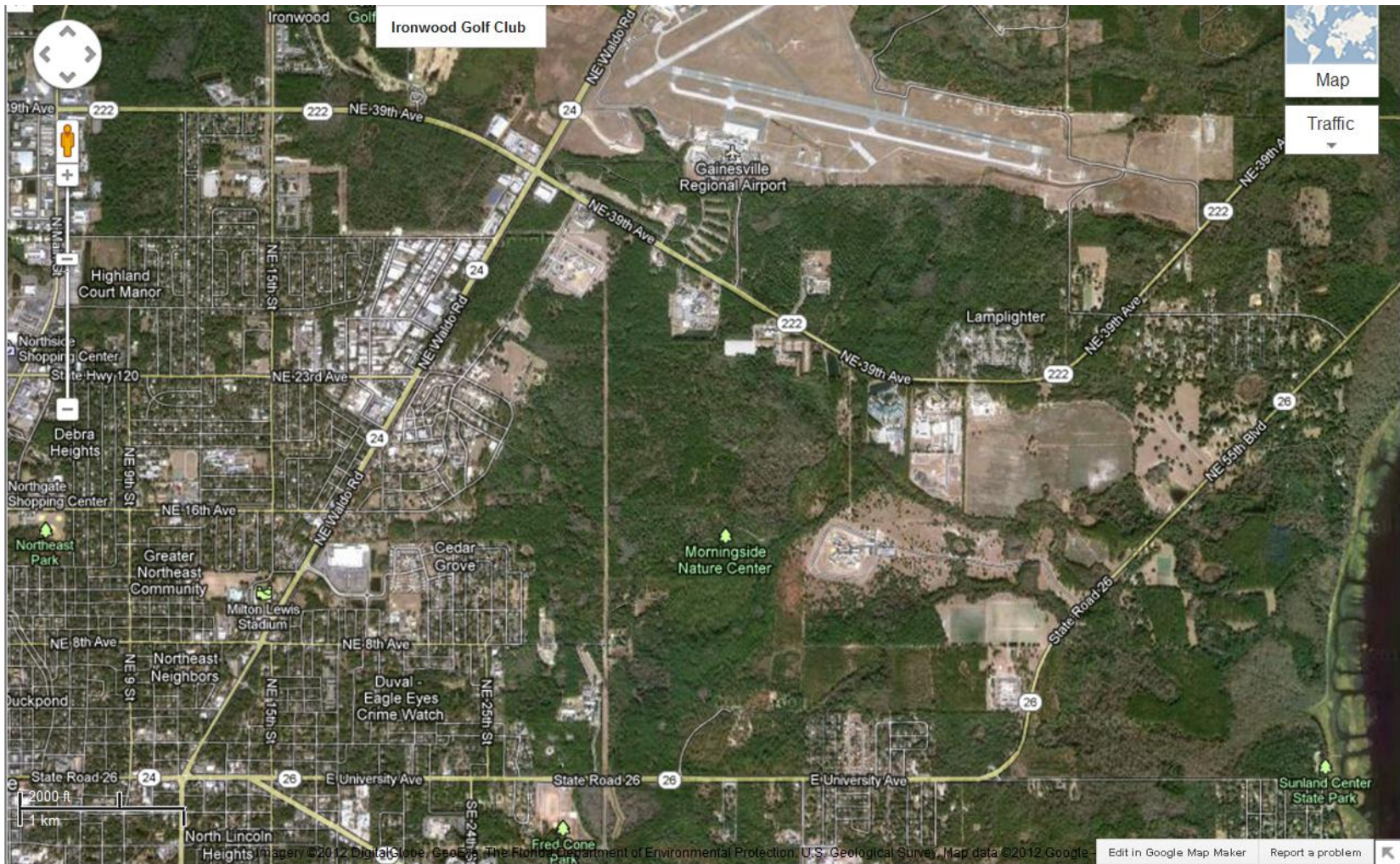
Closed Spring 2012

14 existing buildings

~16 acres within fence

Approx. 20 acres outside fence

Adjacent to ~1200 acres new state forest





© 2012 Google

Google earth

Imagery Date: 1/18/2012 1994

29°40'44.08" N 82°17'25.93" W elev 160 ft

Eye alt 4667 ft



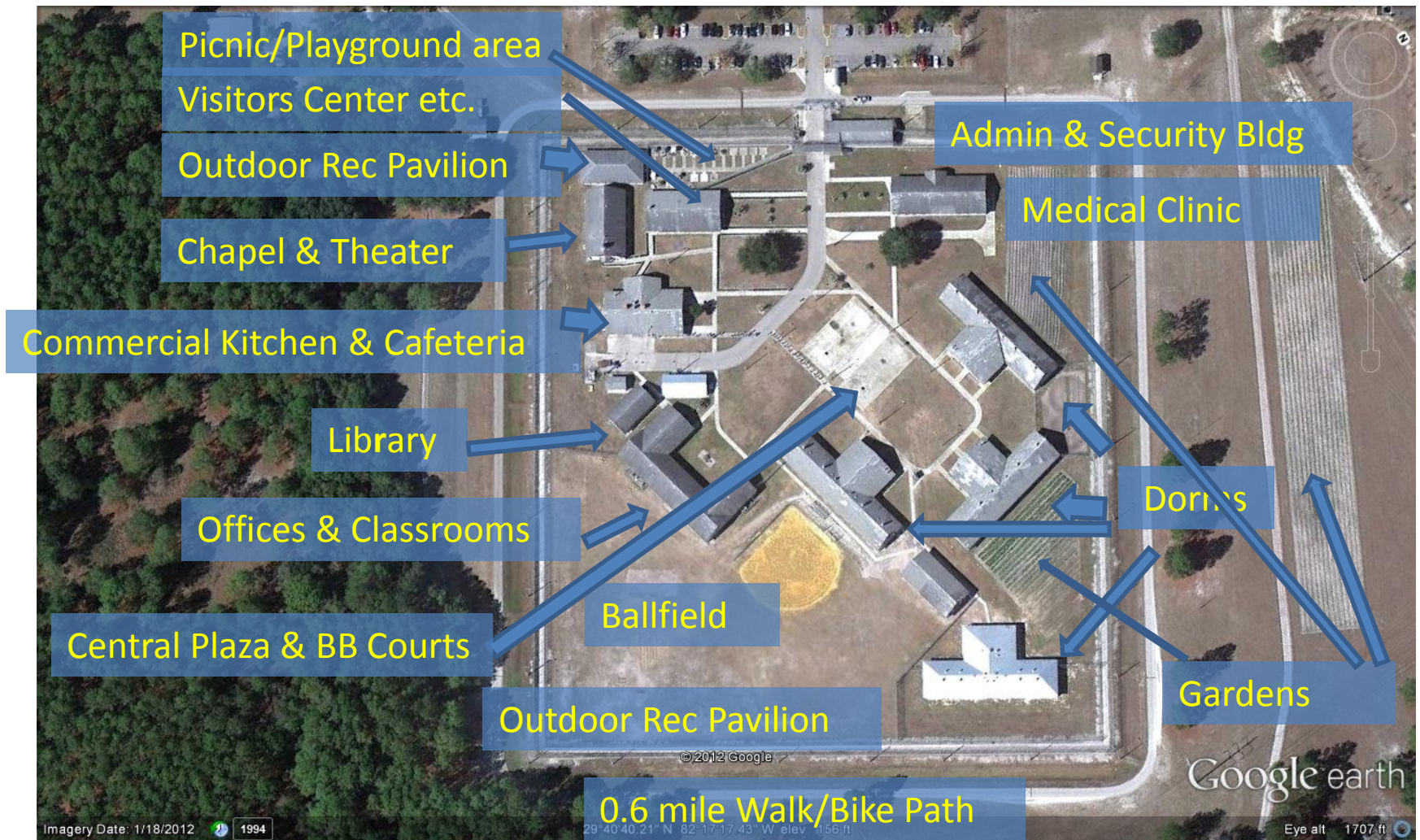
Imagery Date: 1/18/2012

29°40'48.62" N 82°17'06.90" W elev 158 ft

Google earth

Eye alt 1894 ft





What we want tomorrow

To transform a prison facility into a community asset for job training, entrepreneurship and empowerment.

**“from Correctional Institution
to Community of Innovation”**

Suggested Strategic Action Plan

Gainesville **Community of Innovation (GCI)**

1. **Develop a shared community vision** – share the facts, share the vision, agree a common vision
2. **Develop a community plan** – share the vision, gain partners and expertise, develop an action plan and a funding plan
3. **Implement the plan step by step**

Vision for **Gainesville Community of Innovation** must build on existing plans
and vision for the community

Plan East Gainesville

City of Gainesville Strategic Plan

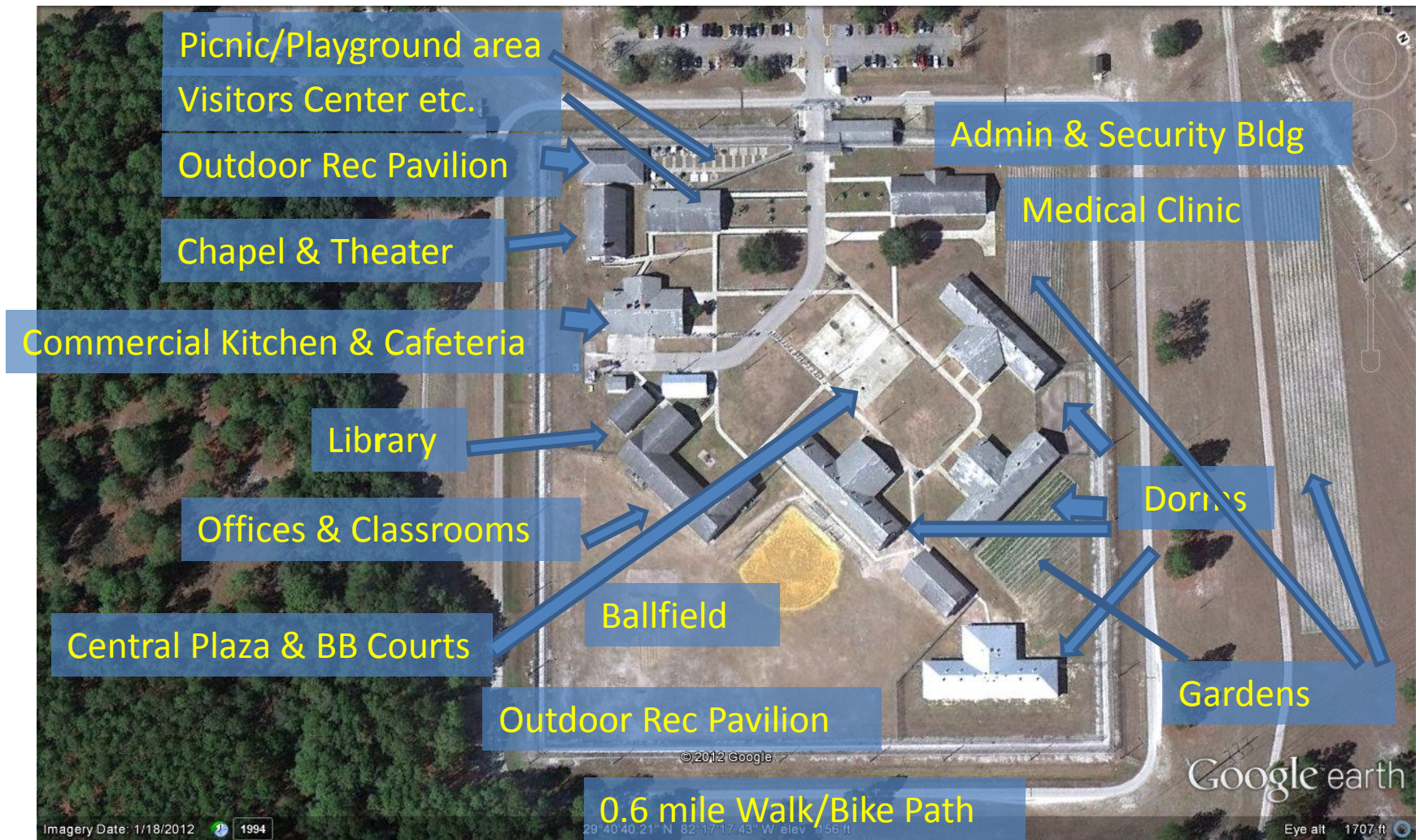
Alachua County Strategic Plan

Community Strategic Plan

Gainesville Community of Innovation

Suggested Action for Today

1. Give permission to our staff and community to fully pursue this opportunity
2. To aim for a clean break from the past use of this site, from prison to community asset
3. To seek full partnership & support from the state
4. Create a process to establish a community vision, clear plan and funding, & a step by step (not all at once) approach





Medical Office



Medical Office



Medical Office



Dormitory (with newer roof & HVAC)



Newer Dormitory (wing 1)



Newer dormitory (wing 2)



New dormitory (bathroom 1)



Newer dormintory (showers 1)



Outdoor Recreation Pavilion (next to ballfield)



Ballfield



Offices and Classrooms



Offices & Classrooms Bldg



Commercial Kitchen



Commercial Kitchen



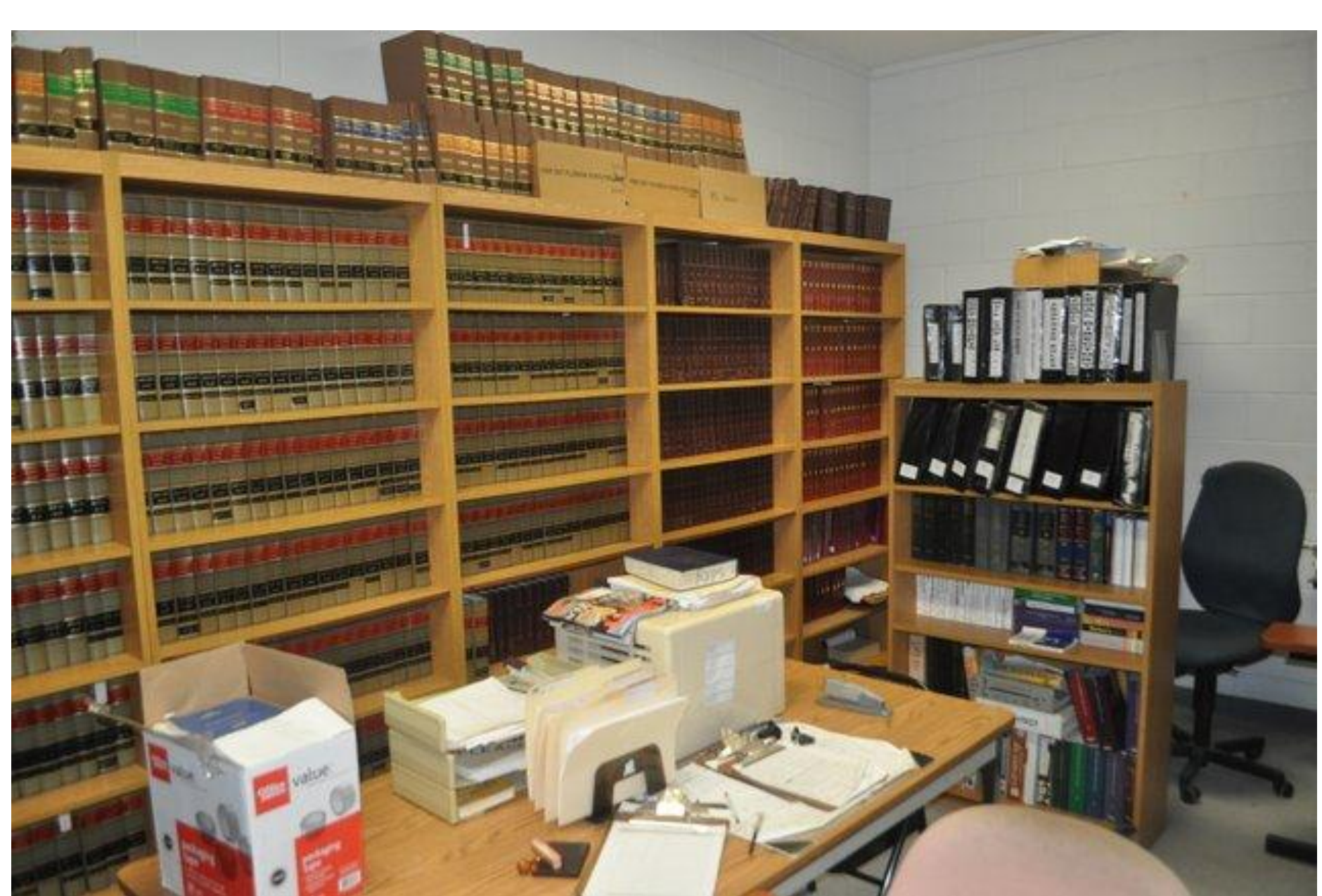
Commercial Kitchen



Cafeteria



Library





Commercial Laundry



Chapel & Theater



Chapel Library



Visitor Center, Barbershop, Canteen, etc.



Outdoor Pavilion next to visitor center

Picnic area & playground







Urgent Action needed to protect facility for future use



Strategic Action Plan

Goal is to reverse decades of economic decline and lack of investment & poise area for a resurgence

Build on assets: airport, downtown & UF proximity, good road network, abundant natural resources.

Balance need for economic development, environmental conservation

Coordinate city-county planning for preservation of community character, quality development, and revitalization of East Gainesville

Builds on adopted MTPO 2020 Livable Community Investment Plan

Plan East Gainesville

Goal is to reverse decades of economic decline and lack of investment & poise area for a resurgence

Build on assets: airport, downtown & UF proximity, good road network, abundant natural resources.

Balance need for economic development, environmental conservation

Coordinate city-county planning for preservation of community character, quality development, and revitalization of East Gainesville

Builds on adopted MTPO 2020 Livable Community Investment Plan

Plan East Gainesville

Primary Goals

- *Expand the range of housing choices to attract and retain residents with a variety of income levels;*
- *Target specific areas for mixed-use development centers that can support and sustain higher levels of employment, commercial and social activities;*
- *Protect vital natural resources, such as the watersheds, creeks, tree canopy and scenic vistas that make East Gainesville unique;*
 - *Create opportunities for increased walking, bicycling and transit use through compact development patterns, urban design and development of new facilities and services, and*
- *Improve the inter-connectivity of the transportation system to minimize impacts to the state highway system and ensure improved accessibility between East Gainesville and other parts of the Gainesville urbanized area.*

City of Gainesville

Strategic Plan

1. Maintain a safe and healthy community in which to live
2. Foster economic development and encourage redevelopment
3. Assist every person to reach their true potential
4. Measure and improve the cost-effectiveness of government services
5. Invest in community infrastructure and continue to enhance the transportation network and systems
6. Improve the quality of life in our neighborhoods for the benefit of all residents
7. Protect and sustain our natural environment and address future energy needs

United Way Coordinated **Community Strategic Plan**

Education

All **adults have the skills they need to succeed in life**; All children succeed in school

Financial Stability

Households are able to meet their basic needs with or without public assistance;
All children live in stable supportive families

Health

All adults are physically and mentally healthy; All children are healthy, thriving in all respects

Safety

All adults live in safe communities; All children live in safe and supportive communities

What is the vision?

from Correctional Institution to Community of Innovation

Gainesville Community of Innovation

Cost-effective, innovative, and grassroots solutions that build upon the unique skills, resources, talents and interests of citizens, businesses, non-profits, and public agencies in Gainesville and Alachua County

Gainesville Community of Innovation (GCI)

**Envisioning a community village of
beauty, service, empowerment,
economic and cultural activity**

Ideas for Programs & Services

Advancing Family Assets Partnership
Culinary Arts and Food Business Incubator
Alachua County Extension Services
Santa Fe College CIED and EGI
Volunteer Services
Conflict Management and Peacebuilding
Library
Chapel and Community Theater

Ideas for Programs & Services

Senior Center

Non-profit hub; an incubator for NPOs

One stop employment center; career development;
job training; workforce development

Community Garden/ Farmers Market

Arts; arts mart

Something similar to the Library Partnership – very
neighborhood friendly

Drop-in childcare center for parents who are at GCI for
training, work or services, or for parents to use while
working or job-hunting

Ideas for Programs & Services

Expanded hours. Be open evenings and weekends, no
9-5

Get buy-in across sectors

“Maker Space” – check out Skill House downtown

Santa Fe classes

Commercial/Industrial kitchen for cottage industries

Copy “Depot Use Team”

Phased approach

Public/Private partnership

Ideas for Programs & Services

Feasibility of ideas – costs, community support

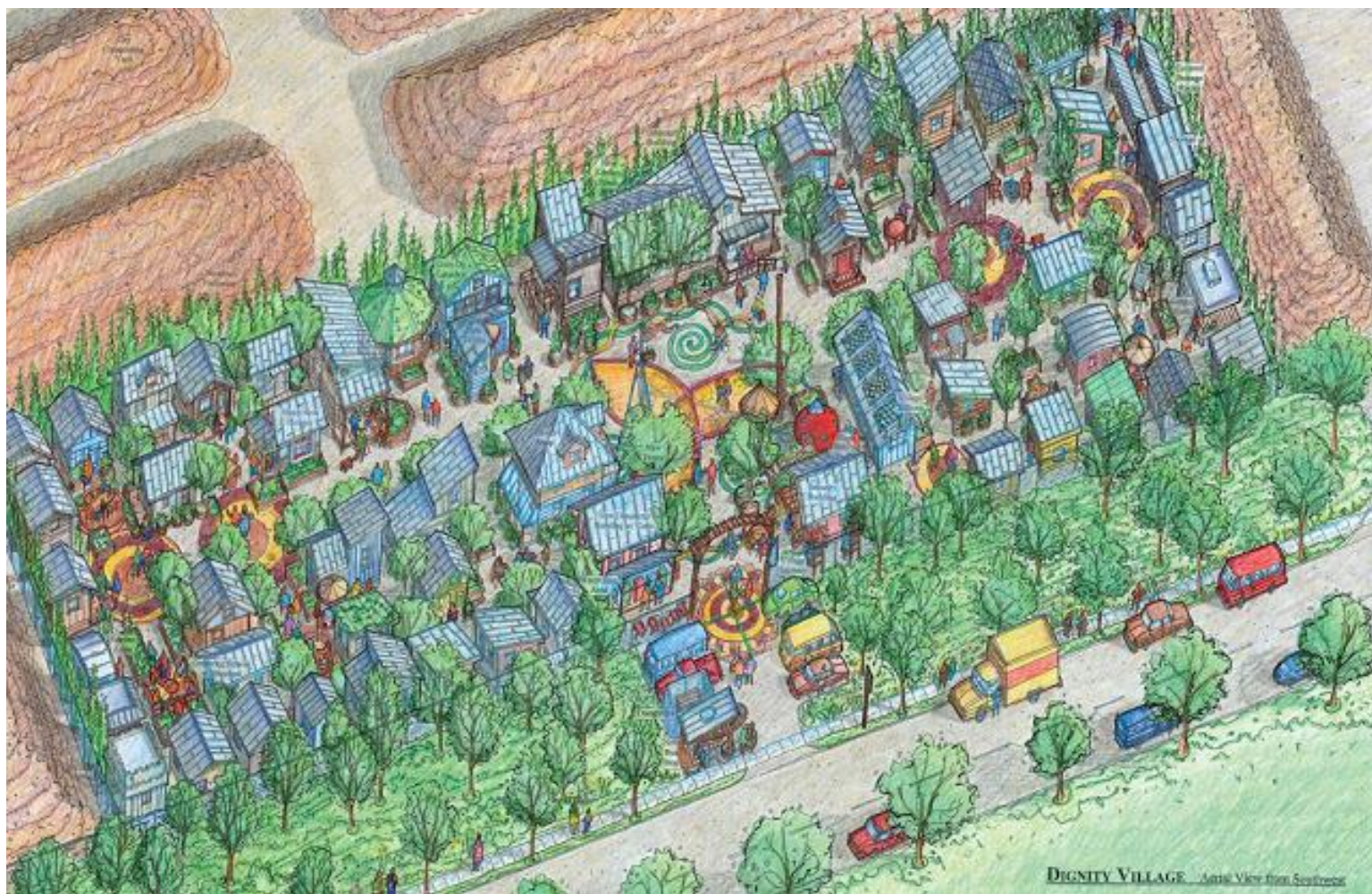
Regular Community Work Day site for cleanup, painting, minor repairs, outreach, volunteers, etc

CCC-like team based training/employment program,
perhaps like Grace STEP or “Environmental
Ambassadors”

“Do it here – it all helps to strengthen the community”







DIGNITY VILLAGE - Artist View from Southwest



[Home](#)
[About Us](#)
[Leadership](#)
[FAQs](#)
[Press Room](#)
[Contact Us](#)

Welcome to Focal Point Community Campus



Breakthrough Model for Community Development

Focal Point community campus will provide valuable programs and services to more than 400,000 residents in the Southwest and West Chicago communities, while serving as a national model for community development. The campus will reside on the 11-acre lot at 31st and Kedzie in Southwest Chicago, the former site of the Washburne Trade School.



Mather Community Campus (MCC)

Mathew Community Campus provides an opportunity for single adults and families to build new personal and professional lives. MCC is dedicated to providing the best possible services and a supportive environment to learn new skills and build a healthy lifestyle – including housing, services, recreation, community spirit, and transportation.

Aspen Community Campus

Aspen, Colorado



INFO
▼



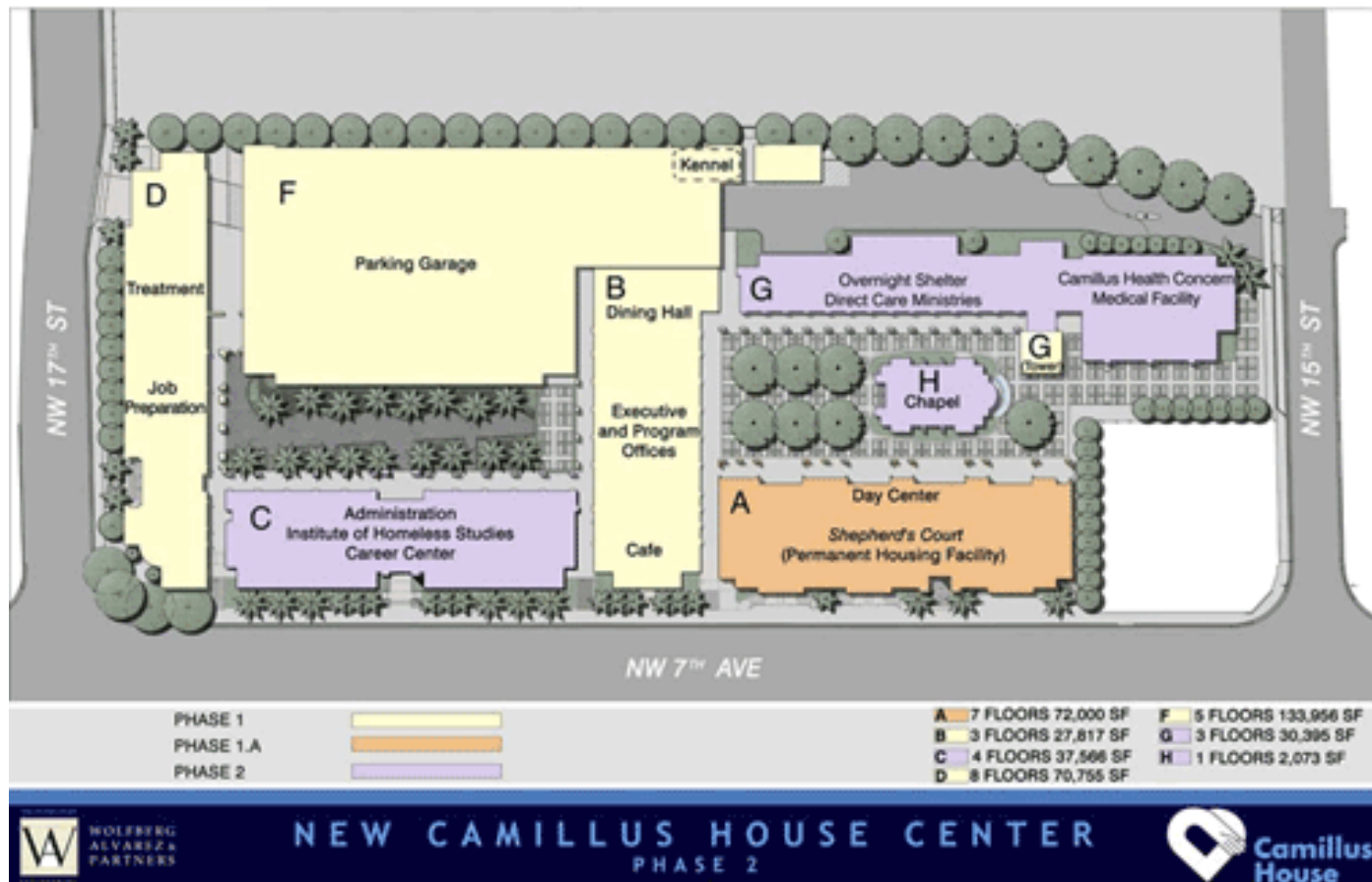


















Campaign Progress

[Follow Live Construction of the New Campus with iBeam](#)

(Image updated every 15 minutes during the work day)

To date, the ***Open the Door to Hope*** campaign has raised \$76.7 million,
\$40.4 million is coming from the public sector while
\$36.3 million has been generated from the private sector.

<i>Campaign Funding Sources</i>	<i>Raised to Date</i>	<i>Goal</i>	<i>% of Goal</i>
Private Philanthropic Funding	\$36,299,184	\$40,000,000	90.75
Public Funding	\$40,414,744	\$44,000,000	91.85
TOTAL	\$76,713,928	\$84,000,000	91.33

Aerial Views of new Norwegian Cruise Line Campus of Camillus House
(photos taken October 19, 2012)

AN EVENING CELEBRATING ART, SCIENCE & CULTURE

6:30 PM AT THE NORTHEAST POOL
Galvesville Gavlatas Synchronized Swimming:
The Art & Science of Conservation of Motion

Jorge Varlego, *Musik From Space: Black Holes, Planets, Light Waves*

AND
NASA Activity Table
Howard Bishop Symphonic Winds
EGS Summer Camp Astro-Art Exhibit
Telescope Observations
ASTREC Small Satellite Design
Art Activities
Gottschalk Music For All Table
Pizza & Soda For Sale

UF

2025 RELEASE UNDER E.O. 14176
 The following information was obtained from the National Archives and Records Administration (NARA) and is being released to the public in accordance with the provisions of Executive Order 14176, dated August 17, 2025. The information was obtained from the NARA's collection of records relating to the activities of the Central Intelligence Agency (CIA) and is being released to the public in accordance with the provisions of Executive Order 14176, dated August 17, 2025. The information was obtained from the NARA's collection of records relating to the activities of the Central Intelligence Agency (CIA) and is being released to the public in accordance with the provisions of Executive Order 14176, dated August 17, 2025.



East Gainesville organization focused on education

Building a network of faith-based partners is another key aspect.



Santa Fe College President Jackson Sasser addresses participants during a community forum outlining the strategic plan for the East Gainesville Instruction at Mount Carmel Baptist Church on Thursday.

MOST READ

- [Beating Dawgs clinches East](#)
- [Donovan pleased with ability of freshmen](#)
- [Dooley: Gators at 7-0 in unusual way](#)
- [SEC honors Florida punter](#)
- [Gators ruling the roost](#)

MOST EMAILED

MOST RECENT

PHOTOS



The Old Armory Building



Scene: Arbor House Embark



NAA Fun Banquet



Micanopy Fall Harvest Fest



Alachua County Fair



UF v. SEC





**BlueOven
Kitchens**
Nurturing Food Entrepreneurs + Growing the Local Food Economy



Gainesville
COMPOST
From Waste to Food



DEVELOP A COMMUNITY VISION AND PLAN

Contractors/Builders organizations, Santa Fe College Construction & Technical Ed, UF College of Design, Construction and Planning, Florida Community Design Center /



DEVELOP A SHARED COMMUNITY VISION

Contractors/Builders organizations, Santa Fe College Construction & Technical Ed, UF College of Design, Construction and Planning, Florida Community Design Center /

