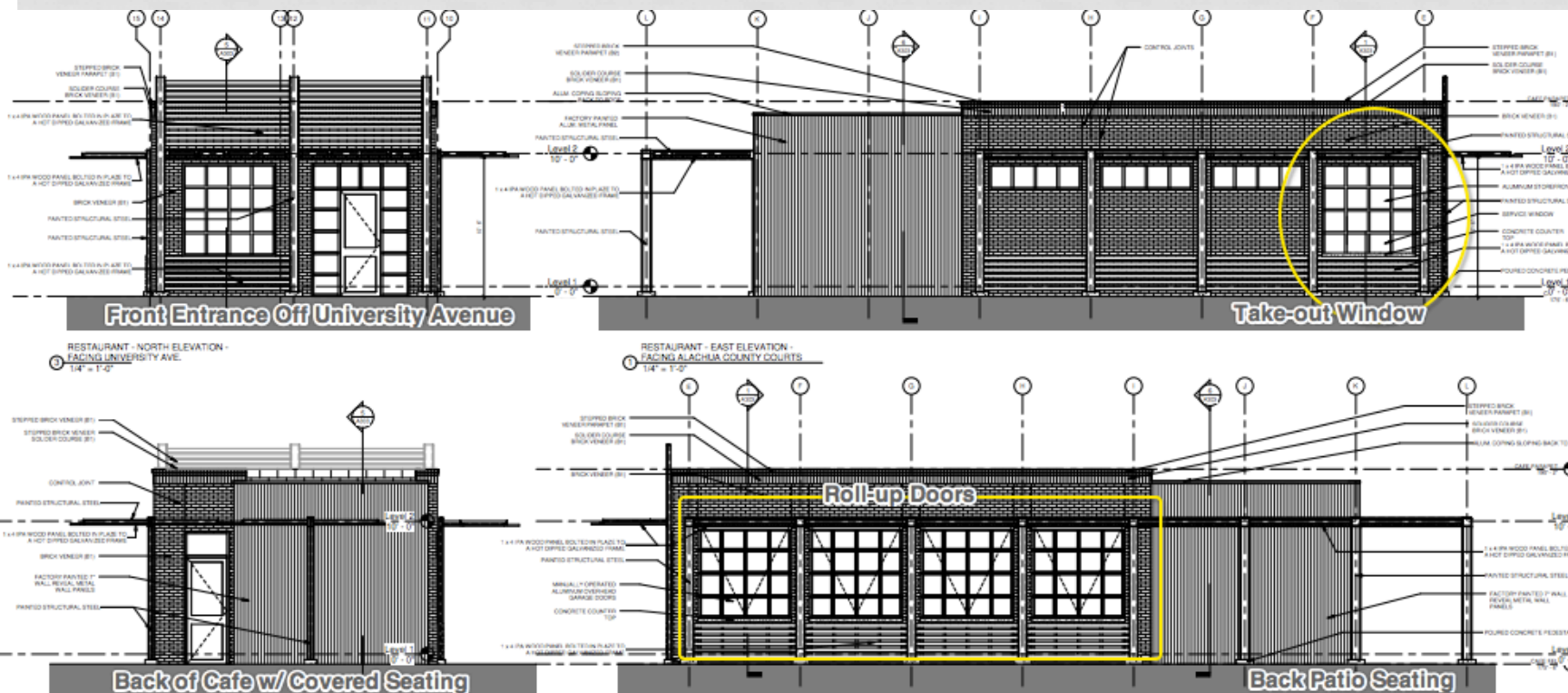


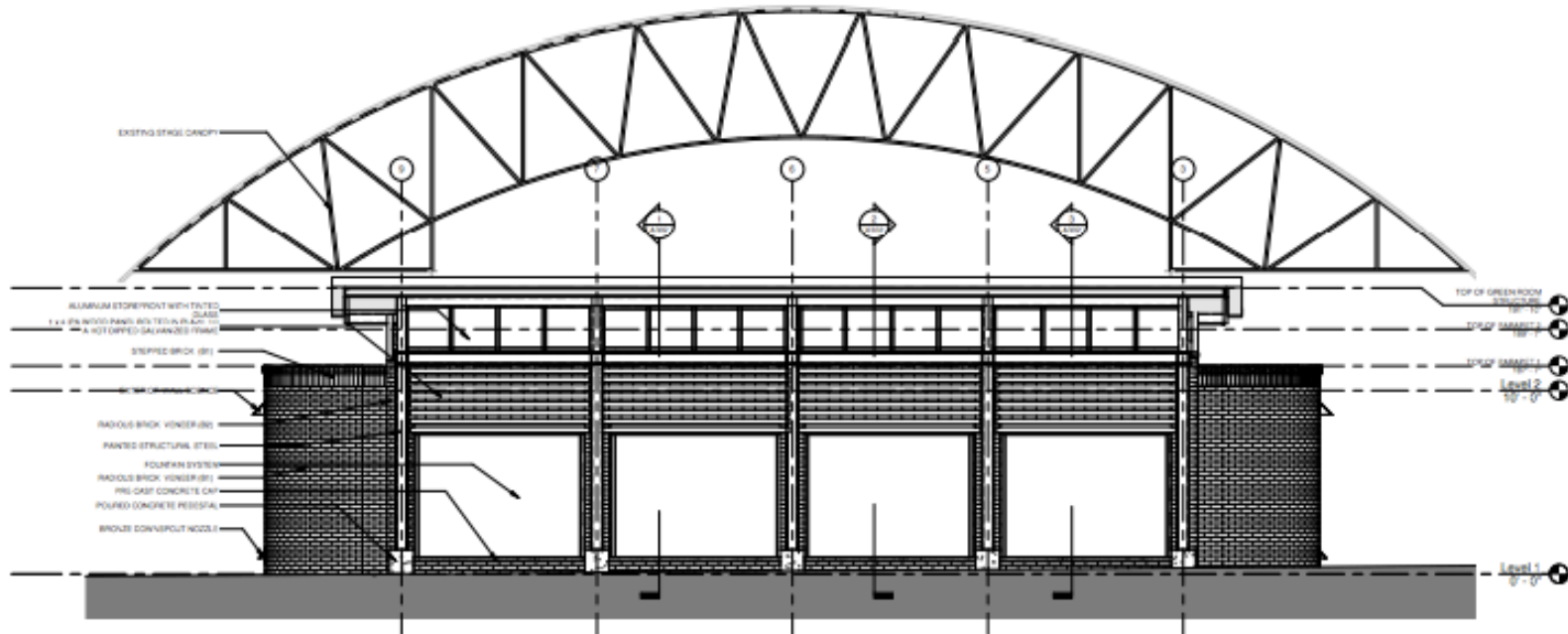
STAKEHOLDER FEEDBACK: DESIGN

- Café (972sf heated/cooled, 894sf overhangs/porches)
 - Incorporated roll up garage doors to the west wall to encourage openness
 - Take-out window to activate east wall
 - Originally 300sf



STAKEHOLDER FEEDBACK: DESIGN

- Green Room (1,158sf heated/cooled, 209sf overhangs/porches)
 - Kept four “bays” of the water wall, clerestory windows and a flat roof (elements of old commercial storefronts with transom windows)
 - Originally 920sf



STAKEHOLDER FEEDBACK: DESIGN

- Kiosk (134sf heated/cooled, 156sf overhangs/porches)
 - Relocated flush with the green room and café improvements
 - Added square footage for greater flexibility
 - Incorporated air conditioning
 - Signage

