



01

Inspire

02

Design

03

Experiment

P R E S E N T E D B Y C I T Y O F G A I N E S V I L L E
S T R A T E G I C P L A N N I N G

please share on a board...

**WHAT DO YOU
LOVE ABOUT
GAINESVILLE?**

welcome

MAYOR

LAUREN

POE

objectives

- **CELEBRATING GAINESVILLE**
- **SETTING THE STAGE**
- **UNDERSTANDING COMMUNITY GOALS**
- **ENVISIONING THE FUTURE**

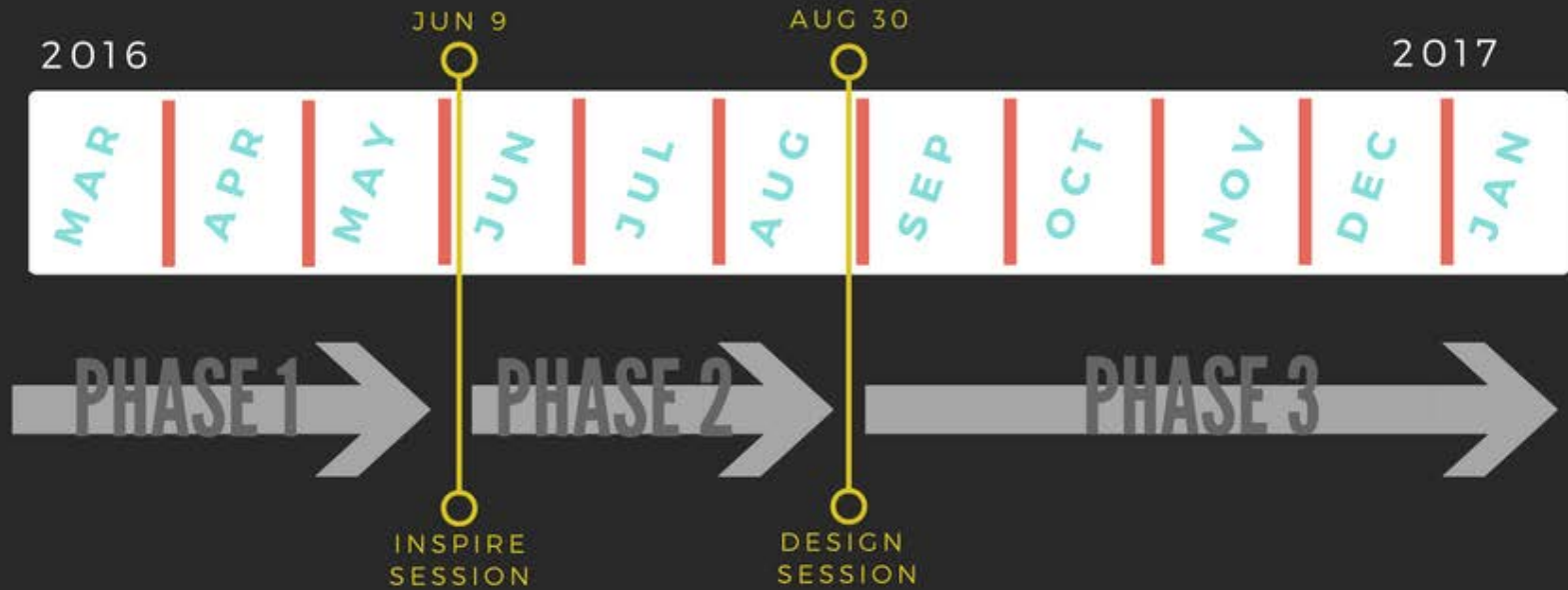
celebrating gainesville

WHAT DO YOU

LOVE ABOUT

GAINESVILLE?

gainesville creative series



PHASE ONE

Citizen outreach
Commission & staff interviews
Insight statements

PHASE TWO

Shared purpose
Understanding community goals
Future Gainesville

PHASE THREE

Observing
Experimenting
Implementing

setting the stage

**HAS OUR STRATEGIC PLAN
AFFECTED THE POSITIVE CHANGE
DESIRED BY THE COMMUNITY?**

setting the stage

**HOW CAN WE APPROACH
BIG CHALLENGES DIFFERENTLY
SO POSITIVE CHANGE
IS EVIDENT IN CITIZENS' LIVES?**

setting the stage

WHY?

HOW?

WHAT?

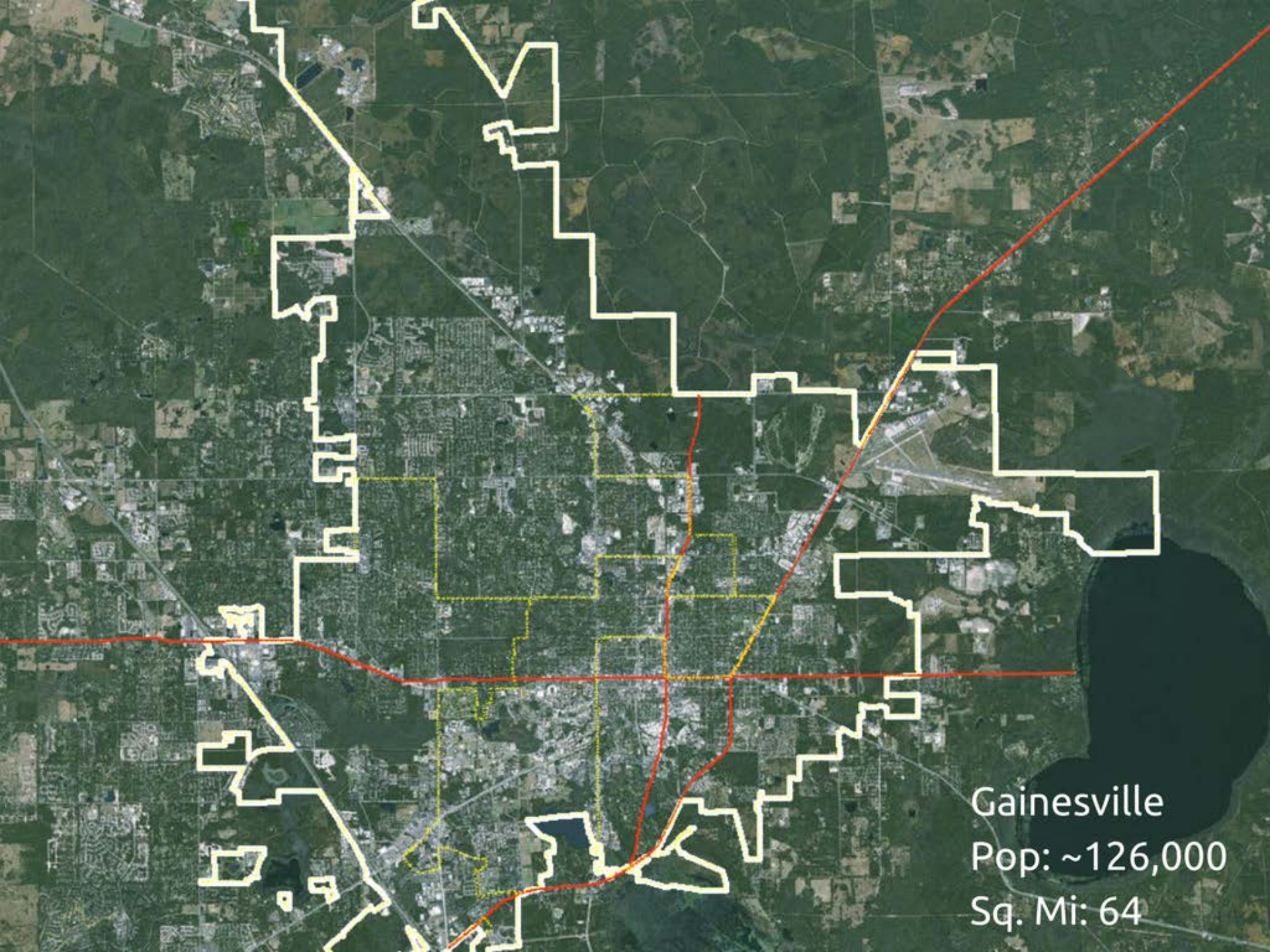


setting the stage

**THE PURPOSE OF THE CITY IS
THE PEOPLE OF THE CITY**

setting the stage

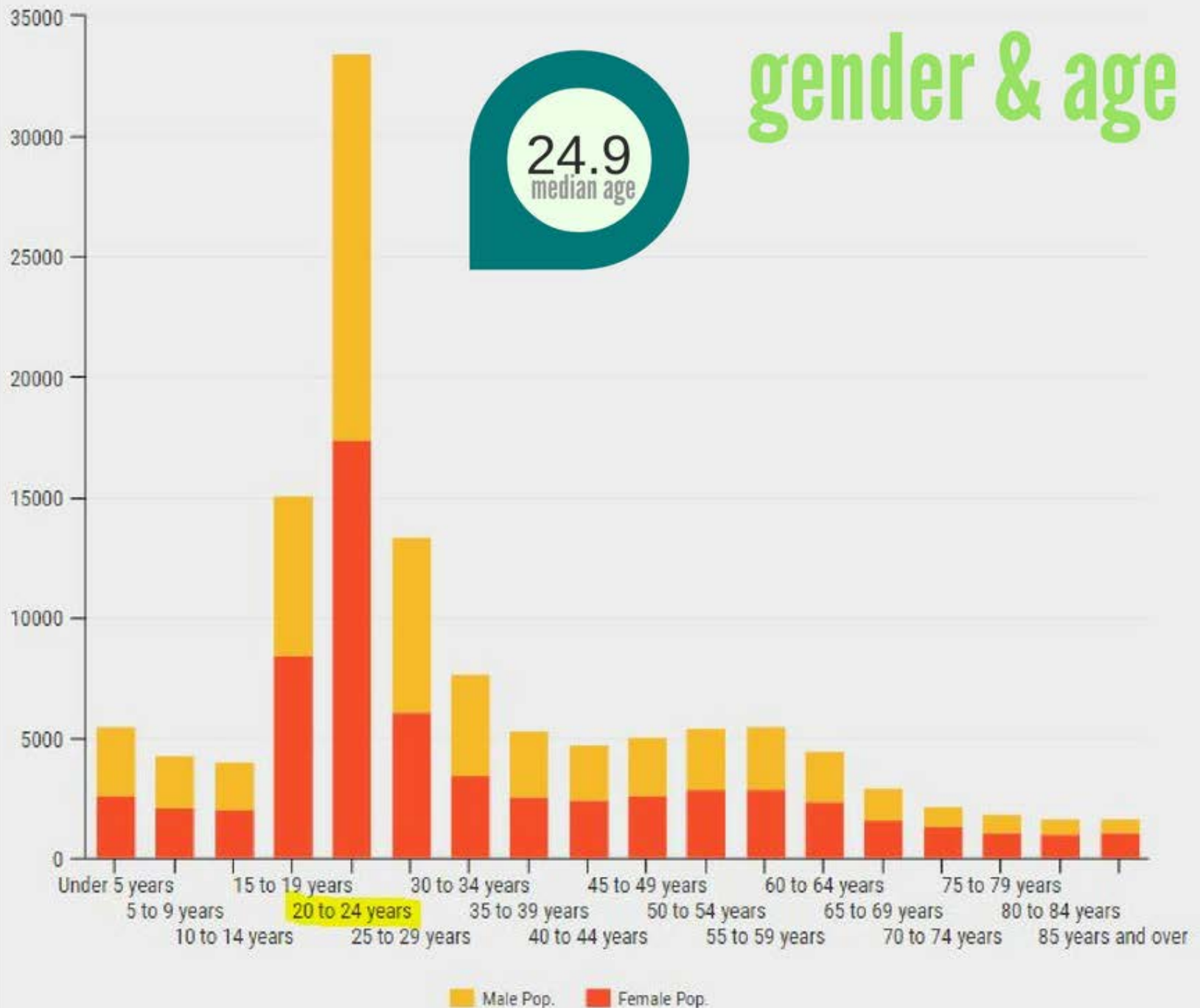
**WHO ARE THE PEOPLE
OF OUR CITY?**



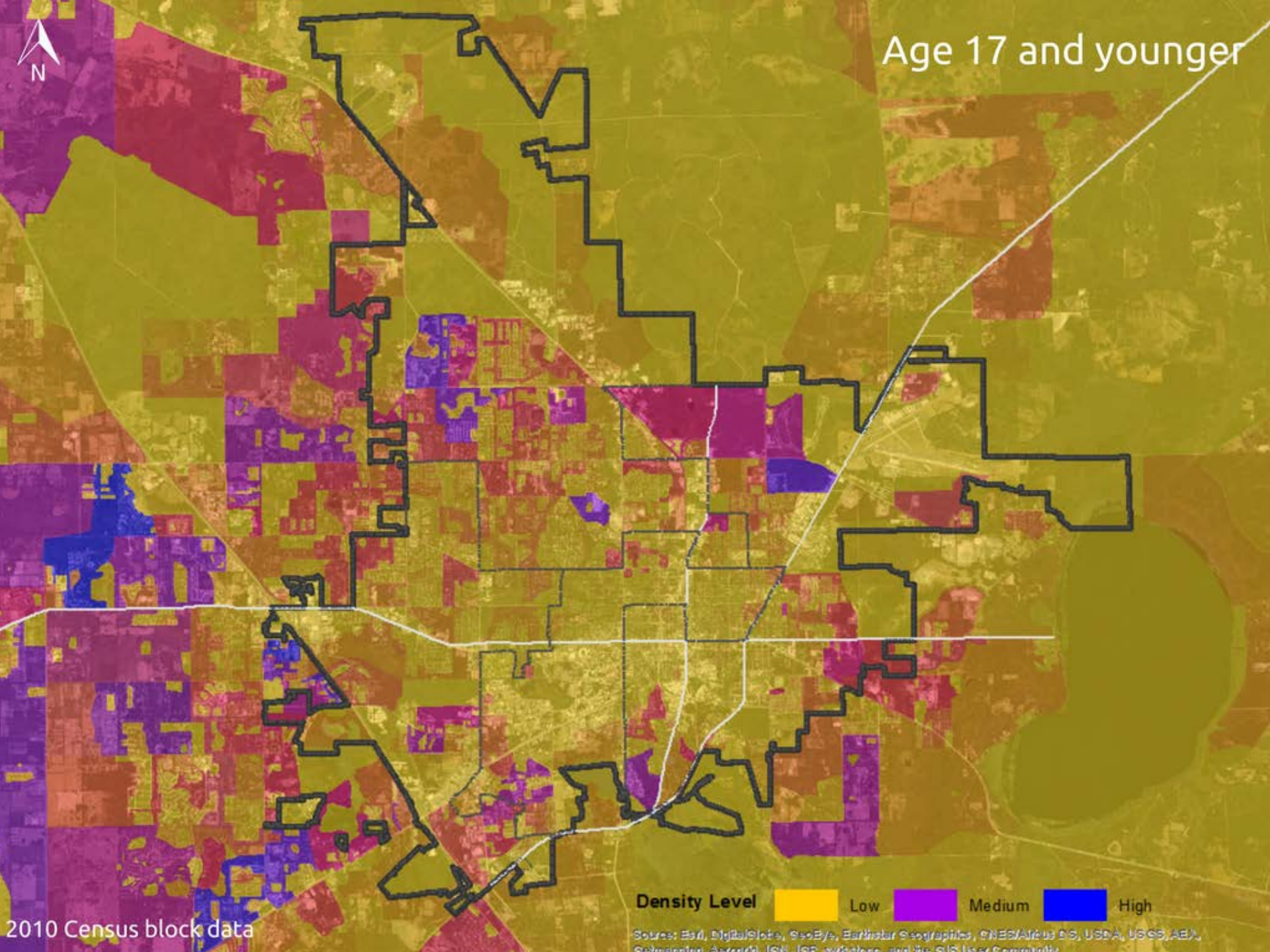
Gainesville
Pop: ~126,000
Sq. Mi: 64

gender & age

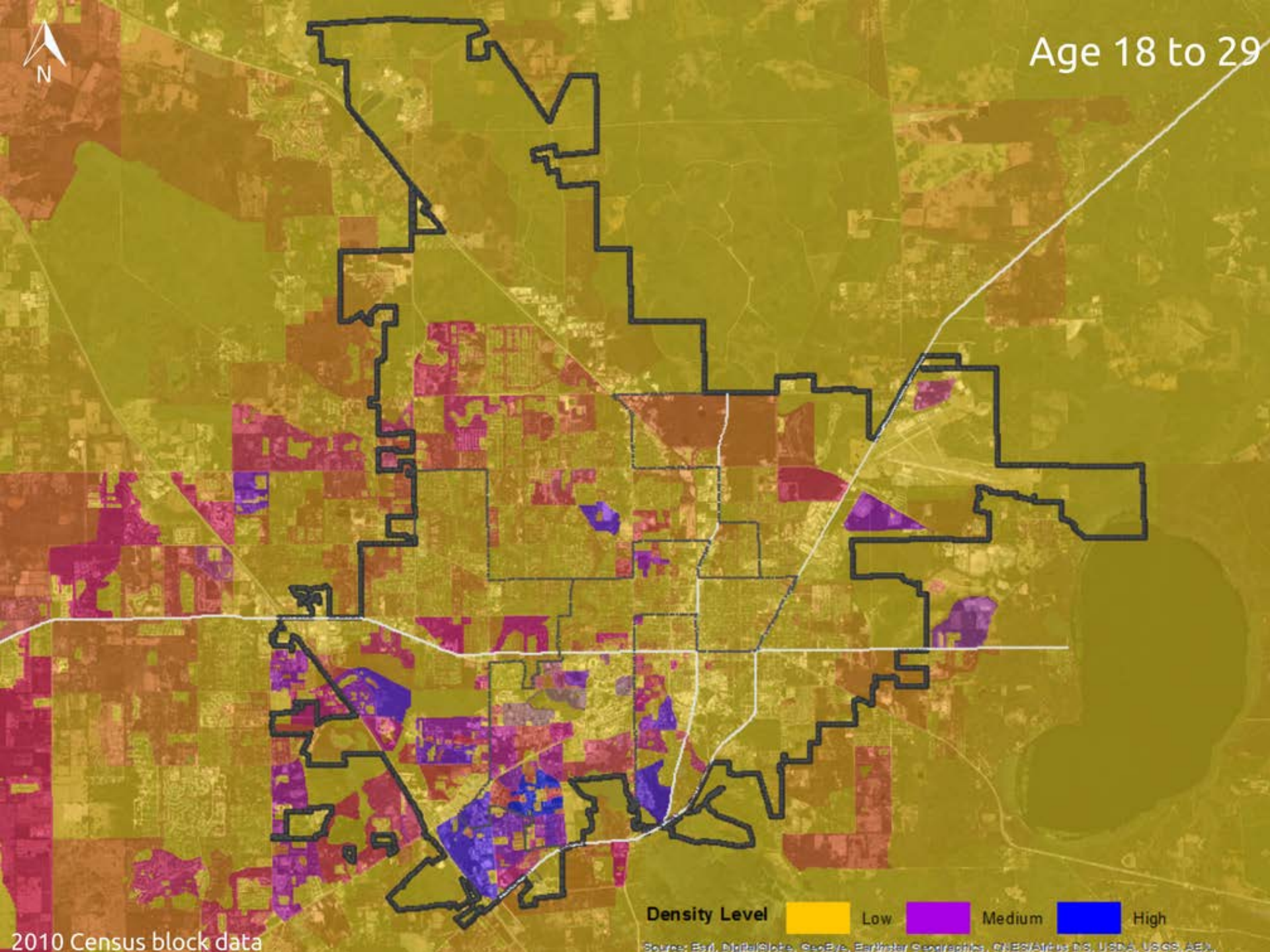
24.9
median age



Age 17 and younger



Age 18 to 29

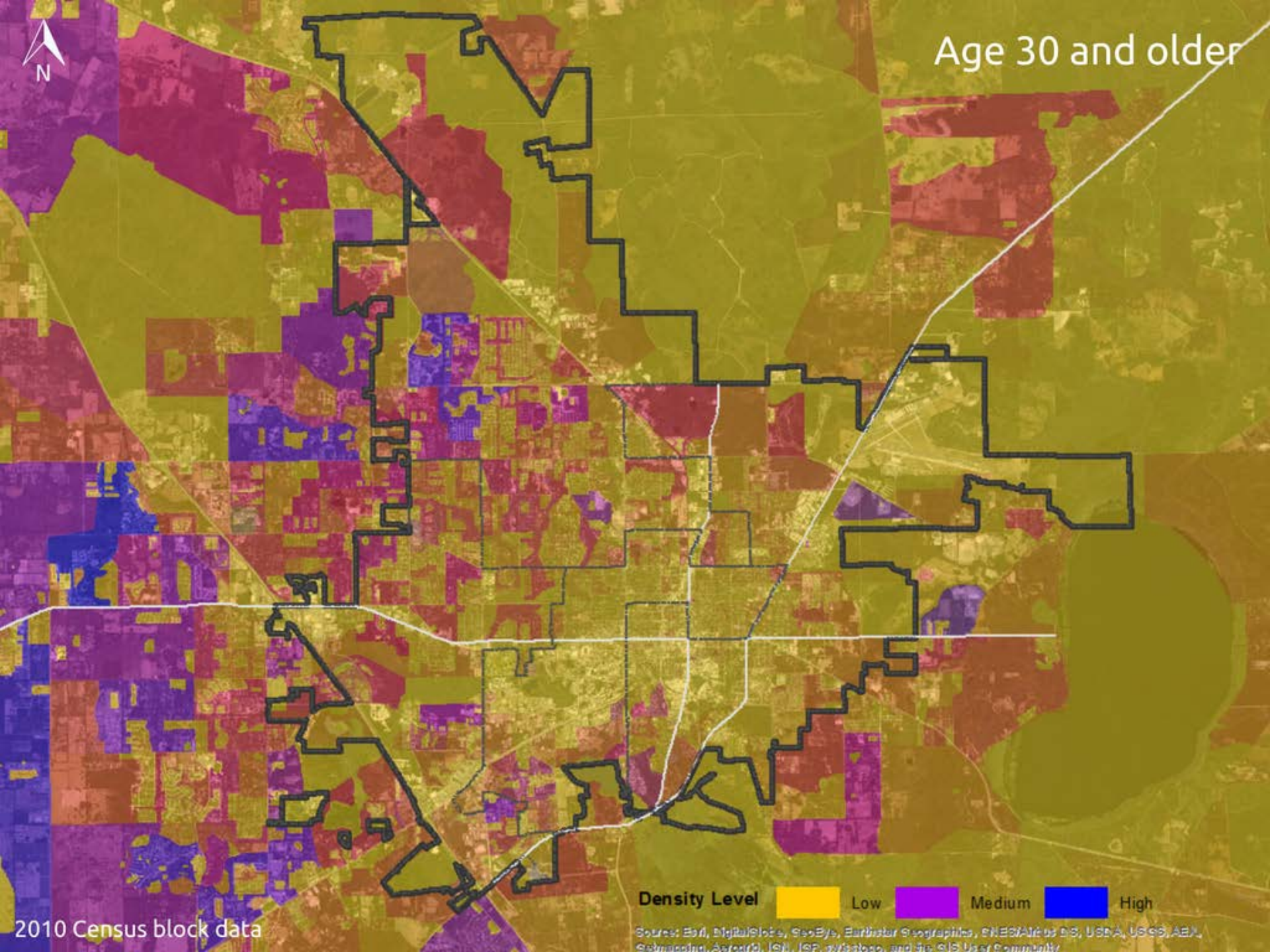


Density Level Low Medium High

2010 Census block data

Source: Esri, DigitalGlobe, GeoEye, Earthstar Geographics, CNES/Airbus DS, USDA, USGS, Aero

Age 30 and older



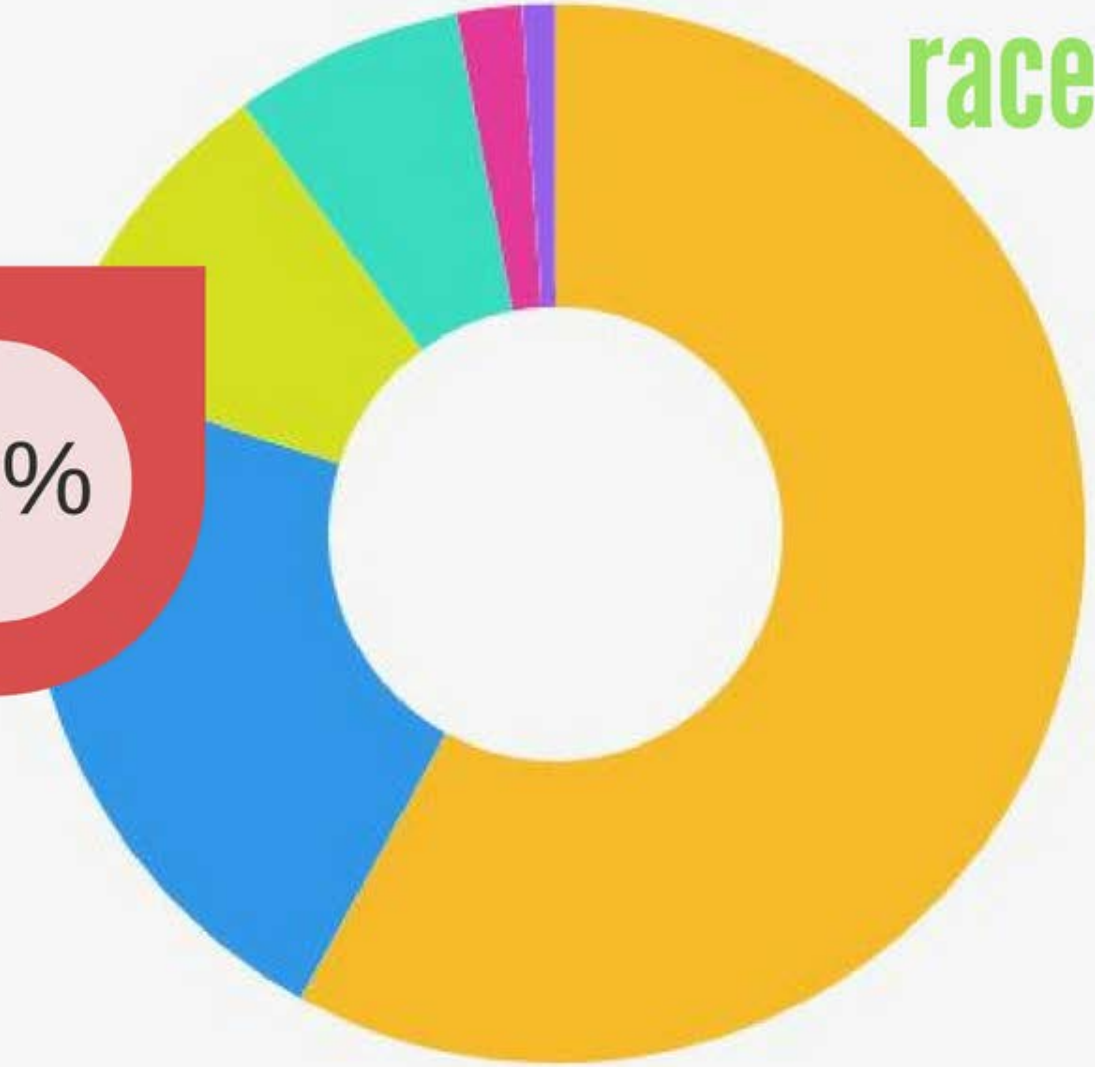
Density Level Low Medium High

2010 Census block data

Source: Esri, DigitalGlobe, GeoEye, Earthstar Geographics, CNES/Airbus DS, USDA, USGS, Aero, Swire, IGN, IGP, swisstopo, and the GIS User Community

race

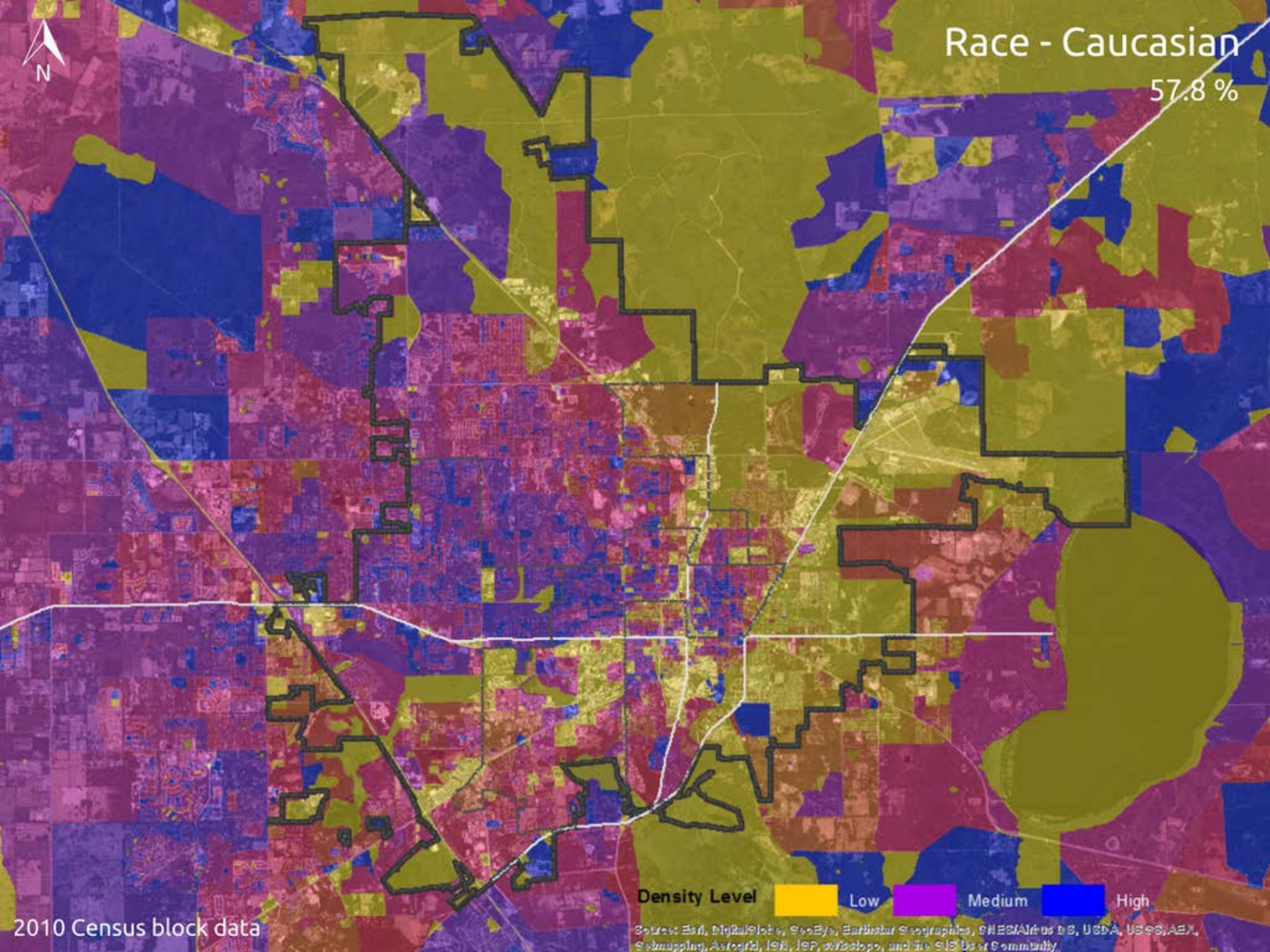
42%



- Caucasian
- Black or African American
- Hispanic or Latino
- Asian
- Two or More Races
- Other Race



Race - Caucasian
57.8 %



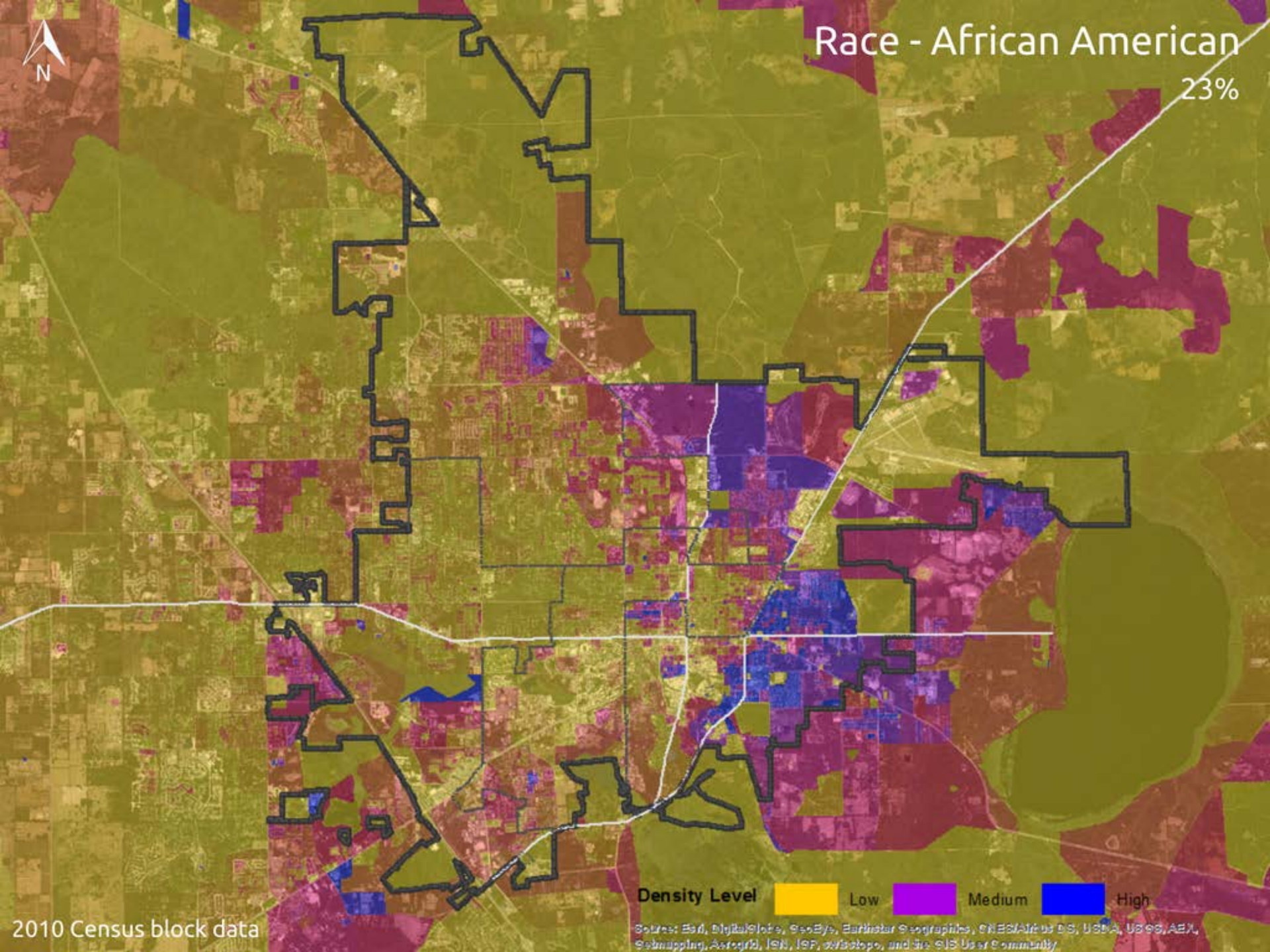
Density Level Low Medium High

2010 Census block data

Source: Esri, DigitalGlobe, GeoEye, Earthstar Geographics, CNES/Airbus DS, USDA, USGS, AeroX, GeoMapping, AeroGRID, IGN, IGP, swisstopo, and the GIS User Community

Race - African American

23%



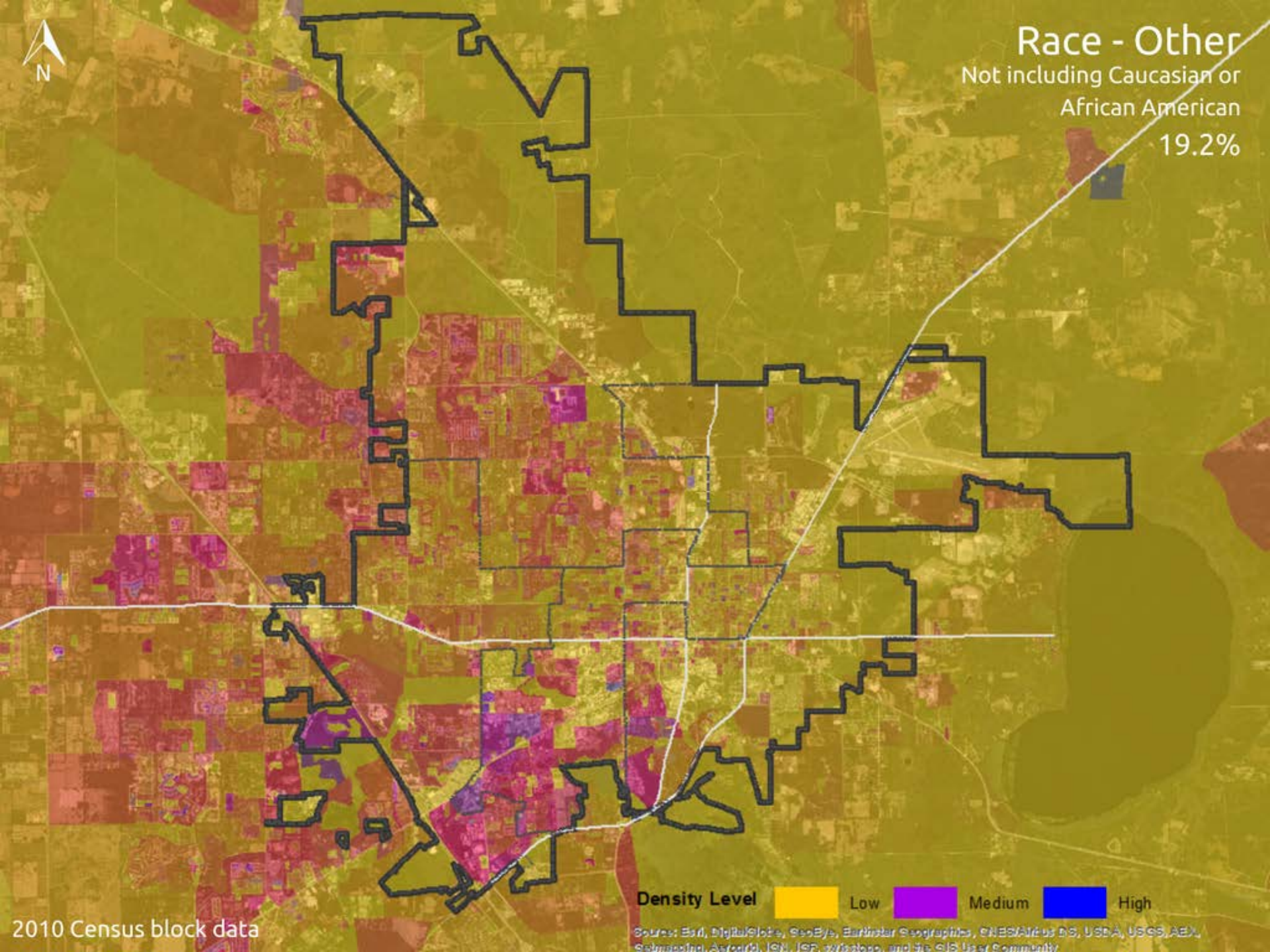
Density Level Low Medium High

Sources: Esri, DigitalGlobe, GeoEye, Earthstar Geographics, CNES/Airbus DS, USDA, USGS, AeroX, Swiremap, AeroGrid, IGN, IGP, swisstopo, and the GIS User Community

2010 Census block data



Race - Other
Not including Caucasian or
African American
19.2%



Density Level Low Medium High

2010 Census block data

Sources: Esri, DigitalGlobe, GeoEye, Earthstar Geographics, CNES/Airbus DS, USDA, USGS, Aero, Swire, IGN, IGP, wipac, and the GIS User Community

occupancy

51,029
households

38%
owner-occupied

62%
renter-occupied

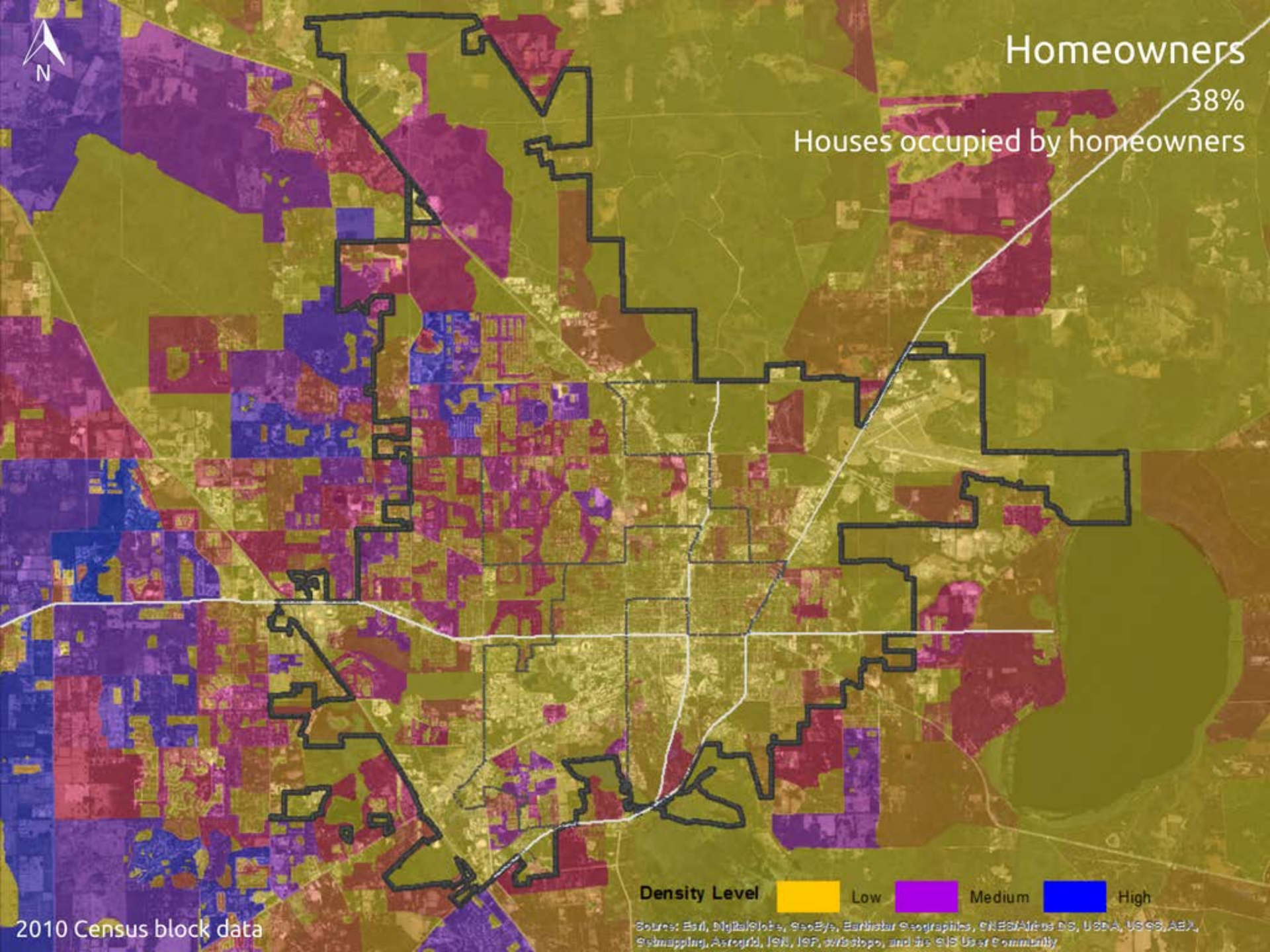
4:6
family:non-family
ratio



Homeowners

38%

Houses occupied by homeowners



2010 Census block data

Density Level Low Medium High

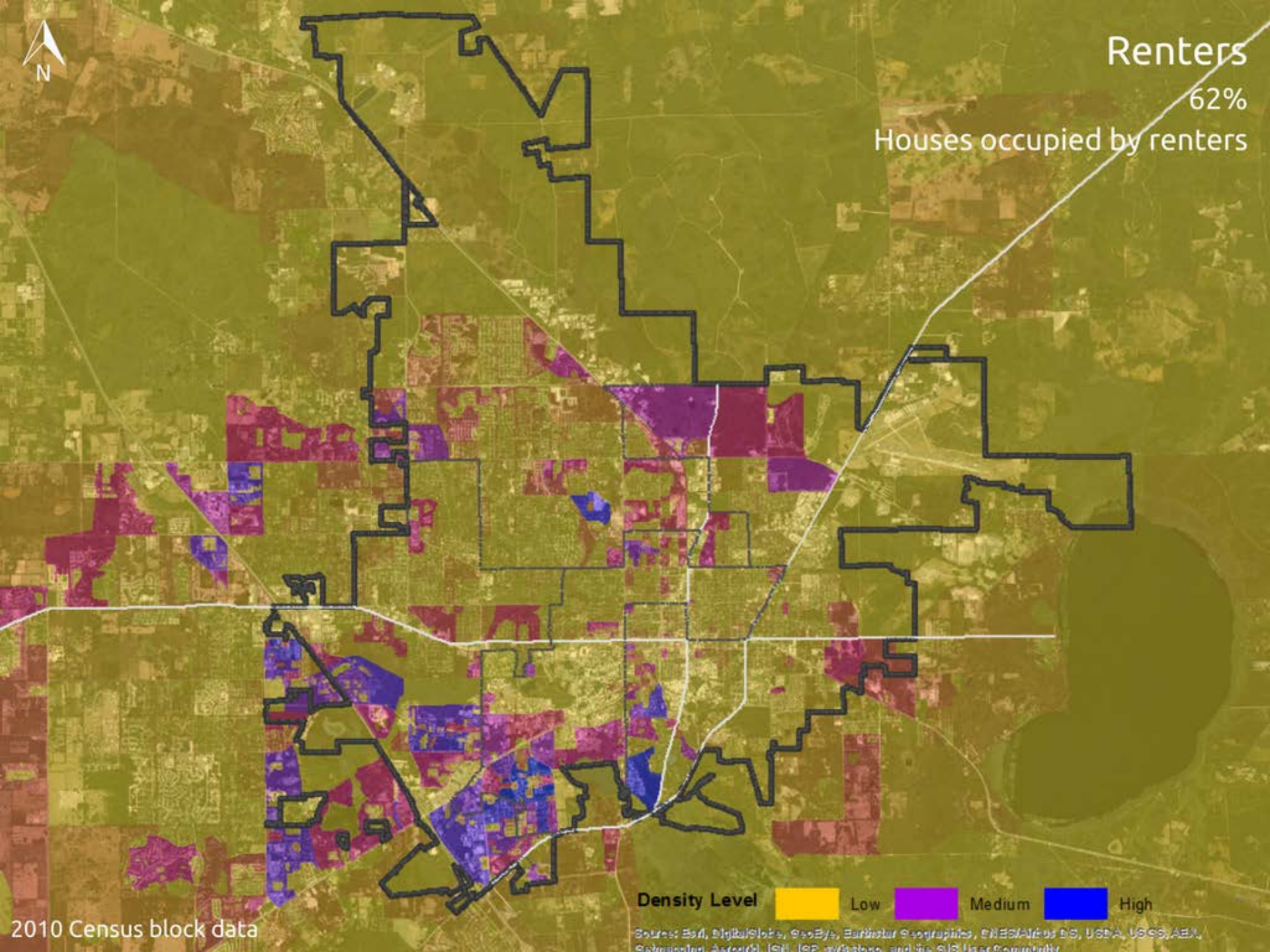
Sources: Esri, DigitalGlobe, GeoEye, Earthstar Geographics, CNES/Airbus DS, USDA, USGS, AeroX, Swisstopo, AeroGRID, IGN, IGP, WorldView, and the GIS User Community



Renters

62%

Houses occupied by renters



Density Level Low Medium High

2010 Census block data

Sources: Esri, DigitalGlobe, GeoEye, Earthstar Geographics, CNES/Airbus DS, USDA, USGS, Aero, GeoEye, IGN, JP2, and other, and the GIS User Community

economic

16%

without health insurance

\$32k

median household income

35.8%

no higher education

18k

below poverty level



Photo Credit: Cary Ader

How can we
incorporate or
support community
goals?

What kind of city
do we want
Gainesville to be?

How can we
foster one
Gainesville?

"AT THE END OF THE DAY,
THE QUESTIONS WE ASK
OURSELVES DETERMINE
THE TYPE OF CITY
THAT GAINESVILLE
WILL BECOME."



understanding community goals

**WHAT GOALS DOES MY
ORGANIZATION OR DO I HAVE FOR
THE FUTURE OF GAINESVILLE?**

understanding community goals



INDIVIDUAL PERSPECTIVE

"LITTLE HAT"

GAINESVILLE PERSPECTIVE

"BIG HAT"



understanding community goals



INDIVIDUAL PERSPECTIVE

"LITTLE HAT"

- **Divide into teams**
- **Introduce yourselves - name, organization or perspective representing**
- **Share with the team - What goals does my organization and/or I have for the future?**
- **Type your answers into the brainstorming software**

understanding community goals

COLLABORATIVE PROCESS

- **Breakout into Teams**
- **Appoint a Keyboarder**
- **Appoint a Spokesperson**
- **Music = Movement!**
- **Take Breaks As Needed**

understanding community goals

THINK TANK DEMO

envisioning the future

GAINESVILLE PERSPECTIVE

"BIG HAT"

- Divide into teams
- As a team answer two questions:
What are the possibilities for the future of Gainesville?
What are the big questions that will move us forward?
- Type your answers into the brainstorming software.



envisioning the future

THINK TANK DEMO

BIG QUESTIONS

