

NPDES Permit Implementation Program



June 5, 2017 Joint Water Policy Committee

Partnership Overview

- The Gainesville Clean Water Partnership was formed in 2003 between the City of Gainesville Public Works, Alachua County Public Works and the Florida Department of Transportation District 2
- Goals were to collaboratively address program requirements of the Clean Water Act as mandated by USEPA and FLDEP
- Partnership has created successful programs that meet permit requirements for three 5 year permit cycles thus far

Funding of the Partnership

- Partnership funding shared by City of Gainesville Public Works, Alachua County Public Works, and FDOT
- Depending on program area, City, County, and FDOT pay different percentage of overall program costs

Administration of Partnership

- City of Gainesville Public Works
- Partners, permits, programs, budgets, and contracts
- Contractors include:
 - Alachua County Environmental Protection Department
 - UF IFAS/Alachua County Extension
 - Current Problems, Inc
 - Uppercase, Inc
 - Jones Edmunds

Partnership NPDES Permits

- City of Gainesville NPDES Permit
#FLR04E006
- Alachua County NPDES Permit
#FLR04E005
- FDOT District 2 NPDES Permit
#FLR04E018

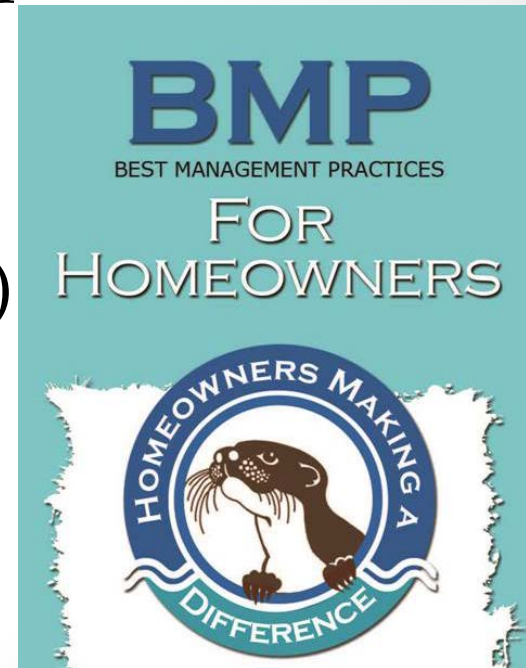


NPDES Permit Program Elements – a walk through partner NPDES permits

- Public Outreach/Public Involvement (City/County/FDOT)
- Illicit Discharge Detection and Elimination (City/County/FDOT)
- The Mapping element of the permit is City/County shared as FDOT maintains its own GIS.
- Construction Site Stormwater Runoff Control (City/County only)
- Pollution Prevention/Good Housekeeping (City/County only)

Public Outreach

- Best Management Practice (BMP) Information distribution
 - Pamphlets distributed at public events and offices
 - Targeted distribution (vet offices)
 - Presentations
 - Green Industries BMP Class



Public Outreach

- On-line Outreach
 - *The Wader* quarterly online newsletter
 - 624 subscribers
 - Websites
 - alachuacountywater.org
 - MyYardOurWater.org
 - gainesvillecreeks.org
 - Facebook
 - Alachua County
 - City of Gainesville



It's all connected

Public Outreach

- Public Events
 - Table with pamphlets and interactive displays at public events
- Youth Outreach
 - Classroom instruction, field trips, hands on Activities
 - Science Night



Targeted Campaigns

- Pet Waste- Scoop it, Bag it, Trash it
 - Commercials, magnets, pamphlets distributed through vets, posters for vets and apartments, bag dispensers through adoption agencies, yard signs
- Grass Clippings Campaign: Keep Grass Off the Streets
 - Commercials, radio spots, magnets, posters
- Turf SWAP
 - Replace turf with FFL; supplemented with grant funding through EPD



Landscaping Outreach

- Florida Friendly Landscaping Residential Program
 - Educates and helps homeowners to decrease pollution originating in home landscapes
 - Presentations, workshops, events, tours
 - Demonstration gardens
 - New homeowner information packets
- Green Industries BMP Trainings

Public Participation

- EPD conducts an annual phone survey (and a web survey in 2016) to evaluate outreach programs and to guide future efforts.



Public Participation

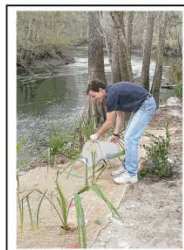
- Public stormwater project meetings
- Stormdrain marking
- Waterway cleanups
- Shoreline restoration guidance
- Urban Area clean up events

Adopt A River



Help clean a portion of your favorite waterway

Restore A Shore



Revegetate your shoreline

Plant A Pond



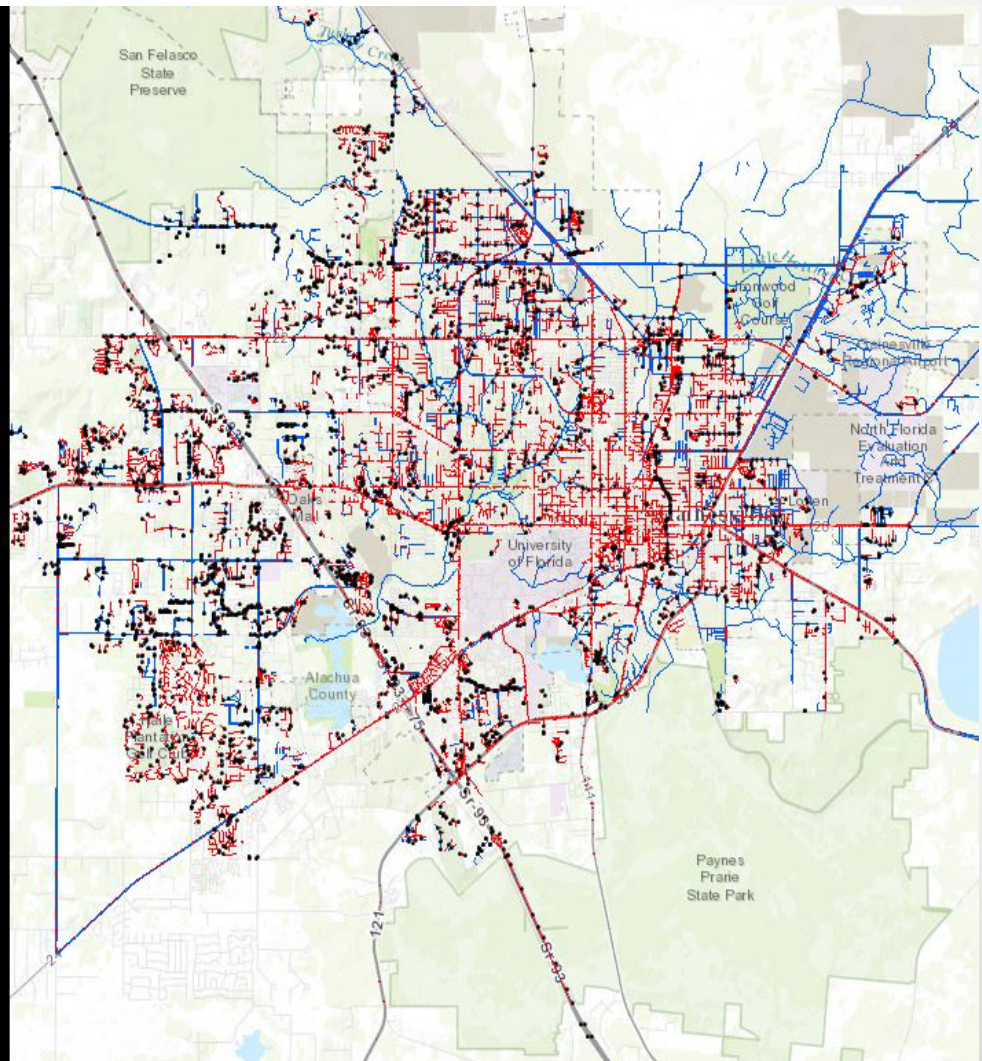
Plant your business, school, or neighborhood stormwater pond

Illicit Discharge Detection Elimination

COUNTY-WIDE GIS BASED STORMWATER INFRASTRUCTURE DATASET

For over 10 years, the GCWP has been compiling old and incorporating new stormwater infrastructure into a central GIS geodatabase. This is a huge effort that consists of reviewing thousands of as-built drawing sets and georectifying relevant scanned as-builts from new developments that contain data on stormwater infrastructure that was installed. Additionally, for new developments, the GCWP incorporates digital as-built data from permittees. After as-builts are scanned and georeferenced, all stormwater infrastructure is digitized and attributed with important attributes contained in the as-builts such as inverts, material type, and install date. This stormwater infrastructure is then connected to off-site features to create a County-wide stormwater network.

This geodatabase is an invaluable spatial inventory of the City and County's stormwater infrastructure which meets a requirement of the GCWP NPDES permit and serves as the source data for Cityworks asset management software used by the City of Gainesville. The stormwater database provides numerous additional benefits such as improving the accuracy of inspections, allows for tracking of maintenance activities, ability to extract information in report or spreadsheet format and facilitates hazardous spill response and facilities



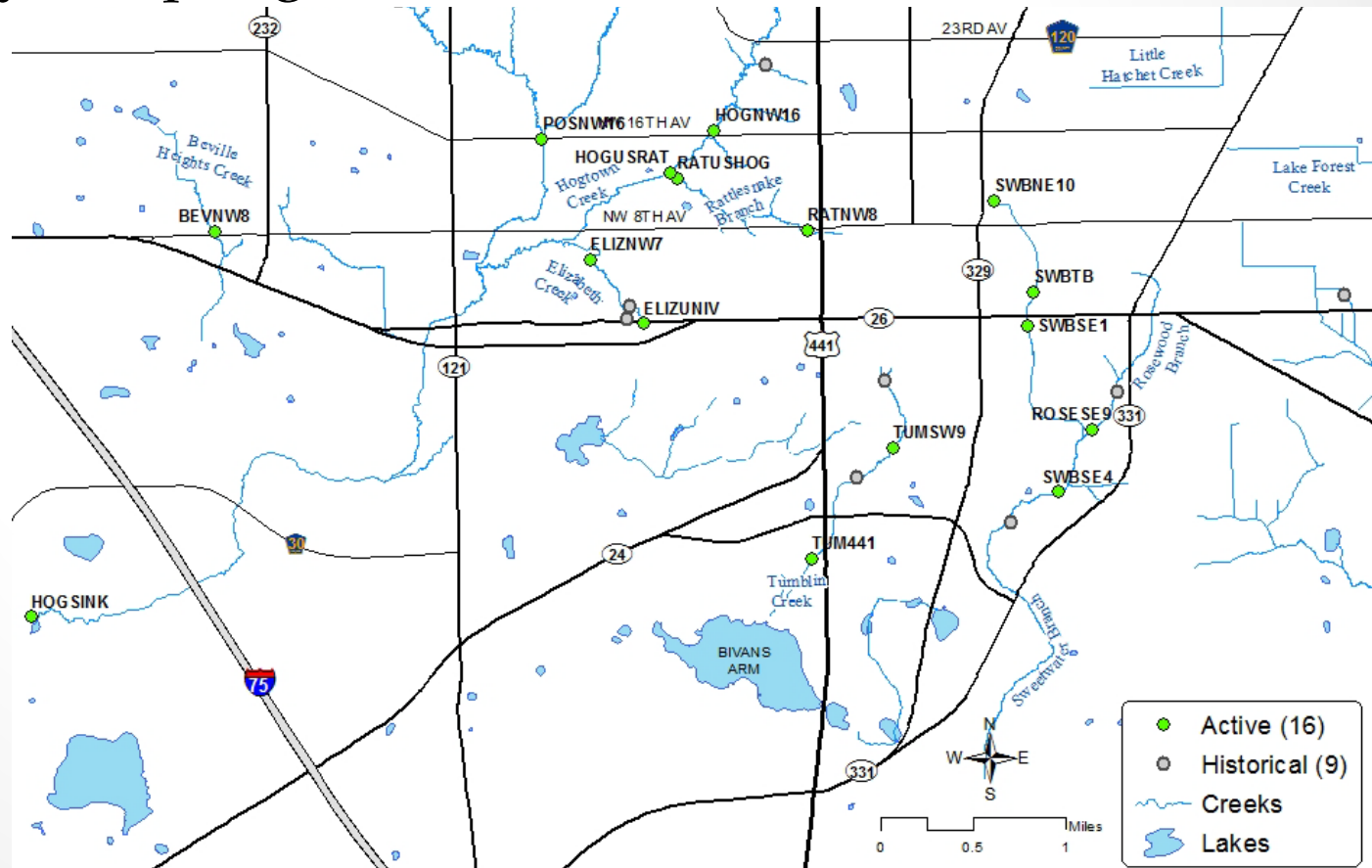
Illicit Discharge Detection and Elimination

- Illicit Discharge Mapping
- Enforcement of
Countywide Water
Quality Code: *Only Rain
Down the Drain*



Detection Elimination

- Water Quality Monitoring
 - Urban creeks are monitored for fecal coliform and *E. coli*
 - Quarterly sampling of 16 routine sites



Illicit Discharge Detection and Elimination MS4 Component Inspection

- Inspections of storm sewer system are conducted during regular maintenance schedule
- Any IDDE violations are reported to stormwater hotline

Illicit Discharge Detection Elimination

- Annual inspections of Hazardous Materials Facilities
- Investigative Studies
 - Outfall Reconnaissance Inventory (ORI) of urban creeks
 - Investigations of potential illicit discharges identified by sampling
 - Walk creeks, sample from stormwater system, wildlife camera, etc.



Illicit Discharge

Detection Elimination

- Identifying conflicts in the stormwater system from other infrastructure
- Citizen Complaint Investigations



Illicit Discharge Detection Elimination

- Compliance site visits to restaurants, apartments and private lift stations
- Green Industries Best Management Practices Training



Construction Site Stormwater Runoff Control

- Alachua County Water Quality Code
- Land Development Code requirements for erosion, sediment, waste control
- Site plan review
- Staff inspections
- Clean Creeks hotline
- Training



Good Housekeeping

- Maintenance of municipal BMPs
 - Street sweeping, MS4 maintenance activities, pet waste receptacles, facility SWPPPs, integrated pest management, fleet maintenance etc
- Pollution prevention training for field employees
- New employee training
- Report illicit discharges to hotline



Reporting and Permit Upkeep

- Reporting required by FDEP every other year
- Permit renewal every 5 years
- Partnership agreement renewal every 5 years



Questions?

