



Discussion of Load Factor and Demand Rate Billing

Utility Advisory Board

Item #170180

July 12, 2017

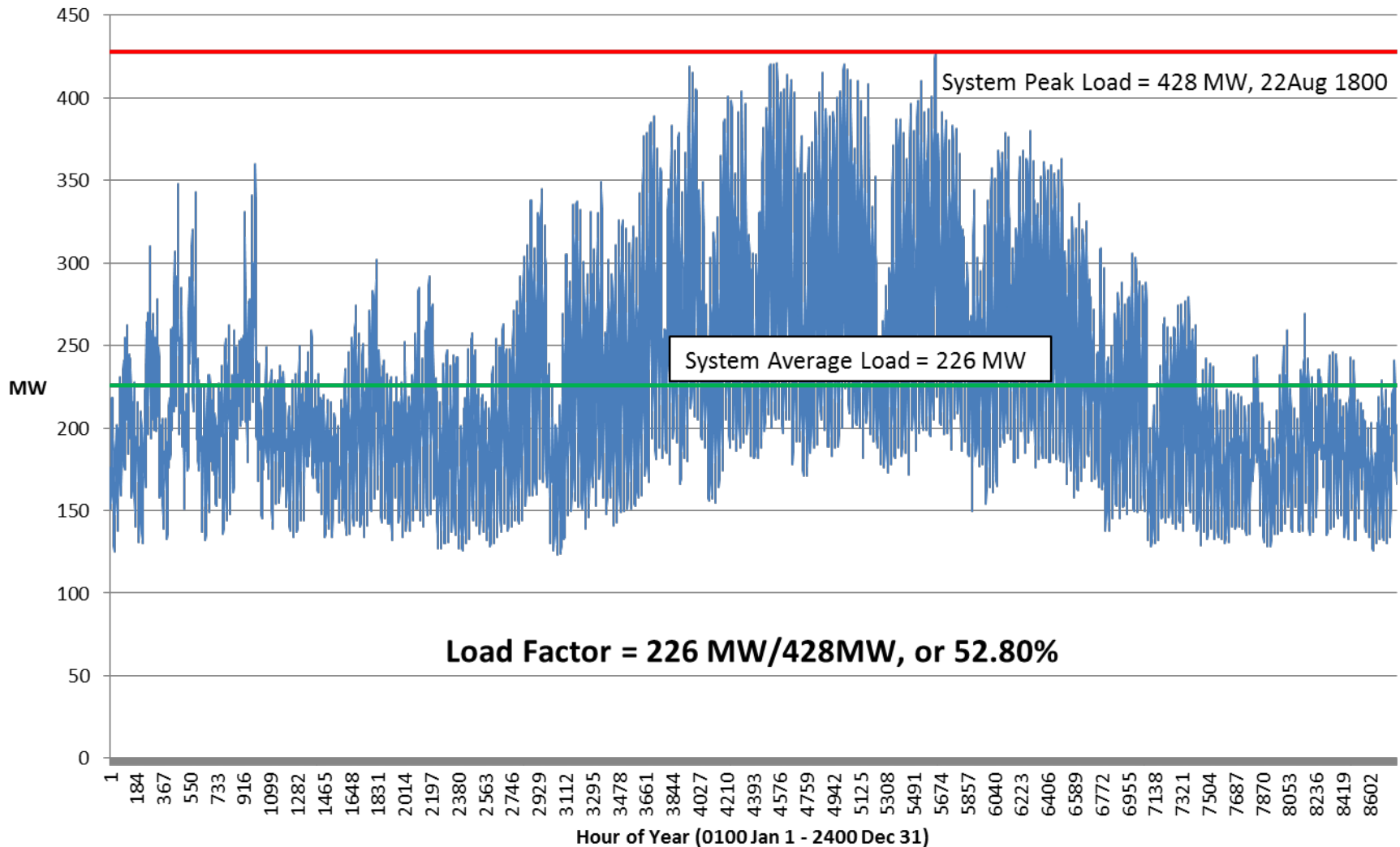
Load Factor Defined

- Electric “Load” represents a quantity of electrical power over a period of time.
- When that period is an hour or less, Load corresponds to Demand and is expressed in units of Watts (kW or MW).
- When the period is more than an hour, Load corresponds to Energy and is expressed in units of kiloWatt-hours (kWh or MWh).

Load Factor Defined

- Load Factor represents the ratio of Average Load as a proportion of Maximum Load.
- GRU bills maximum monthly billing demand defined as the highest two consecutive 15 minute readings (30 minute interval).
Section 27-21, Gainesville Code of Ordinances

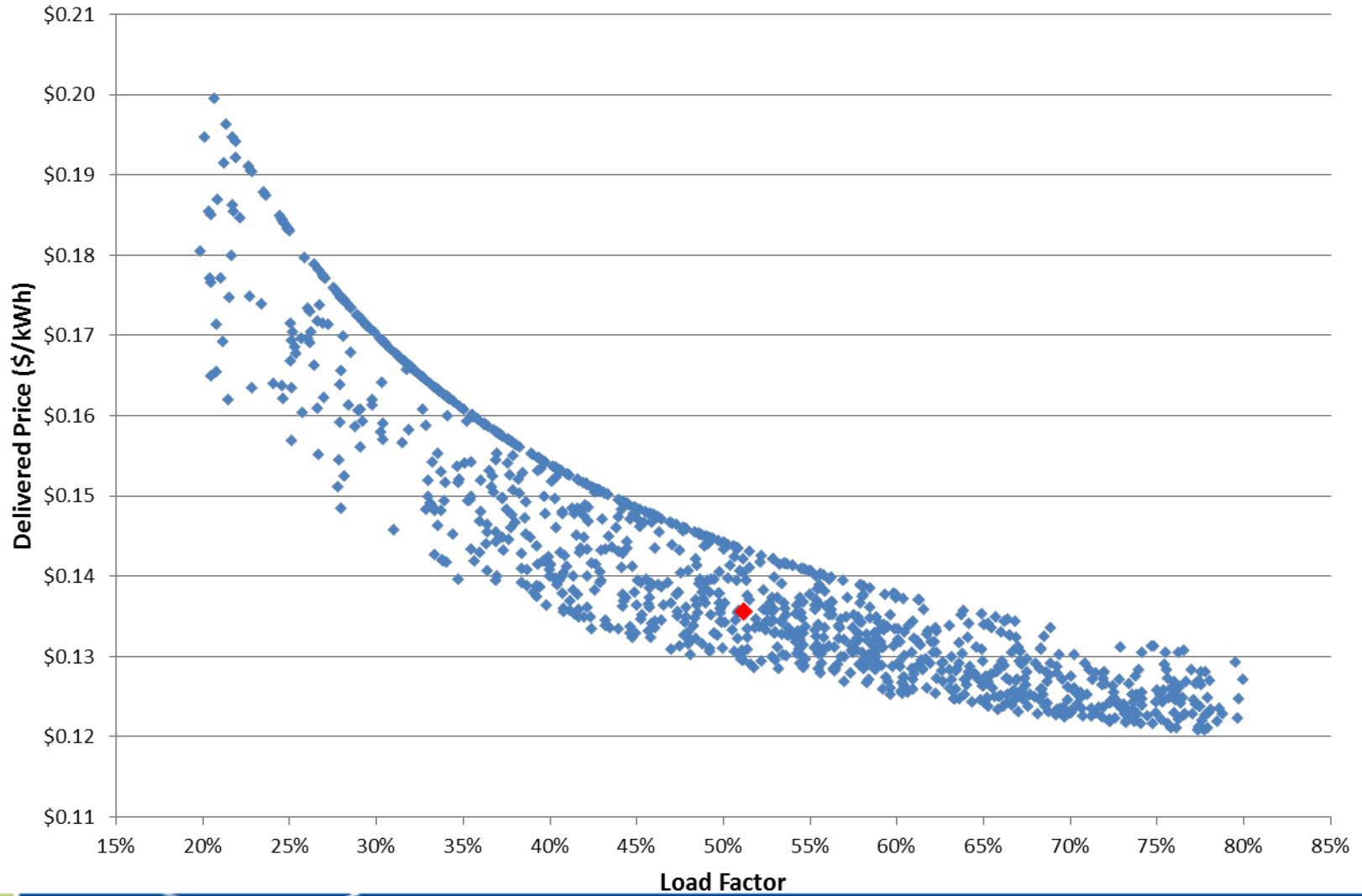
Load Factor Example - GRU System Load 2016



General Service Demand

- Four part rate consisting of:
 - Customer charge, \$100.00/month
 - Energy charge, \$0.040/kWh
 - Demand charge, \$8.50/kW
 - Fuel Adjustment charge, \$0.070/kWh
- For customers with billing demands of at least 50 kW but less than 1000 kW
- Customers with demands less than 50 kW during peak periods may elect GSN rate (small churches)
1.3% of customer base; 34% of energy; 13.6 cents/kWh

General Service Demand - June 2017 Billing



June 2017 GSD Billing Demand

