

Automated Energy

Utility Advisory Board
Item #181020
May 8, 2019

Michael McCabe

Business Efficiency Program Coordinator
Energy & Business Services



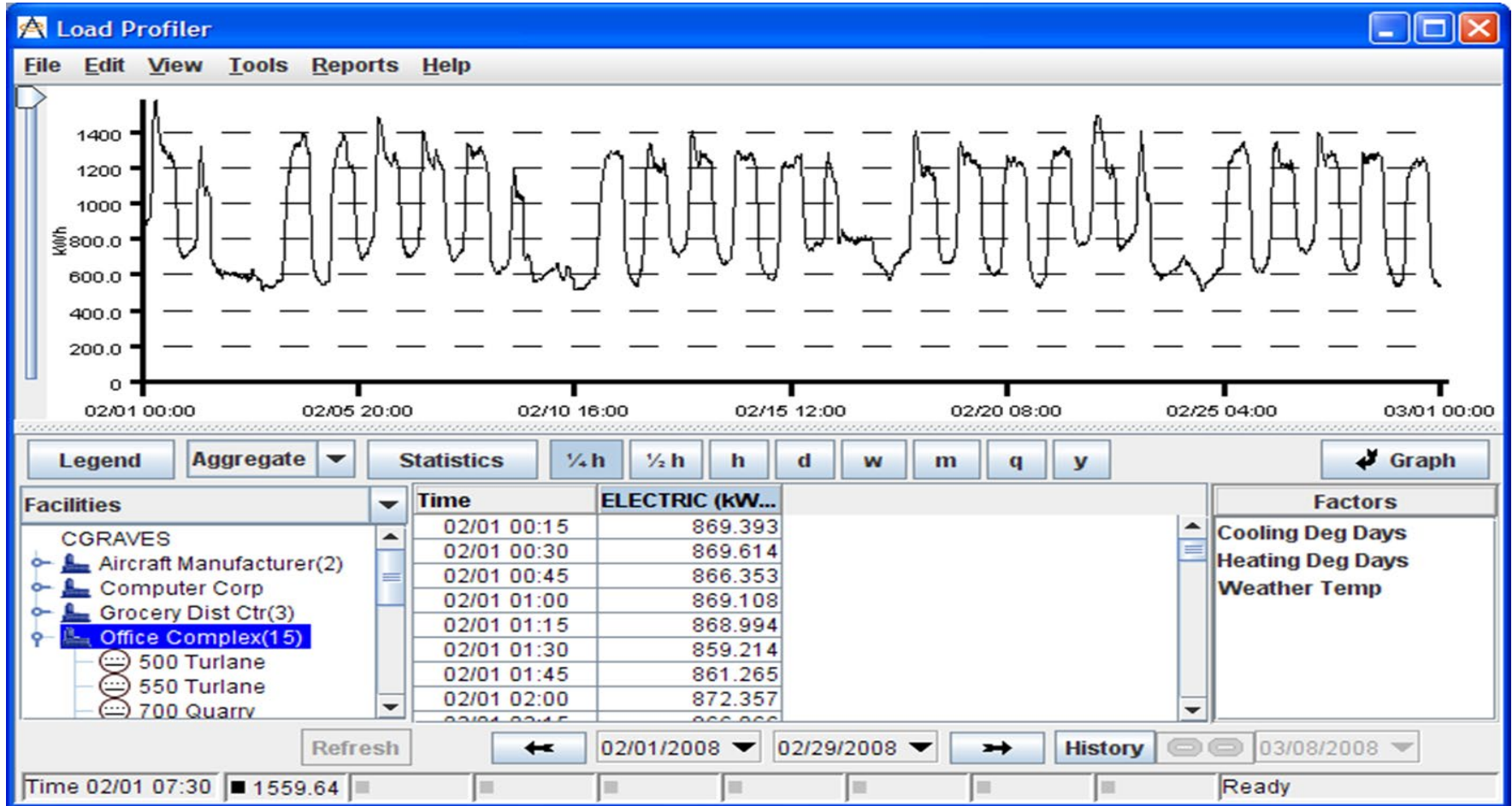
Load Profiling Tool

- ▶ Measure Performance
- ▶ Manage Demand
- ▶ Troubleshooting

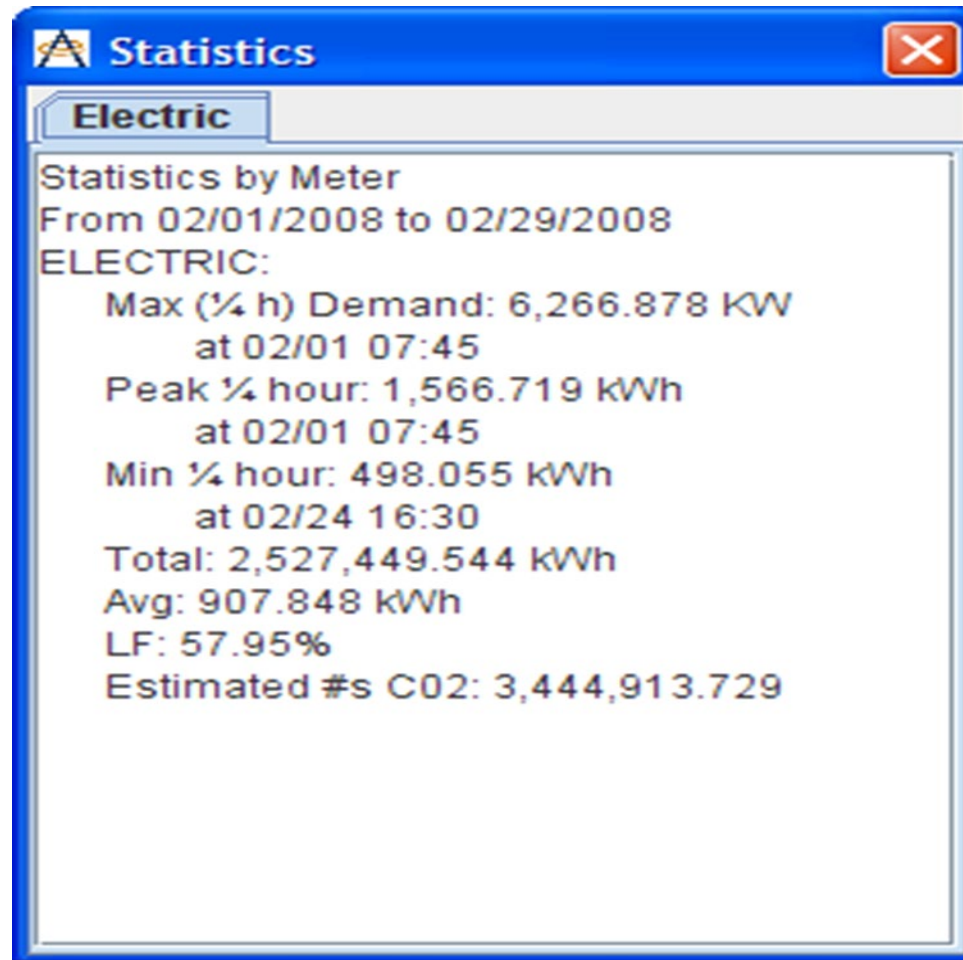
How it works

- ▶ Interval data is captured at the electric meter every 15 mins
- ▶ Data is collected and provided to Automated Energy
- ▶ Automated Energy plots/graphs the data within the Load Profiler Tool
- ▶ Interval data captured and/or calculated include: kWh, kW, KVA, PF

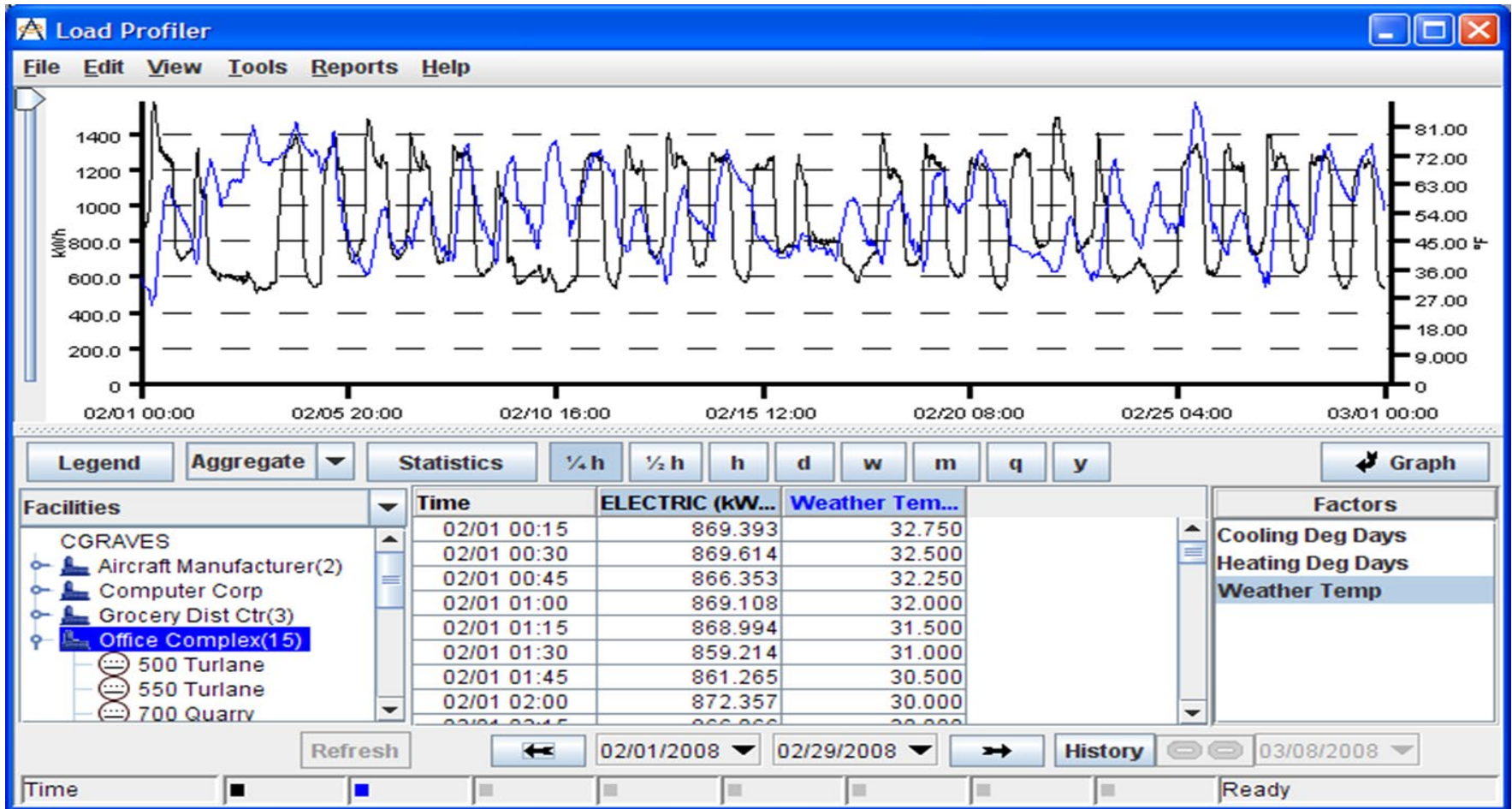
Detailed Usage



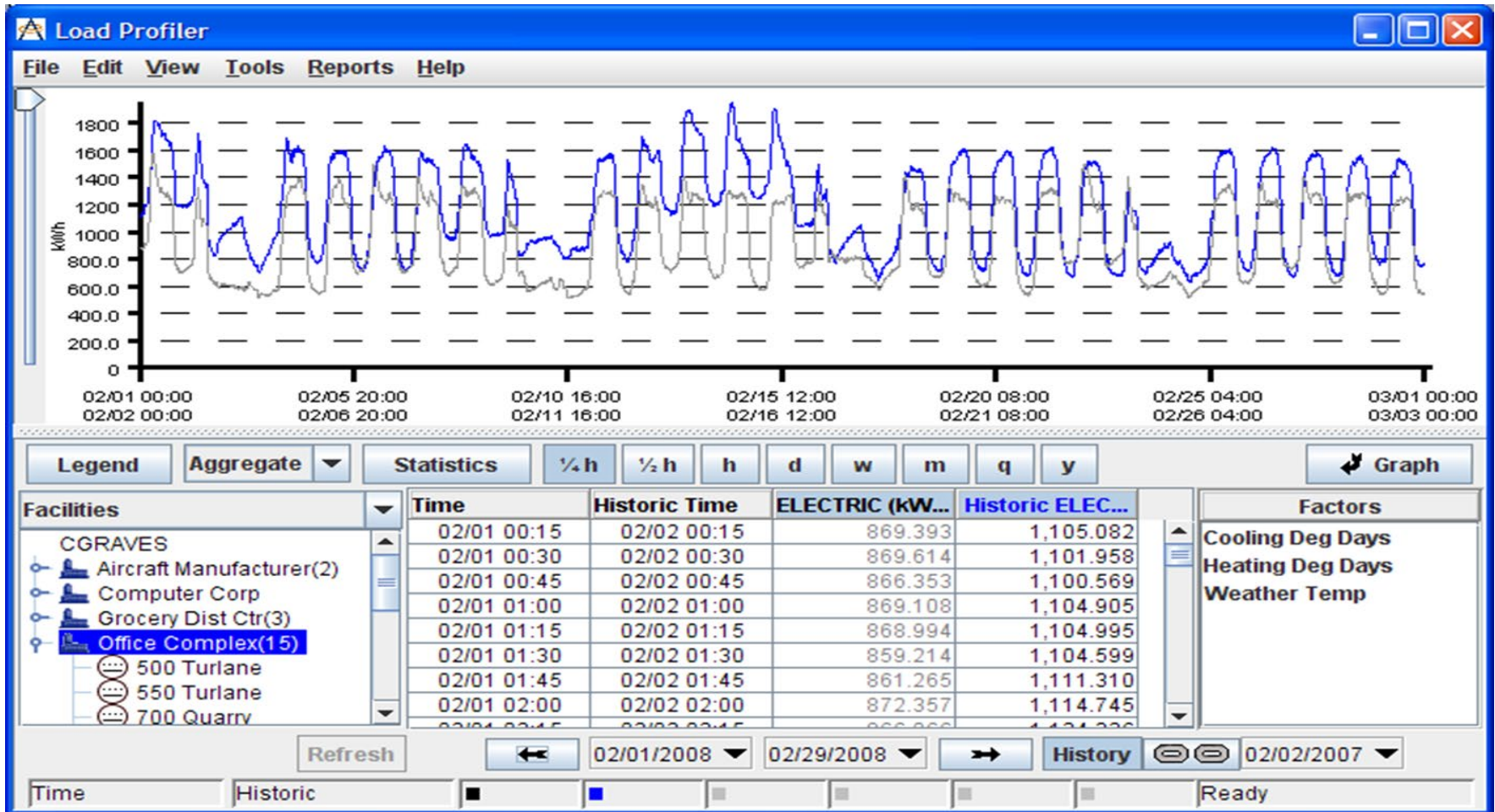
Snap Shot Statistics



Usage vs. Temperature



Historic Comparison



Rate Editor

Rate Editor

Rate Schedule: **Service Level 2(Default)** Delete Options ☒ Slider Rate

Seasons

Winter

Oct-01-2003
Oct-01-2002
Oct-01-2001
Oct-01-2000
Oct-01-1999

Remove

Spring

Remove

Summer

Jun-01-2003
Jun-01-2002
Jun-01-2001
Jun-01-2000
Jun-01-1999

Remove

Autumn

Remove

04/03/2004 Winter Add < 2004 >

Winter Spring Summer Autumn

Time Slots	Start 1	End 1	Start 2	End 2	Start 3	End 3	Start 4	End 4
On	2:00 PM	9:00 PM						
Mid								
Off	12:00 AM	2:00 PM	9:00 PM	12:00 AM				

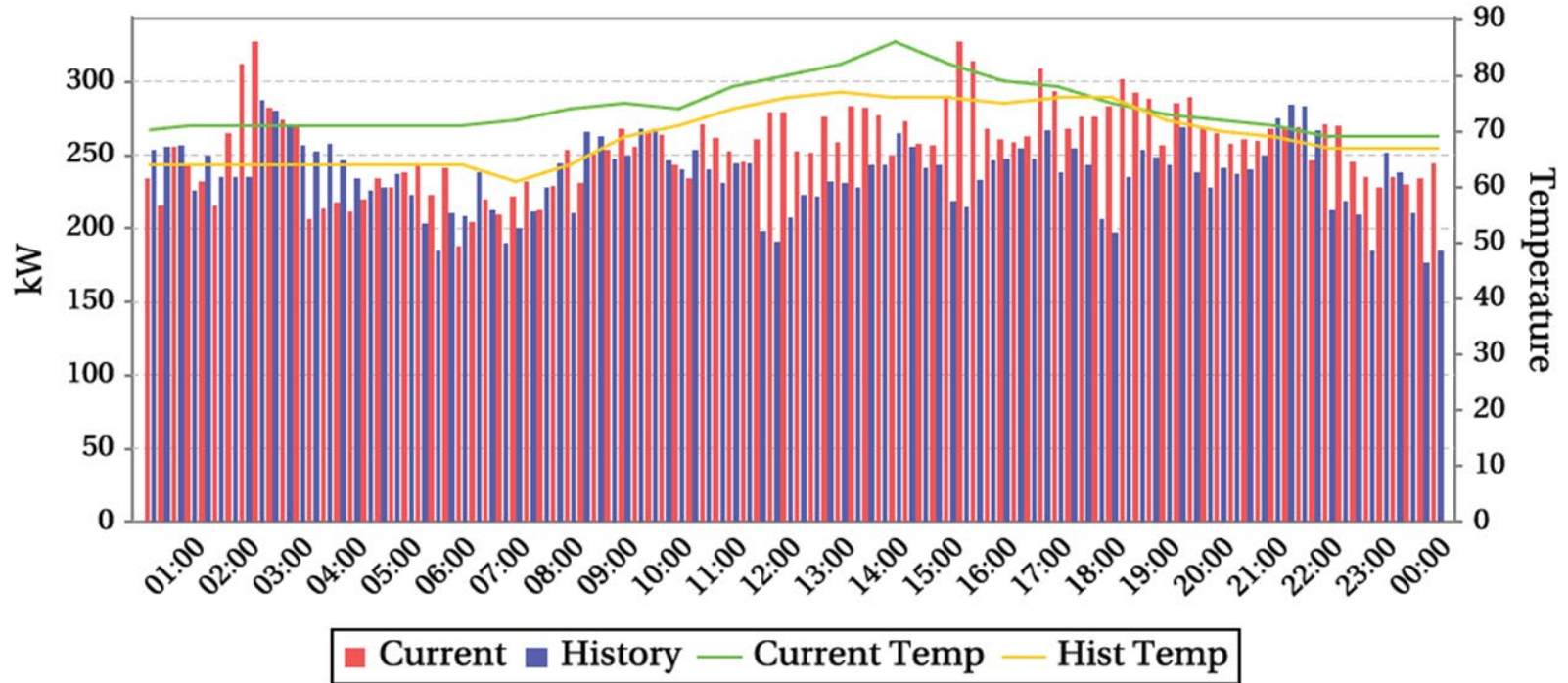
On Pk Usg Mid Pk Usg Off Pk Usg All Usg On Pk Dmd Mid Pk Dmd Off Pk Dmd All Dmd Misc

Description	Rate	Rate Type
Base Service Charge	62.46	\$ Flat
Monthly Maximum Demand...	0.74	\$ / kW
Reactive Power Charge	{kVAR>(.30*AllDmd)}?.17*(kVAR-(.30*AllDmd)):0	\$ Flat
Fuel Cost Adj	.0559	¢ / kWh
Tulsa Franchise Fee	2	% Bill
Peak Demand Charge	{OnDmd>(.9*rOnDmd)}?OnDmd*4.94:(.9*rOnDmd)*4.94	\$ Flat
		\$ Flat
		\$ Flat

Rate Admin Calc New Save Save As Close

Automated Daily Reports

Demand Comparison for
04/09/19 and 04/10/18

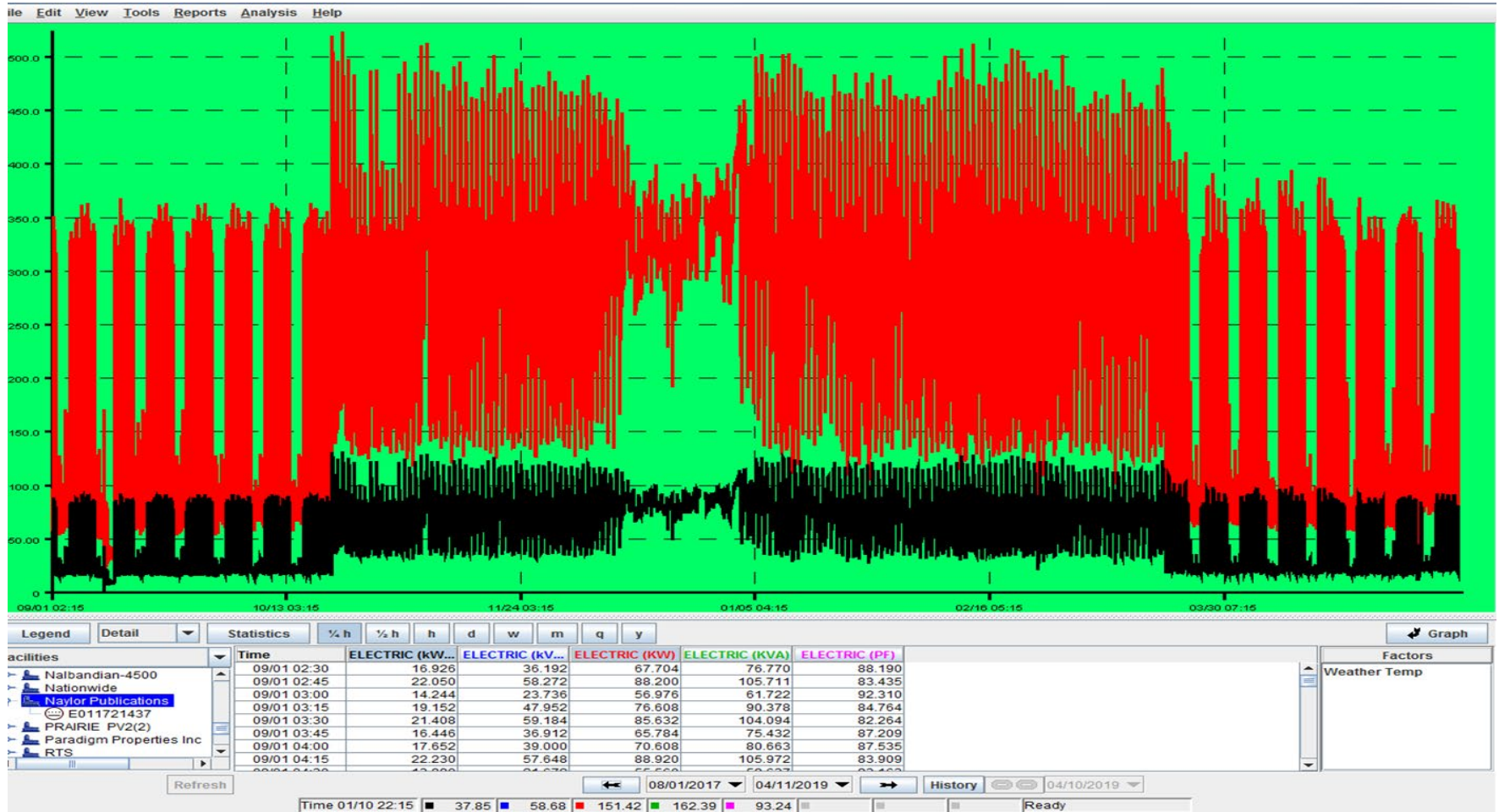


04/09/19

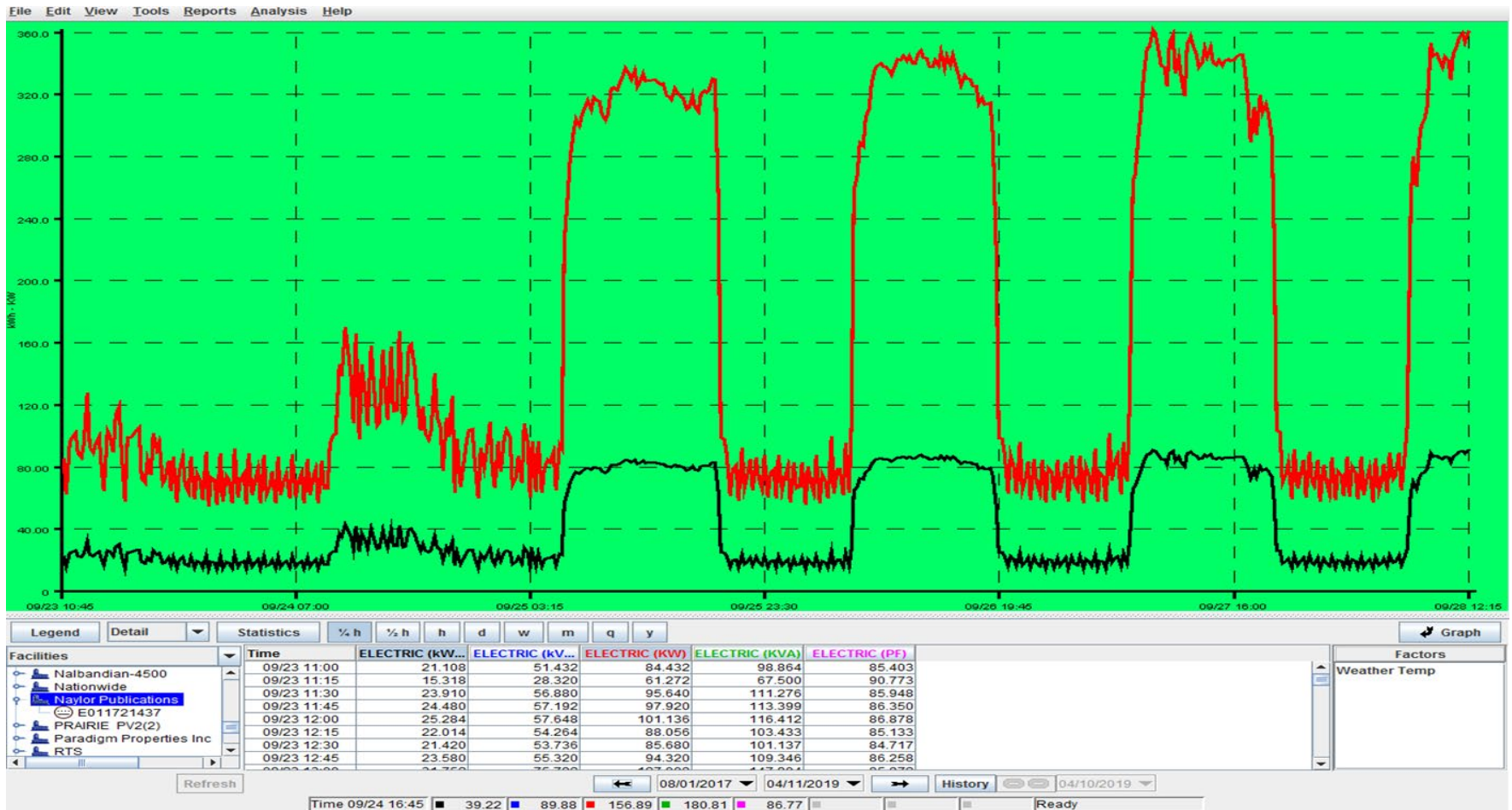
Getting enrolled

- ▶ Electric meter compatible with MV90 software required
- ▶ \$100 start-up fee (pass through to Automated Energy)
- ▶ \$45/month service fee

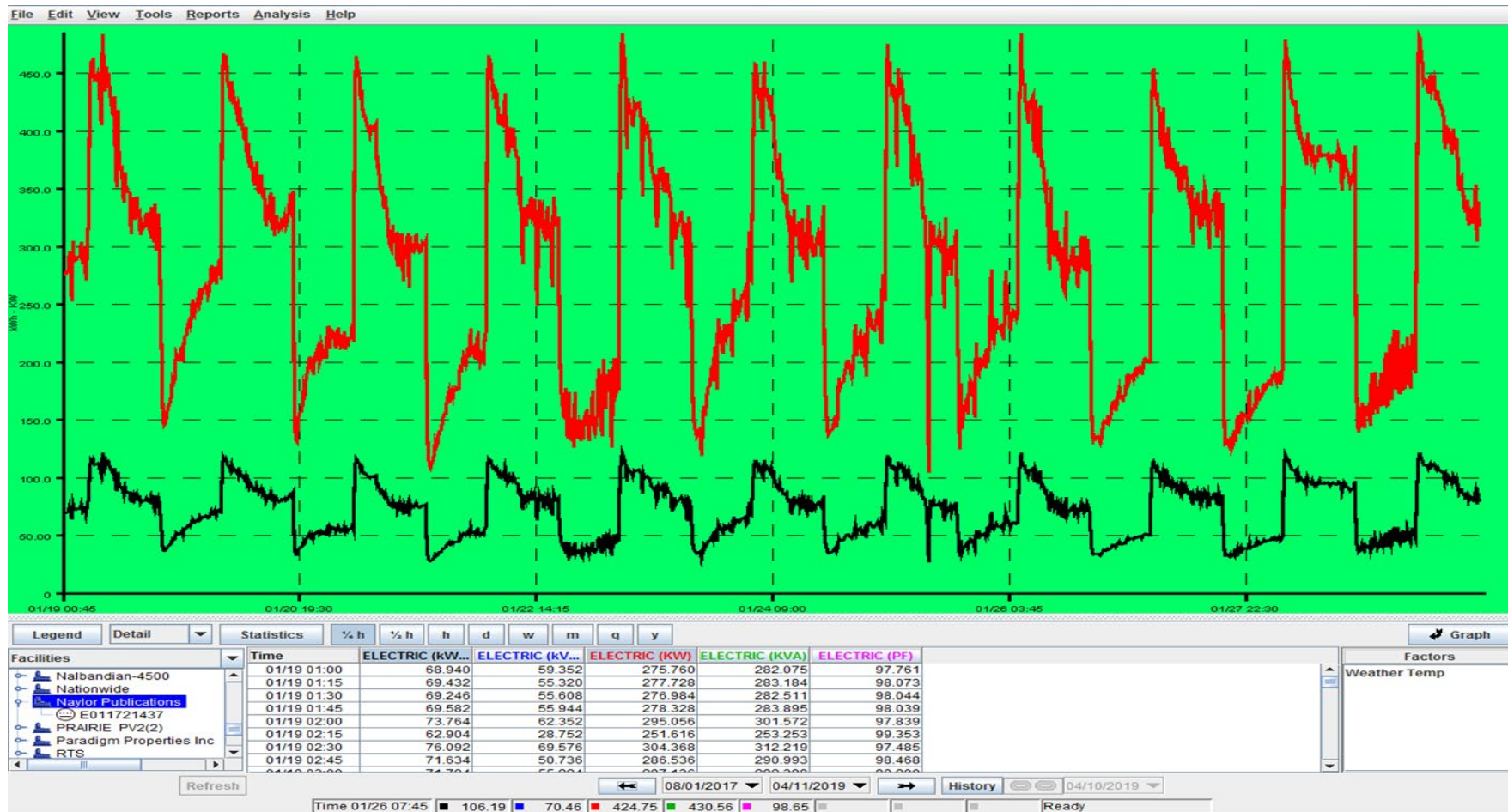
Troubleshooting Example



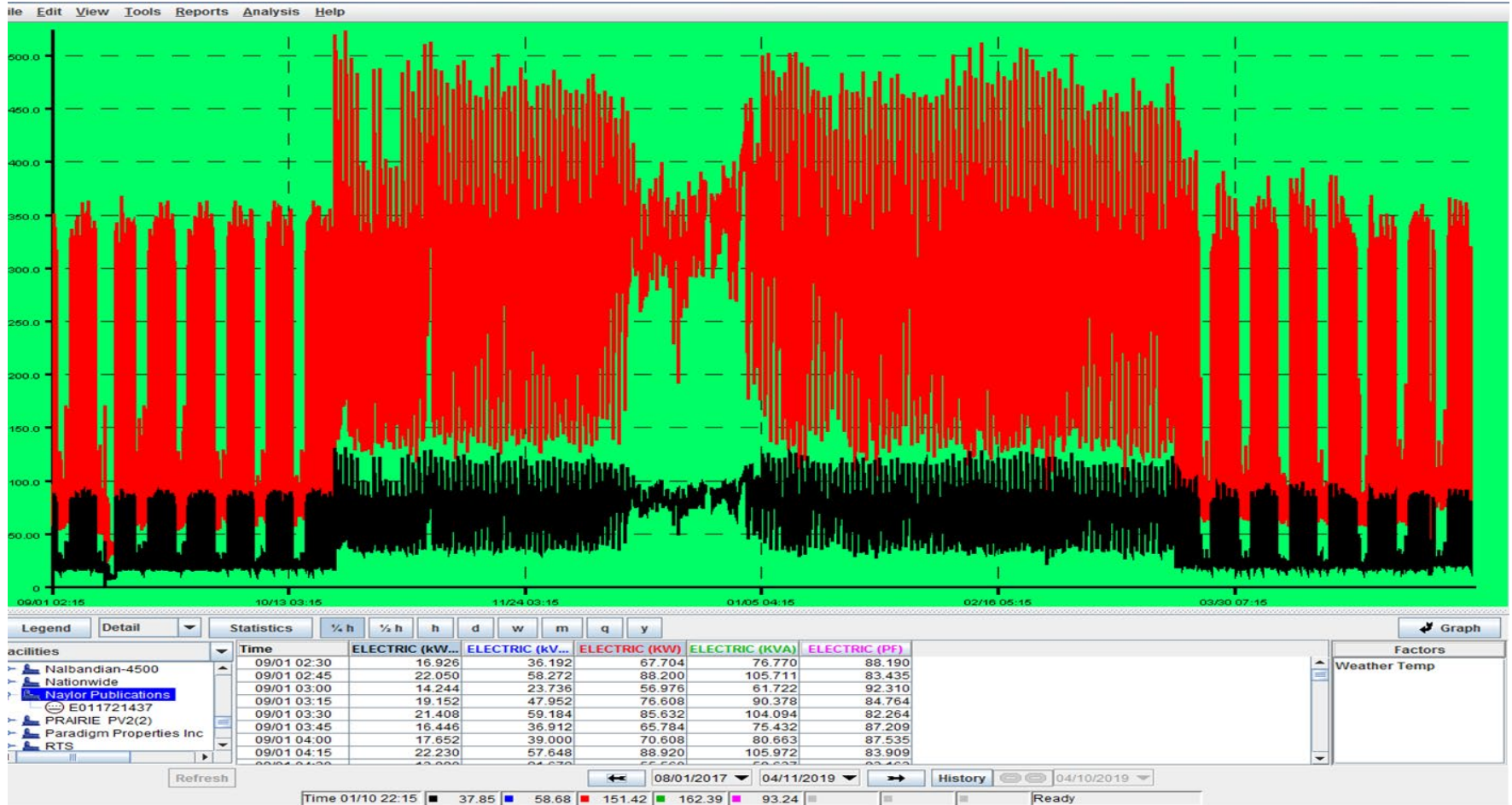
Troubleshooting Example Continued



Troubleshooting Example Continued



Troubleshooting Example Explained



Questions?