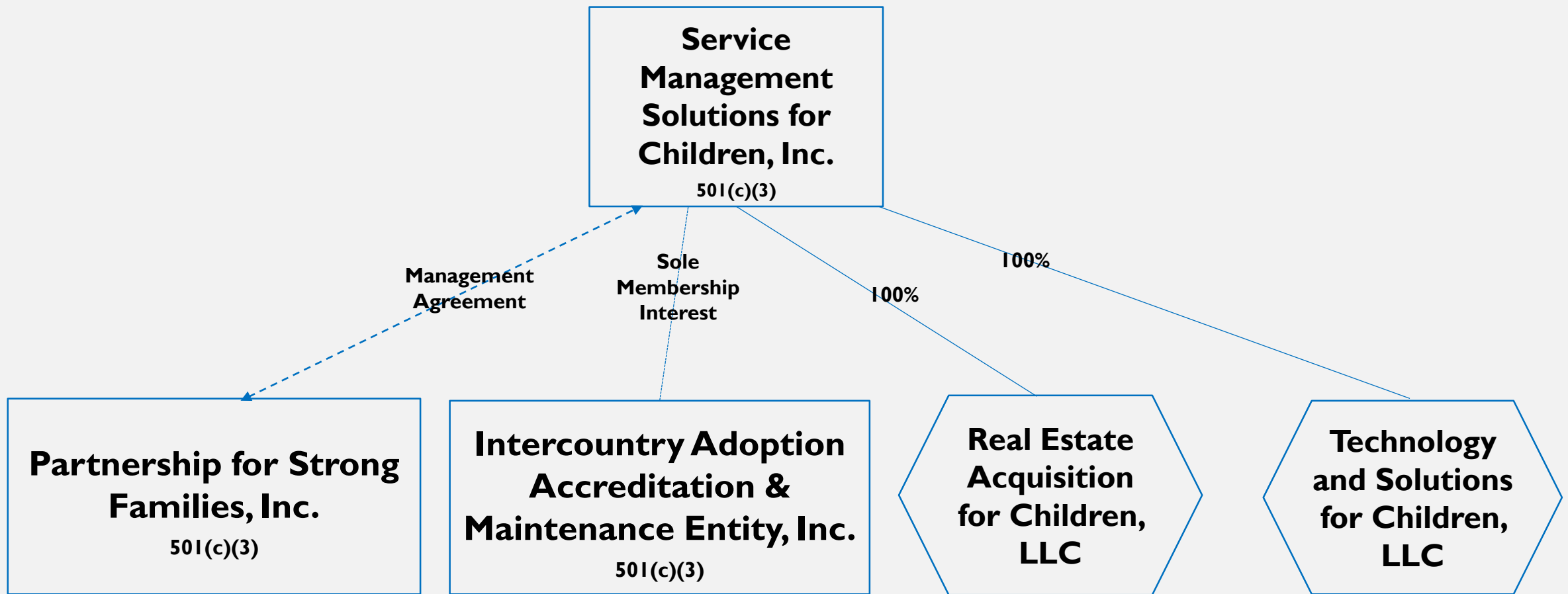


LEGISTAR # 190364E

**802 NW 5TH AVENUE
GAINESVILLE, FL 32601**

Patty Carroll, Director of Community Relations & Recruitment

Justen Ostreicher, Director of Program Quality & Contract Management



2017 Corporate Expansion

- Increase revenues/resources to drive our mission in our community;
- Create opportunities for innovation and excellence in our system of care; and
- Reduce/eliminate the impact of administrative costs by developing and utilizing a more dynamic and sustainable funding model.

INVESTMENT IN THE COMMUNITY

- In 2018, PSF served **2,212** children and their families in the child welfare system.
 - Reunified **224** children with their biological families
 - Finalized **265** adoptions
 - Licensed **40** new foster families
- Currently, we are serving **393** in Alachua County who have experienced abuse, neglect or abandonment.
 - **235** in out-of-home care
 - **158** in in-home care
- In 2009 PSF established a Resource Centers Model to strengthen families and prevent child maltreatment. We have since established **3** Resource Centers in Gainesville.
 - In 2018, there were **35,441** visits to the Resource Centers and **46,607** services were provided.
 - **75** formal and informal partnerships established to offer every service at no cost to the community.
 - Since establishing the Resource Center Model, we have seen **rates of maltreatment decrease by 75%** in the communities served by the Gainesville Resource Centers.

A CONTINUING INVESTMENT

- The purchase of the **802 building** will allow Service Management Solutions and Intercountry Adoption Accreditation and Maintenance entity to:
 - Offer community-wide trainings at a central location
 - Trauma-informed workshops
 - Mental Health First Aid
 - Bring a growing *national* and *global* audience to Gainesville
 - Department of State
 - Foreign central authorities
 - Re-invest in the community
 - Large-scale donation drives for youth in care
 - Continue to strengthen the Resource Center Model for child abuse prevention
 - Commitment to continuing established agreements for use of parking lot

WHY THIS LOCATION IS KEY

- Physical location
 - Minutes from downtown Gainesville and some of the community's most popular destinations
 - Central location for SMS/IAAME/PSF staff
 - Convenient training space with plenty of room for parking
- Office space
 - Current floor plan allows for ample use of space for training and donations
 - Two-story layout allows for the separation of SMS/IAAME staff facilities with space for meeting rooms for both agencies
 - Open concept allows for innovation and collaboration among staff and visitors